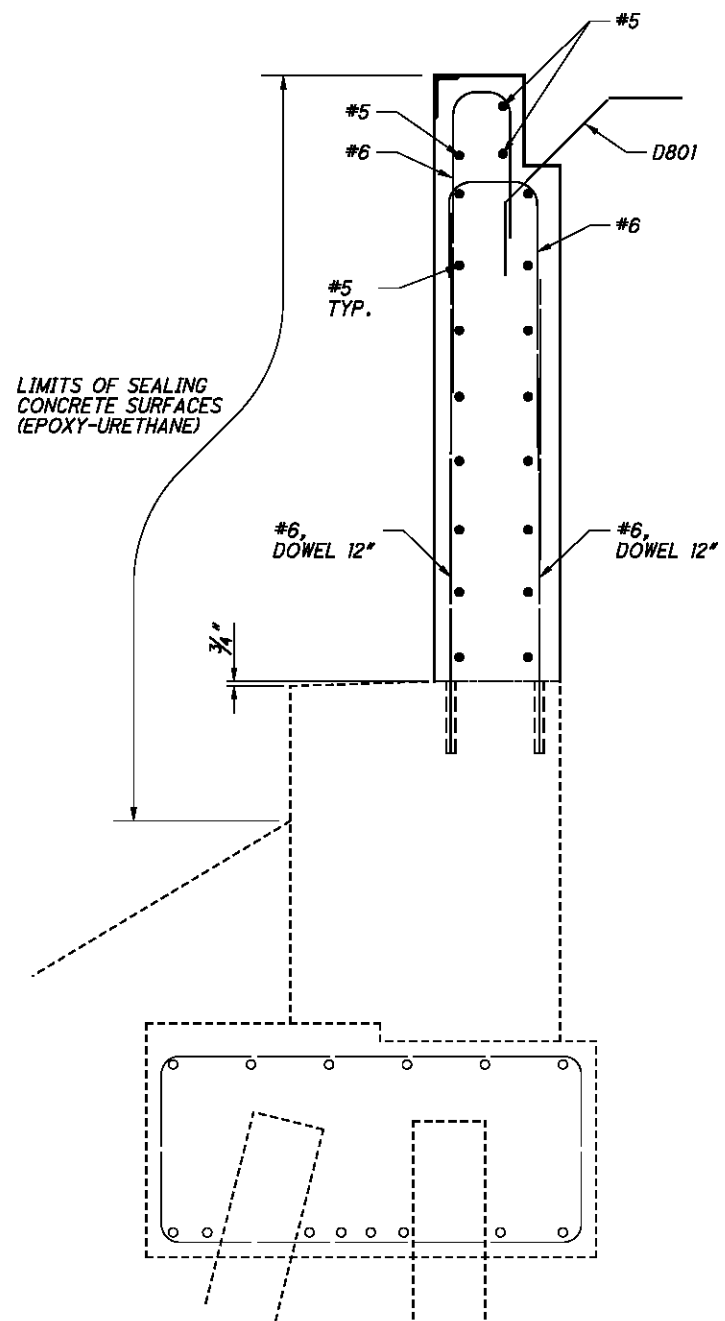
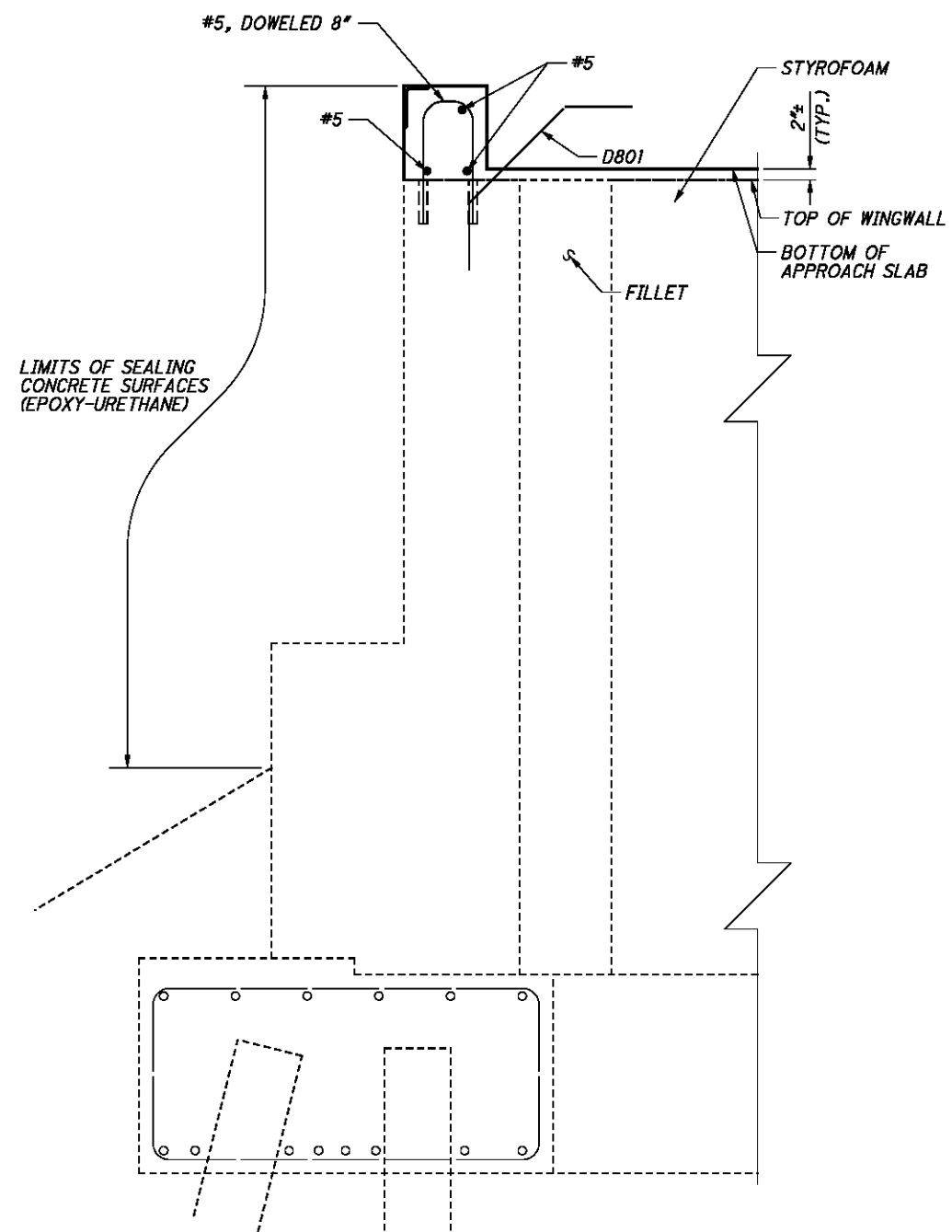


P:\PR51084\mah\24073\structures\MAH062_1825C\sheets\062_1825CAR003.dgn 4/26/2012 10:52:38 AM speck



SECTION A-A
(REAR ABUTMENT BETWEEN BEARINGS)



SECTION B-B
(REAR ABUTMENT AT FILLET)

LEGEND:
MIN. = MINIMUM
TYP. = TYPICAL

MAH-62-18.23
PID No. 24073

REAR ABUTMENT DETAILS
BRIDGE NO. MAH-62-1825
USR-62 OVER THE MAHONING RIVER AND RAILROADS

DESIGNED	DCP	CHECKED	JAA
DRAWN	DCF	REVIEWED	
REVIEWED	DWL	STRUCTURE FILE NUMBER	5008662
DATE	4-12		

DESIGN AGENCY
BURGES & NIPL
90 WEST ERIE STREET PAINESVILLE, OHIO 44071