

**BASIS FOR BEARINGS:**

THE BASIS OF BEARING IS BASED UPON THE OHIO NORTH ZONE STATE PLANE COORDINATES NAD83(95) DATUM. THE BEARINGS SHOWN ARE FOR PROJECT USE ONLY.

⊕ CURVE DATA S.R. 62  
 P.I. Sta. 823+62.86  
 $\Delta = 34^\circ 50' 02''$  (LT)  
 $Dc = 2^\circ 00' 00''$   
 $R = 2,864.79'$   
 $T = 898.70'$   
 $L = 1,741.69'$   
 $E = 137.66'$   
 $C = 1,714.99'$   
 C.B. = N 67° 57' 37" E

T-2-N, R-2-W  
 CITY OF YOUNGSTOWN  
 MAHONING COUNTY, OHIO

THE EXISTING R/W WIDTH AND LOCATION WERE DETERMINED USING:  
 RECORD PLATS  
 MAHONING COUNTY RECORD DEEDS  
 MAHONING COUNTY TAX MAP:  
 CITY OF YOUNGSTOWN - PLATE 24  
 CITY OF YOUNGSTOWN - PLATE 31  
 EXISTING PROPERTY PINS  
 EXISTING RIGHT OF WAY PLANS:  
 MAH-7-15.51



PID NO.  
**24073**

R/W DESIGNER  
 JPS  
 R/W REVIEWER  
 WJS

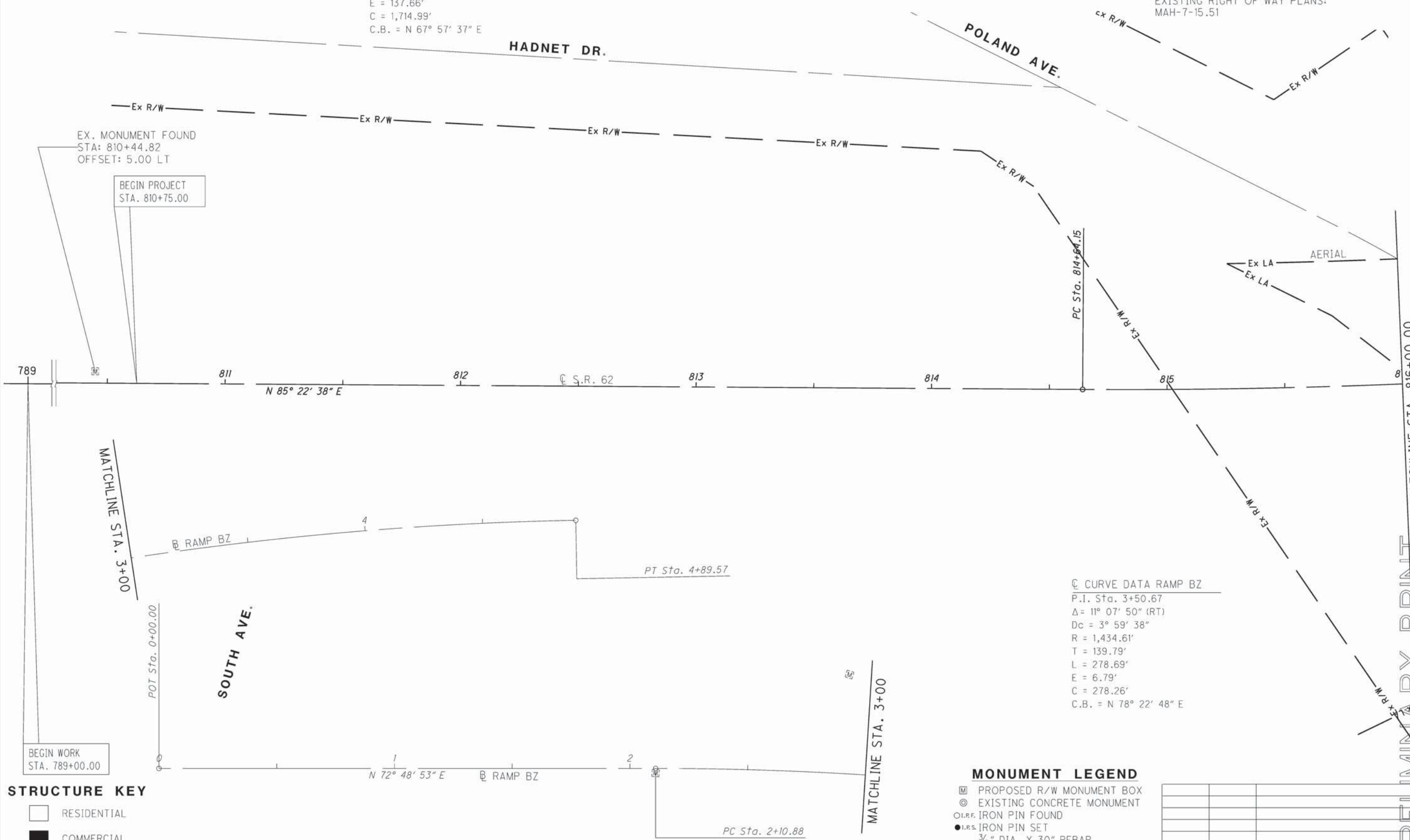
**RIGHT OF WAY BOUNDARY SHEET**  
 STA. 789+00.00 TO STA. 816+00.00

**MAH-62-18.23**

6 / 24



DATE: 27-APR-12 09:52  
 FILE: J:\JOB\60466\_MAH-62-18.23\PLAN\_SHEETS\BOUNDARY\24073R001.DGN  
 SCALE: 1" = 100'



**STRUCTURE KEY**

	RESIDENTIAL
	COMMERCIAL
	OUT-BUILDING

**MONUMENT LEGEND**

	PROPOSED R/W MONUMENT BOX
	EXISTING CONCRETE MONUMENT
	1/4" IRON PIN FOUND
	1/8" IRON PIN SET
	3/4" DIA. X 30" REBAR W/ ALUMINIUM CAP STAMPED "ODOT R/W SALA S-6542"

REV. BY	DATE	DESCRIPTION

DATE COMPLETED:

PRELIMINARY PRINT