

T-2-N, R-2-W  
CITY OF YOUNGSTOWN  
MAHONING COUNTY, OHIO

THE EXISTING R/W WIDTH AND LOCATION  
WERE DETERMINED USING:  
RECORD PLATS  
MAHONING COUNTY RECORD DEEDS  
MAHONING COUNTY TAX MAP:  
CITY OF YOUNGSTOWN - PLATE 24  
CITY OF YOUNGSTOWN - PLATE 31  
EXISTING PROPERTY PINS  
EXISTING RIGHT OF WAY PLANS:  
MAH-7-15.51

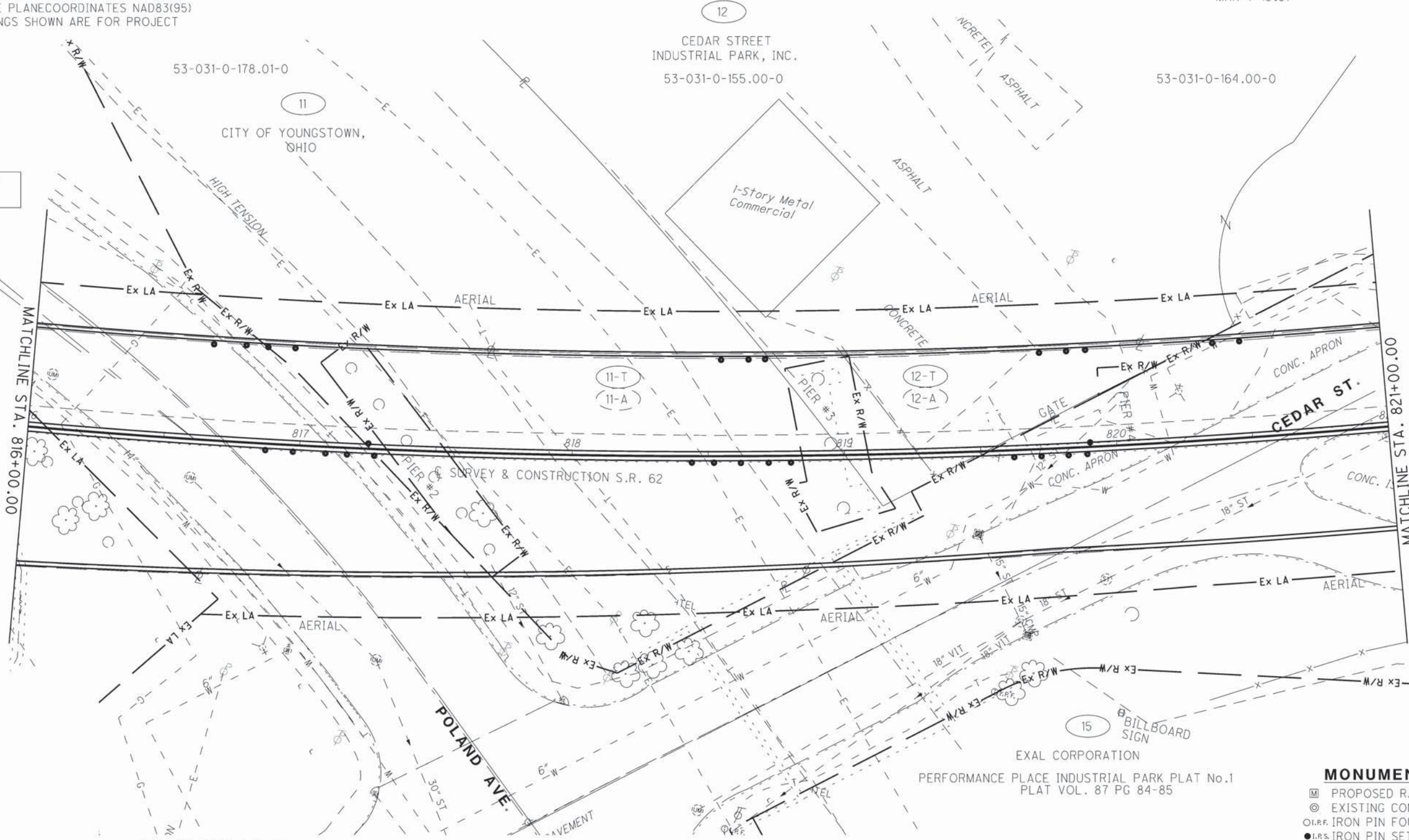
**BASIS FOR BEARINGS:**

THE BASIS OF BEARING IS BASED UPON THE OHIO  
NORTH ZONE STATE PLANE COORDINATES NAD83(95)  
DATUM. THE BEARINGS SHOWN ARE FOR PROJECT  
USE ONLY.



PID NO. **24073**  
R/W DESIGNER: JPS  
R/W REVIEWER: WJS

BEGIN ACQUISITION  
STA. 816+61.35



MATCHLINE STA. 816+00.00

MATCHLINE STA. 821+00.00

⊙ CURVE DATA S.R. 62  
P.I. Sta. 823+62.86  
Δ = 34° 50' 02" (LT)  
Dc = 2° 00' 00"  
R = 2,864.79'  
T = 898.70'  
L = 1,741.69'  
E = 137.66'  
C = 1,714.99'  
C.B. = N 67° 57' 37" E

EXAL CORPORATION  
PERFORMANCE PLACE INDUSTRIAL PARK PLAT No.1  
PLAT VOL. 87 PG 84-85

**MONUMENT LEGEND**

- ⊞ PROPOSED R/W MONUMENT BOX
- ⊙ EXISTING CONCRETE MONUMENT
- I.P.F. IRON PIN FOUND
- I.P.S. IRON PIN SET
- ⊞ 3/4" DIA. X 30" REBAR W/ ALUMINIUM CAP STAMPED "ODOT R/W SALA S-6542"

**STRUCTURE KEY**

- RESIDENTIAL
- COMMERCIAL
- ▨ OUT-BUILDING

REV. BY	DATE	DESCRIPTION

DATE COMPLETED: \_\_\_\_\_

**RIGHT OF WAY TOPO SHEET**  
**STA. 816+00.00 TO STA. 821+00.00**

**MAH-62-18.23**

**PRELIMINARY PRINT**

DATE: 27-APR-12 11:04  
FILE: J:\JOB\60466\_MAH-62-18.23\PLAN\_SHEETS\24\_RIGHT\_OF\_WAY\05\_PLAN\_SHEETS\TOP\24073R1002.DGN  
SCALE: 1" = 10'