

T-2-N, R-2-W
CITY OF YOUNGSTOWN
MAHONING COUNTY, OHIO

THE EXISTING R/W WIDTH AND LOCATION
WERE DETERMINED USING:
RECORD PLATS
MAHONING COUNTY RECORD DEEDS
MAHONING COUNTY TAX MAP:
CITY OF YOUNGSTOWN - PLATE 24
CITY OF YOUNGSTOWN - PLATE 31
EXISTING PROPERTY PINS
EXISTING RIGHT OF WAY PLANS:
MAH-7-15.51

BASIS FOR BEARINGS:

THE BASIS OF BEARING IS BASED UPON THE OHIO
NORTH ZONE STATE PLANE COORDINATES NAD83(95)
DATUM. THE BEARINGS SHOWN ARE FOR PROJECT
USE ONLY.



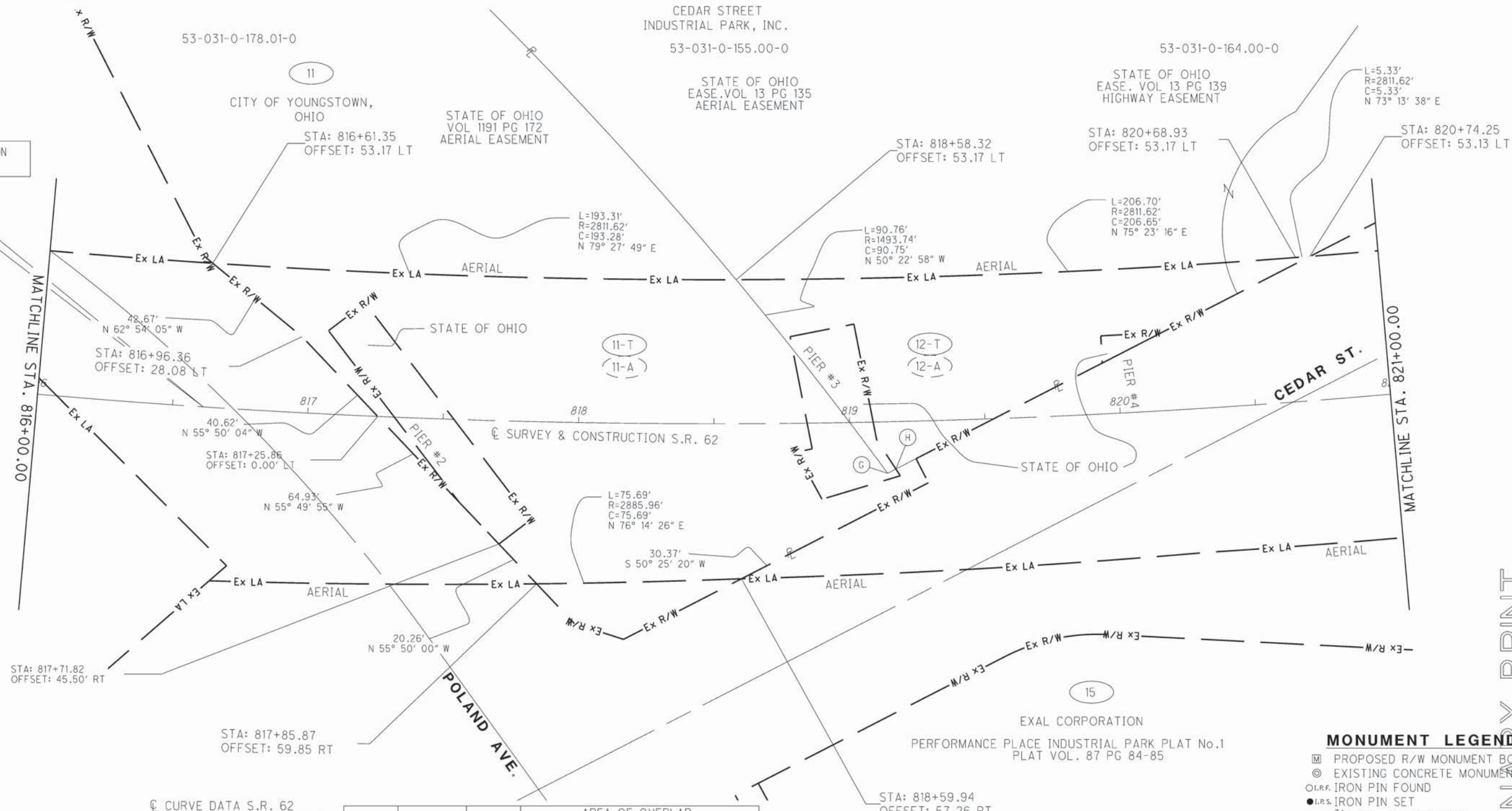
PID NO. **24073**
R/W DESIGNER: JPS
R/W REVIEWER: WJS

RIGHT OF WAY BOUNDARY SHEET
STA. 816+00.00 TO STA. 821+00.00

MAH-62-18.23

8 / 24

PRELIMINARY PRINT



BEGIN ACQUISITION
STA. 816+61.35

☉ CURVE DATA S.R. 62
P.I. Sta. 823+62.86
Δ = 34° 50' 02" (LT)
Dc = 2° 00' 00"
R = 2,864.79'
T = 898.70'
L = 1,741.69'
E = 137.66'
C = 1,714.99'
C.B. = N 67° 57' 37" E

(X)	STATION	OFFSET
G	819+13.68	19.01' RT
H	819+16.73	17.51' RT

PARCEL NUMBER	EASEMENT REQUIRED	TOTAL AREA	AREA OF OVERLAP			TEMP.
			HIGHWAY	AERIAL	TEMP.	
11-T	TEMP.	0.418				0.418
11-A		0.418	0.058	0.360		
12-T	TEMP.	0.172	0.041			0.172
12-A		0.172	0.041	0.131		

STRUCTURE KEY

- RESIDENTIAL
- COMMERCIAL
- ▨ OUT-BUILDING

MONUMENT LEGEND

- ☐ PROPOSED R/W MONUMENT BOX
- ⊙ EXISTING CONCRETE MONUMENT
- I.P.F. IRON PIN FOUND
- I.P.S. IRON PIN SET
3/4" DIA. X 30" REBAR
W/ ALUMINIUM CAP STAMPED
"ODOT R/W SALA S-6542"

REV. BY	DATE	DESCRIPTION

DATE COMPLETED:

DATE: 26-APR-12 16:07
FILE: J:\JOB\60466_MAH-62-18.23\PLAN_SHEETS\BOUNDARY\24073R0002.DGN
SCALE: 1" = 100'