

BASIS FOR BEARINGS:

THE BASIS OF BEARING IS BASED UPON THE OHIO NORTH ZONE STATE PLANE COORDINATES NAD83(95) DATUM. THE BEARINGS SHOWN ARE FOR PROJECT USE ONLY.

T-2-N, R-2-W
CITY OF YOUNGSTOWN
MAHONING COUNTY, OHIO

Ⓡ CURVE DATA RAMP B
P.I. Sta. 5+88.96
 $\Delta = 8^\circ 00' 00''$ (RT)
 $D_c = 4^\circ 00' 00''$
 $R = 1,432.39'$
 $T = 100.16'$
 $L = 200.00'$
 $E = 3.50'$
 $C = 199.84'$
C.B. = S 45° 06' 42" W

THE EXISTING R/W WIDTH AND LOCATION WERE DETERMINED USING:
RECORD PLATS
MAHONING COUNTY RECORD DEEDS
MAHONING COUNTY TAX MAP:
CITY OF YOUNGSTOWN - PLATE 24
CITY OF YOUNGSTOWN - PLATE 31
EXISTING PROPERTY PINS
EXISTING RIGHT OF WAY PLANS:
MAH-7-15.51



17

CSX CORPORATION
NORFOLK SOUTHERN CORPORATION

19

JOHN DIVER

REPLAT OF CITY LOTS 4081, 4082, 4083, 4084, 59786 AND STREET VACATED BY ORD# 52284 PLAT VOL. 81 PG 265

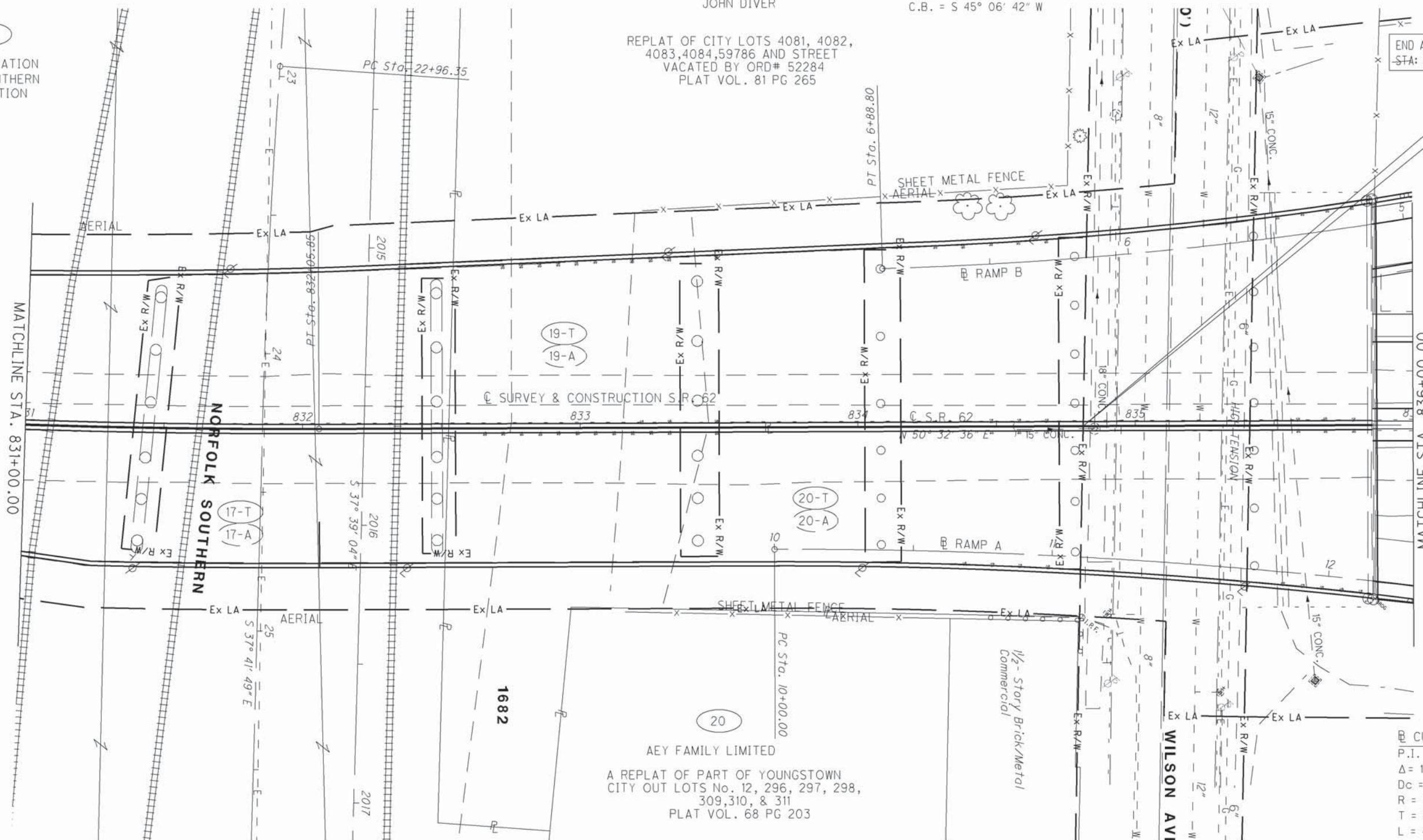
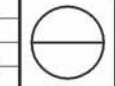
FRID. NO. **24073**

R/W DESIGNER: JPS
R/W REVIEWER: WJS

RIGHT OF WAY TOPO SHEET
STA. 831+00.00 TO STA. 836+00.00

MAH-62-18.23

13 / 24



Ⓡ CURVE DATA RAMP A
P.I. Sta. 12+05.00
 $\Delta = 12^\circ 15' 11''$ (RT)
 $D_c = 3^\circ 00' 00''$
 $R = 1,909.86'$
 $T = 205.00'$
 $L = 408.44'$
 $E = 10.97'$
 $C = 407.66'$
C.B. = N 56° 40' 12" E

Ⓡ CURVE DATA S.R. 62
P.I. Sta. 823+62.86
 $\Delta = 34^\circ 50' 02''$ (LT)
 $D_c = 2^\circ 00' 00''$
 $R = 2,864.79'$
 $T = 898.70'$
 $L = 1,741.69'$
 $E = 137.66'$
 $C = 1,714.99'$
C.B. = N 67° 57' 37" E

MONUMENT LEGEND

- Ⓡ PROPOSED R/W MONUMENT BOX
- Ⓢ EXISTING CONCRETE MONUMENT
- I.P.S. IRON PIN FOUND
- I.P.S. IRON PIN SET
- Ⓢ 3/4" DIA. X 30" REBAR
- W/ ALUMINIUM CAP STAMPED
- "ODOT R/W SALA S-6542"

STRUCTURE KEY

- RESIDENTIAL
- COMMERCIAL
- ▨ OUT-BUILDING

REV. BY	DATE	DESCRIPTION

DATE COMPLETED:

PRELIMINARY PRINT

DATE: 26-APR-12 10:20
FILE: J:\JOB\60466_MAH-62-18-23\PLAN_SHEETS\24_RIGHT_OF_WAY\05_PLAN_SHEETS\TOP\24073R1005.DGN
SCALE: 1" = 100'