

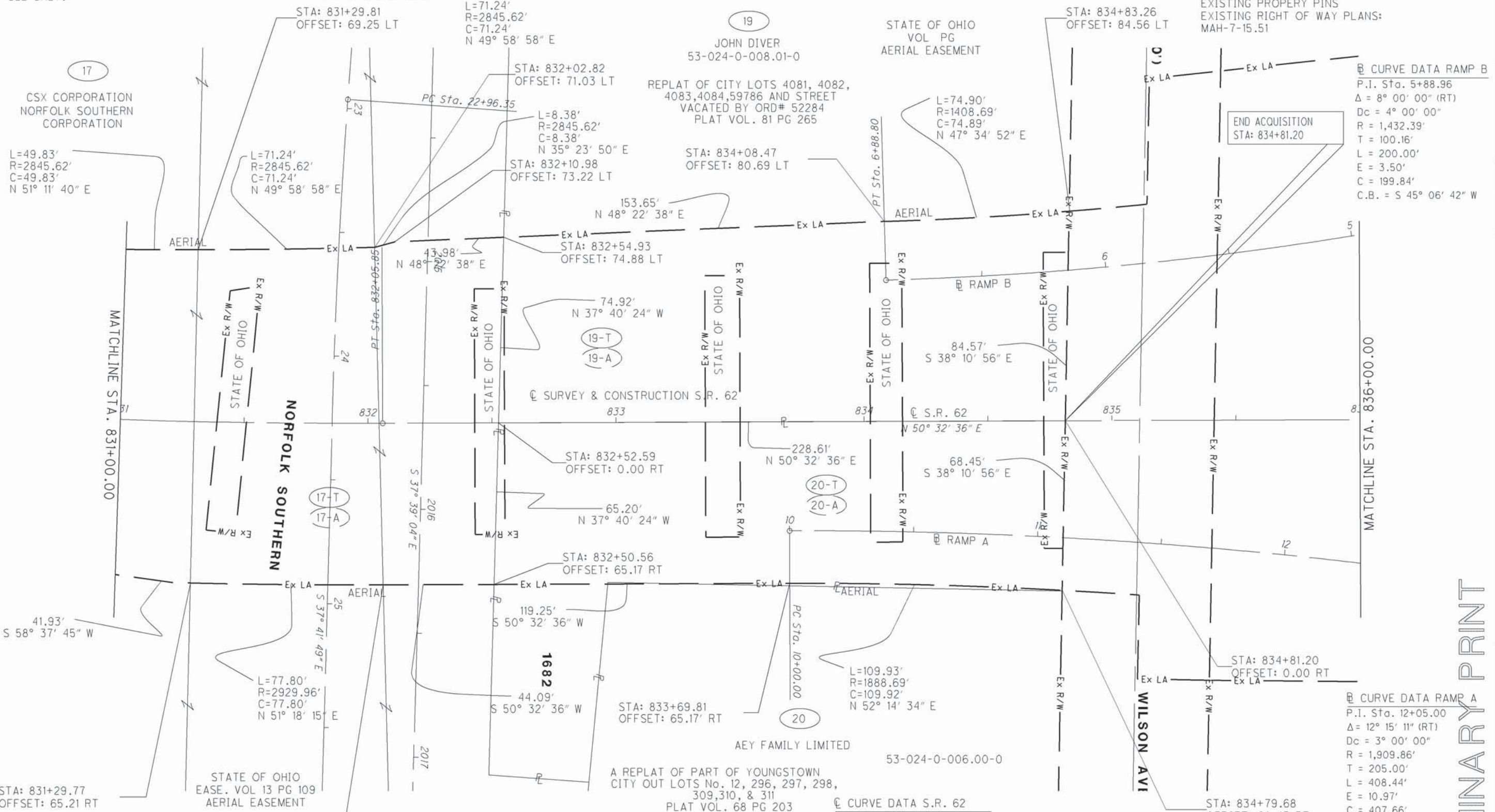
BASIS FOR BEARINGS:

THE BASIS OF BEARING IS BASED UPON THE OHIO NORTH ZONE STATE PLANE COORDINATES NAD83(95) DATUM. THE BEARINGS SHOWN ARE FOR PROJECT USE ONLY.

STATE OF OHIO
EASE. VOL 13 PG 53
EASE. VOL 13 PG 109
HIGHWAY EASEMENT

T-2-N, R-2-W
CITY OF YOUNGSTOWN
MAHONING COUNTY, OHIO

THE EXISTING R/W WIDTH AND LOCATION WERE DETERMINED USING:
RECORD PLATS
MAHONING COUNTY RECORD DEEDS
MAHONING COUNTY TAX MAP:
CITY OF YOUNGSTOWN - PLATE 24
CITY OF YOUNGSTOWN - PLATE 31
EXISTING PROPERTY PINS
EXISTING RIGHT OF WAY PLANS:
MAH-7-15.51



STRUCTURE KEY

- RESIDENTIAL
- COMMERCIAL
- OUT-BUILDING

PARCEL NUMBER	EASEMENT REQUIRED	TOTAL AREA	AREA OF OVERLAP			
			EXISTING HIGHWAY	AERIAL	HIGHWAY	TEMP.
17-T	TEMP.	0.379		0.379		
17-A		0.379	0.027	0.352		0.379
19-T	TEMP.	0.914		0.914		
19-A		0.914	0.113	0.801		0.914
20-T	TEMP.	0.914		0.914		
20-A		0.914	0.113	0.801		0.914

MONUMENT LEGEND

- PROPOSED R/W MONUMENT BOX
- EXISTING CONCRETE MONUMENT
- O.I.P.F. IRON PIN FOUND
- I.P.S. IRON PIN SET
- 3/4" DIA. X 30" REBAR
- W/ ALUMINIUM CAP STAMPED
- "ODOT R/W SALA S-6542"

REV. BY	DATE	DESCRIPTION

DATE COMPLETED: _____

FRID. INO. 24073

R/W DESIGNER JPS
R/W REVIEWER WJS

RIGHT OF WAY BOUNDARY SHEET
STA. 831+00.00 TO STA. 836+00.00

MAH-62-18.23

PRELIMINARY PRINT

DATE: 27-APR-12 10:17
FILE: J:\JOB\6046B-MAH-62-18-23\PLAN_SHEETS\24_RIGHT_OF_WAY\05_PLAN_SHEETS\BOUNDARY\24073R0005.DGN
SCALE: 1" = 100'