

**BASIS FOR BEARINGS:**

THE BASIS OF BEARING IS BASED UPON THE OHIO NORTH ZONE STATE PLANE COORDINATES NAD83(95) DATUM. THE BEARINGS SHOWN ARE FOR PROJECT USE ONLY.

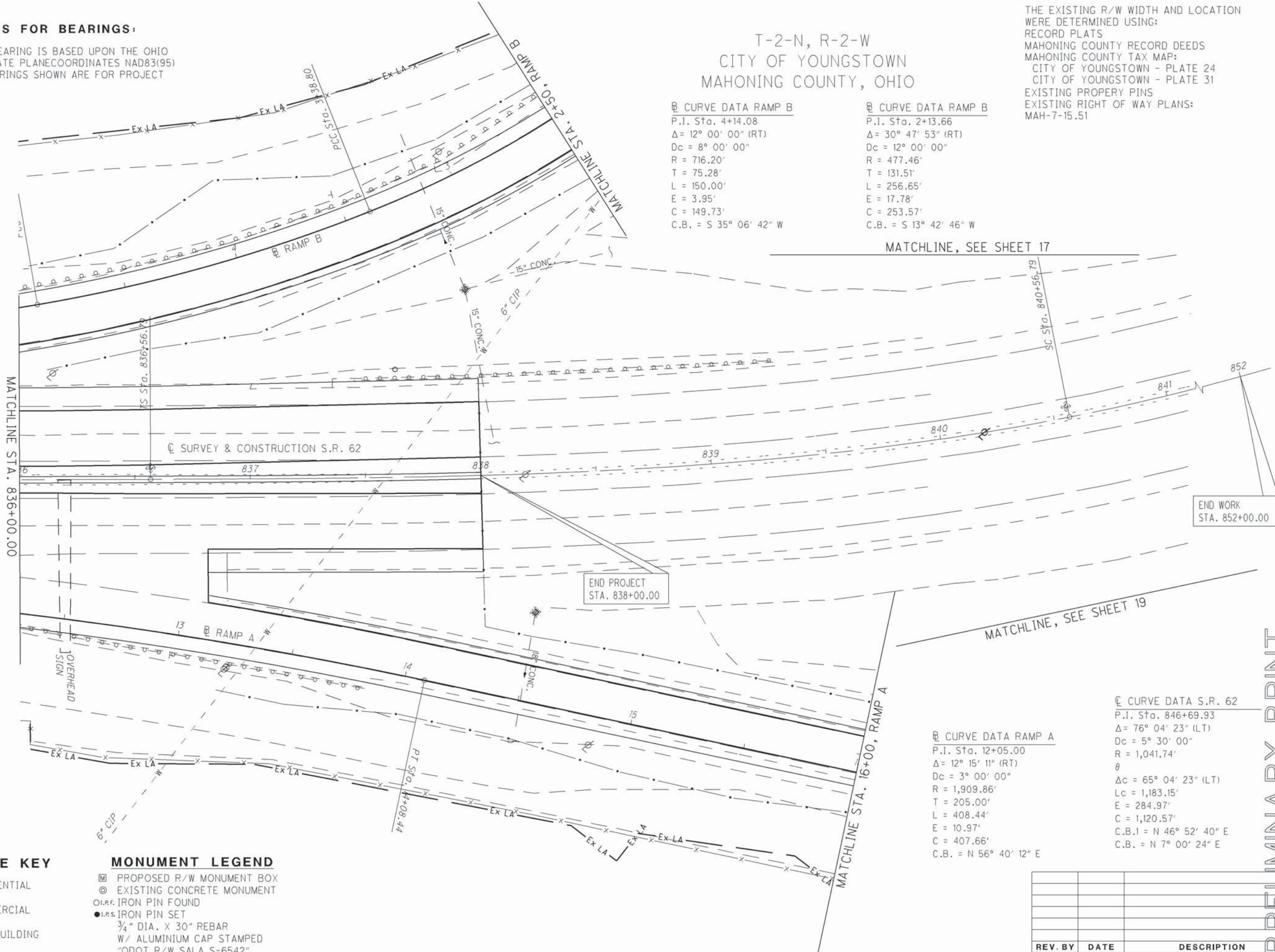
T-2-N, R-2-W  
CITY OF YOUNGSTOWN  
MAHONING COUNTY, OHIO

THE EXISTING R/W WIDTH AND LOCATION WERE DETERMINED USING:  
RECORD PLATS  
MAHONING COUNTY RECORD DEEDS  
MAHONING COUNTY TAX MAP:  
CITY OF YOUNGSTOWN - PLATE 24  
CITY OF YOUNGSTOWN - PLATE 31  
EXISTING PROPERTY PINS  
EXISTING RIGHT OF WAY PLANS:  
MAH-7-15.51

**⊕ CURVE DATA RAMP B**  
P.I. Sta. 4+14.08  
Δ = 12° 00' 00" (RT)  
Dc = 8° 00' 00"  
R = 716.20'  
T = 75.28'  
L = 150.00'  
E = 3.95'  
C = 149.73'  
C.B. = S 35° 06' 42" W

**⊕ CURVE DATA RAMP B**  
P.I. Sta. 2+13.66  
Δ = 30° 47' 53" (RT)  
Dc = 12° 00' 00"  
R = 477.46'  
T = 131.51'  
L = 256.65'  
E = 17.78'  
C = 253.57'  
C.B. = S 13° 42' 46" W

MATCHLINE, SEE SHEET 17



END WORK  
STA. 852+00.00

END PROJECT  
STA. 838+00.00

MATCHLINE, SEE SHEET 19

**⊕ CURVE DATA RAMP A**  
P.I. Sta. 12+05.00  
Δ = 12° 15' 11" (RT)  
Dc = 3° 00' 00"  
R = 1,909.86'  
T = 205.00'  
L = 408.44'  
E = 10.97'  
C = 407.66'  
C.B. = N 56° 40' 12" E

**⊕ CURVE DATA S.R. 62**  
P.I. Sta. 846+69.93  
Δ = 76° 04' 23" (LT)  
Dc = 5° 30' 00"  
R = 1,041.74'  
θ  
Δc = 65° 04' 23" (LT)  
Lc = 1,183.15'  
E = 284.97'  
C = 1,120.57'  
C.B.1 = N 46° 52' 40" E  
C.B. = N 7° 00' 24" E

**STRUCTURE KEY**

- RESIDENTIAL
- COMMERCIAL
- OUT-BUILDING

**MONUMENT LEGEND**

- PROPOSED R/W MONUMENT BOX
- EXISTING CONCRETE MONUMENT
- O.I.P.F. IRON PIN FOUND
- I.P.S. IRON PIN SET
- 3/4" DIA. X 30" REBAR
- W/ ALUMINIUM CAP STAMPED
- "ODOT R/W SALA S-6542"

REV. BY	DATE	DESCRIPTION

DATE COMPLETED: \_\_\_\_\_

PRELIMINARY PRINT

HORIZONTAL SCALE IN FEET

R/W DESIGNER  
JPS

R/W REVIEWER  
WJS

PID NO.

24073

RIGHT OF WAY TOPO SHEET

STA. 836+00.00 TO STA. 852+00.00

MAH-62-18.23

15 / 24

DATE COMPLETED: \_\_\_\_\_

DATE: 27-APR-12 10:00  
FILE: J:\JOB\60466\_MAH-62-18-23\PLAN\_SHEETS\24\_RIGHT\_OF\_WAY\05\_PLAN\_SHEETS\TOP\24073R1006.DGN  
SCALE: 1" = 10'