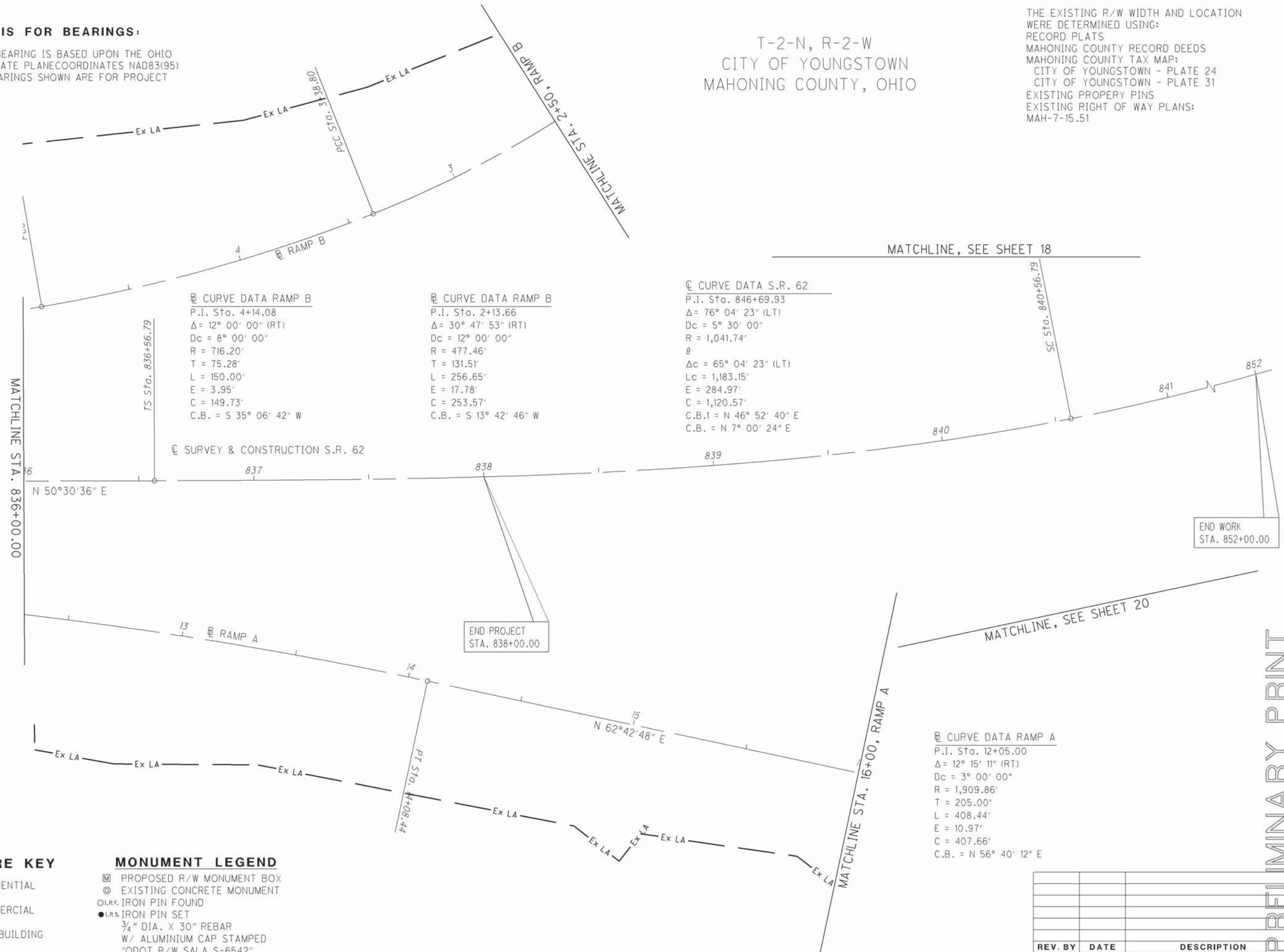
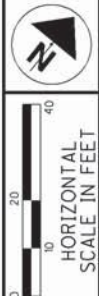


BASIS FOR BEARINGS:

THE BASIS OF BEARING IS BASED UPON THE OHIO NORTH ZONE STATE PLANE COORDINATES NAD83(95) DATUM. THE BEARINGS SHOWN ARE FOR PROJECT USE ONLY.

T-2-N, R-2-W
CITY OF YOUNGSTOWN
MAHONING COUNTY, OHIO

THE EXISTING R/W WIDTH AND LOCATION WERE DETERMINED USING:
RECORD PLATS
MAHONING COUNTY RECORD DEEDS
MAHONING COUNTY TAX MAP:
CITY OF YOUNGSTOWN - PLATE 24
CITY OF YOUNGSTOWN - PLATE 31
EXISTING PROPERTY PINS
EXISTING RIGHT OF WAY PLANS:
MAH-7-15.51



Ⓢ CURVE DATA RAMP B

P.I. Sta. 4+14.08
 $\Delta = 12^\circ 00' 00''$ (RT)
 $Dc = 8^\circ 00' 00''$
 $R = 716.20'$
 $T = 75.28'$
 $L = 150.00'$
 $E = 3.95'$
 $C = 149.73'$
 C.B. = S $35^\circ 06' 42''$ W

Ⓢ CURVE DATA RAMP B

P.I. Sta. 2+13.66
 $\Delta = 30^\circ 47' 53''$ (RT)
 $Dc = 12^\circ 00' 00''$
 $R = 477.46'$
 $T = 131.51'$
 $L = 256.65'$
 $E = 17.78'$
 $C = 253.57'$
 C.B. = S $13^\circ 42' 46''$ W

Ⓢ CURVE DATA S.R. 62

P.I. Sta. 846+69.93
 $\Delta = 76^\circ 04' 23''$ (LT)
 $Dc = 5^\circ 30' 00''$
 $R = 1,041.74'$
 θ
 $\Delta c = 65^\circ 04' 23''$ (LT)
 $Lc = 1,183.15'$
 $E = 284.97'$
 $C = 1,120.57'$
 C.B.1 = N $46^\circ 52' 40''$ E
 C.B. = N $7^\circ 00' 24''$ E

Ⓢ SURVEY & CONSTRUCTION S.R. 62

Ⓢ CURVE DATA RAMP A

P.I. Sta. 12+05.00
 $\Delta = 12^\circ 15' 11''$ (RT)
 $Dc = 3^\circ 00' 00''$
 $R = 1,909.86'$
 $T = 205.00'$
 $L = 408.44'$
 $E = 10.97'$
 $C = 407.66'$
 C.B. = N $56^\circ 40' 12''$ E

END PROJECT
STA. 838+00.00

END WORK
STA. 852+00.00

STRUCTURE KEY

- RESIDENTIAL
- COMMERCIAL
- OUT-BUILDING

MONUMENT LEGEND

- PROPOSED R/W MONUMENT BOX
- EXISTING CONCRETE MONUMENT
- O.I.R.F. IRON PIN FOUND
- I.P.S. IRON PIN SET
- $\frac{3}{4}$ " DIA. X 30" REBAR
- W/ ALUMINIUM CAP STAMPED
- "ODOT R/W SALA S-6542"

REV. BY	DATE	DESCRIPTION

DATE COMPLETED: _____

PID NO.
24073

R/W DESIGNER
JPS
R/W REVIEWER
WJS

RIGHT OF WAY BOUNDARY SHEET
STA. 836+00.00 TO STA. 852+00.00

MAH-62-18.23

16 / 24

PRELIMINARY PRINT

DATE: 27-APR-12 10:05
FILE: J:\JOB\60466_MAH-62-18.23\PLAN_SHEETS\BOUNDARY\24073R006.DGN
SCALE: 1" = 100'