

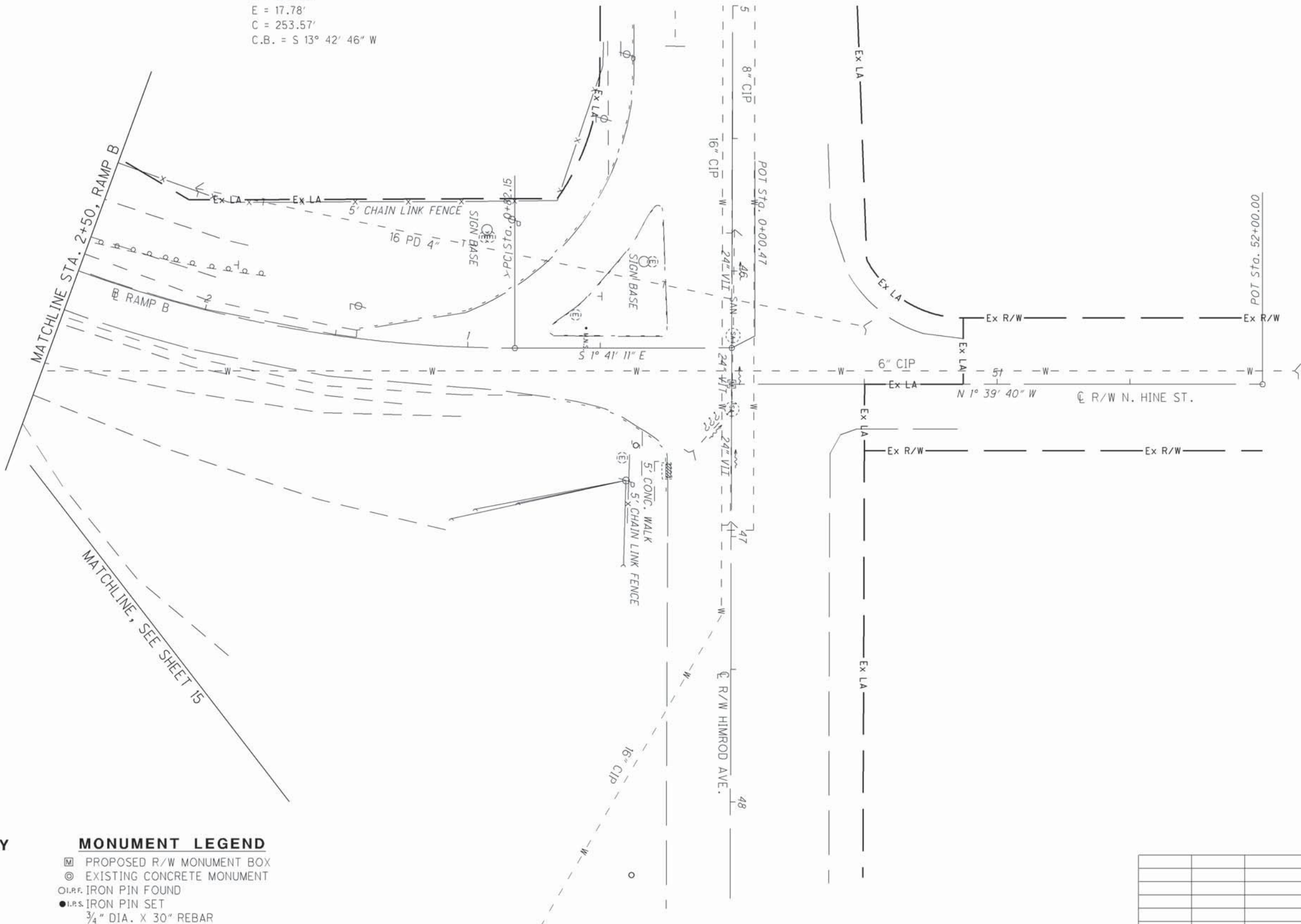
BASIS FOR BEARINGS:

THE BASIS OF BEARING IS BASED UPON THE OHIO NORTH ZONE STATE PLANE COORDINATES NAD83(95) DATUM. THE BEARINGS SHOWN ARE FOR PROJECT USE ONLY.

☉ CURVE DATA RAMP B
 P.I. Sta. 2+13.66
 $\Delta = 30^\circ 47' 53''$ (RT)
 $D_c = 12^\circ 00' 00''$
 $R = 477.46'$
 $T = 131.51'$
 $L = 256.65'$
 $E = 17.78'$
 $C = 253.57'$
 C.B. = S $13^\circ 42' 46''$ W

T-2-N, R-2-W
 CITY OF YOUNGSTOWN
 MAHONING COUNTY, OHIO

THE EXISTING R/W WIDTH AND LOCATION WERE DETERMINED USING:
 RECORD PLATS
 MAHONING COUNTY RECORD DEEDS
 MAHONING COUNTY TAX MAP:
 CITY OF YOUNGSTOWN - PLATE 24
 CITY OF YOUNGSTOWN - PLATE 31
 EXISTING PROPERTY PINS
 EXISTING RIGHT OF WAY PLANS:
 MAH-7-15.51



STRUCTURE KEY

- RESIDENTIAL
- COMMERCIAL
- OUT-BUILDING

MONUMENT LEGEND

- PROPOSED R/W MONUMENT BOX
- EXISTING CONCRETE MONUMENT
- I.P.F. IRON PIN FOUND
- I.P.S. IRON PIN SET
- 3/4" DIA. X 30" REBAR W/ ALUMINIUM CAP STAMPED "ODOT R/W SALA S-6542"

REV. BY	DATE	DESCRIPTION

DATE COMPLETED: _____

PRELIMINARY PRINT

PID NO.
24073

RIGHT OF WAY TOPO SHEET
STA. 2+50.00 TO STA. 0+00.47

MAH-62-18.23

DATE: 27-APR-12 07:30
 FILE: J:\JOB\60466_MAH-62-18-23\PLAN_SHEETS\24_RIGHT_OF_WAY\05_PLAN_SHEETS\TOP\24073R1007.DGN
 SCALE: 1" = 10'