

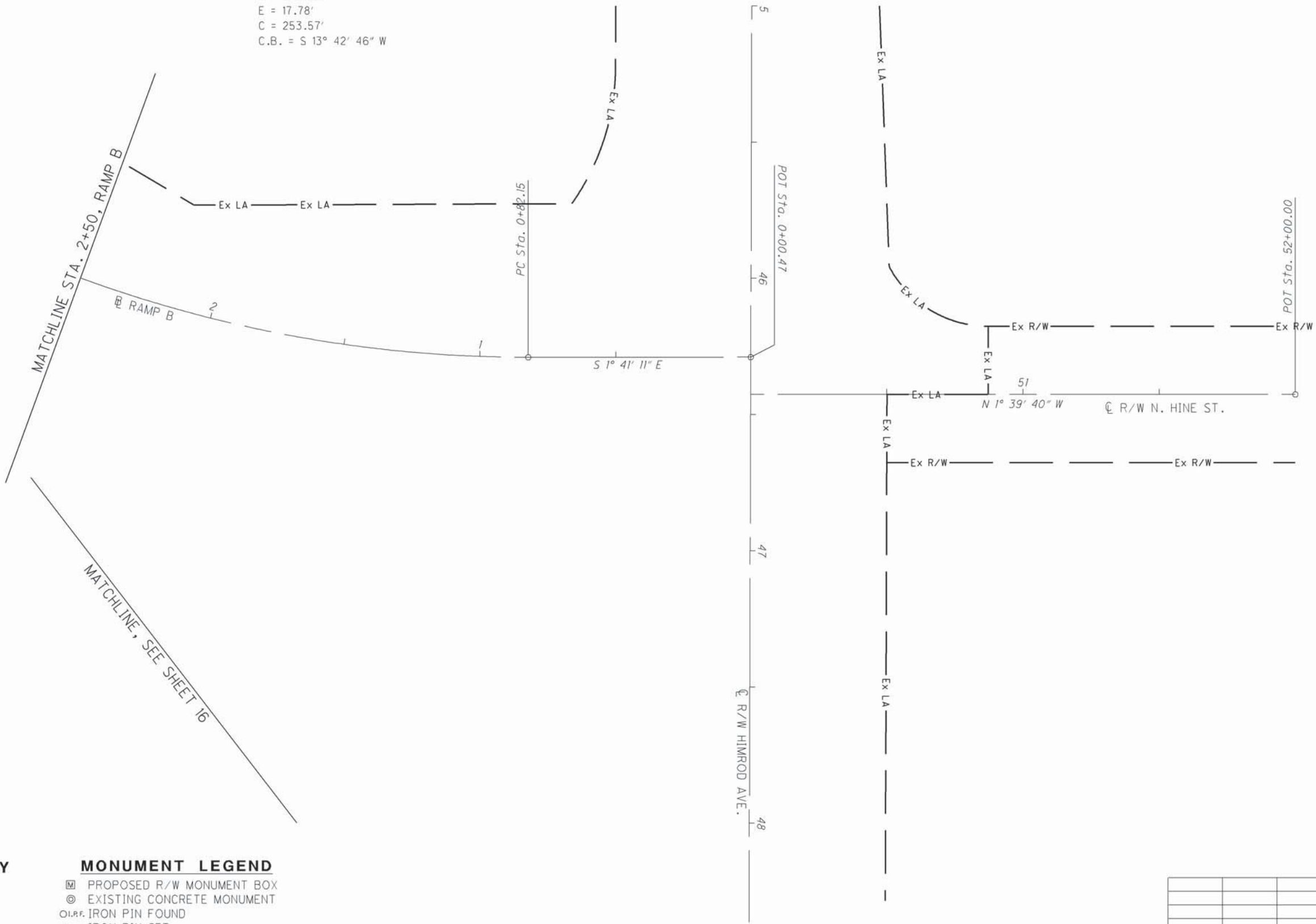
**BASIS FOR BEARINGS:**

THE BASIS OF BEARING IS BASED UPON THE OHIO NORTH ZONE STATE PLANE COORDINATES NAD83(95) DATUM. THE BEARINGS SHOWN ARE FOR PROJECT USE ONLY.

☉ CURVE DATA RAMP B  
 P.I. Sta. 2+13.66  
 $\Delta = 30^\circ 47' 53''$  (RT)  
 $Dc = 12^\circ 00' 00''$   
 $R = 477.46'$   
 $T = 131.51'$   
 $L = 256.65'$   
 $E = 17.78'$   
 $C = 253.57'$   
 C.B. = S  $13^\circ 42' 46''$  W

T-2-N, R-2-W  
 CITY OF YOUNGSTOWN  
 MAHONING COUNTY, OHIO

THE EXISTING R/W WIDTH AND LOCATION WERE DETERMINED USING:  
 RECORD PLATS  
 MAHONING COUNTY RECORD DEEDS  
 MAHONING COUNTY TAX MAP:  
 CITY OF YOUNGSTOWN - PLATE 24  
 CITY OF YOUNGSTOWN - PLATE 31  
 EXISTING PROPERTY PINS  
 EXISTING RIGHT OF WAY PLANS:  
 MAH-7-15.51



DATE: 27-APR-12 10:18  
 FILE: J:\JOB\60466\_MAH-62-18-23\PLAN\_SHEETS\24\_RIGHT\_OF\_WAY\05\_PLAN\_SHEETS\BOUNDARY\24073RB007.DGN  
 SCALE: 1" = 10'

**STRUCTURE KEY**

	RESIDENTIAL
	COMMERCIAL
	OUT-BUILDING

**MONUMENT LEGEND**

	PROPOSED R/W MONUMENT BOX
	EXISTING CONCRETE MONUMENT
	EXISTING IRON PIN FOUND
	EXISTING IRON PIN SET
	3/4" DIA. X 30" REBAR
	W/ ALUMINIUM CAP STAMPED
	"ODOT R/W SALA S-6542"

REV. BY	DATE	DESCRIPTION

DATE COMPLETED: \_\_\_\_\_

PRELIMINARY PRINT

PID NO.	24073
R/W DESIGNER	JPS
R/W REVIEWER	WJS
<b>RIGHT OF WAY BOUNDARY SHEET</b>	<b>STA. 2+50.00 TO STA. 0+00.47</b>
MAH-62-18.23	18 / 24