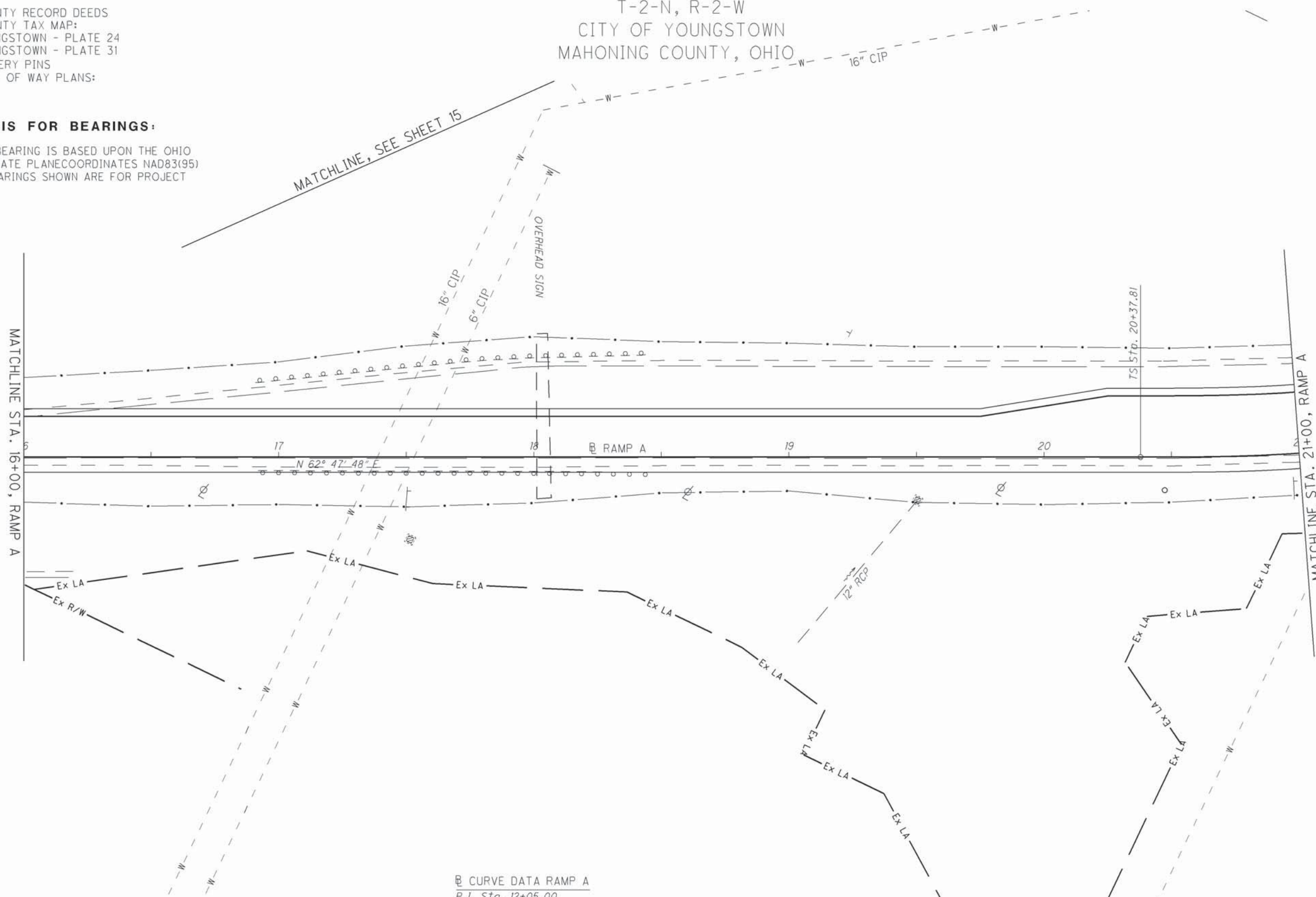


THE EXISTING R/W WIDTH AND LOCATION WERE DETERMINED USING:  
 RECORD PLATS  
 MAHONING COUNTY RECORD DEEDS  
 MAHONING COUNTY TAX MAP:  
 CITY OF YOUNGSTOWN - PLATE 24  
 CITY OF YOUNGSTOWN - PLATE 31  
 EXISTING PROPERTY PINS  
 EXISTING RIGHT OF WAY PLANS:  
 MAH-7-15.51

T-2-N, R-2-W  
 CITY OF YOUNGSTOWN  
 MAHONING COUNTY, OHIO

**BASIS FOR BEARINGS:**

THE BASIS OF BEARING IS BASED UPON THE OHIO NORTH ZONE STATE PLANE COORDINATES NAD83(95) DATUM. THE BEARINGS SHOWN ARE FOR PROJECT USE ONLY.



MATCHLINE STA. 16+00, RAMP A

MATCHLINE STA. 21+00, RAMP A

**Ⓜ CURVE DATA RAMP A**  
 P.I. Sta. 12+05.00  
 $\Delta = 12^\circ 15' 11''$  (RT)  
 $D_c = 3^\circ 00' 00''$   
 $R = 1,909.86'$   
 $T = 205.00'$   
 $L = 408.44'$   
 $E = 10.97'$   
 $C = 407.66'$   
 $C.B. = N 56^\circ 40' 12'' E$

**STRUCTURE KEY**

- RESIDENTIAL
- COMMERCIAL
- OUT-BUILDING

**MONUMENT LEGEND**

- PROPOSED R/W MONUMENT BOX
- EXISTING CONCRETE MONUMENT
- O.I.P.F. IRON PIN FOUND
- I.P.S. IRON PIN SET
- 3/4" DIA. X 30" REBAR
- W/ ALUMINIUM CAP STAMPED
- "ODOT R/W SALA S-6542"

REV. BY	DATE	DESCRIPTION

DATE COMPLETED: \_\_\_\_\_

PRELIMINARY PRINT

HORIZONTAL SCALE IN FEET

0 20 40

R/W DESIGNER  
JPS

R/W REVIEWER  
WJS

PID NO.

**24073**

RIGHT OF WAY TOPO SHEET

STA. 15+00.00 TO STA. 21+00.00

MAH-62-18.23

19 / 24

DATE: 26-APR-12 10:21  
 FILE: J:\JOB\60466\_MAH-62-18-23\PLAN\_SHEETS\24\_RIGHT\_OF\_WAY\05\_PLAN\_SHEETS\TOP\24073R1008.DGN  
 SCALE: 1" = 100'