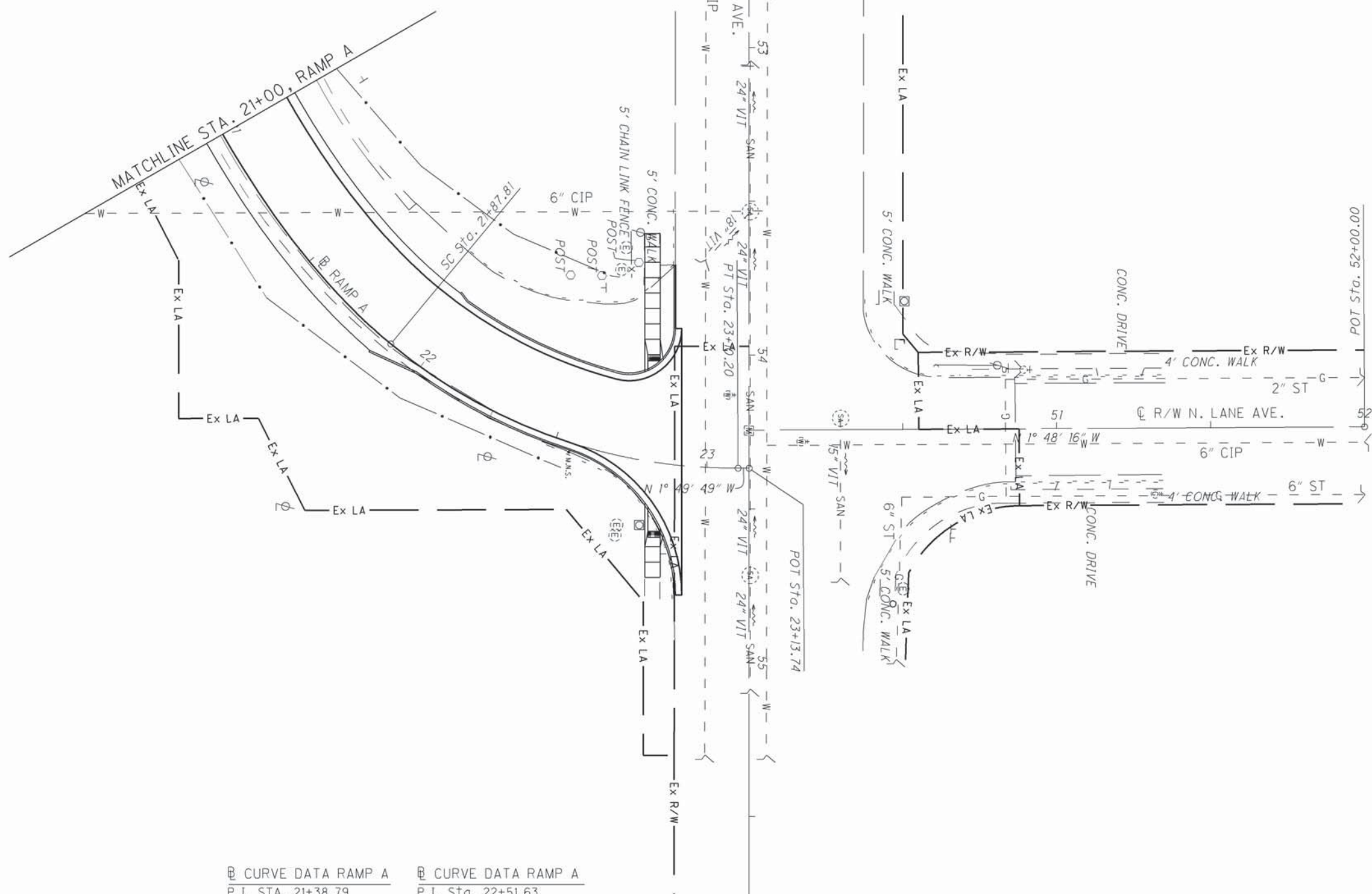


BASIS FOR BEARINGS:

THE BASIS OF BEARING IS BASED UPON THE OHIO NORTH ZONE STATE PLANE COORDINATES NAD83(95) DATUM. THE BEARINGS SHOWN ARE FOR PROJECT USE ONLY.

T-2-N, R-2-W
CITY OF YOUNGSTOWN
MAHONING COUNTY, OHIO

THE EXISTING R/W WIDTH AND LOCATION WERE DETERMINED USING:
RECORD PLATS
MAHONING COUNTY RECORD DEEDS
MAHONING COUNTY TAX MAP:
CITY OF YOUNGSTOWN - PLATE 24
CITY OF YOUNGSTOWN - PLATE 31
EXISTING PROPERTY PINS
EXISTING RIGHT OF WAY PLANS:
MAH-7-15.51



<p>Ⓢ CURVE DATA RAMP A P.I. STA. 21+38.79 Ls = 150.00' Δs = 24° 33' 20" LT = 100.98' ST = 50.89' x = 147.27' y = 21.15' k = 74.54' p = 5.32'</p>	<p>Ⓢ CURVE DATA RAMP A P.I. STA. 22+51.63 Δ = 40° 04' 21" (LT) Dc = 32° 44' 26" R = 175.00' T = 63.82' L = 122.39' E = 11.27' C = 119.92' C.B. = N 18° 12' 20" E</p>
--	--

STRUCTURE KEY

- RESIDENTIAL
- COMMERCIAL
- OUT-BUILDING

MONUMENT LEGEND

- PROPOSED R/W MONUMENT BOX
- EXISTING CONCRETE MONUMENT
- I.R.P.F. IRON PIN FOUND
- I.R.S. IRON PIN SET
- 3/4" DIA. X 30" REBAR
- W/ ALUMINIUM CAP STAMPED
- "ODOT R/W SALA S-6542"

R/W DESIGNER: JPS
R/W REVIEWER: WJS
PID NO.: 24073

RIGHT OF WAY TOPO SHEET
STA. 21+00.00 TO STA. 23+10.20

MAH-62-18.23

PRELIMINARY PRINT

REV. BY	DATE	DESCRIPTION

DATE COMPLETED: _____

DATE: 26-APR-12 10:22
FILE: J:\JOB\60466-MAH-62-18-23\PLAN_SHEETS\24_RIGHT_OF_WAY\05_PLAN_SHEETS\TOP\24073R1009.DGN
SCALE: 1" = 10'