

**BASIS FOR BEARINGS:**

THE BASIS OF BEARING IS BASED UPON THE OHIO NORTH ZONE STATE PLANE COORDINATES NAD83(95) DATUM. THE BEARINGS SHOWN ARE FOR PROJECT USE ONLY.

T-2-N, R-2-W  
CITY OF YOUNGSTOWN  
MAHONING COUNTY, OHIO

THE EXISTING R/W WIDTH AND LOCATION WERE DETERMINED USING:  
RECORD PLATS  
MAHONING COUNTY RECORD DEEDS  
MAHONING COUNTY TAX MAP:  
CITY OF YOUNGSTOWN - PLATE 24  
CITY OF YOUNGSTOWN - PLATE 31  
EXISTING PROPERTY PINS  
EXISTING RIGHT OF WAY PLANS:  
MAH-7-15.51



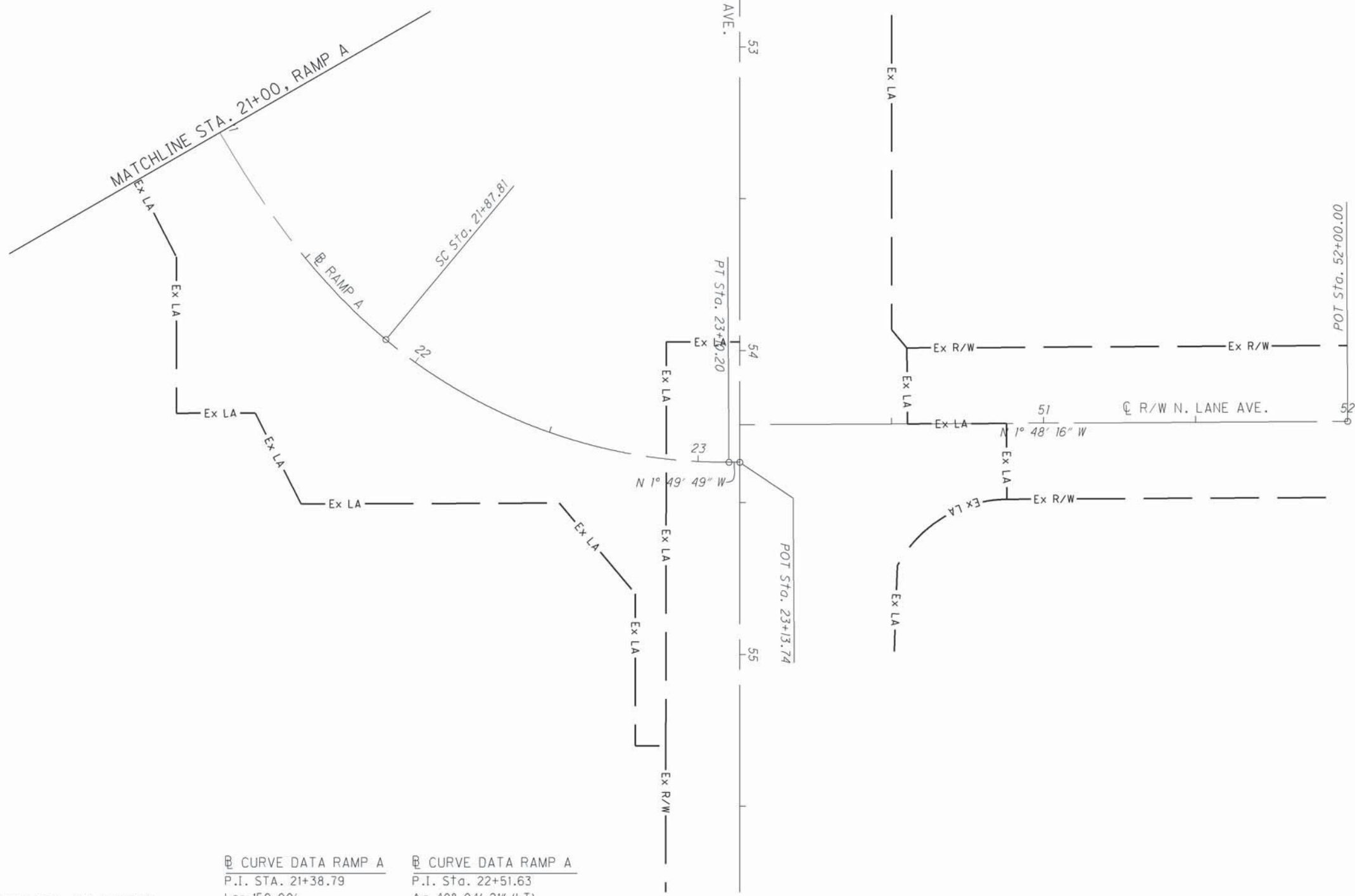
PID NO. **24073**  
R/W DESIGNER: JPS  
R/W REVIEWER: WJS

**RIGHT OF WAY BOUNDARY SHEET**  
**STA. 21+00.00 TO STA. 23+10.20**

**MAH-62-18.23**

22 / 24

PRELIMINARY PRINT



<p><b>Ⓜ CURVE DATA RAMP A</b>                  P.I. STA. 21+38.79                  Ls = 150.00'                  Δ = 24° 33' 20"                  LT = 100.98'                  ST = 50.89'                  x = 147.27'                  y = 21.15'                  k = 74.54'                  p = 5.32'</p>	<p><b>Ⓜ CURVE DATA RAMP A</b>                  P.I. STA. 22+51.63                  Δ = 40° 04' 21" (LT)                  Dc = 32° 44' 26"                  R = 175.00'                  T = 63.82'                  L = 122.39'                  E = 11.27'                  C = 119.92'                  C.B. = N 18° 12' 20" E</p>
---	--

**STRUCTURE KEY**

- RESIDENTIAL
- COMMERCIAL
- OUT-BUILDING

**MONUMENT LEGEND**

- PROPOSED R/W MONUMENT BOX
- EXISTING CONCRETE MONUMENT
- O.I.P.F. IRON PIN FOUND
- I.P.S. IRON PIN SET
- 3/4" DIA. X 30" REBAR
- W/ ALUMINIUM CAP STAMPED
- "ODOT R/W SALA S-6542"

REV. BY	DATE	DESCRIPTION

DATE COMPLETED:

DATE: 26-APR-12 10:37  
FILE: J:\JOB\6046B-MAH-62-18.23\PLAN\_SHEETS\24\_RIGHT\_OF\_WAY\05\_PLAN\_SHEETS\BOUNDARY\24073R0009.DGN  
SCALE: 1" = 10'