

T-2-N, R-2-W
CITY OF YOUNGSTOWN
YOUNGSTOWN TOWNSHIP
MAHONING COUNTY

☉ CURVE DATA S.R. 62
P.I. Sta = 823+62.85
D = 34° 50' 02" (LT)
Dc = 2° 00' 00"
R = 2864.79'
T = 898.70'
L = 1741.69'
E = 137.65'

17
CSX CORPORATION
NORFOLK SOUTHERN
CORPORATION

RAILROAD INFORMATION TAKEN FROM THE FORMERLY OWNED AND OPERATED BY BALTIMORE & OHIO RAILROAD COMPANY OPERATED BY BALTIMORE & OHIO RAILROAD COMPANY AKRON-CHICAGO DIVISION RIGHT OF WAY AND TRACK MAP V 114.2 PAGE 2 & V-114.1 PAGE 8

NOTE: THE EXISTING RIGHT OF WAY WIDTH AND LOCATION WERE DETERMINE USING:
- EASEMENT RECORDED IN VOL. 1110, PAGE 177 ON THE MAHONING COUNTY RECORDS
- PREVIOUS RIGHT OF WAY PLANS MAH-7-15.51



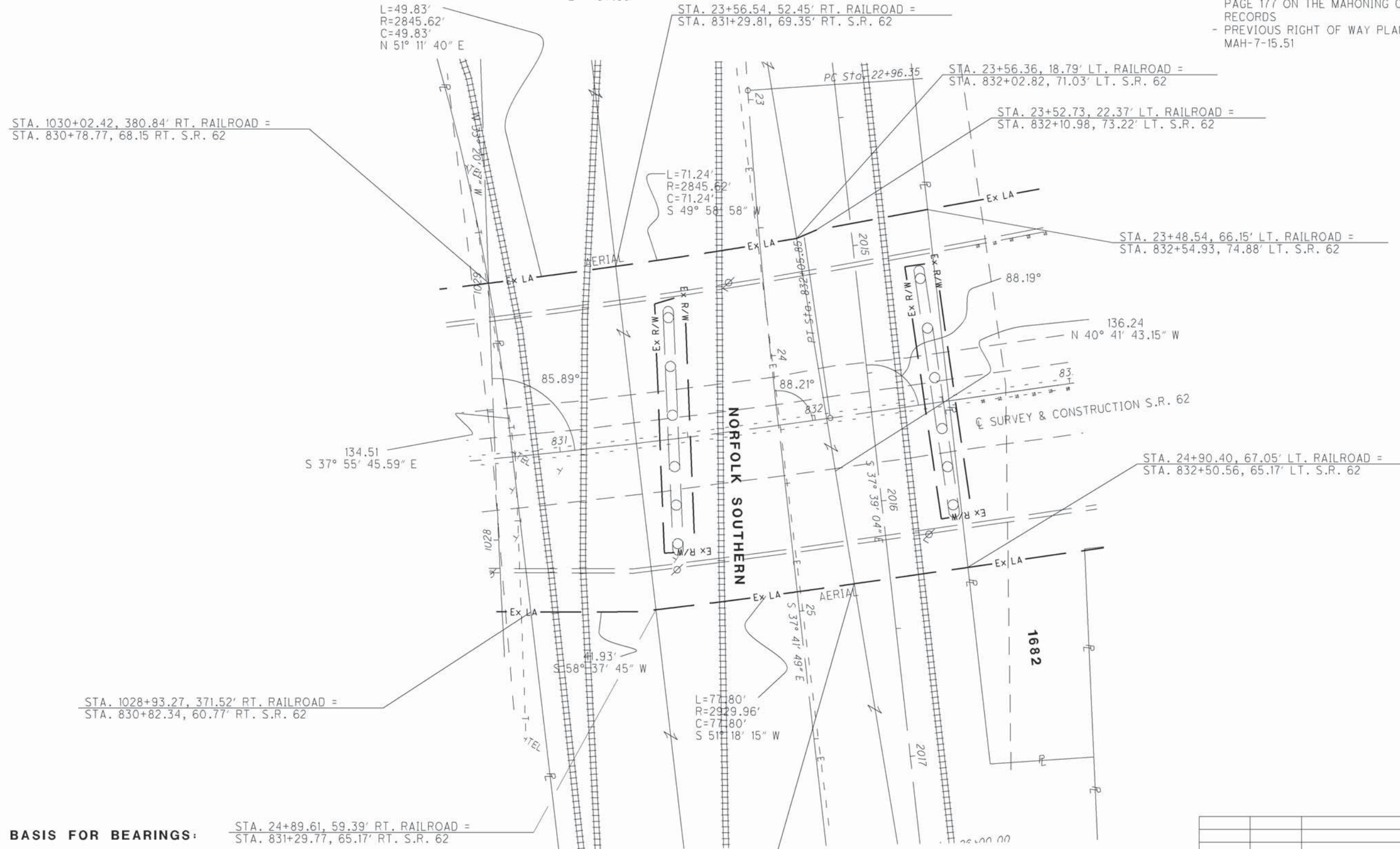
P.L.D. NO. 24073

R/R DESIGNER JPS
R/R REVIEWER WJS

NORFOLK SOUTHERN
RAILROAD PLAT

MAH-62-18.23

24/24



STA. 1030+02.42, 380.84' RT. RAILROAD =
STA. 830+78.77, 68.15 RT. S.R. 62

STA. 23+56.54, 52.45' RT. RAILROAD =
STA. 831+29.81, 69.35' RT. S.R. 62

STA. 23+56.36, 18.79' LT. RAILROAD =
STA. 832+02.82, 71.03' LT. S.R. 62

STA. 23+52.73, 22.37' LT. RAILROAD =
STA. 832+10.98, 73.22' LT. S.R. 62

STA. 23+48.54, 66.15' LT. RAILROAD =
STA. 832+54.93, 74.88' LT. S.R. 62

STA. 24+90.40, 67.05' LT. RAILROAD =
STA. 832+50.56, 65.17' LT. S.R. 62

STA. 1028+93.27, 371.52' RT. RAILROAD =
STA. 830+82.34, 60.77' RT. S.R. 62

STA. 24+89.61, 59.39' RT. RAILROAD =
STA. 831+29.77, 65.17' RT. S.R. 62

STA. 24+93.05, 18.96' LT. RAILROAD =
STA. 832+06.47, 65.17' RT. S.R. 62

BASIS FOR BEARINGS:

THE BASIS OF BEARING IS BASED UPON THE OHIO NORTH ZONE STATE PLANE COORDINATES NAD83(95) DATUM. THE BEARINGS SHOWN ARE FOR PROJECT USE ONLY.

REV. BY	DATE	DESCRIPTION
DATE COMPLETED:		

DATE: 27-APR-12 10:40
FILE: J:\JOB\60466-MAH-62-18-23\PLAN_SHEETS\24-RIGHT_OF_WAY\06-RR_PLATS\24073RR002.DGN
SCALE: 1" = 20'