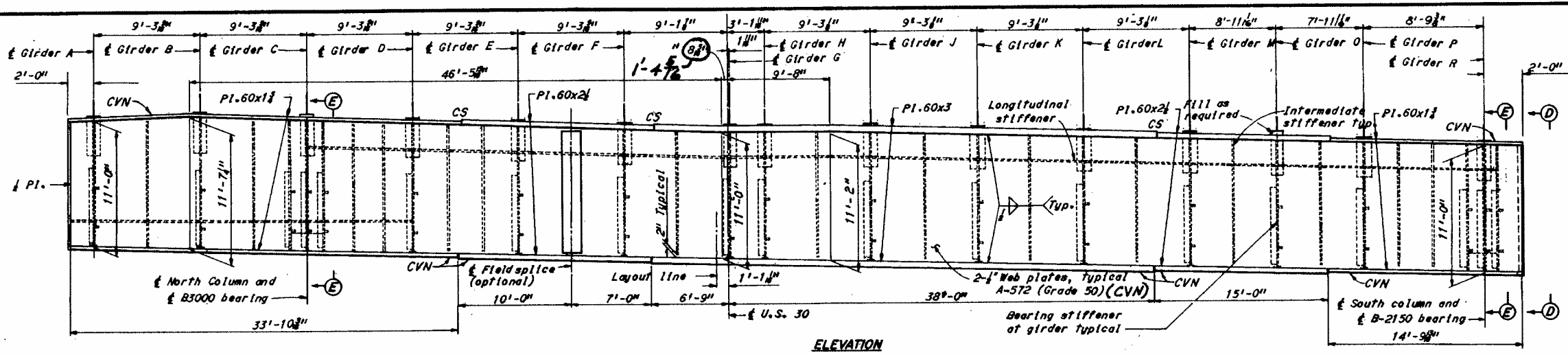
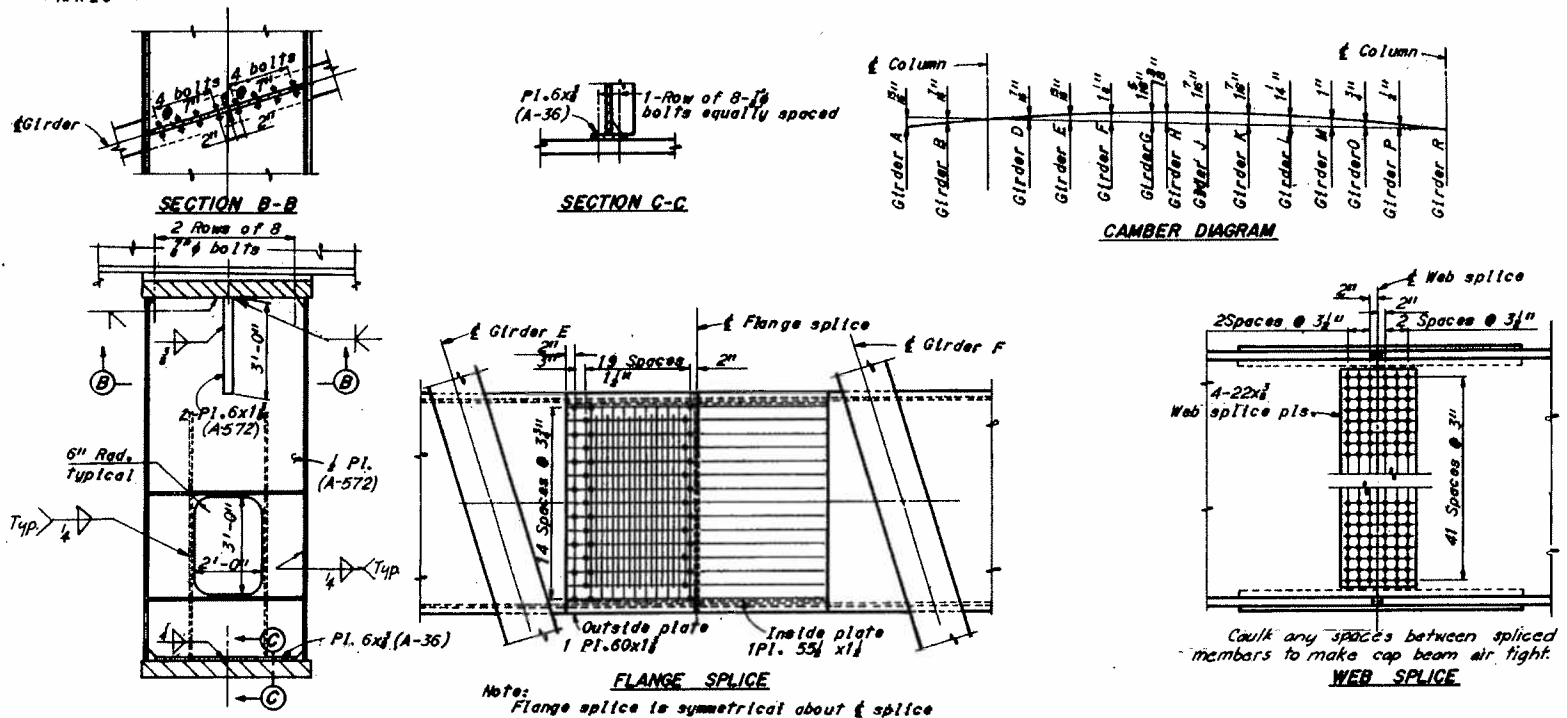


FED. ROAD DIST. NO.	STATE	FEDERAL AID PROJECT NO.	TYPE FUNDS	213 299
2	OHIO			

STARK COUNTY
STA-30-15.04
STA-77-9.22



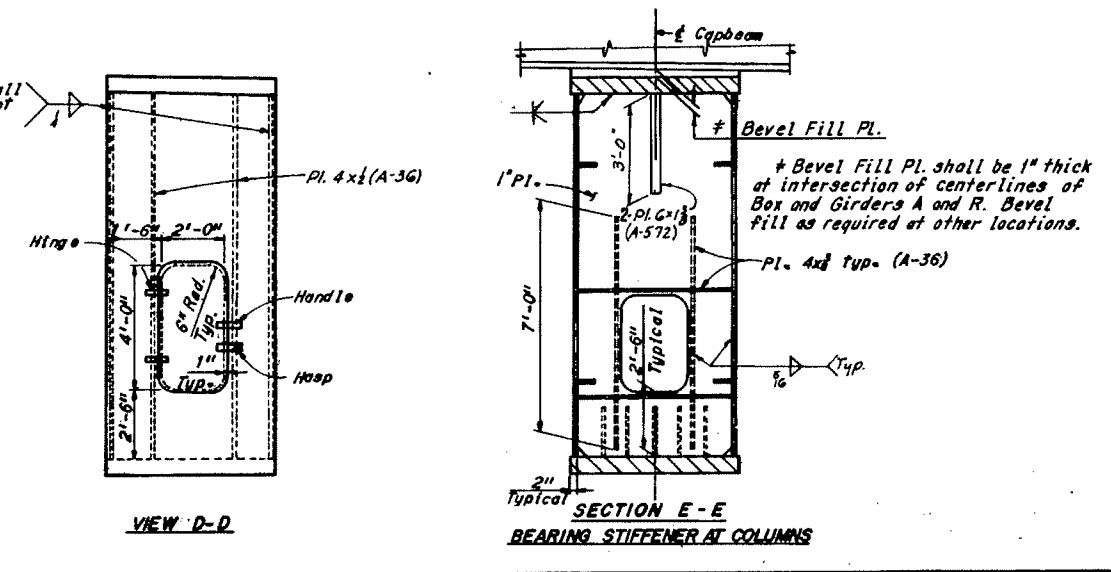
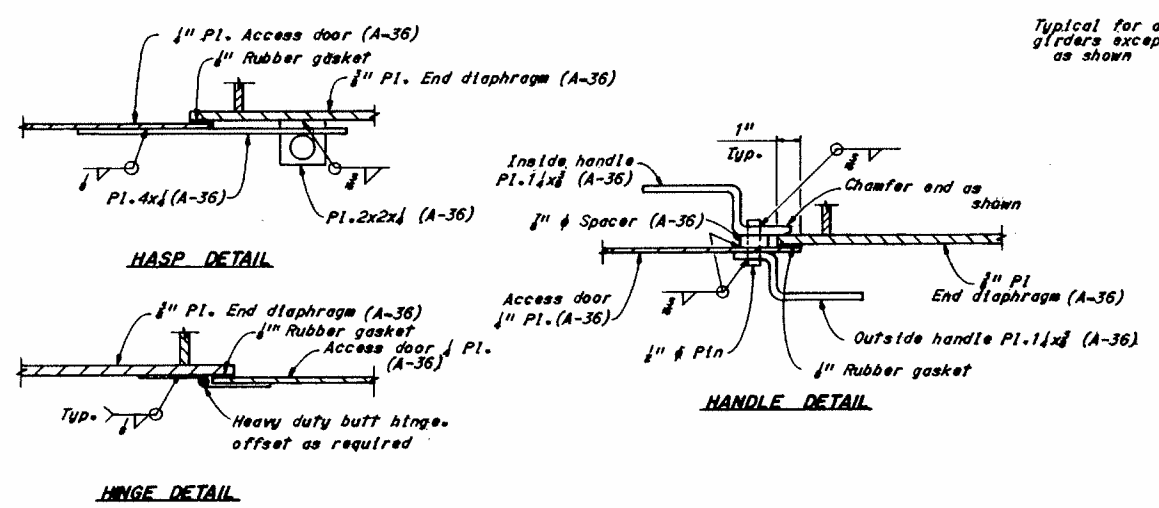
MICROFILMED
APR 16 1985



Notes:

- For bearing details see Sheet 10/20
- For column and footing details see Sheet 8/20
- For longitudinal girder details see Sheet 13/20
- Transverse intermediate stiffeners shall be plates 10x3 (A-36) welded on each web and spaced as shown in elevation. Use 1/4" fillet welds.
- Longitudinal stiffeners shall be plates 6x3 (A-36) welded on inside face of webs only and placed a distance of 1/3 depth of web from top or bottom of web plate. Use 1/4" fillet welds. They shall terminate 1/4" from diaphragms and from transverse intermediate stiffeners, and have clipped corners to clear welds.
- Web depths as shown are given at the centerline of cap beam.
- All bolts shall be A-325 bolts.
- Bolts used in the flange and web field splices shall be 1" diameter bolts.
- All steel shall be A-588 unless shown otherwise.
- Intermediate stiffeners shall be equally spaced between bearing stiffeners.
- CVN See sheet 200.
- CS Indicates flange butt weld subject to compressive stress only.
- Painting of Cap Beam: The interior of the cap beam shall receive one coat of primer. No field painting of the interior is required. Painting of the exterior shall be as per SS 846.

BEARING STIFFENER AT GIRDERS



All splice plates, except fill plates, shall be (CVN).

H.N.T.S. BRIDGE NO. 3
HOWARD, NICKLES, TAMMAM & BERGENDORF
CONSULTING ENGINEERS
KANSAS CITY CLEVELAND NEW YORK

Revised 3-4-76 By C.K.B.
9/20

PIER 2 CAP BEAM

U.S. 30 AND RAMP B OVER
CLEVELAND AVE. AND B. & O. R.R.

BR. NO. STA-30-15.07 STA. 970+58.36
SCALE: NONE STA. 975+58.49

RELOCATED U.S. 30

CANTON STARK COUNTY OHIO

Revised 3-1-78

DRAWN BY	TRACED	CHECKED BY	REVIEWED BY	DESIGNED BY
DATE 7-8-77	DATE 9-15-77	DATE 11-24-77	DATE 1-9-78	1648