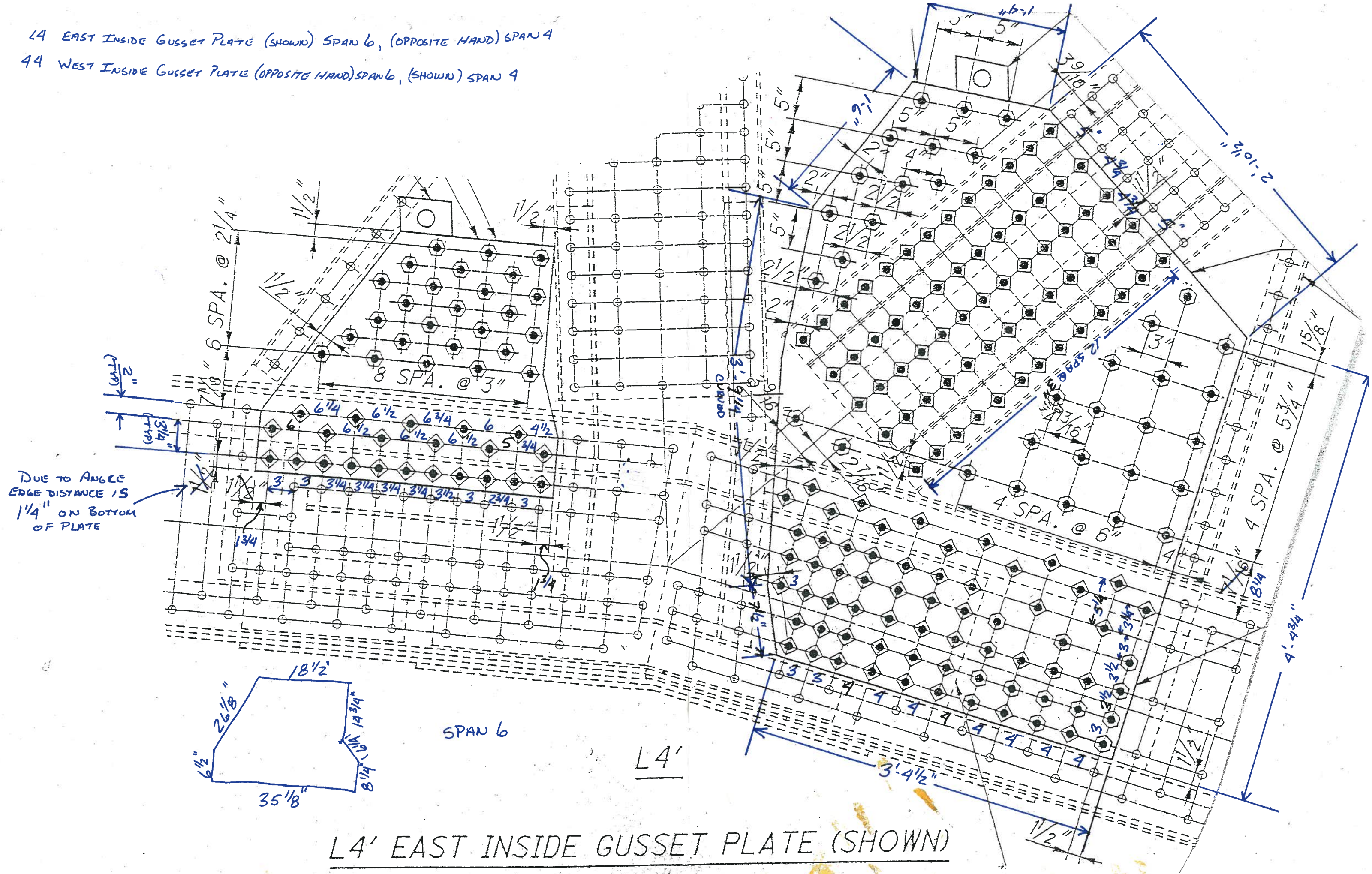


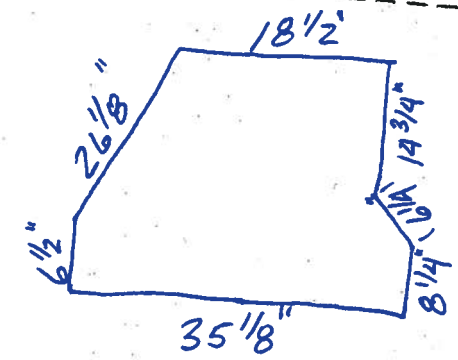
L4 EAST OUTSIDE GUSSET PLATE (SHOWN) SPAN 6, (OPPOSITE HAND) SPAN 4
 L4 WEST OUTSIDE GUSSET PLATE (OPPOSITE HAND) SPAN 6, (SHOWN) SPAN 4

L4

L4 EAST INSIDE GUSSET PLATE (SHOWN) SPAN 6, (OPPOSITE HAND) SPAN 4
 44 WEST INSIDE GUSSET PLATE (OPPOSITE HAND) SPAN 6, (SHOWN) SPAN 4

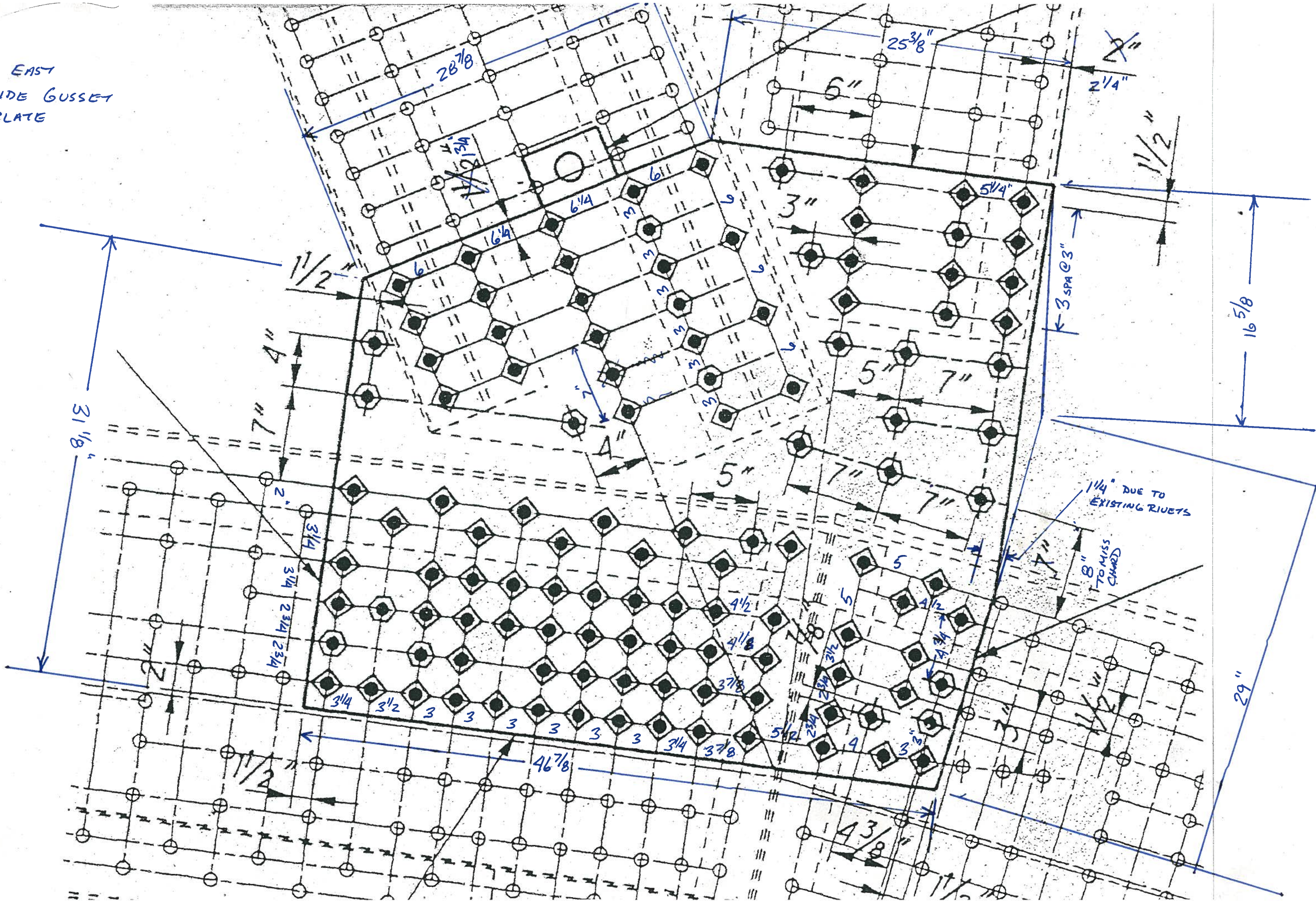


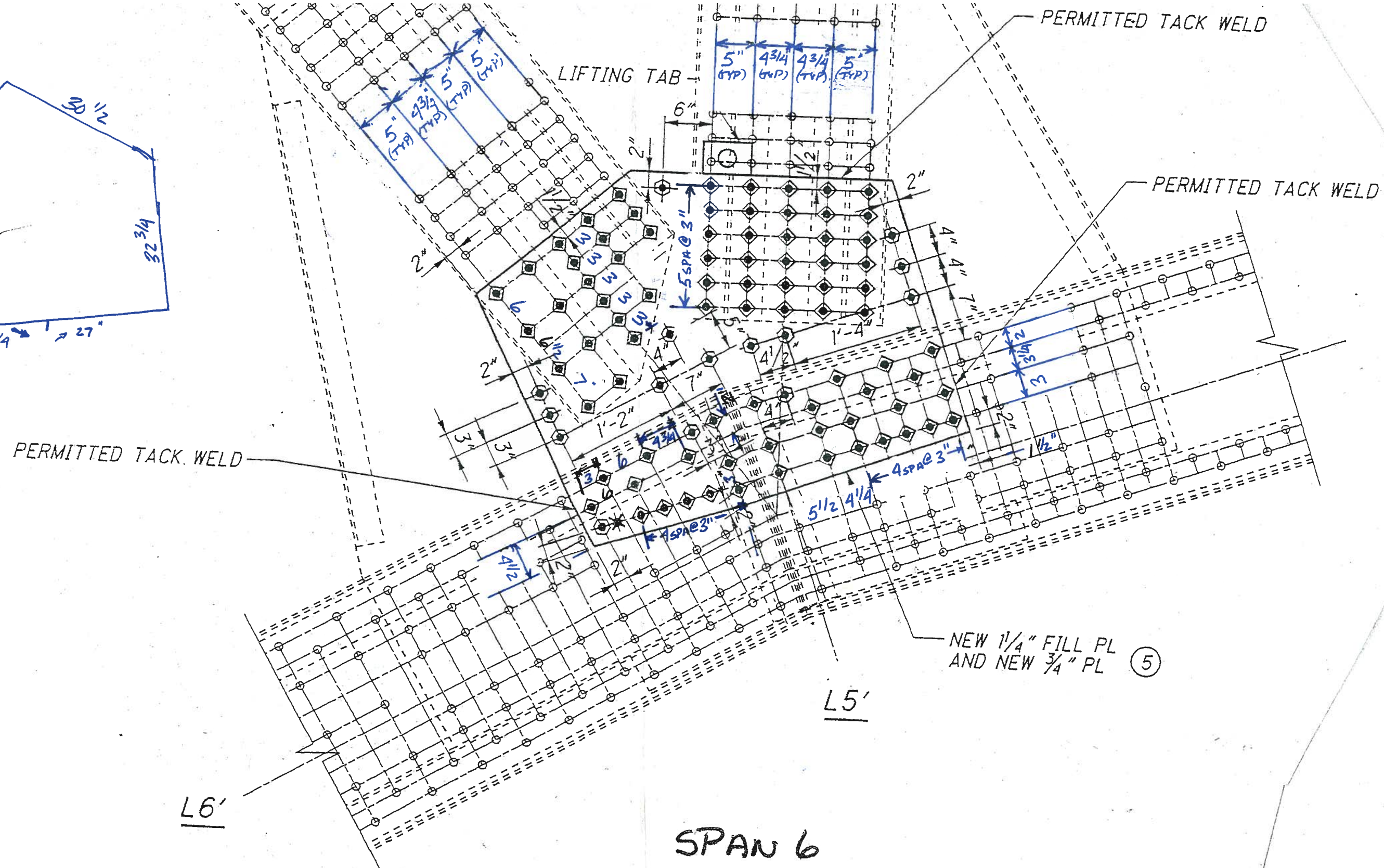
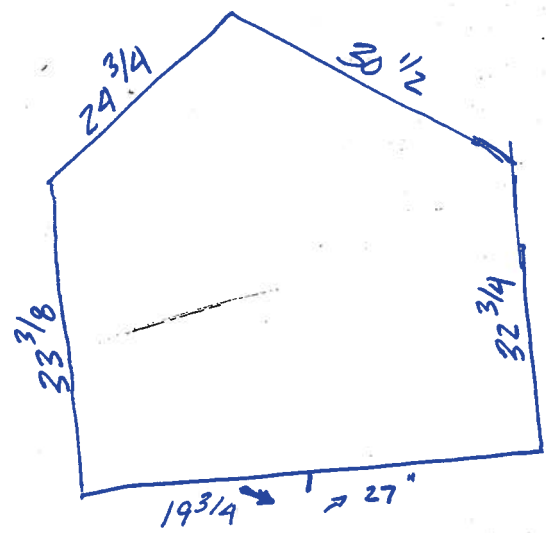
DUE TO ANGLE
 EDGE DISTANCE IS
 1/4" ON BOTTOM
 OF PLATE



L4' EAST INSIDE GUSSET PLATE (SHOWN)

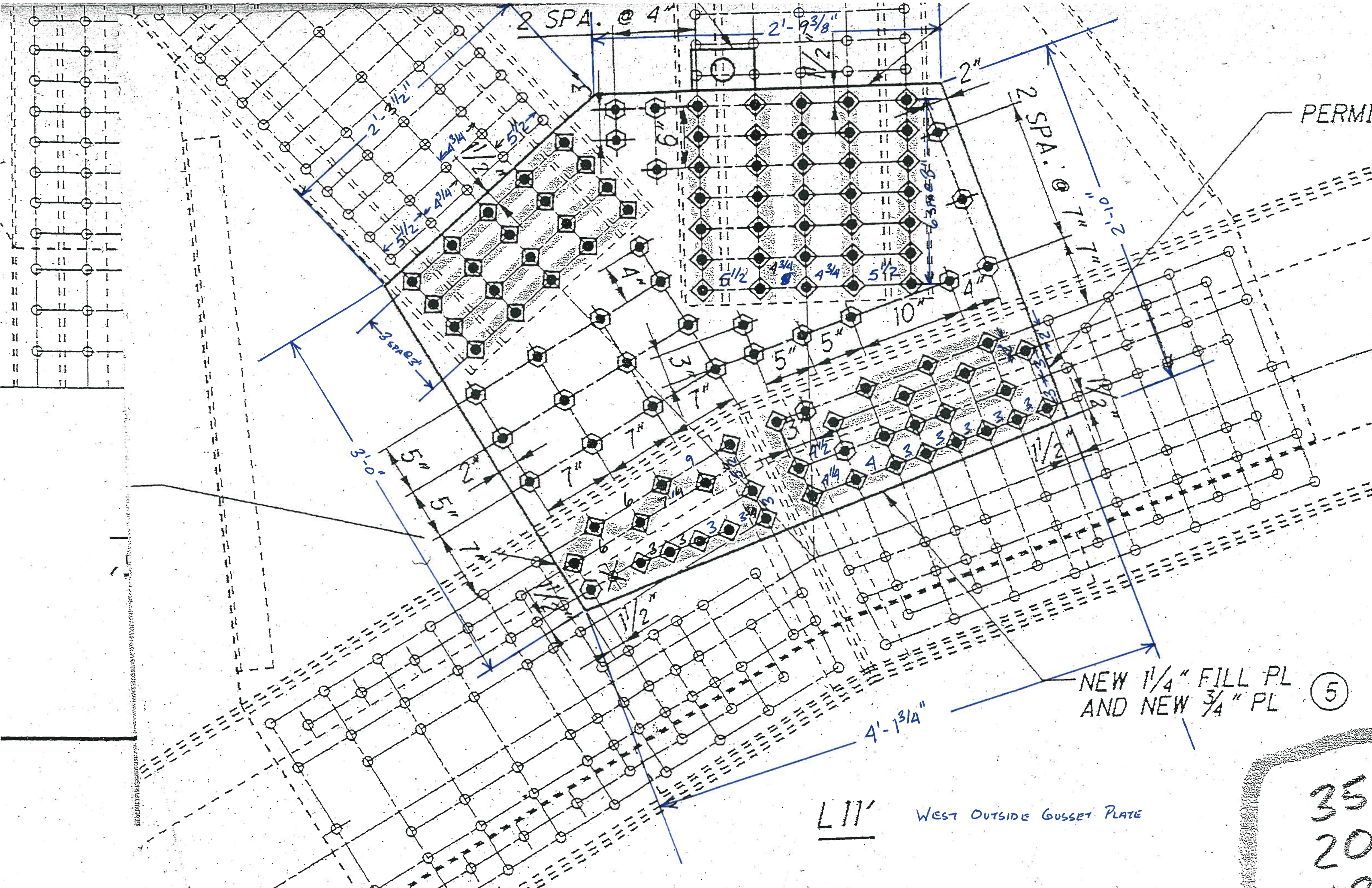
L6 EAST
OUTSIDE GUSSET
PLATE





SPAN 6
L5' EAST OUTSIDE GUSSET PLATE

L4'



PERMI

NEW 1/4" FILL PL
AND NEW 3/4" PL

5

LIII WEST OUTSIDE GUSSET PLATE

35
20