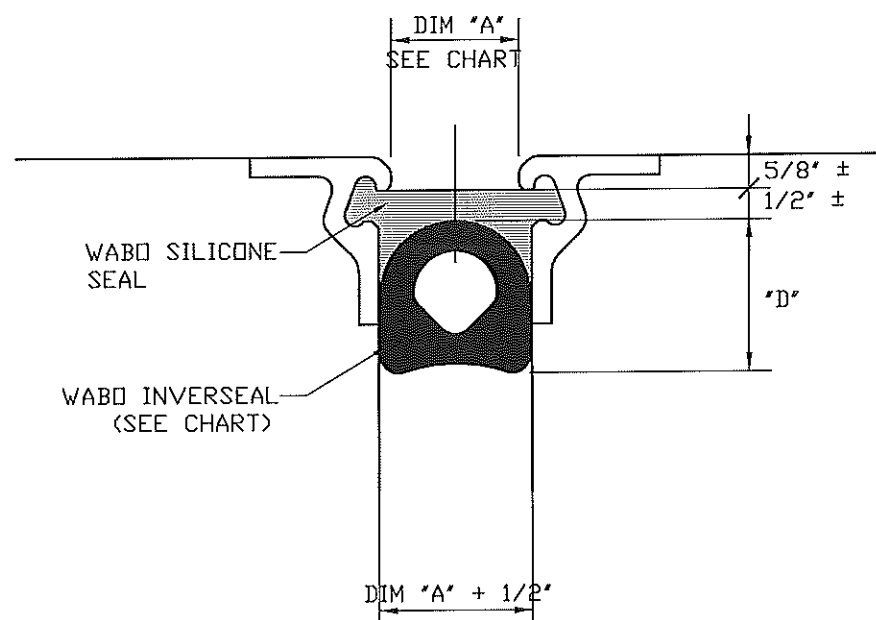


TYPICAL SECTION AT MODULAR JOINT



TYPICAL SECTION AT EXPANSION JOINT

LOCATION	DIM "A" @ 60°	WABO INVERSEAL	DIM "D"
SOUTH ABUTMENT	3.0' ±	IV-400	4'
PIER 3	2.75' ±	IV-400	4'
CONTRACTION JOINT 1	2.5' ±	IV-300	3'
CONTRACTION JOINT 2	2.38' ±	IV-300	3'
CONTRACTION JOINT 3	2.25' ±	IV-300	3'
CONTRACTION JOINT 4	2.13' ±	IV-250	2 1/2'
CONTRACTION JOINT 5	2.00' ±	IV-250	2 1/2'
NORTH ABUTMENT	1.75' ±	IV-250	2 1/2'

STATE: OHIO  
 COUNTY: SUMMIT  
 PROJECT NO.: SUM-8-1.99

C:\Engineer\DRAWING\Wabob4.dwg - 6/21/2010 1:03:37 PM

DRAWING ACTION:				DETAILED BY: JFW	DATE: 6-21-10
	<small>Information provided herein, including but not limited to, any drawing, design, photograph, graphic, or statement(s) ("Materials") are proprietary and the property of Watson Bowman Acme Corporation ("Company"). Reproduction, translation, or reduction to any electronic, medium or machine readable form, in whole or part, is strictly prohibited, except for the express purpose for which it has been furnished, without prior written consent of Company. All Materials contained herein are provided by Company for information purposes only. Company reserves the right to amend or withdraw any information contained in the Materials without notice. All technical or other advice by Company, whether verbal or written, concerning products, or the use of products in specific situations ("Advice") is given by Company and is used at the Users own risk.</small>	<small>WATSON BOWMAN ACME CORPORATION          95 PINEVEEN DRIVE AMHERST, N.Y. 14228 TEL. (716) 891-7555 FAX (716) 891-9239</small>	CHECKED BY: KF	DATE: 6-21-10	
		PROJECT: JOINT PROPOSAL BRIDGE NO. SUM-8-0199 OVER RAILROADS LITTLE CUYAHOGA RIVER AND EAST NORTH STREET	SCALE: NTS	WBA JOB NO.: -----	DRAWING NO.: SKETCH
			SHEET NO.: 1 OF 1		