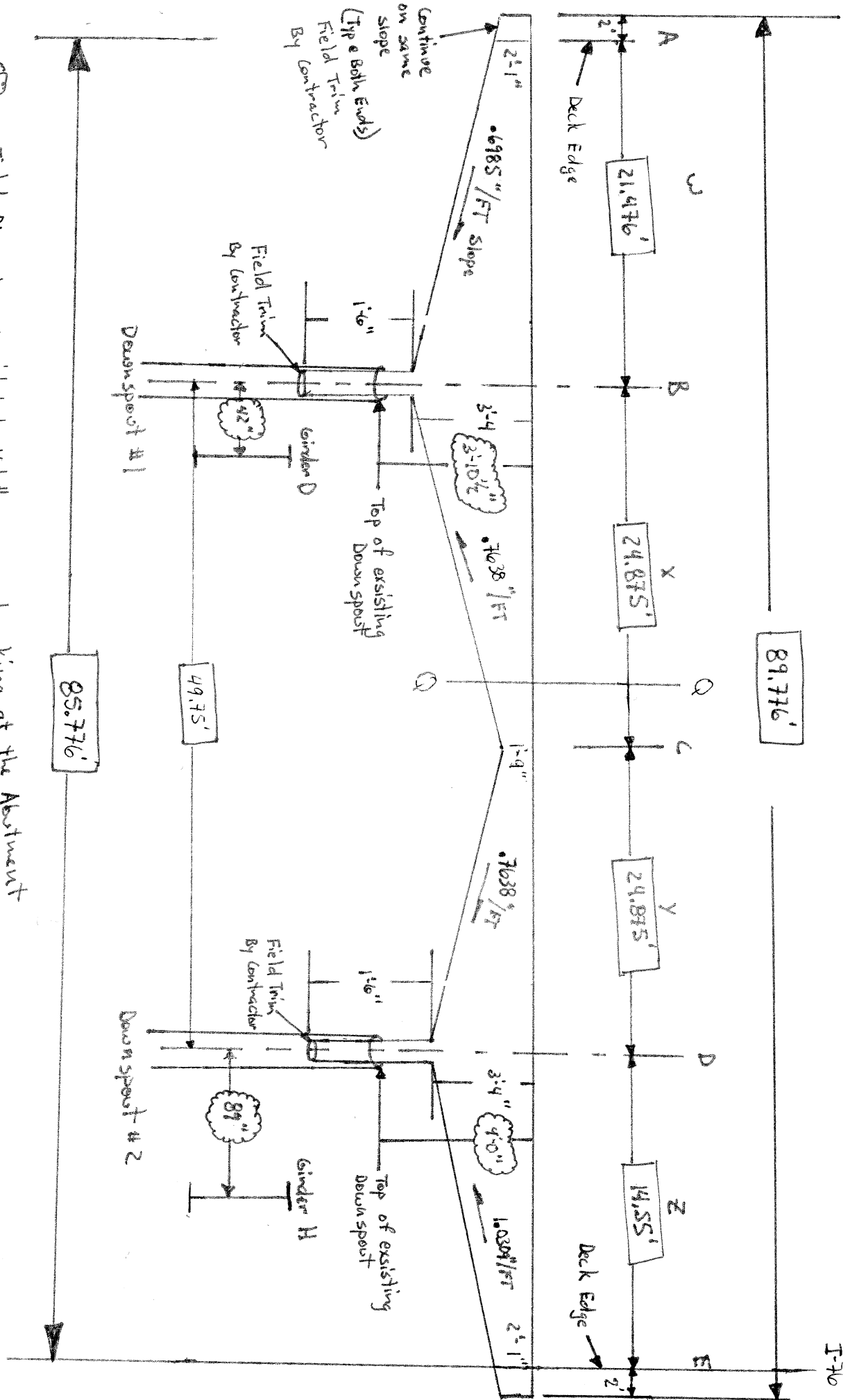


Contractor: The Velloth Company
 Project: ODOT 322 (10) Summit County
 Bridge #: SDM-76-1277
 Type of work: Replacing Trough Drain on the westbound, east Abutment

Trough Drain

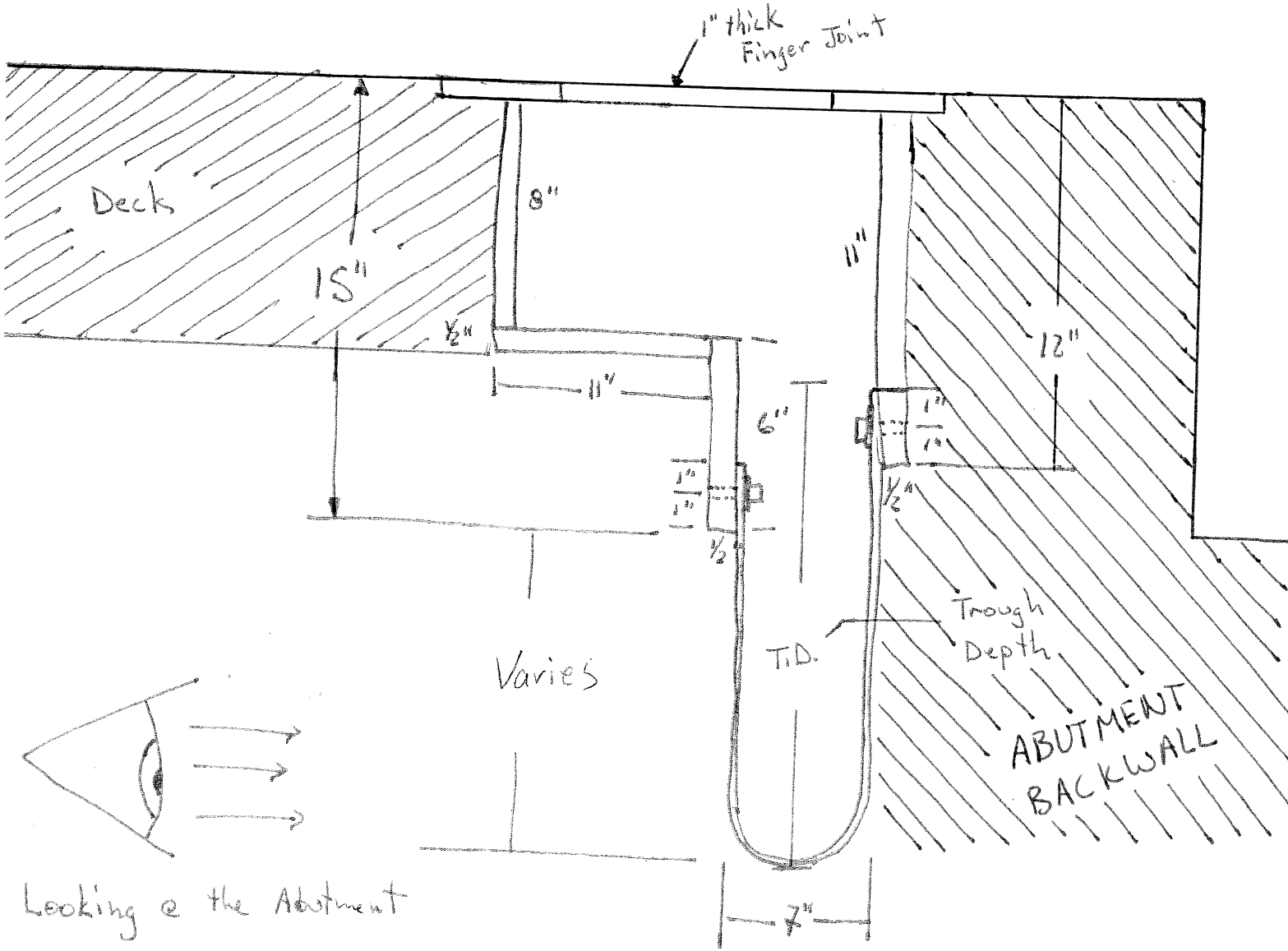


○ = Field Dimensions provided by Velloth
 □ = Calculated Dimensions based upon Existing Plan Sheets

Looking at the Abutment East Abutment (westbound)

Contractor: The Velotta Company
 Project: ODOT 322(10) Summit County
 Bridge #: SUM-76-1277
 Type of Work: Replacing Trough Drain
 on the Westbound, East Abutment

Trough Drain Typical Cross Section



Looking @ the Abutment

Section Q-Q
 (Typical)

Point	Top of Finger Joint to Bottom of Trough	Point	Neoprene Trough Depth (T.D.)
A	2'-1"	A	1'-3"
B	3'-4"	B	2'-6"
C	1'-9"	C	0'-11"
D	3'-4"	D	2'-6"
E	2'-1"	E	1'-3"