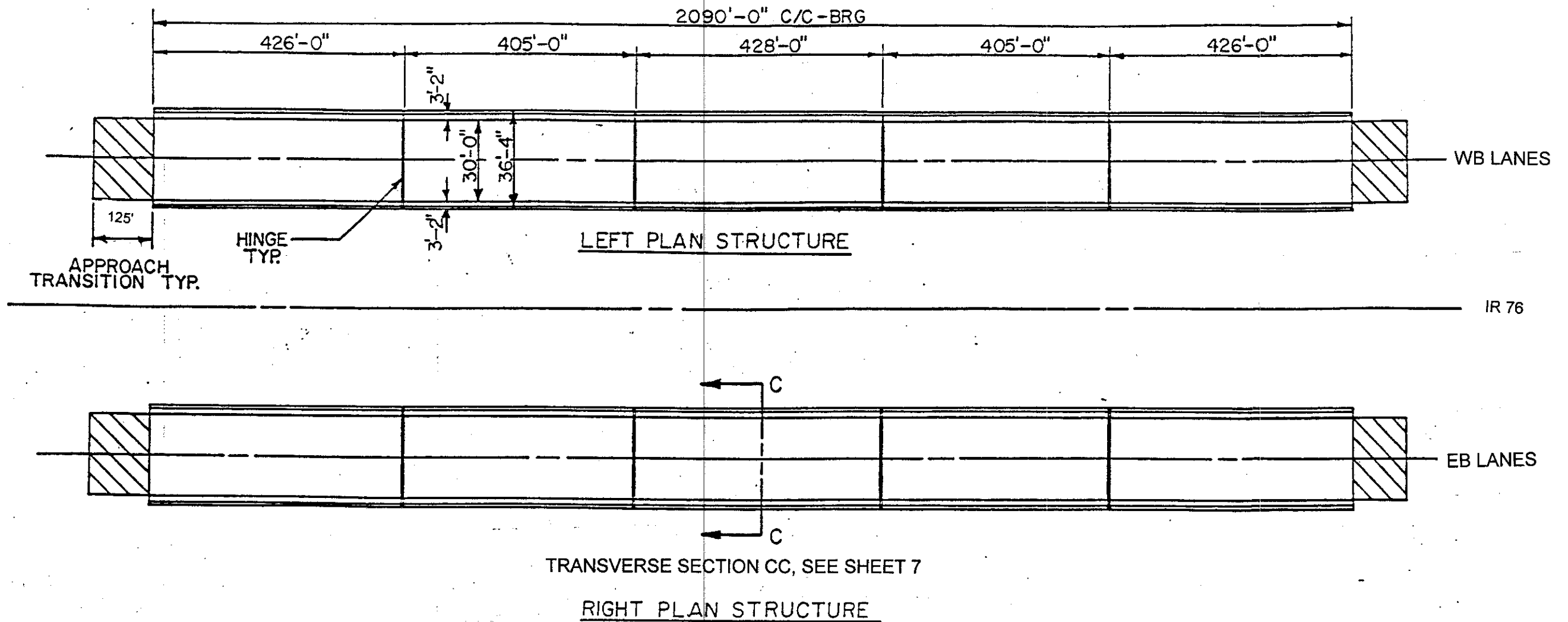


baker@D04CD123 - 1st196m.m - Tuesday February 02 1999 12:22:56 PM EST



BRIDGE DECK TREATMENT												
BRIDGE DECK DATA												
COUNTY, ROUTE AND BRIDGE NO.	LENGTH (BRIDGE LIMITS)	WIDTH CURB/ CURB	BRIDGE DECK AREA	BRIDGE DECK REPAIRS								
				202	SPECIAL	847	407	407	516	448	448	SPECIAL
				WEARING COURSE REMOVED, AS PER PLAN (2")	PATCHING CONCRETE STRUCTURE MISC. : PATCHING CONCRETE BRIDGE DECK WITH SDC	FULL DEPTH REPAIR	TACK COAT, 702.13	TACK COAT FOR INTERMEDIATE COURSE, 702.13	VERTICAL EXTENSION OF STRUCTURAL EXPANSION JOINT, AS PER PLAN	ASPHALT CONCRETE, MISC. : ASPHALT CONCRETE SURFACE COURSE, TYPE 1, AS PER PLAN	ASPHALT CONCRETE INTERMEDIATE COURSE, TYPE 1, P664-28	STRUCTURE, MISC. : PARAPET/CURB DEBRIS REMOVAL
	LIN. FT.	LIN. FT.	SO. YDS.	SO. YDS.	CU. YDS.	CU. YDS.	GAL.	GAL.	LIN. FT.	CU. YDS.	CU. YDS.	LUMP
MAH-76-0091L	2094.5	30.0	6,982	6,982	225	5	279	279	18	211	211	LUMP
MAH-76-0091R	2094.5	30.0	6,982	6,982	123	5	279	279	18	211	211	LUMP

DESIGN AGENCY

DATE

REVIEWED

DRAWN

DESIGNED

CHECKED

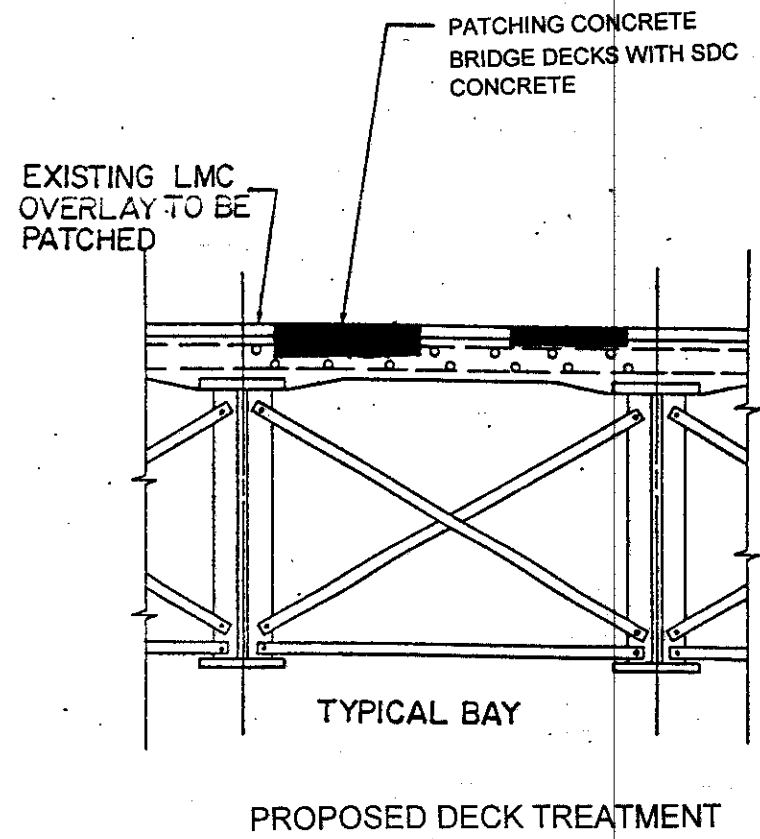
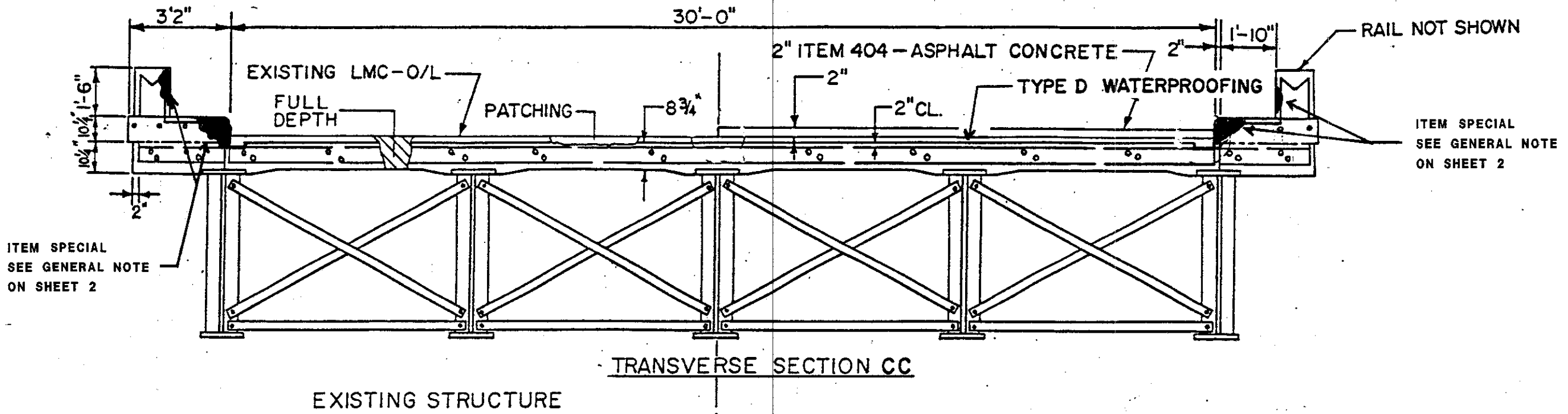
NCA

PLAN SHEET  
 BRIDGE NO. MAH-76-00.91

MAH-76-00.91

6/8

aker@D04CD123 - ts1196m.m - Tuesday February 02 1999 12:22:56 PM EST

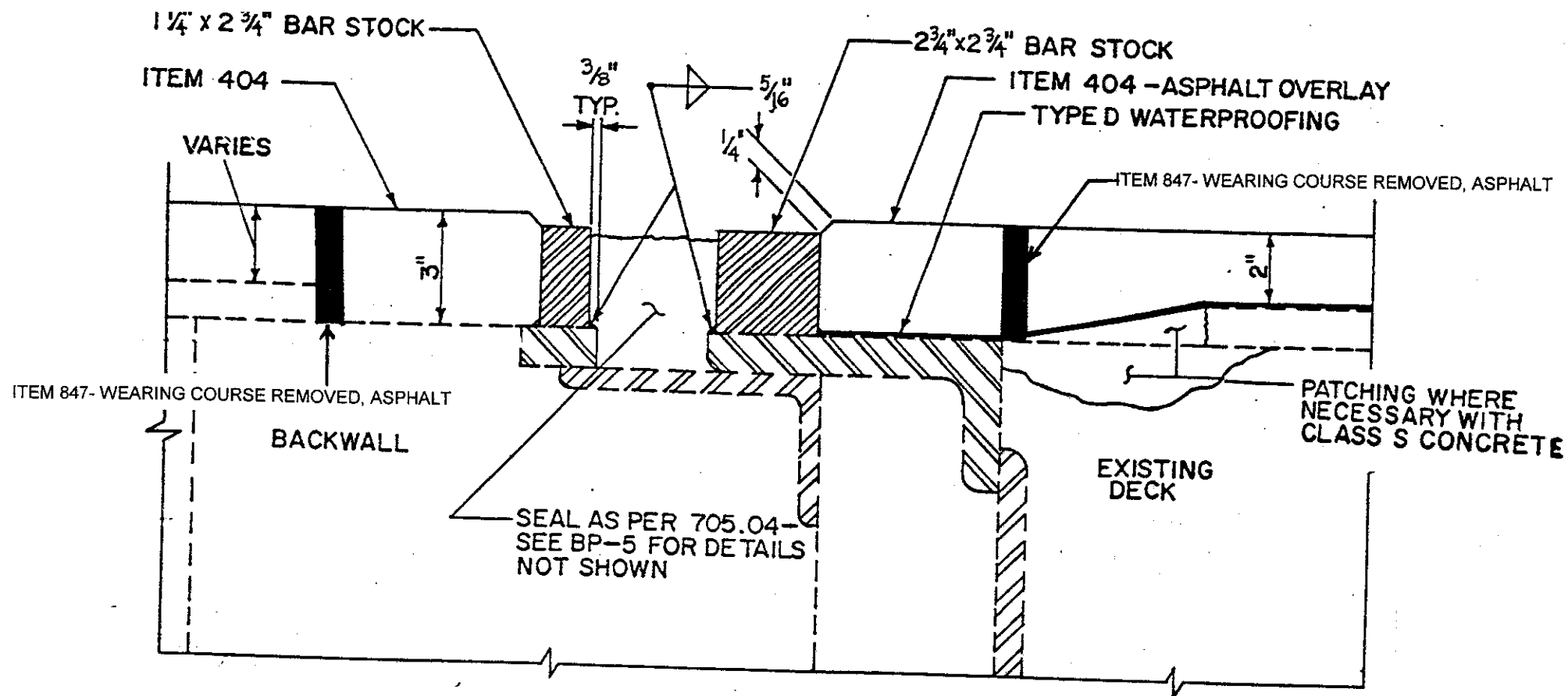


DESIGN AGENCY	DATE	REVISION	STRUCTURE FILE NUMBER
DRAWN	DATE	REVISION	STRUCTURE FILE NUMBER
DESIGNED MJD		CHECKED NCM	

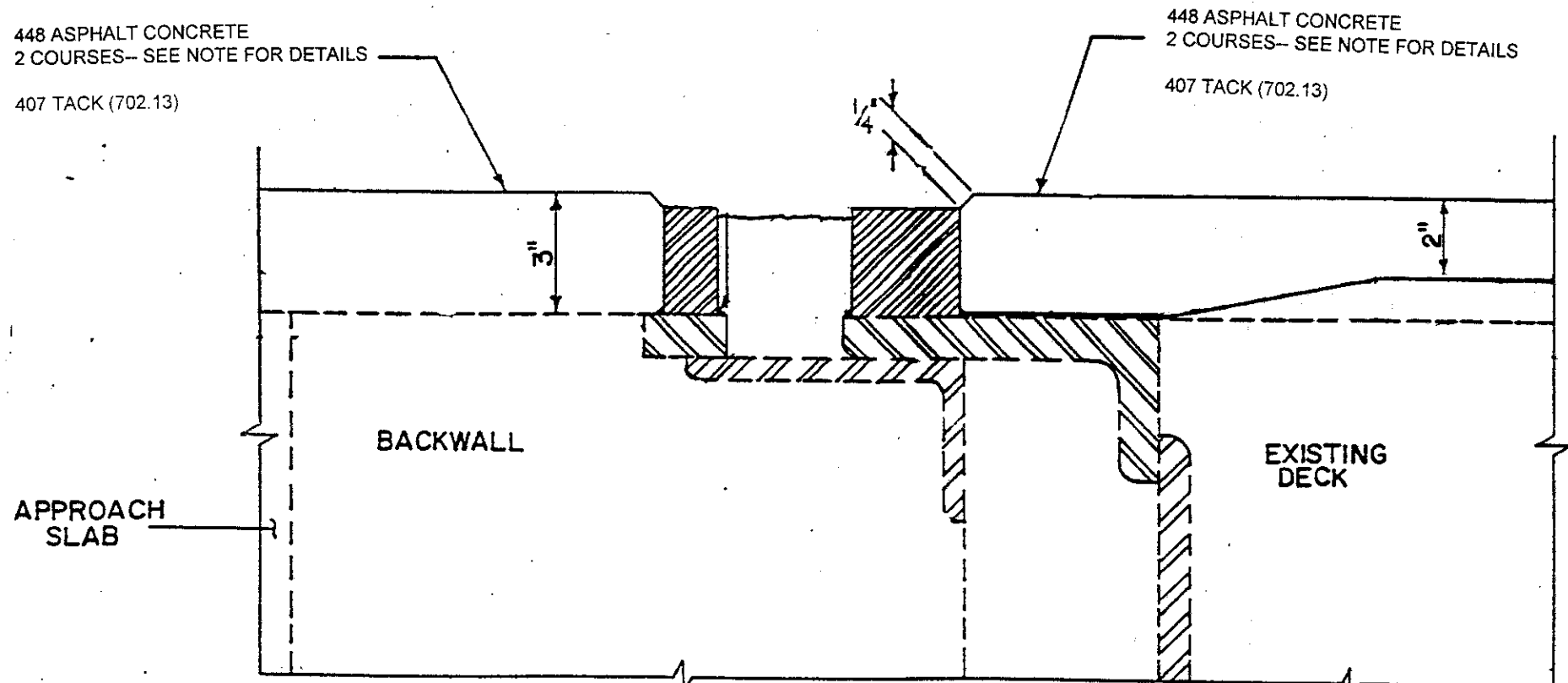
PLAN SHEET  
BRIDGE NO. MAH-76-00.91

MAH-76-00.91

aker@D04CD123 - ts1196m.m - Tuesday February 02 1999 12:22:56 PM EST



EXISTING EXPANSION JOINT (ABUTMENT)



PROPOSED EXPANSION JOINT (ABUTMENT)

**PROPOSED WORK:**

**DECK**

1. REMOVE EXISTING ASPHALT AND TYPE "D" WATERPROOFING. (2")
2. REMOVE UNSOUND CONCRETE AND PATCH WITH "SDC" CONCRETE.
3. TACK AND RESURFACE DECK WITH 448 ASPHALT CONCRETE USING THE FOLLOWING PROCEDURE:

3/4" INTERMEDIATE COURSE  
TYPE I (SCRATCH)

1 1/4" SURFACE COURSE  
TYPE I, AS PER PLAN

**APPROACHES**

1. MILL ASPHALT DOWN TO THE CONCRETE APPROACH SLAB (APPROX. 25' LONG) AND MILL 3" OF ASPHALT FOR 100' BEYOND APPROACH SLAB (INCLUDE BUTT JOINT)
2. REPAIR JOINT BY THE APPROACH SLAB
3. TACK AND RESURFACE AREA USING THE FOLLOWING PROCEDURE:

1 3/4" INTERMEDIATE COURSE  
TYPE I

1 1/4" SURFACE COURSE  
TYPE I, AS PER PLAN

4. REPLACE RPM'S, EDGE LINES AND LANE LINES ON ENTIRE PROJECT LIMITS.

DESIGN AGENT  
 DATE  
 REVIEWED  
 STRUCTURE FILE NUMBER  
 DRAWN  
 CHECKED  
 DESIGNED  
 MDD  
 NCA  
 PLAN SHEET  
 BRIDGE NO. MAH-76-00.91  
 MAH-76-00.91  
 8