

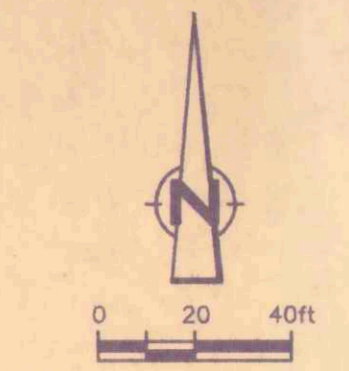
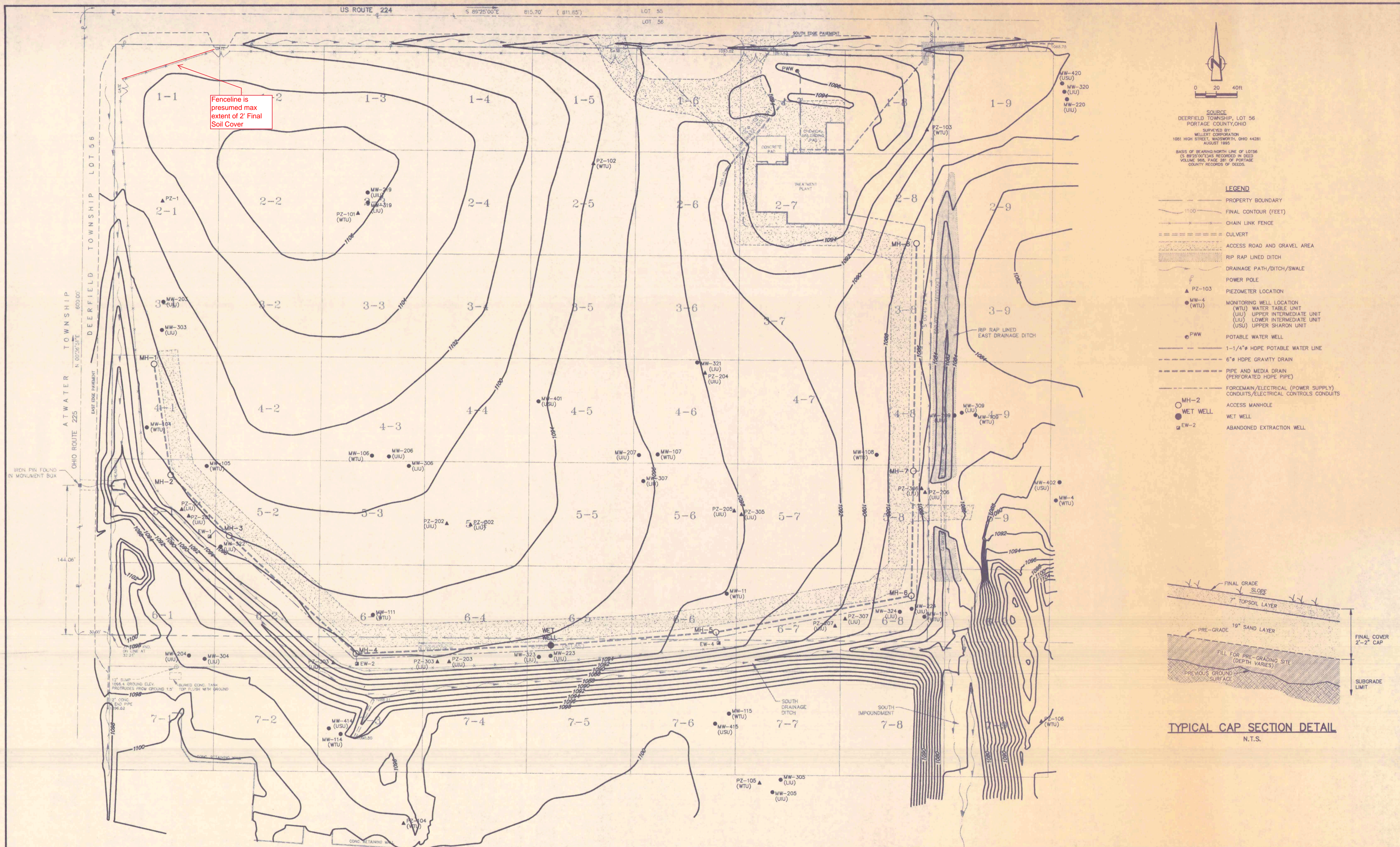
DRAWING INDEX

<u>DWG. N<sup>o</sup></u>	<u>REV. N<sup>o</sup></u>	<u>DATE</u>	<u>TITLE</u>
F-1 (P211)	0	OCTOBER 1995	PRE-CONSTRUCTION CONDITIONS (NOT INCLUDED)
F-2 (P222)	0	OCTOBER 1995	FINAL GRADING PLAN
F-3 (D-63)	0	OCTOBER 1995	TYPICAL DETAILS (NOT INCLUDED - SEE DWG. F-2)

**AS RECORDED DRAWINGS  
CONSTRUCTION OF  
SITE COVER**

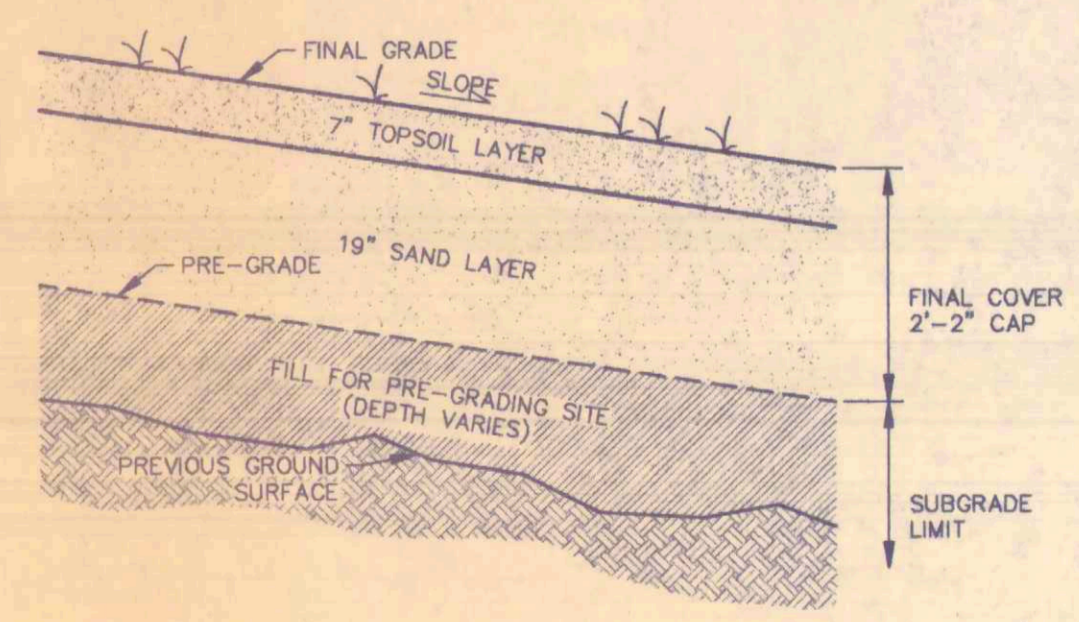
**SUMMIT NATIONAL SUPERFUND SITE  
DEERFIELD, OHIO**

Engineer: **CRA**  
CONESTOGA-ROVERS & ASSOCIATES



SOURCE  
 DEERFIELD TOWNSHIP, LOT 56  
 PORTAGE COUNTY, OHIO  
 SURVEYED BY:  
 WELLET CORPORATION  
 1001 HIGH STREET, WADSWORTH, OHIO 44281  
 AUGUST 1995  
 BASIS OF BEARING NORTH LINE OF LOTS 56  
 (& REFUSING RECORDS IN DEED  
 VOLUME 96A, PAGE 281 OF PORTAGE  
 COUNTY RECORDS OF DEEDS.

- LEGEND**
- PROPERTY BOUNDARY
  - FINAL CONTOUR (FEET)
  - CHAIN LINK FENCE
  - CULVERT
  - ACCESS ROAD AND GRAVEL AREA
  - RIP RAP LINED DITCH
  - DRAINAGE PATH/DITCH/SWALE
  - POWER POLE
  - ▲ PZ-103  
● MW-4 (WTU)  
● PWW  
— 1-1/4" HDPE POTABLE WATER LINE  
— 6" HDPE GRAVITY DRAIN  
— PIPE AND MEDIA DRAIN (PERFORATED HDPE PIPE)  
— FORCEMAIN/ELECTRICAL (POWER SUPPLY) CONDUITS/ELECTRICAL CONTROLS CONDUITS
  - MH-2  
● WET WELL  
■ EW-2
  - ABANDONED EXTRACTION WELL



**TYPICAL CAP SECTION DETAIL**  
 N.T.S.

				Approved
0	AS RECORDED	OCT 1995	SAW	
1P	Revision	Date	Initial	

**SUMMIT NATIONAL SUPERFUND SITE  
 DEERFIELD, OHIO**

CONSTRUCTION OF SITE COVER

**FINAL GRADING PLAN**

**CRA  
 CONESTOGA-ROVERS & ASSOCIATES**

Drawn by: JRV	Scale: 1"=40'	Date: OCTOBER 1995	File No: P222	Rev. No: 0
Designed by: SAW	Field book:	Project No: 2372	Drawing No: F-2	
Checked by: SAW				