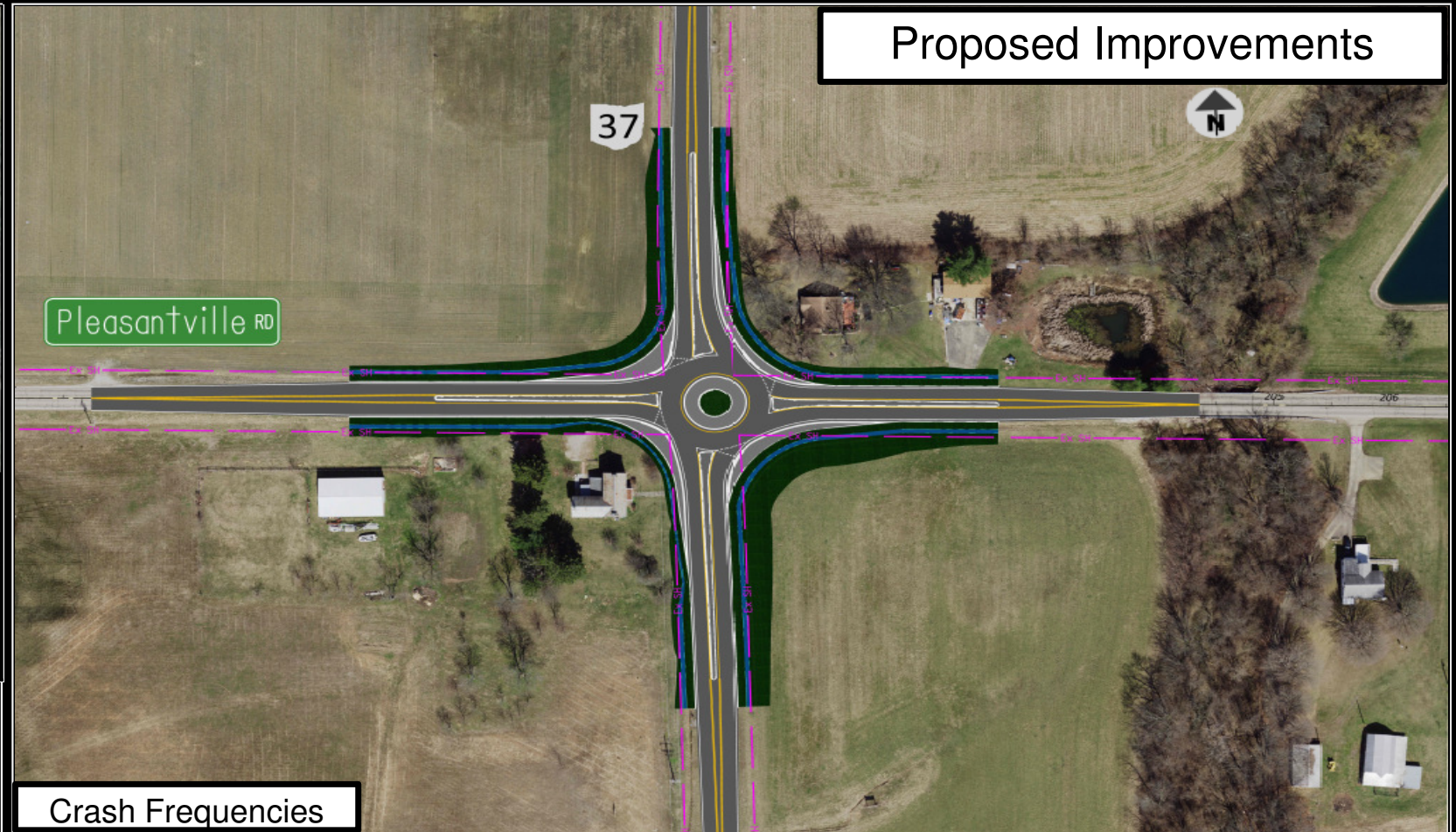
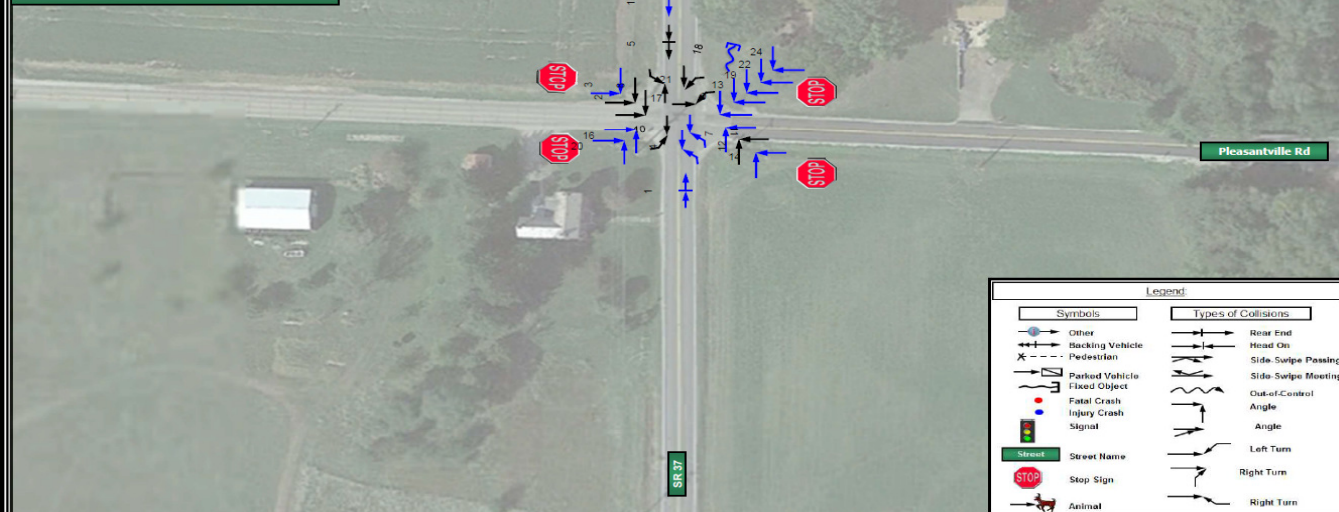


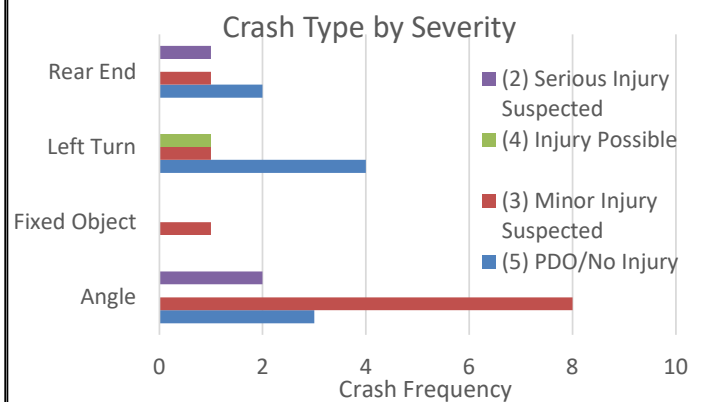
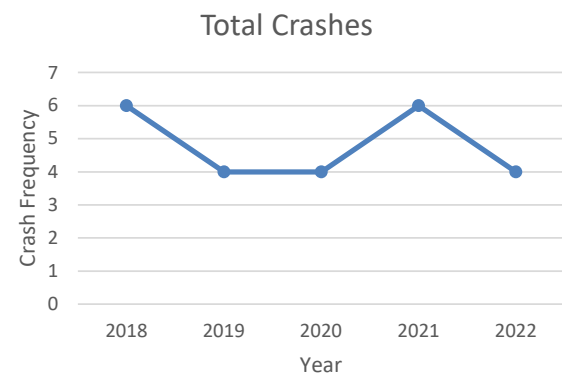
CRASH DIAGRAM

2021 HSIP #35 Rural Intersection
FAI-37 & Pleasantville Road

Crashes By Year
2018: 6
2019: 4
2020: 4
2021: 6
2022: 4



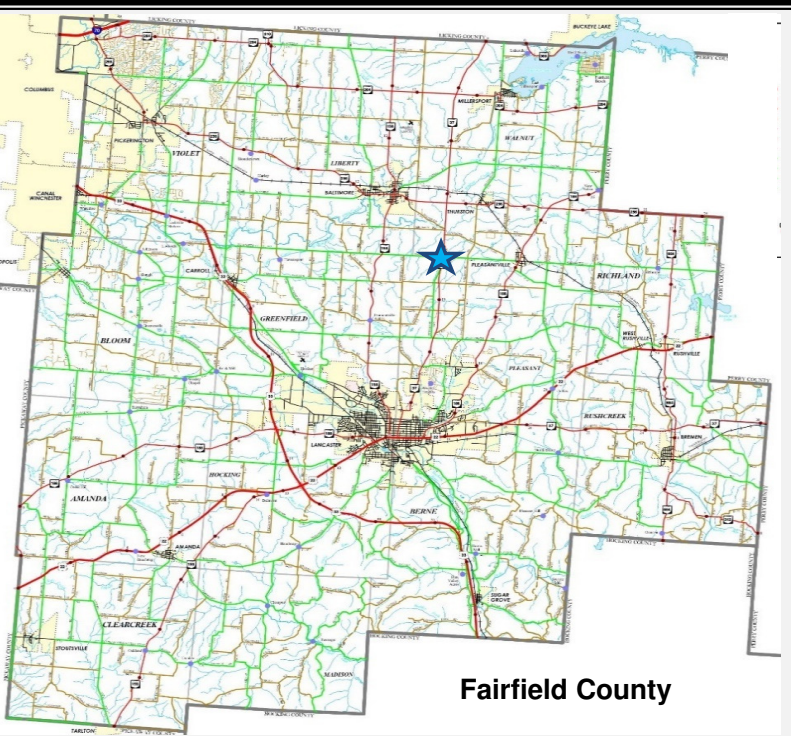
Proposed Improvements



Crash Frequencies

Project Summary Results (Without Animal Crashes)

	KA	B	C	O	Total
$N_{predicted}$ - Existing Conditions	0.3262	0.7905	0.5268	2.8297	4.4732
$N_{expected}$ - Existing Conditions	0.4023	0.9753	0.6496	2.4133	4.4405
$N_{potential\ for\ improvement}$ - Existing Conditions	0.0761	0.1848	0.1228	-0.4164	-0.0327
$N_{expected}$ - Proposed Conditions	0.0084	0.0697	0.0860	1.6368	1.8009



Safety Application Score

Application Scoring			
Category	Scoring Value	Points Awarded	Points Possible
Ratio of Observed Fatal and Serious Injuries to Observed Total Crashes	0.21	30	30
Percentage of the Potential for Safety Improvement to Total Expected Crashes	0.00%	0	20
Relative Severity Index	58,107.93	20	20
Equivalent Property Damage Only Index	6.79	20	20
Location Equity Measure	26.00%	8	10
Total		78	100

Countermeasures:

- Construct a roundabout.

Project Summary:

- Construct a roundabout.
- Right-of-way acquisition and utility relocation required.

Application Request:

Design (FY2025/2026)	\$600,000
R/W & Utilities (FY2027)	\$1,350,000
Construction (FY2029)	\$2,950,000
Total	\$4,900,000

FAI-37-8.34 Safety Improvements

Intersection of SR 37 & Pleasantville Road
2021 HSIP Safety Priority List #35 Rural Intersection
ODOT District 5

