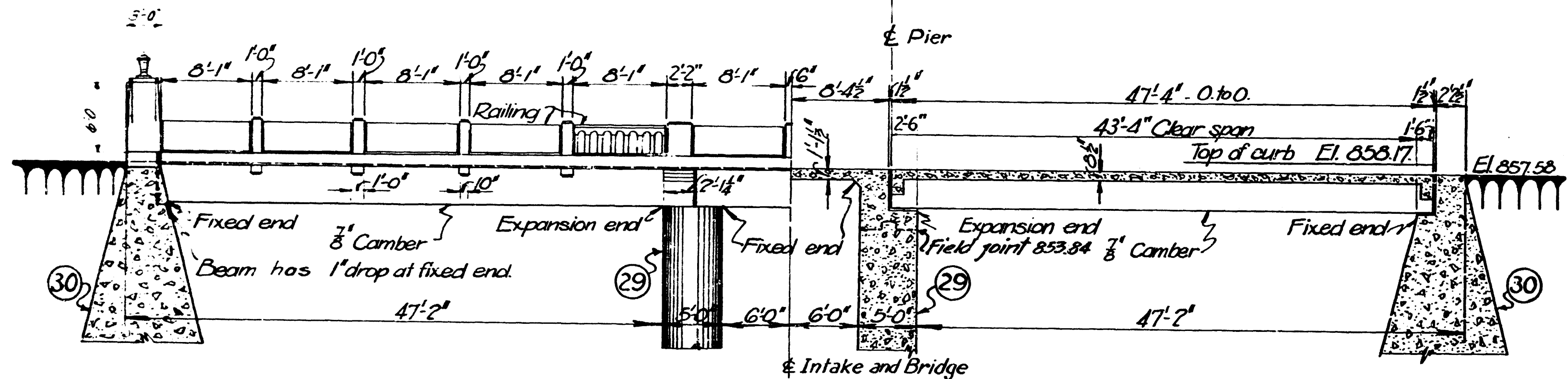


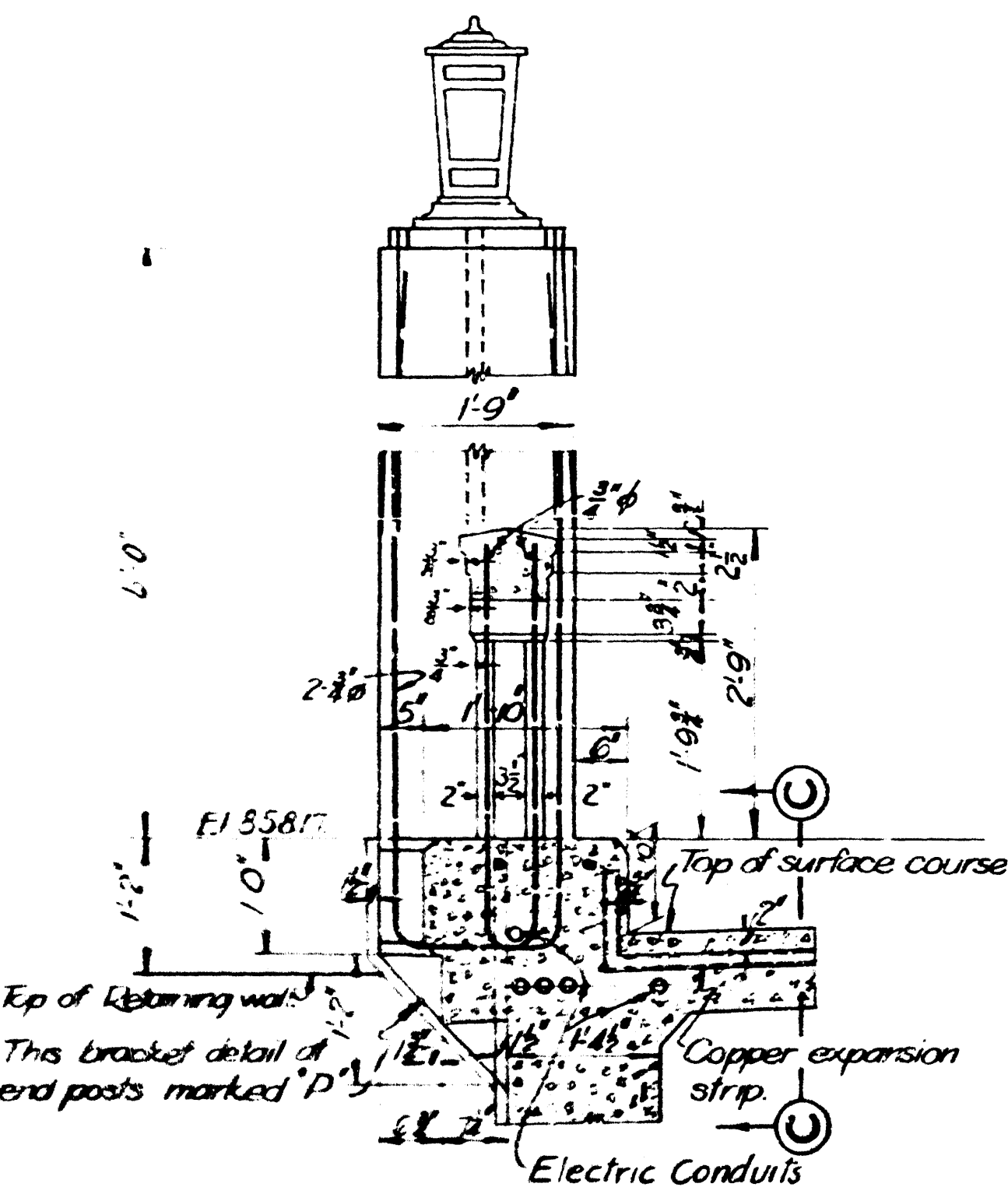
HALF PLAN-SHOWING DECK HALF PLAN-DECK REMOVED

SCALE 1/8 IN. = 1 FT.



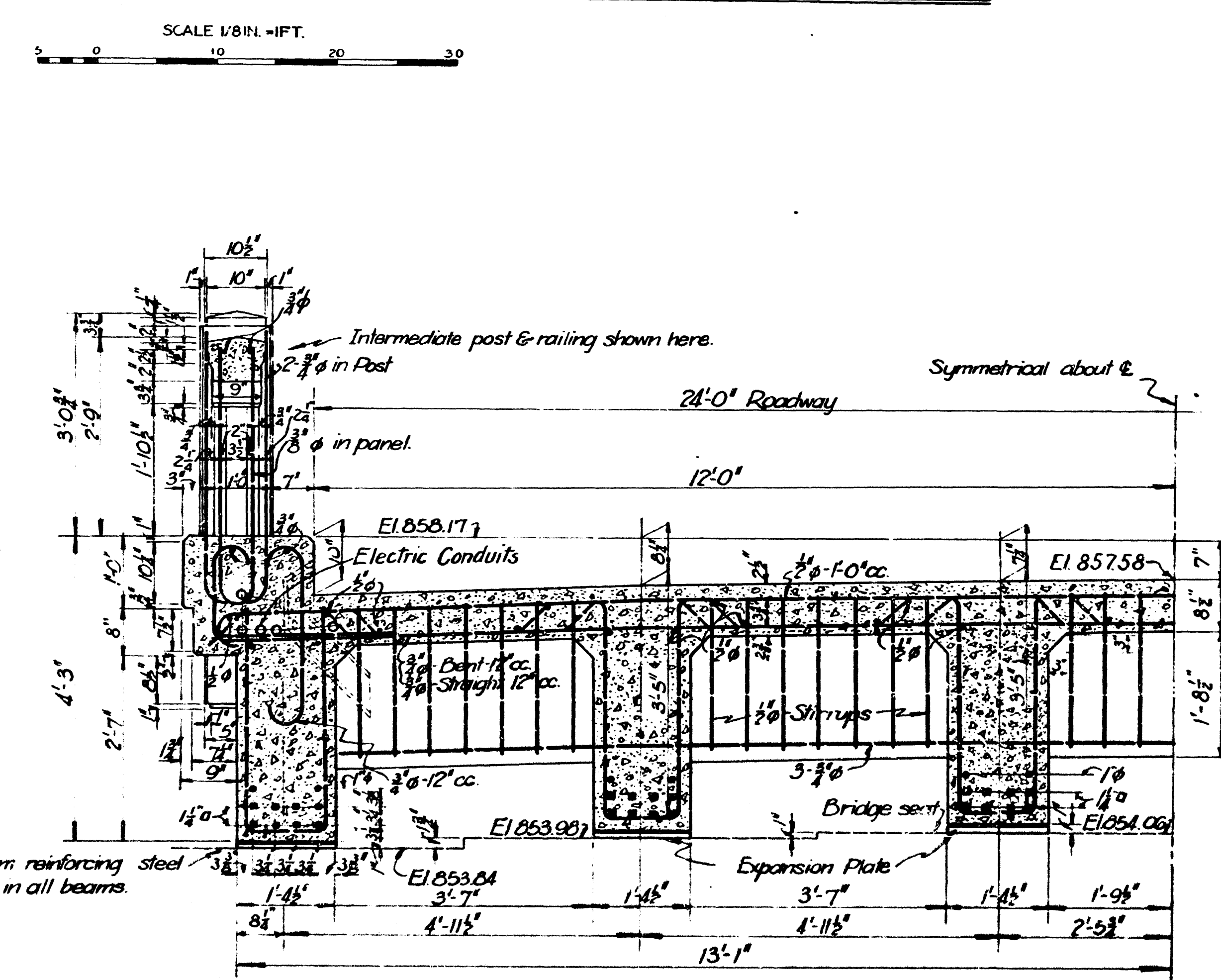
HALF ELEVATION - OUTSIDE BEAM HALF LONGITUDINAL SECTION ON CENTERLINE

SCALE 1/8 IN. = 1 FT.



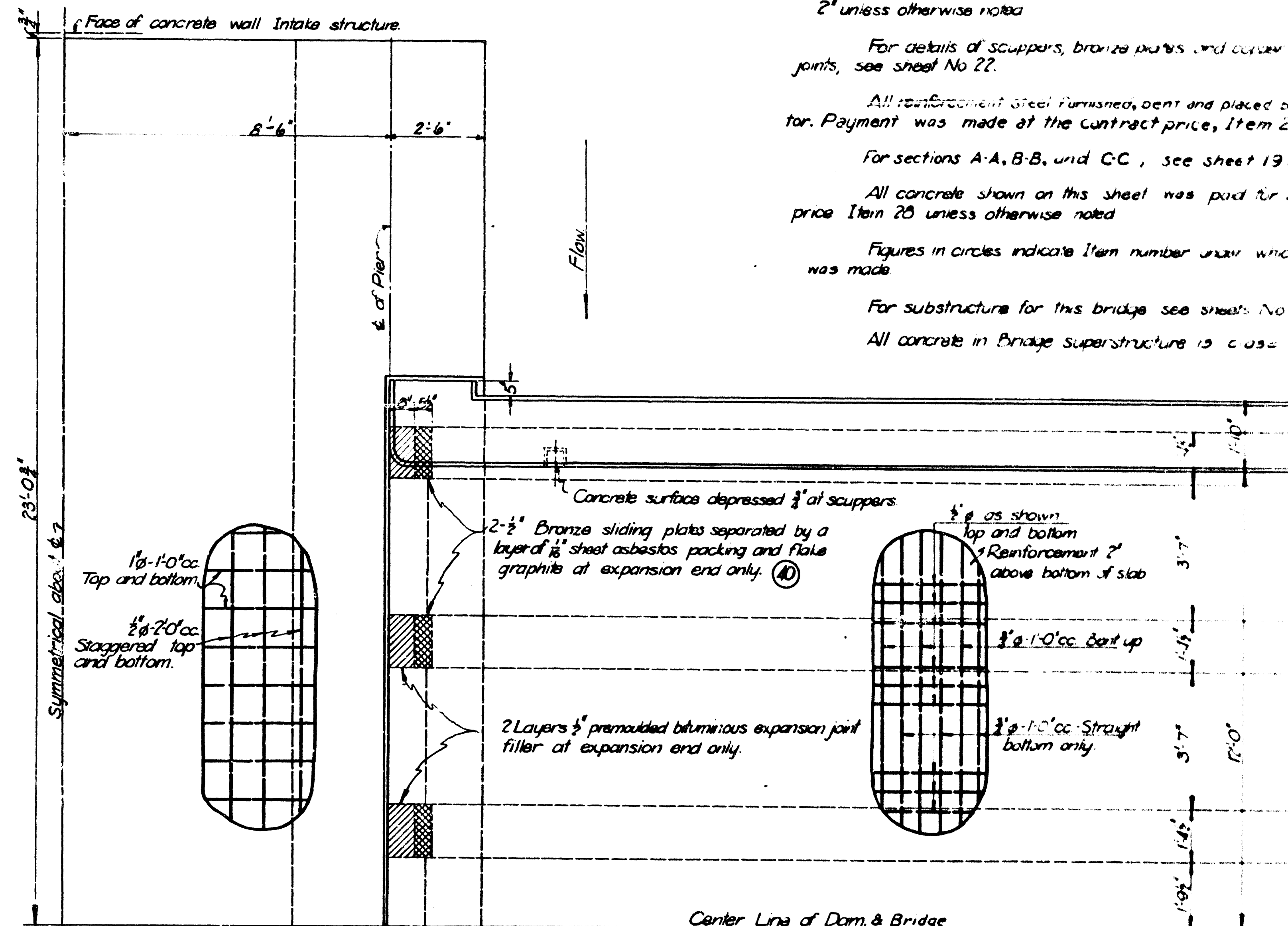
DETAIL AT END POSTS

SCALE 3/4 IN. = 1 FT.



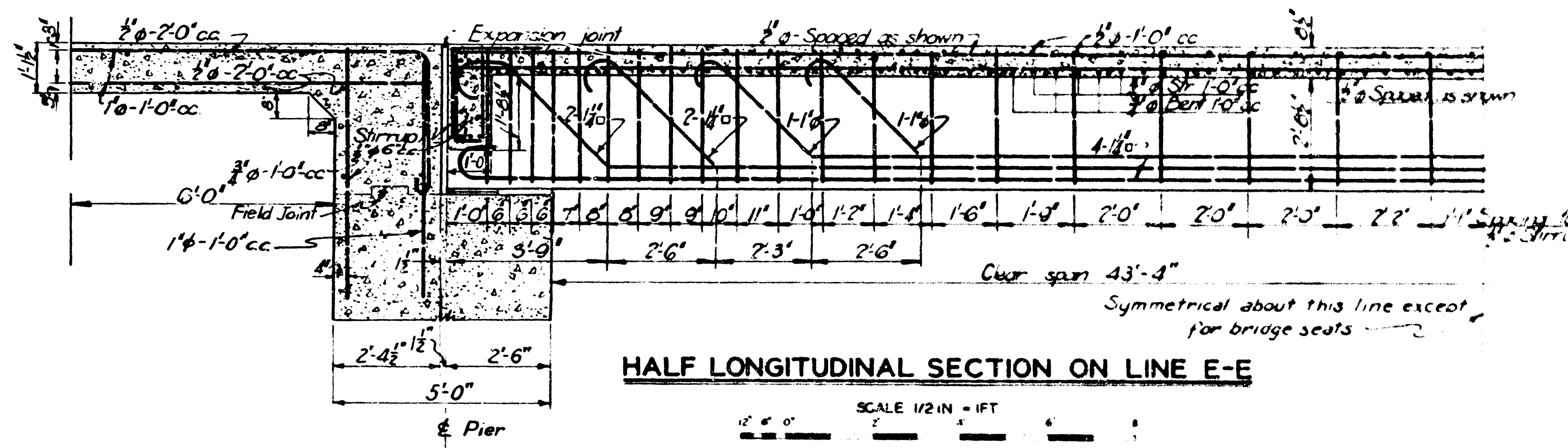
HALF CROSS SECTION - ROADWAY

SCALE 3/4 IN. = 1 FT.



QUARTER PLAN-RAILING REMOVED

SCALE 1/2 IN. = 1 FT.



HALF LONGITUDINAL SECTION ON LINE E-E

SCALE 1/2 IN. = 1 FT.

Notes:

Distance from face of concrete to reinforcement steel is 2" unless otherwise noted.

For details of scuppers, bronze plates and curves, see sheet No 22.

All reinforcement steel furnished, bent and placed by contractor. Payment was made at the contract price, Item 24.

For sections A-A, B-B, and C-C, see sheet 19.

All concrete shown on this sheet was paid for at contract price Item 20 unless otherwise noted.

Figures in circles indicate item number under which payment was made.

For substructure for this bridge see sheets No 19, 21 & 22.

All concrete in bridge superstructure is class A.

WORK AS ACTUALLY CONSTRUCTED

MUSKINGUM WATERSHED

SENECAVILLE DAM

SENECA FORK

SPILLWAY BRIDGE NO. 1

SHEET 16 OF 27 SHEETS SCALE AS SHOWN

DATE	REVISION	REV BY	CHK BY	APP BY
6-22-33	Minor revisions			

U. S. ENGINEER OFFICE, ZANESVILLE, O. JAN 1935

SUBMITTED: APPROVAL RECOMMENDED: APPROVED:

DESIGNED: ENGINEER: TR BY LHP JEA TO ACCOMPANY SPECIFICATIONS