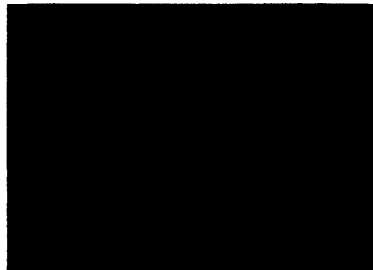
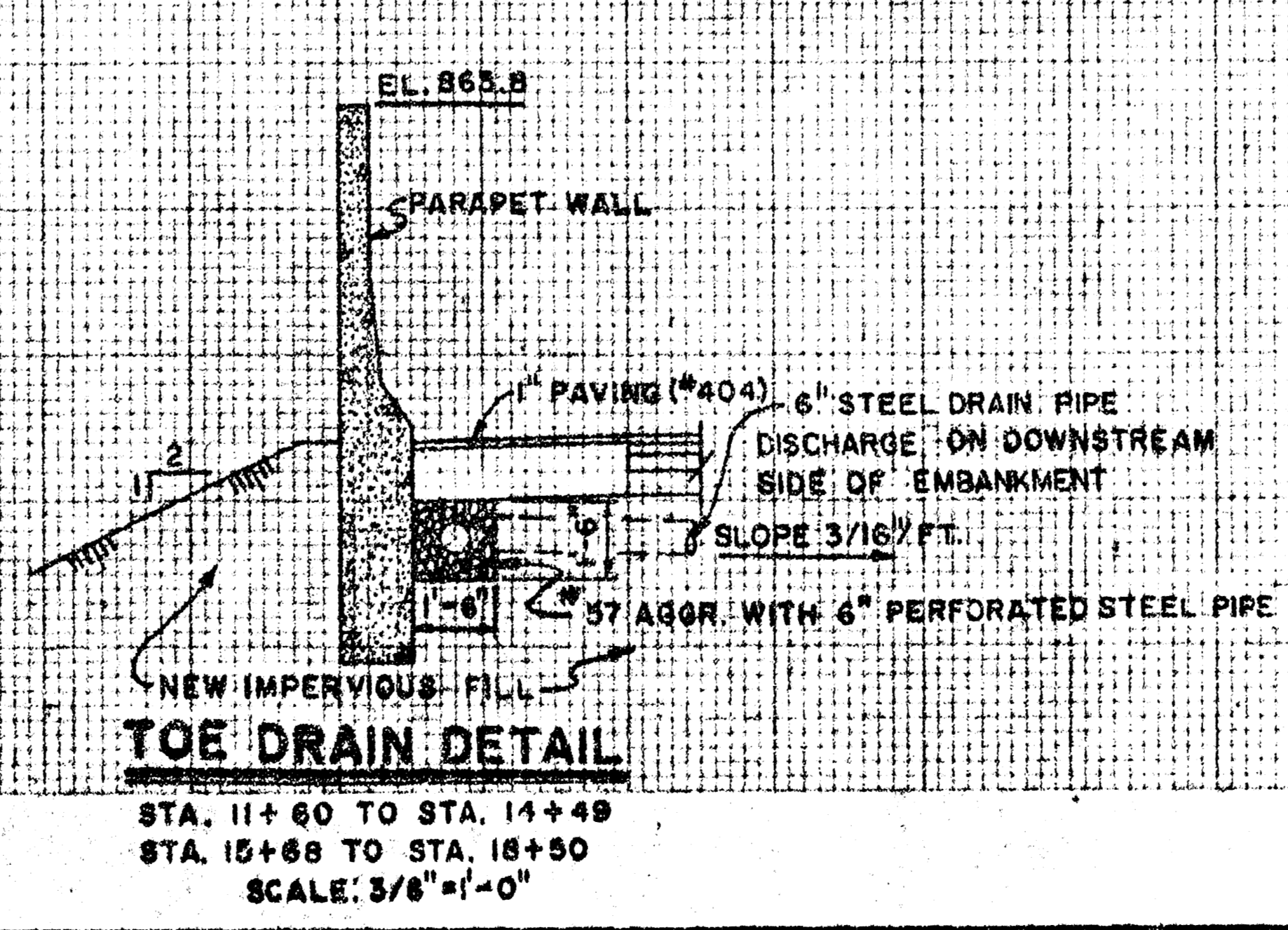
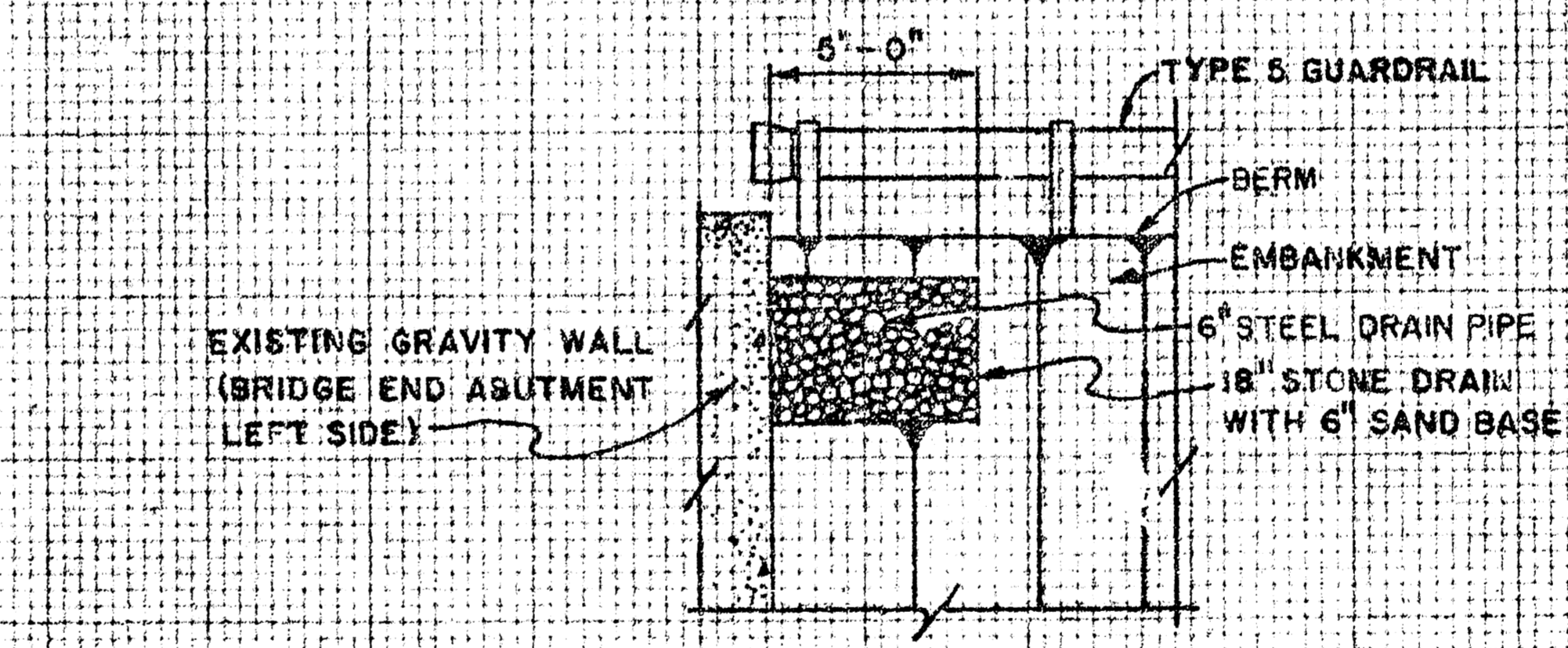
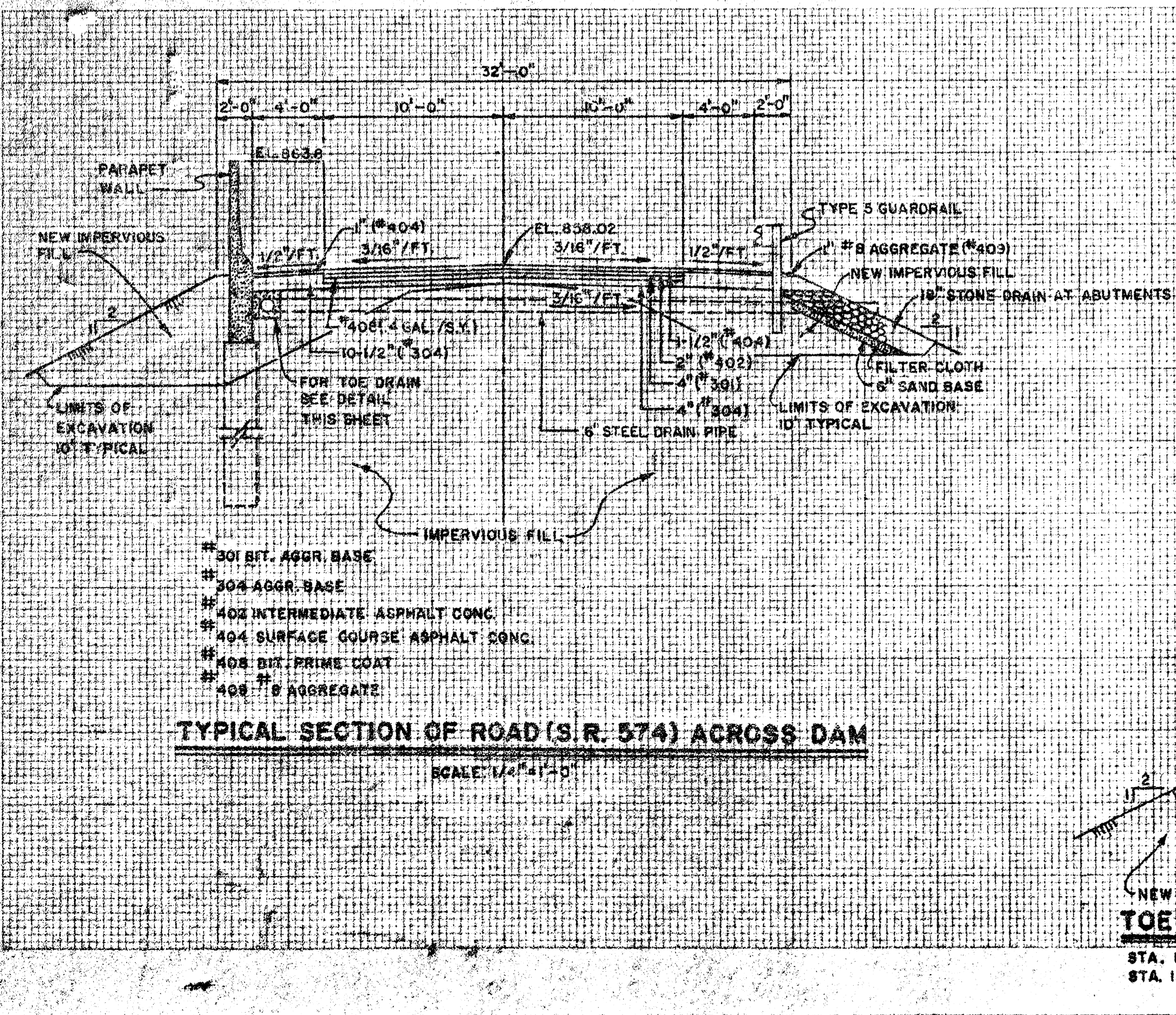
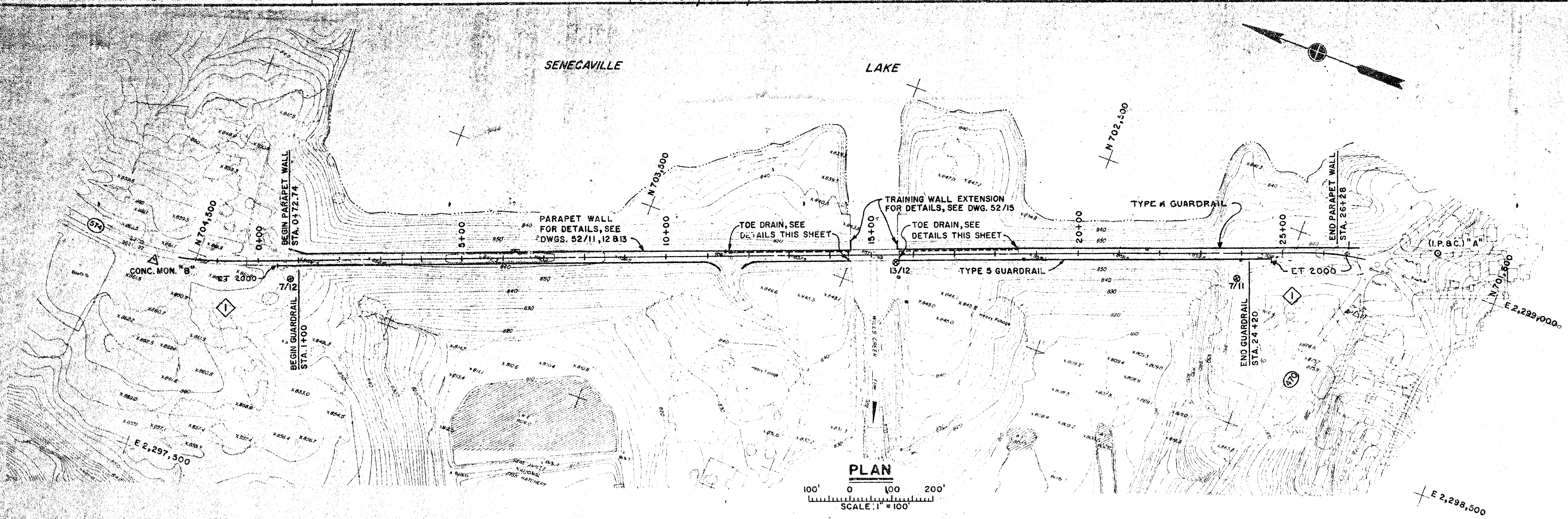


U.S. Army Engineer District, Huntington  
Corps of Engineers  
Huntington, W.VA.  
Muskingum River Basin  
Seneca Fork, Ohio  
Senecaville Lake  
Parapet Wall Plan  
Typical Road Sections  
027ha-US-4-52/6

**AS BUILT**







**NOTE:**  
UPSTREAM ROAD BERM FROM STA. -2+00 TO PARKING AREA (APPROX. STA. 0+50) AND FROM STA. 26+28 TO END OF ROAD WORK (STA. 27+00) WILL NOT BE PAVED WITH 1" SURFACE COURSE ASPHALT CONC. (#404), INSTEAD 1" #8 AGGREGATE (#409) WILL BE UTILIZED

**NOTE:**  
5' STONE DRAIN - RIGHT SIDE IS OPPOSITE HAND.

DESIGNED BY:	U.S. ARMY ENGINEER DISTRICT, HUNTINGTON		
DRAWN BY:	CORPS OF ENGINEERS		
CHECKED BY:	HUNTINGTON, W.VA.		
SUBMITTED BY:	MUSKINGUM RIVER BASIN		
CHIEF DESIGN BRANCH:	SENECA FORK, OHIO		
APPROVAL RECOMMENDED:	SENCAVILLE LAKE		
CHIEF ENG. DIVISION:	PARAPET WALL PLAN		
APPROVED FOR:	TYPICAL ROAD SECTIONS		
DATE:	SCALE: AS SHOWN	CONTR. NO.:	
			DRAWING NUMBER
			027ha-US-4-52/6
			SHEET OF