

LIC-79-0436

Licking

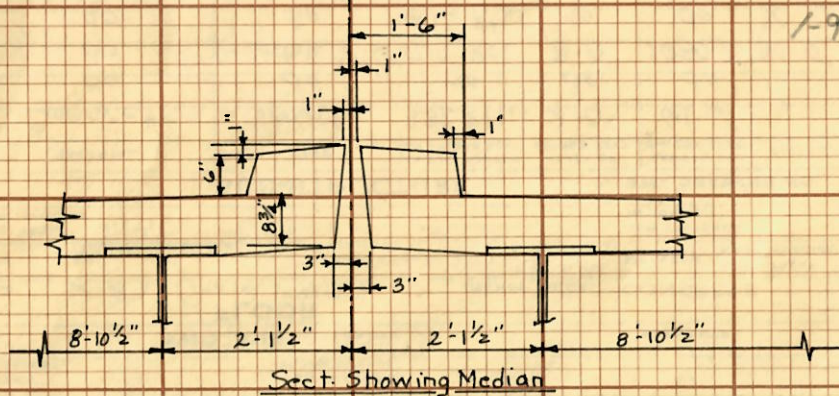
79

25

H10	H12	H18	H20	18-18	18-22	22+	12-	12-14	14+	OPEN	A	B	C	T		
STRENGTH											ROADWAY		CLEARANCE		TYPE	

= LIC-70-1561

SKETCH OF STRUCTURE SHOWING DIMENSIONS



1-93 repaired X-frames between 6+7, 7+8

PROJ 341(88) REPLACED BRIDGE RAIL WITH BR-1 - OVERLAYS WITH 1 3/4" SDC - REPLACED APPROACH SLABS WITH AS 1-81 - RAISED SUPERSTRUCTURE 2'-4" ± REPLACED MEDIAN

FORMERLY BRIDGE No 0438

LOCATION SKETCH



REMARKS:-

Profile Gr.: 1100' V.C. Grades
 Rr. +3.48% Fwd. -3.48%
 P.I. Sta. 66+00
 Paint Struct. Steel: 462,592 lbs.
 Fabricator: Bethlehem Steel Co, Leedsdale Pa.
 Materials - Same as LIC-79-0421
 Contr. - V.N. Holderman
 Proj. No: 509-56; LIC-40-14.81
 Built as BR. No. LIC-40-1648
 N.A. lanes
 Waterproofed with Gilsabind Proj 661-77
 1/2" Remove 2 AC Wearing Course, Waterproofed with Membrane, added 1 1/2" AC Wearing Surface, also Type II Deck Patching
 Proj - 140-82