

8034(OR)

GUE-70-9.43

INDEX OF SHEETS:

TITLE SHEET.....	1
GENERAL NOTES.....	2
BRIDGE NOTES.....	3
GENERAL SUMMARY.....	4
MAINTENANCE OF TRAFFIC.....	5-9
PLAN AND ELEVATION.....	10
STRUCTURE REPAIR.....	11 & 12

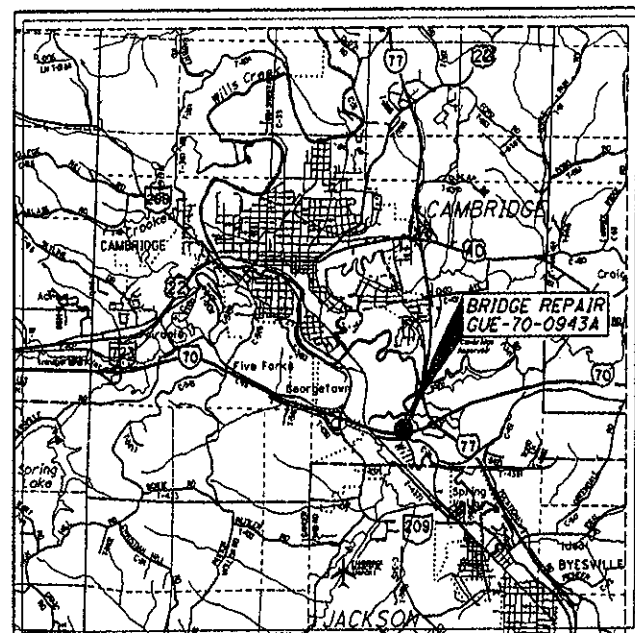
### DECK EDGE AND PARAPET REPAIR

PROJECT EARTH DISTURBED AREAS =  
N/A (MAINTENANCE PROJECT)  
ESTIMATED CONTRACTOR EARTH DISTURBED AREAS =  
N/A (MAINTENANCE PROJECT)  
NOTICE OF INTENT EARTH DISTURBED AREAS =  
N/A (MAINTENANCE PROJECT)

## 2008 SPECIFICATIONS

THE STANDARD SPECIFICATIONS OF THE STATE OF OHIO, DEPARTMENT OF TRANSPORTATION, INCLUDING CHANGES AND SUPPLEMENTAL SPECIFICATIONS LISTED IN THE PROPOSAL SHALL GOVERN THIS IMPROVEMENT.

I HEREBY APPROVE THESE PLANS AND DECLARE THAT THE MAKING OF THIS IMPROVEMENT WILL NOT REQUIRE THE CLOSING TO TRAFFIC OF THE HIGHWAY EXCEPT AS NOTED ON SHEETS 5-9 AND THAT PROVISIONS FOR THE MAINTENANCE AND SAFETY OF TRAFFIC WILL BE AS SET FORTH ON THE PLANS AND ESTIMATES.



LOCATION MAP

LATITUDE: 39°59'51"      LONGITUDE: -81°33'52"



PORTION TO BE IMPROVED	
INTERSTATE & DIVIDED HIGHWAY	
UNDIVIDED STATE & FEDERAL ROUTES	
OTHER ROADS	

## DESIGN DESIGNATION

CURRENT ADT (2008)	4500
DESIGN YEAR ADT (2028)	5400
DESIGN HOURLY VOLUME (2028)	540
DIRECTIONAL DISTRIBUTION	100%
TRUCKS (24 HOUR B&C)	1400
DESIGN SPEED	RAMP
LEGAL SPEED	RAMP

DESIGN FUNCTIONAL CLASSIFICATION - RAMP

DESIGN EXCEPTIONS - NONE



PLAN PREPARED BY:  
OHIO DEPARTMENT  
OF TRANSPORTATION  
DISTRICT 5

ENGINEERS SEAL:



SIGNED: Darrell L. Howard  
DATE: 9-2-2008

[illegible]

APPROVED Don D. Barber  
DATE 9/02/2008 DISTRICT DEPUTY DIRECTOR

APPROVED James J. Brashy, Jr.  
DATE 2-9-08 DIRECTOR, DEPARTMENT OF  
TRANSPORTATION

FEDERAL PROJECT NO.  
*NON-FEDERAL*

IPID NO. 84815

CONSTRUCTION PROJECT NO.

RAILROAD INVOLVEMENT  
NONE

GUE-70-9.43

 $\frac{1}{12}$ 

6070001 TILE PID 84815 SCALE 1 (08/21/08)

GUE-70-9.43  
088034 PID-84815  
DIST 05 10/08/2008

GENERAL NOTES

EXISTING PLANS

EXISTING PLANS ENTITLED GUE-70-6.17 MAY BE INSPECTED IN THE  
ODOT DISTRICT 5 OFFICE IN JACKSONTOWN, OHIO.

CONSTRUCTION NOTIFICATION

IN ORDER FOR ODOT TO PREPARE SIGNING WHEN REQUIRED AND TO NOTIFY THE  
GENERAL MOTORING PUBLIC, THE CONTRACTOR SHALL NOTIFY (IN WRITING) THE  
DISTRICT 5 HIGHWAY MANAGEMENT ADMINISTRATOR WITH COPIES FOR THE  
DISTRICT 5 ROADWAY SERVICES MANAGER, AREA ENGINEER AND PERMIT  
TECHNICIAN NOT LESS THAN 7 DAYS BEFORE ACTIVATING SUCH CLOSURE OR LANE  
RESTRICTION.  
SEND NOTIFICATION TO:

JULIE BROGAN  
DISTRICT 5 HIGHWAY MANAGEMENT ADMINISTRATOR  
P.O. BOX 306  
JACKSONTOWN, OHIO 43030  
(740) 323-5240

ELEVATION DATUM

ALL ELEVATIONS ARE ORTHOMETRIC HEIGHTS USING THE NORTH AMERICAN VERTICAL  
DATUM OF 1988 (NAVD 88) AND THE GEOID03 GEOID. HORIZONTAL POSITIONS ARE BASED  
ON THE OHIO STATE PLANE, A LAMBERT CONFORMAL CONIC MAP PROJECT, THE NORTH  
AMERICAN DATUM OF 1983 ADJUSTED TO THE NATIONAL SPATIAL REFERENCE SYSTEM OF  
2007 (NAD 83(NSRS 2007)) AND THE GRS80 ELLIPSOID.

GENERAL PROVISIONS

THE CONTRACTOR'S ATTENTION IS CALLED TO ALL OF SECTION 100 OF THE  
CONSTRUCTION AND MATERIAL SPECIFICATIONS OF THE OHIO DEPARTMENT OF  
TRANSPORTATION.

REMOVED MATERIALS

ALL REMOVED MATERIALS EXCEPT AS NOTED ELSEWHERE IN THE PLANS SHALL  
BECOME THE PROPERTY OF THE CONTRACTOR AND SHALL BE REMOVED BY HIM  
FROM THE JOB SITE.

WORK LIMITS

THE WORK LIMITS SHOWN ON THESE PLANS ARE FOR PHYSICAL CONSTRUCTION ONLY.  
THE INSTALLATION AND OPERATION OF ALL TEMPORARY TRAFFIC CONTROL AND  
TEMPORARY TRAFFIC CONTROL DEVICES REQUIRED BY THESE PLANS SHALL BE  
PROVIDED BY THE CONTRACTOR WHETHER INSIDE OR OUTSIDE THESE WORK LIMITS.

UTILITY OWNERSHIP

LISTED BELOW ARE ALL UTILITIES LOCATED WITHIN THE PROJECT CONSTRUCTION  
LIMITS TOGETHER WITH THEIR RESPECTIVE OWNERS:

EAST OHIO GAS CO.  
7015 FREEDOM AVE.  
NORTH CANTON, OHIO 44720  
ATTN: TIM McNUTT  
(216) 798-7209

GUERNSEY COUNTY WATER  
11272 EAST PIKE  
CAMBRIDGE, OHIO 43725  
ATTN: CLARENCE RIDGLEY  
(740) 439-1269

AMERICAN ELECTRIC POWER CO.  
6558 GLEN HIGHWAY  
CAMBRIDGE, OHIO 43725  
ATTN: DAN BROUSE  
(740) 435-1014

VERIZON  
9444 CAMPBELL ST.  
CAMBRIDGE, OHIO 43725  
ATTN: BEN NOBLE  
(740) 432-7137

AIRWAY/HIGHWAY CLEARANCE FOR AIRPORTS AND HELIPORTS

THIS PROJECT HAS BEEN IDENTIFIED AS BEING WITHIN THE INFLUENCE AREA OF  
A PUBLIC USE AIRPORT OR HELIPORT. THE CONTRACTOR IS ADVISED THAT NO  
TEMPORARY STRUCTURES OR CONSTRUCTION EQUIPMENT AT MAXIMUM OPERATING  
HEIGHT SHALL EXCEED A HEIGHT OF 40 FT. IF ANY TEMPORARY STRUCTURES OR  
CONSTRUCTION EQUIPMENT WILL EXCEED THIS HEIGHT, THE CONTRACTOR IS  
ADVISED THAT COORDINATION WITH THE FEDERAL AVIATION ADMINISTRATION  
(FAA) WILL BE NECESSARY PRIOR TO ERECTING SUCH TEMPORARY STRUCTURES OR  
OPERATING SUCH EQUIPMENT ON THE PROJECT. THE CONTRACTOR WILL BE  
REQUIRED TO SUBMIT FORM 7460-1 TO THE FAA. A COPY OF THE SUBMISSION  
AND TWO COPIES OF FORM 7460-1 SHALL BE FORWARDED TO THE ODOT OFFICE OF  
AVIATION. THE CONTRACTOR IS ADVISED THAT NO TEMPORARY STRUCTURES OR  
CONSTRUCTION EQUIPMENT SHALL EXCEED THE PERMISSIBLE HEIGHT, UNTIL A  
COPY OF THE FAA APPROVAL AND ODOT OFFICE OF AVIATION PERMIT HAS BEEN  
FURNISHED TO THE PROJECT ENGINEER.

THE FEDERAL AVIATION ADMINISTRATION  
GREAT LAKES REGIONAL OFFICE  
AIR TRAFFIC DIVISION AGL-530  
2300 EAST DEVON AVENUE  
DES PLAINES, ILLINOIS 60018  
PH. 847-294-7566

OHIO DEPARTMENT OF TRANSPORTATION  
OFFICE OF AVIATION  
2829 WEST DUBLIN-GRANVILLE ROAD  
COLUMBUS, OHIO 43235  
PH. 614-793-5046

PORTABLE CONCRETE BARRIER REMOVAL

AFTER THE CONTRACTOR HAS SETUP THE MAINTENANCE OF TRAFFIC AS PER PAGES 5 THRU 9  
OF THIS PLAN THE DISTRICT 5 ROADWAY SERVICES MANAGER WILL REMOVE THE TEMPORARY  
PORTABLE CONCRETE BARRIER THAT IS PROTECTING THE DAMAGED PARAPET. CONTACT  
TOM BRADFORD AT THE NUMBER BELOW TO COORDINATE THE REMOVAL. THIS NOTIFICATION  
SHOULD BE 7 DAYS BEFORE THE CONTRACTOR BEGINS WORK.

TOM BRADFORD  
DISTRICT 5 ROADWAY SERVICES MANAGER  
P.O. BOX 306  
JACKSONTOWN, OHIO 43030  
(740) 323-5260

ITEM 614 PORTABLE CHANGEABLE MESSAGE SIGN,  
AS PER PLAN

THE CONTRACTOR SHALL FURNISH, INSTALL, MAINTAIN  
AND REMOVE, WHEN NO LONGER NEEDED, CHANGEABLE  
MESSAGE SIGNS, ON SITE, FOR THE DURATION OF THE  
PROJECT. THE SIGNS SHALL BE OF A TYPE SHOWN ON A  
LIST OF APPROVED PCMS UNITS MAINTAINED BY THE  
DIRECTOR. THE LIST CURRENTLY CONTAINS CLASS III  
WITH A MINIMUM LEGIBILITY DISTANCE OF 650 FT.  
EACH SIGN SHALL BE TRAILER MOUNTED AND EQUIPPED  
WITH A FUNCTIONAL DIMMING MECHANISM TO DIM THE  
SIGN DURING DARKNESS AND A TAMPER AND VANDAL  
PROOF ENCLOSURE. EACH SIGN SHALL BE PROVIDED WITH  
APPROPRIATE TRAINING AND OPERATION INSTRUCTIONS  
TO ENABLE ON-SITE PERSONNEL TO OPERATE AND  
TROUBLE-SHOOT THE UNIT. THE SIGN SHALL ALSO BE  
CAPABLE OF BEING POWERED BY AN ELECTRICAL SERVICE  
DROP FROM A LOCAL UTILITY COMPANY. SURFACES OF  
A 9-INCH BY 15-INCH MINIMUM SIZE FACING TRAFFIC.  
PLACEMENT, OPERATION, MAINTENANCE AND ALL  
ACTIVATION OF THE SIGNS BY THE CONTRACTOR SHALL  
BE AS DIRECTED BY THE ENGINEER. THE PCMS SHALL  
BE LOCATED IN A HIGHLY VISIBLE POSITION YET  
PROTECTED FROM TRAFFIC. THE CONTRACTOR SHALL,  
AT THE DIRECTION OF THE ENGINEER, RELOCATE THE  
PCMS TO IMPROVE VISIBILITY OR ACCOMMODATE  
CHANGED CONDITIONS. WHEN NOT IN USE, THE PCMS  
WILL BE OFF, FACING AWAY FROM ALL TRAFFIC AND  
SHALL DISPLAY ONE OR MORE HIGH INTENSITY YELLOW  
REFLECTIVE SHEETING SURFACES OF A 9-INCH BY 15-INCH  
MINIMUM SIZE FACING TRAFFIC. THE ENGINEER SHALL  
BE PROVIDED ACCESS TO EACH SIGN UNIT AND SHALL  
BE PROVIDED WITH APPROPRIATE TRAINING AND  
OPERATION INSTRUCTIONS TO ENABLE ODOT PERSONNEL  
TO OPERATE AND TROUBLESHOOT THE UNIT AND TO  
REVISE SIGN MESSAGES, IF NECESSARY. ALL MESSAGES  
TO BE DISPLAYED ON THE SIGN WILL BE PROVIDED BY  
THE ENGINEER. A LIST OF ALL REQUIRED PREPROGRAMMED  
MESSAGES WILL BE GIVEN TO THE CONTRACTOR AT THE  
PROJECT PRECONSTRUCTION CONFERENCE. THE SIGN SHALL  
HAVE THE CAPABILITY TO STORE UP TO 99 MESSAGES.  
MESSAGE MEMORY OF PREPROGRAMMED DISPLAYS SHALL  
NOT BE LOST AS A RESULT OF POWER FAILURES TO THE  
ONBOARD COMPUTER. THE SIGN LEGEND SHALL BE CAPABLE  
OF BEING CHANGED IN THE FIELD. THREE-LINE PRESENTATION  
FORMATS WITH UP TO SIX MESSAGE PHASES SHOULD BE  
EMPLOYED. ALTHOUGH THREE-PHRASES MAY BE USED IN USUAL  
CONDITIONS. THE PCMS FORMAT SHALL PERMIT THE COMPLETE  
MESSAGE FOR EACH PHASE TO BE READ AT LEAST ONCE. THE  
PCMS SHALL CONTAIN AN ACCURATE CLOCK AND PROGRAMMING  
LOGIC WHICH WILL ALLOW THE SIGN TO BE ACTIVATED,  
DEACTIVATED OR MESSAGES CHANGED AUTOMATICALLY AT  
DIFFERENT TIMES OF THE DAY FOR DIFFERENT DAYS OF THE  
WEEK. THE PCMS UNIT SHALL BE MAINTAINED IN GOOD WORKING  
ORDER BY THE CONTRACTOR IN ACCORDANCE WITH THE  
PROVISIONS OF 614.03(C). THE CONTRACTOR SHALL, PRIOR  
TO ACTIVATING THE UNIT, MAKE ARRANGEMENTS WITH AN  
AUTHORIZED SERVICE AGENT FOR THE PCMS TO ASSURE PROMPT  
SERVICE IN THE EVENT OF FAILURE. ANY FAILURE SHALL NOT  
RESULT IN THE SIGN BEING OUT OF SERVICE FOR MORE  
THAN 12 HOURS INCLUDING WEEKENDS. FAILURE TO COMPLY  
MAY RESULT IN AN ORDER TO STOP WORK AND OPEN ALL  
TRAFFIC LANES AND/OR IN THE DEPARTMENT TAKING  
APPROPRIATE ACTION TO SAFELY CONTROL TRAFFIC AND  
THE ENTIRE COST TO CONTROL TRAFFIC ACCRUED BY THE  
DEPARTMENT WILL BE DEDUCTED FROM MONEYS DUE, OR TO  
BECOME DUE TO THE CONTRACTOR ON HIS CONTRACT. THE  
CONTRACTOR SHALL BE RESPONSIBLE FOR 24 HOUR PER  
DAY OPERATION AND MAINTENANCE OF THESE SIGNS ON THE  
PROJECT FOR THE DURATION OF THE PHASES WHEN THE PLAN  
REQUIRES THEIR USE. THE REQUIREMENT TO FURNISH,  
INSTALL, MAINTAIN AND REMOVE A PCMS UNIT ON THIS  
PROJECT SHALL NOT IN ANY WAY RELIEVE THE CONTRACTOR  
OF HIS RESPONSIBILITIES AS OUTLINED IN 104.04.  
PAYMENT FOR THE ABOVE DESCRIBED ITEM SHALL BE AT  
THE CONTRACT UNIT PRICE BID PER SIGN-MONTH FOR EACH  
ITEM 614 PORTABLE CHANGEABLE MESSAGE SIGN, AS PER  
PLAN AND SHALL INCLUDE ALL LABOR, MATERIALS,  
EQUIPMENT, FUELS, LUBRICATING OILS, SOFTWARE,  
HARDWARE, AND INCIDENTALS TO PERFORM THE ABOVE  
DESCRIBED WORK. THE FOLLOWING QUANTITY HAS BEEN  
INCLUDED IN THE GENERAL SUMMARY TO PERFORM THE  
WORK.

ITEM 614, PORTABLE CHANGEABLE MESSAGE SIGN,  
AS PER PLAN, 3 SIGN MONTH  
THIS PROJECT SHALL REQUIRE 3 (TWO) (1 MONTHS EACH)  
ITEM 614 PORTABLE CHANGEABLE MESSAGE SIGNS.

DESIGN SPECIFICATIONS

THIS STRUCTURE CONFORMS TO "STANDARD SPECIFICATIONS FOR HIGHWAY BRIDGES" ADOPTED BY THE AMERICAN ASSOCIATION OF STATE HIGHWAY AND TRANSPORTATION OFFICIALS, 2002 AND THE ODOT BRIDGE DESIGN MANUAL.

EXISTING STRUCTURE VERIFICATION

DETAILS AND DIMENSIONS SHOWN ON THESE PLANS PERTAINING TO THE EXISTING STRUCTURE HAVE BEEN OBTAINED FROM PLANS OF THE EXISTING STRUCTURE AND FROM FIELD OBSERVATIONS AND MEASUREMENTS. CONSEQUENTLY, THEY ARE INDICATIVE OF THE EXISTING STRUCTURE AND THE PROPOSED WORK BUT THEY SHALL BE CONSIDERED TENTATIVE AND APPROXIMATE. THE CONTRACTOR IS REFERRED TO CMS SECTIONS 102.05, 105.02 AND 513.04.

BASE CONTRACT BID PRICES UPON A RECOGNITION OF THE UNCERTAINTIES DESCRIBED ABOVE AND UPON A PREBID EXAMINATION OF THE EXISTING STRUCTURE. HOWEVER, THE DEPARTMENT WILL PAY FOR ALL PROJECT WORK BASED UPON ACTUAL DETAILS AND DIMENSIONS WHICH HAVE BEEN VERIFIED IN THE FIELD.

BRIDGE NOTES

PORTIONS OF STRUCTURE REMOVED, AS PER PLAN, SUPERSTRUCTURE

DESCRIPTION: THIS WORK CONSISTS OF THE REMOVAL OF THE CONCRETE DECK INCLUDING BRIDGE PARAPET RAILING AS DETAILED IN THE PLANS. THE PROVISIONS OF ITEM 202 APPLY EXCEPT AS SPECIFIED BY THE FOLLOWING NOTES. PERFORM WORK CAREFULLY DURING DECK REMOVALS TO PROTECT PORTIONS OF SUCH SYSTEMS THAT ARE TO BE SALVAGED AND INCORPORATED INTO THE PROPOSED STRUCTURE. IN THIS RESPECT, THE USE OF EXPLOSIVES, HEADACHE BALLS AND/OR HOE RAM TYPE EQUIPMENT IS PROHIBITED. SUBMIT CONSTRUCTION PLANS ACCORDING TO CMS 501.05.

PROTECTION OF TRAFFIC: PRIOR TO DEMOLITION OF ANY PORTIONS OF THE EXISTING SUPERSTRUCTURE, SUBMIT PLANS FOR THE PROTECTION OF TRAFFIC (VEHICULAR, PEDESTRIAN, BOAT, ETC.) ADJACENT TO AND/OR UNDER THE STRUCTURE TO THE DIRECTOR AT LEAST 7 DAYS BEFORE CONSTRUCTION BEGINS. THESE PLANS SHALL INCLUDE PROVISIONS FOR ANY DEVICES AND STRUCTURES THAT MAY BE NECESSARY TO ENSURE SUCH PROTECTION. MAINTAIN EXISTING VERTICAL CLEARANCES AT ALL TIMES EXCEPT AS OTHERWISE APPROVED BY THE DIRECTOR.

PROTECTION OF STEEL SUPPORT SYSTEMS: BEFORE DECK SLAB CUTTING IS PERMITTED, DRAW THE OUTLINE OF PRIMARY STEEL MEMBERS IN CONTACT WITH THE BOTTOM OF THE DECK ON THE SURFACE OF DECK. DRILL SMALL DIAMETER PILOT HOLES 2 INCHES OUTSIDE THESE LINES TO CONFIRM THE LOCATION OF FLANGE EDGES. PERFORM WORK CAREFULLY DURING CUTTING OF THE DECK SLAB TO AVOID DAMAGING STEEL MEMBERS AND REINFORCING STEEL THAT ARE TO BE INCORPORATED INTO THE PROPOSED STRUCTURE.

REMOVAL METHODS: THE CONTRACTOR MAY REMOVE CONCRETE BY CUTTING AND BY MEANS OF HAND OPERATED PNEUMATIC HAMMERS EMPLOYING POINTED OR BLUNTED CHISEL TYPE TOOLS. FOR REMOVALS OVER BRIDGE MEMBERS (STEEL BEAM), THE CONTRACTOR MAY USE A HAMMER HEAVIER THAN 35 POUNDS BUT NOT TO EXCEED 90 POUNDS UNLESS APPROVED BY THE ENGINEER. REMOVAL METHODS OVER BRIDGE MEMBERS SHALL ENSURE ADEQUATE DEPTH CONTROL AND PREVENT NICKING OR GOUGING THE PRIMARY STEEL MEMBERS AND REINFORCING STEEL THAT IS TO BE PRESERVED IN PLACE.

DECK REMOVALS: DUE TO THE POSSIBLE PRESENCE OF WELDED ATTACHMENTS TO EXISTING STRUCTURAL STEEL (FINISHING MACHINE, SCUPPER AND FORM SUPPORTS, ETC.), PERFORM WORK CAREFULLY DURING DECK REMOVAL TO AVOID DAMAGING GIRDERS WHICH ARE TO REMAIN. REPLACE OR REPAIR GIRDERS DAMAGED BY THE REMOVAL OPERATIONS AT NO COST TO THE PROJECT. SUBMIT PROPOSED REPAIRS, DEVELOPED BY AN OHIO REGISTERED PROFESSIONAL ENGINEER, IN WRITING TO THE DIRECTOR AT LEAST 3 DAYS BEFORE PERFORMING REPAIR WORK.

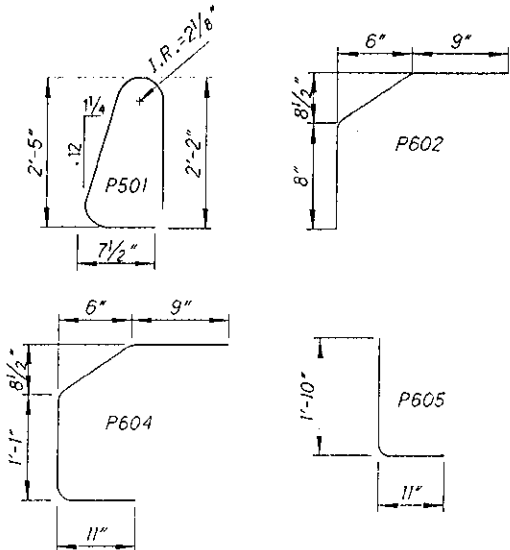
MEASUREMENT & PAYMENT: THE DEPARTMENT WILL MEASURE THE QUANTITY OF REMOVALS ON A CU. YD. BASIS. THE DEPARTMENT WILL PAY FOR THE ACCEPTED QUANTITIES OF REMOVALS AT THE CONTRACT PRICE FOR ITEM 202, PORTIONS OF STRUCTURE REMOVED, AS PER PLAN, SUPERSTRUCTURE.

G070001.BGS SCALE 1 P1084815 (08/21/08)

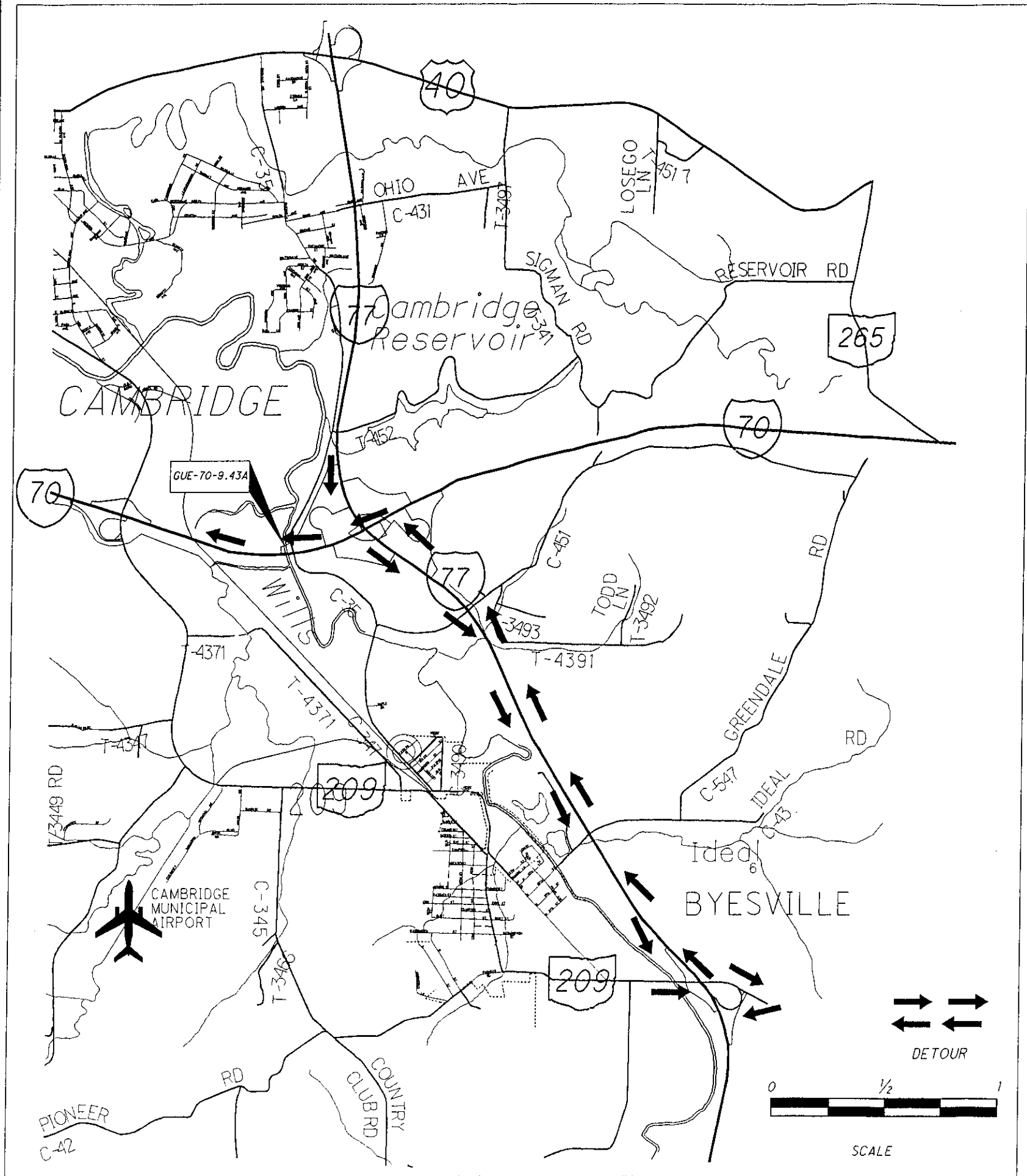
ITEM	ITEM EXT.	GRAND TOTAL	UNIT	DESCRIPTION
ROADWAY				
606	98200	LUMP		GUARDRAIL, MISC.: REATTACHMENT OF EXISTING BRIDGE TERMINAL ASSEMBLY
SUPERSTRUCTURE				
202	11301	8	CU YD	PORTIONS OF STRUCTURE REMOVED, AS PER PLAN, SUPERSTRUCTURE
509	10000	1160	POUND	EPOXY COATED REINFORCING STEEL
510	10000	44	EACH	DOWEL HOLES WITH NONSHRINK, NONMETALLIC GROUT
511	31500	8	CU YD	CLASS 5 CONCRETE, SUPERSTRUCTURE
MAINTENANCE OF TRAFFIC				
614	11100	100	HOURL	LAW ENFORCEMENT OFFICER WITH PATROL CAR
614	13100	12	EACH	BARRIER REFLECTOR
614	18601	3	SIGN MNTH	PORTABLE CHANGEABLE MESSAGE SIGN, AS PER PLAN
622	40020	20	FT	PORTABLE CONCRETE BARRIER, 32"
622	40040	250	FT	PORTABLE CONCRETE BARRIER, 32", BRIDGE MOUNTED
614	11000	LUMP		MAINTAINING TRAFFIC
619	16000	1	MONTH	FIELD OFFICE, TYPE A
623	10000	LUMP		CONSTRUCTION LAYOUT STAKES
624	10000	LUMP		MOBILIZATION

REINFORCING STEEL SCHEDULE

MARK	NO. REQ'D.	SHAPE	LENGTH	WEIGHT
P501	48	BT.	5'-3"	263
P502	14	ST.	29'-8"	433
P601	2	ST.	30'-4"	91
P602	22	BT.	2'-9"	91
P603	22	ST.	1'-5"	47
P604	26	BT.	3'-5"	134
P605	26	BT.	2'-7"	101
TOTAL				1160



BENDING DIAGRAM

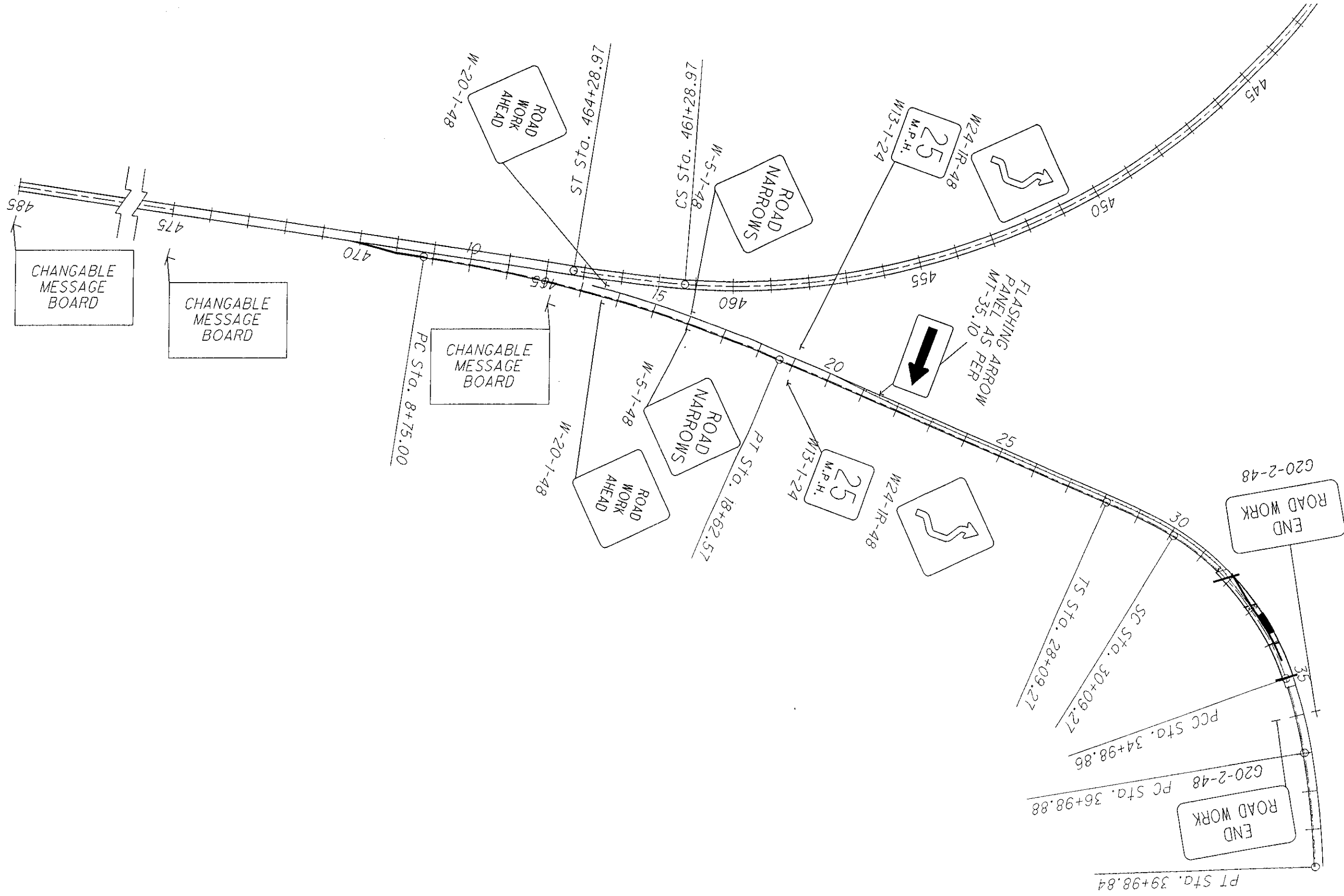


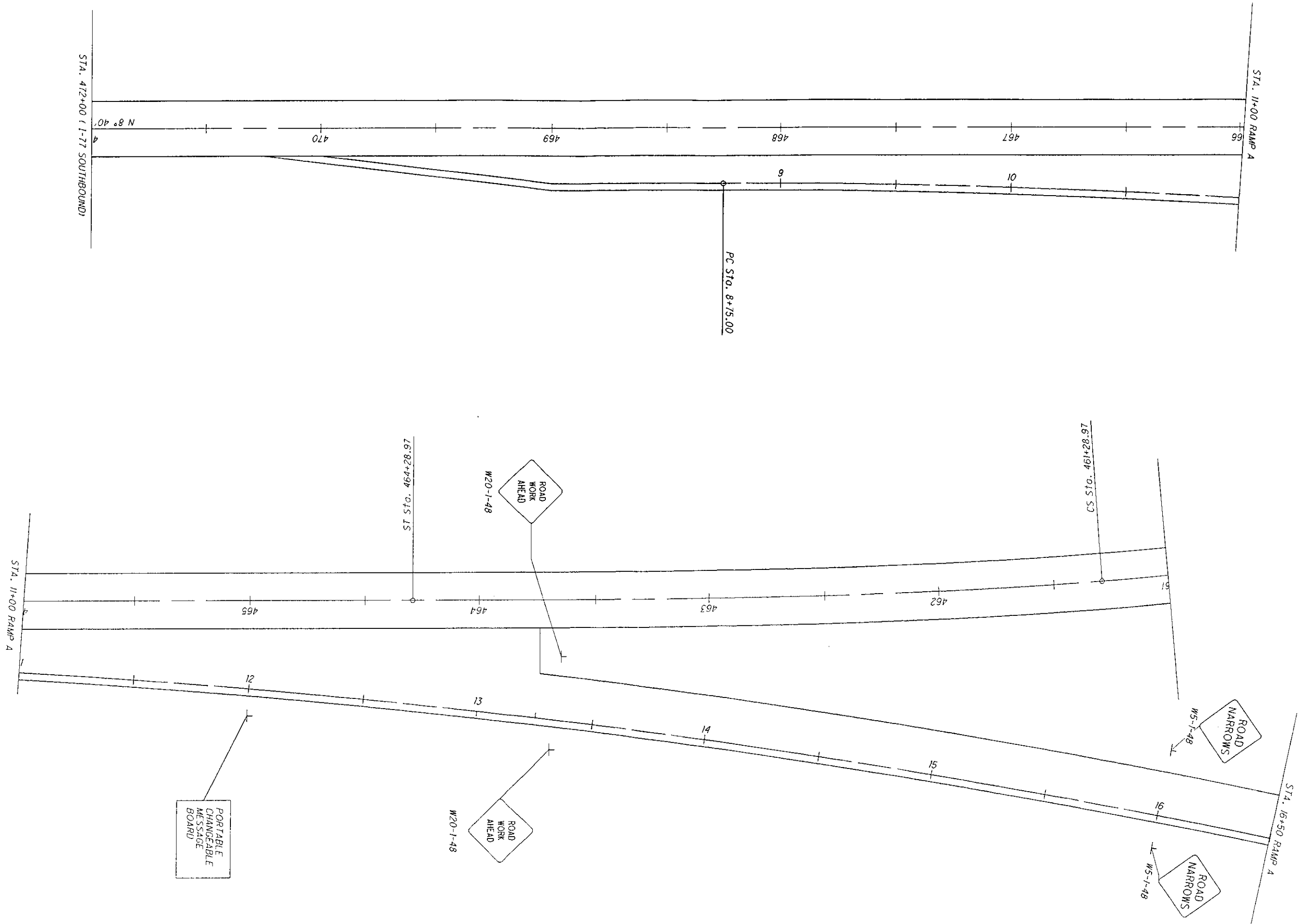
ITEM 614 - MAINTAINING TRAFFIC  
 RAMP A CARRYING TRAFFIC FROM I-77 SOUTHBOUND  
 TO I-70 WESTBOUND SHALL BE MAINTAINED WITH  
 THE EXCEPTION OF TRUCKS WITH A WIDTH GREATER  
 THAN 12'. THE TRUCKS GREATER THAN 12' WILL  
 BE DIRECTED BY ODOT TO FOLLOW THE DETOUR GIVEN ON  
 THIS PAGE.

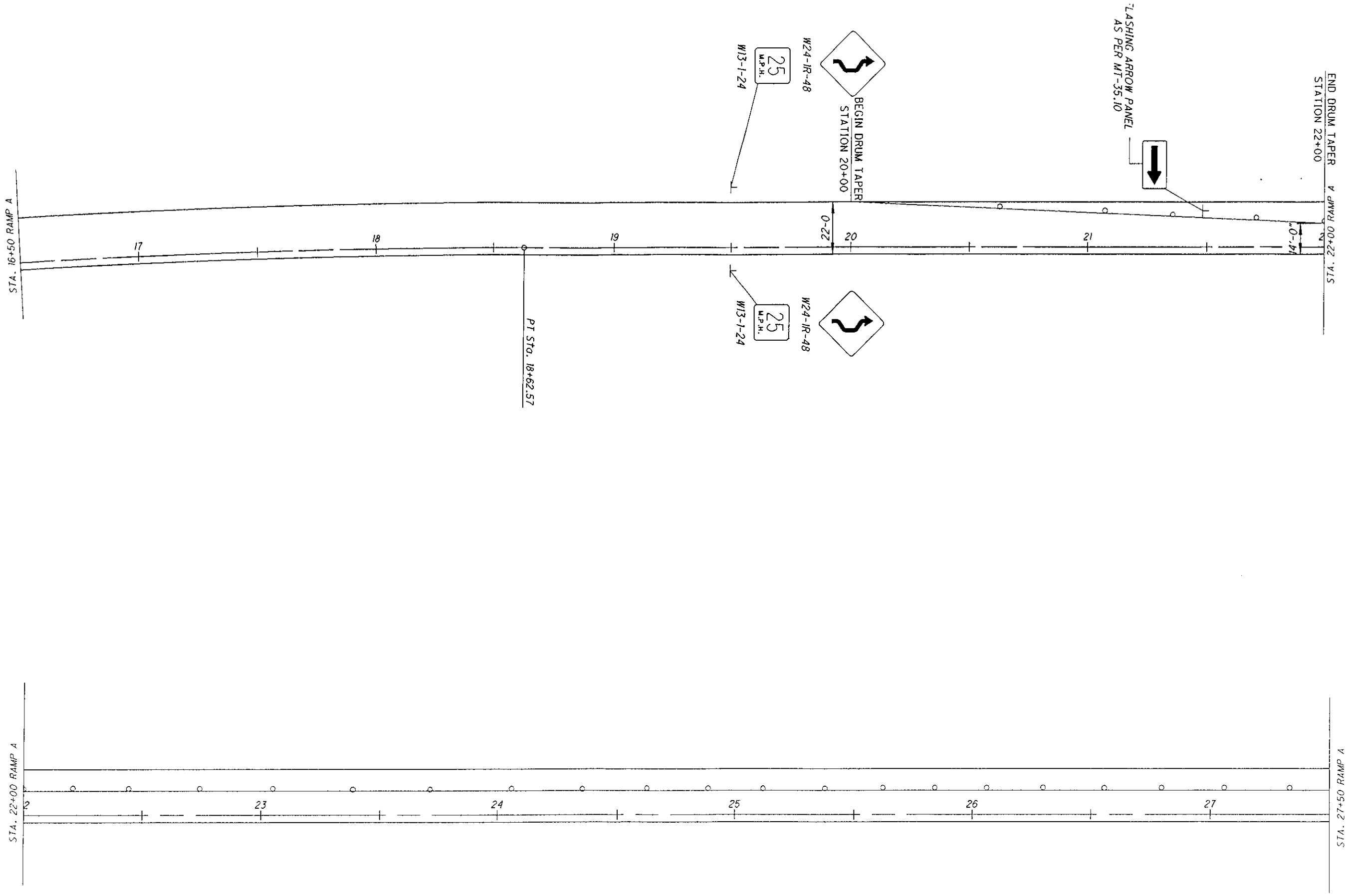
THE MAINTENANCE OF TRAFFIC SHALL BE THE RESPONSIBILITY OF  
 THE CONTRACTOR. THE TRAFFIC SHALL BE MAINTAINED AS PER  
 SHEETS 6-9 OF THIS PLAN. ANY FLAGGING OR STOPPING OF  
 TRAFFIC WILL REQUIRE THE APPROVAL OF THE ENGINEER.  
 DURING THE TIME THAT THE CONTRACTOR IS NOT ON THE PROJECT  
 FOR MORE THAN 24 HOURS (EXAMPLE CURE TIMES), THE CONTRACTOR  
 SHALL MOVE THE BARRIER TO ALLOW FOR THE MAXIMUM OPENING  
 POSSIBLE. THE DRUMS AND SIGNS WILL HAVE TO BE ADJUSTED ACCORDINGLY.

ALL WORK AND TRAFFIC CONTROL DEVICES SHALL BE IN  
 ACCORDANCE WITH ITEM 614 AND OTHER APPLICABLE PORTIONS  
 OF THE SPECIFICATIONS, AS WELL AS THE OHIO MANUAL OF  
 UNIFORM TRAFFIC CONTROL DEVICES. PAYMENT FOR ALL  
 LABOR, EQUIPMENT AND MATERIALS SHALL BE INCLUDED IN  
 THE LUMP SUM CONTRACT PRICE BID FOR ITEM 614 -  
 MAINTAINING TRAFFIC, UNLESS SEPARATELY ITEMIZED IN THE  
 PLANS.

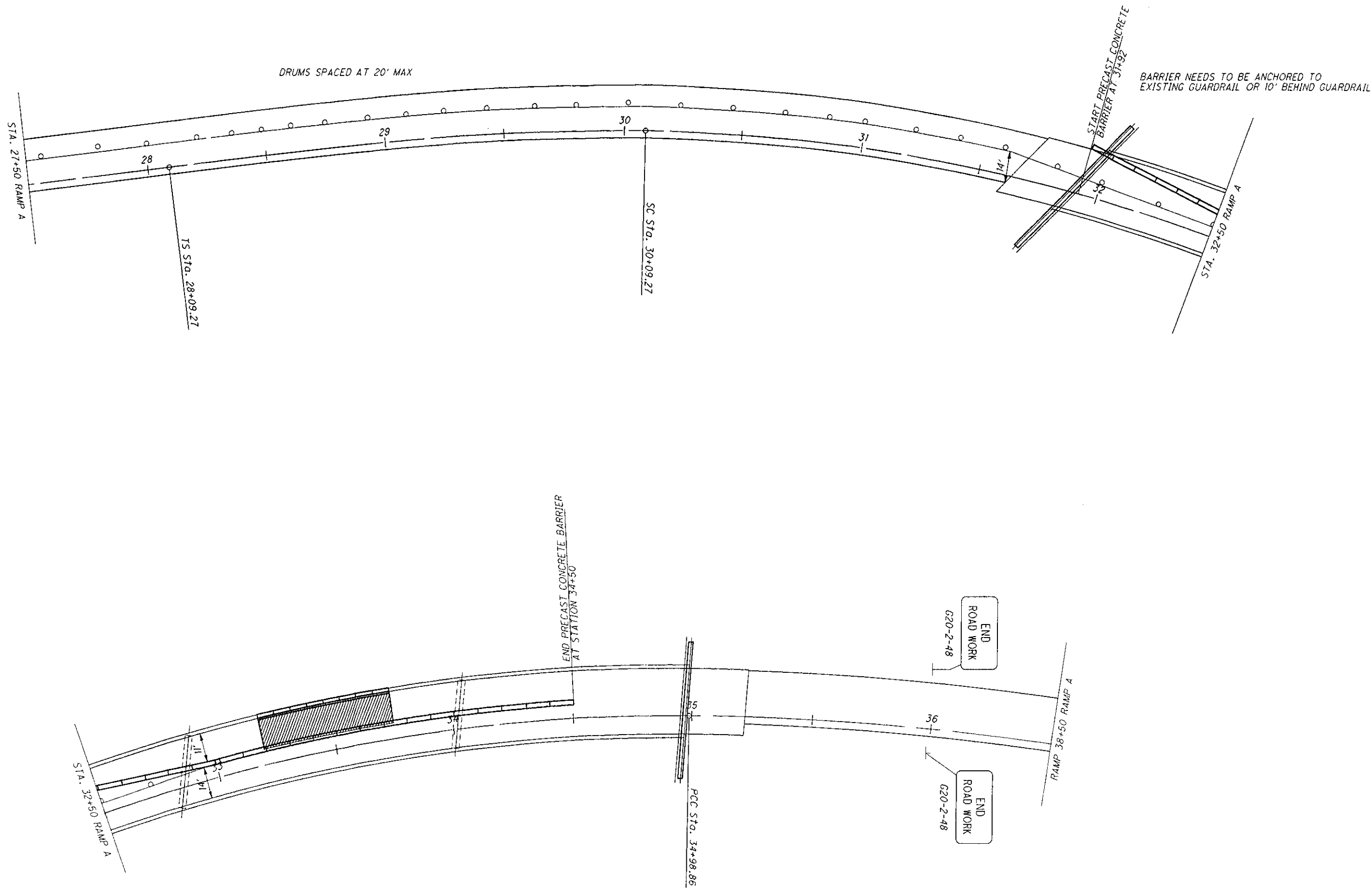
DESIGN AGENCY		OHIO DEPARTMENT OF TRANSPORTATION	
DISTRICT 5		DISTRICT 5	
DATE	08/20/08	STRUCTURE FILE NUMBER	3001202
REVIEWED	DIF	REVIEWED	
DRAWN	RSD	CHECKED	TAG
DESIGNED	JDR	CHECKED	TAG
MAINTAINING TRAFFIC			
BR. NO. GUE-70-0943A			
RAMP 'A' OVER WILLS CREEK			
GUE-70-9.43			
5/12			



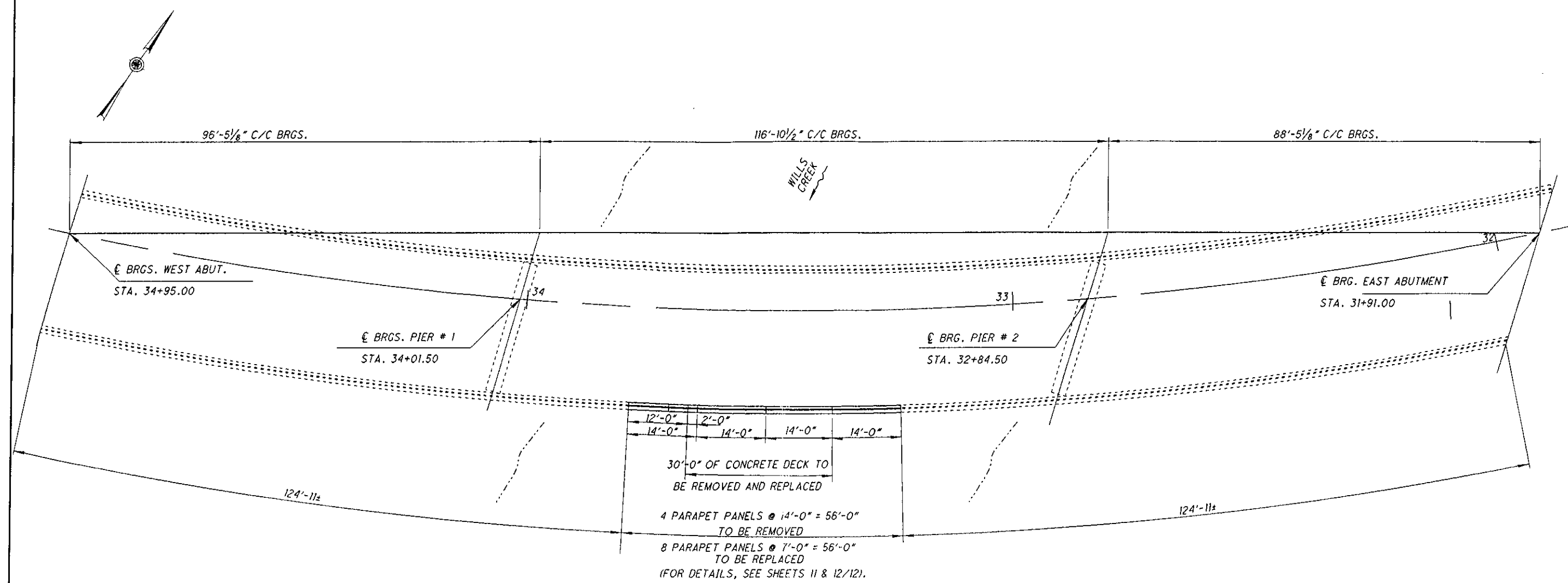




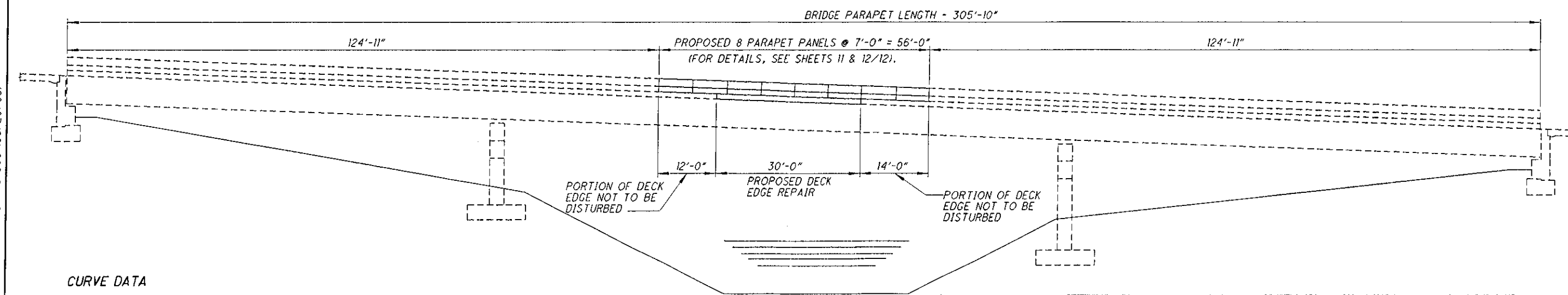




G0700001.BPE SCALE 10.6667 PID 84815 JOB #457306 (08/20/08)



PLAN



ELEVATION

CURVE DATA

PI - STA. 32+19.72  
L - 47°10'02"  
Dc - 8°00'  
Lc - 489.59  
Ls - 200'  
PVI - STA. 34+50.00  
VC - 250'  
ELEV. - 805.92'  
CORR. - 1.10'  
PROF. - GR-807.02'  
g1 = -4.20% g2 = -0.68%

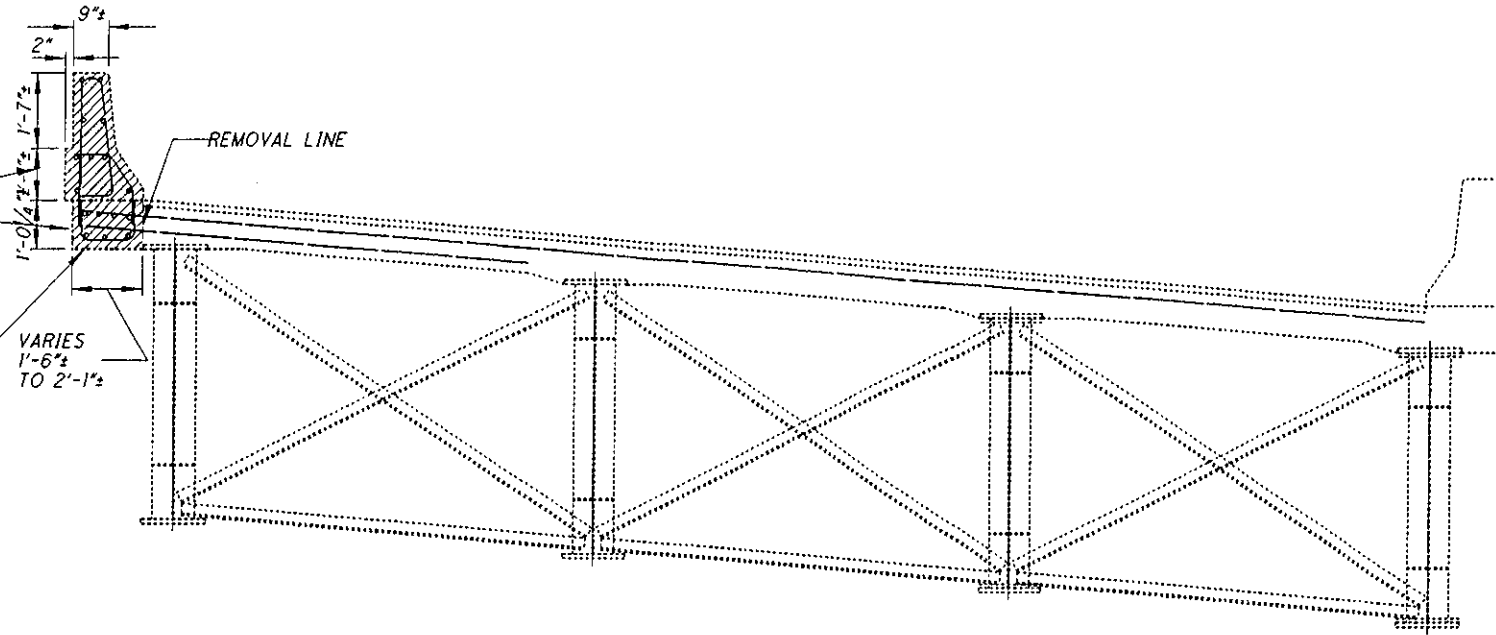
EXISTING STRUCTURE	REHABILITATED STRUCTURE
TYPE: CONTINUOUS WELDED STEEL GIRDER WITH REINFORCED CONCRETE DECK AND SUBSTRUCTURE SPANS: 93'-6", 117'-0", 93'-6" C/C BRGS. ALONG € ROADWAY: 27'-0" TOE/TOE CONCRETE DEFLECTOR PARAPET LOADING: CF = 2000 (1957) WEARING SURFACE: 2" SUPERPLASTICIZED CONCRETE OVERLAY SKEW: 16°17'41" LEFT FW'D. TO REFERENCE CHORD APPROACH SLAB: 25'-0" LONG (AS-I-81) SUPERELEVATION: 0.083 FT./FT. SFN: 3001202	BRIDGE RAILING: REPAIR OF DAMAGED SECTION SFN: 3001202

PORTION OF CONCRETE PARAPET  
AND DECK TO BE REMOVED AND  
REPLACED.  
(SEE DETAILS AND LOCATIONS  
ON SHEETS 6 & 12/12.)

NOTE:  
ALL RE-STEEL LOCATED IN  
THE DECK SECTION SHALL  
BE PRESERVED IN PLACE

VARIES  
1'-6"  
TO 2'-1"

REMOVAL LINE

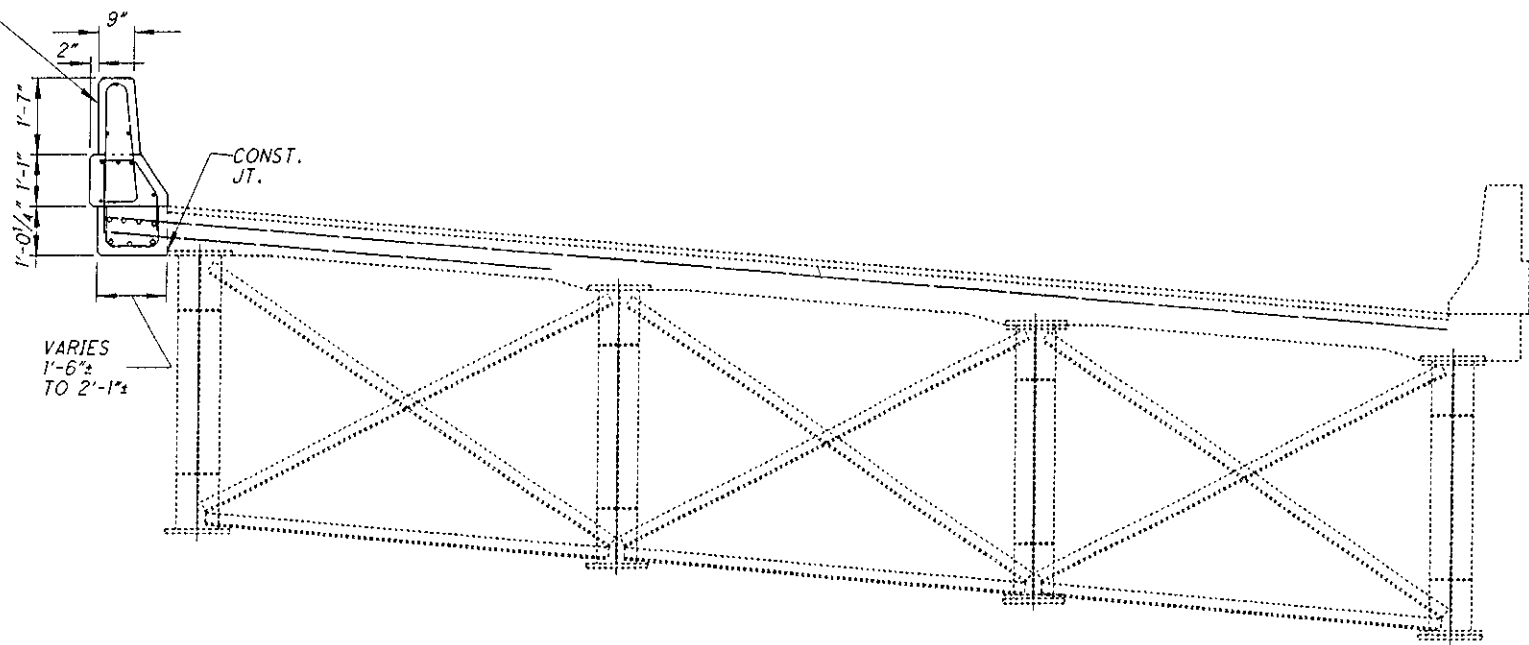


EXISTING

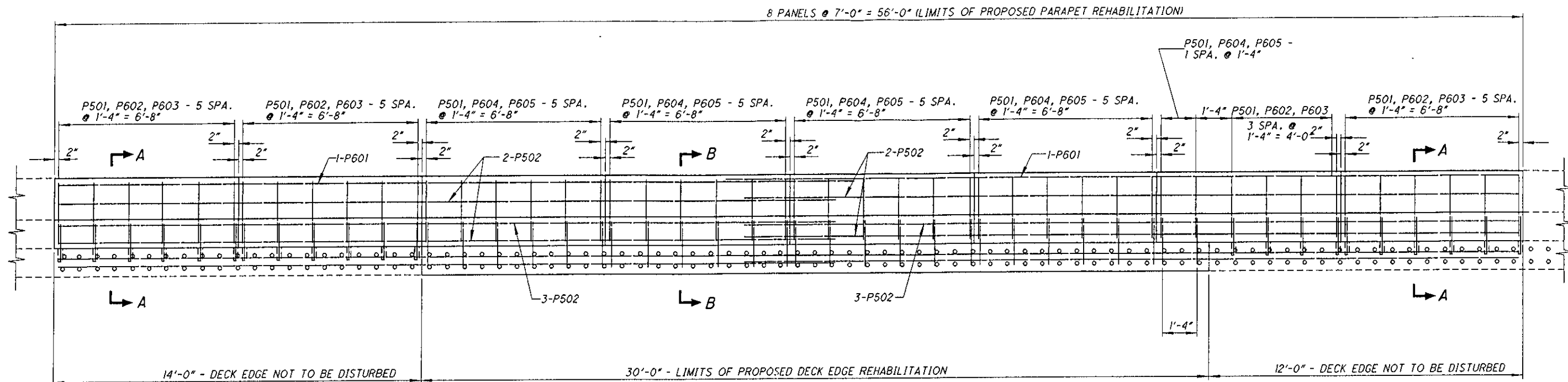
FOR DETAILS OF PROPOSED  
REHABILITATION, SEE SHEET  
12/12.

CONST.  
JT.

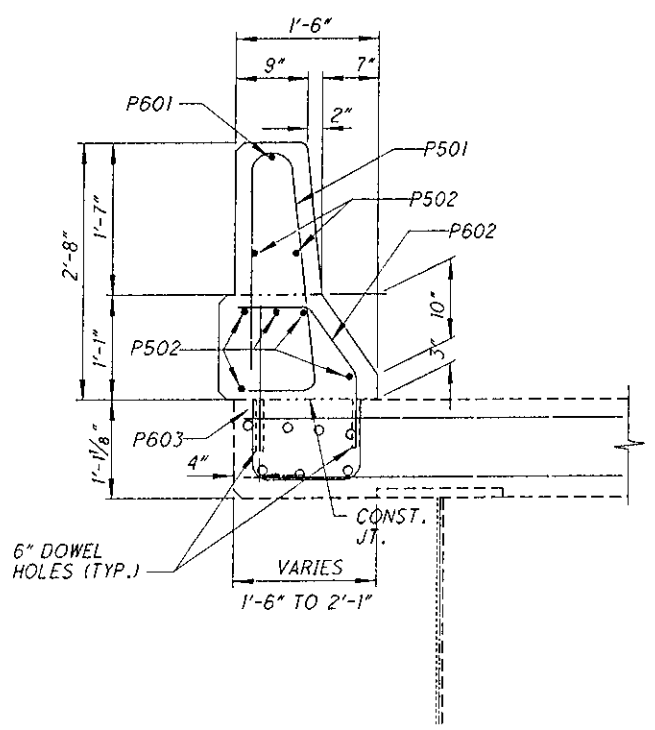
VARIES  
1'-6"  
TO 2'-1"



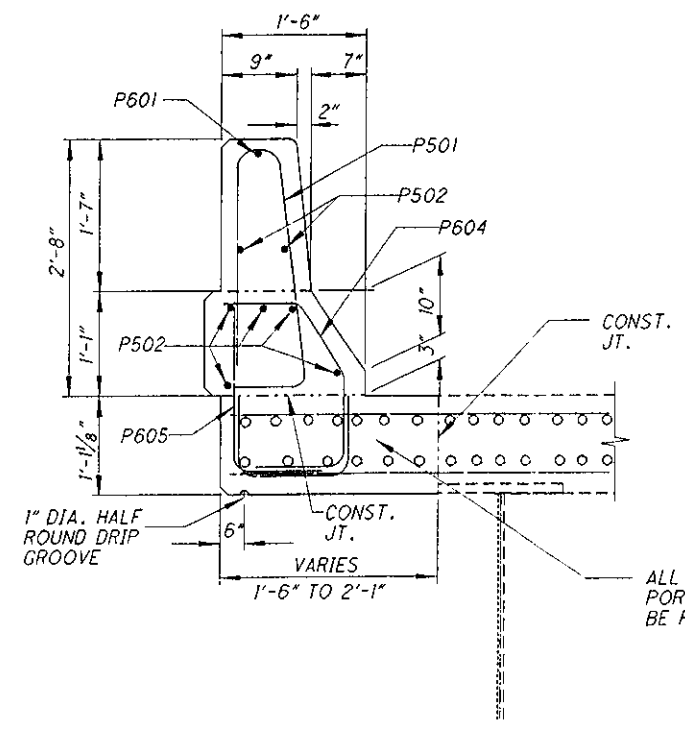
PROPOSED



ELEVATION

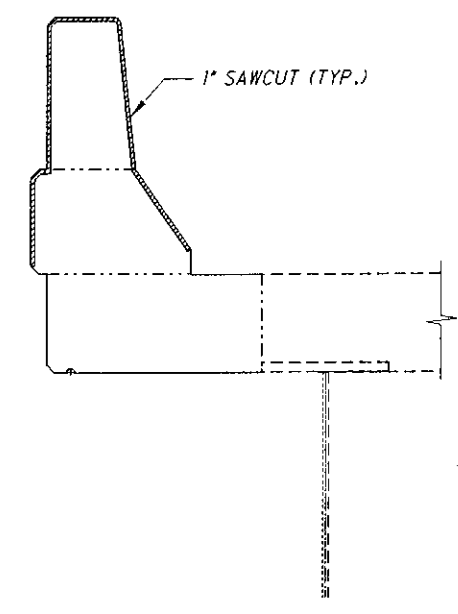


SECTION A-A  
PARAPET REPLACEMENT ONLY



SECTION B-B  
PARAPET AND DECK REPLACEMENT ONLY

ALL RE-STEEL ENCOUNTERED IN THE DECK PORTION OF THE REPLACEMENT SHALL BE PRESERVED IN PLACE.



SAWCUT DETAIL

LAP LENGTH  
NO. 5 - 3'-8"  
NO. 6 - 5'-0"

0070001.BP-1\_001.DWG (08/27/08) SCALE = 3/8" = 1'-0" (NO. 8 BAR)

PARAPET DETAILS  
BR. NO. GUE-70-0943A  
RAMP 'A' OVER WILLS CREEK

GUE-70-9.43

DESIGNED	JDR	CHECKED	TAG
DRAWN	RSD	REVIEWED	3001202
DATE	08/20/08	DTF	STRUCTURE FILE NUMBER
DESIGN AGENCY	OHIO DEPARTMENT OF TRANSPORTATION	DISTRICT	5