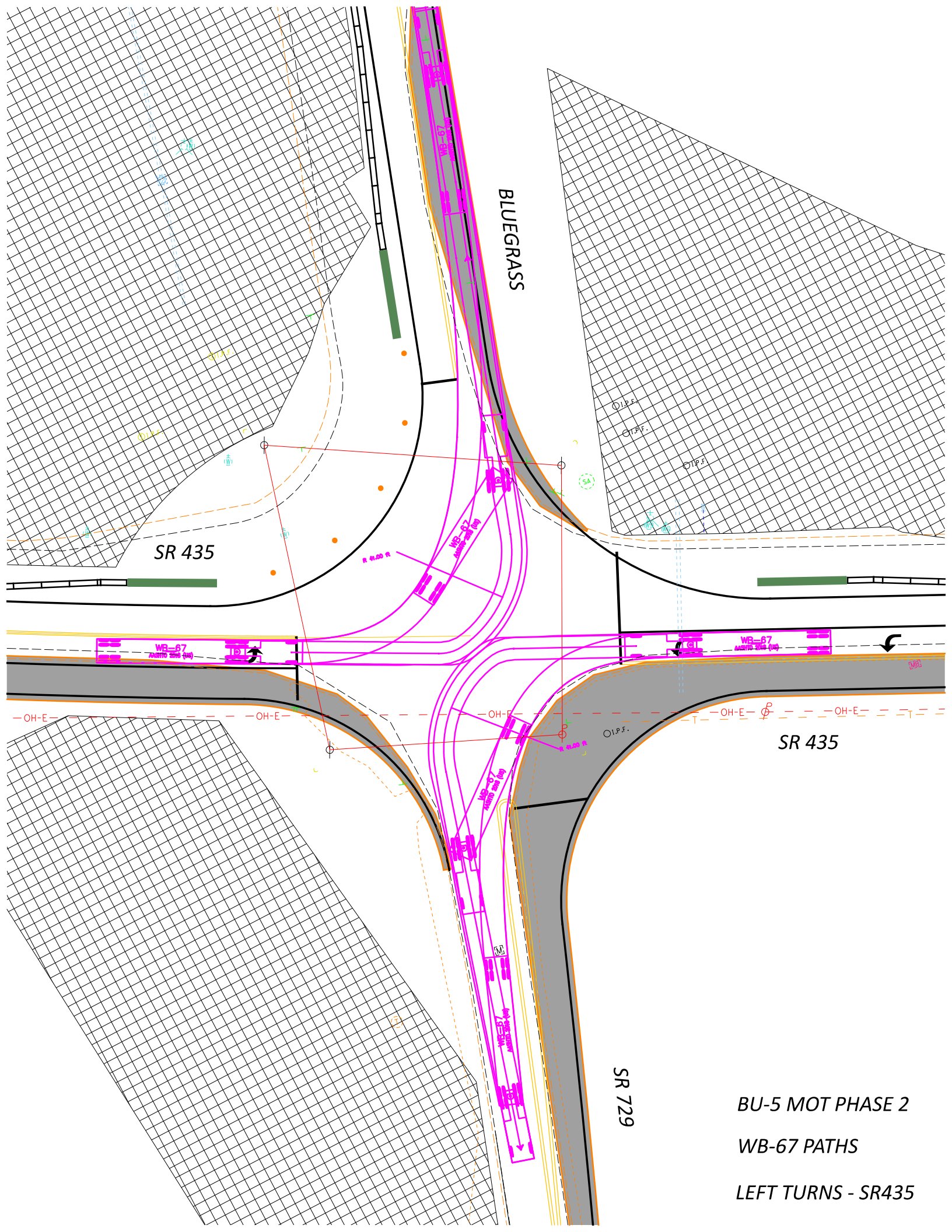


this violates the check vehicle design for collector to collector encroachment case B2 (A2 is preferred for signalized intersections)

BU-5 MOT PHASE 2

WB-67 PATHS

RIGHT TURNS



BLUEGRASS

SR 435

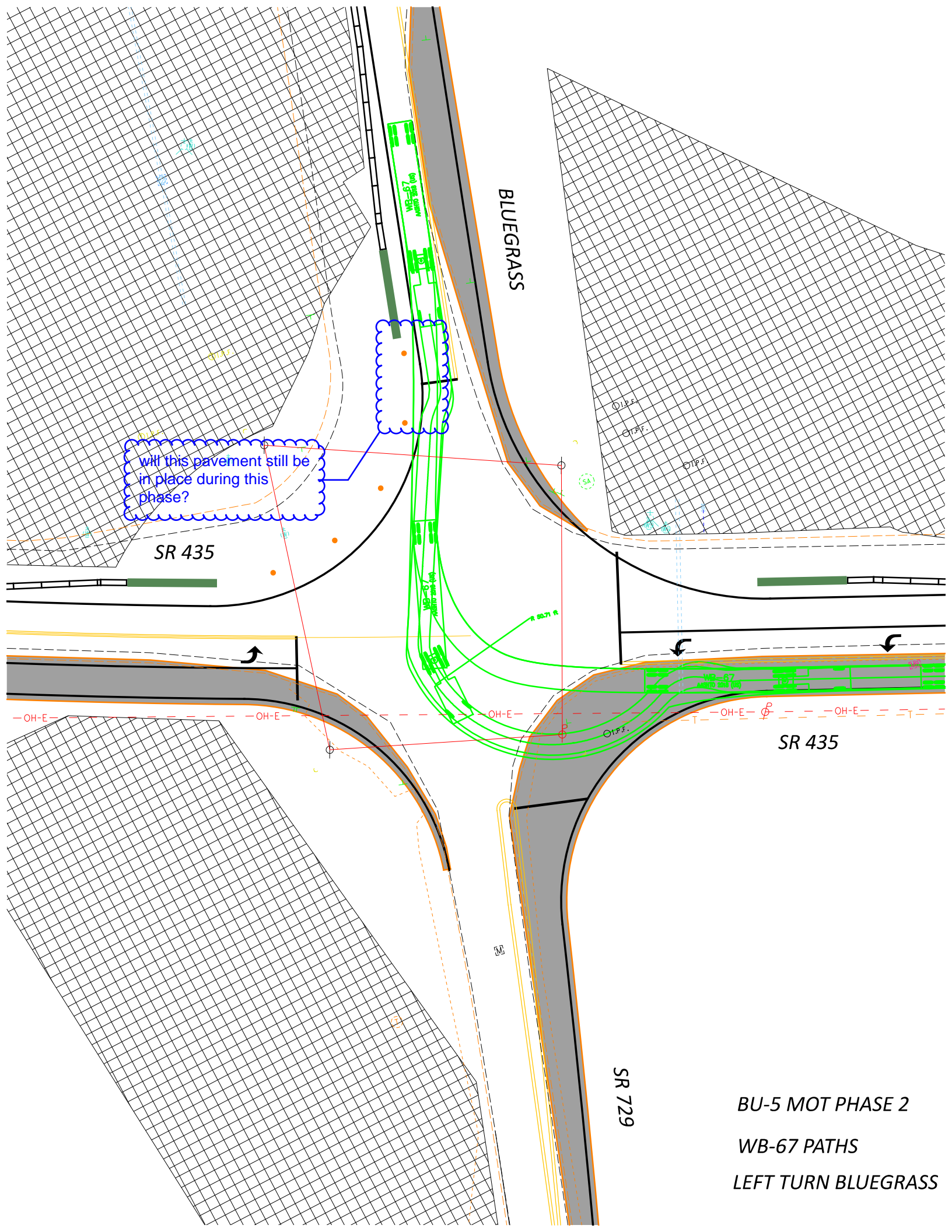
SR 435

SR 729

BU-5 MOT PHASE 2

WB-67 PATHS

LEFT TURNS - SR435



BLUEGRASS

Will this pavement still be in place during this phase?

SR 435

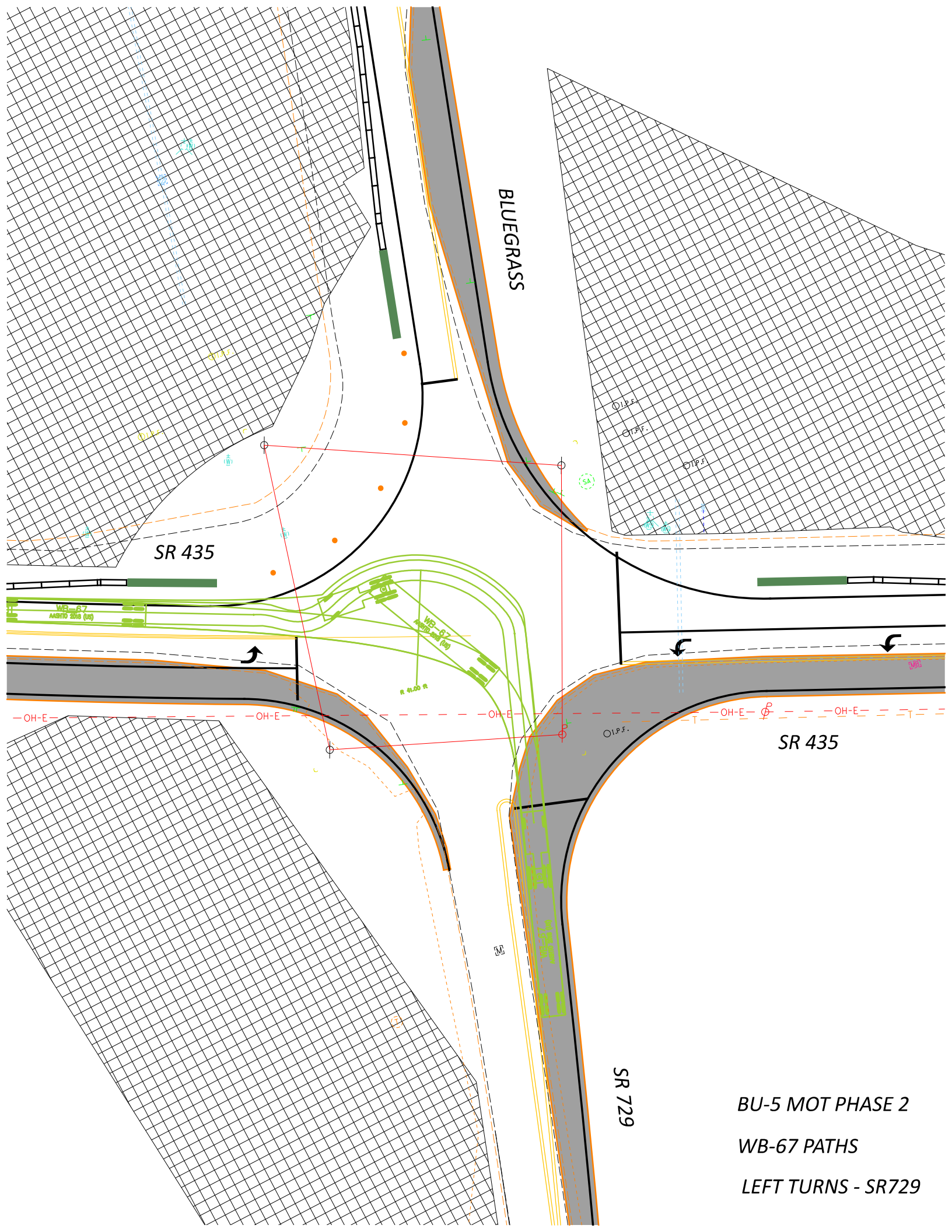
SR 435

SR 729

BU-5 MOT PHASE 2

WB-67 PATHS

LEFT TURN BLUEGRASS



BLUEGRASS

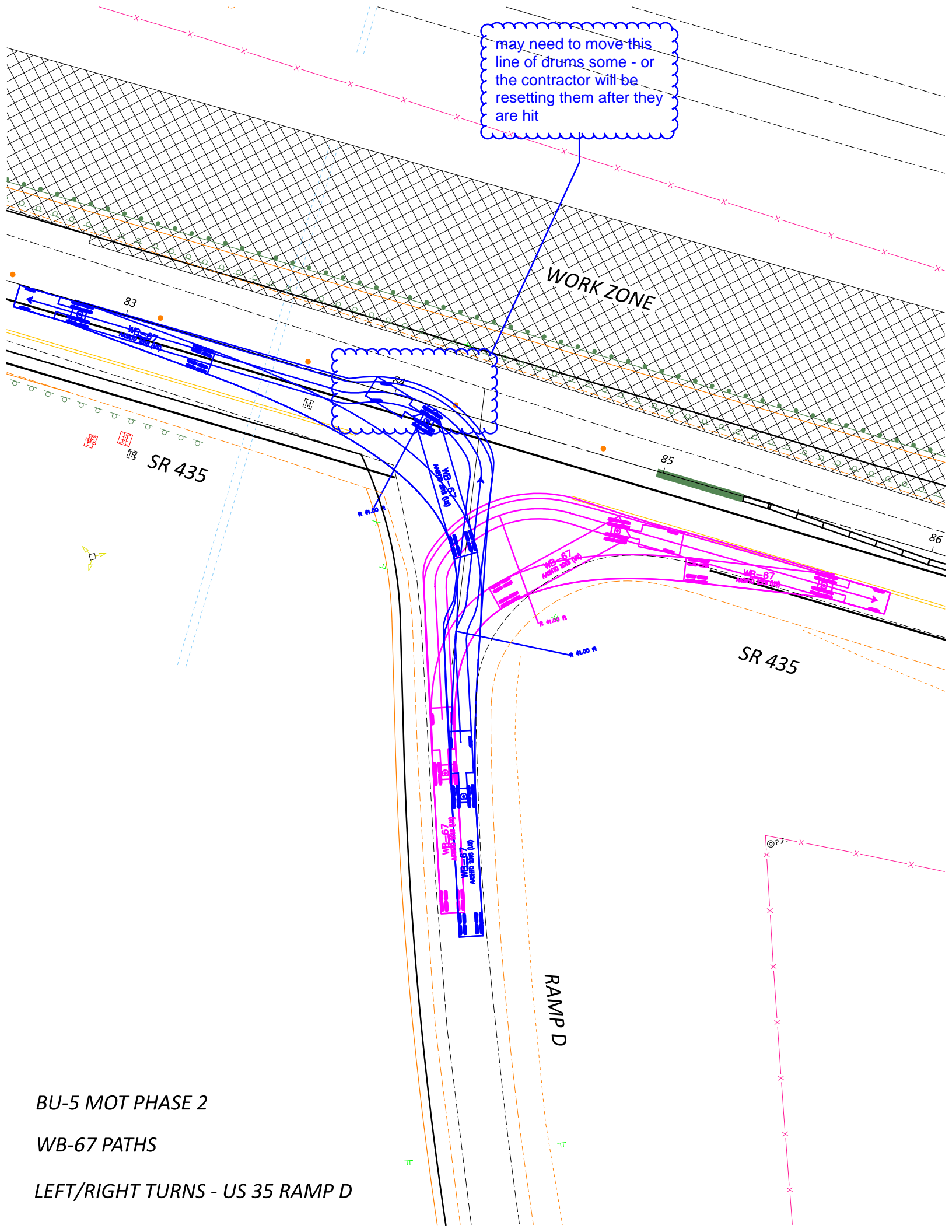
SR 435

SR 435

SR 729

BU-5 MOT PHASE 2
WB-67 PATHS
LEFT TURNS - SR729

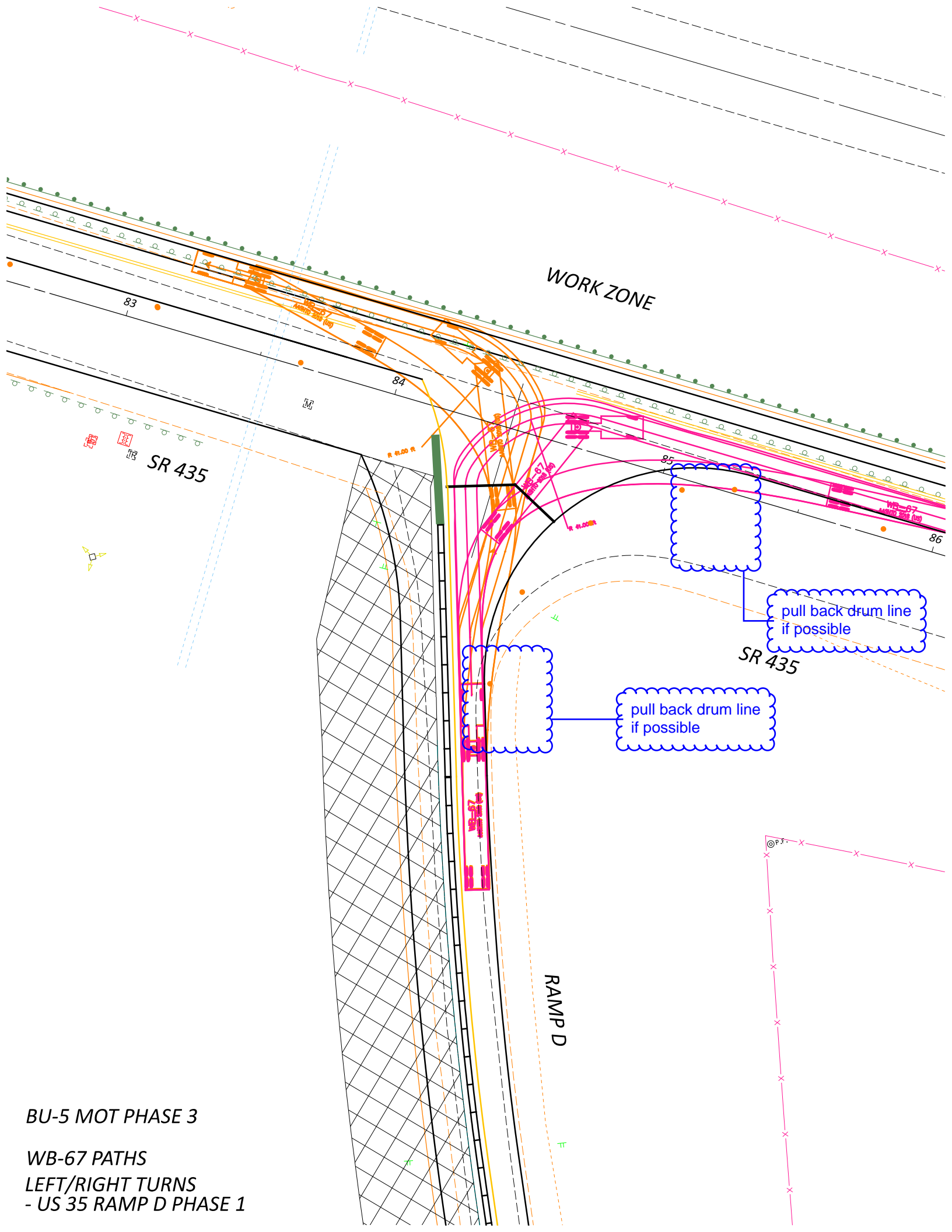
may need to move this line of drums some - or the contractor will be resetting them after they are hit



BU-5 MOT PHASE 2

WB-67 PATHS

LEFT/RIGHT TURNS - US 35 RAMP D



WORK ZONE

SR 435

SR 435

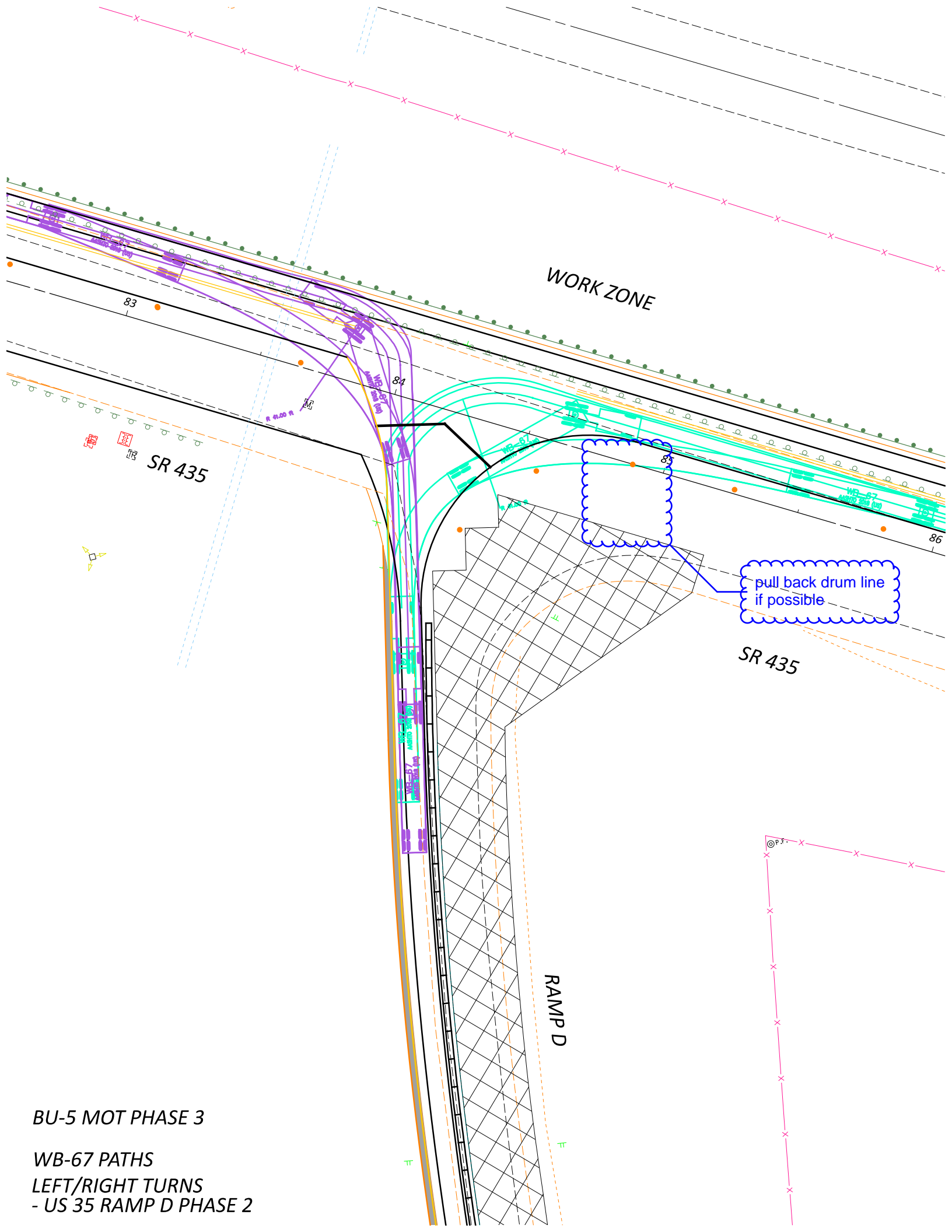
RAMP D

pull back drum line if possible

pull back drum line if possible

BU-5 MOT PHASE 3

WB-67 PATHS
LEFT/RIGHT TURNS
- US 35 RAMP D PHASE 1



WORK ZONE

SR 435

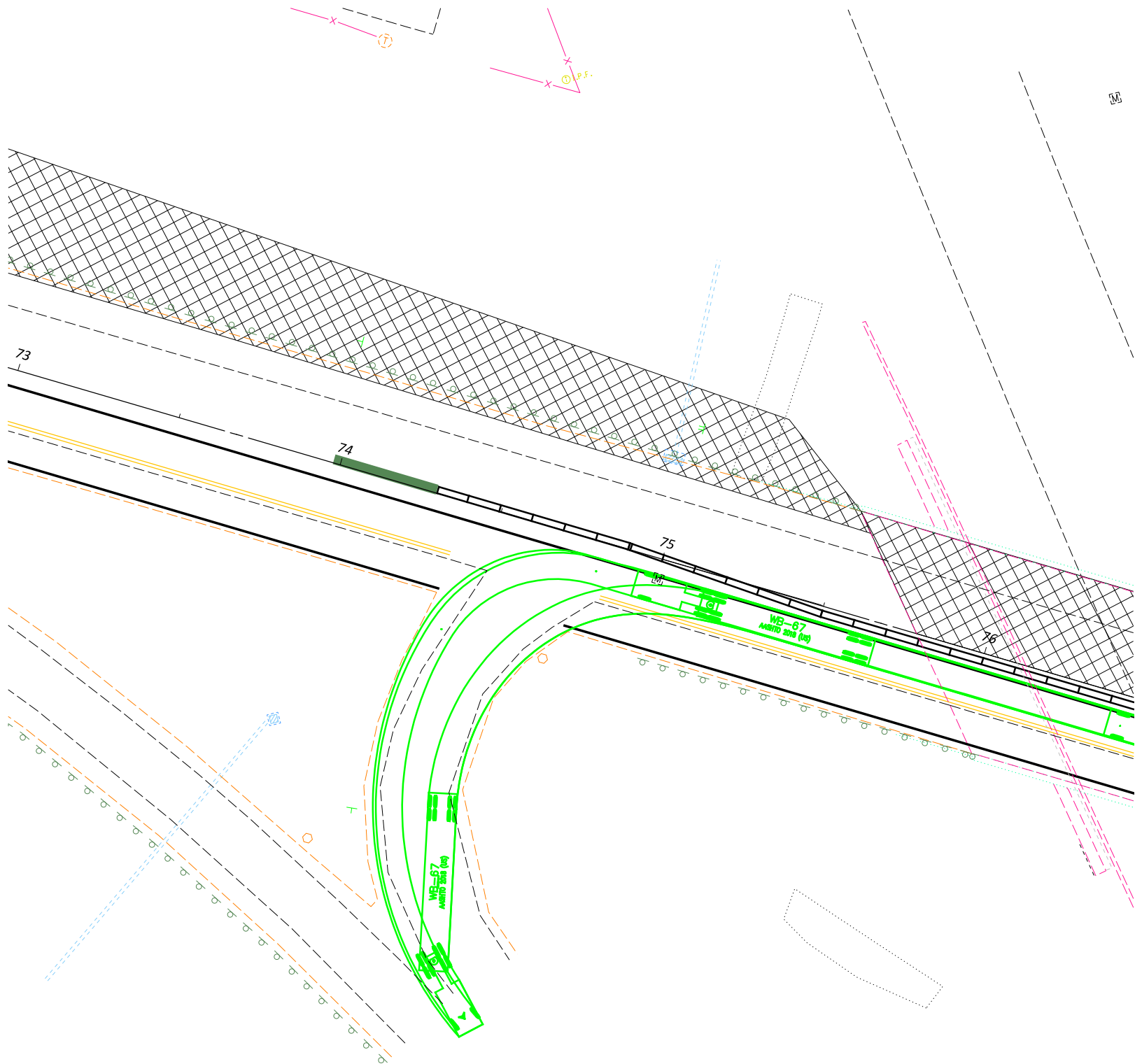
SR 435

RAMP D

pull back drum line if possible

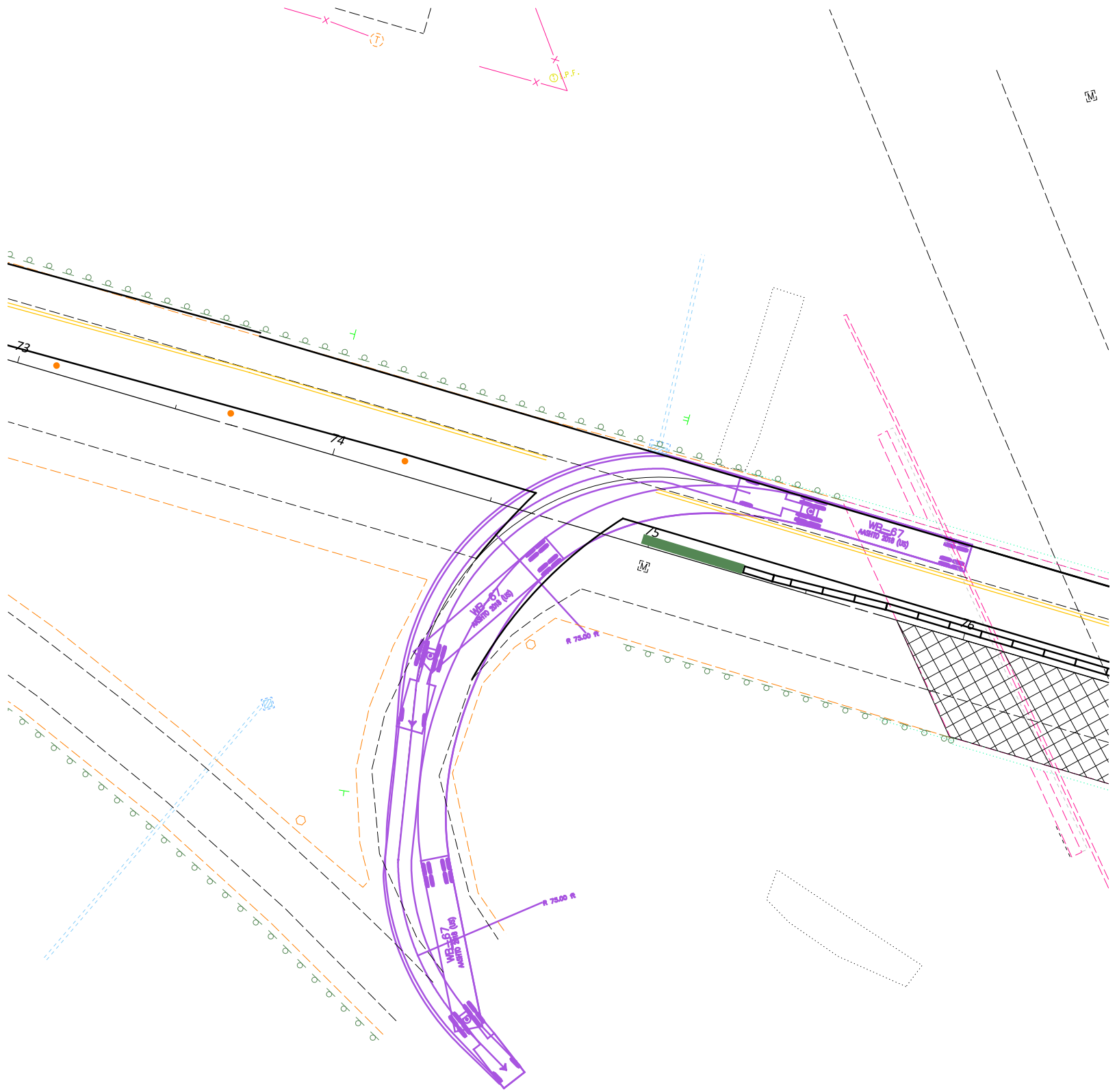
BU-5 MOT PHASE 3

WB-67 PATHS
LEFT/RIGHT TURNS
- US 35 RAMP D PHASE 2



BU-5 MOT PHASE 2

**WB-67 PATHS
LEFT TURN
- US 35 RAMP C**



BU-5 MOT PHASE 3

**WB-67 PATHS
LEFT TURN
- US 35 RAMP C**