

Recommended Safety Countermeasures:

SR 752 and Walnut Creek Pike:

- Convert intersection to a single lane roundabout

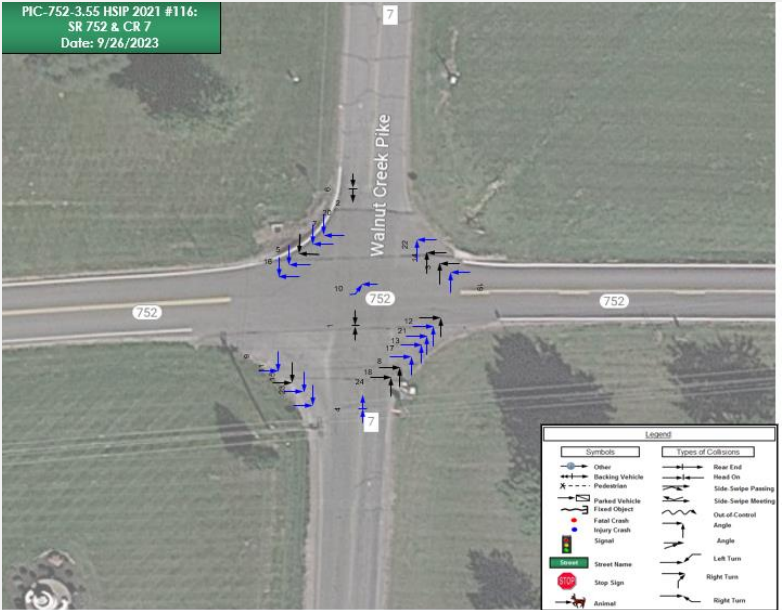
Crash Summaries:

2018-2022

- 2 Serious Injury Crashes
- Angle crashes (88%)
- 63% injury crashes



PIC-752-3.55 HSIP 2021 #116:
SR 752 & CR 7
Date: 9/26/2023



Recent Improvements:

Since 2015

- Dual intersection ahead signs with road names
- Dual Stop Signs with Cross Traffic Does Not Stop Plaques
- Dual Stop Ahead Signs



Proposed Improvements:



Project Scoring:

Category	Scoring Value	Points Awarded	Points Possible
Ratio of Observed Fatal and Serious Injuries to Observed Total Crashes	0.08	16	30
Percentage of the Potential for Safety Improvement to Total Expected Crashes	7.22%	4	20
Relative Severity Index	60,205	20	20
Equivalent Property Damage Only Index	6.69	20	20
Location Equity Measure	1.00%	0	10
Totals		60	100

Project Funding:

Project Phase	Fiscal Year	Other Funds	New Safety	Total
Safety Study	2024			\$ -
Environmental/PE	2026		\$ 414,500	\$ 414,500
Detailed Design	2027		\$ 210,000	\$ 210,000
ROW/Utilities	2028		\$ 100,000	\$ 100,000
Construction	2029		\$ 3,775,500	\$ 3,775,500
Totals		\$-	\$ 4,500,000	\$ 4,500,000

(Costs included in HSIP Application)

Project Performance:

PSI- 0.27

Benefit Cost Ratio – 0.78