

Recommended Safety Countermeasures:

SR 203 and SR 739:

- Convert intersection to a single lane roundabout



Safety Ranking:

**Rank # 257: 2024 ODOT Safety
Priority List – Rural
Intersections**

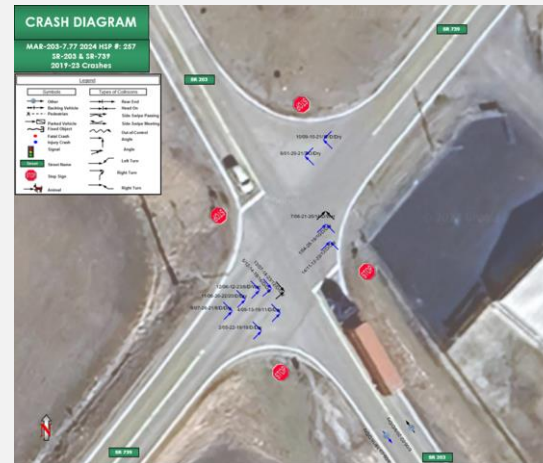
Project Performance:

**Benefit Cost Ratio – 0.54
1.1 Crashes Per Year Annual
Crash Reduction**

Crash Summaries:

SR 739 intersection (2019-23)

- 79% injury crashes
- 2 serious injuries
- Angle crashes (86%)
- 2 sideswipe crashes



Proposed Improvements:

SR-739/SR-203 ROUNDABOUT CONCEPT PLAN



Project Funding:

Project Phase	Fiscal Year	Other Funds	New Safety	Total
Environmental/PE	2026		\$ 400,000	\$ 400,000
Detailed Design	2028		\$ 300,000	\$ 300,000
ROW/Utilities	2027		\$ 300,000	\$ 300,000
Construction	2029		\$ 2,553,444	\$ 2,553,444
Totals			\$ 3,553,444	\$ 3,553,444

(Costs included in HSIP Application)