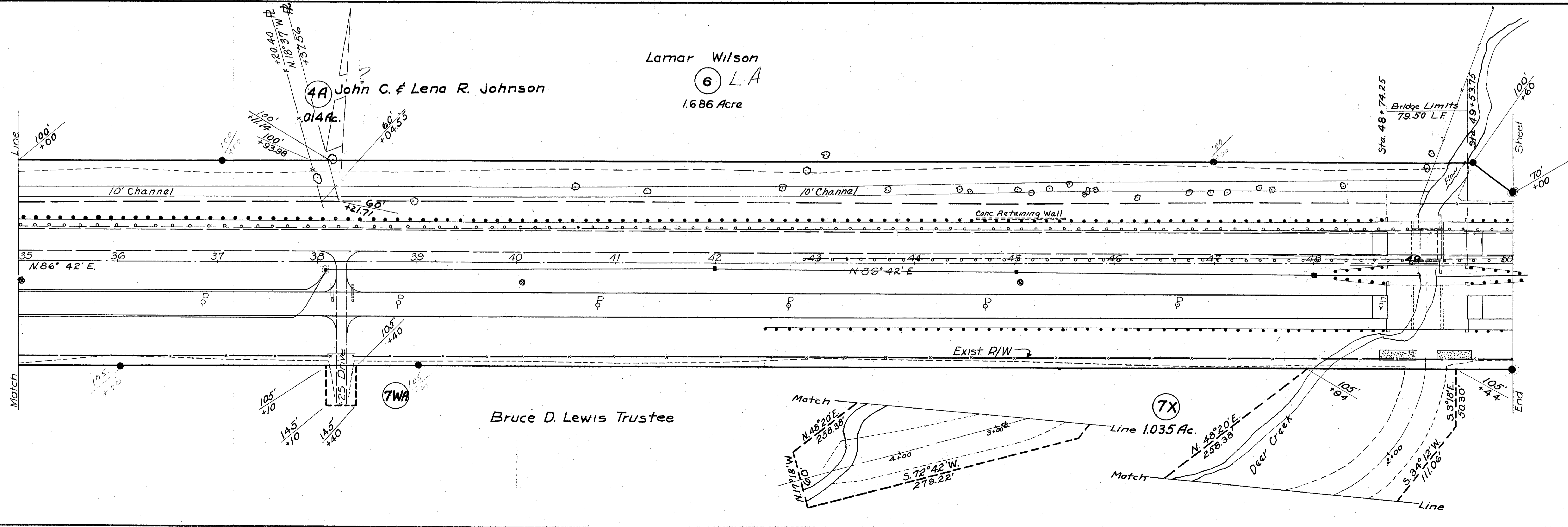
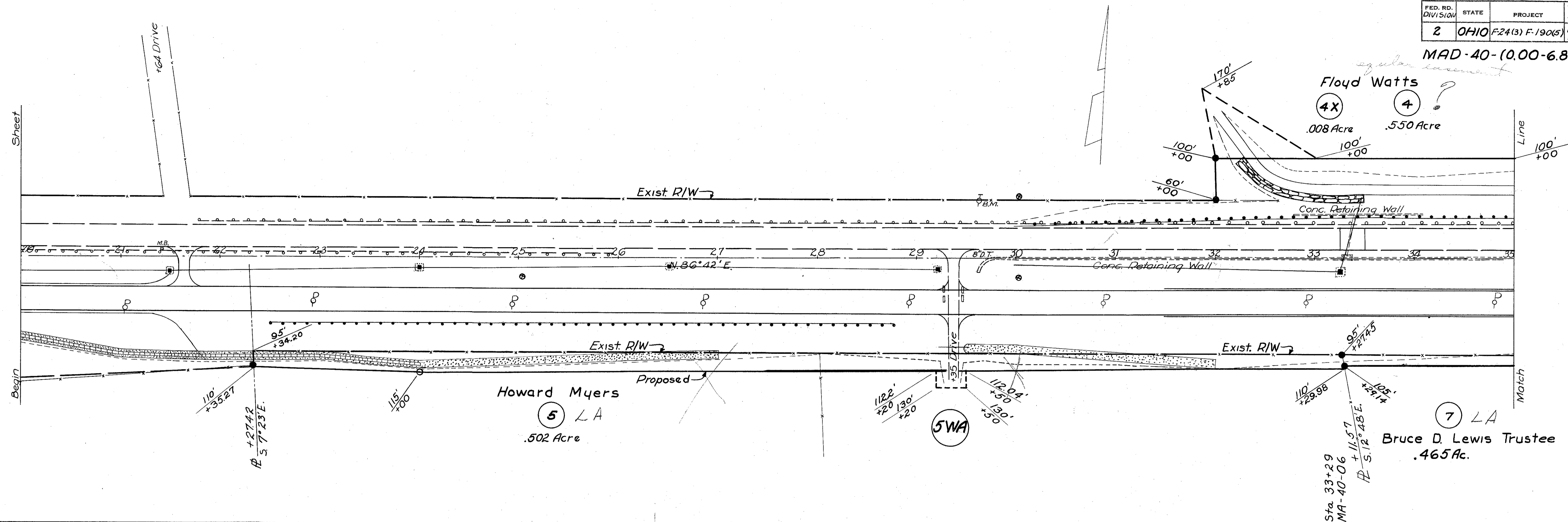


3 Limited Access Recorded Vol. 246, Pg. 618-19
 Points of Access right of stations 6+38,
 7+00, 10+95, and 17+30

● - R/W MONUMENTS
 215-79 Added recording data
 Rev. 6/1/50

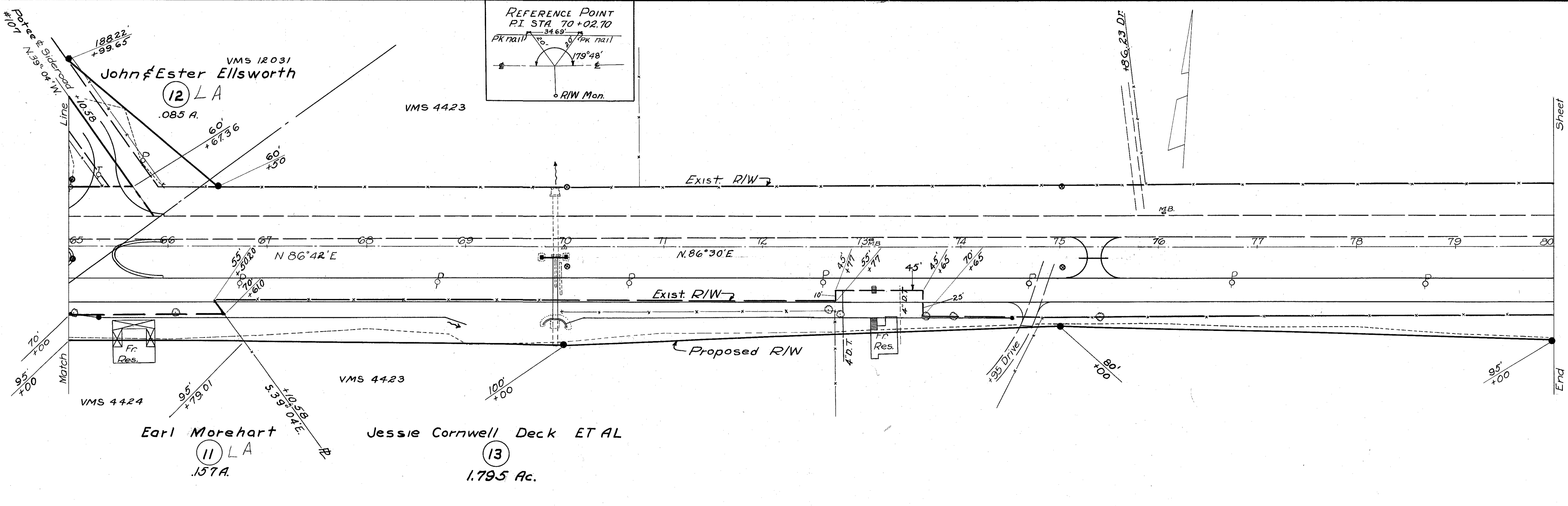
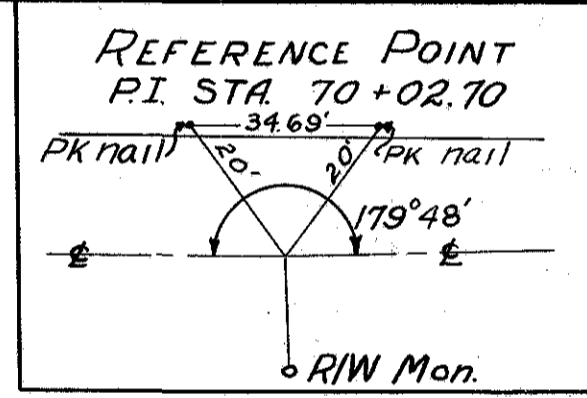
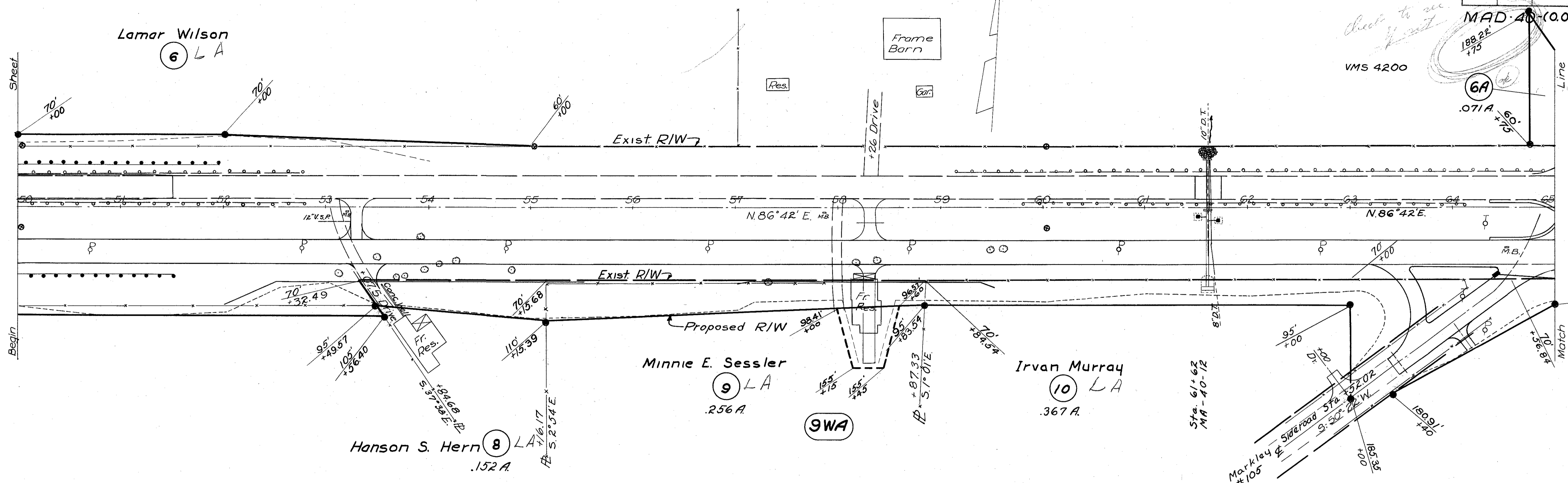
MAD-40-(0.00-6.84)

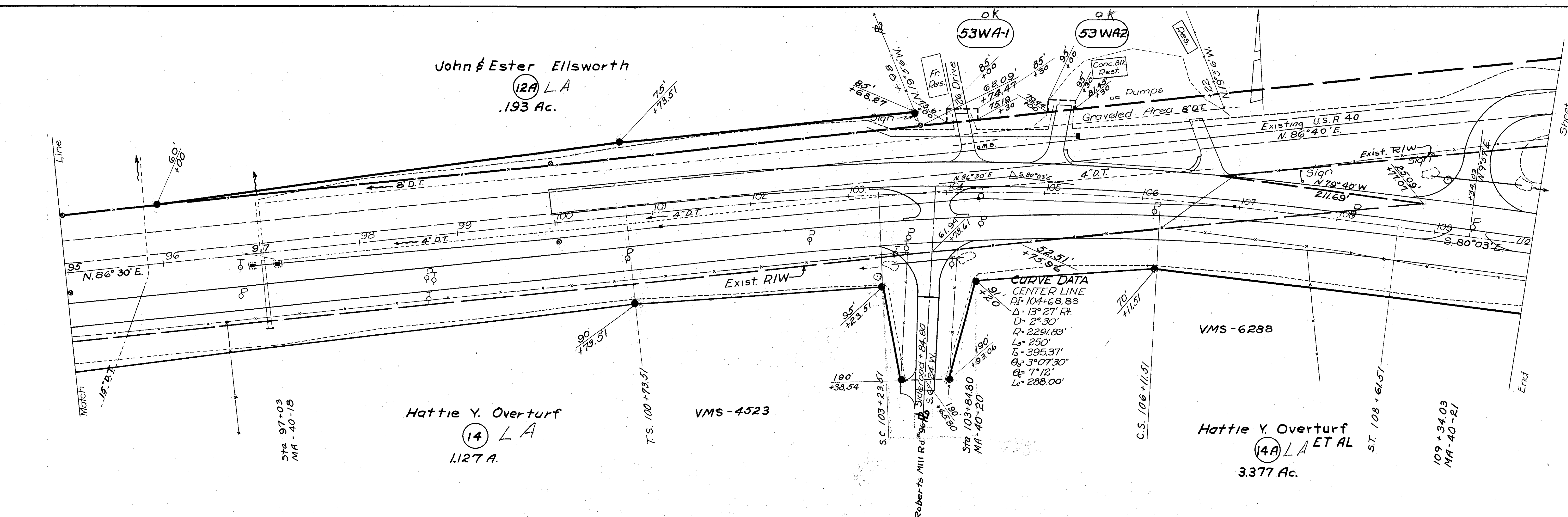
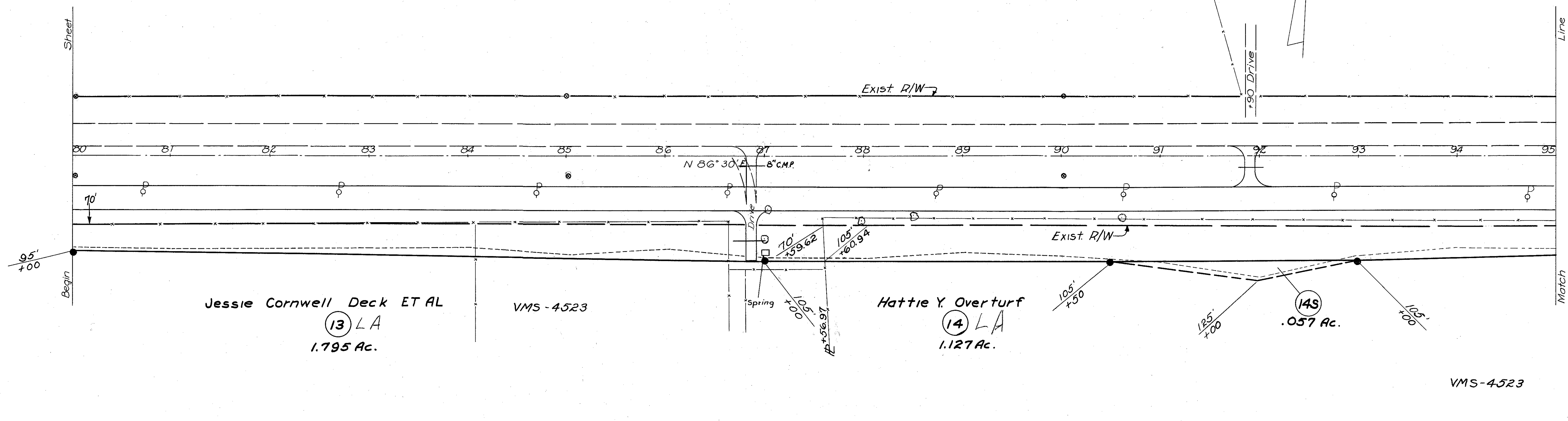


STA 20+00 TO STA 50+00

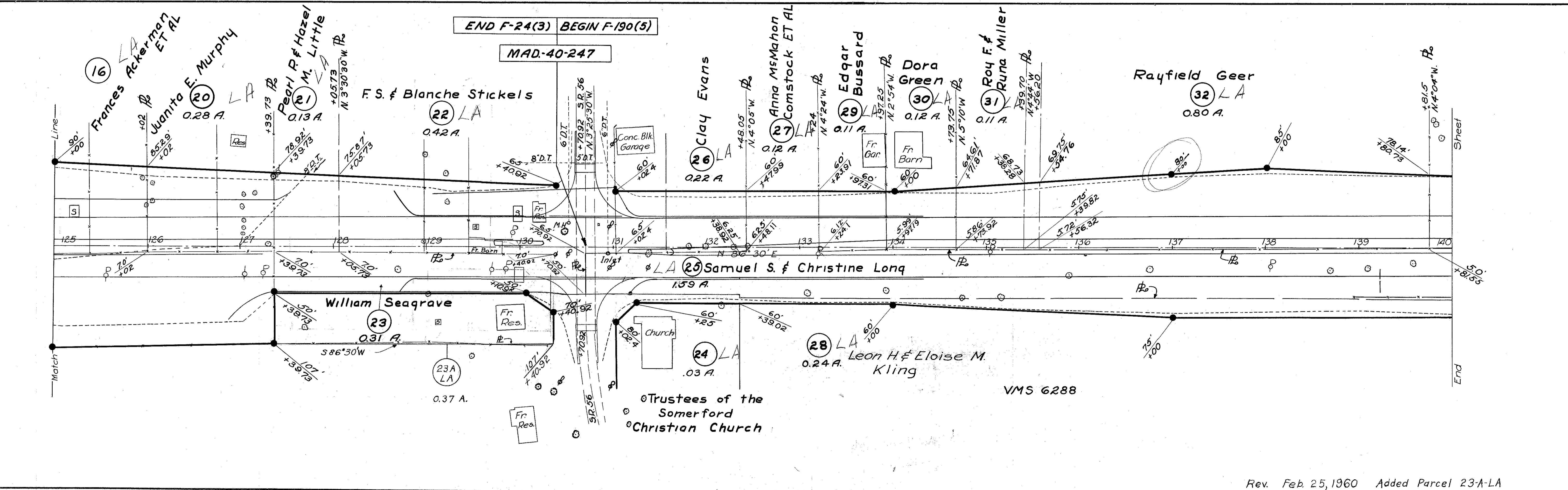
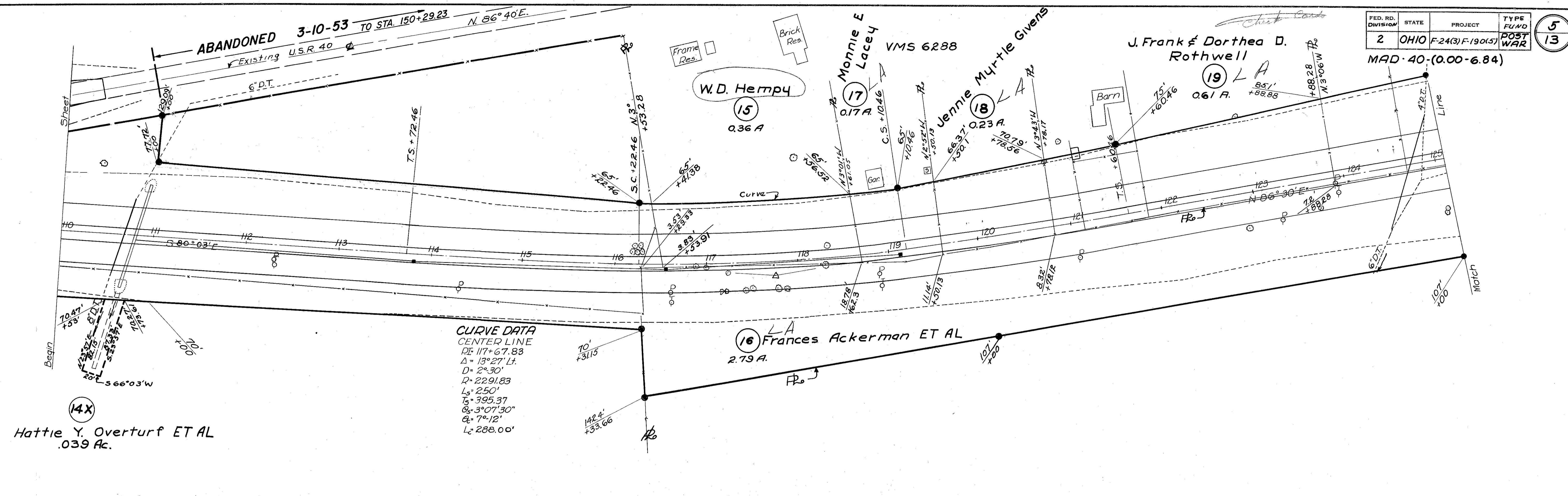
check to see
if right

MAD-40 (0.00-6.84)





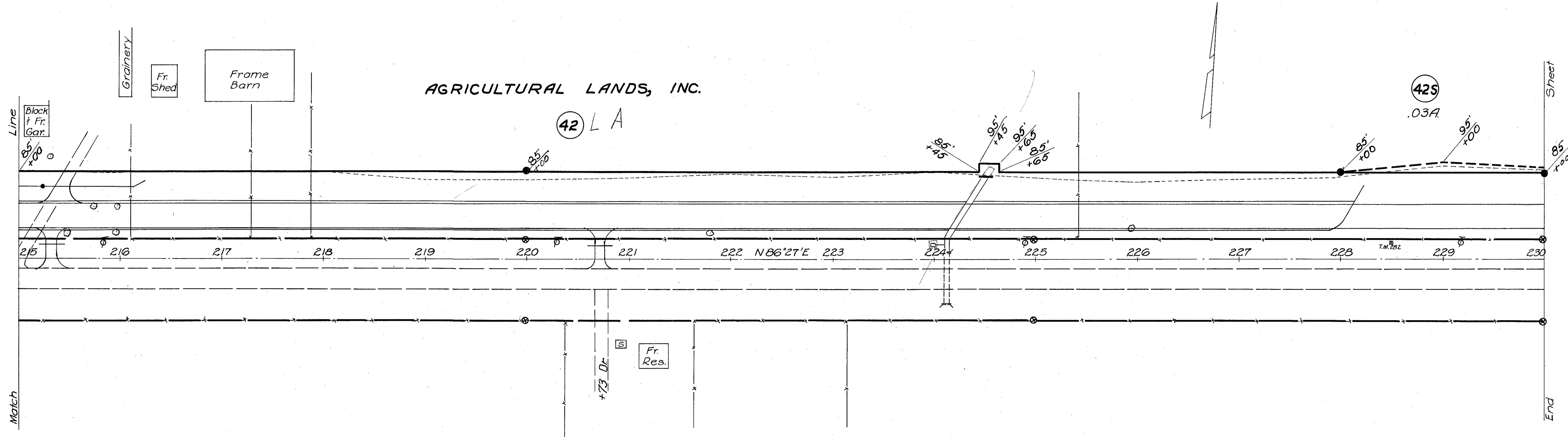
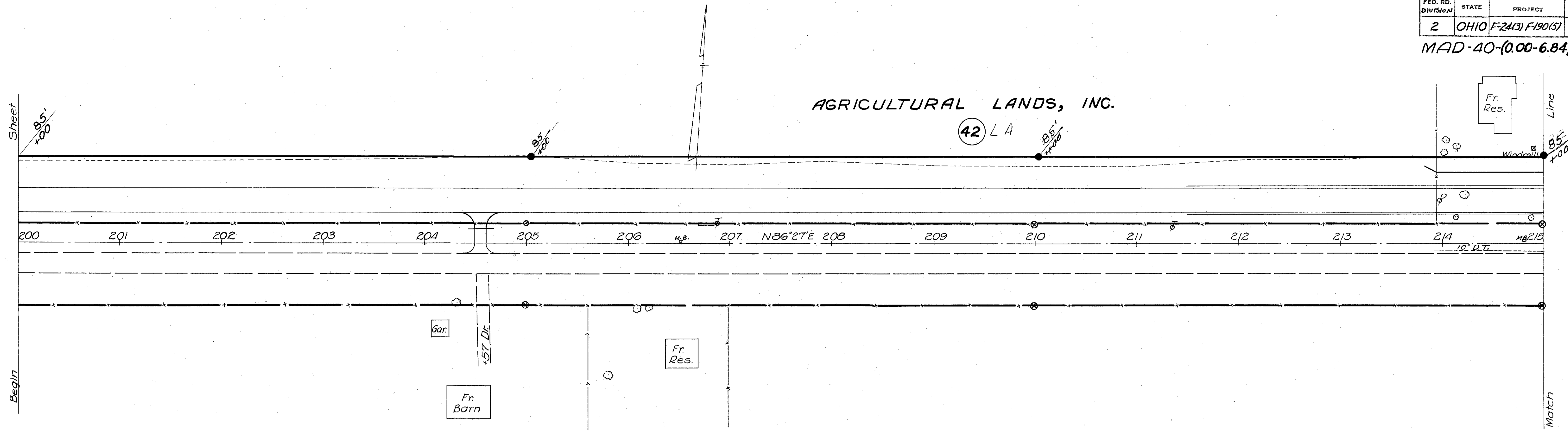
MAD-40-(0.00-6.84)



FED. RD. DIVISION	STATE	PROJECT	TYPE FUND
2	OHIO	F-24(3) F-190(5)	POST WAR

8
13

MAD-40-(0.00-6.84)



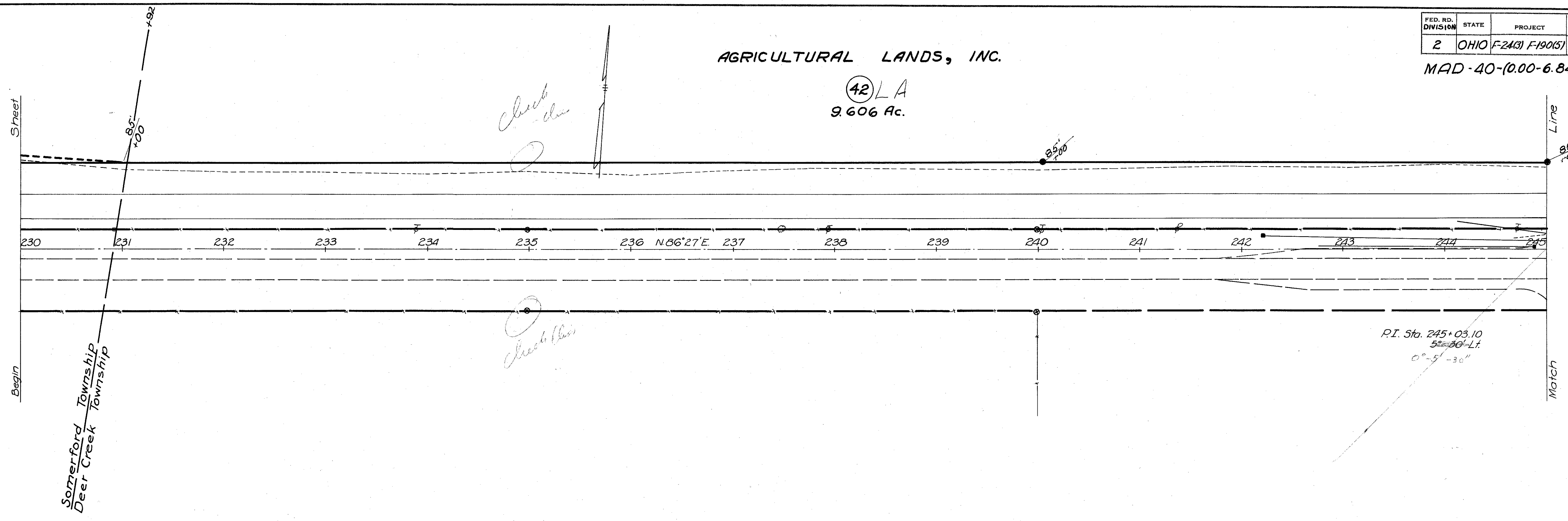
STA 200+00 TO STA 230+00

FED. RD. DIVISION	STATE	PROJECT	TYPE FUNDS	9
2	OHIO	F-243 F-19015	POST WAR	13

MAD-40-(0.00-6.84)

AGRICULTURAL LANDS, INC.

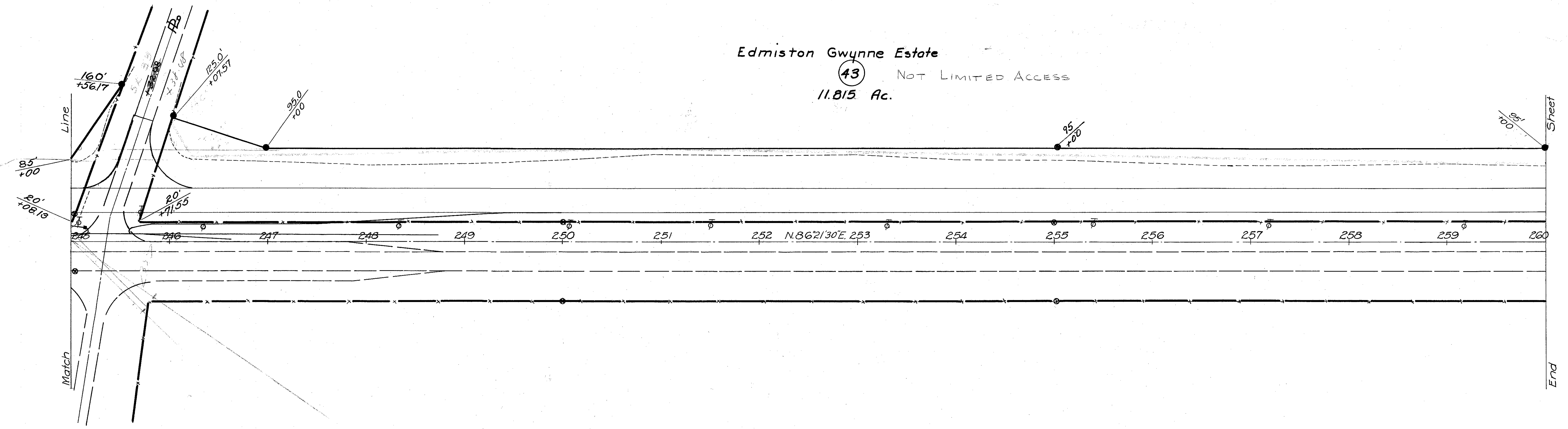
(42) LA
9.606 Ac.



P.I. Sta. 245+03.10
52=80-Lt.
0°-51'-36"

Edmiston Gwynne Estate

(43) NOT LIMITED ACCESS
11.815 Ac.



STA 230+00 TO STA 260+00

FED. RD. DIVISION	STATE	PROJECT	TYPE FUNDS
2	OHIO	F-24(3) F-190(3)	POST WAR

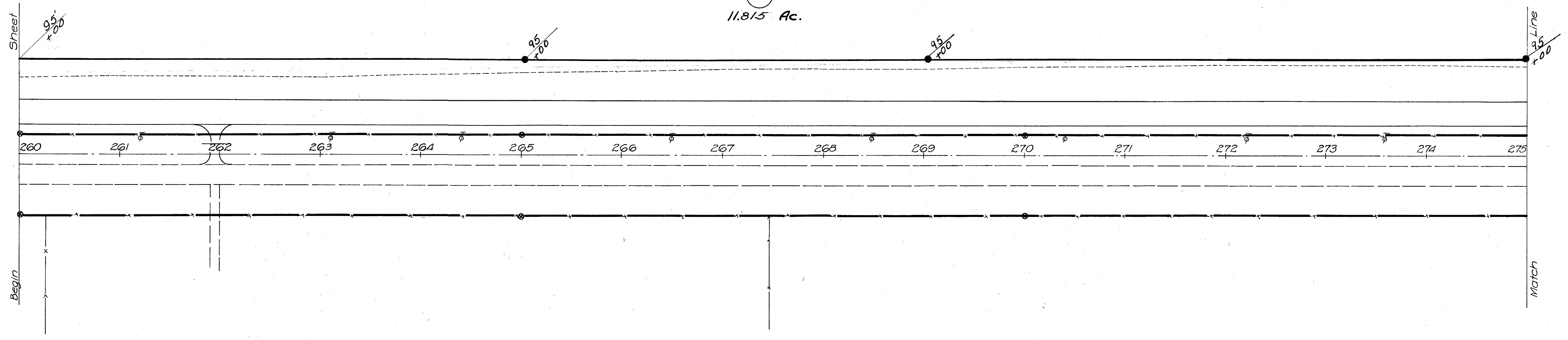
10
13

MAD-40-(0.00-6.84)

Edmiston Gwynne Estate

43

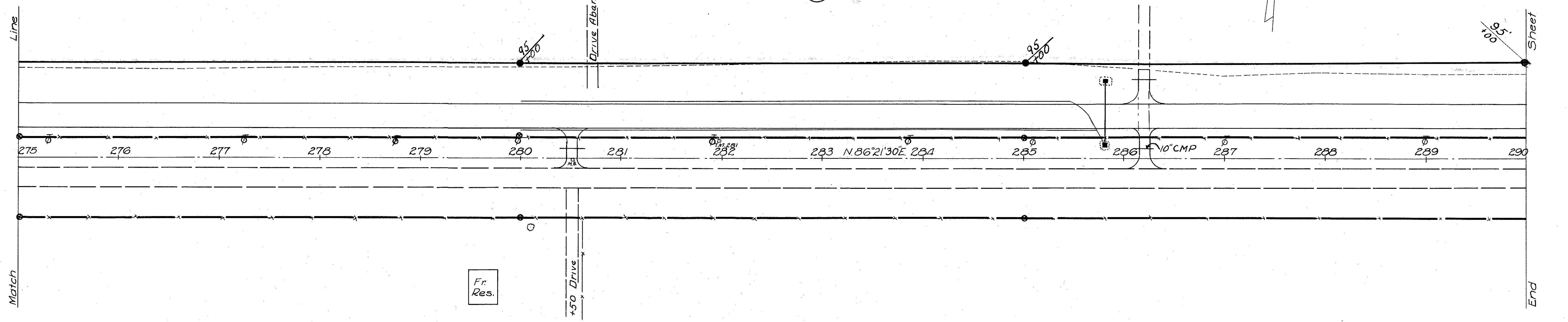
11.815 Ac.



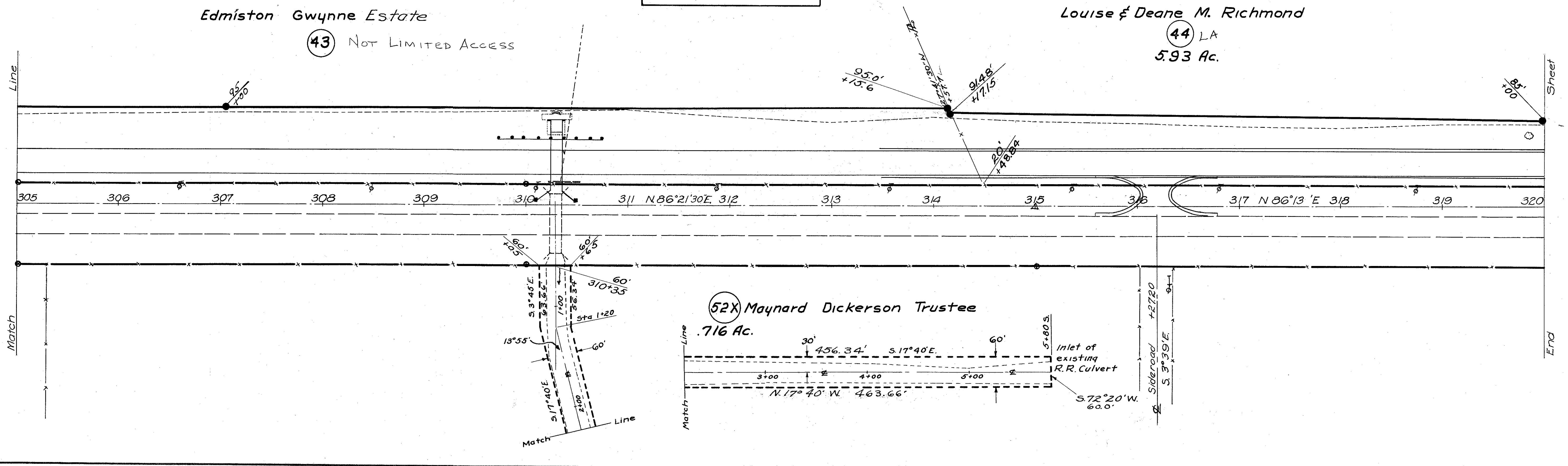
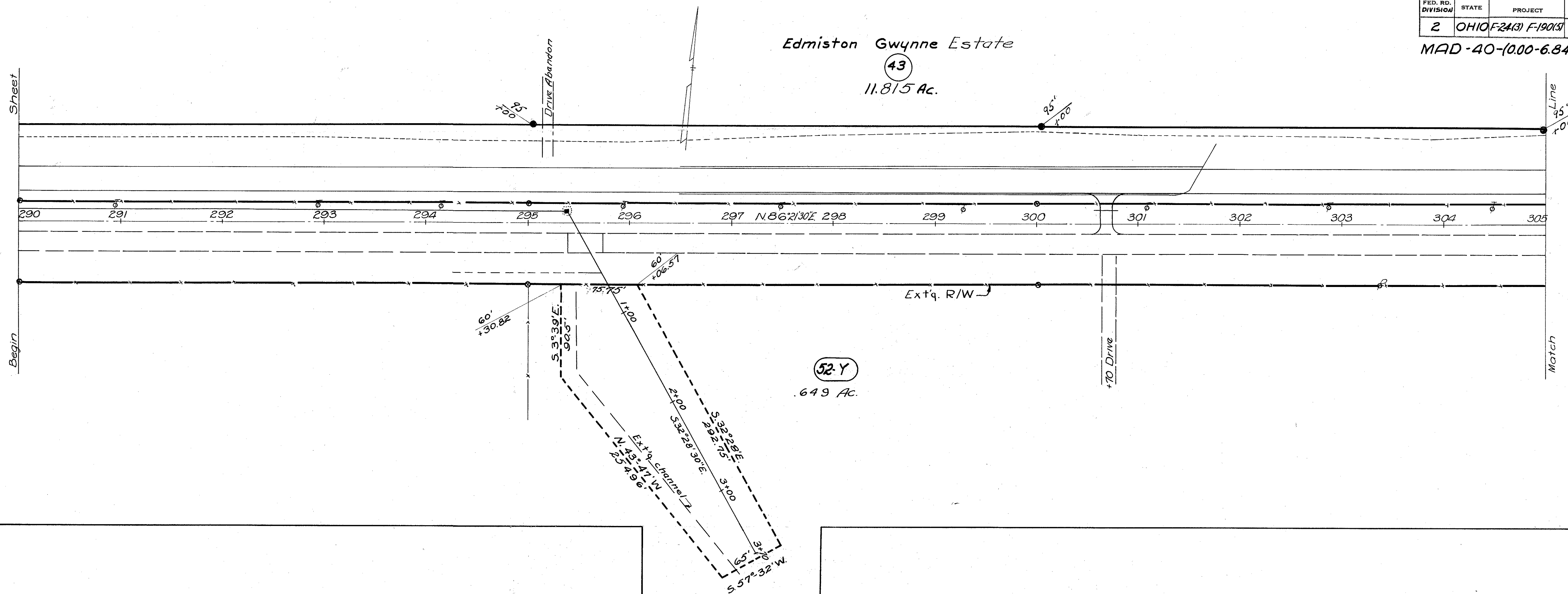
Edmiston Gwynne Estate

43

NOT LIMITED ACCESS



STA 260+00 TO STA 290+00

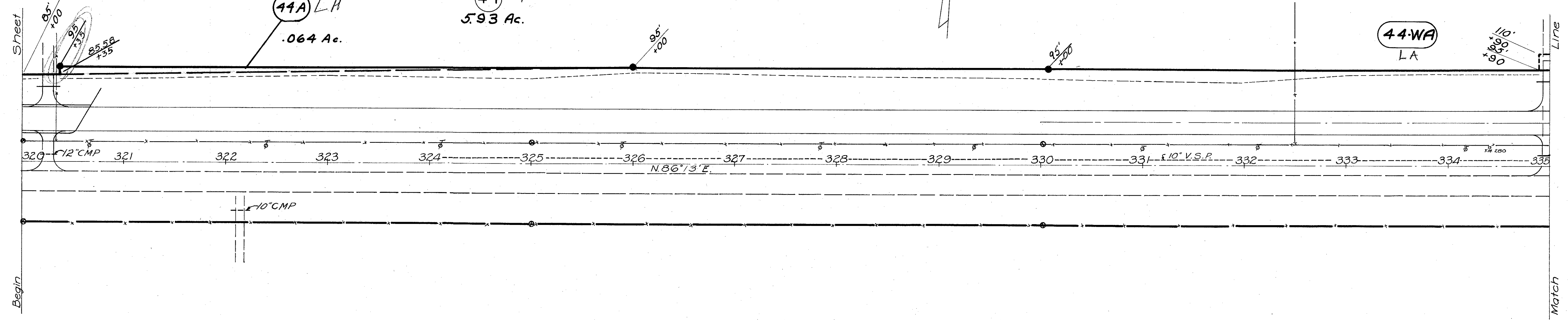


Louise & Deane M. Richmond

44A LA
.064 Ac.

44 LA
5.93 Ac.

44-WA LA



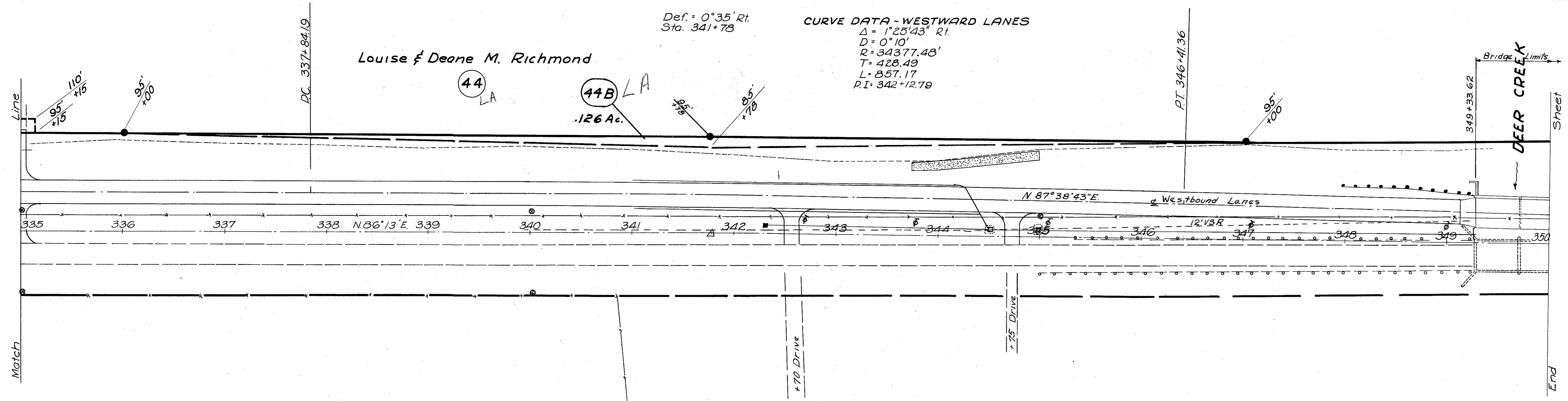
Louise & Deane M. Richmond

44 LA

44B LA
.126 Ac.

Def. = 0°35' Rt.
Sta. 341+78

CURVE DATA - WESTWARD LANES
 $\Delta = 1^{\circ}25'43''$ Rt.
 $D = 0^{\circ}10'$
 $R = 34377.48'$
 $T = 428.49$
 $L = 857.17$
 $P.I. = 342+12.79$



FED. RD. DIVISION	STATE	PROJECT	TYPE FUNDS
2	OHIO	F-2A(3) F-190(5)	POST WAR

13
13

EQUATION STATION
Sta 363+99.70 back = Sta 364+00 Ahead

MAD-40-(0.00-6.84)

Herbert H. & Pearl Harper
45 LA
1.38 Ac.

Trustees
M.E. Church
Parsonage
50S

MAD-40-6.89
END PROJECT
STA 363+99.70
F-190(5)
Herbert & Pearle
Harper
51-S-01Ac.
Brick Res

END WORK
STA 364+57

Walter R. Dillon
46 LA
.60 Ac.

47WA
150
+36.5

Walter R Dillon
47S
.05 Ac.

48S
.02 Ac.
L.E. & Sylvia
Tracy

49S
.02 Ac.
Emeru
Dillon

