

Centerline Stationing and offset
at GROUND from Cla-70-29.19
Mad-70-0.00

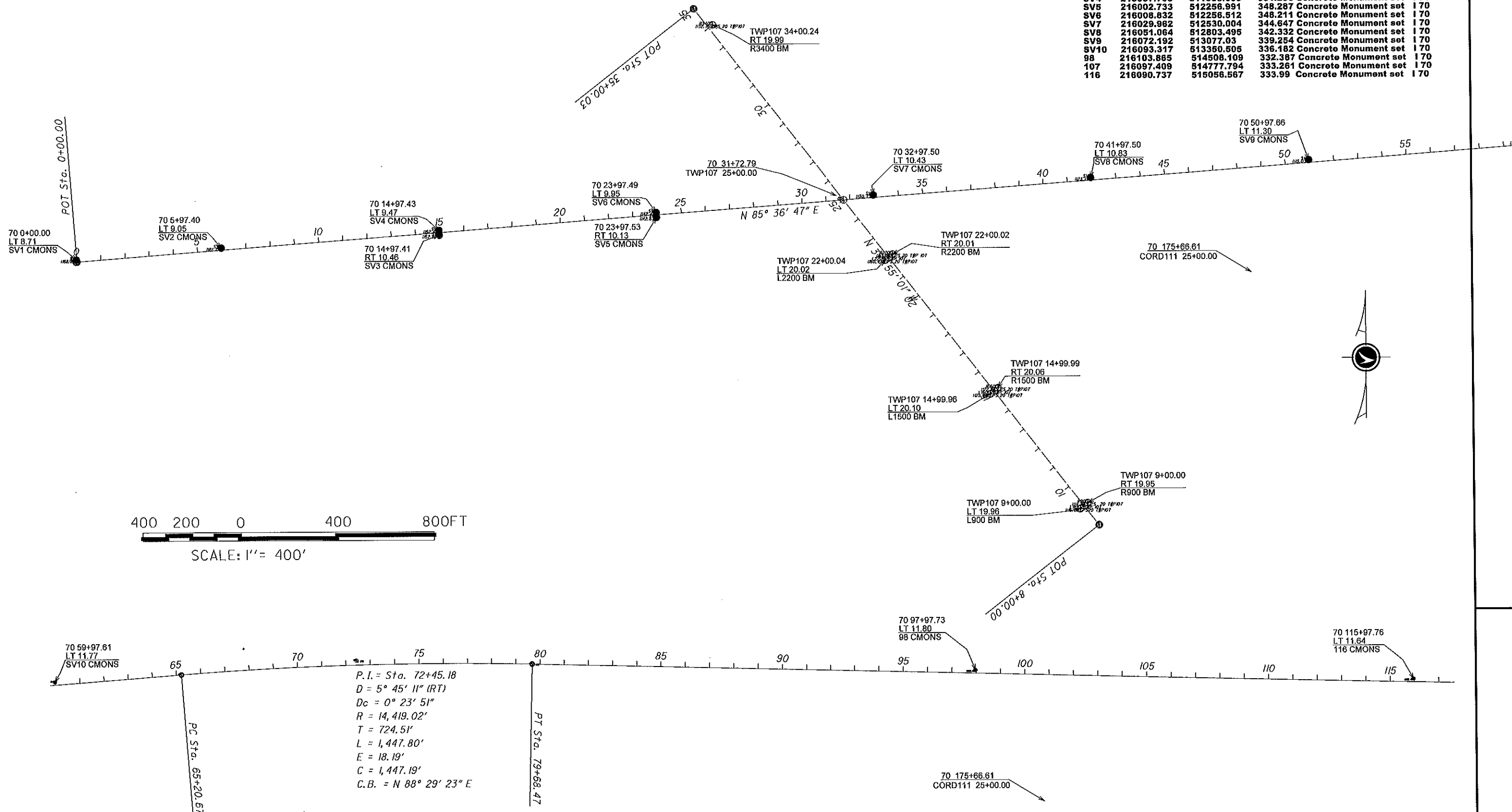
Grid Coordinates are based
off of NAD 83 CORS 96 adjustment
Elevation from Geoid 2003 NADV88
Ohio South Zone

Madison County - Interstate 70 0.00-9.92

Centerline Monumentation Summerford and Deer Creek Township

Coordinate list on GRID in METRIC,
conversion point AL926

L900	215635.437	512787.221	340.06	Concrete Monument Found TWP 107
L1500	215779.666	512674.819	342.31	Concrete Monument Found TWP 107
L2200	215948.01	512543.717	350.666	Concrete Monument Found TWP 107
R900	215842.909	512796.818	339.835	Concrete Monument Found TWP 107
R1500	215787.194	512684.469	342.21	Concrete Monument Found TWP 107
R2200	215955.501	512553.346	350.854	Concrete Monument Found TWP 107
R3400	216244.084	512328.545	345.266	Concrete Monument Found TWP 107
SV1	215952.53	511527.561	356.051	Concrete Monument set I 70
SV2	215966.594	511709.505	354.091	Concrete Monument set I 70
SV3	215981.648	511983.465	351.319	Concrete Monument set I 70
SV4	215987.705	511983.003	351.256	Concrete Monument set I 70
SV5	216002.733	512256.991	348.287	Concrete Monument set I 70
SV6	216008.832	512256.512	348.211	Concrete Monument set I 70
SV7	216029.982	512530.004	344.647	Concrete Monument set I 70
SV8	216051.064	512803.495	342.332	Concrete Monument set I 70
SV9	216072.192	513077.03	339.254	Concrete Monument set I 70
SV10	216093.317	513350.505	336.182	Concrete Monument set I 70
98	216103.865	514508.109	332.387	Concrete Monument set I 70
107	216097.409	514777.794	333.261	Concrete Monument set I 70
116	216090.737	515056.567	333.99	Concrete Monument set I 70



15-JAN-2009 2:25PM kaller
 Design
 i:\users\kaller\COUNTIES\MAD\170\centerline\70 0+00 to US42\Newmonumentation.dgn

CALCULATED
 CHECKED
 1
 4

Madison County - Interstate 70 0.00-9.92

Centerline Monumentation

Summerford and Deer Creek Township

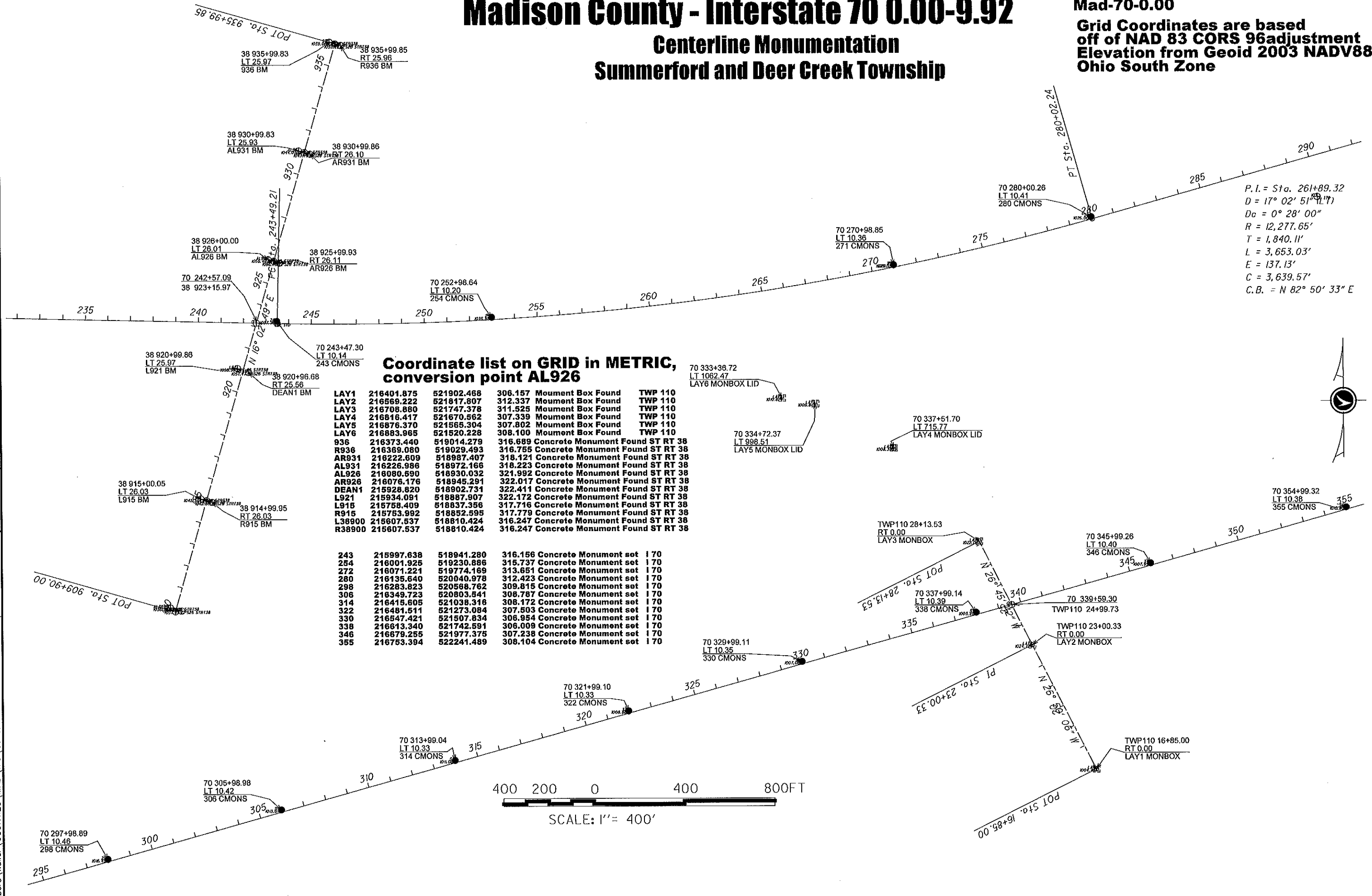
Centerline Stationing and offset
at GROUND from Cla-70-29.19
Mad-70-0.00

Grid Coordinates are based
off of NAD 83 CORS 96adjustment
Elevation from Geoid 2003 NADV88
Ohio South Zone

CALCULATED
CHECKED

+97.81
77
CMONS

16-JAN-2009 2:26PM kaller
Design
I:\users\kaller\COUNTIES\MAD\170 0+00 to US42\Newmonumentation.dgn



P.I. = Sta. 261+89.32
D = 17° 02' 51" (PT)
Dc = 0° 28' 00"
R = 12,277.65'
T = 1,840.11'
L = 3,653.03'
E = 137.13'
C = 3,639.57'
C.B. = N 82° 50' 33" E

Coordinate list on GRID in METRIC, conversion point AL926

LAY1	216401.875	521902.468	306.157 Monument Box Found	TWP 110
LAY2	216559.222	521817.807	312.337 Monument Box Found	TWP 110
LAY3	216708.860	521747.378	311.525 Monument Box Found	TWP 110
LAY4	216816.417	521670.562	307.339 Monument Box Found	TWP 110
LAY5	216876.370	521565.304	307.802 Monument Box Found	TWP 110
LAY6	216883.965	521520.226	308.100 Monument Box Found	TWP 110
936	216373.440	519014.279	316.689 Concrete Monument Found ST RT 38	
R936	216369.080	519029.493	316.755 Concrete Monument Found ST RT 38	
AR931	216222.609	518987.407	318.121 Concrete Monument Found ST RT 38	
AL931	216226.986	518972.166	318.223 Concrete Monument Found ST RT 38	
AL926	216080.590	518830.032	321.992 Concrete Monument Found ST RT 38	
AR926	216076.176	518945.291	322.017 Concrete Monument Found ST RT 38	
DEAN1	215928.820	518902.731	322.411 Concrete Monument Found ST RT 38	
L921	215934.091	518887.907	322.172 Concrete Monument Found ST RT 38	
L915	215758.409	518837.356	317.716 Concrete Monument Found ST RT 38	
R915	215753.992	518852.595	317.779 Concrete Monument Found ST RT 38	
L38900	215607.537	518810.424	316.247 Concrete Monument Found ST RT 38	
R38900	215607.537	518810.424	316.247 Concrete Monument Found ST RT 38	
243	215997.638	518941.280	316.156 Concrete Monument set	170
254	216001.925	519230.886	315.737 Concrete Monument set	170
272	216071.221	519774.169	313.651 Concrete Monument set	170
280	216135.640	520040.978	312.423 Concrete Monument set	170
298	216283.823	520588.762	309.815 Concrete Monument set	170
306	216349.723	520803.541	308.787 Concrete Monument set	170
314	216415.605	521038.316	308.172 Concrete Monument set	170
322	216481.511	521273.084	307.503 Concrete Monument set	170
330	216547.421	521507.834	306.954 Concrete Monument set	170
338	216613.340	521742.591	306.009 Concrete Monument set	170
346	216679.255	521977.375	307.238 Concrete Monument set	170
355	216753.394	522241.489	308.104 Concrete Monument set	170

70 333+36.72
LT 1062.47
LAY6 MONBOX LID

70 334+72.37
LT 998.51
LAY5 MONBOX LID

70 337+61.70
LT 715.77
LAY4 MONBOX LID

70 354+99.32
LT 10.38
355 CMONS

TWP110 28+13.53
RT 0.00
LAY3 MONBOX

70 345+99.26
LT 10.40
346 CMONS

70 337+99.14
LT 10.39
338 CMONS

TWP110 24+99.73

70 329+99.11
LT 10.35
330 CMONS

TWP110 23+00.33
RT 0.00
LAY2 MONBOX

70 321+99.10
LT 10.33
322 CMONS

70 313+99.04
LT 10.33
314 CMONS

70 305+98.98
LT 10.42
306 CMONS

70 297+98.89
LT 10.46
298 CMONS



SCALE: 1" = 400'

Centerline Stationing and offset
at GROUND from Cla-70-29.19
Mad-70-0.00

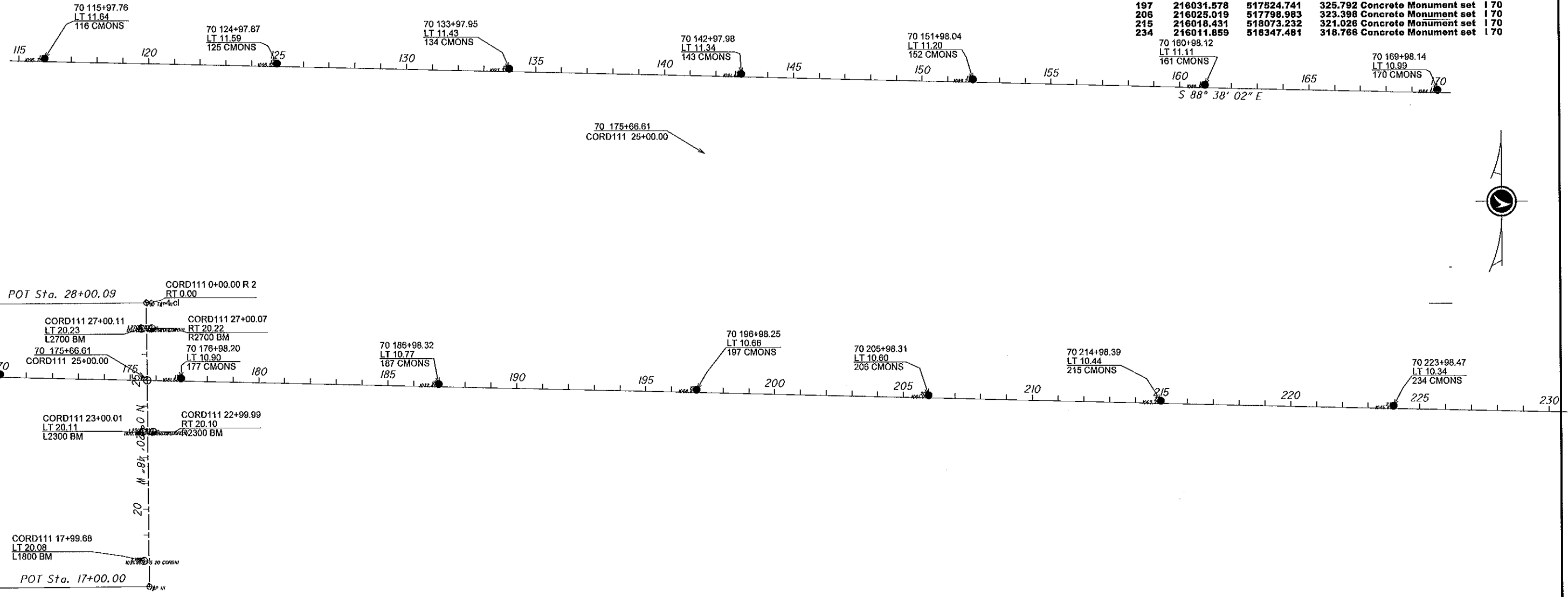
Madison County - Interstate 70 0.00-9.92

Centerline Monumentation Summerford and Deer Creek Township

Coordinate list on GRID in METRIC,
conversion point AL926

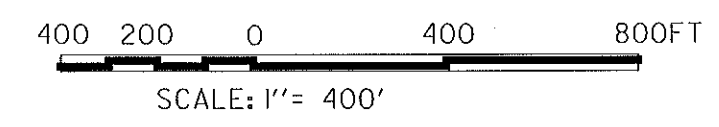
L1800	215830.596	516870.339	332.833	Concrete Monument Found CO RD 111
L2300	215983.082	516869.408	335.539	Concrete Monument Found CO RD 111
L2700	216105.023	516868.634	335.644	Concrete Monument Found CO RD 111
R2300	215983.152	516881.663	335.629	Concrete Monument Found CO RD 111
R2700	216105.086	516880.962	335.63	Concrete Monument Found CO RD 111
116	216090.737	515056.567	333.99	Concrete Monument set I 70
125	216084.179	515330.827	333.938	Concrete Monument set I 70
134	216077.582	515605.075	333.266	Concrete Monument set I 70
143	216071.023	515879.31	332.672	Concrete Monument set I 70
152	216064.441	516153.552	332.003	Concrete Monument set I 70
161	216057.873	516427.803	331.292	Concrete Monument set I 70
170	216051.298	516702.031	330.603	Concrete Monument set I 70
177	216046.182	516915.336	329.668	Concrete Monument set I 70
187	216038.875	517220.066	328.408	Concrete Monument set I 70
197	216031.578	517524.741	325.792	Concrete Monument set I 70
206	216025.019	517798.983	323.398	Concrete Monument set I 70
215	216018.431	518073.232	321.026	Concrete Monument set I 70
234	216011.859	518347.481	318.766	Concrete Monument set I 70

Grid Coordinates are based
off of NAD 83 CORS 96 adjustment
Elevation from Geoid 2003 NADV88
Ohio South Zone



16-JAN-2009 2:26PM koller
Design
I:\users\koller\COUNTIES\MAD\70\centerline\70_0+00 to US42\Newmonumentation.dgn

CALCULATED
CHECKED

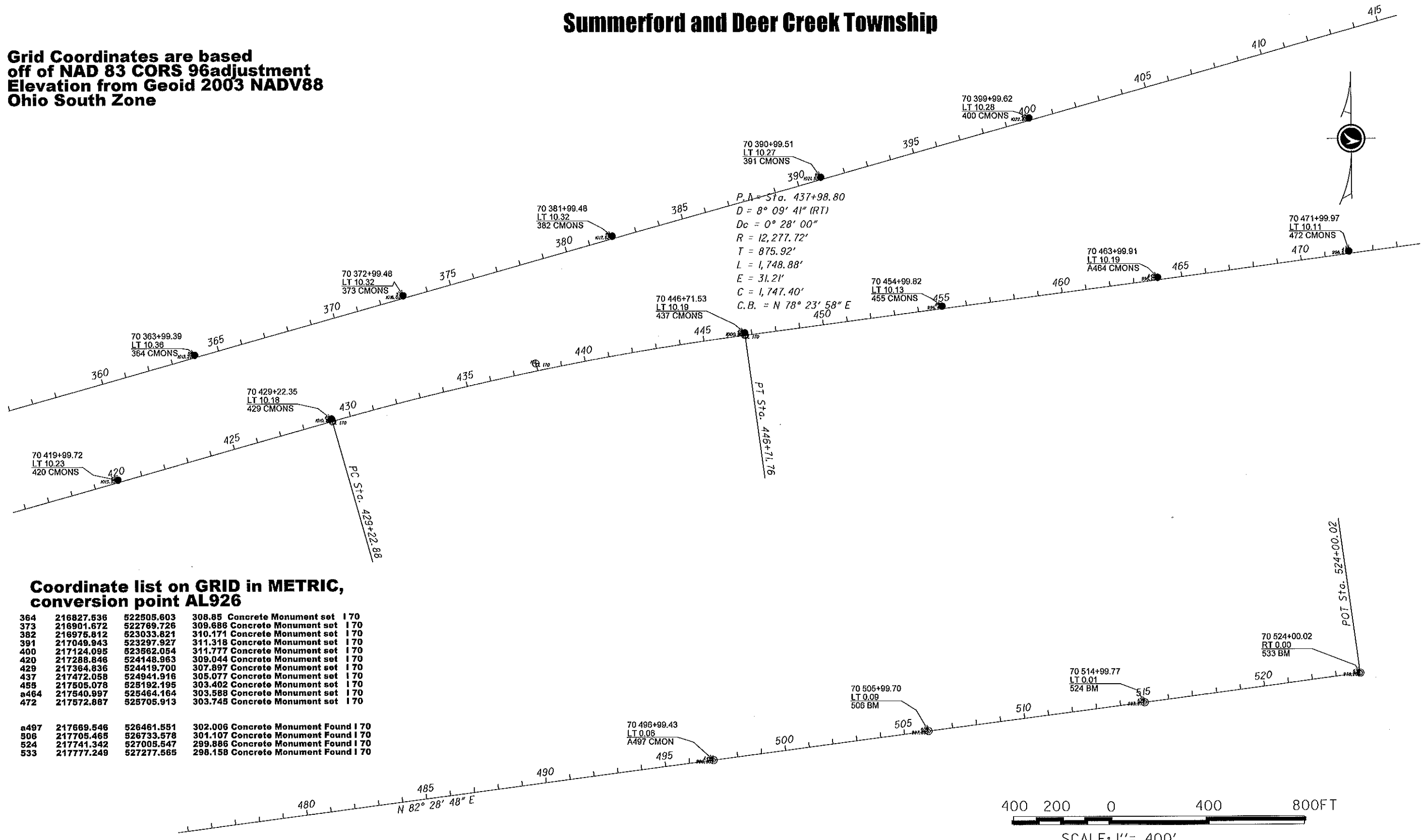


Centerline Stationing and offset
at GROUND from CLA-70-29.19
Mad-70-0.00 and Mad-70-6.25

Madison County - Interstate 70 0.00-9.92

Centerline Monumentation Summerford and Deer Creek Township

Grid Coordinates are based
off of NAD 83 CORS 96 adjustment
Elevation from Geoid 2003 NADV88
Ohio South Zone



Coordinate list on GRID in METRIC, conversion point AL926

364	216827.536	522505.603	308.85 Concrete Monument set	170
373	216901.672	522769.726	309.688 Concrete Monument set	170
382	216975.812	523033.821	310.171 Concrete Monument set	170
391	217049.943	523297.927	311.318 Concrete Monument set	170
400	217124.095	523562.054	311.777 Concrete Monument set	170
420	217288.846	524148.963	309.044 Concrete Monument set	170
429	217364.836	524419.700	307.897 Concrete Monument set	170
437	217472.058	524941.916	305.077 Concrete Monument set	170
459	217505.078	525182.195	303.402 Concrete Monument set	170
a464	217540.897	525464.164	303.588 Concrete Monument set	170
472	217572.887	525705.913	303.745 Concrete Monument set	170
a497	217669.546	526461.551	302.006 Concrete Monument Found	170
506	217705.465	526733.578	304.107 Concrete Monument Found	170
524	217741.342	527005.547	289.886 Concrete Monument Found	170
533	217777.249	527277.565	298.158 Concrete Monument Found	170

I:\users\koller\COUNTIES\MAD\70\centerline\70_0+00 to US42\Newmonumentation.dgn Design 16-JAN-2009 2:26PM koller

CALCULATED
CHECKED

4
4