

STATE OF OHIO
DEPARTMENT OF TRANSPORTATION

HAM-75-3.84 WATER WORKS (BU-24)

HAMILTON COUNTY
CITY OF CINCINNATI

PROJECT DESCRIPTION

THIS IS PHASE 5A OF THE HAMILTON 75 CORRIDOR PROJECTS (MCE). THE PROJECT ADDS A LANE TO IR 75 SB, PROVIDES 4-LANE CONTINUITY NB, AND RECONFIGURES IR 74 EB RAMP TO IR 75. THE PROJECT ALSO INCLUDES SURFACE COURSE AND ADDITIONAL PAVEMENT WORK TO THE SOUTH AND IMPROVEMENTS TO RAMP A AT THE HOPPLE ST INTERCHANGE.

BUILDABLE UNIT 24 DESCRIPTION

BU-24 INCLUDES THE INSTALLATION OF WATERLINE AT SASSAFRAS STREET AND COMFORT STREET.

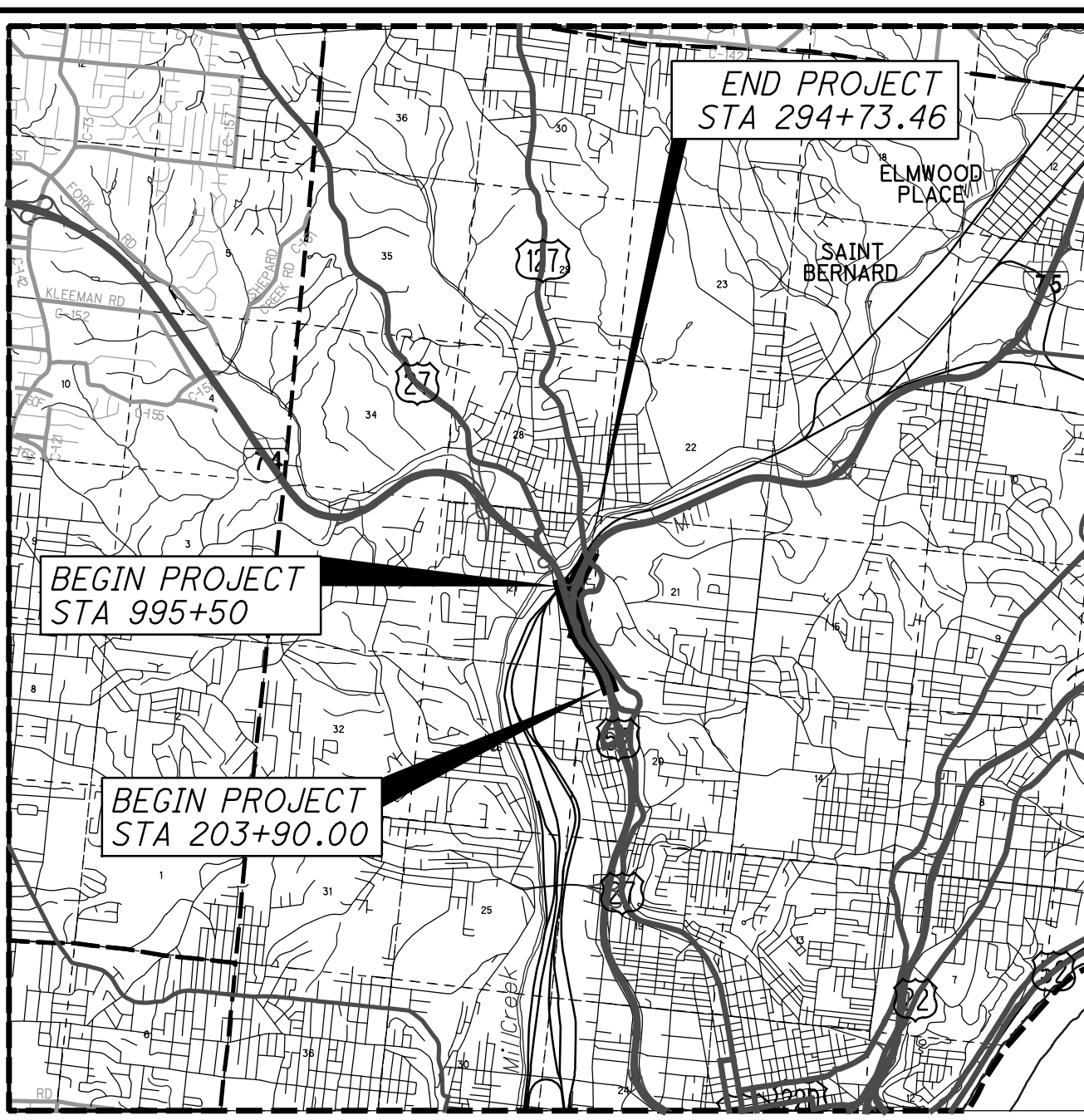
LIMITED ACCESS

THIS IMPROVEMENT IS ESPECIALLY DESIGNED FOR THROUGH TRAFFIC AND HAS BEEN DECLARED A LIMITED ACCESS HIGHWAY OR FREEWAY BY ACTION OF THE DIRECTOR IN ACCORDANCE WITH THE PROVISIONS OF SECTION 5511.02 OF THE OHIO REVISED CODE.

2016 SPECIFICATIONS

THE STANDARD SPECIFICATIONS OF THE STATE OF OHIO, DEPARTMENT OF TRANSPORTATION, INCLUDING SUPPLEMENTAL SPECIFICATIONS LISTED IN THE PLANS AND CHANGES LISTED IN THE PROPOSAL SHALL GOVERN THIS IMPROVEMENT.

I HEREBY APPROVE THESE PLANS AND DECLARE THAT THE MAKING OF THIS IMPROVEMENT WILL NOT REQUIRE THE CLOSING TO TRAFFIC OF THE HIGHWAY AND THAT PROVISIONS FOR THE MAINTENANCE AND SAFETY OF TRAFFIC WILL BE AS SET FORTH ON THE PLANS AND ESTIMATES.



LOCATION MAP

LATITUDE: 39° 09' 03" LONGITUDE: -84° 32' 24"



PORTION TO BE IMPROVED	—————
INTERSTATE HIGHWAY	—————
FEDERAL ROUTES	—————
STATE ROUTES	—————
COUNTY & TOWNSHIP ROADS	—————
OTHER ROADS	—————

DESIGN DESIGNATION

	IR 75		IR 74		DIRECTIONAL ROADWAY	
	SOUTH OF MITCHELL	SOUTH OF IR 74	WEST OF BEEKMAN	EAST OF BEEKMAN	IR 75 NB TO IR 74 WB	IR 74 EB TO IR 75 SB
CURRENT ADT (2010)	149,400	152,100	75,000	88,300	25,300	25,300
DESIGN YEAR ADT (2030)	174,300	179,200	89,300	102,000	29,800	29,800
DESIGN HOURLY VOLUME (2030)	14,640	15,050	8,040	9,180	4,100	4,380
DIRECTIONAL DISTRIBUTION	0.54	0.70	0.72	0.73	1.00	1.00
TRUCKS (24 HOUR B&C)	0.16	0.13	0.15	0.13	0.03	0.08
DESIGN SPEED	60 MPH	60 MPH	60 MPH	60 MPH	50 MPH	50 MPH
LEGAL SPEED	55 MPH	55 MPH	55 MPH	55 MPH	50 MPH	50 MPH
DESIGN FUNCTIONAL CLASSIFICATION:	03 URBAN INTERSTATE	03 URBAN INTERSTATE	03 URBAN INTERSTATE	03 URBAN INTERSTATE	03 URBAN INTERSTATE	03 URBAN INTERSTATE
NHS PROJECT	YES					

DESIGN EXCEPTIONS

DESIGN FEATURE	APPROVAL DATES	SHEET NUMBERS
STOP. SIGHT DIST. - SB IR 75 (CURVE 6)	4/6/18	SEE BU-14
SHOULDER WIDTH - IR 74-1892R BRIDGE	4/10/18	
SHOULDER WIDTH - RAMP P 1908S BRIDGE	4/11/18	
CURVE RADIUS - RAMP P 1908S BRIDGE	4/11/18	
STOP. SIGHT DIST. - RAMP P 1908S BRIDGE	4/11/18	
S.E. RATE - IR 74 EB CURVE 13, 1908R BRIDGE	4/26/18	

INDEX OF SHEETS:

TITLE SHEET	1
SCHEMATIC PLAN	2
GENERAL NOTES	3-5
WATER WORKS PLAN	6

STANDARD CONSTRUCTION DRAWINGS												SUPPLEMENTAL SPECIFICATIONS	
BP-1.1	7/28/00	DM-1.1	7/21/17	RM-4.5	7/21/17	HL-20.21	1/19/18	MT-98.11	1/20/17	TC-21.20	1/19/18	800-2016	1/19/18
BP-2.1	7/17/15	DM-1.2	1/18/13	RM-4.6	7/19/13	HL-20.24	1/19/18	MT-98.20	7/18/14	TC-21.50	7/15/16	804	1/15/16
BP-2.2	7/18/08	DM-1.3	7/18/14			HL-30.11	1/19/18	MT-98.21	7/18/14	TC-22.10	10/18/13	806	3/2/15
BP-2.3	7/18/14	DM-2.1	1/18/13	A-1-69	7/19/02	HL-30.21	1/17/14	MT-98.29	1/20/17	TC-22.20	1/17/14	808	10/16/15
BP-2.4	7/19/13	DM-4.1	1/15/16	AS-1-15	7/17/15	HL-30.22	1/17/14	MT-98.30	7/21/17	TC-41.30	10/18/13	809	1/19/18
BP-3.1	7/18/14	DM-4.2	7/20/12	AS-2-15	1/19/18	HL-30.31	1/17/14	MT-99.30	1/19/18	TC-42.10	10/18/13	814	7/15/16
BP-6.1	7/19/13	DM-4.3	1/15/16	EXJ-4-87	1/19/18	HL-30.32	1/17/14	MT-99.60	7/15/16	TC-42.20	10/18/13	821	4/20/12
BP-8.1	7/18/08	DM-4.4	1/15/16	GSD-1-96	7/19/02	HL-30.33	1/17/14	MT-101.70	1/17/14	TC-52.10	10/18/13	832	1/17/14
CB-1.1	1/15/16	MGS-1.1	1/19/18	PCB-91	1/18/13	HL-30.41	1/19/18	MT-101.75	7/15/16	TC-52.20	1/19/18	839	7/17/15
CB-1.2	1/15/16	MGS-2.1	1/19/18	PSID-1-13	7/15/16	HL-40.10	1/20/17	MT-101.80	1/16/18	TC-61.30	1/20/17	840	7/20/18
CB-1.3	1/15/16	MGS-3.1	1/19/18	RB-1-55	7/19/13	HL-40.20	1/20/17	MT-101.90	7/21/17	TC-65.10	1/17/14	866	4/21/17
CB-2.1	1/15/16	MGS-3.2	1/18/13	SBR-1-13	1/14/14	HL-50.11	1/16/15	MT-102.10	1/20/17	TC-65.11	7/21/17	867	4/15/16
CB-2.2	1/15/16	MGS-4.2	7/19/13	SBR-2-13	1/14/14	HL-50.21	1/19/18	MT-102.20	7/18/14	TC-71.10	1/19/18	902	12/31/12
CB-2.3	1/15/16	MGS-4.3	1/18/13	SICD-1-96	7/18/14	HL-60.12	7/15/16	MT-103.10	1/19/18	TC-72.20	7/15/16	904	7/15/16
CB-3.1	1/15/16	MGS-5.2	7/15/16	SICD-2-14	7/18/14	HL-60.21	1/16/15	MT-104.10	10/16/15	TC-73.20	7/21/17	908	10/20/17
CB-3.3	1/15/16	MGS-5.3	7/15/16	VPF-1-90	1/19/18	HL-60.31	7/21/17	MT-105.10	7/19/13			914	7/15/16
I-2.1	1/15/16	MGS-6.1	1/19/18	HL-10.11	1/19/18	MT-95.30	7/21/17	TC-7.65	1/15/16	ITS-13.10	7/17/15	921	4/20/12
I-2.2	1/15/16			HL-10.12	1/20/17	MT-95.31	7/21/17	TC-9.10	1/19/18	ITS-14.10	7/17/15	939	7/17/15
I-2.3	1/15/16	RM-1.1	7/18/14	HL-10.13	1/20/17	MT-95.32	7/21/17	TC-9.30	1/19/18	ITS-15.10	7/17/15		
I-2.4	1/15/16	RM-4.1	7/21/17	HL-10.15	7/17/15	MT-95.50	7/21/17	TC-12.30	1/19/18	ITS-15.11	7/17/15		
MH-1.2	1/15/16	RM-4.3	7/18/14	HL-10.31	1/19/18	MT-95.45	7/21/17	TC-15.115	10/18/13	ITS-50.10	1/19/18		
		RM-4.4	7/21/17	HL-20.11	4/21/17	MT-95.73	1/19/18	TC-16.21	1/19/18				
		RM-4.4	7/21/17	HL-20.13	1/19/18	MT-98.10	1/20/17	TC-21.10	7/21/17				

ENGINEERS SEAL:

SIGNED: *Bruce Fraser*
DATE: 01/21/2019

PLAN PREPARED BY:

AMERICAN STRUCTUREPOINT INC.
2550 CORPORATE EXCHANGE DR. STE 300
COLUMBUS, OH 43231
TEL 614.901.2235 FAX 614.901.2236
www.structurepoint.com

UNDERGROUND UTILITIES

CONTACT BOTH SERVICES TWO WORKING DAYS BEFORE YOU DIG.

OHIO Utilities Protection SERVICE
(Non-members must be called directly)

OIL & GAS PRODUCERS UNDERGROUND PROTECTION SERVICE
1-800-925-0988

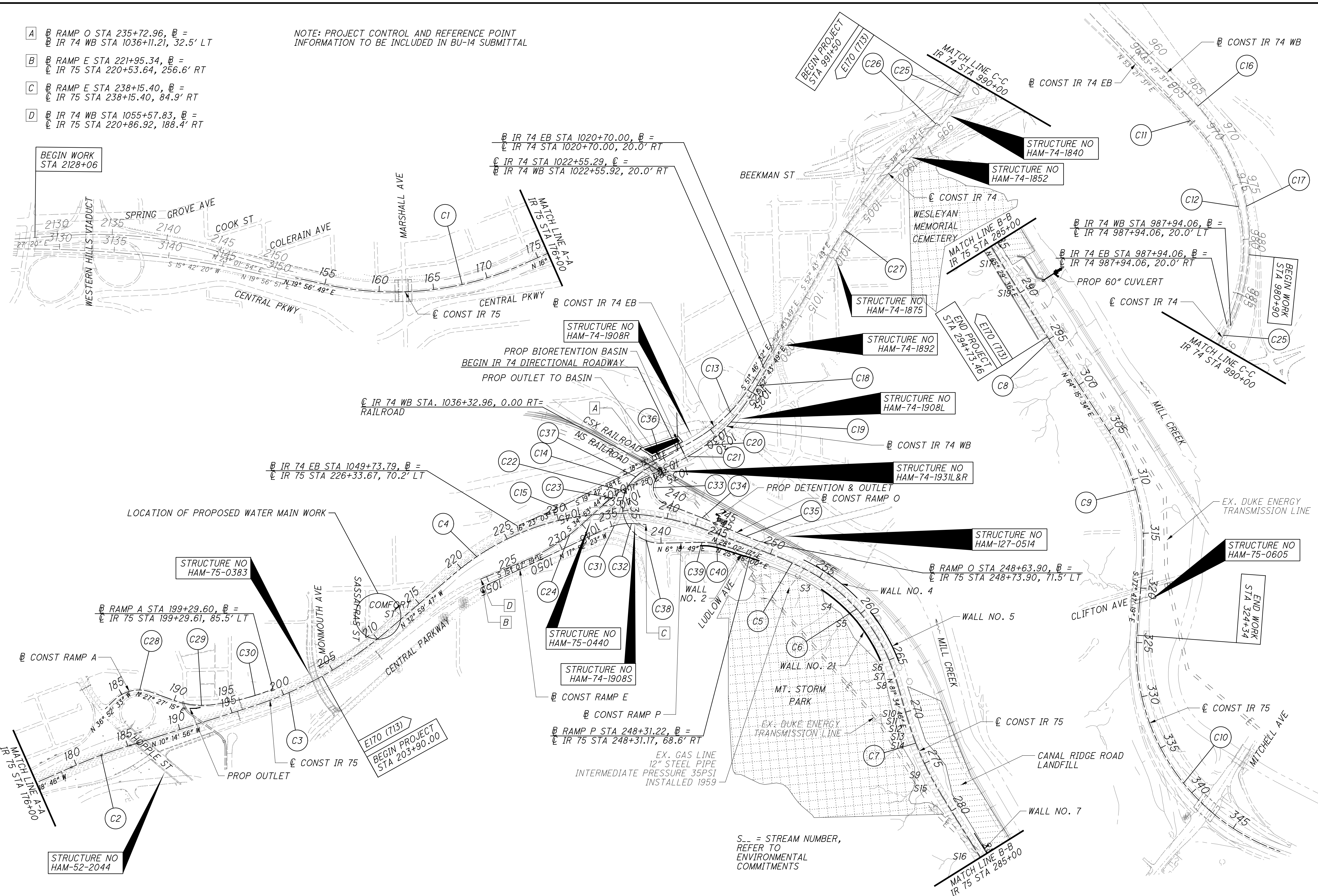
Call Before You Dig
1-800-362-2764

L:stutler 1/18/2019 10:16:51 PM V:\01\2017\01113\C_Design\Roadway\Sheets\BU-24_Waterworks\104667_GT001.dgn

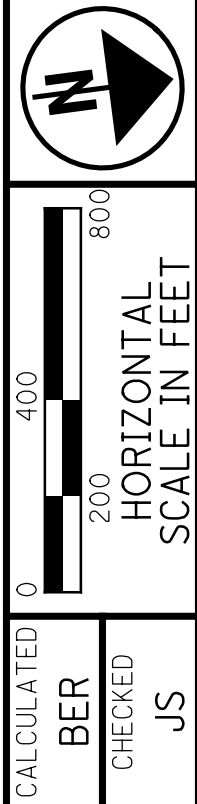
FEDERAL PROJECT NO. E170 (713)
PID NO. 104667
CONSTRUCTION PROJECT NO. 183000
RAILROAD INVOLVEMENT CSXT (CSX OP# OH1179) NORFOLK SOUTHERN
HAM-75-3.84

- A B RAMP O STA 235+72.96, $\text{B} =$
 C IR 74 WB STA 1036+11.21, 32.5' LT
- B B RAMP E STA 221+95.34, $\text{B} =$
 C IR 75 STA 220+53.64, 256.6' RT
- C B RAMP E STA 238+15.40, $\text{B} =$
 C IR 75 STA 238+15.40, 84.9' RT
- D B IR 74 WB STA 1055+57.83, $\text{B} =$
 C IR 75 STA 220+86.92, 188.4' RT

NOTE: PROJECT CONTROL AND REFERENCE POINT INFORMATION TO BE INCLUDED IN BU-14 SUBMITTAL



S... = STREAM NUMBER, REFER TO ENVIRONMENTAL COMMITMENTS



SCHEMATIC PLAN

HAM-75-3.84

BRamsdell 10/12/2022 9:30/2022 01/20/2017 01113 C. Design 104667 HAM-75-3.84 Design Roadway Sheets BU-24 Waterworks 104667_GEO01.dgn

UTILITIES

LISTED BELOW ARE ALL UTILITIES LOCATED WITHIN THE PROJECT CONSTRUCTION LIMITS TOGETHER WITH THEIR RESPECTIVE OWNERS:

WATER, STORM, & SEWER

METROPOLITAN SEWER DISTRICT OF GREATER CINCINNATI
ATTN: ROB FRANKLIN
1600 GEST STREET
CINCINNATI, OH 45204
513-557-7188
ROB.FRANKLIN@CINCINNATI-OH.GOV

ATTN: ANDY BACHMAN
1600 GEST STREET
CINCINNATI, OH 45204
513-244-3904
ANDY.BACHMAN@CINCINNATI-OH.GOV

CINCINNATI STORMWATER MANAGEMENT UTILITY
ATTN: ROB GOODPASTER
4747 SPRING GROVE AVE
CINCINNATI, OH 45232
513-591-7746
ROBERT.GOODPASTER@CINCINNATI-OH.GOV

GREATER CINCINNATI WATER WORKS
ATTN: JON HUNSEDER
4747 SPRING GROVE AVE
CINCINNATI, OH 45232
513-591-5056
JON.HUNSEDER@GCWW.CINCINNATI-OH.GOV

ELECTRIC

DUKE ENERGY - ELECTRIC
ATTN: AARON WRIGHT
139 EAST 4TH STREET, ROOM 467A
CINCINNATI, OH 45202
513-287-3674
AARON.WRIGHT@DUKE-ENERGY.COM

GAS

DUKE ENERGY - GAS
ATTN: BRAD SEITER
139 EAST 4TH ST., ROOM 460A
CINCINNATI, OH 45202
513-287-4415
BRALEY.SEITER@DUKE-ENERGY.COM

TELEPHONE & CABLE

CINCINNATI BELL - UNDERGROUND
ATTN: MARK CONNER
221 E 4TH ST, BLDG 121-900
CINCINNATI, OH 45201
513-565-7043
MARK.CONNER@CINBELL.COM

CINCINNATI BELL - AERIAL
ATTN: DORIAN JOHNSON
221 E 4TH ST, BLDG 121-900
CINCINNATI, OH 45201
513-566-5120
DORIAN.JOHNSON@CINBELL.COM

CHARTER (FKA TIME WARNER CABLE)
ATTN: KENT RIEGER
11252 CORNELL PARK DR
CINCINNATI, OH 45242
513-386-5499
KENT.RIEGER@TWCABLE.COM

TELEPHONE & CABLE - CONTINUED

MCI/VERIZON
ATTN: ALLAN GUEST
120 RAVINE ST
AKRON, OH
330-253-8267
ALLAN.GUEST@VERIZONBUSINESS.COM

QUEST/CENTURYLINK
ATTN: CHRIS STRAYER
441 W. BROAD ST
PATASKALA, OH 43062
330-886-1299
CHRISTOPHER.STRAYER@CENTURYLINK.COM

CITY OF CINCINNATI TELECOM
ATTN: EDDIE SELLO
1106 BATES AVENUE
CINCINNATI, OH 45225
513-352-2391
EDDIE.SELLON@CINCINNATI-OH.GOV

ITS (FORMERLY ARTIMIS)
ODOT CENTRAL OFFICE OF TRAFFIC OPERATIONS
1606 WEST BROAD STREET
COLUMBUS, OH 43223

ODOT ITS IS A NON-OUPS MEMBER
FOR LOCATES CONTACT:
ODOT CENTRAL OFFICE OF TRAFFIC OPERATIONS
1606 WEST BROAD STREET
COLUMBUS, OH 43223
614-387-4113
CEN.ITS.LAB@DOT.OHIO.GOV

LOCAL MUNICIPALITIES

CITY OF CINCINNATI ENGINEERING
ATTN: CITY ENGINEER
CHRIS KELLY
801 PLUM ST, ROOM 450
CITY HALL
CINCINNATI, OH 45202
513-352-3721
CHRIS.KELLY@CINCINNATI-OH.GOV

CITY OF CINCINNATI TRAFFIC
ATTN: LINDA KISER
801 PLUM ST, ROOM 320
CINCINNATI, OH 45202
513-352-3730
LINDA.KISER@CINCINNATI-OH.GOV

CITY OF CINCINNATI LIGHTING
ATTN: CURTIS HINES
801 PLUM ST, ROOM 320
CINCINNATI, OH 45202
513-532-3462
CURTIS.HINE@CINCINNATI-OH.GOV

CITY OF CINCINNATI SIGNALS
ATTN: ANDY CARTER
801 PLUM ST, ROOM 320
CINCINNATI, OH 45202
513-352-5272
ANDY.CARTER@CINCINNATI-OH.GOV

THE LOCATION OF THE UNDERGROUND UTILITIES SHOWN ON THE PLANS ARE AS OBTAINED FROM THE OWNERS AS REQUIRED BY SECTION 153.64 O.R.C.

SURVEYING PARAMETERS

PRIMARY PROJECT CONTROL MONUMENTS GOVERN ALL POSITIONING ON ODOT PROJECTS. SEE SHEETS 4-5 OF THE BU-14 PLANS FOR A TABLE CONTAINING PROJECT CONTROL INFORMATION.

USE THE FOLLOWING PROJECT CONTROL, VERTICAL POSITIONING, AND HORIZONTAL POSITIONING PARAMETERS FOR ALL SURVEYING:

PROJECT CONTROL

POSITIONING METHOD: GNSS
MONUMENT TYPE: B

VERTICAL POSITIONING

ORTHOMETRIC HEIGHT DATUM: NAVD 1988
GEOID: GEOID 03

HORIZONTAL POSITIONING

REFERENCE FRAME: NAD 1983 (1995)
ELLIPSOID: GRS80
MAP PROJECTION: LAMBERT CONFORMAL CONIC
COORDINATE SYSTEM: OHIO SOUTH (3402)
COMBINED SCALE FACTOR: 0.999916592897
ORIGIN OF COORDINATE SYSTEM: 0, 0

USE THE POSITIONING METHODS AND MONUMENT TYPE USED IN THE ORIGINAL SURVEY TO RESTORE ALL MONUMENTS RELATED TO PRIMARY PROJECT CONTROL THAT ARE DAMAGED OR DESTROYED BY CONSTRUCTION ACTIVITIES. RESTORE THE DAMAGED OR DESTROYED MONUMENTS IN ACCORDANCE WITH CMS 623.

UNITS ARE IN U.S. SURVEY FEET.

BRamsdell 10:12:49 AM
9/30/2022
V:\2017\01113\C_Design\104667_HAM-75-3.84\Design\Roadway\Sheets\BU-24_Waterworks\104667_GN001.dgn

CALCULATED
LZS
CHECKED
JS

GENERAL NOTES

HAM - 75 - 3.84

4
6

BRamsdell 9/30/2022 10:12:50 AM
V:\2017\01113.C.Design\104667.HAM-75-3.84.Design\Roadway\Sheets\BU-24-Waterworks\104667_GN002.dgn

MAINTAIN SERVICE CONTINUITY IN ACCORDANCE WITH GCWW REGULATIONS WHILE PERFORMING THE UTILITY RELOCATION WORK.

KEEP THE UTILITY OWNER FULLY INFORMED OF SCHEDULES, INCLUDING COORDINATING WITH THE UTILITY OWNER WITH REGARD TO THE DESIGN BUILD TEAM'S DESIGN, CONSTRUCTION AND INSPECTION OF THE UTILITY RELOCATION WORK.

COORDINATE ANY CHANGES WITH THE UTILITY OWNER. ALL CHANGES SHALL BE SUBJECT TO APPROVAL FROM THE UTILITY OWNER.

KEEP THE UTILITY OWNER INVOLVED IN MAKING DECISIONS THAT AFFECT THE UTILITY OWNER'S FACILITIES SO THE UTILITY OWNER IS ABLE TO PROVIDE UNINTERRUPTED SERVICE TO ITS CUSTOMERS, OR BE SUBJECT TO THE LEAST INTERRUPTIONS PRACTICABLE.

OBTAIN ANY PERMITS APPLICABLE FOR THE WORK INCLUDING ALL RELATED FEES.

INSTALLATION OF WATER MAIN AND RELATED APPURTENANCES IS TO FOLLOW GCWW RULES REGULATIONS, GCWW STANDARD DRAWINGS, THE CITY SUPPLEMENT TO THE ODOT SPECIFICATIONS, LATEST EDITION, GENERAL PROVISIONS, AND CITY OF CINCINNATI PURCHASING SPECIFICATIONS FOR MATERIALS.

THE NUMBER OF HIGH POINTS ARE TO BE MINIMIZED. ALL HIGH POINTS MUST BE ABLE TO REMOVE AIR USING AN AIR COCK ASSEMBLY IN ACCORDANCE WITH STANDARD DRAWINGS. AIR COCK ASSEMBLIES ARE TO BE INSTALLED ON BOTH SIDES OF VALVES.

RESTRAINED PIPE MUST BE DETERMINED USING MANUFACTURERS GUIDELINES. PIPES MUST BE RESTRAINED USING BOTH THRUST BLOCKS, PER STANDARD DRAWINGS, AND JOINT RESTRAINTS. JOINTS MAY BE RESTRAINED USING MEGA LUGS OR FIELD LOK GASKETS.

ON PIPE 16 INCH AND LARGER, BUTTERFLY VALVES MUST BE USED. ON PIPE SMALLER THAN 16 INCHES, RESILIENT SEAT GATE VALVES MUST BE USED. ALL VALVES MUST HAVE MECHANICAL JOINTS AND MEET CITY OF CINCINNATI PURCHASING SPECIFICATIONS. GCWW STANDARD BUTTERFLY VALVE CONFIGURATION IS AVAILABLE UPON REQUEST.

ALL NEW PIPE MUST BE INSTALLED WITH A MINIMUM COVER IN ACCORDANCE WITH THE CITY SUPPLEMENT TO THE ODOT SPECIFICATIONS. WHEN THIS IS NOT POSSIBLE, INSULATION MAY BE USED ONLY AT THE DISCRETION OF GCWW FOLLOWING CITY SUPPLEMENT TO ODOT SPECIFICATIONS SECTION 1106.

A MINIMUM OF 3 FT OF HORIZONTAL CLEARANCE FROM THE OUTSIDE EDGE OF THE PIPE AND ANY OTHER PIPE OR STRUCTURE IS REQUIRED. A MINIMUM OF 18 INCHES OF VERTICAL CLEARANCE FROM THE PIPE IS REQUIRED.

WHEN A CHANGE OF DIRECTION IS REQUIRED, 90 DEGREE BEND FITTINGS ARE NOT PERMITTED. THE USE OF TWO 45 DEGREE BENDS WILL BE REQUIRED

LOW LEAD BRASS FITTINGS MUST BE USED.

FOR GENERAL NOTES TO BE INCLUDED WITH APPLICABLE BUILDABLE UNITS CONTAINING GCWW WORK REFER TO PID 104667.

THE CONTRACTOR IS ADVISED THAT THERE ARE SEVERAL CHANGES TO THE MOST RECENT EDITION OF THE CITY OF CINCINNATI SUPPLEMENT DATED JANUARY 1, 2016. THESE GENERAL PROVISIONS INCLUDE THESE CHANGES. THE SUPPLEMENT AND A SUMMARY OF CHANGES CAN BE PURCHASED OR DOWNLOADED FROM THE CITY'S WEBSITE: [HTTP://WWW.CINCINNATI-OH.GOV/DOIE/ASSETS/FILE/2016%20CITY%20SUPPLEMENT-FINAL.PDF](http://www.cincinnati-oh.gov/odot/assets/file/2016%20CITY%20SUPPLEMENT-FINAL.PDF)

WATER MAIN ITEMS ARE TO BE CONSTRUCTED IN ACCORDANCE WITH THE PROVISIONS OF THE STATE OF OHIO, DEPARTMENT OF TRANSPORTATION, CONSTRUCTION AND MATERIAL SPECIFICATIONS, DATED JANUARY 1, 2016, AND MODIFIED BY THE CITY OF CINCINNATI SUPPLEMENT TO SAID STATE OF OHIO SPECIFICATIONS, EFFECTIVE JANUARY 1, 2016, AND ANY SUPPLEMENTS OR CHANGES THERETO. COPIES OF THE STATE SPECIFICATIONS ARE ON FILE AT THE OFFICE OF CONTRACT SALES OF THE STATE OF OHIO, DEPARTMENT OF TRANSPORTATION, 25 SOUTH FRONT STREET, COLUMBUS, OHIO, AND AT THE OFFICES OF THE CITY ENGINEER OF CINCINNATI, OHIO. SUBMITTAL OF A BID FOR THIS PROJECT IMPLIES THAT THE CONTRACTOR HAS TAKEN ALL PROVISIONS OF THE SUPPLEMENT INTO ACCOUNT.

AS DEFINED IN THE CITY OF CINCINNATI SUPPLEMENT, SECTIONS 107.07 AND 107.071, THE CONTRACTOR IS REQUIRED TO SUBMIT, AT THE TIME OF THE PRE-CONSTRUCTION MEETING, A SITE SAFETY PLAN. FURTHERMORE, THE CONTRACTOR SHALL HAVE AN AUTHORIZED AND COMPETENT SAFETY REPRESENTATIVE ASSIGNED TO THE PROJECT SITE.

THE CONTRACTOR IS ADVISED THAT HE HAS CERTAIN RESPONSIBILITIES UNDER SECTION 153.64 OF THE OHIO REVISED CODE. FOR ALL UNDERGROUND UTILITIES, CONTACT THE OHIO UTILITIES PROTECTION SERVICE AT 1-800-362-2764 (TOLL FREE) 48 HOURS IN ADVANCE OF WORK. THE CONTRACTOR IS ADVISED THAT ALL UTILITY INFORMATION HAS BEEN SHOWN ON THE CONTRACT PLANS FROM INFORMATION PROVIDED BY THE OWNER OF EACH UTILITY IN COMPLIANCE WITH SEC. 153.64 OF THE OHIO REVISED CODE. IN CASES WHERE UTILITY INFORMATION IS INCORRECT AND IT RESULTS IN A CHANGE IN THE CONTRACT PLANS THE CONTRACTOR SHALL FIRST NOTIFY THE OWNER OF THE UTILITY TO DETERMINE THE NECESSARY COURSE OF ACTION. THE CONTRACTOR SHALL SUBMIT ANY SUBSEQUENT CLAIMS AS A RESULT OF DOWNTIME OR ADDITIONAL WORK TO THE OWNER OF THE CONFLICTING UTILITY. THE GCWW WILL NOT ACCEPT CLAIMS FOR ANY UTILITY OTHER THAN THOSE AS A RESULT OF INCORRECT WATER MAIN AND RELATED APPURTENANCE INFORMATION.

THE CONTRACTOR MUST LOCATE OR "POT HOLE" ALL UTILITIES WITHIN THE ALIGNMENT OF THE PROPOSED MAIN A MINIMUM OF 50 FEET AHEAD OF PIPE LAYING. TEST HOLES MUST BE DUG, OR TRENCH EXCAVATED, A MINIMUM OF 50 FEET (15.2 M) IN ADVANCE OF PIPE LAYING, TO ASSURE PROPER CLEARANCE BETWEEN THE WATER MAIN AND ANY UTILITY CROSSING, OR UNDERGROUND STRUCTURE. ALL UTILITIES AND STRUCTURES SHALL BE SUITABLY BRACED AND SUPPORTED. THE CONTRACTOR SHALL UNDERSTAND THAT ANY OBSTRUCTIONS ENCOUNTERED IN THE INSTALLATION OF THE MAIN, DUE TO THE FAILURE OF HAVING 50 FEET (15.2M) OF TRENCH EXCAVATED AHEAD OF LAYING OPERATIONS, MAY REQUIRE REMOVAL AND RELAYING OF THE PIPE AT THE CONTRACTORS EXPENSE. THE GCWW WILL NOT ACCEPT A CLAIM FOR DIFFERENT UTILITY CONDITIONS ENCOUNTERED WHEN TEST HOLES ARE NOT PERFORMED AS REQUIRED.

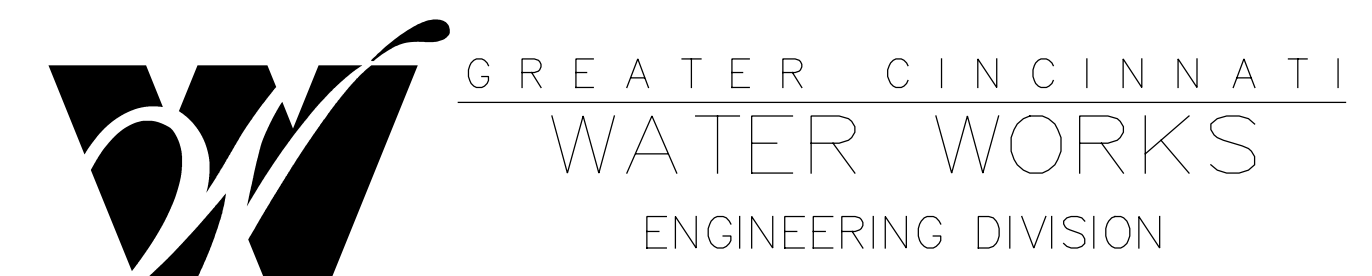
IT IS THE NATURE OF CONSTRUCTION THAT UNMARKED UTILITIES OR UTILITIES NOT SHOWN ON THE PLANS MAY BE ENCOUNTERED WITHIN THE EXCAVATION FOR THE PROPOSED WORK. THE CONTRACTOR IS RESPONSIBLE TO IDENTIFY AND REMOVE ANY ABANDONED UTILITIES ENCOUNTERED IN THE EXCAVATION. NO EXTRA PAYMENT WILL BE MADE TO THE CONTRACTOR FOR THE IDENTIFICATION AND REMOVAL OF THE ABANDONED UTILITY.

STREET PAVEMENT OR SIDEWALK SHOULD NOT BE DISTURBED FOR A DISTANCE OF MORE THAN 200 FEET (61.0 M) AHEAD OF THE LAST LAID PIPE. BACKFILL SHALL BE COMPLETED WITHIN 50 FEET (15.2 M) OF THE LAST LAID PIPE. TEMPORARY OR PERMANENT SURFACE RESTORATION MUST BE INSTALLED WITHIN A DISTANCE OF 200 FEET (61.0 M) OF THE LAID PIPE, INCLUDING THOSE AREAS WHERE MAIN INSTALLATIONS OCCUR WITHIN A CLOSED LANE OR CLOSED STREET CONDITION. ROADWAY PLATES MAY BE USED AS A TEMPORARY MEASURE FOR A PERIOD NOT TO EXCEED 24 HOURS WITHOUT THE APPROVAL OF THE GCWW.

ANY UNDERMINED PAVEMENT OF MORE THAN 6 INCHES HORIZONTAL MUST BE REMOVED PRIOR TO STARTING TRENCH BACKFILL. IF UNDERMINING OF PAVEMENT OCCURS MORE THAN 1 FOOT, THEN PAVEMENT MUST BE SHORED TO PROTECT TRAFFIC, OR ARRANGEMENTS MADE FOR ADDITIONAL LANE CLOSURES MUST BE MADE. IF PROBLEMS CONTINUE TO OCCUR REGARDING TRENCHING INTEGRITY, SHEETING AND BRACING CAN BE REQUIRED BY THE CITY ENGINEER OR THE CITY ENGINEER'S REPRESENTATIVE, AT THE CONTRACTOR'S EXPENSE. IF ANY TUNNELING IS NECESSARY, ADEQUATE INFORMATION SHOWN IN BOTH PLAN AND PROFILE AND TUNNELING PROCEDURES MUST BE SUBMITTED TO THE CITY ENGINEER'S OFFICE PRIOR TO COMMENCEMENT OF WORK.

THE DBT HAS MADE EVERY EFFORT TO DEPICT THE PIPE SEWERS AND LATERAL INFORMATION ON THE PLANS.

APPROVED _____
DATE _____ SUPERVISING ENGINEER - DESIGN



IN THIS PLAN SET, "GCWW" REFERS TO GREATER CINCINNATI WATER WORKS.

CALCULATED
LZS
CHECKED
JS

GENERAL NOTES

HAM - 75 - 3.84

5
6

NOTICE OF CONFIDENTIALITY - PUBLIC INFRASTRUCTURE RECORD

THIS DOCUMENT IS A PUBLIC INFRASTRUCTURE RECORD OF THE CITY OF CINCINNATI AND ITS GREATER CINCINNATI WATER WORKS, AND IS NOT SUBJECT TO THE PUBLIC DISCLOSURE REQUIREMENTS OF THE PUBLIC RECORDS LAWS OF THE STATE OF OHIO AND FEDERAL GOVERNMENT. THIS DOCUMENT IS BEING PROVIDED ON THE BASIS OF YOUR REPORTED NEED, AND SHALL BE CONSIDERED CONFIDENTIAL. BY ACCEPTING THIS DOCUMENT, YOU AGREE THAT IT WILL NOT BE SHARED OR OTHERWISE DISCLOSED TO ANYONE OTHER THAN PERSONS WHO HAVE A DIRECT NEED TO KNOW FOR THE SOLE PURPOSE OF CARRYING OUT THE PROJECT FOR WHICH THIS DOCUMENT WAS OBTAINED. ANYONE RECEIVING THIS DOCUMENT IS BOUND BY THE SAME CONFIDENTIALITY REQUIREMENTS AND MUST TAKE PRECAUTIONS TO PROTECT AGAINST ITS DISSEMINATION.

THE FAILURE TO OBSERVE THE CONFIDENTIALITY REQUIREMENTS OF THIS NOTICE SHALL SERVE AS THE BASIS FOR THE CITY OF CINCINNATI TO IMMEDIATELY SEEK LEGAL RECOURSE, INCLUDING THE RECOVERY OF ACTUAL DAMAGES RESULTING FROM UNAUTHORIZED ACCESS OR DISCLOSURE OF THE DOCUMENT.

THE CONTRACTOR IS ADVISED THAT DUE TO THE ALIGNMENT OF THE PROPOSED WATER MAIN, IT MAY BE NECESSARY TO INSTALL A TEMPORARY VALVE BOX OVER AN EXISTING CHAMBERED VALVE THAT MUST REMAIN IN SERVICE DURING THE WATER MAIN INSTALLATION AS DIRECTED BY THE GCWW INSPECTOR. THE CHAMBER SHALL BE ABANDONED, A VALVE BOX (FURNISHED BY THE CONTRACTOR) PLACED OVER THE VALVE, AND UPON PROJECT COMPLETION, THE VALVE BOX MUST BE REMOVED. THE CONTRACTOR WILL NOT RECEIVE ADDITIONAL COMPENSATION FOR THIS WORK.

IT IS THE CONTRACTOR'S RESPONSIBILITY TO PROVIDE ADEQUATE WATER SUPPLY FOR DOMESTIC AND FIRE FIGHTING PURPOSES. IN ORDER TO ACCOMPLISH THE WATER MAIN CONNECTIONS WITH A MINIMUM AMOUNT OF INCONVENIENCE TO THE CONSUMERS, IT MAY BE NECESSARY TO DO THE WORK AT OTHER THAN NORMAL WORKING HOURS OR AS MAY BE SCHEDULED BY THE GCWW.

IN ORDER TO MINIMIZE THE INCONVENIENCE OF THE CONSUMERS, THE NUMBER OF SHUTDOWNS REQUIRED TO DO THE PROPOSED WATER MAIN WORK SHALL BE LIMITED. ONLY ONE SHUTDOWN, LIMITED TO 8 HOURS, WILL BE ALLOWED DURING A 24 HOUR PERIOD.

ALL WATER SERVICE BRANCHES HAVE A MINIMUM COVER OF 3.0 FEET.

THE CONTRACTOR IS ADVISED THAT IT SHALL BE NECESSARY TO INSTALL TEMPORARY PLUG/CAPS ON THE EXISTING AND PROPOSED WATER MAINS IN ORDER TO MAINTAIN SERVICE DURING TESTING AND WATER MAIN AND BRANCH CONNECTIONS. THESE TEMPORARY PLUG SHALL BE FURNISHED BY THE CONTRACTOR. HE IS RESPONSIBLE FOR THEIR PROPER INSTALLATION.

THE CONTRACTOR IS REQUIRED TO EXCAVATE AND EXPOSE THE EXISTING UTILITIES AND EXISTING WATER MAINS ALONG THE LINE OF THE PROPOSED WATER MAIN AND ALL PROPOSED CONNECTION POINTS TO VERIFY LOCATION, DIAMETER, LINE AND GRADE.

THE CONTRACTOR IS ADVISED THAT ALL C.J. PLUG ARE TO BE RESTRAINED WITH A FIELD LOK GASKET AND ALL M.J. CAPS ARE TO BE RESTRAINED USING A MEGALUG ASSEMBLY. THIS INCLUDES TEMPORARY PLUG AND CAPS FOR TESTING PURPOSES. WHEN A TEMPORARY PLUG IS USED, THE CONTRACTOR IS PERMITTED TO REMOVE THE PLUG BY CUTTING THE SECTION OF PIPE CONTAINING THE PLUG AND USING A SOLID SLEEVE AT THAT POINT TO COMPLETE THE TIE-IN. IN THE EVENT THAT A CAP IS USED, THE CONTRACTOR SHALL REMOVE THE MEGALUG ASSEMBLY AND CAP BEFORE COMPLETING THE TIE-IN.

THE CONTRACTOR IS ADVISED THAT ON ANY FIRE HYDRANT REQUIRED TO BE RELOCATED WITH THIS PROJECT, ALL BOLT ASSEMBLIES SHALL BE REPLACED. NO PART OF ANY FIRE HYDRANT SETTING SHALL BE INSTALLED CLOSER THAN FIVE FEET TO ANY DRIVEWAY, INLET, UTILITY POLE OR GUY WIRE ANCHOR.

AIR COCKS MAY BE NECESSARY FOR THE PROPER OPERATION OF THE WATER SYSTEM. THE AIR RELEASE ASSEMBLY, WHICH MAY NOT BE SHOWN ON THE DRAWING, WILL BE FURNISHED AND INSTALLED BY THE CONTRACTOR PER THE DETAIL ON THESE PLANS, IF REQUIRED BY THE GCWW.

IT SHALL BE THE CONTRACTOR'S RESPONSIBILITY TO ARRANGE FOR THE REMOVAL AND REPLACEMENT OF ANY POLES AND GUYS NECESSARY FOR THE INSTALLATION OF THE PROPOSED WATER MAINS, AND ANY COST CONNECTED THERETO SHALL BE AT HIS EXPENSE.

ALL PIPE AND SPECIALS SHALL BE IN ACCORDANCE WITH CITY OF CINCINNATI SPECIFICATION 40-110-12.

ALL PROCURED WATER MAIN AND APPURTENANCE MATERIALS, OTHER THAN THOSE FURNISHED THROUGH THE GCWW MUST BE PROPERLY CERTIFIED; CERTIFIED FOR GCWW INSPECTION: OR ALREADY INSPECTED BY THE GCWW. PIPE, FITTINGS, VALVES AND FIRE HYDRANTS MUST BE GCWW INSPECTED AND STAMPED MATERIALS.

THE CONTRACTOR SHOULD BE ADVISED THAT ALL FITTINGS (BENDS, OFFSET BENDS, TEES, CROSSES, SLEEVES, CAPS AND PLUG) SUPPLIED FOR THIS JOB MAY BE EITHER ANSI/AWWA C-110 FULL-BODY DUCTILE IRON, CEMENT LINED FITTINGS OR ANSI/AWWA C-153 COMPACT DUCTILE IRON, FUSION BONDED EPOXY COATED FITTINGS IN ACCORDANCE WITH CITY OF CINCINNATI, DEPARTMENT OF PURCHASING, STANDARD SPECIFICATION NO. 40-110-12 FOR PIPE AND FITTINGS WATER, DUCTILE IRON 3" TO 60". ALL FITTINGS ARE SUBJECT TO INSPECTION AND APPROVAL BY APPROPRIATE GCWW INSPECTION PERSONNEL. MINOR PINHOLES AND ABRASIONS TO EPOXY COATED VALVES AND FITTINGS ARE TO BE REPAIRED USING 3M HOT MELT PATCH COMPOUNDS (H.M.P.C.) IN THE STICK FORM. REPAIR PROCEDURES SHALL BE IN ACCORDANCE WITH THE GENERAL APPLICATION STEPS IDENTIFIED FOR THE H.M.P.C. ALL REPAIRS TO EPOXY COATED FITTINGS ARE SUBJECT TO INSPECTION AND APPROVAL BY APPROPRIATE GCWW INSPECTION PERSONNEL.

ALL REJECTED MATERIAL, INCLUDING PIPE AND FITTINGS, SHALL BE REMOVED FROM THE PROJECT SITE IMMEDIATELY.

THE CONTRACTOR MUST MAINTAIN ACCESS TO SIDEWALKS AT ALL TIMES. STORAGE OF ANY MATERIALS WITHIN THE PUBLIC RIGHT OF WAY, INCLUDING SIDEWALKS, IS NOT PERMITTED UNLESS APPROVED BY GCWW, THE PROJECT ENGINEER, OR AS INDICATED ON THE APPROVED PLANS.

ALL COPPER TUBING SHALL BE TYPE "K" OF A STANDARD NOMINAL SIZE: 3/4", 1", 1-1/2" AND 2". ALL FITTINGS WILL HAVE COPPER FLARE TYPE CONNECTIONS AND SHALL BE IN ACCORDANCE WITH CITY OF CINCINNATI SPECIFICATION NO. 40-113-05.

THE CONTRACTOR SHALL FURNISH THE NECESSARY CERTIFICATIONS FOR BRANCH MATERIAL.

ALL PROPOSED WATER MAINS WILL BE HYDROSTATICALLY TESTED FOR LEAKAGE IN ACCORDANCE WITH 1101.054, 'HYDROSTATIC TEST FOR LEAKAGE'.

THE CONTRACTOR WILL BE RESPONSIBLE FOR FILLING, FLUSHING, AND PRESSURE TESTING NEW WATER MAINS, 20" OR SMALLER. THE CONTRACTOR WILL PROVIDE ALL LABOR, MATERIAL AND EQUIPMENT (INCLUDING THE NECESSARY PUMPS TO APPLY THE PRESSURE TEST). THE WATER WORKS WILL PROVIDE THE NECESSARY METER AND GAUGE. ALL COSTS FOR THIS WORK SHALL BE INCLUDED IN THE CONTRACTOR'S UNIT BID PRICE FOR ITEM 1101, "FURNISHING & LAYING DUCTILE IRON PIPE AND FITTINGS". ONCE THE FILLING AND PRESSURE TESTING ARE COMPLETED, THE CONTRACTOR WILL BE RESPONSIBLE FOR FLUSHING THE PROPOSED WATER MAIN AND THE GCWW WILL BE RESPONSIBLE FOR BACTERIA SAMPLING. THE GCWW WILL BE RESPONSIBLE FOR FILLING, PRESSURE TESTING AND FLUSHING NEW WATER MAINS GREATER THAN 20".

THE CONTRACTOR IS RESPONSIBLE FOR ALL PIPE SEWERS DISTURBED IN THE COMPLETION OF THIS PROJECT. IN THE EVENT IT BECOMES NECESSARY TO REPAIR OR REPLACE EXISTING PIPE SEWERS, THE CONTRACTOR MUST NOTIFY SEWER MAINTENANCE, (513)244-1369, BEFORE PROCEEDING WITH THE WORK.

THE CONTRACTOR IS ADVISED THAT HIS UNIT BID PRICES FOR INCLUDE FINAL RESTORATION OF ALL DISTURBED SURFACES.

*ALL VALVE AND AIR RELEASE BOX ASSEMBLIES SHALL BE DOMESTICALLY MANUFACTURED.

ALL BOX ASSEMBLIES FOR 12-INCH AND SMALLER GATE VALVES AND 1-INCH AIR RELEASES SHALL BE EITHER TYLER UNION SERIES 6850, EJ SERIES 8500, OR BINGHAM & TAYLOR SERIES 4905, OR GCWW APPROVED EQUAL. BOX ASSEMBLIES FOR THESE APPLICATIONS REQUIRE A FROST PLUG AND "BOXLOK."

ALL BOX ASSEMBLIES FOR 16-INCH AND ABOVE BUTTERFLY OR GATE VALVES AND 2-INCH AIR RELEASES SHALL BE EJ SERIES 460, OR GCWW APPROVED EQUAL. BOX ASSEMBLIES FOR THESE APPLICATIONS REQUIRE A FROST PLUG.

ALL COSTS ASSOCIATED WITH ADHERENCE TO THESE REQUIREMENTS SHALL BE INCLUDED IN THE CONTRACTOR'S BID PRICE.

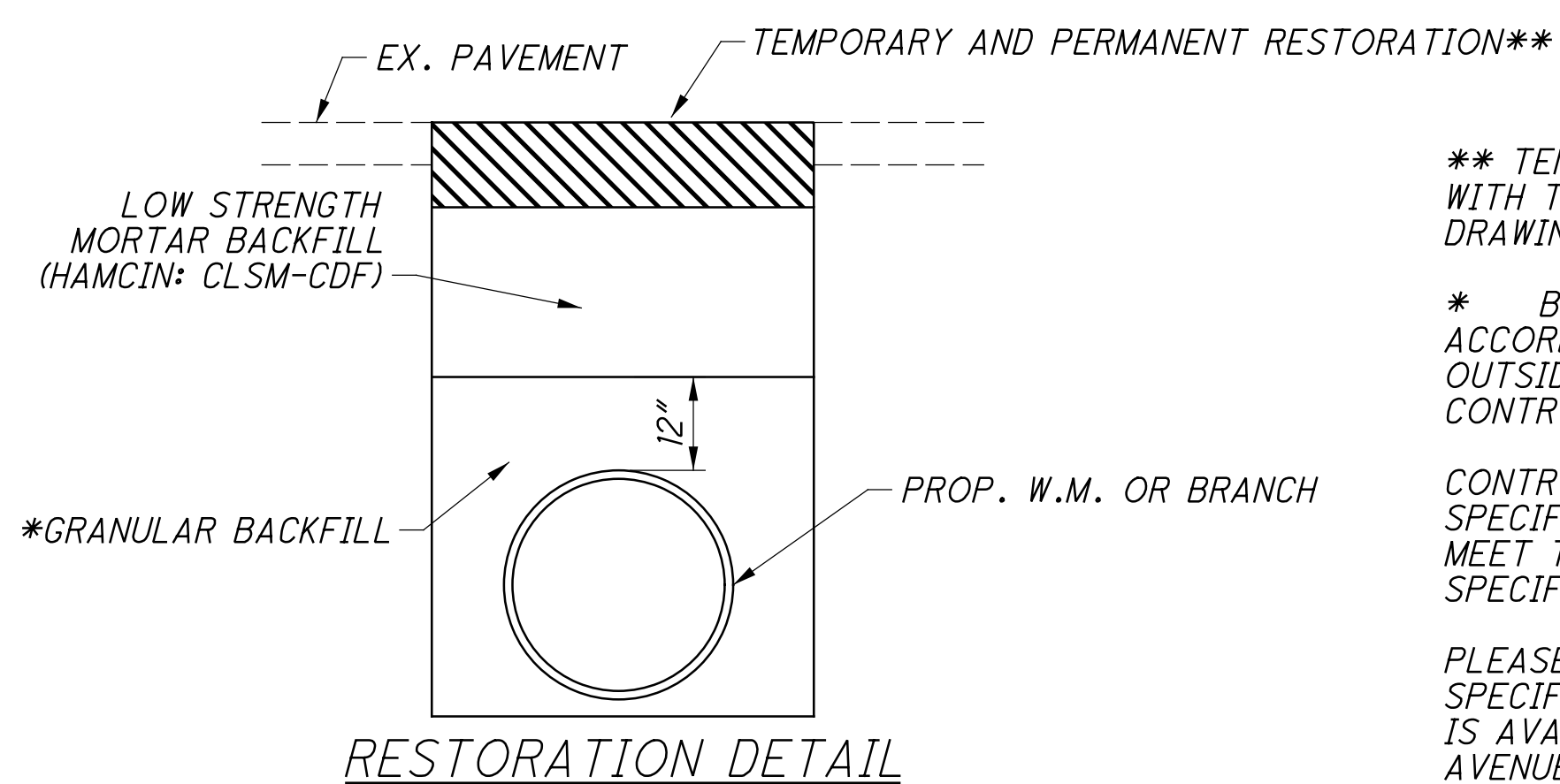
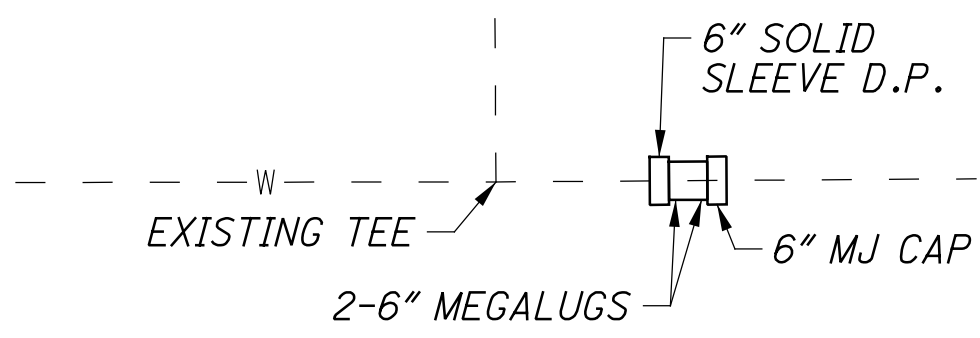
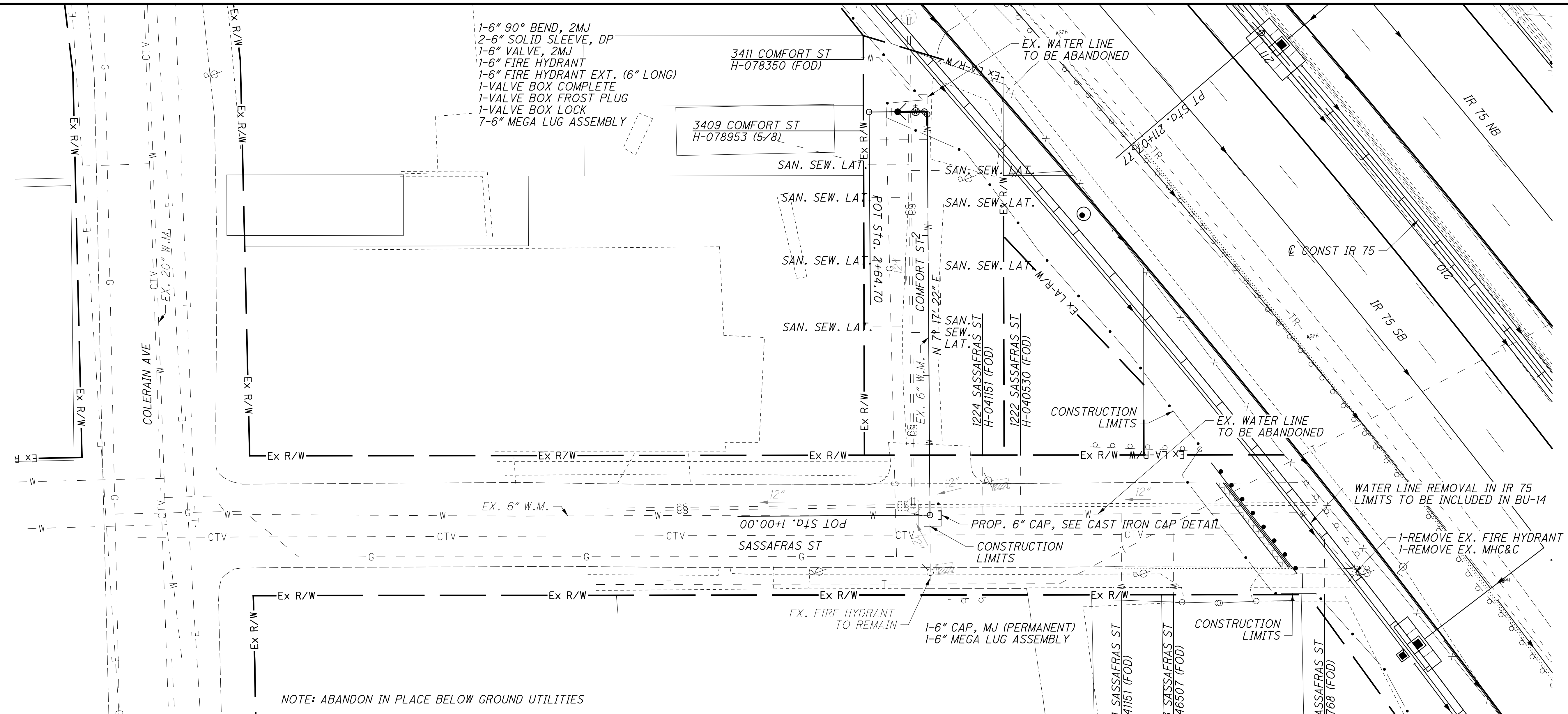
THE MATERIALS LISTED ARE ONLY SUGGESTED FOR USE DURING THE WATER MAIN AND BRANCH RELOCATION WORK AS PROPOSED ON THE DRAWINGS. THE CONTRACTOR SHALL FURNISH ADDITIONAL MATERIAL WHERE NEEDED. NO ALLOWANCE WILL BE MADE FOR UNUSED MATERIAL NOR WILL ANY EXTRA PAYMENT BE MADE FOR ADDITIONAL SPECIALS REQUIRED TO COMPLETE THE WATER MAIN WORK. BEFORE ORDERING MATERIAL THE CONTRACTOR IS RESPONSIBLE FOR MAKING HIS OWN FIELD MEASUREMENTS AND FOR FIELD VERIFYING THE O.D. OF EXISTING WATER MAINS WHERE SLEEVES AND PIPE COUPLINGS ARE INVOLVED.

NOTE 1:
VALVES FURNISHED BY THE CONTRACTOR SHALL BE; AMERICAN RESILIENT WEDGE GATE VALVE SERIES 2500, U.S. PIPE METROSEAL GATE VALVE, KENNEDY VALVE KEN SEAL II RESILIENT GATE VALVE, CLOW F-6100 SERIES RESILIENT WEDGE GATE VALVE, MUELLER 2360 RESILIENT WEDGE GATE VALVE.

NOTE 2:
LOW-LEAD BRASS MATERIAL REQUIREMENTS:
ALL COMPONENTS IN CONTACT WITH WATER SHALL BE FABRICATED FROM SEBILOY II OR FEDERALLOY I-836 ALLOYS OR A MATERIAL APPROVED BY THE ENGINEER. ALL COMPONENTS THAT DO NOT COME IN CONTACT WITH WATER SHALL COMPLY WITH THE REQUIREMENTS OF ASTM B 62 COPPER ALLOY NUMBER. COATED OR WASHED METALS ARE NOT ACCEPTABLE IF THEIR LEAD LEVELS EXCEED .25% BY WEIGHT PRIOR TO THE COATING OR WASHING PROCESS. ALL SERVICE FITTINGS AND MATERIALS SHALL BE CERTIFIED AS SUITABLE FOR CONTACT WITH DRINKING WATER BY AN ACCREDITED CERTIFICATION ORGANIZATION IN ACCORDANCE WITH ANSI/NSF STANDARD 61, DRINKING WATER SYSTEMS COMPONENTS - HEALTH EFFECTS. ALL SERVICE FITTINGS SHALL EITHER BE STAMPED OR EMBOSSED WITH THE LETTER "NL", TO INDICATE "NO-LEAD", OR MARKED TO INDICATE THAT THE PRODUCT IS MANUFACTURED FROM THE LOW-LEAD ALLOYS.

NOTE 3:
SPECIAL NOTE ON SERVICE PIPE IN CORROSIVE SOILS:
SERVICE TUBING IS TO BE SOFT K COPPER MANUFACTURED TO THE REQUIREMENTS OF ASTM B88. SERVICE TUBING COATING SHALL HAVE NOVA POLYETHYLENE LLDPE EXTRUSION RESIN PP-0118-F COATING TO MEET MINIMUM OF .026 MIL THICKNESS CONTAINING UV INHIBITORS. SERVICE TUBING SHALL HAVE IDENTIFICATION & TRACEABILITY ON BOTH COPPER & PLASTIC CONTINUOUSLY LINE-MARKED WITH TUBE CONTENTS, ASTM SPECIFICATION, SIZE, & DESCENDING FOOTAGE. UNIQUE LOT NUMBER PRINTED ON BOTH COPPER & PLASTIC ALLOWING PRODUCT TO BE TRACED BACK TO ORIGIN AND TIME OF MANUFACTURING. SERVICE TUBING SHALL BE AQUA SHIELD AS MANUFACTURED BY KAMCO PRODUCTS INC. OR APPROVED EQUAL.

BRamsdell 10:12:53 AM
 9/30/2022
 C:\2017\01113 C. Design\104667 HAM-75-3.84\Design\Roadway\Sheets\BU-24\Waterworks\104667_UP100.dgn



**** TEMPORARY AND PAVEMENT RESTORATION SHALL BE DONE IN ACCORDANCE WITH THE CONTRACT SPECIFICATIONS, SEE CITY OF CINCINNATI STANDARD DRAWINGS FOR PAVEMENT TYPICAL SECTION.**

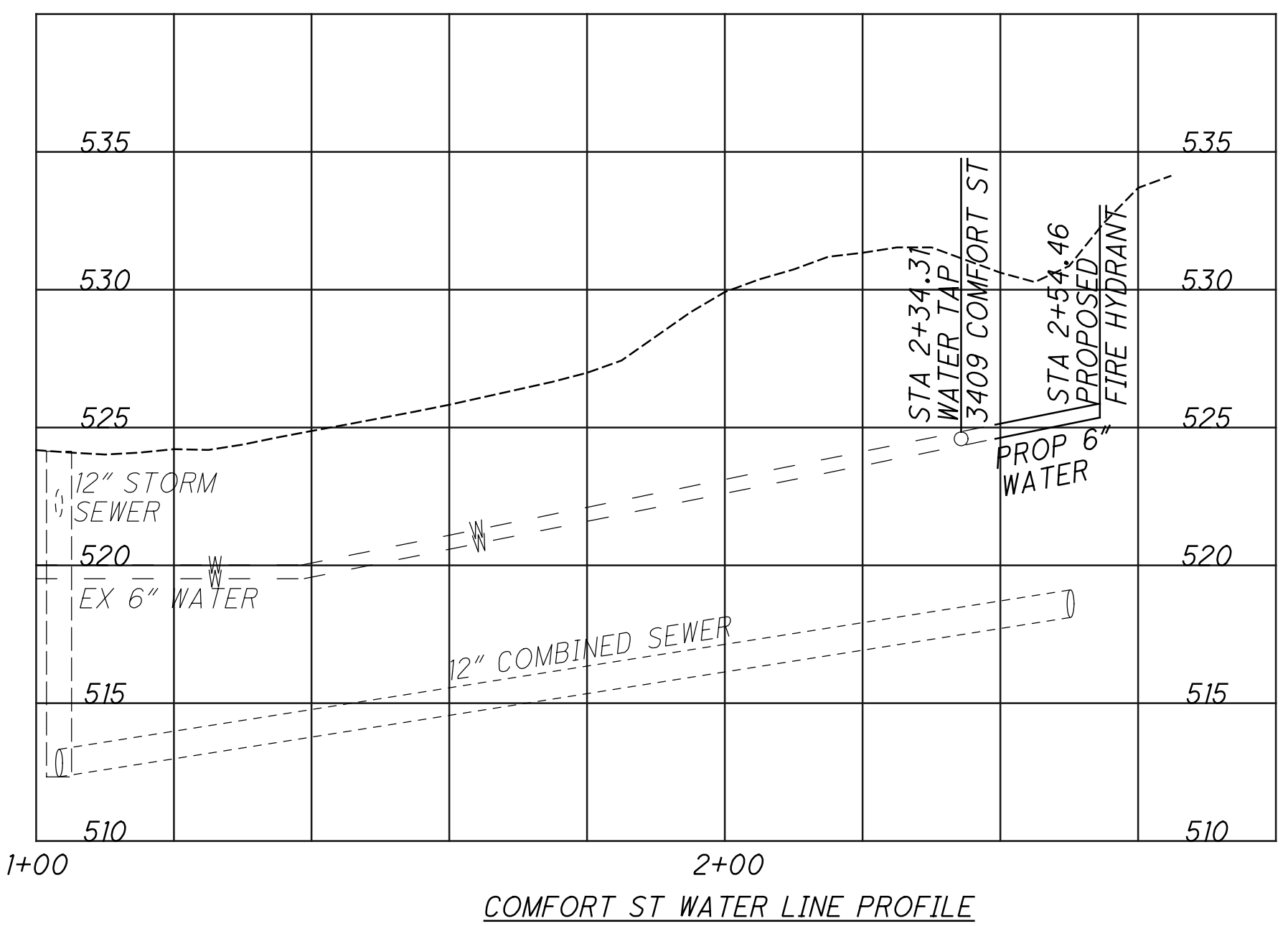
*** BACKFILL OF THE WATER MAIN AND BRANCH TRENCH SHALL BE DONE IN ACCORDANCE WITH GCWW SPECIFICATIONS. ALL WATER MAINS AND BRANCHES INSTALLED OUTSIDE OF THE PAVEMENT AREA SHALL UTILIZE GRANULAR BACKFILL IN LIEU OF THE CONTROL DENSITY FILL.**

CONTROLLED DENSITY FILL MUST MEET BOTH HAMCIN: CLSM-CDF PERFORMANCE SPECIFICATION AND O.D.O.T. SPECIFICATION. ALL FLOWABLE FILL PRODUCTS SHALL MEET THE REQUIREMENTS OF THE CURRENT GCWW MATERIALS TESTING AND SPECIFICATIONS FOR FLOWABLE FILL PRODUCTS (DATED 2/8/99).

PLEASE NOTE THAT THE GCWW REQUIREMENT IS IN ADDITION TO HAMCIN SPECIFICATIONS FOR FLOWABLE FILL PRODUCTS. A COPY OF THE G.C.W.W. REQUIREMENT IS AVAILABLE AT THE GCWW ENGINEERING OFFICE LOCATED AT 4747 SPRING GROVE AVENUE. CONTACT THE SUPERVISOR OF INSPECTION AT 591-7870.

PRIOR TO THE START OF CONSTRUCTION, THE CONTRACTOR SHALL SUBMIT THE NECESSARY CONTROLLED DENSITY FILL COMPLIANCE DOCUMENTATION FOR REVIEW AND APPROVAL BY THE GCWW

MAINTAIN TRAFFIC PER OHIO MUTCD STANDARDS



GCWW NOTE:
 ALL FIELD LAYOUT OF WATER MAIN PIPE AND SPECIALS SHALL BE THE RESPONSIBILITY OF THE CONTRACTOR AND SHALL BE PERFORMED BY A LICENSED SURVEYOR.



WATER WORKS PLAN
SASSAFRAS ST. AND COMFORT ST.

HAM-75-3.84

