

SHEET NUM.										PART.			ITEM	ITEM EXT	GRAND TOTAL	UNIT	DESCRIPTION	SEE SHEET NO.
P.011	P. 023	P.058	P.059	P.063	P.080	P.086				01/NHS/13	02/S>2/13	03/S>2/05						
ROADWAY																		
LS										LS	LS		201	11001	LS		CLEARING AND GRUBBING, AS PER PLAN	P.011
	610	5,568								3,704	1,864		202	23000	5,568	SY	PAVEMENT REMOVED	
		777								658	729		202	30700	1,387	FT	CONCRETE BARRIER REMOVED	
		642								642			202	35100	642	FT	PIPE REMOVED, 24" AND UNDER	
		1,435								861	574		202	38000	1,435	FT	GUARDRAIL REMOVED	
		1								1			202	42000	1	EACH	ANCHOR ASSEMBLY REMOVED, TYPE A	
		1								1			202	42010	1	EACH	ANCHOR ASSEMBLY REMOVED, TYPE E	
		9								6	3		202	47000	9	EACH	BRIDGE TERMINAL ASSEMBLY REMOVED	
		2								2			202	58000	2	EACH	MANHOLE REMOVED	
		2								2			202	58100	2	EACH	CATCH BASIN REMOVED	
		2								2			202	58200	2	EACH	INLET REMOVED	
		36									36		202	75000	36	FT	FENCE REMOVED	
					638	1,212				1,451	399		203	10000	1,850	CY	EXCAVATION	
					76	86				104	58		203	20000	162	CY	EMBANKMENT	
				974						518	456		204	10000	974	SY	SUBGRADE COMPACTION	
					1,952					1,306	646		204	13000	1,952	CY	EXCAVATION OF SUBGRADE (12" DEEP)	
					1,952					1,306	646		204	30020	1,952	CY	GRANULAR MATERIAL, TYPE C	
					3					2	1		204	45000	3	HOUR	PROOF ROLLING	
					5,856					3,919	1,937		204	50000	5,856	SY	GEOTEXTILE FABRIC	
			1,062.5							525	537.5		606	15050	1,062.5	FT	GUARDRAIL, TYPE MGS	
			3							3			606	26150	3	EACH	ANCHOR ASSEMBLY, MGS TYPE E [MASH 2016]	
			1								1		606	26550	1	EACH	ANCHOR ASSEMBLY, MGS TYPE T	
			7							5	2		606	35002	7	EACH	MGS BRIDGE TERMINAL ASSEMBLY, TYPE 1	
			4							2	2		606	35102	4	EACH	MGS BRIDGE TERMINAL ASSEMBLY, TYPE 2	
			36								36		607	23000	36	FT	FENCE, TYPE CLT	
			36								36		607	70000	36	FT	FENCELINE SEEDING AND MULCHING	
			78							1.5	76.5		622	10140	78	FT	CONCRETE BARRIER, SINGLE SLOPE, TYPE C1	
			20								20		622	10141	20	FT	CONCRETE BARRIER, SINGLE SLOPE, TYPE C1, AS PER PLAN	P.093
			212							212			622	10160	212	FT	CONCRETE BARRIER, SINGLE SLOPE, TYPE D	
			4							2	2		622	10200	4	EACH	BARRIER TRANSITION	P.099
			2							2			622	25000	2	EACH	CONCRETE BARRIER END SECTION, TYPE D	
			7							4	3		622	25014	7	EACH	CONCRETE BARRIER, END ANCHORAGE, REINFORCED, TYPE C1	
			1								1		622	25015	1	EACH	CONCRETE BARRIER, END ANCHORAGE, REINFORCED, TYPE C1, AS PER PLAN A	P.093
			1							1			622	25015	1	EACH	CONCRETE BARRIER, END ANCHORAGE, REINFORCED, TYPE C1, AS PER PLAN B	P.093
			2							2			622	25050	2	EACH	CONCRETE BARRIER, END ANCHORAGE, REINFORCED, TYPE D	
	950		385							899	436		622	90000	1,335	FT	BARRIER, MISC.: MC-9.3, TYPE A	P.098
										LS	LS		SPECIAL	69098400	LS		CONSULTANT FOR CONCRETE QUALITY CONTROL INCLUDING TESTING AND INSPECTION	P.012
										LS	LS		878	25000	LS		INSPECTION AND COMPACTION TESTING OF UNBOUND MATERIALS	

GENERAL SUMMARY

DESIGN AGENCY
TRANSYSTEMS
 1100 SUPERIOR AVE. E. STE 1000
 CLEVELAND, OHIO 44114

DESIGNER
MSW

REVIEWER
GHM 08/22/23

PROJECT ID
110570

SHEET TOTAL
 P.054 | 208

REF NO.	SHEET NO.	ALIGNMENT	STATION TO STATION		SIDE	PLANIMETERED AREAS	202	202	202	202	202	202	202	202	202	202	202						
			PAVEMENT REMOVED SY	CONCRETE BARRIER REMOVED FT			PIPE REMOVED, 24" AND UNDER FT	GUARDRAIL REMOVED FT	BRIDGE TERMINAL ASSEMBLY REMOVED EACH	ANCHOR ASSEMBLY REMOVED, TYPE E EACH	ANCHOR ASSEMBLY REMOVED, TYPE A EACH	MANHOLE REMOVED EACH	CATCH BASIN REMOVED EACH	INLET REMOVED EACH	FENCE REMOVED FT								
R-1	P.065	US-50	93+00.00	94+17.80	LT	3,940.70	438																
R-2	P.065	US-50	93+00.00	94+17.80	RT	3,831.36	426																
R-3	P.065	US-50	93+00.00	94+17.80	LT/RT	1,496.52	166																
R-4	P.065	US-50	90+38.13	94+25.04	RT				381	1													
R-5	P.065	US-50	93+00.00	94+44.35	CL			124.4															
R-13	P.067	US-50	98+74.00	99+98.00	CL			124.0															
R-14	P.067	US-50	98+67.73	98+77.21	RT																36		
R-15	P.067	US-50	99+01.12	99+98.00	LT	3,126.85	347																
R-16	P.067	US-50	99+01.12	99+98.00	RT	3,132.95	348																
R-17	P.067	US-50	99+01.12	99+98.00	LT/RT	1,250.50	139																
R-21	P.067	US-50	98+98.32	100+69.44	LT				174	1													
R-22	P.067	US-50	98+99.80	101+12.54	RT				211	2													
R-23	P.067	US-50	100+90.64	103+38.73	LT				253	1													
R-24	P.067	US-50	101+93.30	103+82.32	RT				186	2													
R-33	P.069	US-50	103+05.00	103+77.68	CL			52.7															
R-37	P.069	US-50	103+05.00	103+48.80	LT	1,551.86	172																
R-38	P.069	US-50	103+05.00	103+73.07	RT	2,557.07	284																
R-39	P.069	US-50	103+05.00	103+55.47	LT/RT	1,189.98	132																
R-40	P.069	US-50	105+63.24	106+15.00	LT	1,887.41	210																
R-41	P.069	US-50	105+93.07	106+48.00	RT	1,935.27	215																
R-42	P.069	US-50	105+84.77	106+48.00	LT/RT	1,387.62	154																
R-43	P.069	US-50	105+54.92	106+82.74	LT				125	1	1												
R-44	P.069	US-50	103+66.00	103+66.00	CL																1		
R-45	P.069	US-50	105+67.00	105+57.00	LT																		
R-46	P.069	US-50	105+88.00	105+67.00	CL																1		
R-47	P.069	US-50	105+98.00	106+48.00	CL			50.0															
R-53	P.071	RAMPS M & L	1+96.31	3+02.76	RT				105	1		1											
R-54	P.071	RAMPS M & L	3+00.00	4+49.00	LT								1										
R-55	P.071	RAMPS M & L	0+25.00	3+00.00	LT								1										
R-56	P.071	RAMPS M & L	2+35.00	3+00.00	LT																1		
R-57	P.071	RAMPS M & L	0+25.00	4+50.00	CL																		
R-58	P.071	RAMPS M & L	0+25.00	4+50.00	LT/RT	22,822.77	2536																
TOTALS CARRIED TO GENERAL SUMMARY							5568	777	642	1435	9	1	1	2	2	2	36						

REMOVAL ESTIMATED QUANTITIES

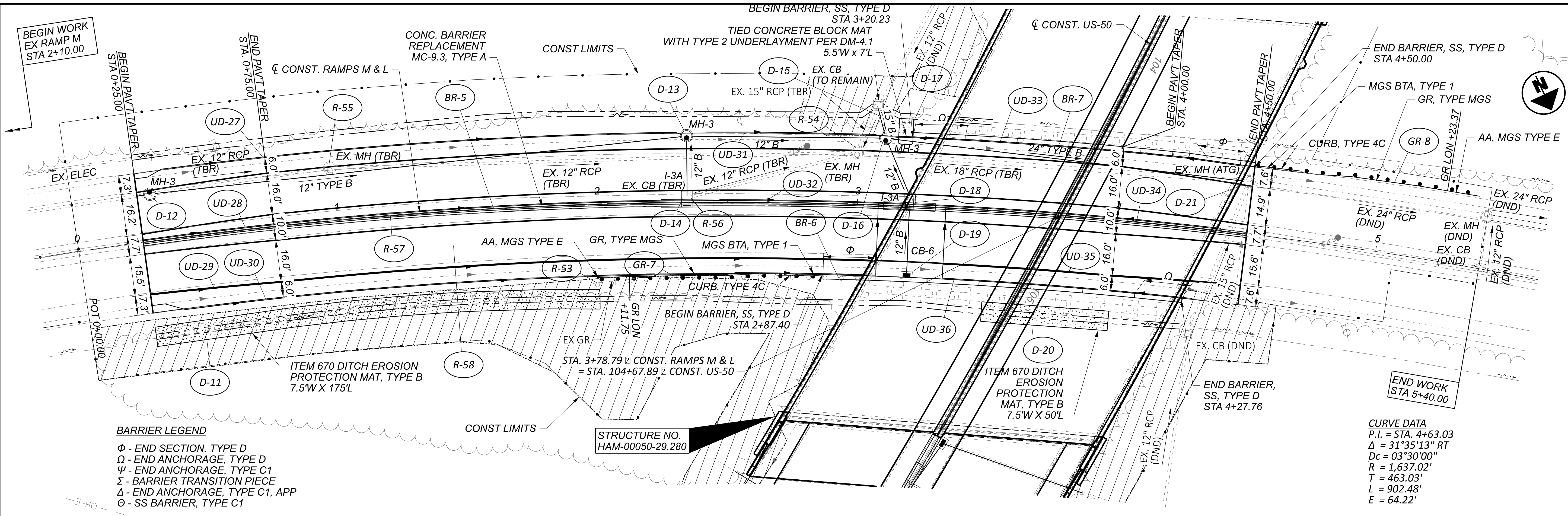
DESIGN AGENCY
TRANSYSTEMS
 1100 SUPERIOR AVE. E. STE 1000
 CLEVELAND, OHIO 44114

DESIGNER
MSW

REVIEWER
GHM 08/22/23

PROJECT ID
110570

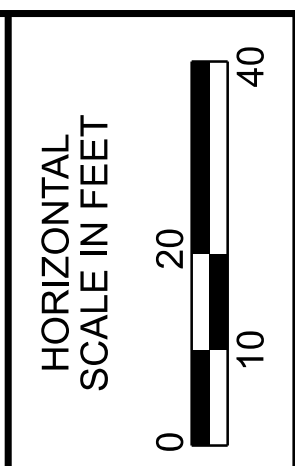
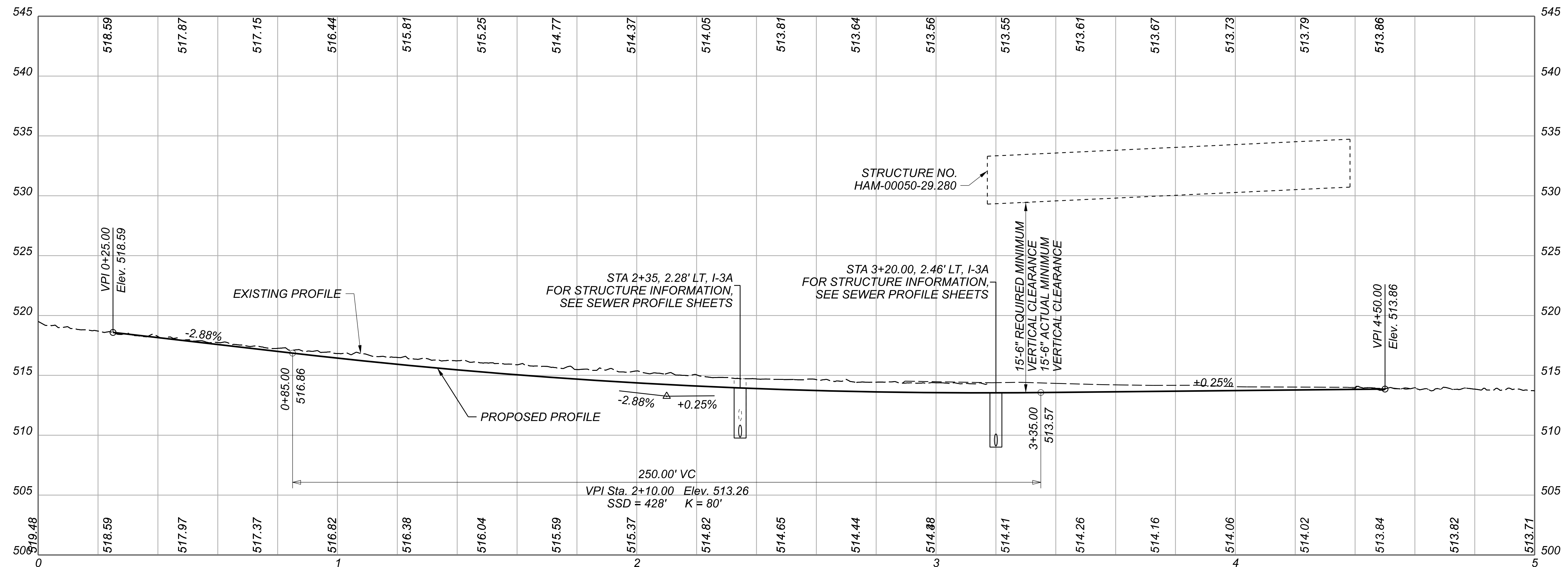
SHEET TOTAL
P.058 | 208



BARRIER LEGEND
 Φ - END SECTION, TYPE D
 Ω - END ANCHORAGE, TYPE D
 Ψ - END ANCHORAGE, TYPE C1
 Σ - BARRIER TRANSITION PIECE
 Δ - END ANCHORAGE, TYPE C1, APP
 Θ - SS BARRIER, TYPE C1

AREA OF SUITABLE WOODED HABITAT FOR ENDANGERED BAT SPECIES. FOR DETAILS, SEE SHEET P.011.

CURVE DATA
 P.I. = STA. 4+63.03
 Δ = 31°35'13" RT
 Dc = 03°30'00"
 R = 1,637.02'
 T = 463.03'
 L = 902.48'
 E = 64.22'



**PLAN AND PROFILE
 RAMPS M & L**