

MODEL: Sheet PAPER: 34x22 (in.) DATE: 1/29/2024 TIME: 12:09:22 PM USER: mswhitt
 p:\hqp\m01\ae-transyscorp\proj\1\Documents\Projects_2020\CL402402200084\Agency_Folders\400-Engineering\Roadway\Sheets\110570_GY001.dgn

EXISTING LEGEND

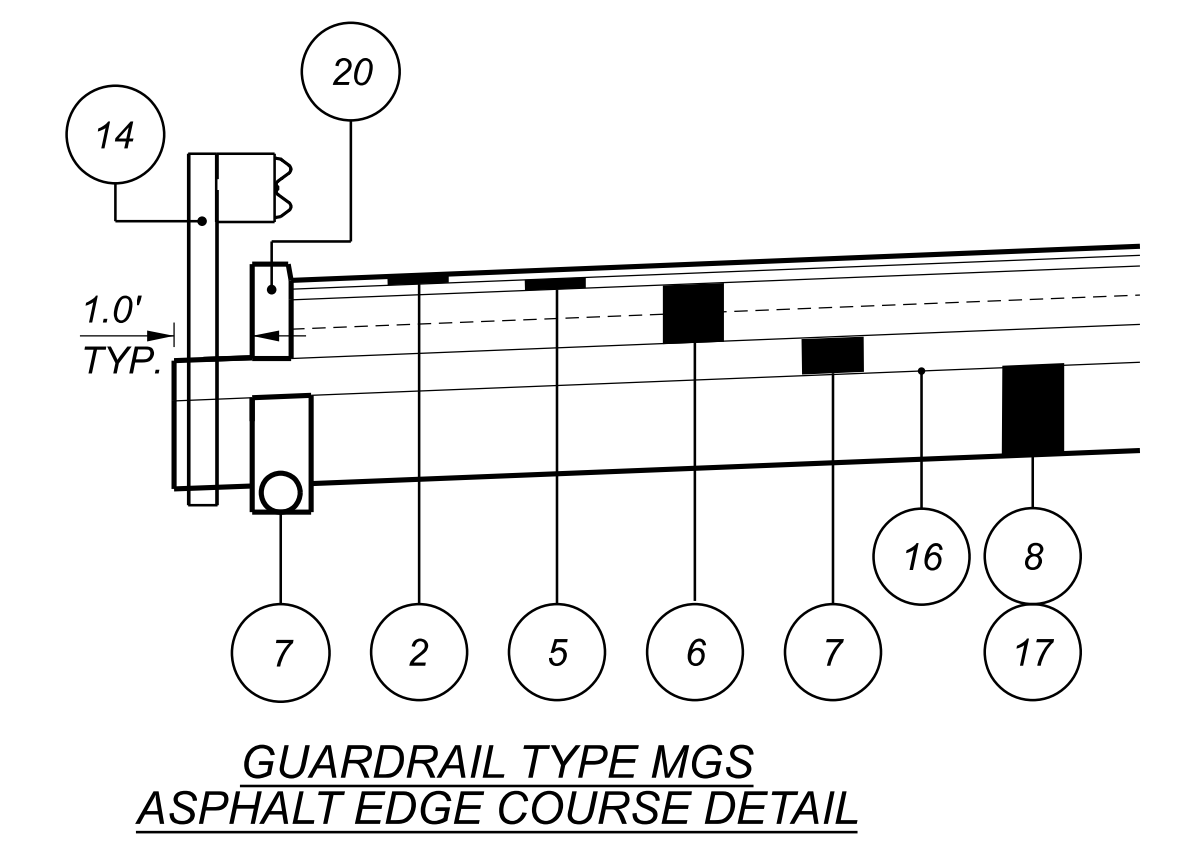
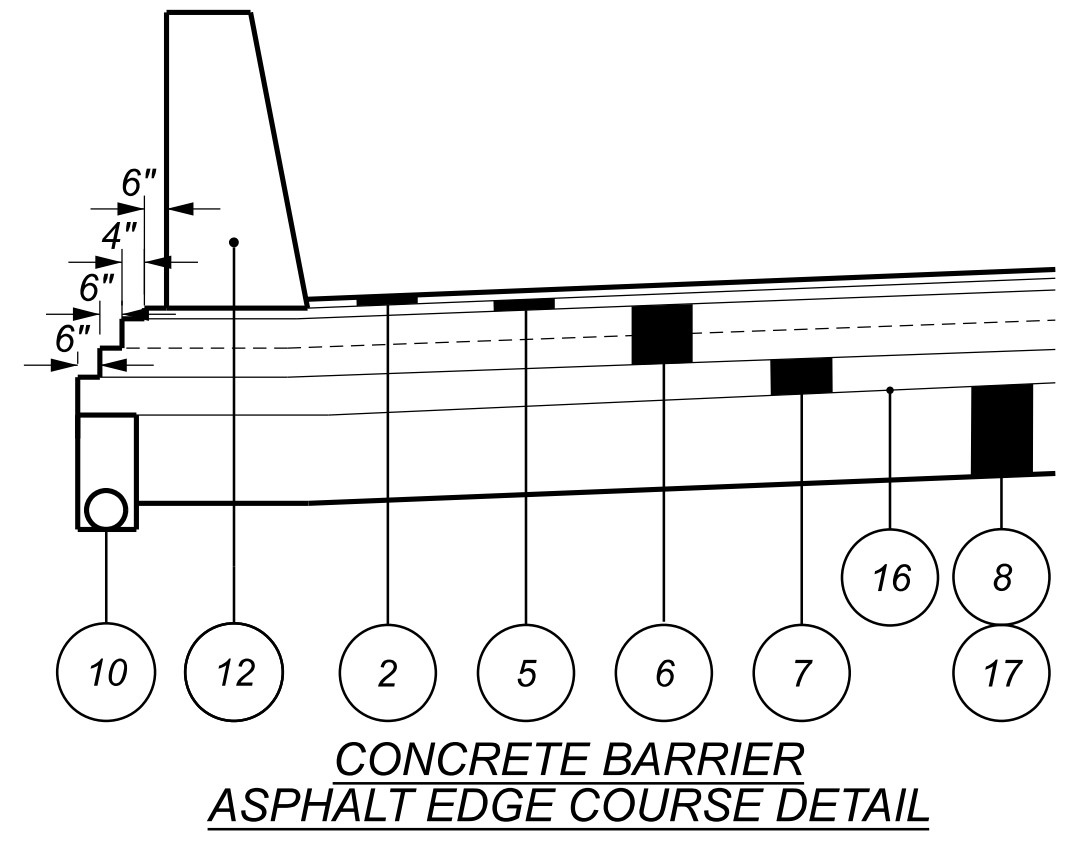
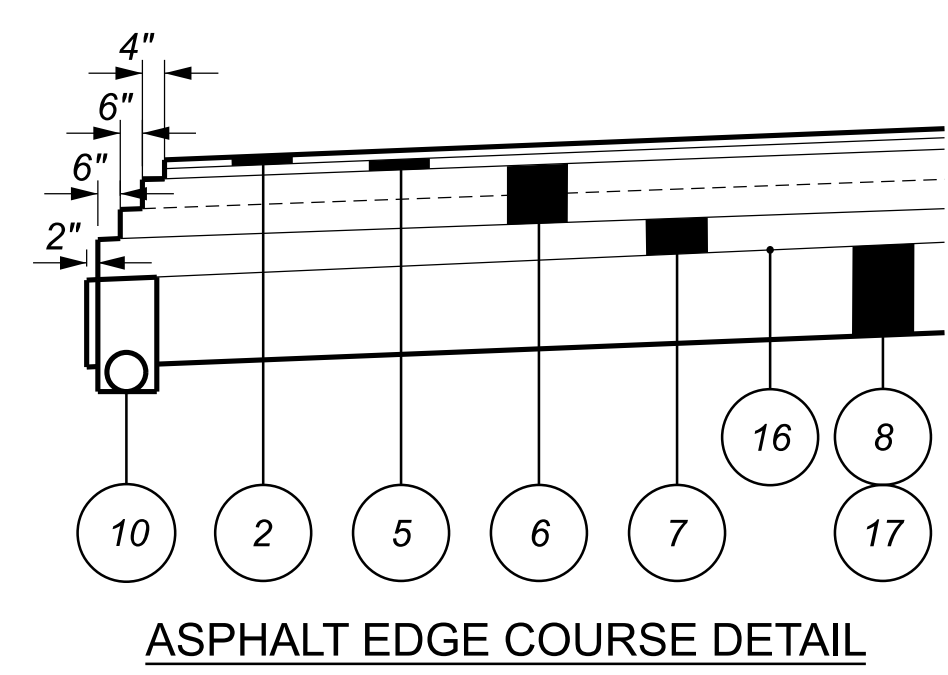
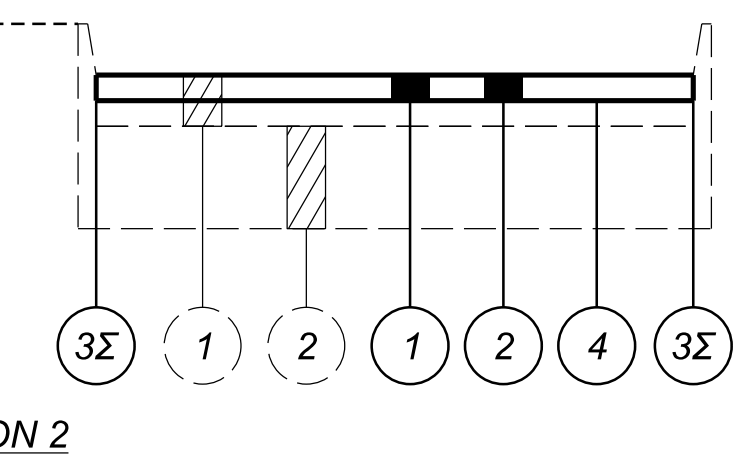
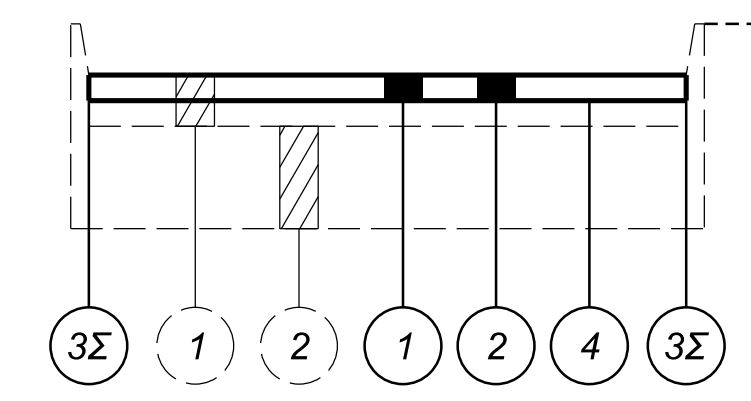
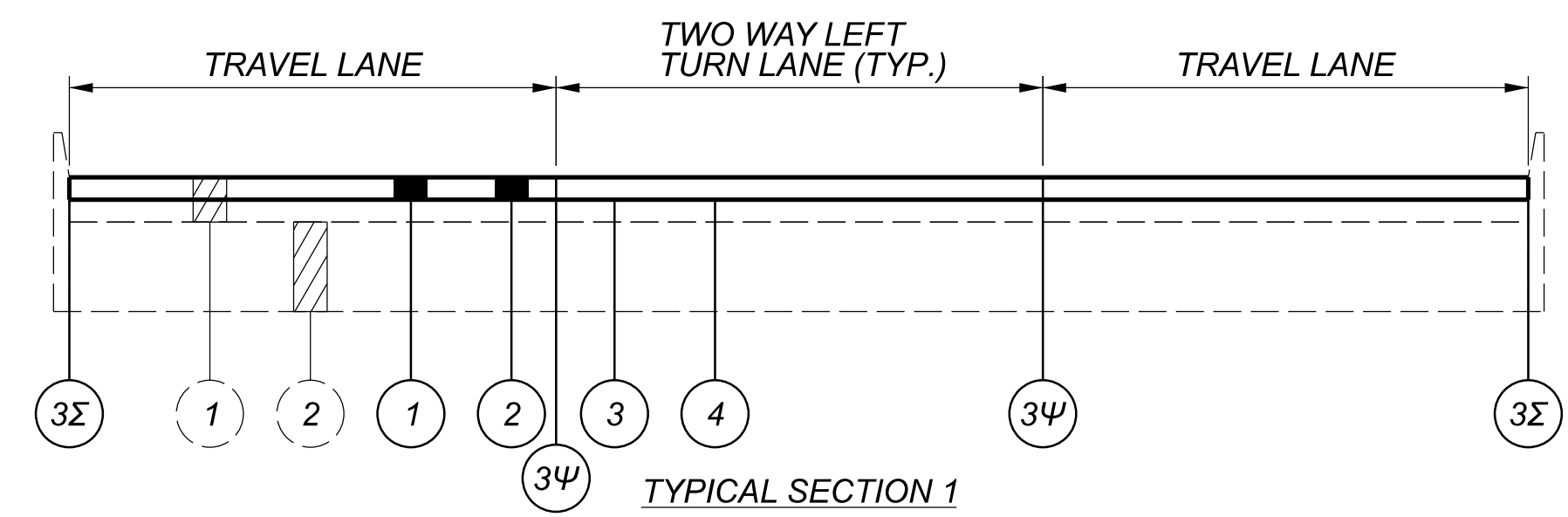
- ① 3"± EXISTING ASPHALT PAVEMENT
- ② 7-9"± EXISTING CONCRETE PAVEMENT

LEGEND

- ① ITEM 254 - PAVEMENT PLANING, ASPHALT CONCRETE (1.5" THICK)
- ② ITEM 442 - 1-1/2" ASPHALT CONCRETE SURFACE COURSE, 12.5 MM, TYPE A (446)
- ③ ITEM 872 - VOID REDUCING ASPHALT MEMBRANE (VRAM)
- ④ ITEM 407 - NON TRACKING TACK COAT (0.06 or 0.09 GAL/SY, PER CMS TABLE 407.06-1)
- ⑤ ITEM 442 - 1-3/4" ASPHALT CONCRETE INTERMEDIATE COURSE, 12.5 MM, TYPE A (446)
- ⑥ ITEM 301 - 9" ASPHALT CONCRETE BASE, PG64-22 (449) (PLACE IN 2 LIFTS)
- ⑦ ITEM 304 - 6" AGGREGATE BASE
- ⑧ ITEM 204 - EXCAVATION OF SUBGRADE, 12 INCHES DEEP
- ⑨ ITEM 422 - SINGLE SLOPE CONCRETE BRIDGE RAILING
- ⑩ ITEM 605 - 6" BASE PIPE UNDERDRAIN
- ⑪ ITEM 204 - PROOF ROLLING
- ⑫ ITEM 622 - CONCRETE BARRIER, SINGLE SLOPE, TYPE D
- ⑬ ITEM 622 - BARRIER, MISC.: MC-9.3, TYPE A
- ⑭ ITEM 606 - GUARDRAIL, TYPE MGS
- ⑮ APPROACH SLAB (T = 15")
- ⑯ ITEM 204 - GEOTEXTILE FABRIC
- ⑰ ITEM 204 - GRANULAR MATERIAL, TYPE C
- ⑱ ITEM 622 - CONCRETE BARRIER, SINGLE SLOPE, TYPE C1
- ⑲ ITEM 204 - SUBGRADE COMPACTION
- ⑳ ITEM 609 - CURB, TYPE 4C

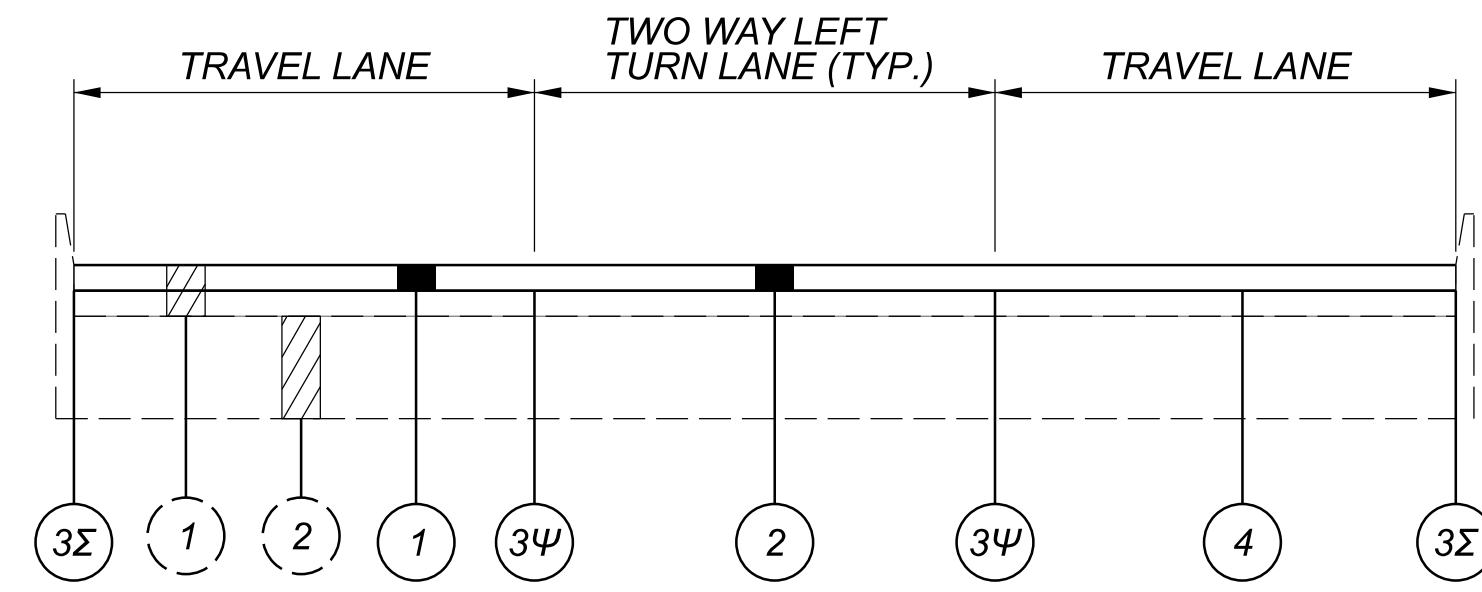
Ψ - APPLY FULL WIDTH AND FULL RATE AS PER VRAM APPLICATION REQUIREMENTS IN ODOT SS 872, TABLE 872.04-1. (LOCATIONS ARE APPROXIMATELY AS SHOWN IN THE TYPICAL SECTION DETAILS. ACTUAL LOCATIONS IN THE FIELD WILL BE SLIGHTLY OFF THE LANE LINES.)

Σ - APPLY HALF WIDTH AND HALF RATE AS PER VRAM APPLICATION REQUIREMENTS IN ODOT SS 872, TABLE 872.04-1

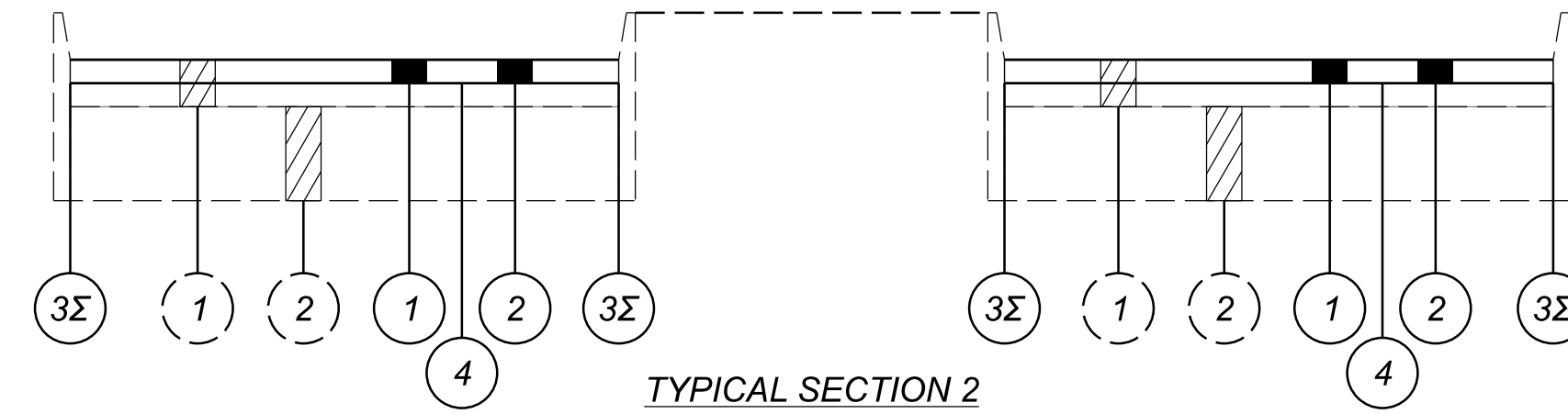


SEGMENT	LOG POINT TO LOG POINT	LENGTH		AVG WIDTH	TYPICAL	PAVEMENT AREA	251		252		254		407		442		872		632		644		644		644		644		644	
		MILES	FT				CY	SY	FT	SY	FT	SY	GAL	CY	FT	EACH	FT	MILE	MILE	FT	FT	FT	FT	FT	FT	EACH	FT	EACH	FT	FT
US-50 SLM																														
1	29.31 TO 29.35	0.04	211	110.0	1	2581	11	129	774	2581	258	232.3	107.6	2112	SEE TRAFFIC CONTROL SUBSUMMARY OF SEGMENT 1 FOR THE QUANTITIES WITHIN THESE SLM POINTS.															
1	29.35 TO 29.45	0.10	528	84.0	1	4928	21	246	1478	4928	493	443.5	205.3	4224																
1	29.45 TO 29.46	0.01	53	100.0	1	587	2	29	176	587	59	52.8	24.4	475																
1	29.46 TO 29.53	0.07	370	110.0	1	4517	19	226	1355	4517	452	406.6	188.2	3696																
1	29.53 TO 29.59	0.06	317	100.0	1	3520	15	176	1056	3520	352	316.8	146.7	2851																
1	29.59 TO 29.75	0.16	845	84.0	1	7885	33	394	2365	7885	788	709.6	328.5	6758																
1	29.75 TO 29.79	0.04	211	56.0	1	1314	5	66	394	1314	131	118.3	54.8	1056																
1	29.79 TO 29.85	0.06	317	30.0	2	1056	4	53	317	1056	106	95.0	44.0	634	1	150	0.12	0.06	122	25	111	64	3	297	0	0	0	0		
1	29.85 TO 29.86	0.01	53	44.0	1	258	1	13	77	258	26	23.2	10.8	211	0	0	0.00	0.00	0	0	0	0	0	0	0	0	0	0		
1	29.86 TO 29.92	0.06	317	31.0	2	1091	5	55	327	1091	109	98.2	45.5	634	0	0	0.00	0.04	50	0	0	0	1	0	1	0	0	0		
1	29.92 TO 29.94	0.02	106	38.0	1	446	2	22	134	446	45	40.1	18.6	422	0	0	0.00	0.09	0	0	84	55	0	0	1	0	0	0		
1	29.94 TO 29.95	0.01	53	32.0	2	188	1	9	56	188	19	16.9	7.8	106	0	0	0.00	0.00	0	0	0	0	0	0	0	0	0	0		
1	29.95 TO 29.99	0.04	211	40.0	1	939	4	47	282	939	94	84.5	39.1	845	0	0	0.00	0.05	40	0	84	66	1	0	3	0	0	0		
1	29.99 TO 30.02	0.03	158	31.0	2	546	2	27	164	546	55	49.1	22.7	317	0	0	0.00	0.00	0	0	75	50	0	0	1	0	0	0		
1	30.02 TO 30.05	0.03	158	37.0	1	651	3	33	195	651	65	58.6	27.1	634	0	0	0.00	0.11	0	0	0	0	0	0	1	0	0	0		
1	30.05 TO 30.07	0.02	106	24.0	2	282	1	14	84	282	28	25.3	11.7	211	0	0	0.00	0.00	0	0	0	0	0	0	2	0	0	0		
1	30.07 TO 30.08	0.01	53	40.0	1	235	1	12	70	235	23	21.1	9.8	211	0	0	0.00	0.00	65	0	0	0	0	0	0	0	0	0		
1	30.08 TO 30.10	0.02	106	28.0	2	329	1	16	99	329	33	29.6	13.7	211	1	150	0.00	0.06	0	26	77	56	1	0	1	0	0	0		
1	30.10 TO 30.11	0.01	53	38.0	1	223	1	11	67	223	22	20.1	9.3	211	0	0	0.00	0.00	0	12	0	0	0	0	0	0	0	0		
1	30.11 TO 30.14	0.03	158	28.0	2	493	2	25	148	493	49	44.4	20.5	317	0	0	0.00	0.03	0	0	74	0	0	0	2	0	0	0		
1	30.14 TO 30.17	0.03	158	38.0	1	669	3	33	201	669	67	60.2	27.9	634	0	0	0.00	0.00	0	0	0	0	0	0	2	0	0	0		
1	30.17 TO 30.19	0.02	106	28.0	2	329	1	16	99	329	33	29.6	13.7	211	0	0	0.00	0.00	0	0	0	0	0	0	0	0	0	0		
1	30.19 TO 30.21	0.02	106	40.0	1	469	2	23	141	469	47	42.2	19.6	422	0	0	0.00	0.09	37	0	82	60	1	0	5	0	0	0		
1	30.21 TO 30.22	0.01	53	28.0	2	164	1	8	49	164	16	14.8	6.8	106	0	0	0.00	0.00	0	0	0	0	0	0	0	0	0			
1	30.22 TO 30.27	0.05	264	44.0	1	1,291	5	65	387	1,291	129	116.2	54	1056	0	0	0.02	0.04	30	0	60	60	3	0	2	24	0	0		
SUBTOTAL							145.8	1,749.4	10,496.6	34,988.8	3,498.9	3,149.0	1,457.9	28,564.8	2	300	0.14	0.57	344	63	647	411	10	297	21	24	24	24	24	
TOTAL CARRIED TO GENERAL SUMMARY							146	1,749	10,497	34,989	3,499	3,149	1,458	28,565	2	300	0.14	0.57	344	63	647	411	10	297	21	24	24	24	24	

- ① 3"± EXISTING ASPHALT PAVEMENT
- ② 7-9"± EXISTING CONCRETE PAVEMENT
- ① ITEM 254 - PAVEMENT PLANING, ASPHALT CONCRETE (1.5" THICK)
- ② ITEM 442 - 1-1/2" ASPHALT CONCRETE SURFACE COURSE, 12.5 MM, TYPE A (446)
- ③ ITEM 872 - VOID REDUCING ASPHALT MEMBRANE (VRAM)
- ④ ITEM 407 - NON-TRACKING TACK COAT (0.06 OR 0.09 GAL/SY, PER CMS TABLE 407.06-1)



TYPICAL SECTION 1



TYPICAL SECTION 2

Ψ - APPLY FULL WIDTH AND FULL RATE AS PER VRAM APPLICATION REQUIREMENTS IN ODOT SS 872, TABLE 872.04-1 (LOCATIONS ARE APPROXIMATELY AS SHOWN IN THE TYPICAL SECTION DETAILS. ACTUAL LOCATIONS IN THE FIELD WILL BE SLIGHTLY OFF THE LANE LINES.)

Σ - APPLY HALF WIDTH AND HALF RATE AS PER VRAM APPLICATION REQUIREMENTS IN ODOT SS 872, TABLE 872.04-1

SEGMENT	ROUTE	LOG POINT TO LOG POINT	LENGTH		TYPICAL	EXISTING PAVEMENT TYPE	PAVEMENT AREA	251	252	252	254	254	407	442	872	621	621	644	644	644	644	644	644			
			PARTIAL DEPTH PAVEMENT REPAIR (442)	FULL DEPTH RIGID PAVEMENT REMOVAL AND FLEXIBLE REPLACEMENT, AS PER PLAN				FULL DEPTH PAVEMENT SAWING	PAVEMENT PLANING, ASPHALT CONCRETE (1.5")	PATCHING PLANED SURFACE	NON-TRACKING TACK COAT	1.5" ASPHALT CONCRETE SURFACE COURSE, 12.5 MM, TYPE A (446)	VOID REDUCING ASPHALT MEMBRANE (VRAM)	RPM	RAISED PAVEMENT MARKER REMOVED	EDGE LINE, 6"	LANE LINE, 6"	CENTER LINE	CHANNELIZING LINE, 12"	STOP LINE	LANE ARROW					
		MILE	MILE	FT	FT		SY	CY	SY	FT	SY	SY	GAL	CY	FT	EACH	EACH	MILE	MILE	MILE	FT	EACH	EACH			
2	US-50	34.24 TO 34.40	0.16	845	39.50	1	ASPHALT	3709	21	186	1116	3709	371	334	155	3380	16	16	0.32	0	0.32	0	0	0		
		34.40 TO 34.44	0.04	212	30.25	2	ASPHALT	713	4	36	216	713	72	65	30	848	2	2	0.08	0	0.08	0	0	0		
		34.44 TO 34.53	0.09	476	39.00	1	ASPHALT	2063	12	104	624	2063	207	186	86	1904	16	16	0.16	0	0.16	110	0	2		
		34.53 TO 34.56	0.03	159	30.00	2	ASPHALT	530	3	27	162	530	53	48	23	636	2	2	0.06	0	0.06	0	0	0		
		34.56 TO 34.60	0.04	212	40.25	1	ASPHALT	949	6	48	288	949	95	86	40	848	8	8	0.08	0	0.06	0	0	2		
		34.60 TO 34.64	0.04	212	28.00	2	ASPHALT	660	4	33	198	660	66	60	28	848	2	2	0.08	0	0.08	0	0	0		
		34.64 TO 34.79	0.15	792	42.25	1	ASPHALT	3718	21	186	1116	3718	372	335	155	3168	26	26	0.28	0	0.28	0	0	2		
		34.79 TO 34.84	0.05	265	30.50	2	ASPHALT	899	5	45	270	899	90	81	38	1060	2	2	0.10	0	0.10	0	0	0		
		34.84 TO 34.91	0.07	370	40.75	1	ASPHALT	1676	10	84	504	1676	168	151	70	1480	10	10	0.14	0	0.12	0	0	2		
		34.91 TO 34.92	0.01	53	30.75	2	ASPHALT	182	2	10	60	182	19	17	8	212	2	2	0.02	0	0.02	0	0	0		
		34.92 TO 34.93	0.01	53	39.75	1	ASPHALT	235	2	12	72	235	24	22	10	212	2	2	0.02	0	0.02	0	0	0		
		34.93 TO 34.94	0.01	53	30.25	2	ASPHALT	179	1	9	54	179	18	17	8	212	2	2	0.02	0	0.02	0	0	0		
		34.94 TO 35.07	0.13	687	42.00	1	ASPHALT	3206	18	161	966	3206	321	289	134	2748	14	14	0.23	0	0.22	0	0	4		
		35.07 TO 35.08	0.01	53	29.00	2	ASPHALT	171	1	9	54	171	18	16	8	212	2	2	0.02	0	0.02	0	0	0		
		35.08 TO 35.14	0.06	317	40.25	1	ASPHALT	1418	8	81	486	1418	142	128	60	1268	10	10	0.12	0	0.12	0	0	0		
		35.14 TO 35.15	0.01	53	29.75	2	ASPHALT	176	1	9	54	176	18	16	8	212	2	2	0.02	0	0.02	0	0	0		
		35.15 TO 35.20	0.05	265	39.50	1	ASPHALT	1164	7	59	354	1164	117	105	49	1060	6	6	0.10	0	0.10	0	0	0		
		35.20 TO 35.21	0.01	53	31.50	2	ASPHALT	186	2	10	60	186	19	17	8	212	2	2	0.02	0	0.02	0	0	0		
		35.21 TO 35.43	0.22	1162	40.75	1	ASPHALT	5262	30	264	1584	5262	527	474	220	4648	40	40	0.38	0.05	0.30	480	50	9		
		35.43 TO 35.47	0.04	212	28.25	2	ASPHALT	666	4	34	204	666	67	60	28	848	4	4	0.08	0	0.08	0	0	0		
35.47 TO 35.52	0.05	265	40.00	1	ASPHALT	1178	7	59	354	1178	118	107	50	1060	10	10	0.09	0	0.08	0	0	2				
35.52 TO 35.55	0.03	159	30.00	2	ASPHALT	530	3	27	162	530	53	48	23	636	2	2	0.06	0	0.04	0	0	2				
35.55 TO 35.64	0.09	476	39.75	1	ASPHALT	2103	12	106	636	2103	211	190	88	1904	8	8	0.18	0	0.18	0	0	0				
35.64 TO 35.66	0.02	106	31.50	2	ASPHALT	371	3	19	114	371	38	34	16	424	2	2	0.04	0	0.04	0	0	0				
35.66 TO 35.72	0.06	317	39.75	1	ASPHALT	1401	8	71	426	1401	141	127	59	1268	2	2	0.10	0	0.12	185	0	2				
SUBTOTAL																										
TOTALS CARRIED TO GENERAL SUMMARY								195	1,689	10,134	33,345	3,345	3,013	1,402	31,308	194	194	2.80	0.05	2.66	775	50	27			

HAM-US 50-29.00

MODEL: Sheet PAPER/DATE: 3/4/22 (in.) DATE: 1/29/2024 TIME: 12:09:27 PM USER: mswright
 p:\hpc\p\m\01-a-e-transyscorp.com\transyscorp-pw\1\Documents\Projects_2020\CL402402200084\Agency_Folders\400-Engineering\Roadway\Sheets\2LMN_Sheets\110570_C\001.dgn

TYPICAL SECTIONS (SEGMENT 2)

DESIGN AGENCY

2LMN

DESIGNER

MAK

REVIEWER

ALL 08/22/23

PROJECT ID

110570

SHEET TOTAL

P.009 208

SHEET NUM.											PART.			ITEM	ITEM EXT	GRAND TOTAL	UNIT	DESCRIPTION	SEE SHEET NO.
P.007	P.009	P.011	P.012	P.016	P.059	P.060	P.061	P.063	P.064		01/NHS/13	02/S>2/13	03/S>2/05						
			4								2	2		601	21050	4	SY	EROSION CONTROL TIED CONCRETE BLOCK MAT WITH TYPE 1 UNDERLAYMENT	
						5					5			601	21060	5	SY	TIED CONCRETE BLOCK MAT WITH TYPE 2 UNDERLAYMENT	
		2									1	1		659	00100	2	EACH	SOIL ANALYSIS TEST	
		190									178	12		659	00300	190	CY	TOPSOIL	
		1,708									1,604	104		659	10000	1,708	SY	SEEDING AND MULCHING	
		86									81	5		659	14000	86	SY	REPAIR SEEDING AND MULCHING	
		86									81	5		659	15000	86	SY	INTER-SEEDING	
		0.24									0.22	0.02		659	20000	0.24	TON	COMMERCIAL FERTILIZER	
		0.35									0.33	0.02		659	31000	0.35	ACRE	LIME	
		10									9.5	0.5		659	35000	10	MGAL	WATER	
		4									3.8	0.2		659	40000	4	MSF	MOWING	
						188					188			670	00720	188	SY	DITCH EROSION PROTECTION MAT, TYPE B	
							LS				LS	LS		832	15000	LS		STORM WATER POLLUTION PREVENTION PLAN	
							LS				LS	LS		832	15002	LS		STORM WATER POLLUTION PREVENTION INSPECTIONS	
							LS				LS	LS		832	15010	LS		STORM WATER POLLUTION PREVENTION INSPECTION SOFTWARE	
									107,210		36,451	70,759		832	30000	107,210	EACH	EROSION CONTROL	
																		DRAINAGE	
			20								10	10		605	13300	20	FT	6" UNCLASSIFIED PIPE UNDERDRAINS	
								3,216			2,006	1,210		605	14000	3,216	FT	6" BASE PIPE UNDERDRAINS	
								476			345	131		611	00510	476	FT	6" CONDUIT, TYPE F FOR UNDERDRAIN OUTLETS	
			50								25	25		611	01500	50	FT	6" CONDUIT, TYPE F	
											371			611	04400	371	FT	12" CONDUIT, TYPE B	
											98			611	04400	98	FT	12" CONDUIT, TYPE B, 706.02	
											22			611	04400	22	FT	12" CONDUIT, TYPE B, 707.42	
											14			611	05900	14	FT	15" CONDUIT, TYPE B	
											141			611	10400	141	FT	24" CONDUIT, TYPE B	
											2			611	98370	2	EACH	CATCH BASIN, NO. 6	
											1			611	99111	1	EACH	INLET, NO. 3 FOR SINGLE SLOPE BARRIER, TYPE C1, AS PER PLAN A	
											1			611	99111	1	EACH	INLET, NO. 3 FOR SINGLE SLOPE BARRIER, TYPE C1, AS PER PLAN B	
												1		611	99151	1	EACH	INLET ADJUSTED TO GRADE, AS PER PLAN	
											2			611	99500	2	EACH	INLET, MISC.: I-3A	
											3			611	99574	3	EACH	MANHOLE, NO. 3	
											1			611	99654	1	EACH	MANHOLE ADJUSTED TO GRADE	
			2								1	1		611	99710	2	EACH	PRECAST REINFORCED CONCRETE OUTLET	
			800								550	250		SPECIAL	69098100	800	FT	MISC: DRAINAGE SYSTEM CLEANING, 36" AND UNDER	
																		PAVEMENT	
		146											341	251	01030	341	CY	PARTIAL DEPTH PAVEMENT REPAIR (442)	
		1,749	195										3,438	252	01001	3,438	SY	FULL DEPTH RIGID PAVEMENT REMOVAL AND FLEXIBLE REPLACEMENT, AS PER PLAN	
		10,497	10,134										20,631	252	01500	20,631	FT	FULL DEPTH PAVEMENT SAWING	
		34,989	33,345			6				15,208	2,907	12,307	68,334	254	01000	83,548	SY	PAVEMENT PLANING, ASPHALT CONCRETE (1.5" DEEP)	
		3,499	3,345							1,521	290	1,231	6,844	254	01600	8,365	SY	PATCHING PLANED SURFACE	
										1,402	930	472		301	56000	1,402	CY	ASPHALT CONCRETE BASE, PG64-22, (449)	
										1,144	749	395		304	20000	1,144	CY	AGGREGATE BASE	
		3,149	3,013							2,102	770	1,332	6,162	407	20000	8,264	GAL	NON-TRACKING TACK COAT	
		1,458	1,402							882	294	588	2,860	442	10000	3,742	CY	ASPHALT CONCRETE SURFACE COURSE, 12.5 MM, TYPE A (446)	
										299	208	91		442	10080	299	CY	ASPHALT CONCRETE INTERMEDIATE COURSE, 12.5 MM, TYPE A (446)	
											36.5	36.5		609	24510	73	FT	CURB, TYPE 4-C	
		28,565	31,308			73				19,140	6,117	13,023	59,873	872	10000	79,013	FT	VOID REDUCING ASPHALT MEMBRANE (VRAM)	

GENERAL SUMMARY

DESIGN AGENCY
TRANSYSTEMS
 1100 SUPERIOR AVE. E. STE 1000
 CLEVELAND, OHIO 44114

DESIGNER
MSW

REVIEWER
GHM 08/22/23

PROJECT ID
110570

SHEET TOTAL
 P.055 | 208