

10) HAM-27-1408

(Colerain Ave. over I-275)

SFN 3101738

Westbound, Span 3, bay
8, over fast lane.



04/19/2023 11:09

11) HAM-27-1408

(Colerain Ave. over I-275)

SFN 3101738

Westbound, Span 3, bay
9, over middle lane.



04/19/2023 11:12



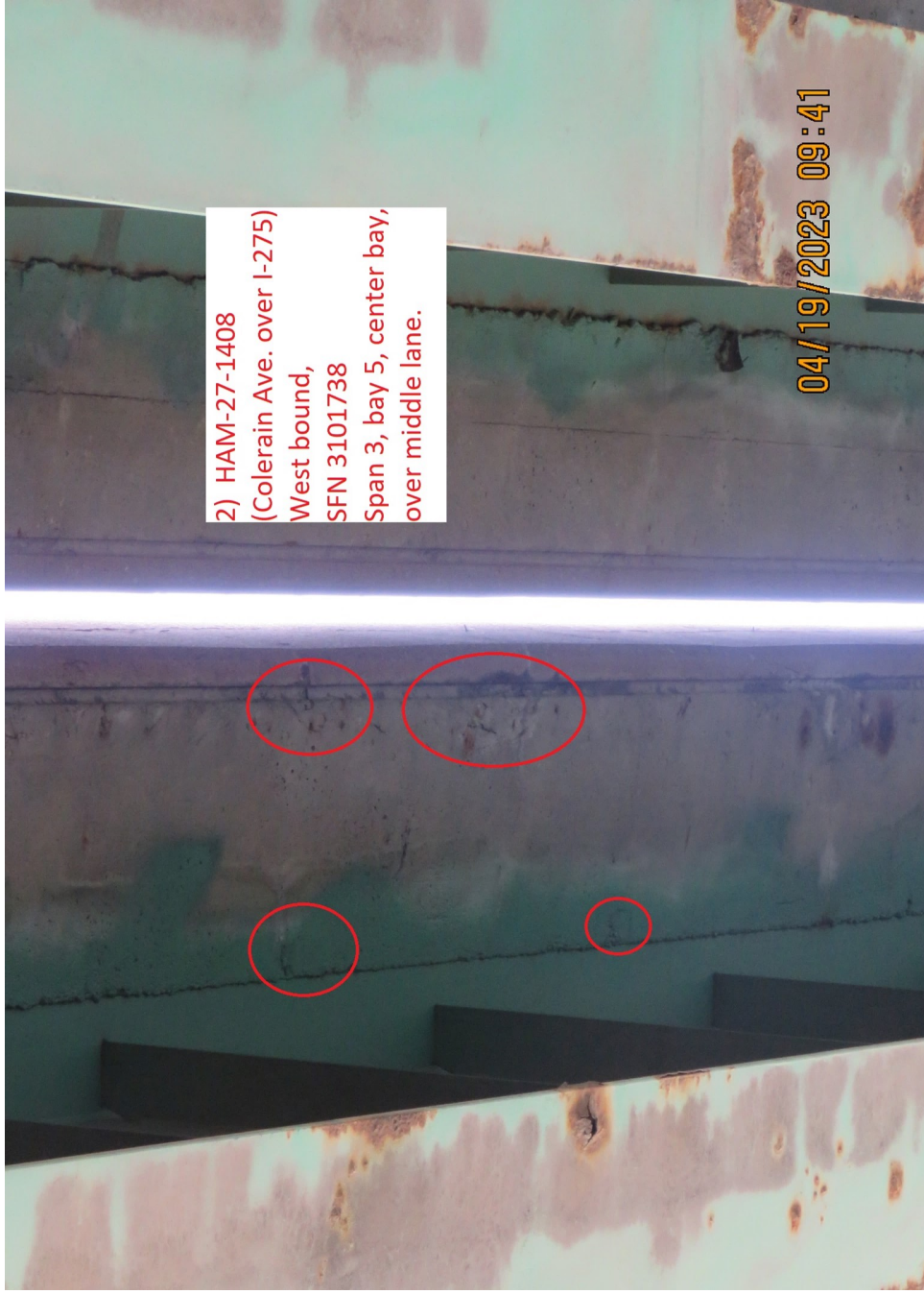
12) HAM-27-1408
(Colerain Ave. over I-275)
SFN 3101738
Westbound, Span 3, bay
5, over fast lane.

04/19/2023 11:14



1) HAM-27-1408
(Colerain Ave. over I-275)
West bound, Span 3, bay
5, center bay, over slow
lane.

04/19/2023 09:39



2) HAM-27-1408
(Colerain Ave. over I-275)
West bound,
SFN 3101738
Span 3, bay 5, center bay,
over middle lane.

04/19/2023 09:41



3) HAM-27-1408
(Colerain Ave. over I-275)
SFN 3101738
West bound, Span 3, bay
10, over slow lane.

04/19/2023 09:43

4) HAM-27-1408
(Colerain Ave. over I-275)
SFN 3101738
West bound, Span 3, bay
10, over middle lane



04/19/2023 09:43

7) HAM-27-1408
(Colerain Ave. over I-275)
SFN 3101738
Westbound, Span 3, bay
10, over fast lane.



04/19/2023 11:06

8) HAM-27-1408
(Colerain Ave. over I-275)
SFN 3101738
Westbound, Span 3, bay
9, over fast lane and
yellow line.



04/19/2023 11:08

9) HAM-27-1408
(Colerain Ave. over I-275)
SFN 3101738
Westbound, Span 3, bay
9, possible loose, over
fast lane.



04/19/2023 11:08