

STATE OF OHIO
DEPARTMENT OF HIGHWAYS

SPRINGFIELD - XENIA - CLARKSVILLE ROAD

S.H. 195 SECS "H & F (Pt.)"

GREENE COUNTY

XENIA TOWNSHIP

F.A.P. 339(2)

FED. RD. DIST. NO.	STATE	FED. AID PROJECT	FISCAL YEAR	1 15
10	OHIO	339(2)	1938	

GREENE COUNTY
S.H. 195 SEC. "H & F (Pt.)"

The Standard Specifications of the State of Ohio, Department of Highways, including changes and supplemental specifications listed in the proposal shall govern this improvement.

I hereby approve these plans & declare that the making of this improvement will not require the closing to traffic of the highway.

The right of way necessary for this improvement will be provided by the State of Ohio.

Approved H. P. Walsh
Date 7/9/38 Resident District Deputy Director

Approved Walter C. Williams
Date 7/9/38 Resident Division Deputy Director

Approved _____
Date _____ Chief Engineer, Bureau of Maintenance

Approved _____
Date _____ Chief Engineer, Bureau of Bridges & R.R. Crossings

Approved Walter C. Williams
Date 7/6/38 Chief Engineer, Location & Design

Approved Walter C. Williams
Date 7/4/38 First Asst. Director & Chief Engineer

Approved James J. J. J.
Date 9/6/38 Director of Highways

Recommended for Approval _____
Date _____ District Engineer, Bureau of Public Roads

Recommended for Approval _____
Date _____ Chief Engineer, Bureau of Public Roads

Approved _____
Date _____ Chief of Bureau

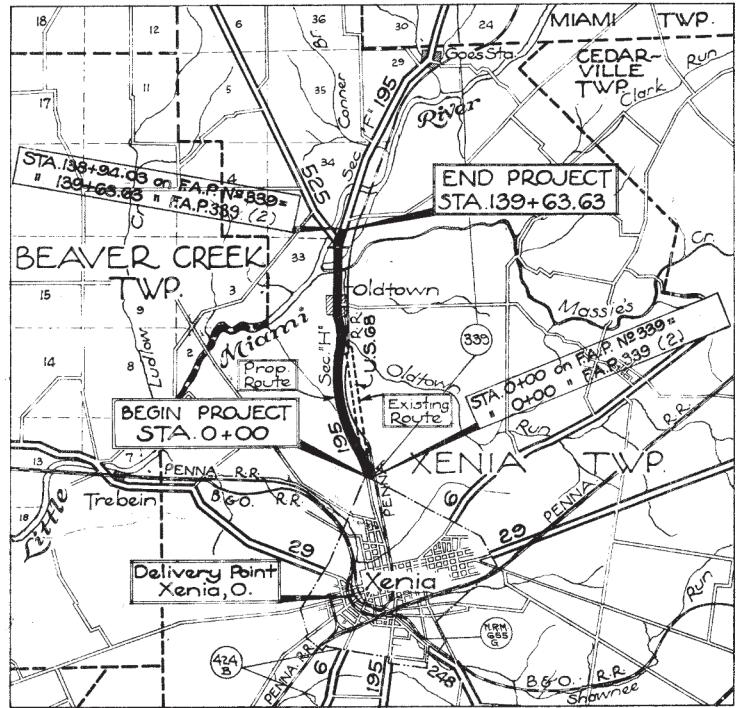
Supplemental Specifications
None

CONVENTIONAL SIGNS ROADSIDE IMPROVEMENT

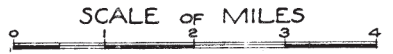
COUNTY LINE	-----
TOWNSHIP LINE	-----
SECTION LINE	-----
CITY OR VILLAGE LINE	-----
PROPERTY LINE	-----
FENCE LINE	-----
STEAM RAILROAD (Location Plan)	-----
EXISTING HEDGE	-----
EXISTING TREES	-----
PROPOSED TREES	-----
SODDING	-----
TOP SOIL FURNISHED & PLACED	-----
Nº 1 SEEDING	-----
Nº 2 SEEDING	-----
MULCHING	-----
TOP SOIL PLACED UNDER PREVIOUS CONTRACT	-----

INDEX OF SHEETS

TITLE SHEET	SHEET	1
TYPICAL SECTION & NOTES	"	2
ALIGNMENT SHEETS	"	3-12
SODDING & SEEDING COMPUTATIONS	"	12
PLANTING DETAILS	"	13-14
SUMMARY OF QUANTITIES	"	15



LOCATION PLAN



PORTION TO BE IMPROVED:
STATE HIGHWAYS:
OTHER ROADS:

SCALES

PLAN: 1" = 100'
1" = 200'

LINE DATA

Beginning of Project	Sta. 0+00	
End of Project	Sta. 139+63.63	
Gross Length of Project	=	13963.63 Lin. Ft.
Addition (Equation: 85+61.09 Back=85+42.85 Ahead)	=	18.24 " "
Deductions		
Bridge Sta. 123+17.93 to Sta. 124+52.31	=	134.38 " "
Bridge Sta. 126+33.85 to Sta. 126+55.35	=	21.50 " "
Net Length of Project	=	13825.99 " "
		2.618 Miles.

SUPPLEMENTAL PRINTS OF STANDARD CONSTRUCTION DRAWINGS	
Std. Drawing No.	Date
L-1	2-16-38
L-2	2-16-38

FILE NO.	GREENE S.H. 195 SECS "H & F (Pt.)"
Date of Letting	1938
Contract No.	216

TYPICAL SECTION

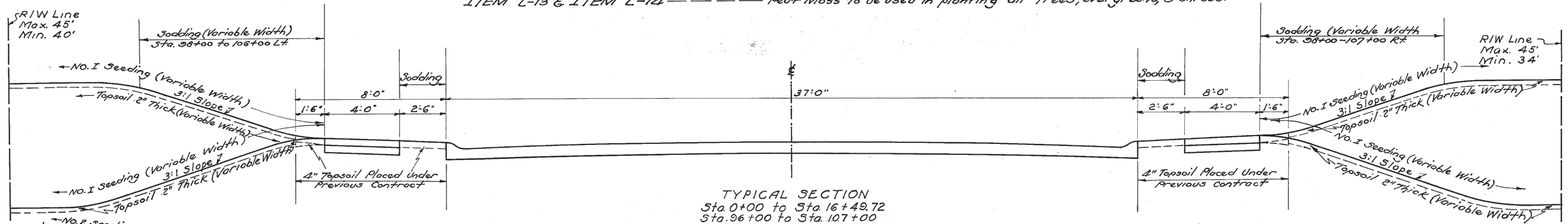
— NOTES —

ITEM L-2 "TOPSOIL FURNISHED & PLACED" ----- Subgrade to be loosened to a depth of 3 inches. Topsoil to be placed upon existing grade line as performed under a previous contract, thereby not necessitating excavation for placing Topsoil. Topsoil to be "feathered out" to meet the existing grade as directed by the Engineer.

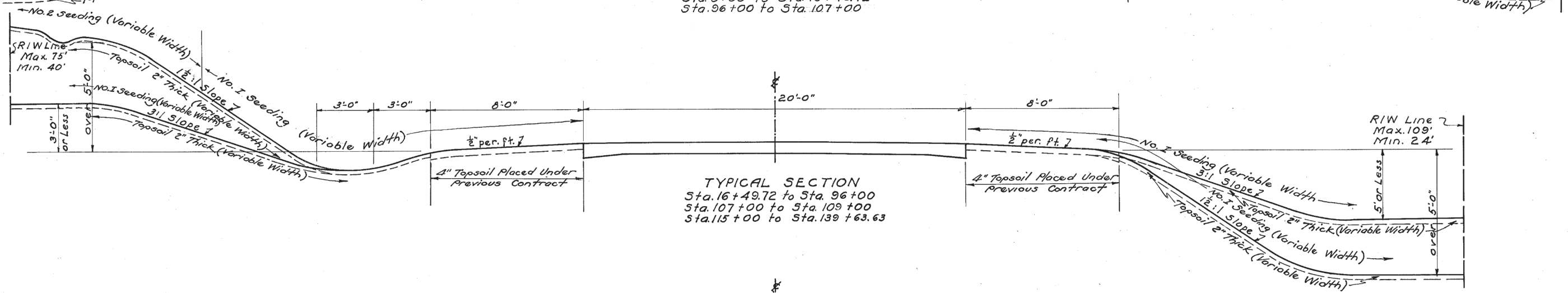
ITEM L-3 "SEEDING" ----- All seeding shall be done at the rate of 4 lbs. per 1000 Sq. Ft. No. 1 Seeding shall be done on areas as outlined on sheet No. 12 with the following mixture: 60% Kentucky Blue Grass, 20% Domestic Rye Grass, 15% Red Top and 5% White Dutch clover. No. 2 Seeding shall be done on areas as outlined on sheet No. 12 with the following mixture: 40% Yellow Sweet Clover, 40% Domestic Rye Grass, 20% Blue Grass. No rolling shall be required on areas designated for No. 2 Seeding.

ITEM L-18 MULCHING ----- Straw shall be used as a mulch on all No. 2 Seeded Areas and for all plant material. 20000 additional lbs. Y.C.I. have been added, to be used as directed by the Engineer.

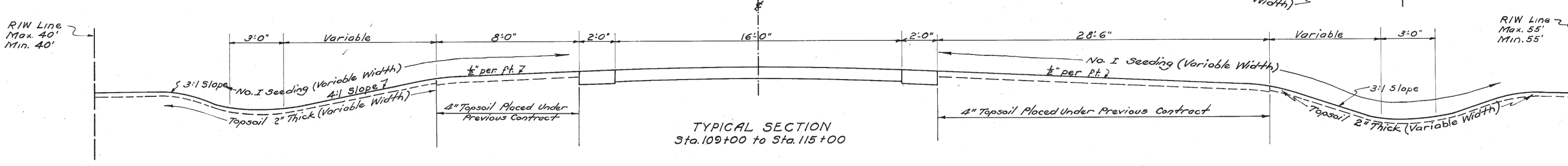
ITEM L-13 & ITEM L-14 ----- Peat Moss to be used in planting all trees, evergreens, & shrubs.



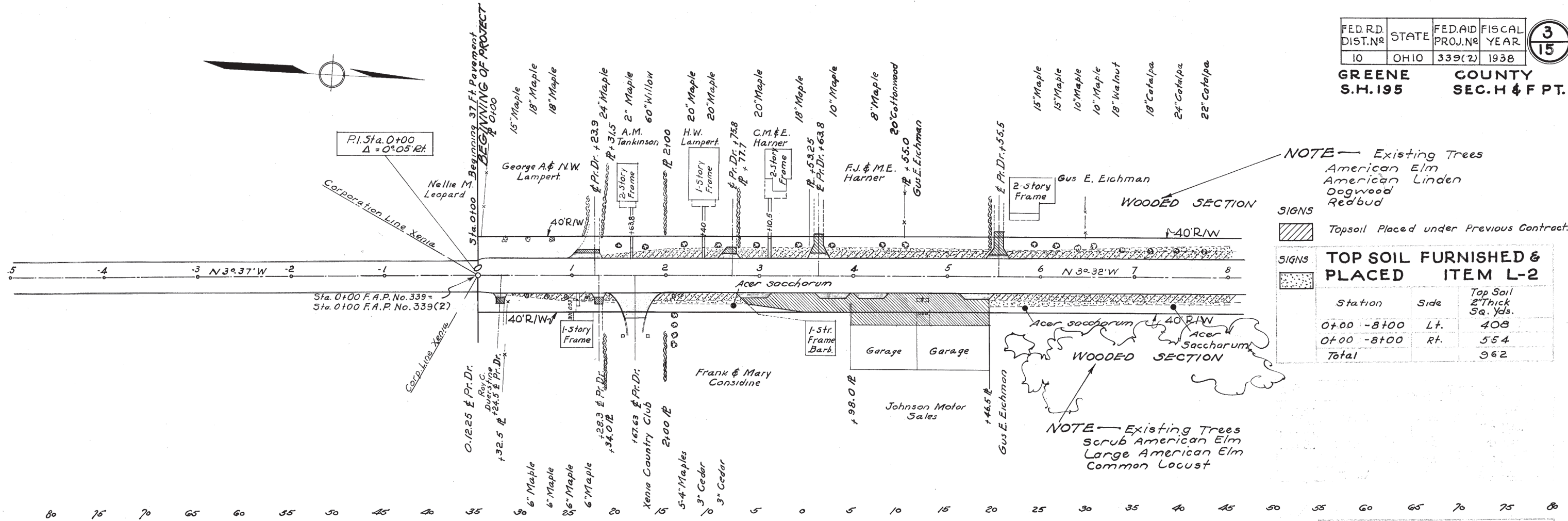
TYPICAL SECTION
Sta. 0+00 to Sta. 16+49.72
Sta. 96+00 to Sta. 107+00



TYPICAL SECTION
Sta. 16+49.72 to Sta. 96+00
Sta. 107+00 to Sta. 109+00
Sta. 115+00 to Sta. 139+63.63



TYPICAL SECTION
Sta. 109+00 to Sta. 115+00



NOTE - Existing Trees
American Elm
American Linden
Dogwood
Redbud

SIGNS Topsoil Placed under Previous Contract.

SIGNS **TOP SOIL FURNISHED & PLACED ITEM L-2**

Station	Side	Top Soil 2" Thick Sq. Yds.
0+00 - 8+00	Lt.	408
0+00 - 8+00	Rt.	554
Total		962

NOTE - Existing Trees
scrub American Elm
Large American Elm
Common Locust

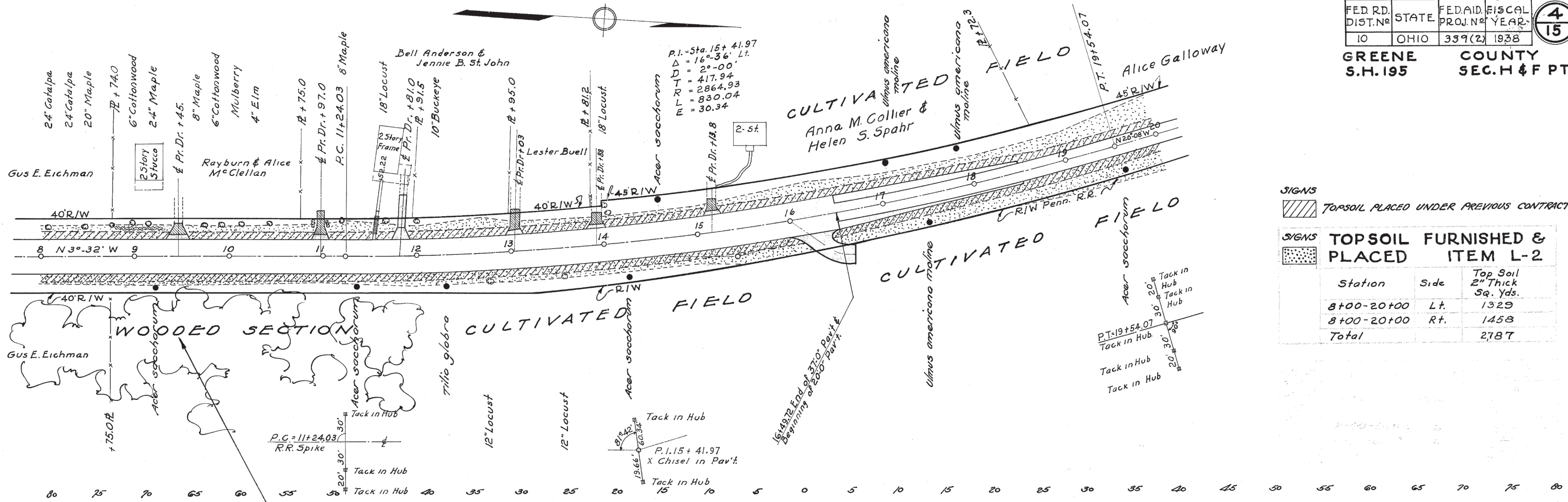
TREE PLANTING ITEM L-14

Station	Side	Acer Saccharum (Sugar Maple) 1/2-1 1/2" Caliper
0+00 - 8+00	Lt.	0
0+00 - 8+00	Rt.	3
Total		3

SIGNS **SEEDING ITEM L-9**

Station	Side	Sq. Yds.
0+00 - 8+00	Lt.	1035
0+00 - 8+00	Rt.	967
Total		2002

NOTE - Seeding & Sodding Computations Shown on Sheet No. 12
Topsoil Computations Shown Sheet No. 11



SIGNS TOPSOIL PLACED UNDER PREVIOUS CONTRACT

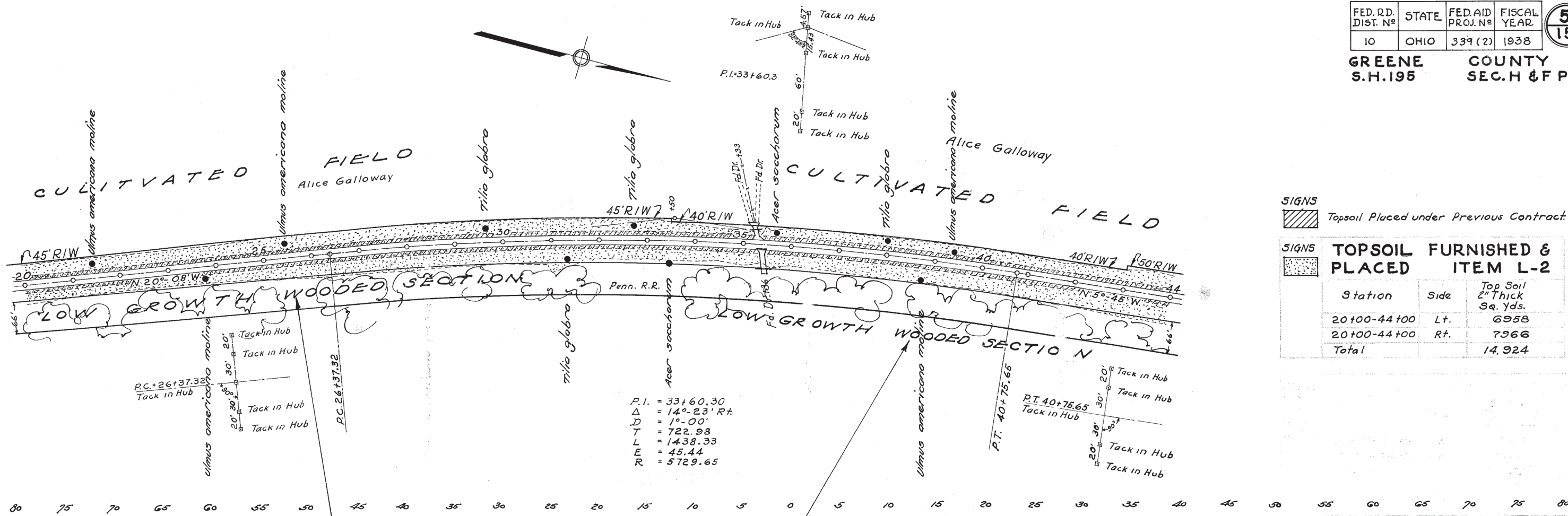
Station	Side	Top Soil 2" Thick Sq. Yds.
8+00-20+00	Lt.	1329
8+00-20+00	Rt.	1458
Total		2787

Station	Side	Sq. Yds.
8+00-20+00	Lt.	2316
8+00-20+00	Rt.	2495
Total		4811

NOTE - Existing Trees
Scrub American Elm
Large American Elm
Common Locust

NOTE - Seeding & Sodding Computations Shown on Sheet No. 12
Topsoil Computations Shown on Sheet No. 11

Station	Side	Ulmus Americana Moline (Moline Elm) 1 1/2 - 1 3/4 Caliper	Acer Saccharum (Sugar Maple) 1 1/2 - 1 3/4 Caliper	Tilia Glabra (American Linden) 1 1/2 - 1 3/4 Caliper
8+00-20+00	Lt.	2	1	0
8+00-20+00	Rt.	1	4	1
Total		3	5	1



SIGNS
 Topsoil Placed under Previous Contract

SIGNS **TOPSOIL FURNISHED & PLACED ITEM L-2**

Station	Side	Top Soil 2" Thick Sq. Yds.
20+00-44+00	Lt.	6958
20+00-44+00	Rt.	7366
Total		14,324

NOTE - Existing Trees
 Scrub American Elm
 Wild Cherry
 Common Locust

NOTE - Existing Trees
 Scrub American Elm
 Wild Cherry
 Common Locust

TREE PLANTING ITEM L-14

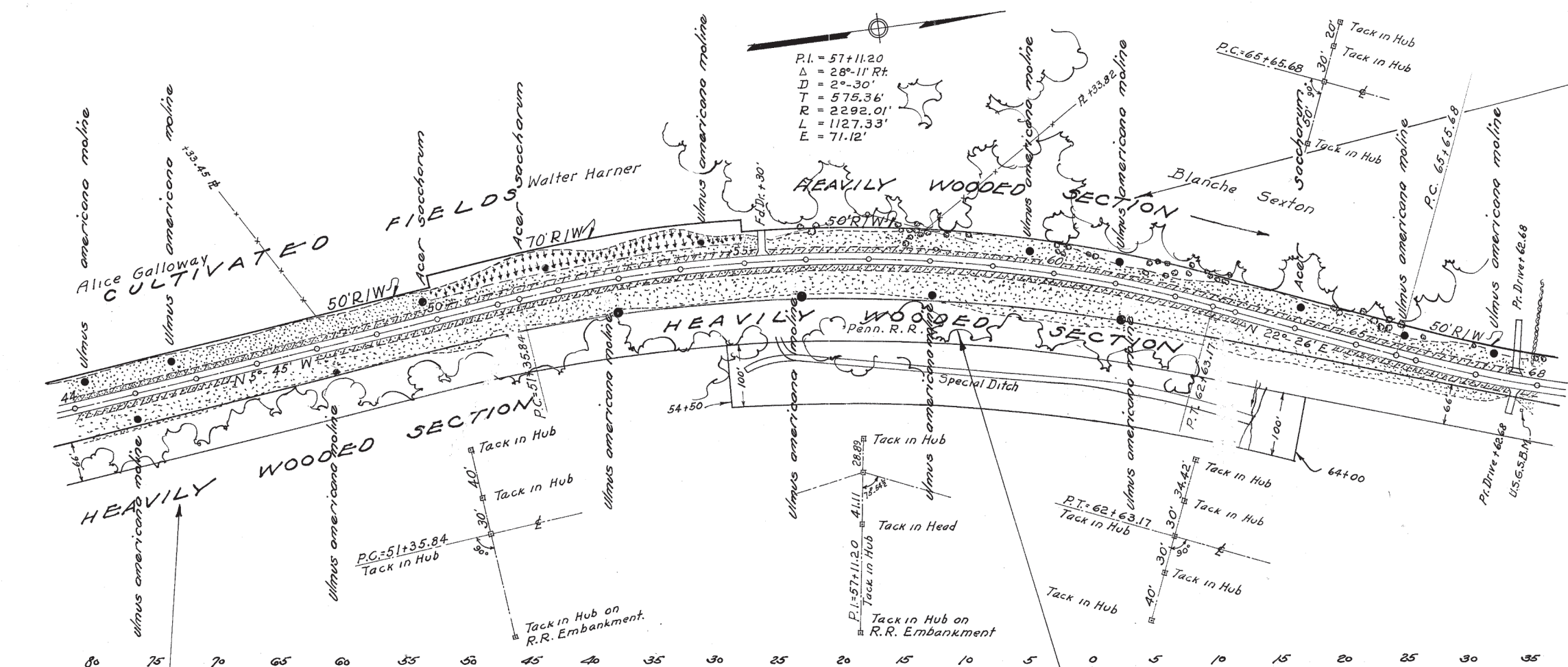
Station	Side	Ulmus Americana Moline (Moline Elm) 1 1/2" - 1 3/4" Caliper	Acer Saccharum (Sugar Maple) 1 1/2" - 1 3/4" Caliper	Tilia Glabra (American Linden) 1 1/2" - 1 3/4" Caliper
20+00-44+00	Lt.	3	1	3
20+00-44+00	Rt.	2	1	1
Total		5	2	4

SIGNS **SEEDING ITEM - L-9**

Station	Side	Sq. Yds.
20+00-44+00	Lt.	9075
20+00-44+00	Rt.	10,086
Total		19,161

NOTE - Seeding & Sodding Computations Shown on Sheet N^o 12
 Topsoil Computations Shown on Sheet No. 11

NOTE - Existing Trees
Red Oak
American Elm
Common Locust



SIGNS
Topsoil placed under previous contract

SIGNS TOPSOIL FURNISHED & PLACED ITEM L-2

Station	Side	Top Soil 2" Thick Sq. Yds.
44+00-68+00	Lt.	9435
44+00-68+00	Rt.	12597
Total		22032

SIGNS MULCHING ITEM L-18

Station	Side	Straw Mulching for No. 2 Seeding Sq. Yds.
50+00-55+00	Lt.	1667
Total		1667

TREE PLANTING ITEM L-14

Station	Side	Ulmus Americana Moline (Moline Elm) 1 1/2" - 1 3/4" Caliper	Acer Saccharum (Sugar Maple) 1 1/2" - 1 3/4" Caliper
44+00 - 68+00	Lt.	7	3
44+00 - 68+00	Rt.	6	
Total		13	3

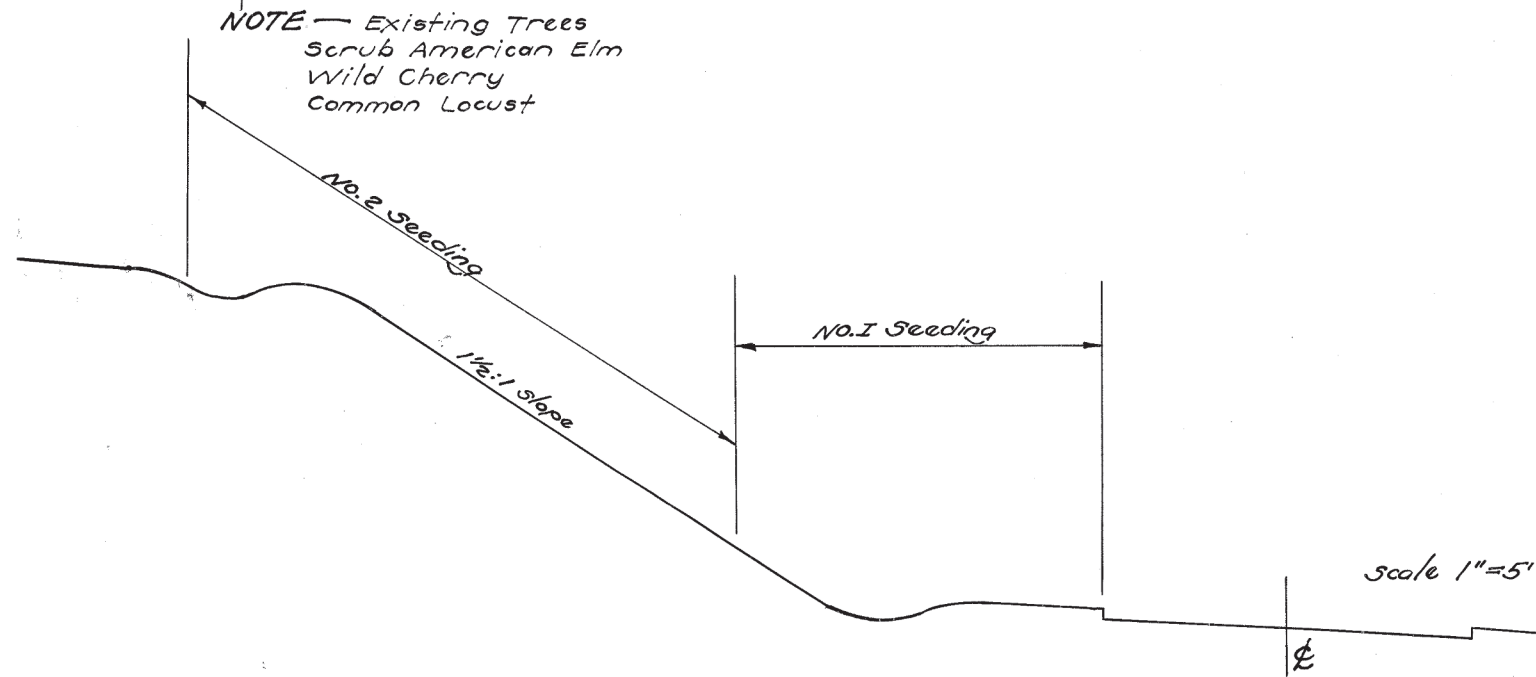
SIGNS SEEDING ITEM L-9

Station	Side	No. 1 Seeding Sq. Yds.	No. 2 Seeding Sq. Yds.
44+00-68+00	Lt.	9875	
44+00-68+00	Rt.	14718	
50+00-55+00	Lt.		1667
Total		24593	1667

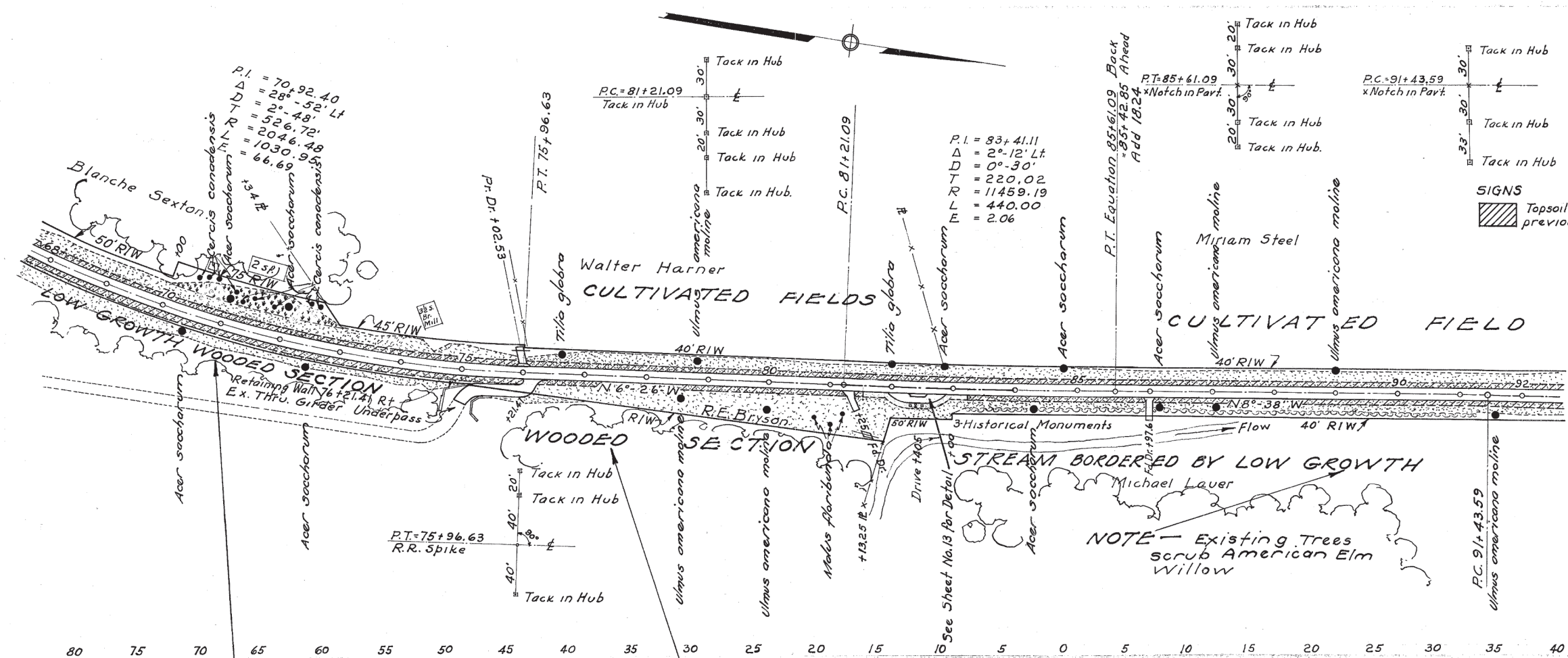
NOTE - Existing Trees
Scrub American Elm
Wild Cherry
Common Locust

NOTE - Existing Trees
Scrub American Elm
Wild Cherry
Common Locust

NOTE - Seeding & Sodding Computations shown on Sheet N^o 12
Topsoil Computations Shown on Sheet No. 11



DETAIL OF SEEDING STA. 50+00 - 55+00 LT.



SIGNS **SODDING ITEM L-10**

Station	Side	Sodding Sq. Yds.
Sodding Carried From Detail on Sheet No. 13	Lt.	0
68+00-92+00	Rt.	171
68+00-92+00	Lt.	0
68+00-92+00	Rt.	0
Total		171

SIGNS **TOPSOIL FURNISHED & PLACED ITEM L-2**

Station	Side	Top Soil 2" Thick Sq. Yds.
68+00-92+00	Lt.	7219
68+00-92+00	Rt.	6196
Total		13,415

SIGNS **MULCHING ITEM L-18**

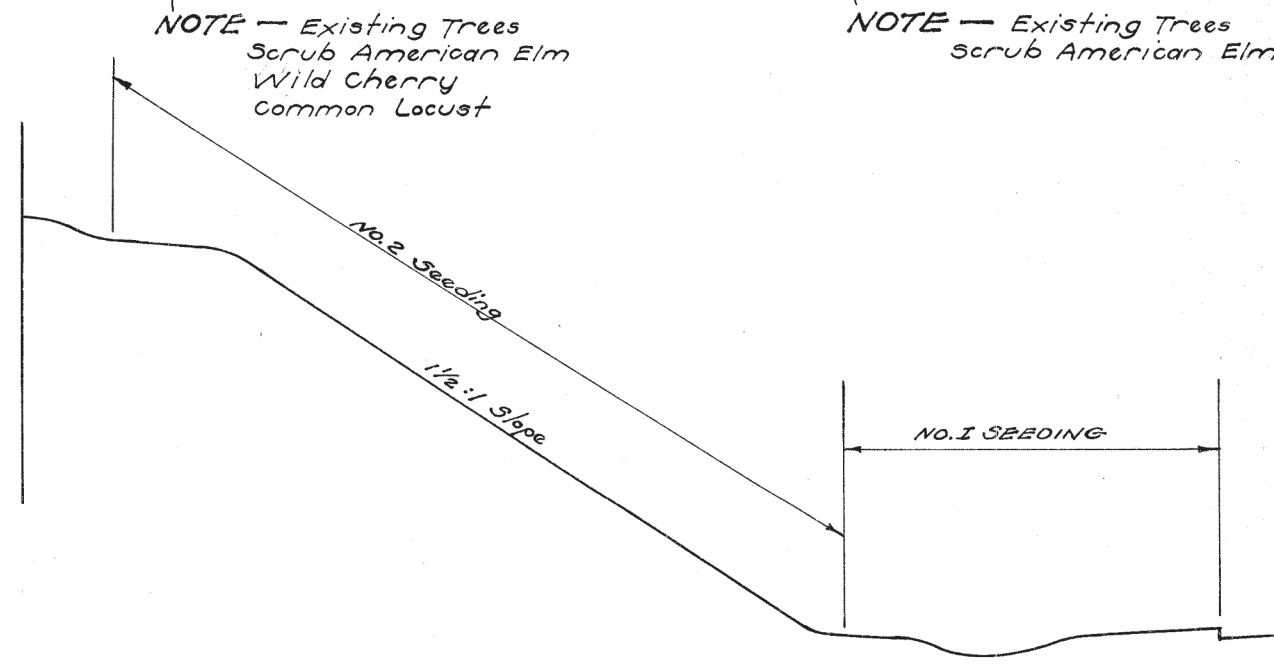
Station	Side	Straw Mulching for No. 2 Seeding Sq. Yds.
70+00-73+00	Lt.	1333
Total		1333

TREE PLANTING ITEM L-14

Station	Side	Liriodendron Tulipifera (Tulip Tree) 1 1/2-1 3/4 Cal. B & B (27")	Ulmus Americana Moline (Moline Elm) 1 1/2-1 3/4 Caliper	Acer Saccharum (Sugar Maple) 1 1/2-1 3/4 Caliper	Tilia Glabra (American Linden) 1 1/2-1 3/4 Caliper	Cercis Canadensis (American Redbud) 4-5' B & B (15")	Malus Floribunda (Japanese Fl. Crab Apple) 5-6' B & B (16")
68+00-92+00	Lt.	0	2	4	2	9	0
68+00-92+00	Rt.	0	4	4	0	0	3
Additions From Detail on Sheet No. 13	Lt.	0	0	0	0	0	0
	Rt.	2	0	0	0	0	3
Total		2	6	8	2	9	6

SHRUB PLANTING ITEM L-13

Station	Side	Ligustrum Iboata Regelianum (Regel Privet) 2-3'	Cydonia Japonica (Japanese Fl. Quince) 3-4'	Spiraea Tomentosa (Hardhack) 2-3'	Berberis Thunbergii (Japanese Barberry) 2-3'	Viburnum Lantana (Wayfaring Tree) 4-5'
Additions From Detail on Sheet No. 13	Lt.	0	0	0	0	0
	Rt.	30	8	3	4	2
Total		30	8	3	4	2



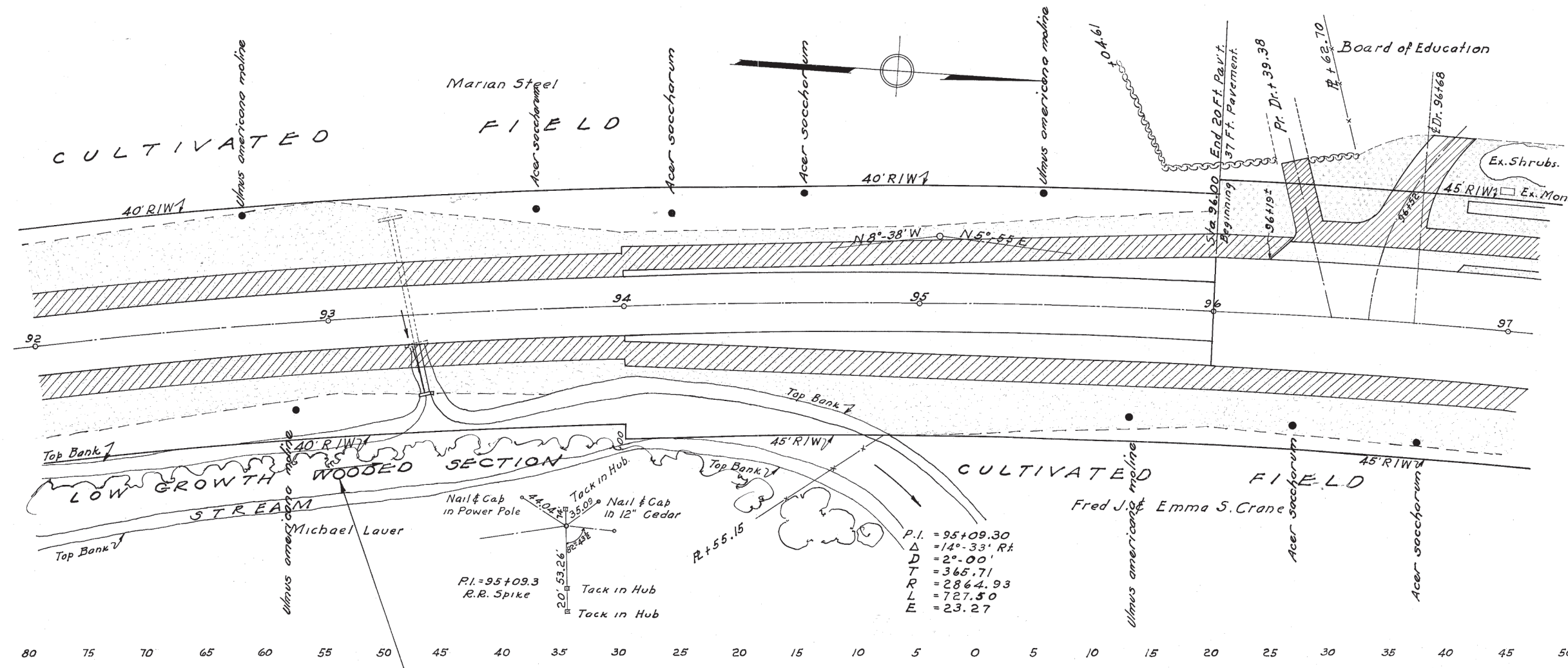
NOTE - Seeding & Sodding Computations shown on Sheet No. 12
Topsoil Computations Shown on Sheet No. 11

SIGNS **SEEDING ITEM L-9**

Station	Side	No. 1 Seeding Sq. Yds.	No. 2 Seeding Sq. Yds.
68+00-92+00	Lt.	8003	
68+00-92+00	Rt.	8042	
70+00-73+00	Lt.		1333
Total		16045	1333

Note - Seeding Quantities on Detail Sheet No. 13 from Sta. 61455 to 63127 Lt. Included in Quantities for the Left Side in the above Box.

DETAIL OF SEEDING STA. 70+00-73+00 Lt.



NOTE - Existing Trees
scrub American Elm
Willow

SIGNS

TOPSOIL PLACED UNDER PREVIOUS CONTRACT

SIGNS

TOPSOIL FURNISHED & PLACED ITEM L-2

Station	Side	Top Soil 2" Thick Sq. Yds.
92+00-97+00	Lt.	1257
92+00-97+00	Rt.	1012
Total		2269

TREE PLANTING ITEM L-14

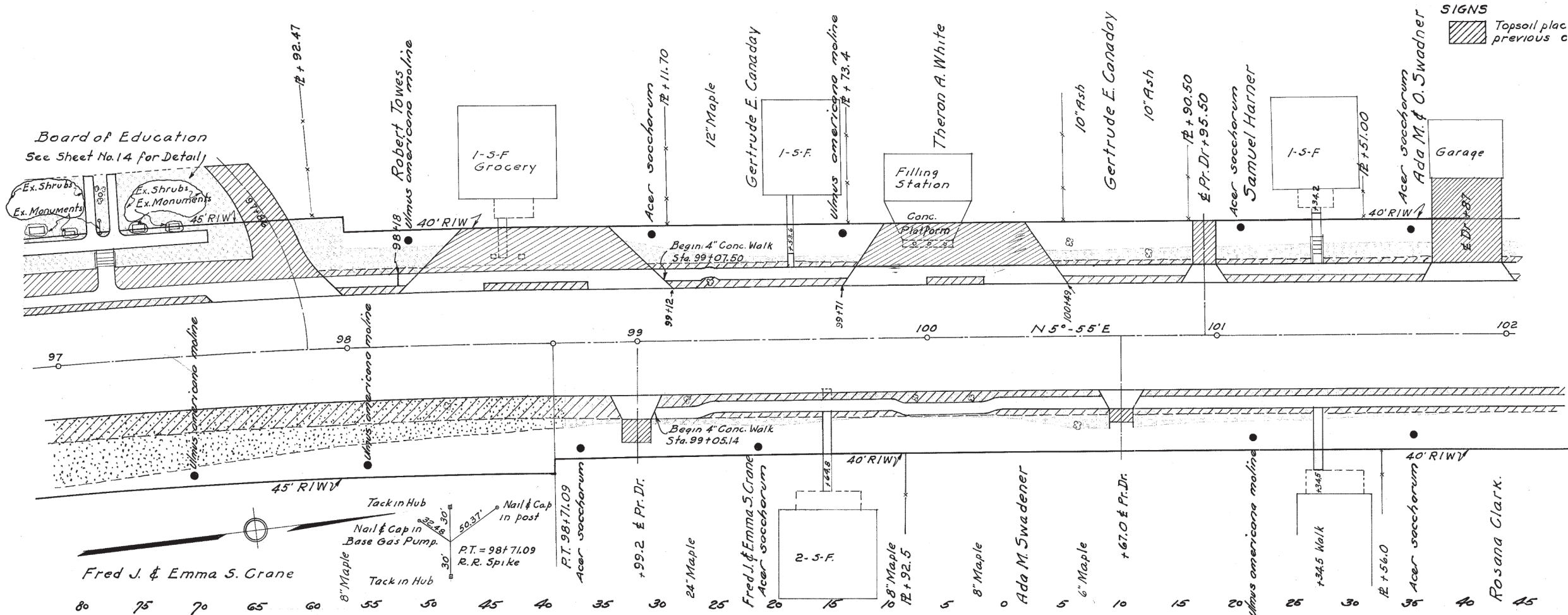
Station	Side	Ulmus Americana Moline (Moline Elm) 1 1/2" - 1 3/4" Caliper	Acer Saccharum (Sugar Maple) 1 1/2" - 1 3/4" Caliper
92+00-97+00	Lt.	2	3
92+00-97+00	Rt.	2	2
Total		4	5

SIGNS

SEEDING ITEM L-9

Station	Side	Sq. Yds.
92+00-97+00	Lt.	1223
92+00-97+00	Rt.	1456
Total		2679

NOTE - Seeding & Sodding Computations shown on sheet No 12
Topsoil Computations shown on sheet No 11



SIGNS SODDING - ITEM L-10

Station	Side	Sodding Sq. Yds.
Sodding Carried from Detail on Sheet No. 14	Lt.	430
97+00-102+00	Lt.	230
97+00-102+00	Rt.	222
Total		882

SIGNS TOPSOIL FURNISHED & PLACED ITEM L-2

Station	Side	Top Soil 2" Thick Sq. Yds.
97+00-102+00	Lt.	125
97+00-102+00	Rt.	294
Total		419

TREE PLANTING ITEM L-14

Station	Side	Juniperus Virg. Pfitzeriana (Pfitzer Juniper) 3-4' B & B (15")	Juniperus Communis Depressa (Prostrate Juniper) 3-4' B & B (15")	Malis Floribunda (Japanese Fl. Crab Apple) 5-6' B & B (16")	Ulmus Americana Moline (Moline Elm) 1 1/2 - 1 3/4" Caliper	Acer Saccharum (Sugar Maple) 1 1/2 - 1 3/4" Caliper
Additions from Detail On Sheet No. 14	Lt.	5	5	2	0	2
97+00-102+00	Lt.				2	3
97+00-102+00	Rt.				3	3
Total		5	5	2	5	8

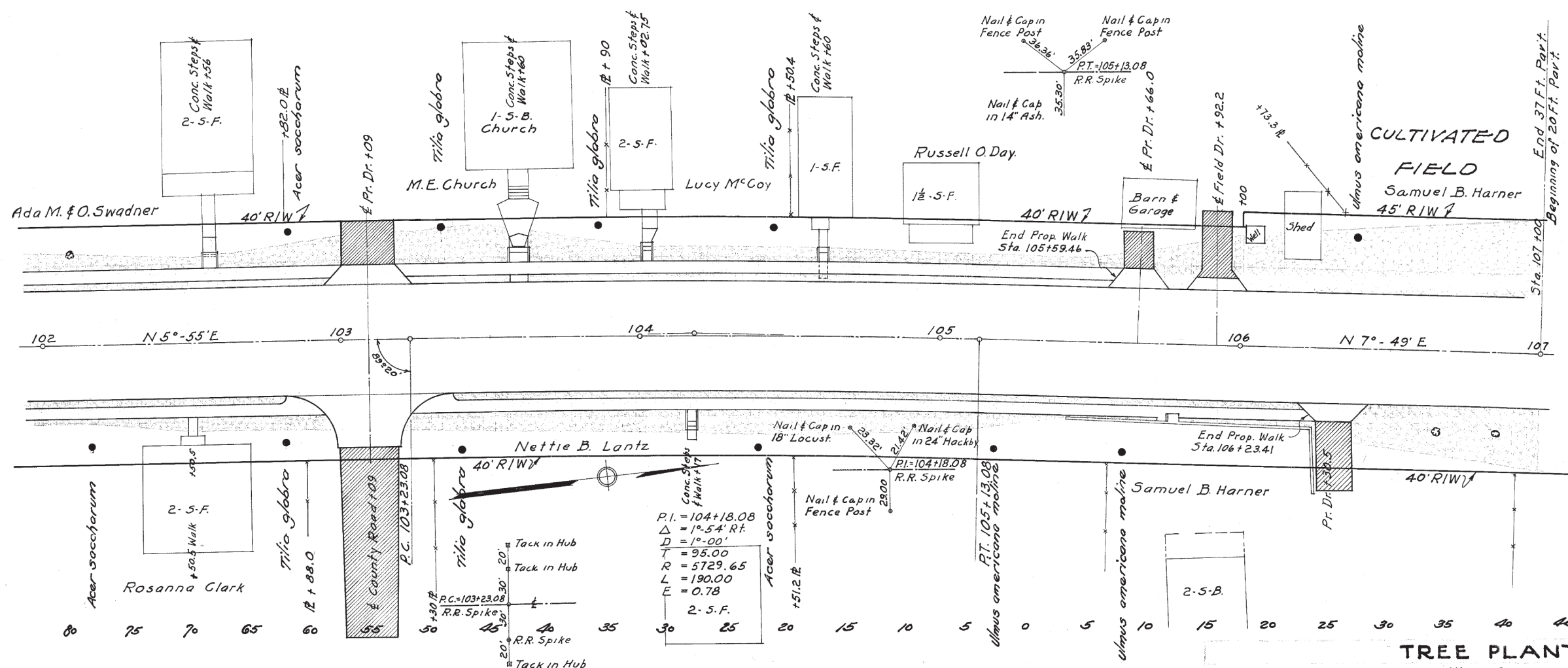
NOTE - Seeding & Sodding Computations shown on Sheet No. 12
Topsoil Computations shown on Sheet No. 11

SHRUB PLANTING ITEM L-13


Station	Side	Viburnum Lantana (Wayfaring Tree) 4-5'
Shrub Planting Carried from detail on Sht. 14	Lt.	6
	Rt.	0
Total		6

SIGNS SEEDING ITEM - L-9

Station	Side	Sq. Yds.
97+00-102+00	Lt.	0
97+00-102+00	Rt.	350
Total		350



SIGNS

	Topsoil placed under previous contract
---	--

SIGNS

TOPSOIL FURNISHED & PLACED ITEM L-2			
Station	Side	Top Soil 2" Thick	Sq. Yds.
102+00-107+00	Lt.		4.39
102+00-107+00	Rt.		2.40
Total			6.79

TREE PLANTING ITEM L-14

Station	Side	Ulmus Americana Moline (Moline Elm) 1 1/2 - 1 3/4" Caliper	Acer Saccharum (Sugar Maple) 1 1/2 - 1 3/4" Caliper	Tilia Glabra (American Linden) 1 1/2 - 1 3/4" Caliper
102+00-107+00	Lt.	1	1	3
102+00-107+00	Rt.	2	2	2
Total		3	3	5

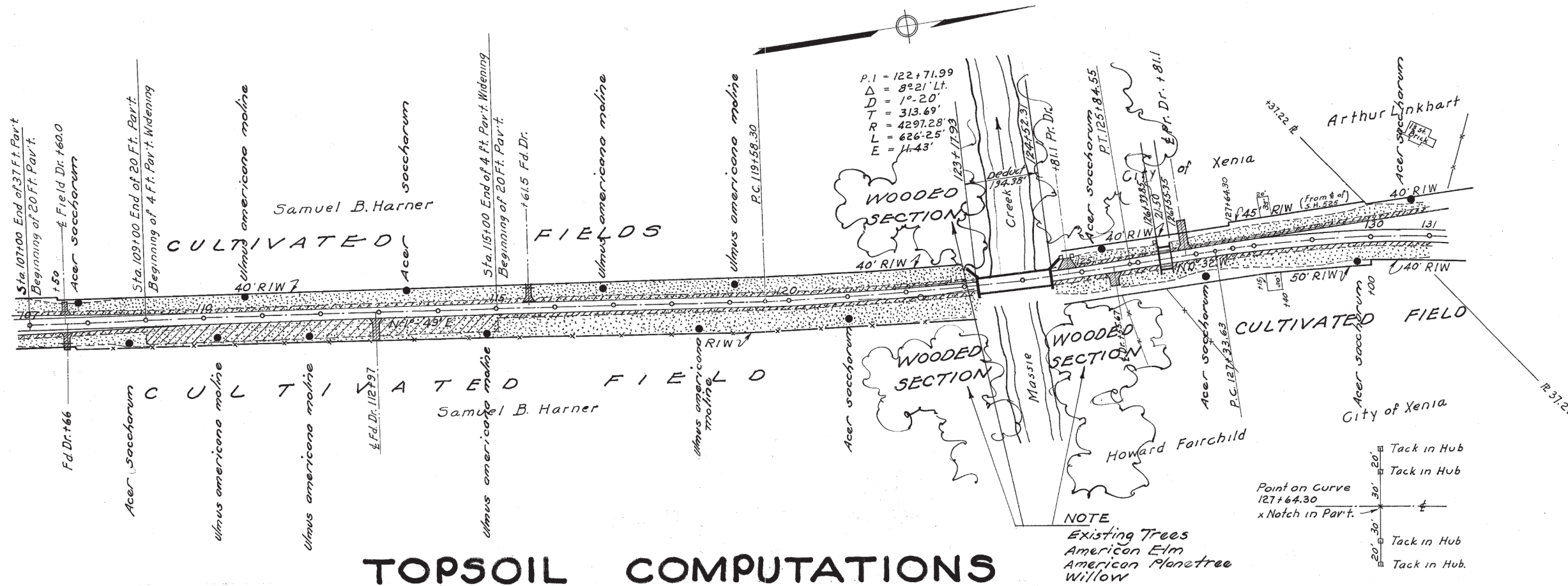
SIGNS

SODDING ITEM L-10			
Station	Side	Sq. Yds.	
102+00-107+00	Lt.	375	
102+00-107+00	Rt.	455	
Total		830	

SIGNS

SEEDING ITEM L-9			
Station	Side	Sq. Yds.	
102+00-107+00	Lt.	300	
102+00-107+00	Rt.	0	
Total		300	

NOTE - Seeding & Sodding Computations shown on Sheet N^o 12
Topsoil Computations Shown on Sheet No. 11



SIGNS

Topsoil placed under previous contract

SIGNS

TOP SOIL FURNISHED & PLACED ITEM L-2

Station	Side	Top Soil 2" Thick Sq. Yds.
107+00-131+00	Lt.	5407
107+00-131+00	Rt.	6191
Total		11,598

TOPSOIL COMPUTATIONS

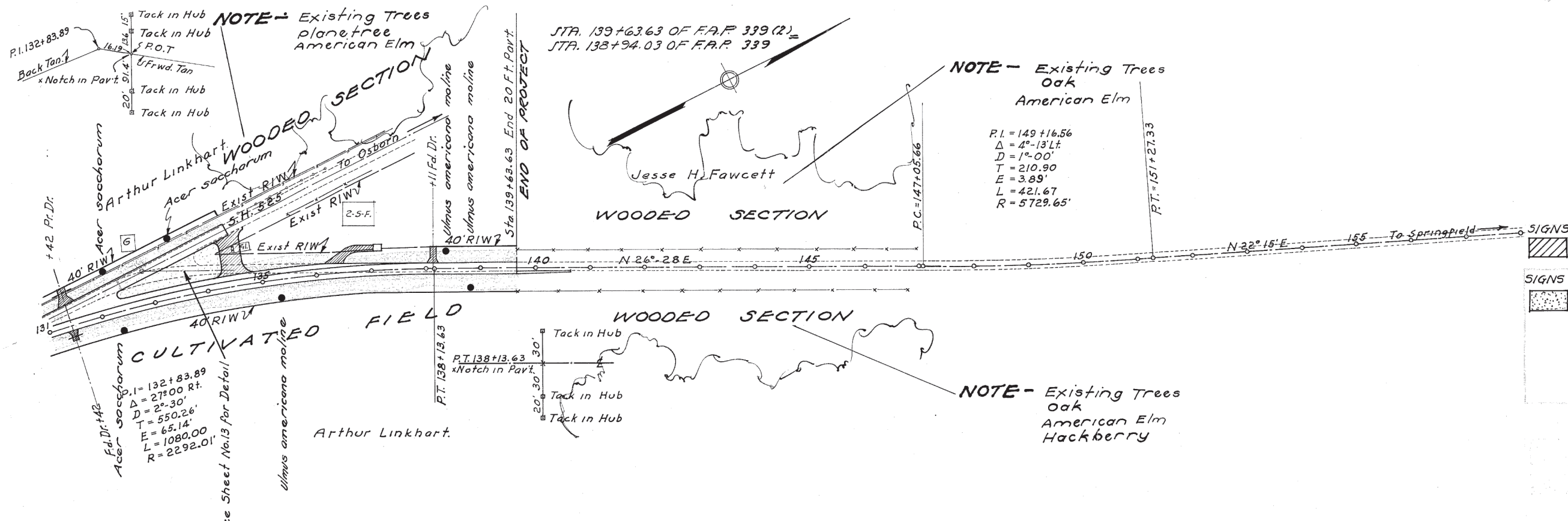
TOPSOIL FURNISHED & PLACED ITEM L-2																	
Station	Station	Side	Lin. Ft.	Av. Width	Sq. Yds.	Station	Station	Side	Lin. Ft.	Av. Width	Sq. Yds.	Station	Station	Side	Lin. Ft.	Av. Width	Sq. Yds.
0+00	8+00	Lt.	800	5	444	Total	70+00	Rt.	150	22	367	70+00	71+50	Rt.	350	17	661
Ded. for drs. & Wks.		Lt.			36	106+00	107+00	Lt.	100	19	211	71+50	75+00	Rt.	655	42	3057
Total		Lt.			408	107+00	123+17	Lt.	1617	22	3952	75+00	81+55	Rt.			369
8+00	18+00	Lt.	1000	7	778	Ded. for dr.		Lt.			129	Ded. for dr.		Rt.			2688
Ded. for drs.		Lt.			49	Total		Lt.			3823	Total		Rt.			618
Total		Lt.			729	124+52	131+00	Lt.	648	22	1584	81+55	83+27	Rt.	(Detail)		1164
18+00	20+00	Lt.	200	27	600	132+30	134+32	Lt.	Detail on sheet 13		880	83+27	92+00	Rt.	873	12	13
20+00	33+50	Lt.	1350	28	4200	131+00	134+50	Lt.	350	12	467	Ded. for drs.		Rt.			1151
33+50	43+00	Lt.	950	23	2428	Ded. for dr. on S.H. #525		Lt.			18	Total		Rt.			378
Ded. for dr.		Lt.			48	Total		Lt.			449	92+00	94+00	Rt.	200	17	345
Total		Lt.			2380	134+50	139+63.63	Lt.	513.63	17	970	94+00	96+00	Rt.	200	20	445
43+00	44+00	Lt.	100	34	378	Ded. for drs.		Lt.			96	96+00	97+00	Rt.	100	17	189
44+00	50+00	Lt.	600	34	2267	Total		Lt.			874	97+00	98+75	Rt.	175	10	194
50+00	55+00	Lt.	500	42	2333			Lt.				98+75	102+00	Rt.	325	3	108
55+00	68+00	Lt.	1300	34	4911	0+00	8+00	Rt.	800	10	888	Ded. for drs. & Wks.		Rt.			8
Ded. for drs.		Lt.			76	Ded. for drs.		Rt.			334	Total		Rt.			100
Total		Lt.			4835	Total		Rt.			554	102+00	105+43	Rt.	343	6	228
68+00	70+00	Lt.	200	32	711	8+00	16+00	Rt.	800	10	888	Ded. for dr.		Rt.			18
70+00	73+00	Lt.	300	52	1733	16+00	20+00	Rt.	400	14	622	Total		Rt.			210
73+00	75+96	Lt.	296	27	888	Ded. for dr.		Rt.			52	106+26	107+00	Rt.	74	4	33
Ded. for dr.		Lt.			34	Total		Rt.			570	Ded. for dr.		Rt.			3
Total		Lt.			854	20+00	44+00	Rt.	2400	30	8000	Total		Rt.			30
75+96	92+00	Lt.	1604	22	3921	Ded. for dr.		Rt.			34	107+00	109+00	Rt.	200	17	378
92+00	94+00	Lt.	200	22	489	Total		Rt.			7966	Ded. for dr.		Rt.			19
94+00	96+00	Lt.	200	17	378	44+00	49+50	Rt.	550	34	2078	Total		Rt.			359
96+00	98+00	Lt.	(Detail)		390	49+50	52+00	Rt.	250	38	1055	109+00	115+00	Rt.	600	12	800
98+00	102+00	Lt.	400	5	222	52+00	63+50	Rt.	1150	58	7411	115+00	123+17	Rt.	817	32	2904
Ded. for drs. & Wks.		Lt.			97	63+50	68+00	Rt.	450	42	2100	Ded. for dr.		Rt.			13
Total		Lt.			125	Ded. for dr.		Rt.			47	Total		Rt.			2891
102+00	106+00	Lt.	400	6	267	Total		Rt.			2053	124+52	130+00	Rt.	548	32	1948
Ded. for drs. & Wks.		Lt.			39	68+00	70+00	Rt.	200	32	711	Ded. for dr.		Rt.			51

TREE PLANTING ITEM L-14			
Station	Side	Ulmus Americana Moline (Moline Elm) 1 1/2" - 1 3/4" Caliper	Acer Saccharum (Sugar Maple) 1 1/2" - 1 3/4" Caliper
107+00-131+00	Lt.	3	4
107+00-131+00	Rt.	4	4
Total		7	8

SEEDING ITEM L-9			
Station	Side	Sq. Yds.	
107+00-131+00	Lt.	7353	
107+00-131+00	Rt.	9469	
Total		16,822	

NOTE - Seeding & Sodding Computations Shown on Sheet No. 12
Top Soil Computations Shown on Sheet No. 11

Station	Station	Side	Lin. Ft.	Av. Width	Sq. Yds.
Total		Rt.			1897
130+00	131+00	Rt.	100	22	244
131+00	135+00	Rt.	400	17	755
Ded. for dr.		Rt.			19
Total		Rt.			736
135+00	139+63.63	Rt.	463.63	22	1133



SIGNS TOPSOIL FURNISHED & PLACED ITEM L-2

Topsoil placed under previous contract

Station	Side	Top Soil 2" Thick Sq. Yds.
131+00 - 139+63.63	Lt.	2203
131+00 - 139+63.63	Rt.	1869
Total		4072

SEEDING & SODDING COMPUTATIONS

NO.1 SEEDING ITEM L-9						NO.1 SEEDING ITEM -9						NO.1 SEEDING ITEM L-9					
Station	Station	Side	Lin. Ft.	Avg. Width	Sq. Yds.	Station	Station	Side	Lin. Ft.	Avg. Width	Sq. Yds.	Station	Station	Side	Lin. Ft.	Avg. Width	Sq. Yds.
0+00	8+00	Lt.	800	13	1155	Total						75+00	81+55	Rt.	655	50	3639
Ded. for drs. & Wks.		Lt.			120	124+52	131+00	Lt.	648	30	2160	Ded. for dr.		Rt.			399
Total		Lt.			1035	Ded. for drs.		Lt.			120	Total		Rt.			3240
8+00	18+00	Lt.	1000	15	1667	(Detail) 132+30	134+32	Lt.	880	83+27	83+27	83+27	83+27	Rt.	873	20	1940
Ded. for drs.		Lt.			129	(S.H. #525) 131+00	134+50	Lt.	350	20	778	Ded. for dr.		Rt.			27
Total		Lt.			1538	Ded. for drs. on S.H. #525		Lt.			40	Total		Rt.			1913
18+00	20+00	Lt.	200	35	778	Total		Lt.			738	92+00	94+00	Rt.	200	2.5	556
Ded. for drs.		Lt.			64	134+50	139+63.63	Lt.	513.63	25	1427	94+00	96+00	Rt.	200	2.8	622
Total		Lt.			3208	Ded. for drs.		Lt.			159	96+00	97+00	Rt.	100	2.5	278
43+00	44+00	Lt.	100	42	467	0+00	8+00	Rt.	800	18	1600	97+00	98+75	Rt.	175	18	350
Ded. for drs. & Wks.		Lt.			2800	Ded. for drs. & Wks.		Rt.			633	107+00	109+00	Rt.	200	2.5	556
Total		Lt.			1111	Total		Rt.			967	Total		Rt.			524
55+00	68+00	Lt.	1300	42	6067	8+00	16+00	Rt.	800	18	1600	109+00	123+17	Rt.	1417	40	6298
Ded. for dr.		Lt.			103	16+00	20+00	Rt.	400	22	978	Ded. for dr.		Rt.			45
Total		Lt.			5964	Ded. for drs.		Rt.			83	Total		Rt.			6249
68+00	70+00	Lt.	200	40	889	20+00	44+00	Rt.	2400	38	10133	124+52	130+00	Rt.	548	40	2436
Ded. for drs. & Wks.		Lt.			667	Ded. for drs.		Rt.			47	Ded. for dr.		Rt.			74
Total		Lt.			1151	Total		Rt.			10086	Total		Rt.			2362
73+00	75+96	Lt.	296	35	1151	44+00	49+50	Rt.	550	42	2567	130+00	131+00	Rt.	100	30	334
Ded. for dr.		Lt.			51	49+50	52+00	Rt.	250	46	1278	131+00	135+00	Rt.	400	2.5	1111
Total		Lt.			1100	Ded. for drs.		Rt.			60	Ded. for dr.		Rt.			33
75+96	92+00	Lt.	1604	30	5347	68+00	70+00	Rt.	200	40	889	Total		Rt.			1078
Ded. for drs. & Wks.		Lt.			667	70+00	71+50	Rt.	150	30	500	135+00	139+63.63	Rt.	463.63	30	1545
Total		Lt.			556	Ded. for drs.		Rt.			60	Total		Rt.			1078
92+00	94+00	Lt.	200	30	667	71+50	75+00	Rt.	350	2.5	972	NO.2 SEEDING ITEM L-9					
Ded. for drs. & Wks.		Lt.			667	Ded. for drs.		Rt.			60	Station	Station	Side	Lin. Ft.	Avg. Width	Sq. Yds.
Total		Lt.			1100	Total		Rt.			2440	50+00	55+00	Lt.	500	30	1667
94+00	96+00	Lt.	200	2.5	556	68+00	70+00	Rt.	200	40	889	70+00	73+00	Lt.	300	40	1333
Ded. for drs. & Wks.		Lt.			667	70+00	71+50	Rt.	150	30	500	Ded. for dr.		Rt.			81+55
Total		Lt.			556	Ded. for drs.		Rt.			60	Total		Rt.			83+27
96+00	97+00	Lt.			667	71+50	75+00	Rt.	350	2.5	972	102+00	105+43	Rt.	343	10	381
Ded. for drs. & Wks.		Lt.			667	Ded. for drs.		Rt.			60	Ded. for drs. & Wks.		Rt.			42
Total		Lt.			1100	Total		Rt.			2440	Total		Rt.			339
97+00	98+00	Lt.			667	68+00	70+00	Rt.	200	40	889	102+00	106+26	Rt.	83	4	37
Ded. for drs. & Wks.		Lt.			667	70+00	71+50	Rt.	150	30	500	Ded. for drs.		Rt.			39
Total		Lt.			1100	Ded. for drs.		Rt.			60	Total		Rt.			79
99+00	106+00	Lt.	100	27	300	71+50	75+00	Rt.	350	2.5	972	106+26	107+00	Rt.	74	12	99
Ded. for drs. & Wks.		Lt.			300	Ded. for drs.		Rt.			60	Ded. for drs. & Wks.		Rt.			20
Total		Lt.			77	Total		Rt.			2440	Total		Rt.			79

TREE PLANTING ITEM L-14					SODDING ITEM L-10					SHRUB PLANTING ITEM L-13					
Station	Side	Species	Caliper	Sq. Yds.	Station	Station	Side	Lin. Ft.	Avg. Width	Sq. Yds.	Station	Side	Species	Height	
131+00 - 139+63.63	Lt.	Ulmus Americana Moline (Moline Elm)	1 1/2 - 1 3/4"	1	96+00	98+00	Lt.			430	96+00	98+00	Lt.	Spiraea Tomentosa (Hardhack)	2-3'
131+00 - 139+63.63	Rt.	Acer Saccharum (Sugar Maple)	1 1/2 - 1 3/4"	2	98+00	102+00	Lt.	400	9	400	98+00	102+00	Lt.		55
On Sheet No. 13	Rt.			0	Ded. for drs. & Wks.		Lt.			170			Rt.		0
Total				3	Total		Rt.			524	131+00 - 139+63.63	Lt.			0
					102+00	106+00	Lt.	400	10	445	131+00 - 139+63.63	Rt.			0
					Ded. for drs. & Wks.		Lt.			70	Total				55
					Total		Rt.			6249	Total				
					98+75	102+00	Rt.	325	7	253	Total				
					Ded. for drs.		Rt.			31	SEEDING ITEM L-9				
					Total		Rt.			222	Station	Side	Sq. Yds.		
					102+00	105+43	Rt.	343	10	381	131+00 - 139+63.63	Lt.			2886
					Ded. for drs. & Wks.		Rt.			42	131+00 - 139+63.63	Rt.			2623
					Total		Rt.			339	Total				5500
					105+43	106+26	Rt.	83	4	37	Note:				
					Ded. for drs.		Rt.			39	Seeding Quantities on Detail Sheet No. 13				
					Total		Rt.			20	From Station 132+30 to 134+50 Lt.				
					106+26	107+00	Rt.	74	12	99	Included in the Left Side in the above Box.				
					Ded. for drs.		Rt.			79					
					Total		Rt.			171					

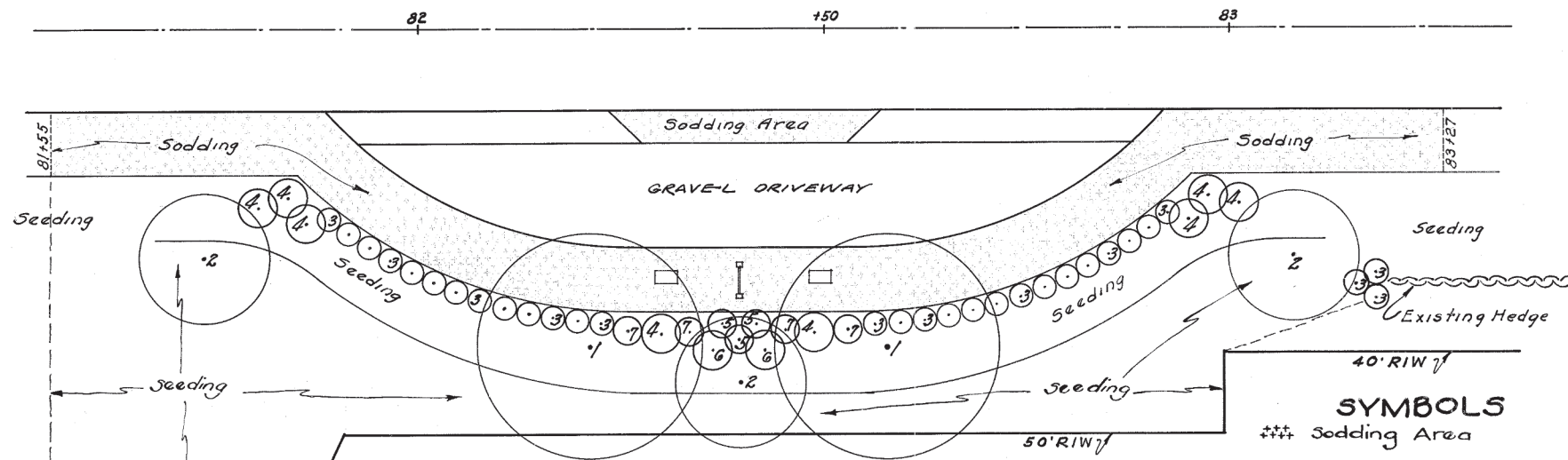
STA. 131+00 → STA. 158+00

PLANTING & SODDING DETAIL

STA. 81+55 TO 83+27 RT.

FED. RD. DIST. NO.	STATE	FED. AID PROJECT	FISCAL YEAR	13 15
10	OHIO	339 (2)	1938	

GREENE COUNTY
S.H.195 SEC.H&F.PT.



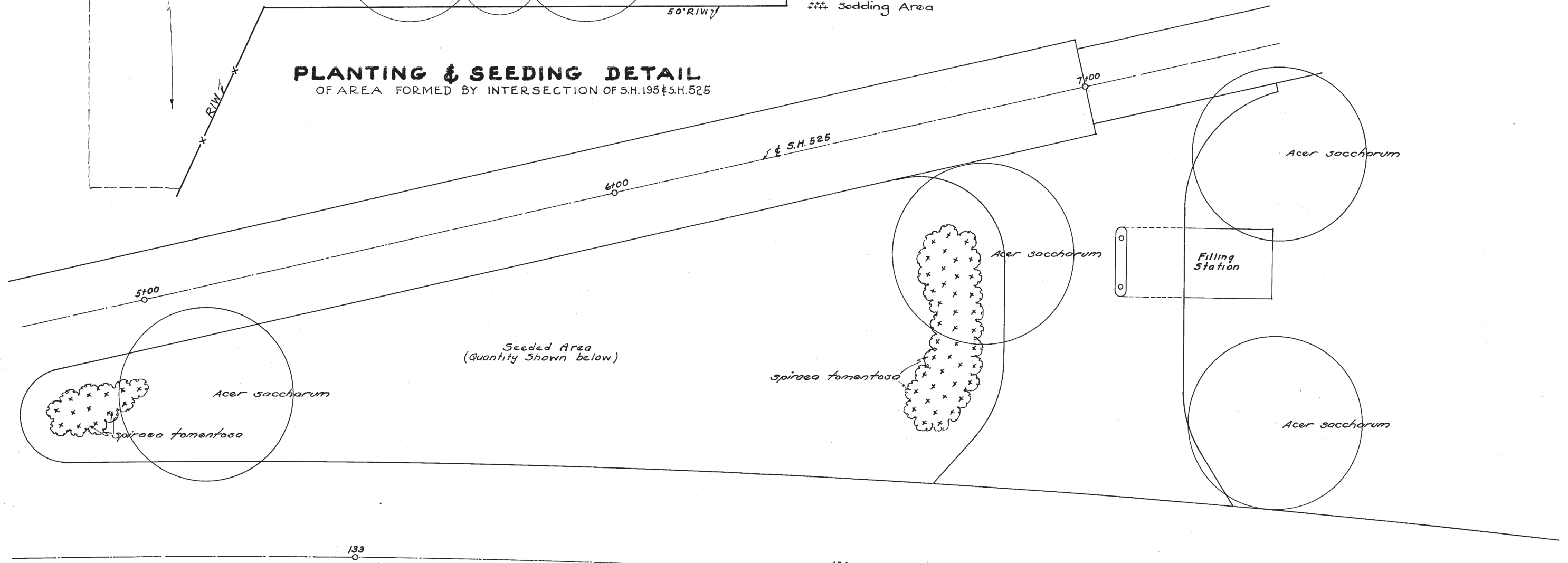
SODDING & PLANTING QUANTITIES

ITEM	KEY NO.	QUANT.	DESCRIPTION	SIZE
L-14	1	2	Liriodendron Tulipifera (Tulip Tree) B & B (27")	1 1/2" - 1 3/4" Caliper
L-14	2	3	Malus Floribunda (Japanese Flowering Crab Apple)	5-6'
L-13	3	30	Ligustrum Iboia Regelianum (Regel Privet)	2-3'
L-13	4	8	Cydonia Japonica (Japanese Flowering Quince)	3-4'
L-13	5	3	Spiraea Tomentosa (Hardhack)	2-3'
L-13	6	2	Viburnum Lantana (Wayfaring Tree)	4-5'
L-13	7	4	Berberis Thunbergi (Japanese Barberry)	2-3'
L-10		171	Sq. Yds. Sodding	
L-9		528	Sq. Yds. Seeding, No. 1	

Quantities above carried to Sheet No 7

PLANTING & SEEDING DETAIL

OF AREA FORMED BY INTERSECTION OF S.H.195 & S.H.525



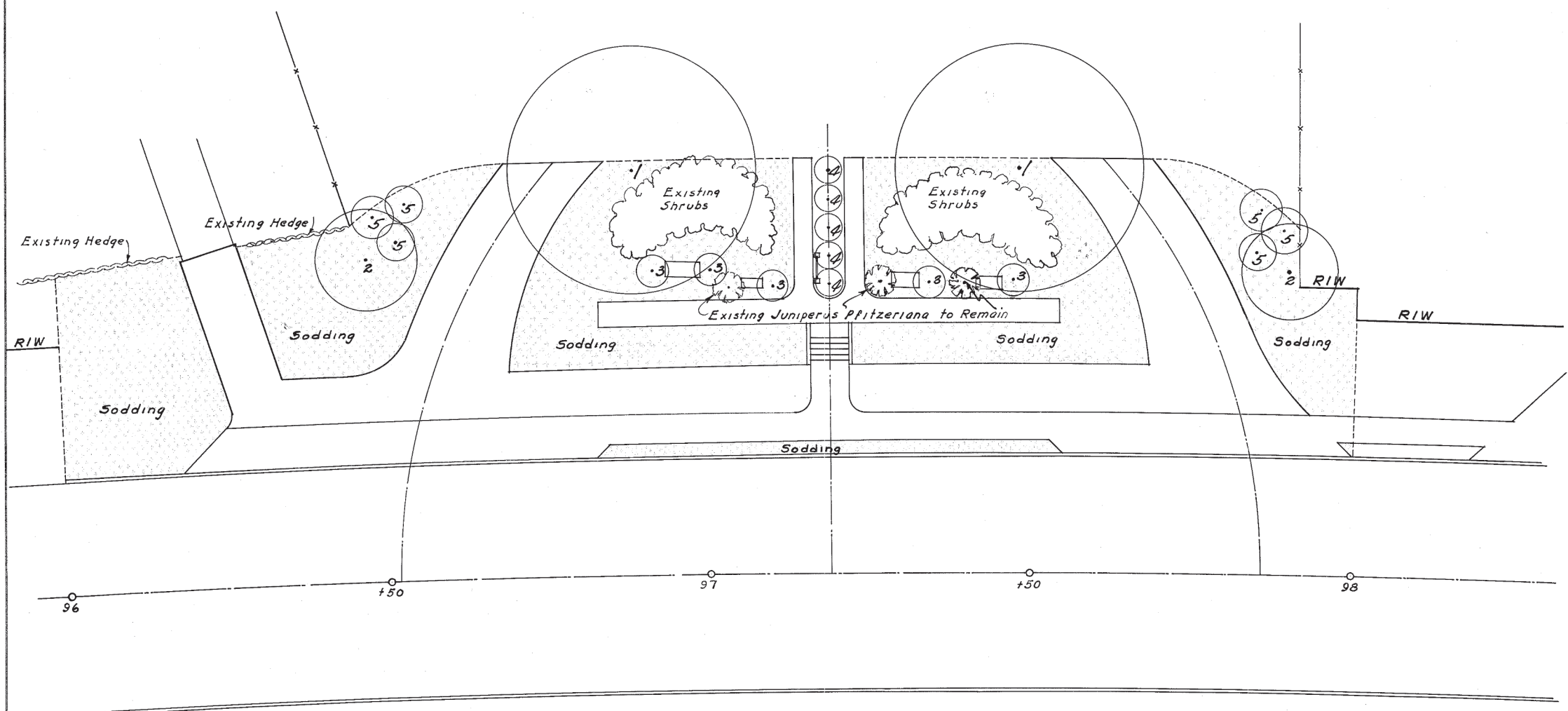
SEEDING & PLANTING QUANTITIES

ITEM	KEY NO.	QUANT.	NAME	SIZE
L-14	4		Acer Saccharum (Sugar Maple)	1 1/2" - 1 3/4" Caliper
L-13	55		Spiraea Tomentosa (Hardhack)	2-3'
L-9	880		Sq. Yds. Seeding (Area Cross hatched)	

Quantities above carried to Sheet No 12

PLANTING & SODDING DETAIL

STA. 96+00 TO 98+00 LT.



SODDING & PLANTING QUANTITIES

ITEM	KEY NO.	QUANT.	DESCRIPTION	SIZE
L-14	1	2	<i>Acer Saccharum</i> (Sugar Maple)	1 1/2 - 1 3/4 Caliper
L-14	2	2	<i>Malus Floribunda</i> (Japanese Flowering Crab Apple, B&B(16"))	5 - 6'
L-14	3	5	<i>Juniperus Virg. Pfitzeriana</i> (Pfitzer Juniper) B&B(15")	3 - 4'
L-14	4	5	<i>Juniperus Communis Depressa</i> (Prostrate Juniper) B&B(15")	3 - 4'
L-13	5	6	<i>Viburnum Lantana</i> (Wayfaring Tree)	4 - 5'
L-10		430	Sq. Yds. Sodding	

NOTE - All quantities above carried to sheet No. 3

SUMMARY OF QUANTITIES

Sheet No.	Strow Mulching			TREE PLANTING ITEM L-14										SHRUB PLANTING ITEM L-13				
	Top Soil Furnished & Placed Item L-2 Sq. Yd.	Seeding Item L-18 Sq. Yd.	Sodding Item L-10 Sq. Yd.	Seeding Item L-9 No. 1 Sq. Yd.	Seeding Item L-9 No. 2 Sq. Yd.	Liriodendron Tulipifera (Tulip Tree) 1 1/2 - 1 3/4" B & B (27") Each	Ulmus Americana Moline (Moline Elm) 1 1/2 - 1 3/4" Caliper Each	Acer Saccharum (Sugar Maple) 1 1/2 - 1 3/4" Caliper Each	Tilia Glabra (American Linden) 1 1/2 - 1 3/4" Caliper Each	Cercis Canadensis (American Red bud) 4-5' B & B (15") Each	Malus Floribunda (Japanese Fl. Crab Apple) 5-6' B & B (16") Each	Juniperus Chin. Pfitzeriana (Pfitzer's Juniper) B & B (15") 3-4' Each	Juniperus Communis Depressa (Prostrate Juniper) B & B (15") 3-4' Each	Spiraea Tomentosa (Hardhack) 2-3' Each	Berberis Thunbergii (Japanese Barberry) 2-3' Each	Viburnum Lantana (Wayfaring Tree) 4-5' Each	Ligustrum Iboia Regelianum (Regel Privet) 2-3' Each	Cydonia Japonica (Japanese Fl. Quince) 3-4' Each
3	362			2002				3										
4	2787			4811			3	5	1									
5	14924			19161			5	2	4									
6	22032	1667		24593	1667		13	3										
7	13415	1333	171	16045	1333	2	6	8	2	9	6		3	4	2	30		8
8	2269			2679			4	5										
9	419		882	350			5	8			2	5	5			6		
10	679		830	300			3	3	5									
11	11598			16822			7	8										
12	4072			5509			3	7					55					
Total	73157	3000	1883	92272	3000	2	49	52	12	9	8	5	5	58	4	8	30	8

GENERAL SUMMARY

ITEM	DESCRIPTION	QUANT.	UNIT.
L-2	Top Soil Furnished & Placed (2" Thick)	73,157	Sq. Yd.
L-18	Strow Mulching	23,000	Sq. Yd.
L-10	Sodding	1,883	Sq. Yd.
L-9	Seeding No. 1	92,272	Sq. Yd.
L-9	Seeding No. 2	3,000	Sq. Yd.
L-14	Ulmus Americana Moline (Moline Elm) 1 1/2 - 1 3/4" Caliper	49	Each
L-14	Acer Saccharum (Sugar Maple) 1 1/2 - 1 3/4" Caliper	52	Each
L-14	Tilia Glabra americana - American Linden 1 1/2" to 1 3/4" Caliper	12	Each
L-14	Cercis Canadensis (American Red bud) 4-5' B & B (15")	9	Each
L-14	Malus Floribunda (Japanese Flowering Crab-Apple) 5-6' B & B (16")	8	Each
L-13	Juniperus Chinensis/Pfitzeriana (Pfitzer's Juniper) B & B (15") 3-4'	5	Each
L-13	Juniperus Communis Depressa (Prostrate Juniper) B & B (15") 3-4'	5	Each
L-13	Spiraea Tomentosa (Hardhack) 2-3'	58	Each
L-13	Berberis Thunbergii (Japanese Barberry) 2-3'	4	Each
L-13	Viburnum Lantana (Wayfaring Tree) 4-5'	8	Each
L-13	Ligustrum Iboia Regelianum (Regel Privet) 2-3'	30	Each
L-13	Cydonia Japonica (Flowering Quince) 3-4'	8	Each
L-14	Liriodendron Tulipifera (Tulip Tree) 1 1/2 - 1 3/4" Caliper. B & B (27")	2	Each