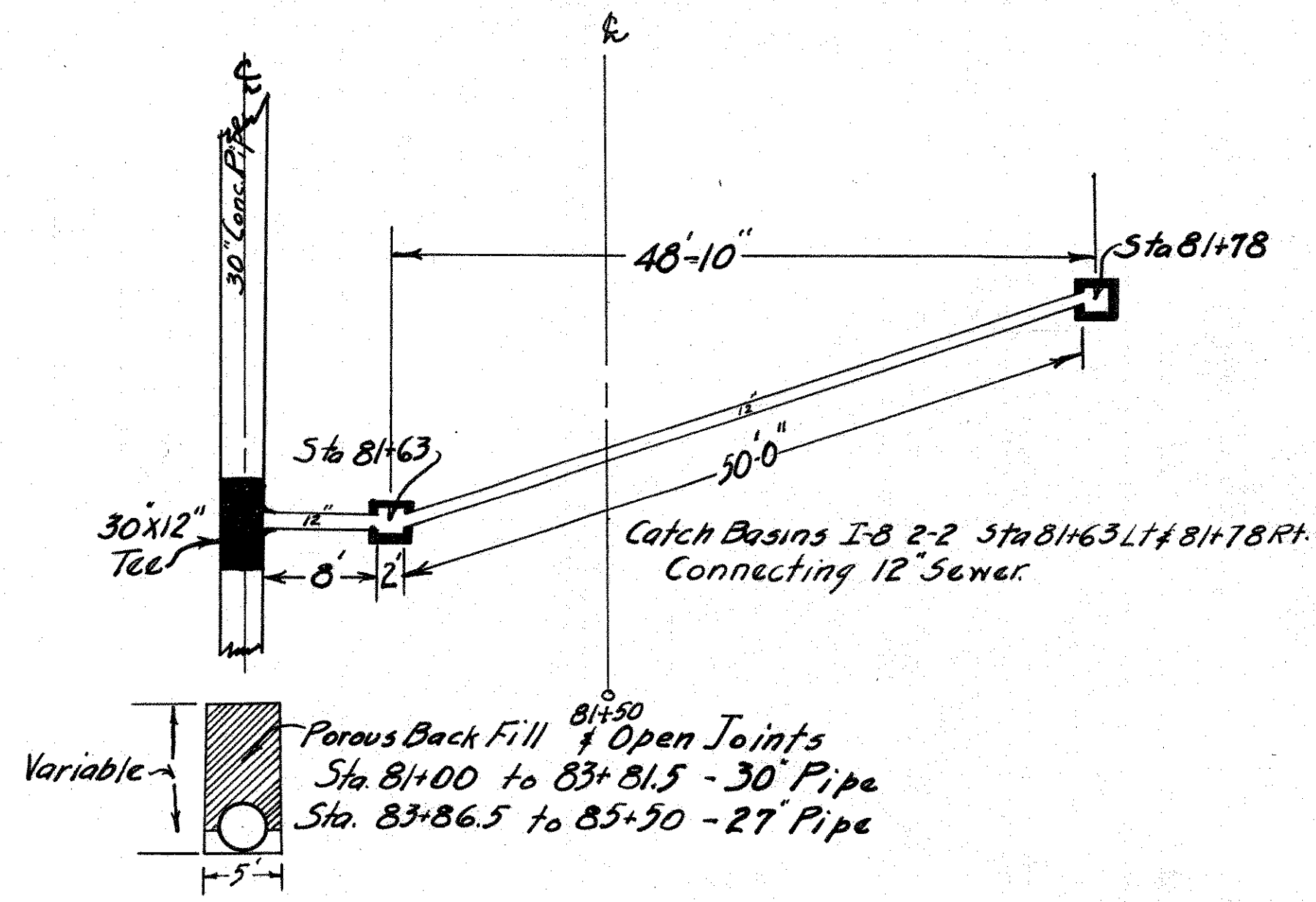


SUPPLEMENTAL PRINTS OF STANDARD CONSTRUCTION DRAWINGS

- DRAINS & SEWERS I-1,2,3,4#5
- CATCH BASINS I-B CB 1-2#2-2
- " " I-B CB No.3
- STANDARD MANHOLE I-B MH No.1
- " " I-B MH No.2
- " " I-B MH No.3

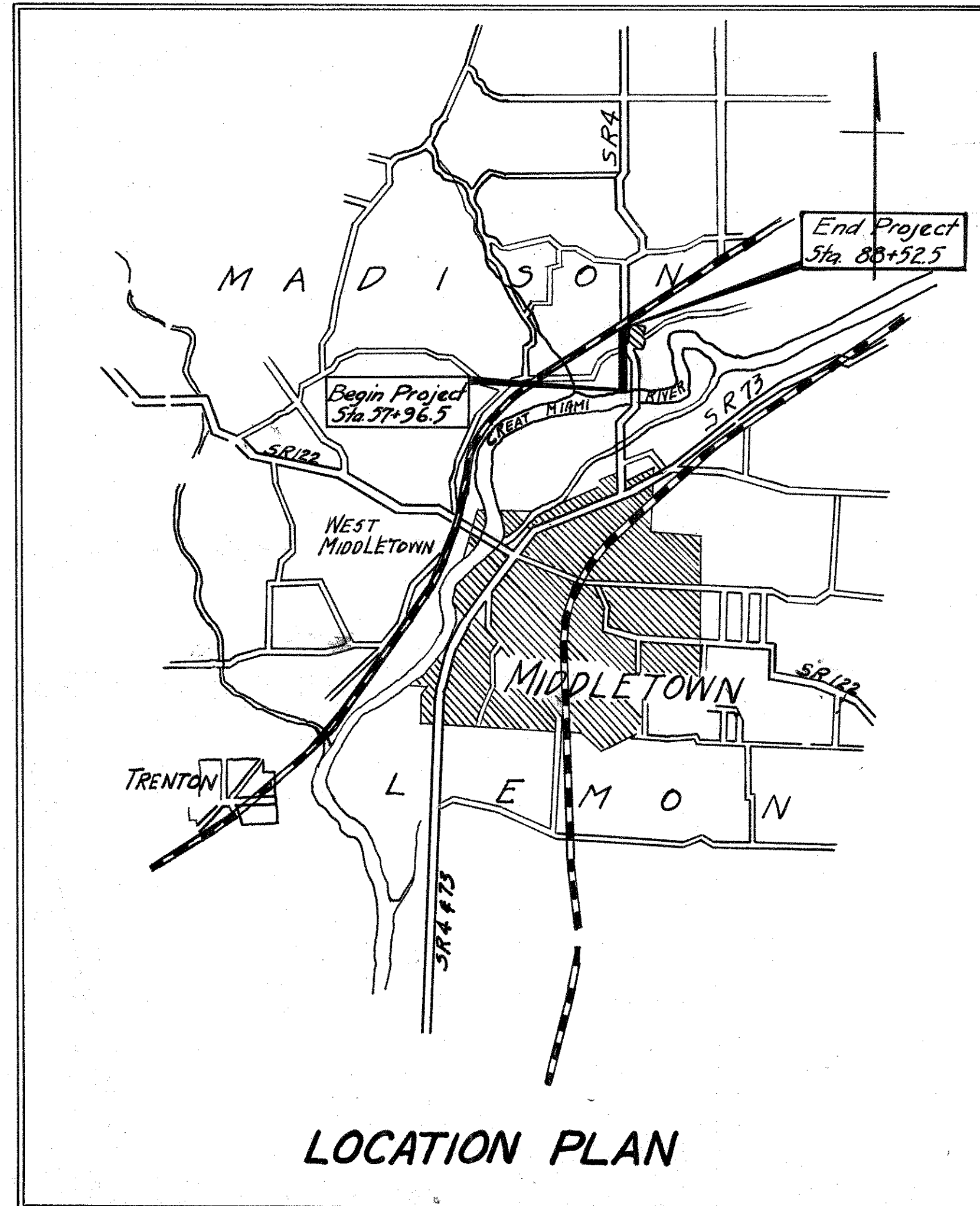
SUMMARY OF QUANTITIES

Station	Side	PIPE							Pipe Specials Item I-5 Each	Catch Basins Std. Dwg I-B CB Each	Man Holes Std. Drawing I-B M.H. Each				
		Item I-2													
		12"	27"	30"	36"	27"	30"	12"							
57+96.5 to 61+76.5	Lt				380										
61+78.75	Lt									1					
61+81 to 65+61	Lt				380										
65+63.25	Lt									1					
65+65.5 to 69+47.5	Lt				382										
69+49.75	Lt									1					
69+52 to 73+06	Lt				334										
73+08.25	Lt									1					
73+10.5 to 76+20.5	Lt			310											
76+22.75	Lt									1					
76+25 to 79+33	Lt			310											
79+37	Lt									1					
79+39 to 81+00	Lt			161											
81+00 to 83+81.5	Lt					277.5									
81+63	Lt	B					1	1							
81+78	Rt					50		1							
82+50	Lt	12					1	1							
83+84	Lt									1					
83+84	Rt					37		1							
83+86.5 to 85+50	Lt				159.5										
85+50 to 86+14.5	Lt		64.5												
86+17	Lt	12					1	1							
86+17	Rt	6						1		1					
86+17	Rt					37		1							
86+19.5 to 88+43.5	Lt		224												
88+46	Lt					37		1		1					
88+46	Rt							1							
88+48.5 to 88+52.5	Lt		4												
Totals		38	292.5	781	1496	159.5	277.5	161	1	2	5	3	1	5	3



STATE OF OHIO
DEPARTMENT OF HIGHWAYS
W.P.A. STATE WIDE HIGHWAY PROJECTS
STATE WIDE OFFICIAL PROJECT No. 65-1-42-48

BUTLER COUNTY
S.H. 186 SEC. D.(PT) S.R. 4
NET LENGTH OF PROJECT .58 MILES



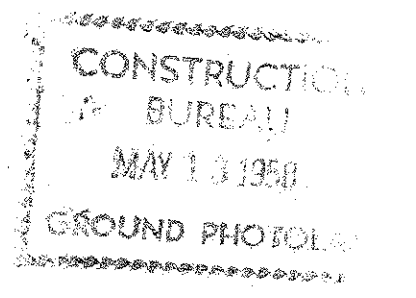
LOCATION PLAN

BUTLER COUNTY
S.H. 186 SEC. D (PT)
HWY. AUTHN No.
W.P.A. JOB No. 9-702

GENERAL SUMMARY				
Item No.	Spec. No.	Description	No. Units	Units
1	E-1	Clearing & Grubbing Right of Way	7600	Sq. Yds.
2	I-2	Trench Excavation & Backfill (Av. Depth - 9')	6500	C.Y.
3	I-3.02	Porous Backfill & Removal of Surplus Dirt	750	C.Y.
4	E-2	Sheeting & Bracing Trench	3056	Lin. Ft.
5	I-2	Sewer Pipe in Place		
		12" Sewer	38	Lin. Ft.
		12" Sewer Under Pavement	161	" "
		27" "	452	" "
		30" "	1058	" "
		36" "	1496	" "
		27"x12" Tees	1	Ea.
		30"x12" Tees	2	"
6	I-B	Catch Basins Std. Dwg. I-B-No.2-2	5	"
		" " I-B-No.3	3	"
7	I-B	Manholes " " I-B-No.1	1	"
		" " I-B No.2	5	"
		" " I-B No.3	3	"
8	I-17	Traffic Bound Aggregate on side Approaches & Drives	30	C.Y.

The right of way necessary for this improvement will be provided by The State of Ohio

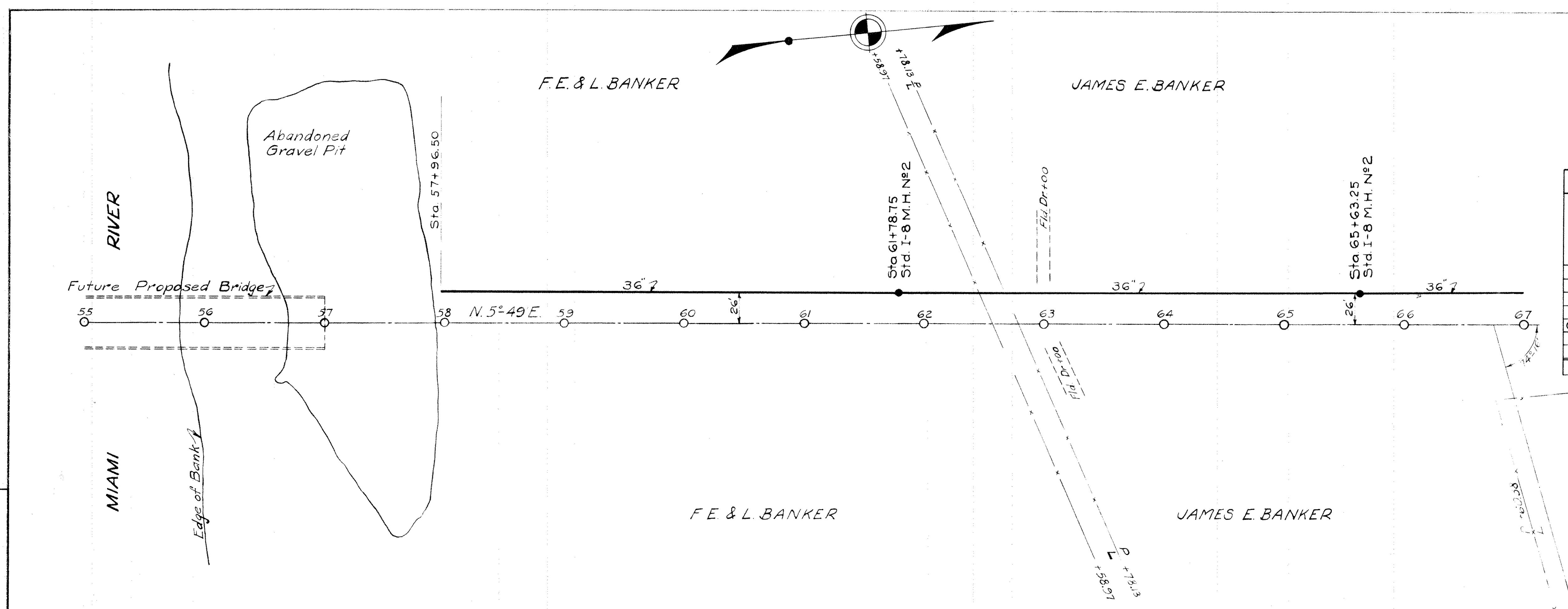
I hereby approve these plans and declare that provision for maintenance and safety of traffic will be made as herein described.



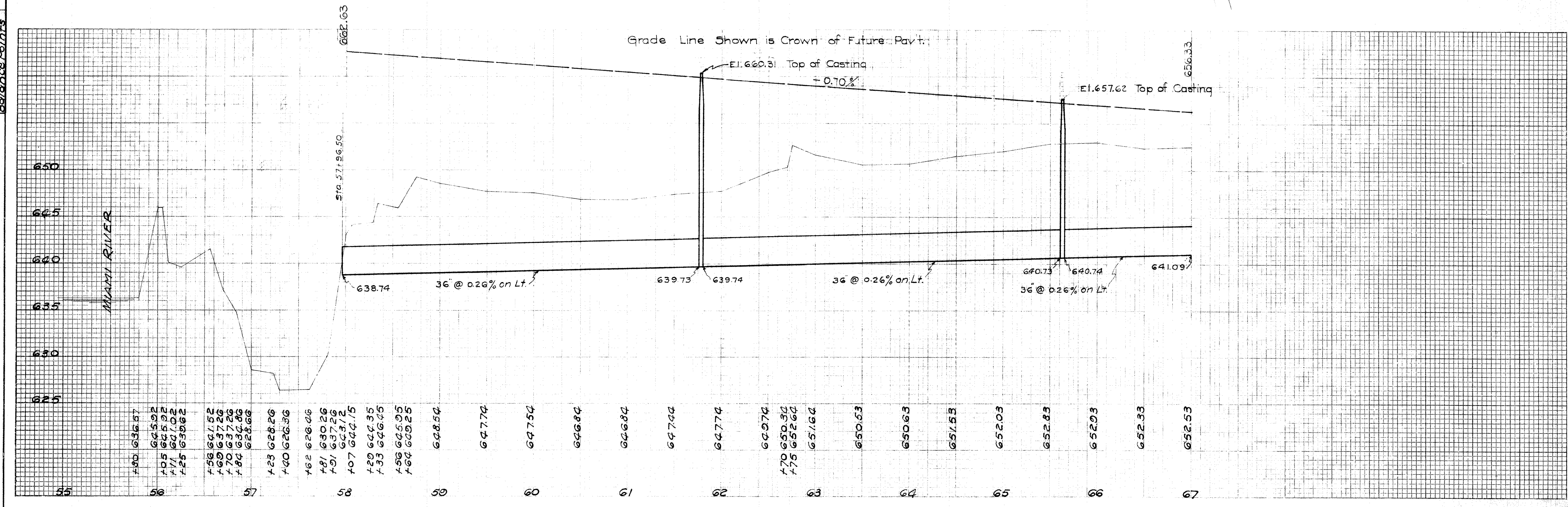
- Approved Parker A. Brumfield 9/19/40
Resident Division Deputy Director Dir. B. Date
- Approved J. H. Mearns 4/13/40
Chief Engineer Bureau of Maintenance Date
- Approved J. J. Jones 4-12-40
First Asst. Director Chief Engineer Date
- Approved Edw. A. Brumfield 4-18-40
Director of Highways Date

- Recommended for Approval
- District Engineer
Public Roads Administration
Federal Works Agency
- Approved
- Commissioner
Public Roads Administration
Federal Works Agency

STORM SEWER			
Station	Side	Pipe Item I-2 Lin. Ft. 36"	Manholes Std. Dwg. I-8 M.H. N ^o 2 Each
57+96.50 to 61+76.50	Lt.	380	
61+78.75	Lt.		1
61+81 to 65+61	Lt.	380	
65+63.25	Lt.		1
65+65.50 to 67+00	Lt.	134.5	
Totals		894.5	2



CHECKED
 Drainage
 Boxes
 Balance Points

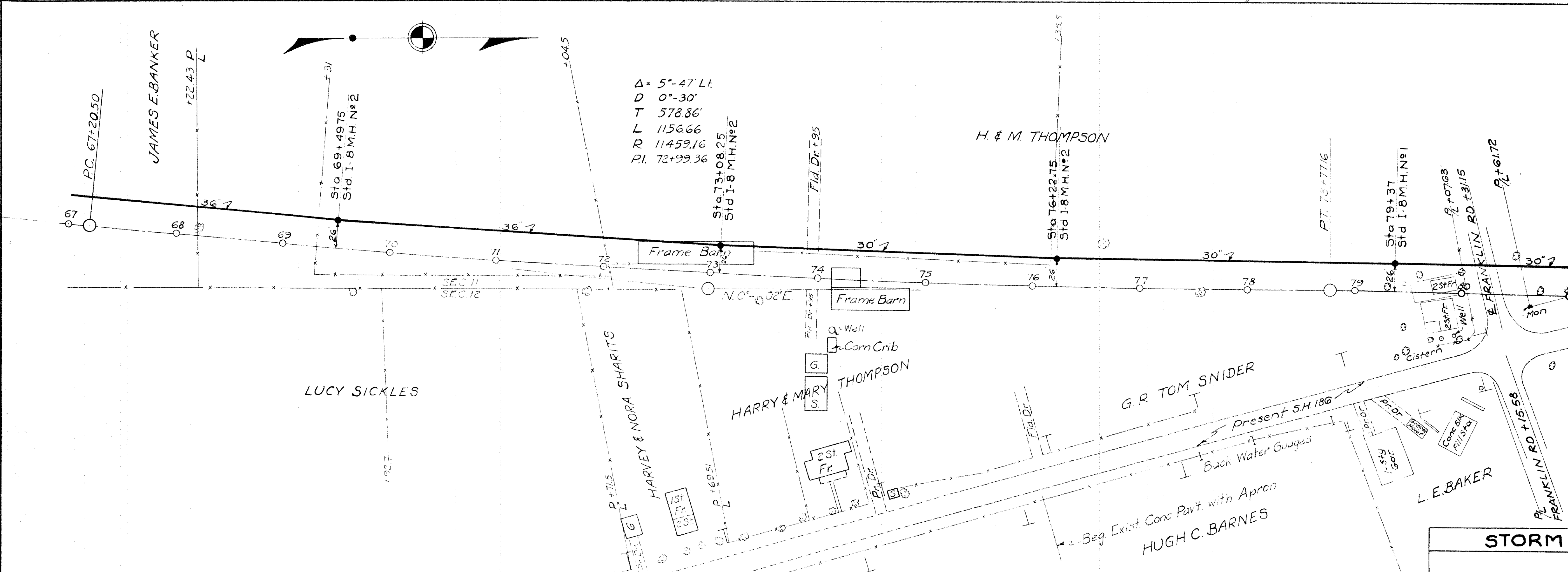


STA. 55+00 TO STA. 67+00

FED. RD. DIST. NO.	STATE	PROJECT	FISCAL YEAR
10	OHIO	FAH 825 E D	19

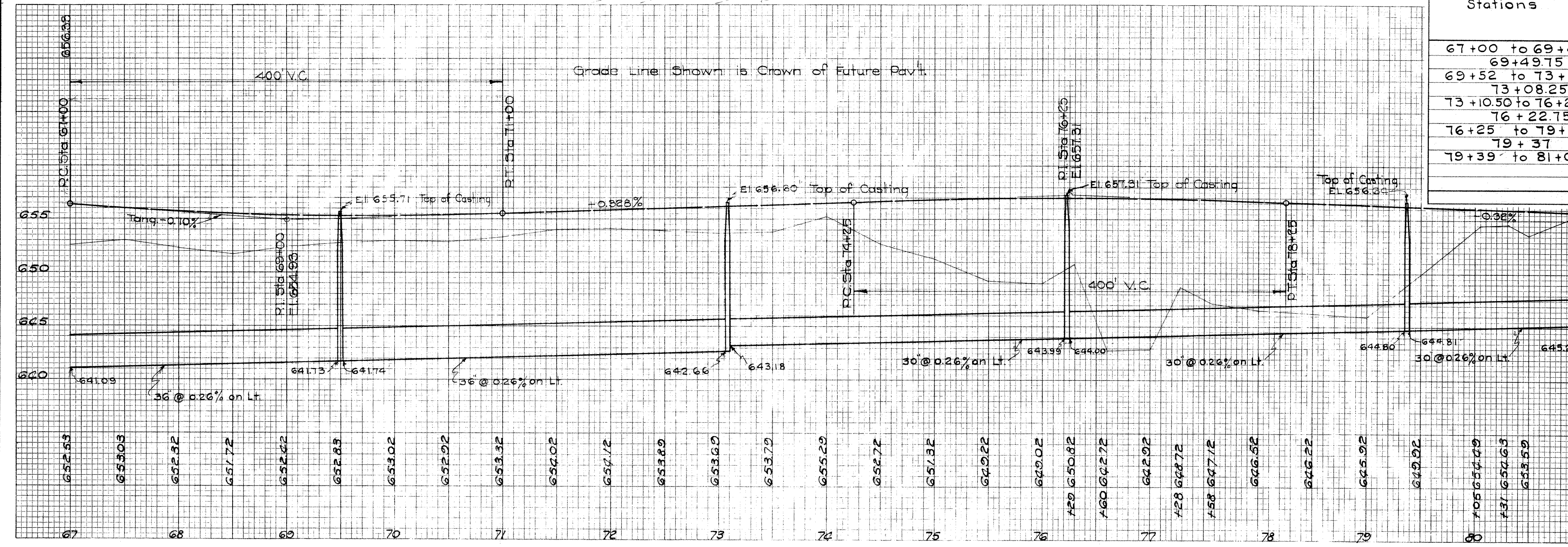
3

**BUTLER COUNTY
S.H. 186 SEC. 'D' (PD)
GRADE SEPARATION**



$\Delta = 5^{\circ}47' Lt.$
 $D = 0^{\circ}30'$
 $T = 578.86'$
 $L = 1156.66'$
 $R = 11459.16'$
 $PI = 72+99.36'$

CHECKED
 Drainage
 Boxes
 Balance Points

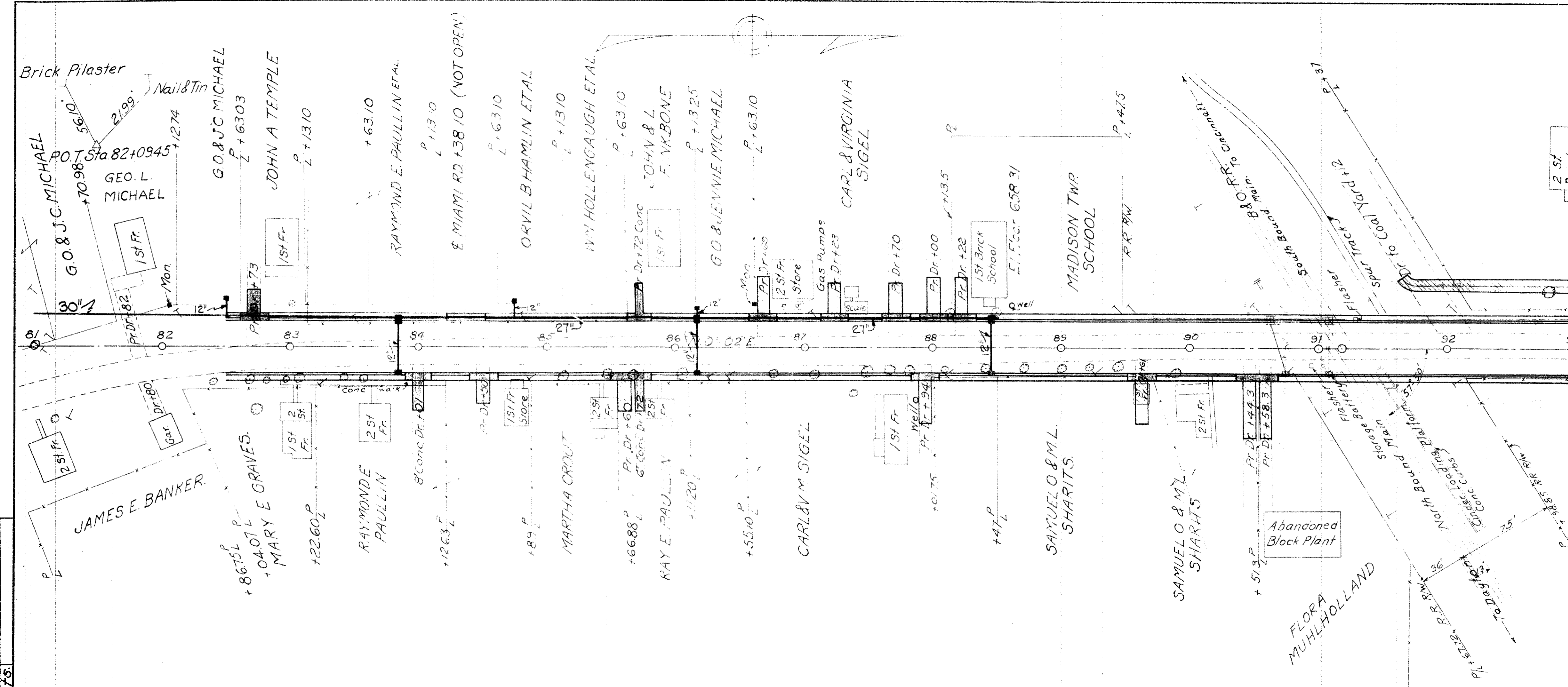


STORM SEWER				
Stations	Side	Pipe Item I-2		Manholes Std. Dwg. I-8 M.H. Each
		30"	36"	
67+00 to 69+47.50	Lt.		247.5	
69+49.75	Lt.			1
69+52 to 73+06	Lt.		354.0	
73+08.25	Lt.			1
73+10.50 to 76+20.50	Lt.	310'		
76+22.75	Lt.			1
76+25 to 79+35	Lt.	310'		
79+37	Lt.			1
79+39 to 81+00	Lt.	161'		
TOTALS		781'	601.5'	3

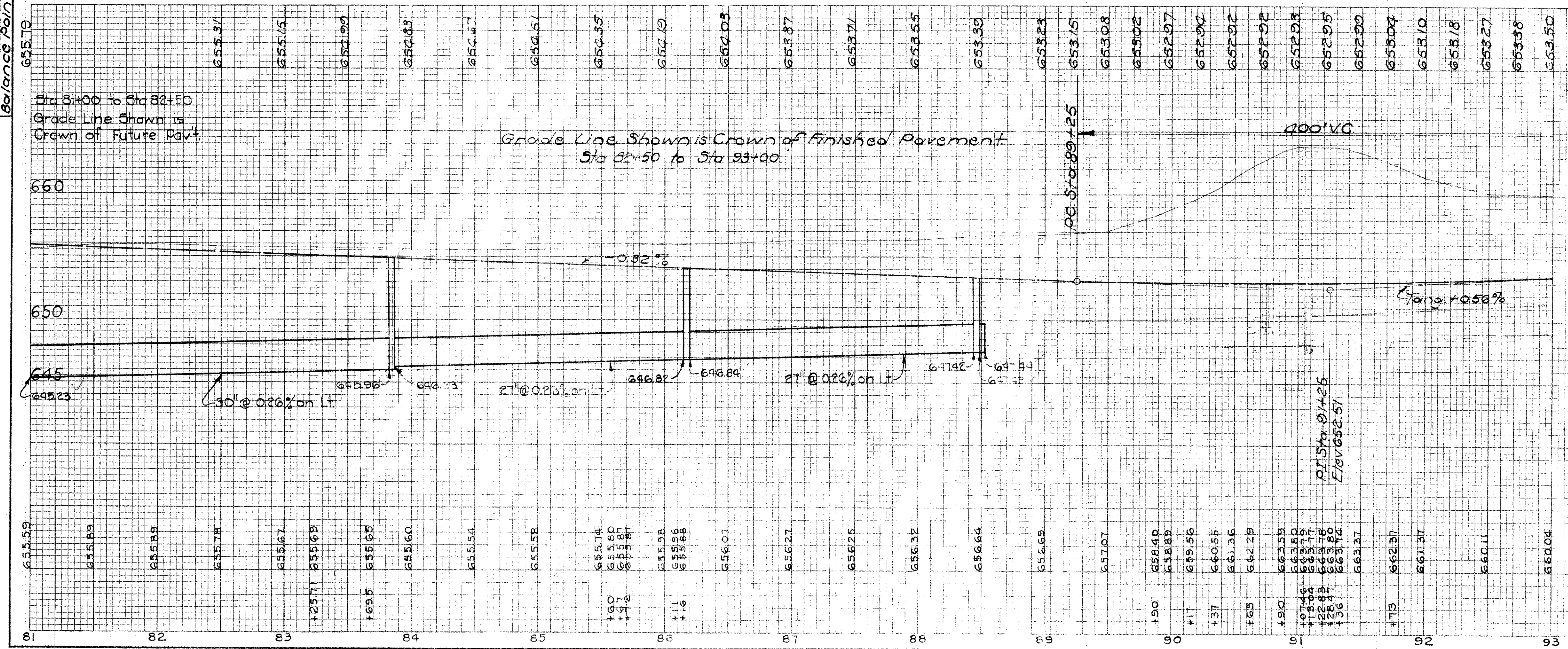
STA. 67+00 TO STA 81+00

BUTLER COUNTY
S.H. 186 SEC. D(PT)
GRADE SEPARATION

STORM SEWER							
Station	Side	Pipe Item I-2 Lin. Ft.		Pipe Specials Item I-5 Each		Catch Basins Std. Dwg. I-8 C.B. Each	Manholes I-8 M.H. N°3. Each
		Under Pavt	12'	27'x12'	30'x12'		
STA. 81+00 to STA. 88+52.5							
81+00 to 83+81.50	Lt.		277.5				
82+50	Lt.	12				1	1
83+84	Lt.						1
83+84	Rt.		37				
83+86.5 to 86+14.5	Lt.		224				
84+75	Lt.	12				1	1
86+17	Lt.	6				1	1
86+17	Rt.		37				
86+19.5 to 88+43.5	Lt.		224				
88+46	Lt.						1
88+46	Rt.		37				
88+48.5 to 88+52.5	Lt.		4				
Totals		30	452	277.5	111	1	1



CHECKED
 Drainage Boxes
 Balance points.



STA. 81+00 TO STA. 93+00