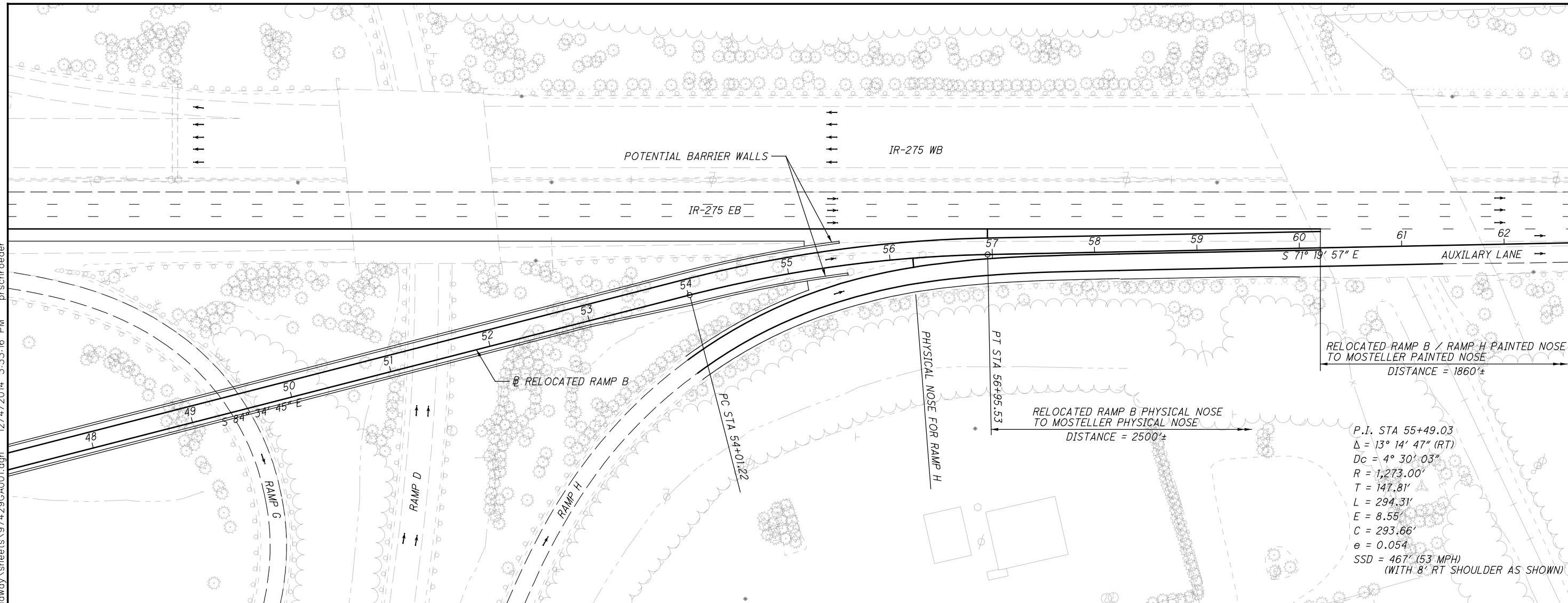
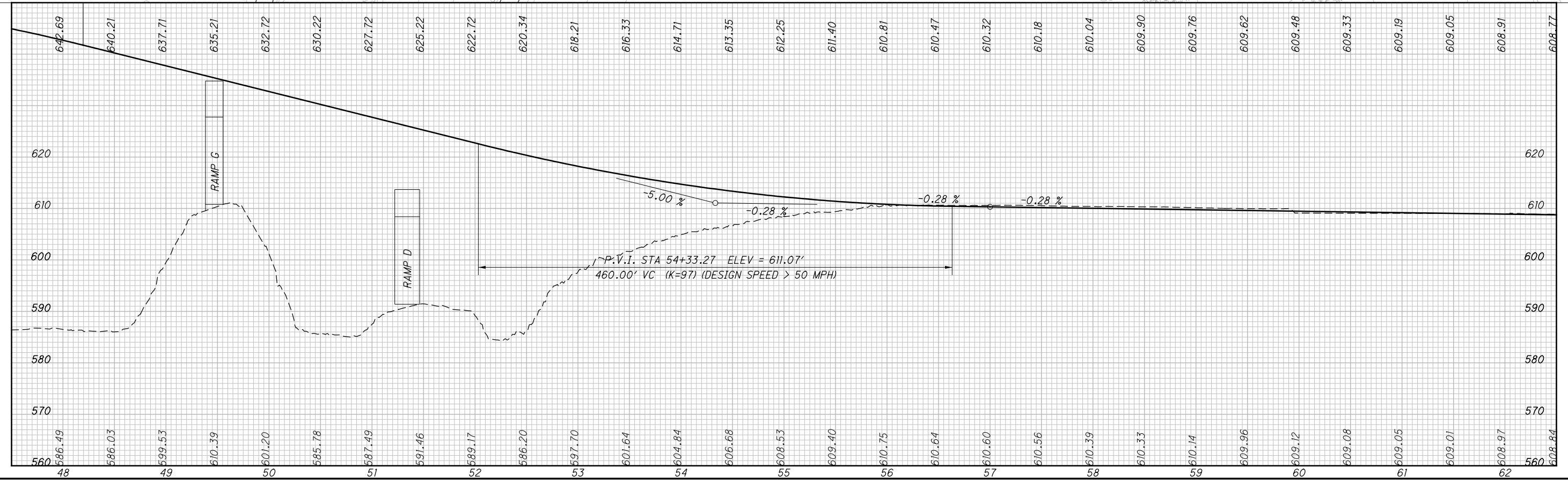


pw:\GFPWING02_corporate_gannettflerning.com\GFPW02_Documents\Projects\58191\97429\roadway_sheets\97429CA001.dgn 12/4/2014 3:33:16 PM prschroeder



P.I. STA 55+49.03
 $\Delta = 13^\circ 14' 47" (RT)$
 $Dc = 4^\circ 30' 03"$
 $R = 1,273.00'$
 $T = 147.81'$
 $L = 294.31'$
 $E = 8.55'$
 $C = 293.66'$
 $e = 0.054$
 $SSD = 467' (53 MPH)$
 (WITH 8' RT SHOULDER AS SHOWN)



ALTERNATIVE 6 - PLAN AND PROFILE
RELOCATED RAMP B (SB IR-75 TO EB IR-275)

HAM-75/275
PID 97429

