



Department of
Transportation



Collaborate, Connect, Communicate: **ODOT & Tri-State Trails' Early Partnership and Use** **of VPI for Mill Creek Triangle Trail**

Presenters



Brad Bowers, AICP
Tri-State Trails

Project Manager
brad@tristatetrails.org

- Provides technical assistance to local governments & community stakeholders on regional trail and bikeway projects in Ohio, Kentucky, and Indiana
- Manages trail feasibility studies, comprehensive trail plans, and funding strategies
- Experience coordinating public engagement using a variety of tools and strategies
- Frequent commuter cyclist, bringing practical insight to active transportation planning



Anthony Pankala, PE
ODOT, District 8

Environmental Engineer
Anthony.Pankala@dot.ohio.gov

- Scopes environmental tasks for LPA and ODOT projects with District 8 (Cincinnati)
- Creates, reviews, and coordinates environmental documents per ODOT OES manuals and guidelines
- Early adaptor and avid user of Virtual Public Involvement (VPI) and enthusiastic about sharing my knowledge and experience with using PublicInput through ODOT
- Passionate about multimodal transportation, public transportation, and ADA accessibility



Outline

- Background
- Above & Beyond
- 1st Time Experience
- Website Walk-thru
- Benefits
- Lessons Learned

About Tri-State Trails



EXPAND

advocate for connecting
and expanding the regional
trail and bikeway network



LEARN

collect and maintain
data on trails locally



ASSIST

provide technical assistance
to local governments
and community groups



CONNECT

convene trail planners, managers,
advocates, and users to
share best practices



PROMOTE

promote and
celebrate existing
trails in the tri-state





**MILL CREEK
TRIANGLE
TRAIL**

FEASIBILITY STUDY

AUGUST 2025



Mill Creek Triangle Trail Feasibility Study

The MCT Feasibility Study is a multi-jurisdictional effort and vision for a 40+ mile regional trail network in central and northern Hamilton County. The trail will connect neighborhoods to the Mill Creek, local business districts, key destinations, and Great Parks' regional greenspaces like Winton Woods, Glenwood Gardens, and Sharon Woods, while also linking to Cincinnati's planned 34-mile CROWN loop. The vision is to create an equitable amenity for both transportation and recreation.

Project Team



**Planning and Project
Management**



Engineering Consultant



Lawhon & Associates, Inc.
ENVIRONMENTAL CONSULTING AND ENGINEERING SERVICES



Environmental Subconsultant

PROJECT PARTNERS



MILL CREEK
TRIANGLE
TRAIL



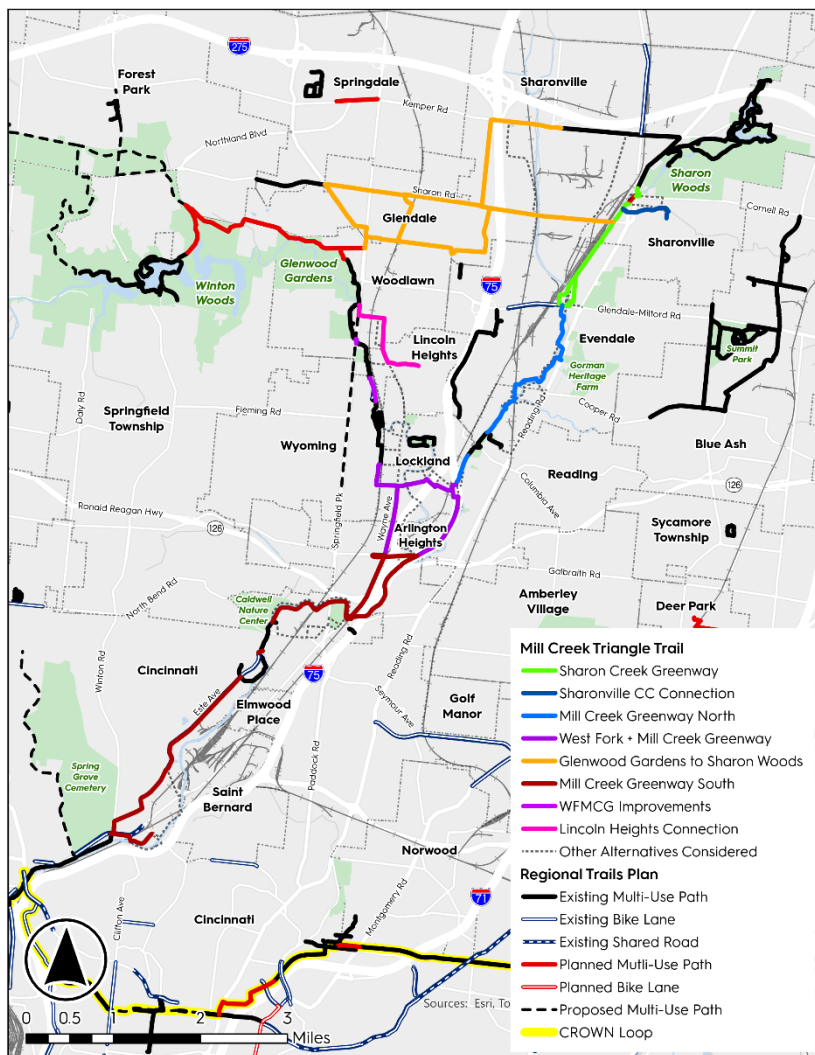


Mill Creek Triangle Trail Feasibility Study Objectives

1. Form an active transportation network in the center of Hamilton County
2. Explore trail alignment options and recommend a preferred route
3. Conduct public engagement for the proposed Mill Creek Triangle Trail
4. Position trail segments to apply for federal and state grant funding for construction

Mill Creek Triangle Trail Overview Map

- Study area includes ten cities and villages
- Steering committee includes reps from each jurisdiction, along with county, state, and regional government agencies, and community organizations
- Working Groups - Study area was broken into six focus areas





Original Alignment



New Unified Alignment
(Alternative 1)

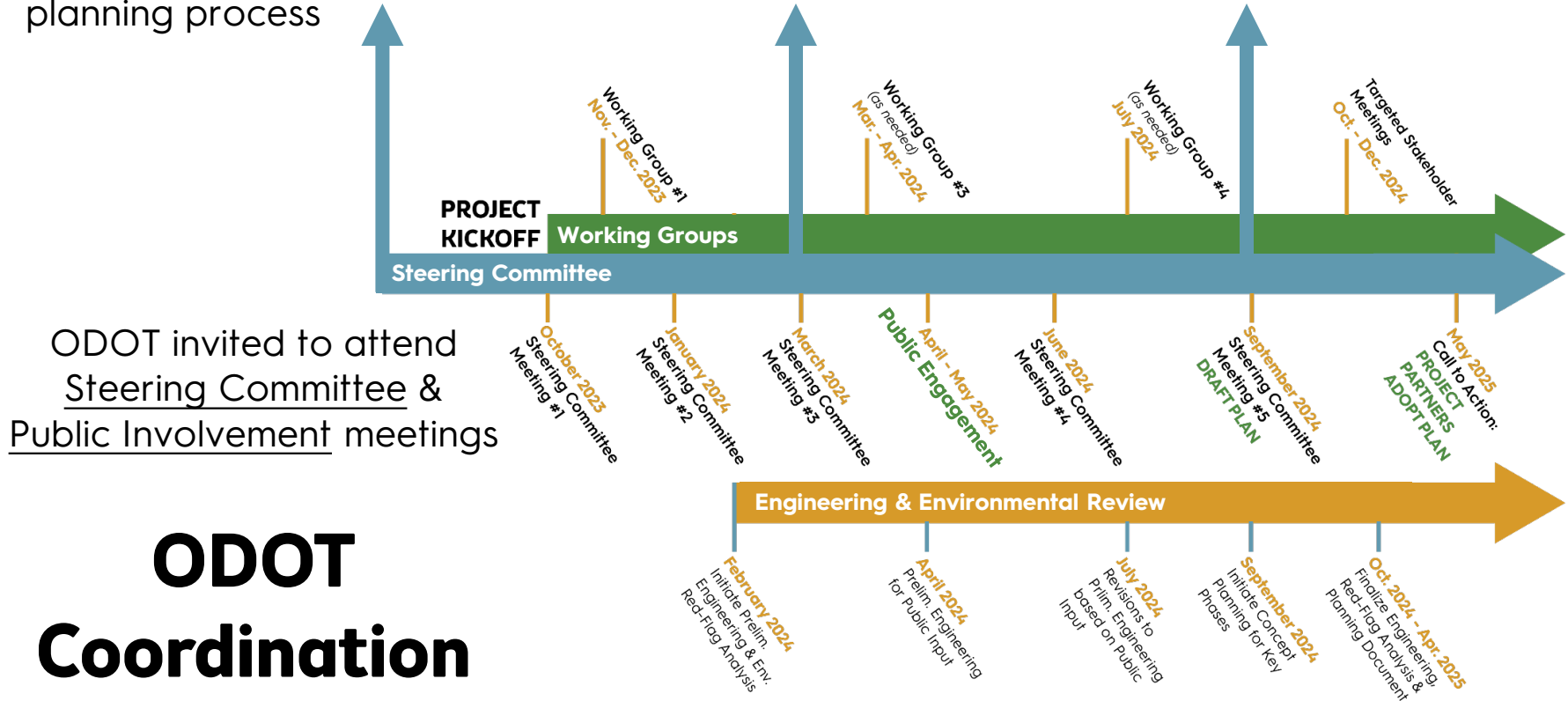
Mill Creek Triangle Trail ODOT Coordination

- I-75 Thru-The-Valley Project
- Project Scoping – ODOT Project Development Process (PDP)
- Public Engagement – NEPA Requirements
- Funding Strategy - Setting Mill Creek Triangle Trail segments up for success for future federal funding
- Property Acquisition Strategy

ODOT review of project scope (based on ODOT PDP) and early coordination on planning process

ODOT review of Public Input Plan - TST use of VPI software

ODOT review of draft feasibility study and preliminary engineering



ODOT Coordination

ODOT PROJECT DEVELOPMENT PROCESS (PDP)



July 2018

Prepared by ODOT Division of Planning
Office of Environmental Services



Project Scope – PDP

- ODOT review of project scope – assistance in selecting required tasks and appropriate path
- PDP Phases for MCT Study – Planning, Preliminary Engineering, and Environmental Engineering (red-flag analysis)
- Review of Purpose & Need Statement
- Design Standards – ODOT MMDG



Tri-State Trails | Mill
Creek Triangle Trail
Feasibility Study

THANK YOU FOR VISITING!

Tri-State Trails is leading the Mill Creek Triangle Trail Feasibility Study, a multi-jurisdictional effort to develop a 40+ mile regional trail network in central and northern Hamilton County. The vision for the Mill Creek Triangle Trail is to create an equitable transportation and recreation amenity that connects residential neighborhoods to the Mill Creek; to local business districts and key destinations; to Great Parks' regional greenspaces like Winton Woods, Glenwood Gardens, and Sharon Woods; and to the planned CROWN 34-mile trail loop in Cincinnati.



PublicInput

Virtual Public Involvement (VPI)

- Tri-State Trails asked and received access to PublicInput to conduct Virtual Public Involvement (VPI)
- First time use of VPI software to conduct public engagement survey
- Ease of use to create project webpage
- PublicInput training sessions
- ODOT review and “tweaking” of project webpage to be more user-friendly



VIRTUAL OPEN HOUSE

WE WANT YOUR INPUT ON PROPOSED TRAILS!

Tri-State Trails is leading the Mill Creek Triangle Trail Feasibility Study, a multi-jurisdictional effort to develop a 40+ mile regional trail network in central and northern Hamilton County, throughout the Mill Creek watershed.

Please visit the Virtual Open House to share your input on the proposed recommendations for the Mill Creek Triangle Trail Feasibility Study!



**Visit the Virtual Open House
to Share Your Feedback!**



Scan the QR Code or visit millcreektriangle.org



Open now through June 10th

PROJECT PARTNERS:

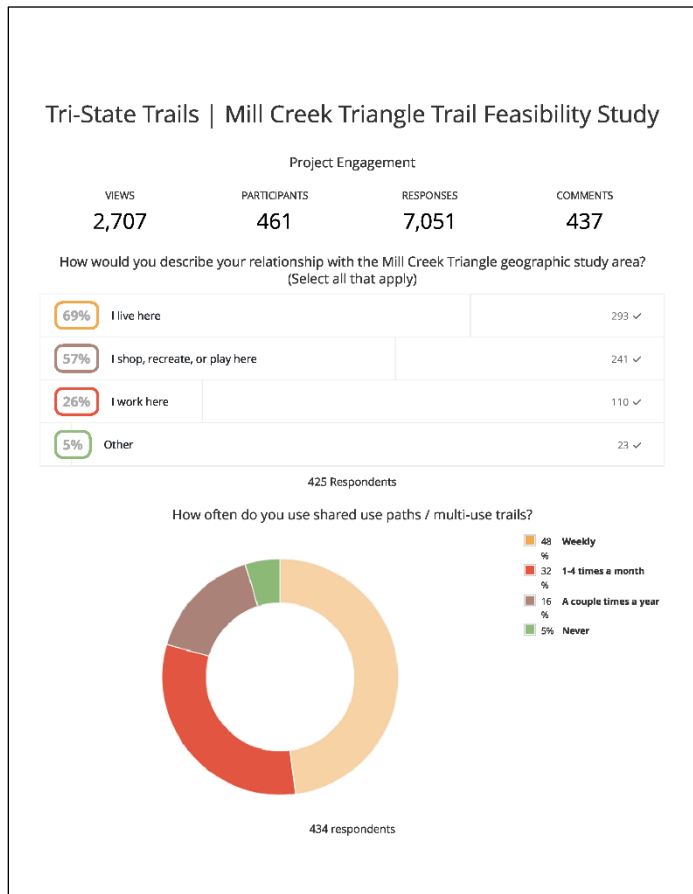
Tri-State Trails • Great Parks • Mill Creek Alliance • Hamilton County Transportation Improvement District
Hamilton County Regional Planning Commission • Ohio Department of Transportation District 8
City of Sycamoreville • Village of Evendale • City of Reading • Village of Glendale • Village of Woodlawn
City of Wyoming • Village of Lincoln Heights • Village of Arlington Heights • Village of Lockland
Springfield Township • City of Blue Ash • First Suburbs Consortium of Southwest Ohio
Millcreek Valley Conservancy District • Connecting Active Communities Coalition • Wyoming Cycling Foundation



Benefits of Using VPI

- Survey / questionnaires
 - Ability to share a lot of information (background, alternatives, focus areas, etc.) using website tabs
- Greater participation
 - Easier to ask and get responses at the convenience of each survey respondent
- Allows participants to directly interact with other comments by responding or “upvoting” comments they agree with
- Easy to share with QR codes and social media posts

Benefits of Using VPI



- Mobile friendly version of project webpage
- Built-in reports / analysis functions to present public feedback data to steering committee
- Ability to use templates / language from previous VPI surveys
- PublicInput Vs. other PI software / methods
- ODOT assistance through the process



Challenges of Using VPI

- More data to process
- Moderating responses to clarify project details
- Difficulty integrating paper survey responses from in-person open house

Website Walk-Thru

MCT VPI Site:

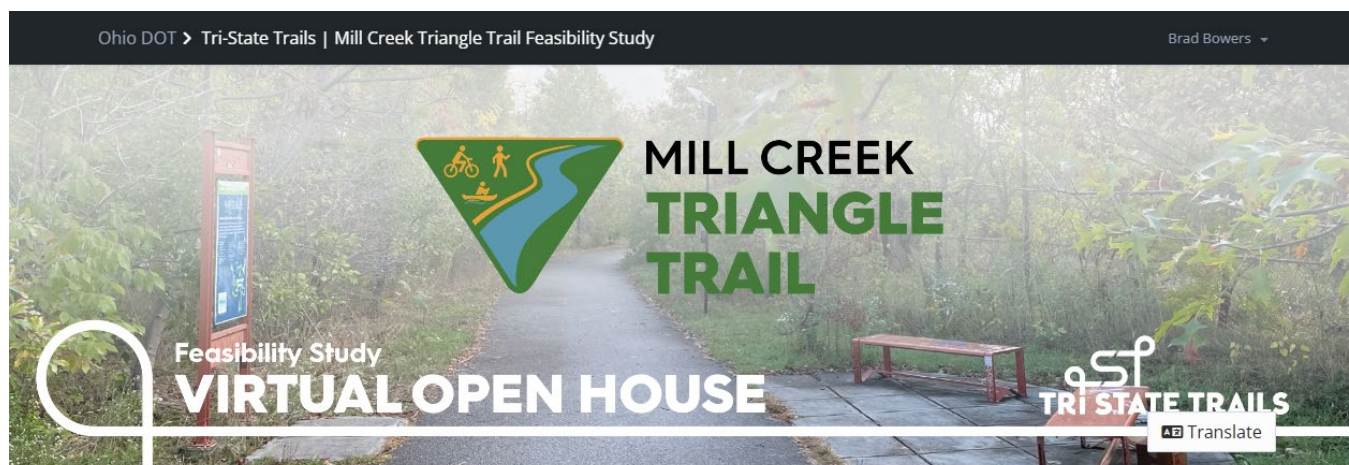
<https://publicinput.com/k4641>

MCT VPI Report:

<https://PublicInput.com/Report/gxkvmm4gkx>

MCT Project Website:

<https://tristatetrails.org/millcreektriangle/>



Tri-State Trails | Mill Creek Triangle Trail Feasibility Study

THANK YOU FOR VISITING!

Tri-State Trails is leading the Mill Creek Triangle Trail Feasibility Study, a multi-jurisdictional effort to develop a 40+ mile regional trail network in central and northern Hamilton County. The vision for the Mill Creek Triangle Trail is to create an equitable transportation and recreation amenity that connects residential neighborhoods to the Mill Creek; to local business districts and key destinations; to Great Parks' regional greenspaces like Winton Woods, Glenwood Gardens, and Sharon Woods; and to the planned CROWN 34-mile trail loop in Cincinnati.

We want your feedback! The project team has developed initial proposed routes and alternatives for the Mill Creek Triangle Trail network. Tri-State Trails is hosting an in-person Public Open House on May 1, 2024 to present an overview of the project and gather input on the proposed trail route alignments. The same information that is being presented at the Public Open House is covered in this Virtual Open House. Please navigate through the tabs below to view proposed trail routes and complete the survey. You can view all the project materials in the documents section below.



Public Open House

May 1 2024 5:30-7:30 PM

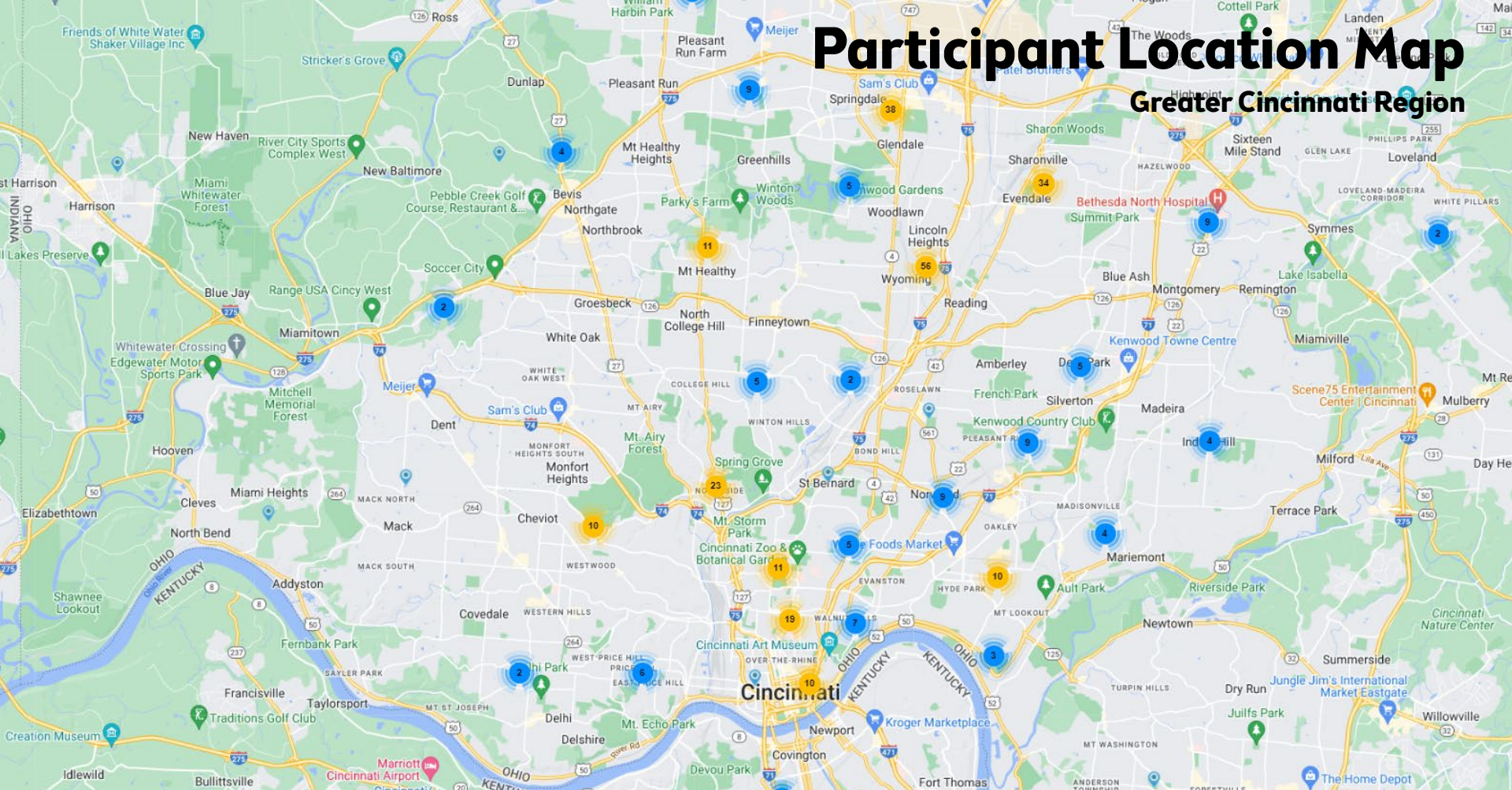


Survey Results

- 5/1/2024 Public Open House: **65-70 attendees**
- Virtual Open House:
 - **2,707 Views**
 - **461 Participants**
 - **437 Comments**

Participant Location Map

Greater Cincinnati Region



383 Responses

[Open](#)

Participant Location

If you live within the Mill Creek Triangle geographic study area, please indicate your community. If you live outside the geographic study area, please use the "Other" option to indicate your community.

City of Sharonville	20 participants	5%
Village of Evendale	25 participants	7%
Village of Glendale	56 participants	15%
City of Wyoming	35 participants	9%
Village of Woodlawn	8 participants	2%
City of Reading	20 participants	5%
Village of Lincoln Heights	3 participants	1%
Village of Arlington Heights	4 participants	1%
Village of Lockland	11 participants	3%
Springfield Township	14 participants	4%
City of Cincinnati	101 participants	26%
Village of Greenhills	2 participants	1%
Other	86 participants	22%

Hamilton County	
Village of Glendale	1
City of Sharonville	1
City of Wyoming	1
Village of Greenhills	1
Springfield Township	1
City of Springdale	6
City of Madeira	4
Columbia Township	3
City of Forest Park	3
City of Norwood	3
City of Blue Ash	3
Sycamore Township	1
Dent	1
Village of Terrace Park	1
City of Harrison	1
Finneytown	1
Green Township	1
Anderson Township	1
Village of Indian Hill	1
Miami Township	1
St. Bernard	1
Colerain Township	1

Cincinnati Neighborhoods	
Madisonville	3
Hyde Park	1
Columbia Tusculum	1
Pleasant Ridge	1
Westwood	1
Oakley	1
East End	1
Mt. Washington	1
Downtown Cincinnati	1
Sayler Park	1
College Hill	1
Evanston	1
East Side	1

NKY Communities	
Newport	3
Covington	3
Fort Mitchell	1
Independence	1
Northern Kentucky	1

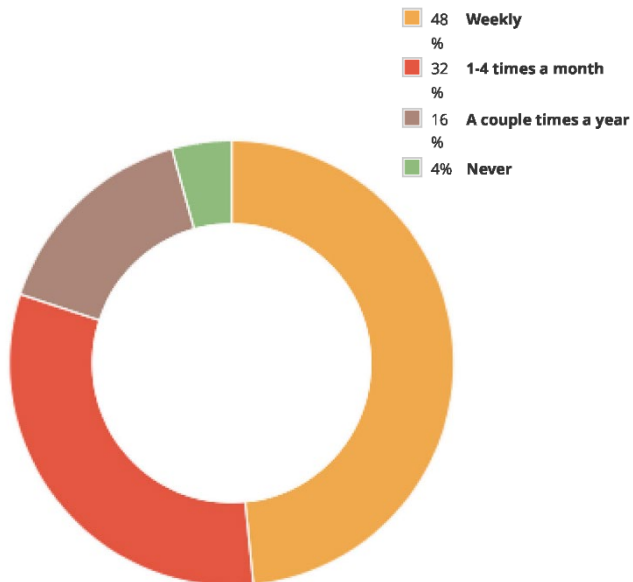
Butler County	
West Chester Township	4
City of Hamilton	2
Butler County	1
City of Fairfield	1

Clermont County	
Amelia	2
Union Township	1

Warren County	
Maineville	1

Shared Use Path Usage

How often do you use shared use paths / multi-use trails?



415 respondents

What type of bicycle facility would you feel comfortable using in the Mill Creek Triangle Trail network? (Select all that apply)

94%	Separated multi-use trails	377 ✓
65%	Protected on-road bicycle lane	260 ✓
24%	On-road bicycle lane	98 ✓
14%	Shared road with signage	55 ✓
3%	I am not comfortable bicycling on any of the listed facilities.	12 ✓

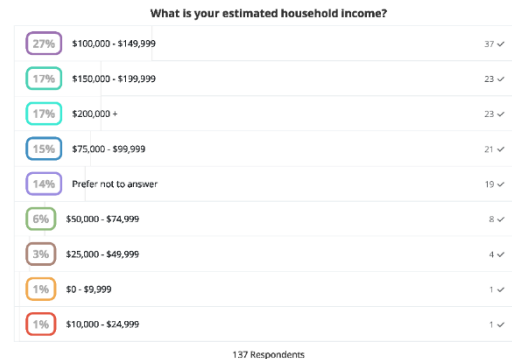
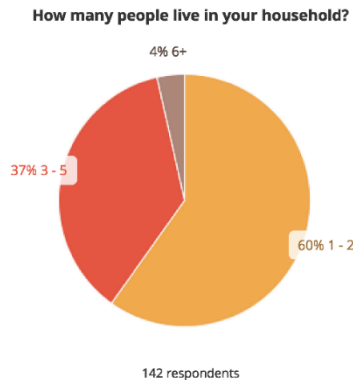
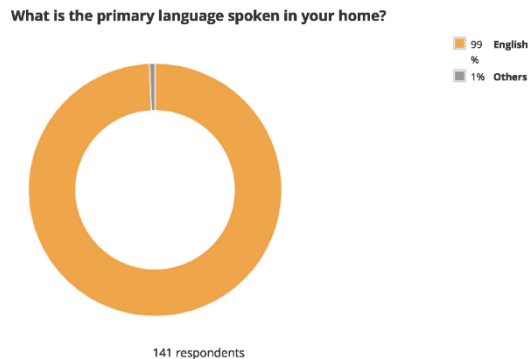
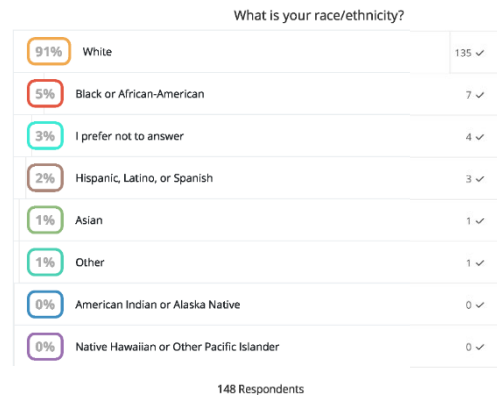
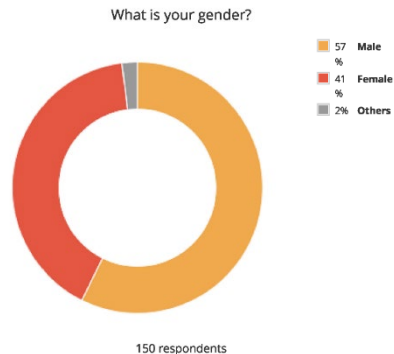
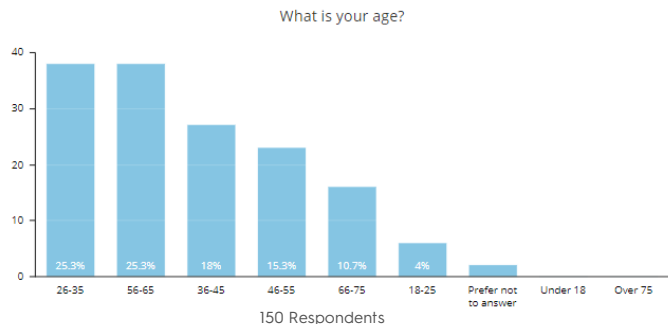
403 Respondents

What do you most often use shared use paths / multi-use trails for? (Select all that apply)

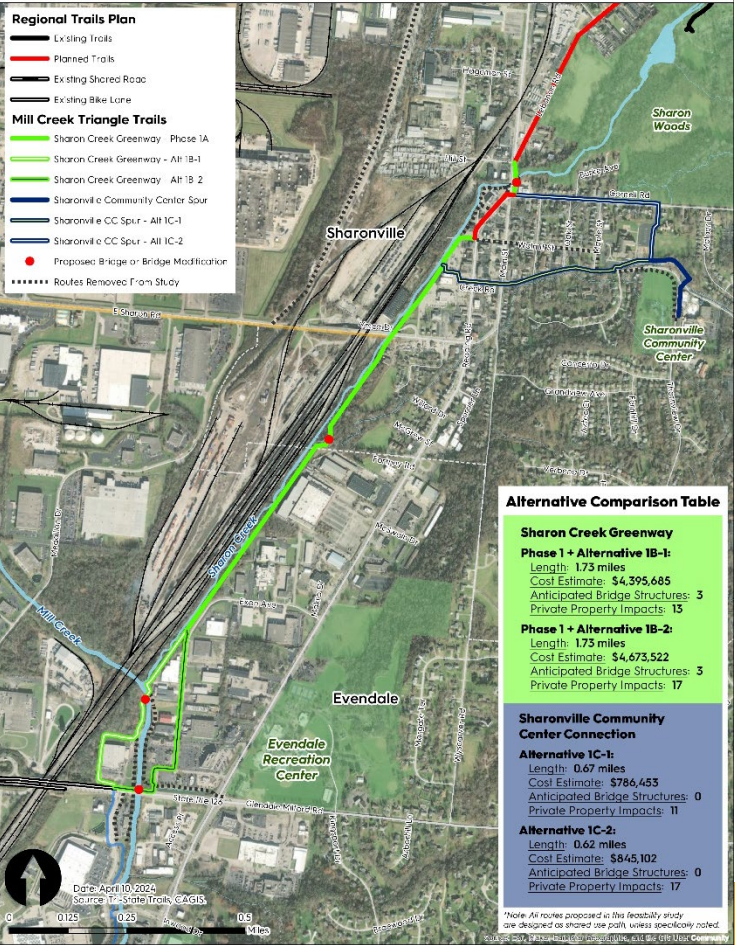
79%	Exercise	321 ✓
61%	For fun	248 ✓
35%	Getting from one place to another	144 ✓
6%	Other	23 ✓

406 Respondents

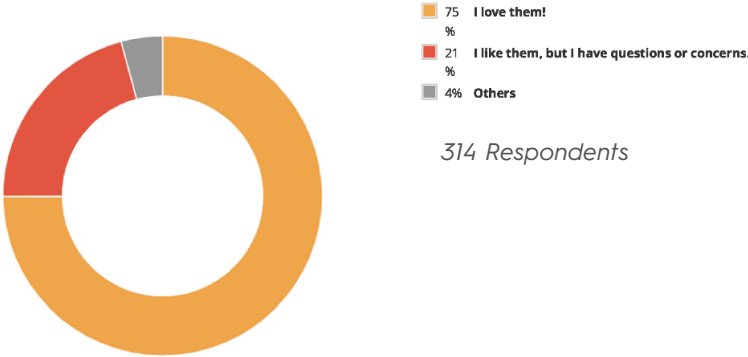
Participant Demographics



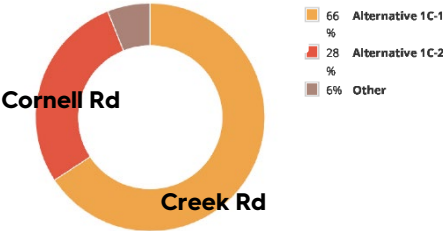
Sharon Creek Greenway Focus Area



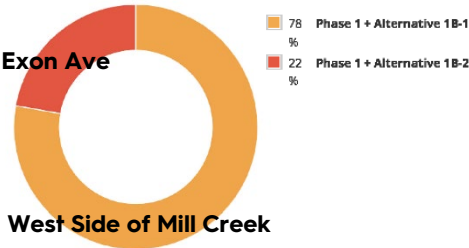
What do you think of the proposed routes in the Sharon Creek Greenway Focus Area?



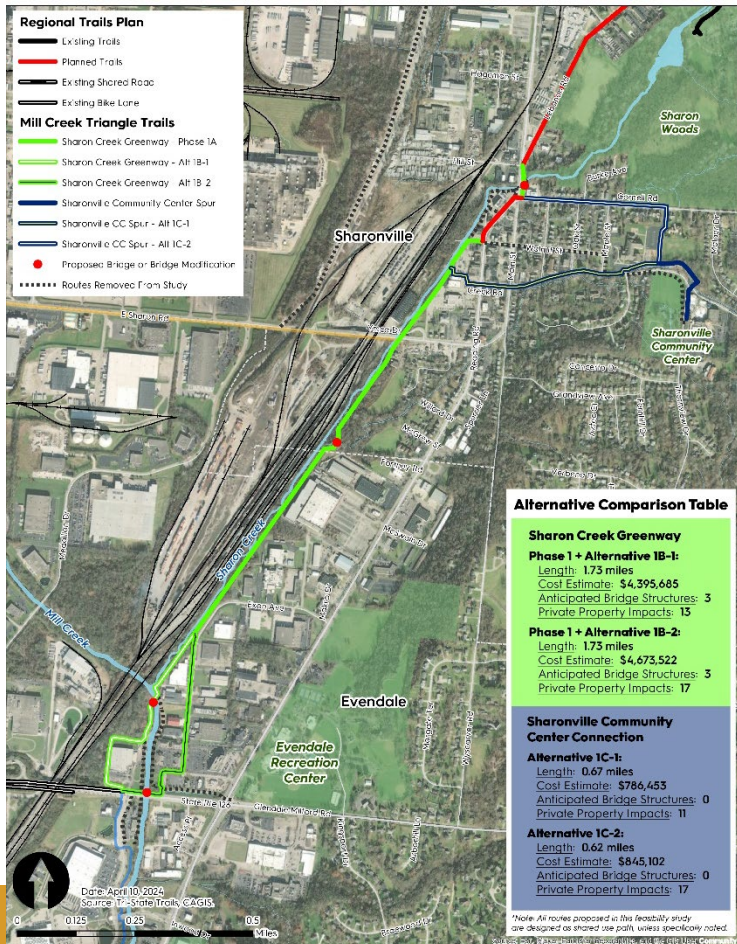
For the **Sharonville Community Center Connection**, which alternative do you prefer?



For the **Sharon Creek Greenway**, which alternative do you prefer?

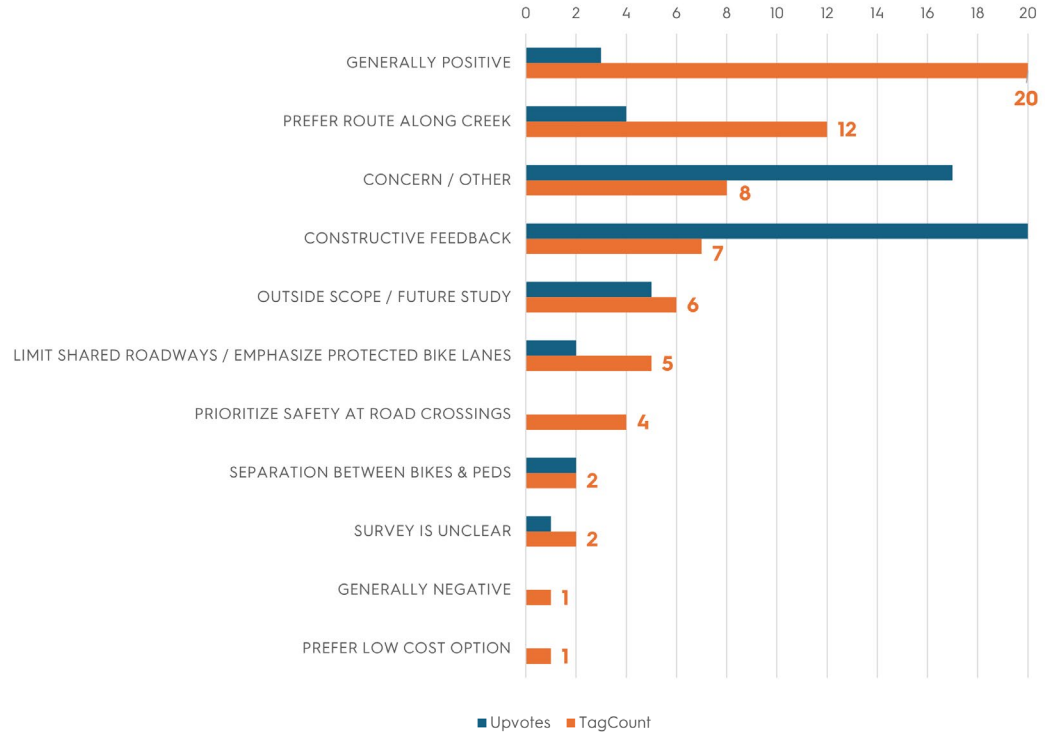


Sharon Creek Greenway Focus Area



77 Total Comments

Sharon Creek Greenway Focus Area - Comments



Sharon Creek Greenway Focus Area

KEY TAKEAWAYS

- Keep the trail along the creek
- Prioritize safe roadway crossings
 - Glendale-Milford Rd
 - Reading Rd / Main St in Sharonville
- FUTURE STUDY:
 - Convert Glendale-Milford bike lane protected bike lane
 - Alternative 1-C2 (Cornell Rd) creates an opportunity for trail loop around Sharon Woods trail system
 - Spur trails to Evendale Recreation Center / residential areas



Wins for Tri-State Trails

- Strengthen future funding prospects
- Strong feasibility study report
 - Constructive feedback from public
 - Clear preferred alternatives to pursue funding
- Demonstrated significant support for the project due to number of residents participating in VPI and voicing support



Wins for ODOT

- Reduced burden for future phases that are constructed
- Strong feasibility study to create better projects to later oversee
 - I.E. all viable alternatives identified and covered
 - PI already identified hot button issues
 - Public input already received
- Smooth transition into an LPA project managed by an ODOT PM



Lessons Learned

Not all VPIs are created equal!

- VPI (Open House) are static websites that are open 24/7 for at least 30 days
- VPI (Live Q&A) aka Zoom PI meetings, have many of the same drawbacks of in-person meetings. Very limited timeframe to try and participate.
- VPI can be low effort and still be highly effective
- It's very rare for the public to complain about not having a "presentation"



Lessons Learned

	Meeting Type	
	VPI (Open House)	In-Person*
Total Comments	398	66

*Assuming every person who attended provided a comment

Location of Participants	VPI Percentage	In-person Percentage	Change in Percentage
City of Sharonville**	5.5	9.1	-3.6
Village of Evendale	7.0	3.0	4.0
Village of Glendale	14.1	12.1	1.9
City of Wyoming	9.3	12.1	-2.8
Village of Woodlawn	2.3	0.0	2.3
City of Reading	5.0	3.0	2.0
Village of Lincoln Heights	0.8	0.0	0.8
Village of Arlington Heights	1.8	0.0	1.8
Village of Lockland	3.3	0.0	3.3
Springfield Township	3.5	1.5	2.0
City of Cincinnati	25.4	27.3	-1.9
Village of Greenhills	0.5	1.5	-1.0
Other	21.6	30.3	-8.7
Total	100	100	

**In-person meeting took place within the City of Sharonville so that may explain why the decrease in percentage

VPI (Open House) allows for better representation vs. In-person

- In-person meeting had over representation and under representation of communities.
- VPI actually reduced representation from people who lived outside of the communities impacted by the project.
- VPI allowed for more equal representation weighted by population of communities.
- VPI generates more representation of traditionally underserved communities (low income & minorities).

Lessons Learned

VPI (Open House) allows for better representation vs. In-person

- VPI allowed for more equal representation weighted by populations of communities
- VPI generates more representation of traditionally underserved communities

Location of Participants	Ideal weighted representation	VPI weighted representation	In-person weighted representation	ideal vs VPI	ideal vs in-person	Change in Percent
City of Sharonville	11.3	5.5	9.1	-5.7	-2.2	-3.6
Village of Evendale	2.6	7.0	3.0	4.4	0.4	4.0
Village of Glendale	1.9	14.1	12.1	12.1	10.2	1.9
City of Wyoming	8.6	9.3	12.1	0.7	3.6	-2.8
Village of Woodlawn	3.8	2.3	0.0	-1.6	-3.8	2.3
City of Reading	10.3	5.0	3.0	-5.3	-7.3	2.0
Village of Lincoln Heights	3.1	0.8	0.0	-2.3	-3.1	0.8
Village of Arlington Heights	1.0	1.8	0.0	0.7	-1.0	1.8
Village of Lockland	3.4	3.3	0.0	-0.2	-3.4	3.3
Springfield Township	35.0	3.5	1.5	-31.5	-33.5	2.0
City of Cincinnati*	15.4	25.4	27.3	10.0	11.9	-1.9
Village of Greenhills	3.6	0.5	1.5	-3.1	-2.1	-1.0
Other	0.0	21.6	30.3	21.6	30.3	-8.7

*Cincinnati population is based on Hartwell, Roselawn, & Carthage

VPI helps traditionally underserved communities get closer to the ideal representation when factoring in the populations of residents in all communities.



MILL CREEK TRIANGLE TRAIL

FEASIBILITY STUDY

AUGUST 2025



Lessons Learned

- What to do differently “next time”
 - Projected cost estimates
 - LTAP training – PDP
- Recommendations to other agencies / districts
 - Early coordination with ODOT if you’re planning to pursue federal grant funds



Thank you!



**Department of
Transportation**

Brad Bowers, AICP
Tri-State Trails
Project Manager
brad@tristatetrails.org

Anthony Pankala
ODOT District 8
Environmental Engineer
Anthony.Pankala@dot.ohio.gov