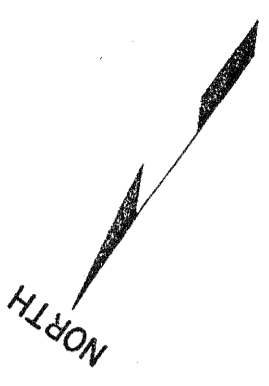


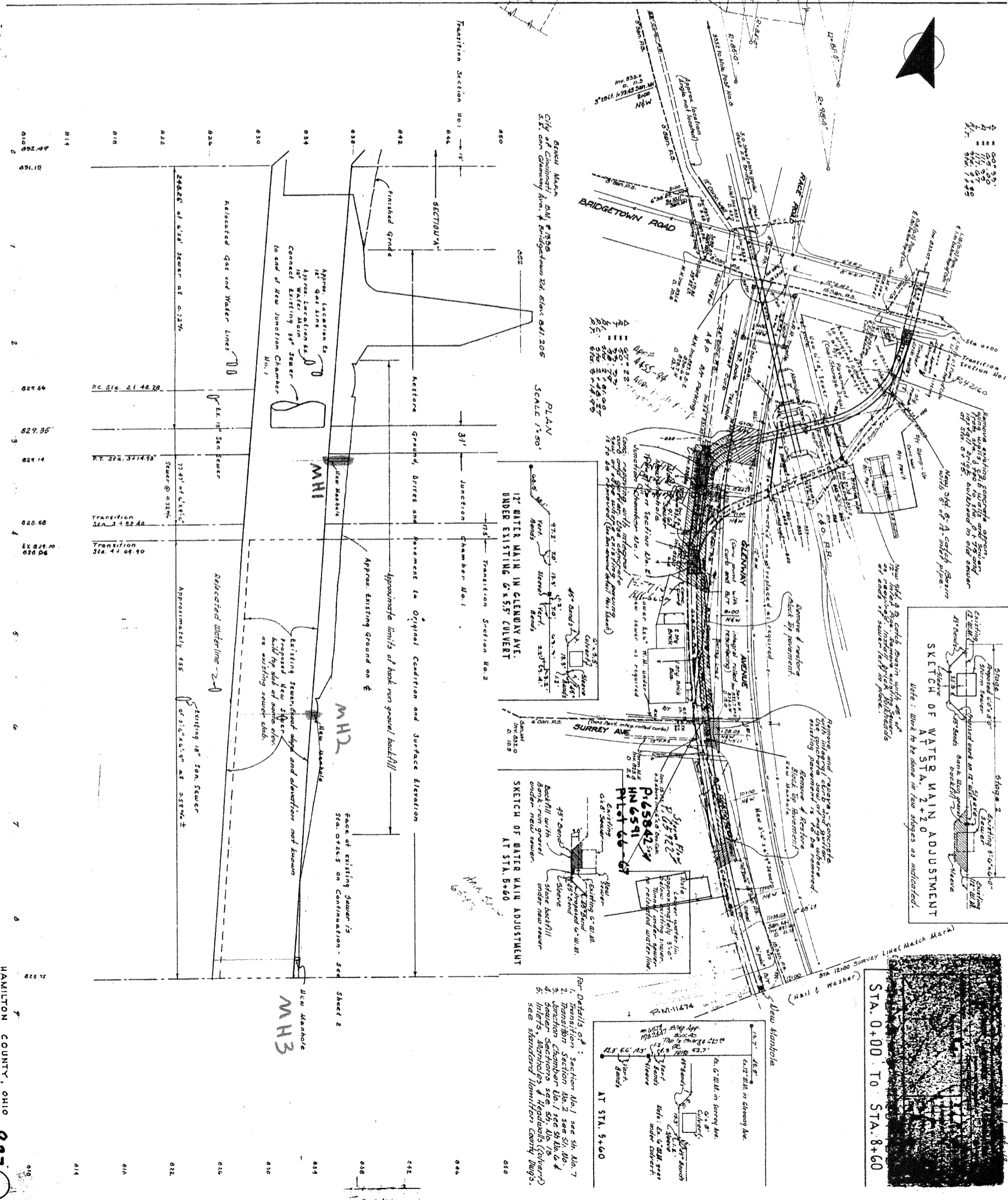
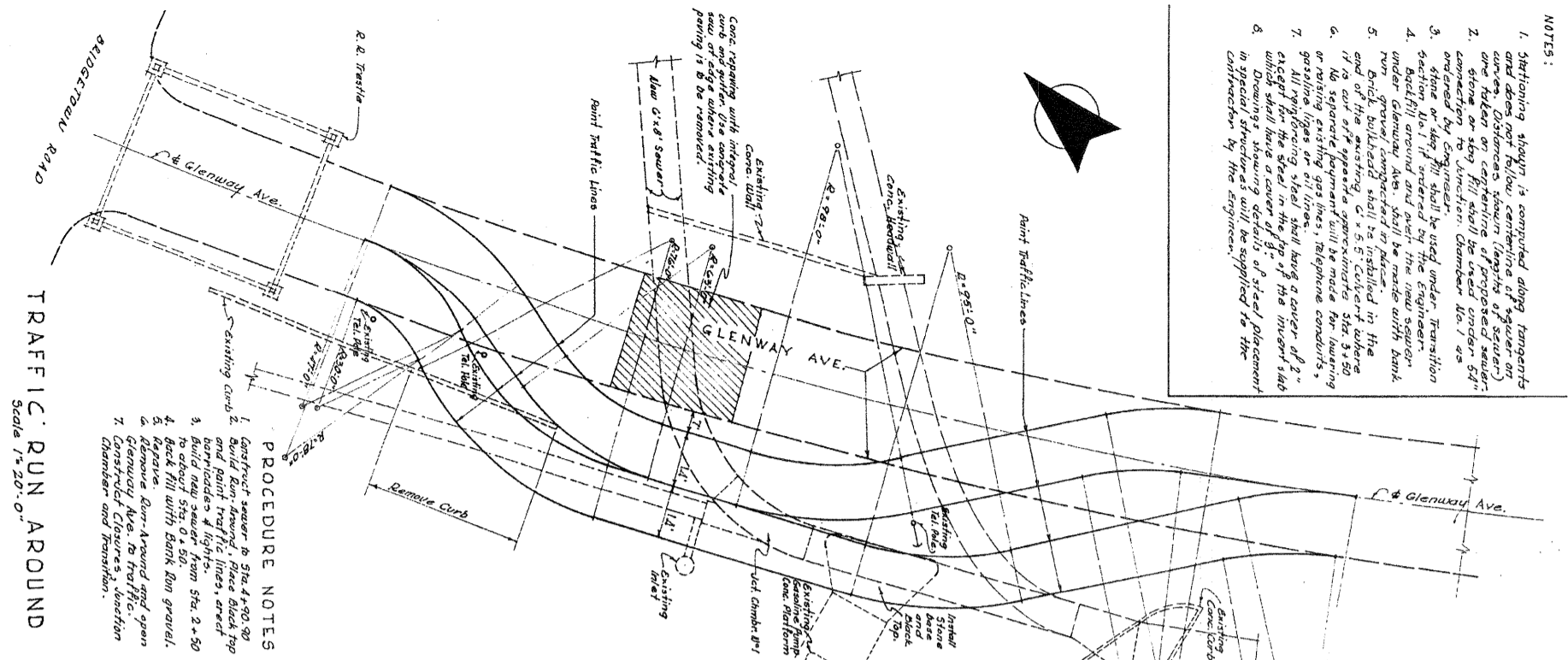
HAM-264-810



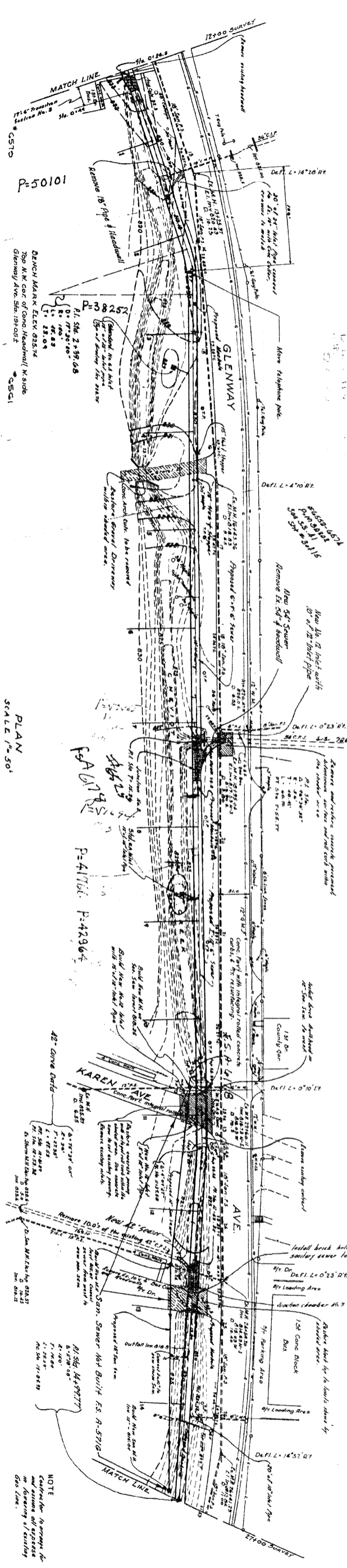
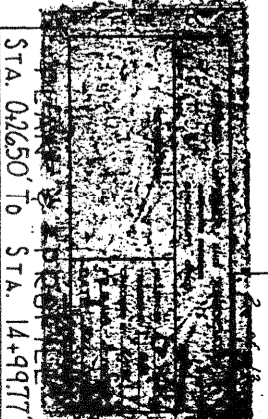
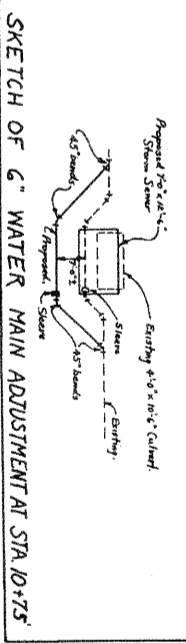
TRIBUTARY OF MUDDY CREEK  
 HAMILTON COUNTY  
 HAM-264-0810

HAM-264-8.10

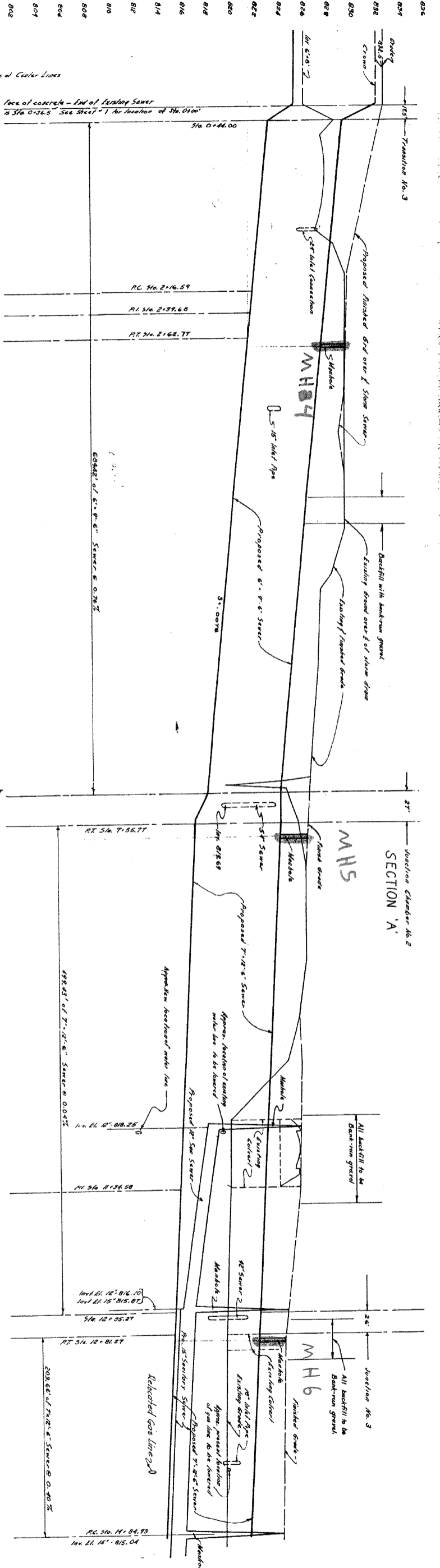
- NOTES:
1. Stationing shown is computed along tangents and does not follow centerline of sewer on curve. Distances shown (length of sewer) are taken on centerline of proposed sewer. Stone or slag fill shall be used under 6" connection to junction. Chamber No. 1 as ordered by Engineer.
  2. Stone or slag fill shall be used under Transition under Glenway Ave. shall be made with bank run gravel compacted in place.
  3. Brick bulhead shall be installed in the end of the existing 6" x 5.5" Culvert where it is cut off approximately Sta. 3+50 or raising existing gas lines, telephone conduits, or raising types of structure having a cover of 2' or less. The steel in the top of the manhole shall be set in a cover of 2'.
  4. Drawings showing details of steel placement in special structures will be supplied to the contractor by the Engineer.



- NOTES**
- All details shown from P.L. to R.L. and existing sewer lines of structure to sewer as shown. Contractor shall be held responsible for correct location of sewer lines. See drawings for details of sewer lines and sewer lines of the proposed sewer.
  - From Details of:
    - Transition Section No. 3 see 54 Blk. B.
    - Transition Chamber No. 2 see 54 Blk. C & 10 p.
    - Transition Chamber No. 3 see 54 Blk. C & 10 p.
    - Transition Chamber No. 4 see 54 Blk. C & 10 p.
    - Transition Chamber No. 5 see 54 Blk. C & 10 p.
    - Transition Chamber No. 6 see 54 Blk. C & 10 p.
    - Transition Chamber No. 7 see 54 Blk. C & 10 p.
    - Transition Chamber No. 8 see 54 Blk. C & 10 p.
    - Transition Chamber No. 9 see 54 Blk. C & 10 p.
    - Transition Chamber No. 10 see 54 Blk. C & 10 p.
    - Transition Chamber No. 11 see 54 Blk. C & 10 p.
    - Transition Chamber No. 12 see 54 Blk. C & 10 p.
    - Transition Chamber No. 13 see 54 Blk. C & 10 p.
    - Transition Chamber No. 14 see 54 Blk. C & 10 p.
    - Transition Chamber No. 15 see 54 Blk. C & 10 p.
    - Transition Chamber No. 16 see 54 Blk. C & 10 p.
    - Transition Chamber No. 17 see 54 Blk. C & 10 p.
    - Transition Chamber No. 18 see 54 Blk. C & 10 p.
    - Transition Chamber No. 19 see 54 Blk. C & 10 p.
    - Transition Chamber No. 20 see 54 Blk. C & 10 p.

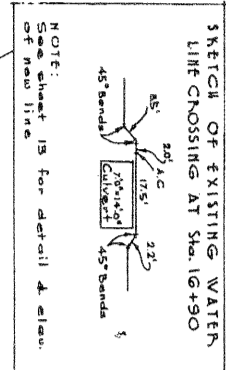


PLAN  
SCALE 1"=50'

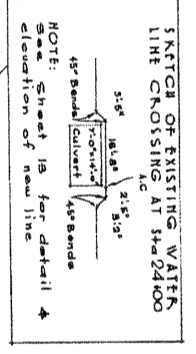


836	837	838	839	840	841	842	843	844	845	846	847	848	849	850	851	852	853	854	855	856	857	858	859	860	861	862	863	864	865	866	867	868	869	870	871	872	873	874	875	876	877	878	879	880	881	882	883	884	885	886	887	888	889	890	891	892	893	894	895	896	897	898	899	900	901	902	903	904	905	906	907	908	909	910	911	912	913	914	915	916	917	918	919	920	921	922	923	924	925	926	927	928	929	930	931	932	933	934	935	936	937	938	939	940	941	942	943	944	945	946	947	948	949	950	951	952	953	954	955	956	957	958	959	960	961	962	963	964	965	966	967	968	969	970	971	972	973	974	975	976	977	978	979	980	981	982	983	984	985	986	987	988	989	990	991	992	993	994	995	996	997	998	999	1000
-----	-----	-----	-----	-----	-----	-----	-----	-----	-----	-----	-----	-----	-----	-----	-----	-----	-----	-----	-----	-----	-----	-----	-----	-----	-----	-----	-----	-----	-----	-----	-----	-----	-----	-----	-----	-----	-----	-----	-----	-----	-----	-----	-----	-----	-----	-----	-----	-----	-----	-----	-----	-----	-----	-----	-----	-----	-----	-----	-----	-----	-----	-----	-----	-----	-----	-----	-----	-----	-----	-----	-----	-----	-----	-----	-----	-----	-----	-----	-----	-----	-----	-----	-----	-----	-----	-----	-----	-----	-----	-----	-----	-----	-----	-----	-----	-----	-----	-----	-----	-----	-----	-----	-----	-----	-----	-----	-----	-----	-----	-----	-----	-----	-----	-----	-----	-----	-----	-----	-----	-----	-----	-----	-----	-----	-----	-----	-----	-----	-----	-----	-----	-----	-----	-----	-----	-----	-----	-----	-----	-----	-----	-----	-----	-----	-----	-----	-----	-----	-----	-----	-----	-----	-----	-----	-----	-----	-----	-----	-----	-----	-----	-----	-----	------

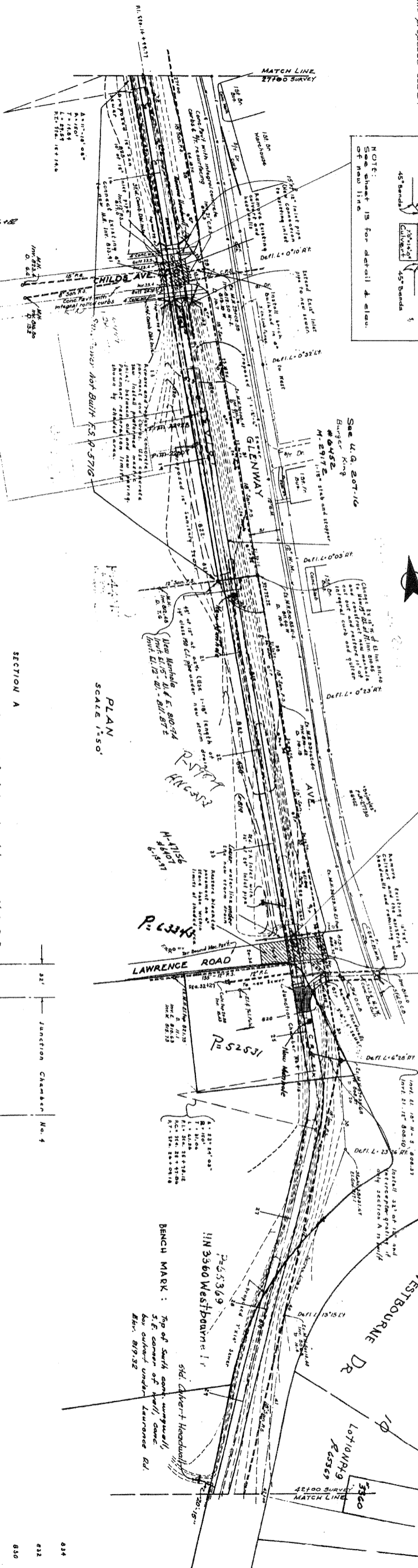
- 1. For details of Junction Chamber No. 4
- 2. See sheets 149 & 148
- 3. For details of manhole construction
- 4. See 5th Ed. of details of manholes & manhole structures
- 5. For details of details of manholes & manhole structures
- 6. For details of details of manholes & manhole structures
- 7. For details of details of manholes & manhole structures
- 8. For details of details of manholes & manhole structures
- 9. For details of details of manholes & manhole structures
- 10. For details of details of manholes & manhole structures



NOTE:  
See sheet 15 for detail & elev.  
of new line



NOTE:  
See sheet 15 for detail & elevation of new line

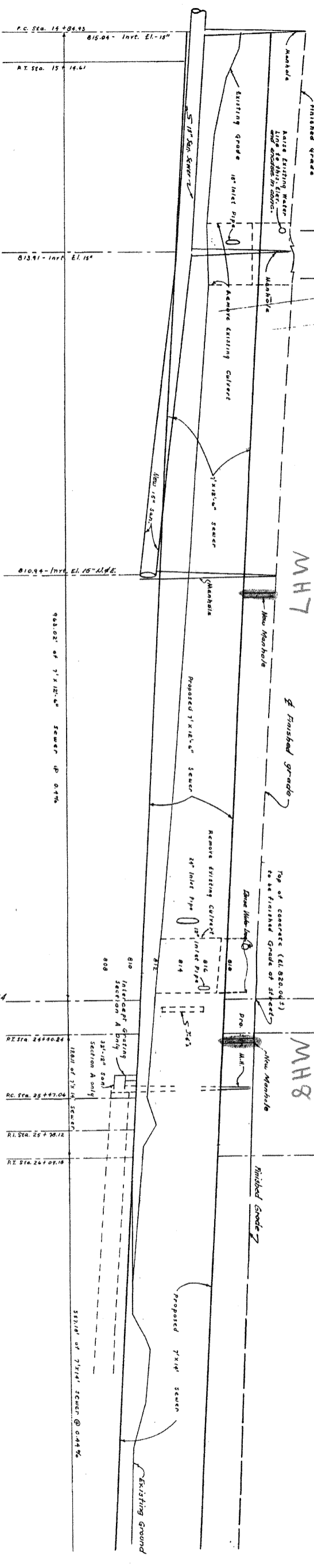


PLAN  
SCALE 1"=50'

SECTION A

See contours and finished grade sections on Sht. 24+3  
for construction and fill from Sta. 0+26.5 to  
Sta. 24+00. Borrow fill to be used where required  
to fill to elevations indicated or as directed.

See typical section on sheet 149 backfill and grading  
from Sta. 24+00 to Sta. 48+00.



89.64	15	16	17	18	19	20	21	22	23	24	25	26	27	28	29	30	31	32	33	34	35	36	37	38	39	40	41	42	43	44	45	46	47	48	49	50	51	52	53	54	55	56	57	58	59	60	61	62	63	64	65	66	67	68	69	70	71	72	73	74	75	76	77	78	79	80	81	82	83	84	85	86	87	88	89	90	91	92	93	94	95	96	97	98	99	100
-------	----	----	----	----	----	----	----	----	----	----	----	----	----	----	----	----	----	----	----	----	----	----	----	----	----	----	----	----	----	----	----	----	----	----	----	----	----	----	----	----	----	----	----	----	----	----	----	----	----	----	----	----	----	----	----	----	----	----	----	----	----	----	----	----	----	----	----	----	----	----	----	----	----	----	----	----	----	----	----	----	----	----	----	----	----	-----

FRONDORF RD.

BRIDGETOWN ROAD INTERSECTION

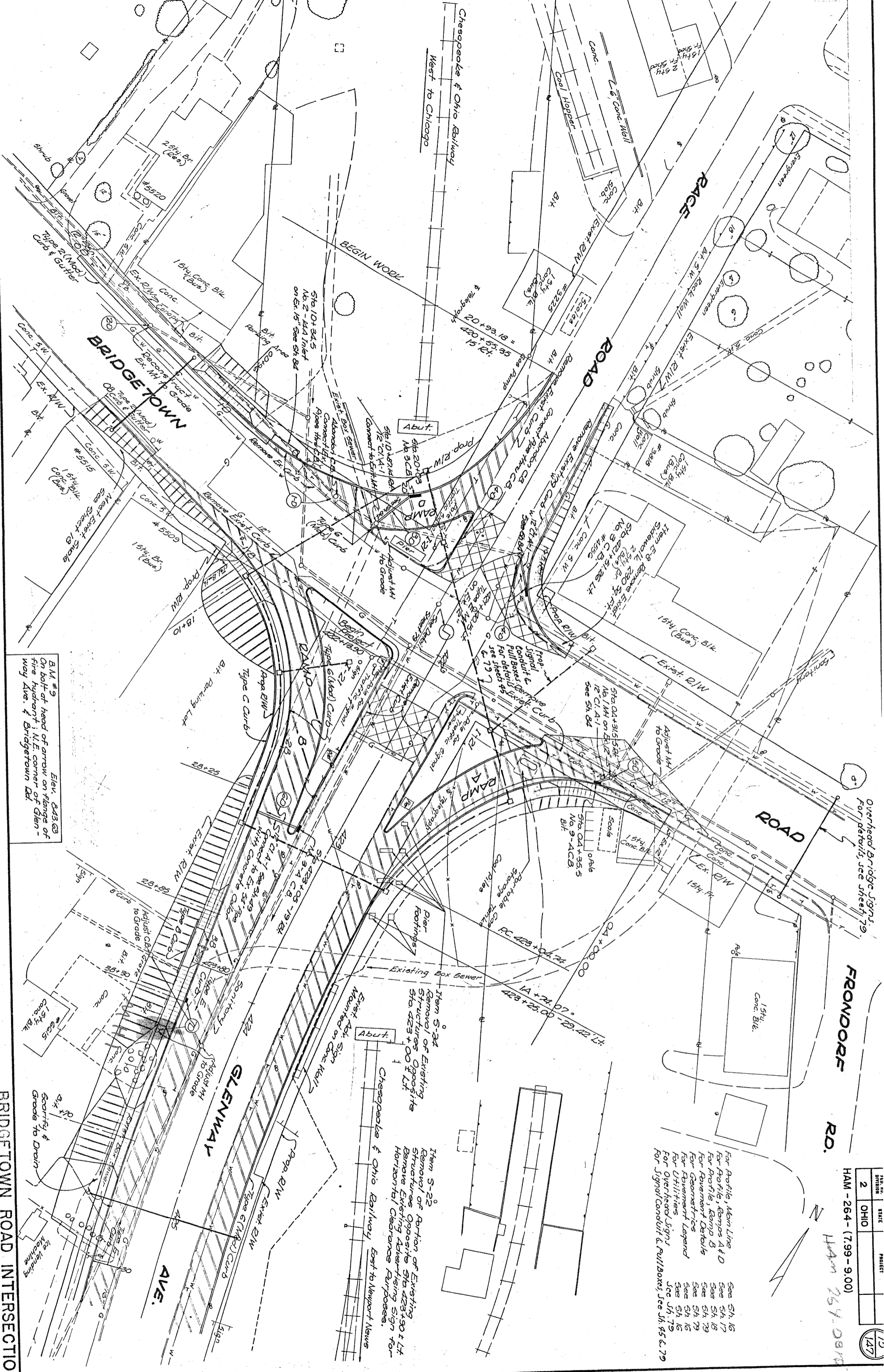
Overhead Bridge Signs.  
 For details, see sheet 79.

For Profile, Main Line See 54.16  
 For Profile, Ramps A & D See 54.17  
 For Profile, Ramp B See 54.18  
 For Rerement Details See 54.19  
 For Geometrics See 54.15  
 For Utilities See 54.16  
 For Overhead Signs See 54.17  
 For Signal Conduit & Pull Boxes, See 54.15 & 79

Item S-22  
 Removal of Portion of Existing Structures Opposite 5th 423+90 & Lt. Remove Existing Advertising Sign for Horizontal Clearance Purposes.

Item S-24  
 Removal of Existing Structures Opposite 5th 423+00 & Lt.

Chesapeake & Ohio Railway East to Newport News



B.M. #9  
 On bolt at head of arrow on flange of fire hydrant; N.E. corner of Glenway Ave. & Bridgetown Rd.  
 Elev. 843.83

WITNESS

GLENWAY AVE.

PI #2

CURVE DATA

P1 = 676.425 + 26.60  
 Δ = 25° 54' 11" LT  
 D = 6° 00' 00"  
 P = 954.93'  
 L1 = 0'  
 L2 = 150.00'  
 L3 = 4° 30' 00"  
 L4 = 221.86'  
 L5 = 292.57'  
 L6 = 356.72'

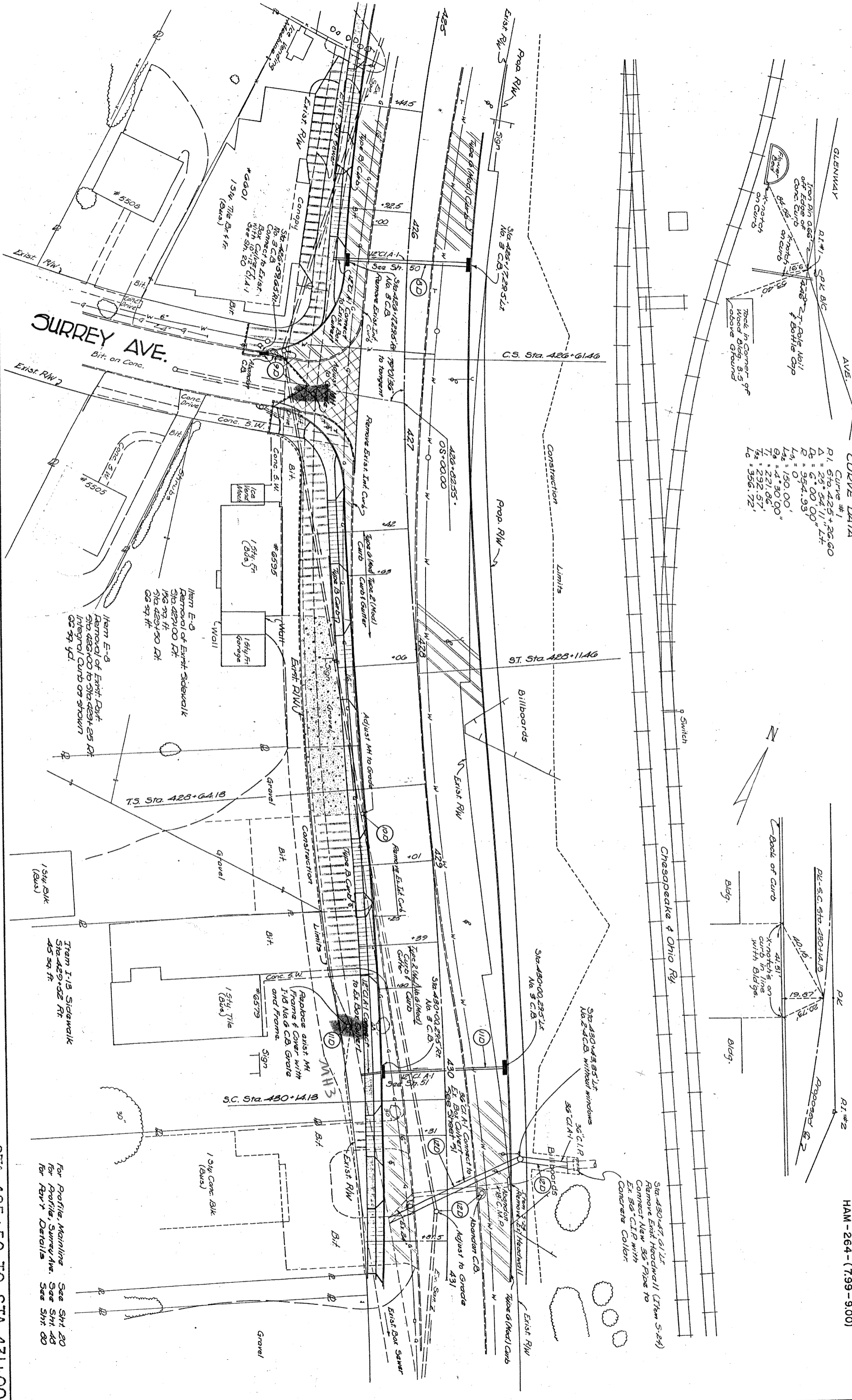
WITNESS

Chesapeake & Ohio Ry

PI #2

HAM - 264 - (7.99 - 9.00)

FED. RD. DIVISION	STATE	PROJECT
2	OHIO	



**SURREY AVE.**  
Bit. on Conc.

T.S. Sta. 428+64.13

S.C. Sta. 430+14.13

For Profile, Mainline  
See Sht. 20  
For Profile, Surrey Ave.  
See Sht. 48  
For Rev. Details  
See Sht. 80

Sta. 430+47.61 LT  
Remove Exist. Hoodwall (Item 5-24)  
Connect New 36" Pipe to  
Ex. 36" CIP with  
Concrete Collar

Item E-8  
Removal of Exist. Sidewalk  
Sta. 428+00 RT  
158 sq. ft.  
Sta. 429+50 LH  
88 sq. ft.

Item I-15  
Sidewalk  
Sta. 429+52 RT  
45 sq. ft.

Replace exist. MH  
Frame & Cover with  
1 1/8 Na. 6 C.B. Grate  
and Frame.

Adjust to Grade  
431

Sta. 430+00.295 LT  
No. 5 C.B.

36" C.I.P.  
36" C.I.A.1

Back of Curb

41.81'

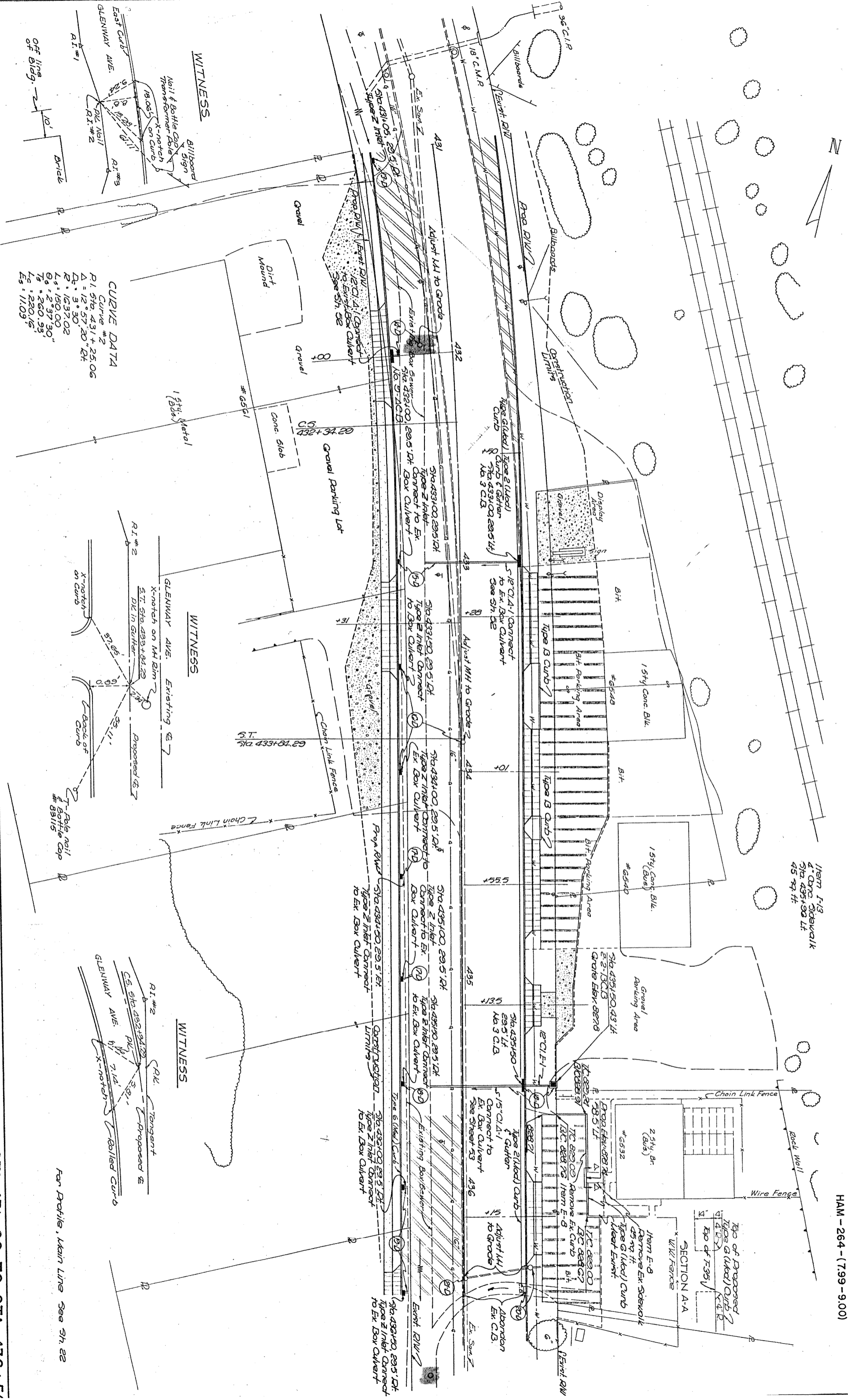
41.81'

41.81'

41.81'

41.81'

41.81'



**CURVE DATA**  
 Curve #2  
 P.I. Sta. 431 + 25.06  
 Δ = 12° 57' 30" R4  
 R = 1637.02  
 L = 150.00  
 Δ = 2° 37' 30"  
 T = 260.95'  
 L = 230.16'  
 E = 11.09'

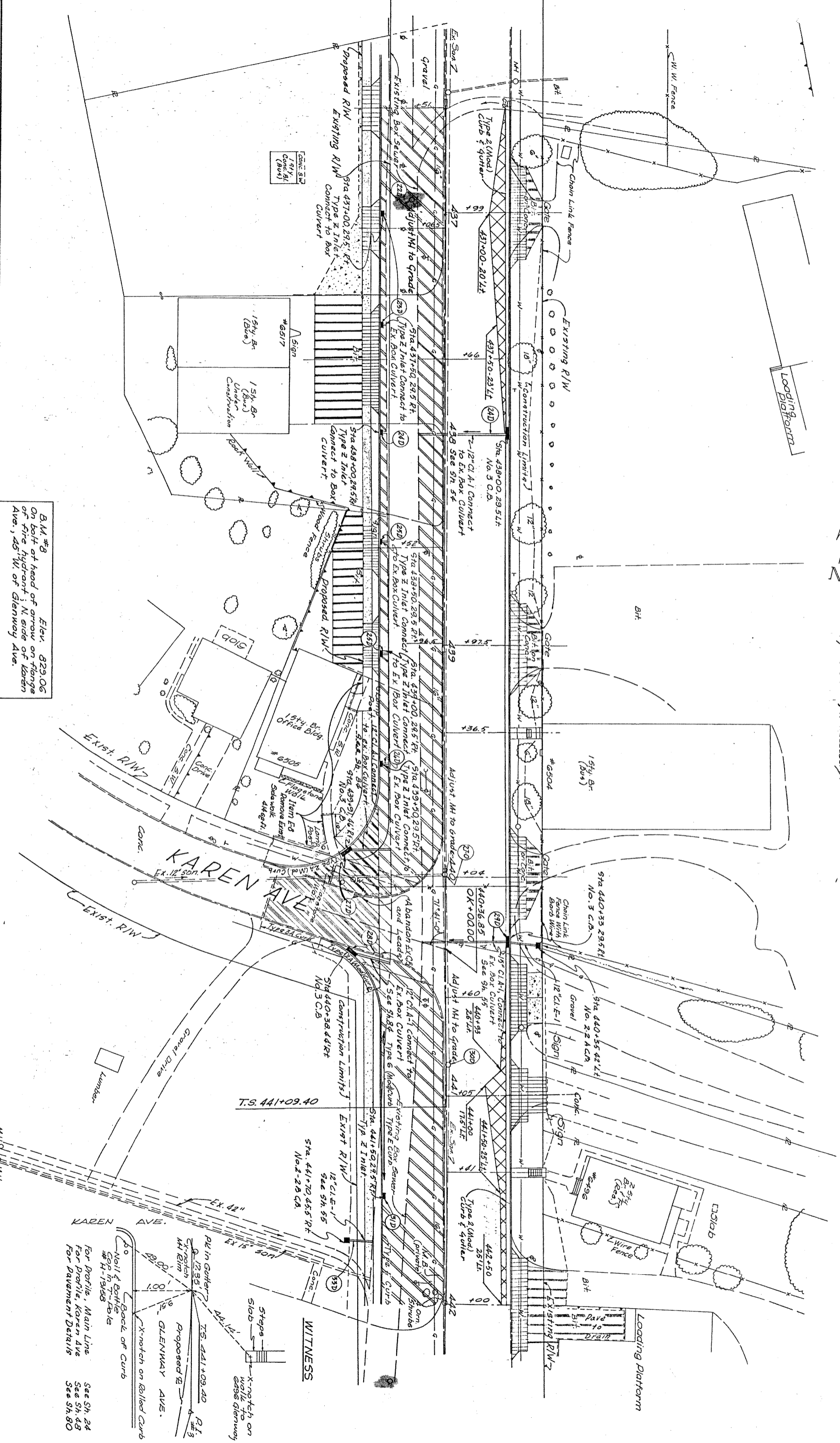
**Witness**  
 Witness Point #1  
 Witness Point #2  
 Witness Point #3

**Witness**  
 Witness Point #1  
 Witness Point #2  
 Witness Point #3

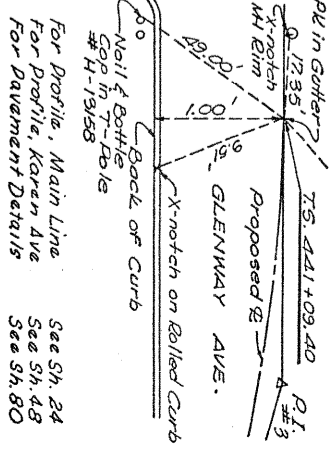
For Profile, Main Line See Sh. 22

Station	Width	Risers	Treads	Lin. Ft.	Sq. Ft.	See Sh.
439+36.5 Lt	5'	2 @ 8"	2 @ 12"	10	47	54
441+41 Lt	4'	6 @ 7 1/2"	6 @ 12"	24	30	55

Note: Drives at Sta. 436+99, 438+975, and 440+04 Lt. shall be finished as shown on this sheet. Existing drive pavement beyond Sta. 0+075 of each drive shall be salvaged to the extent shown for re-surfacing. The existing fence shall be removed by the owner, if necessary.

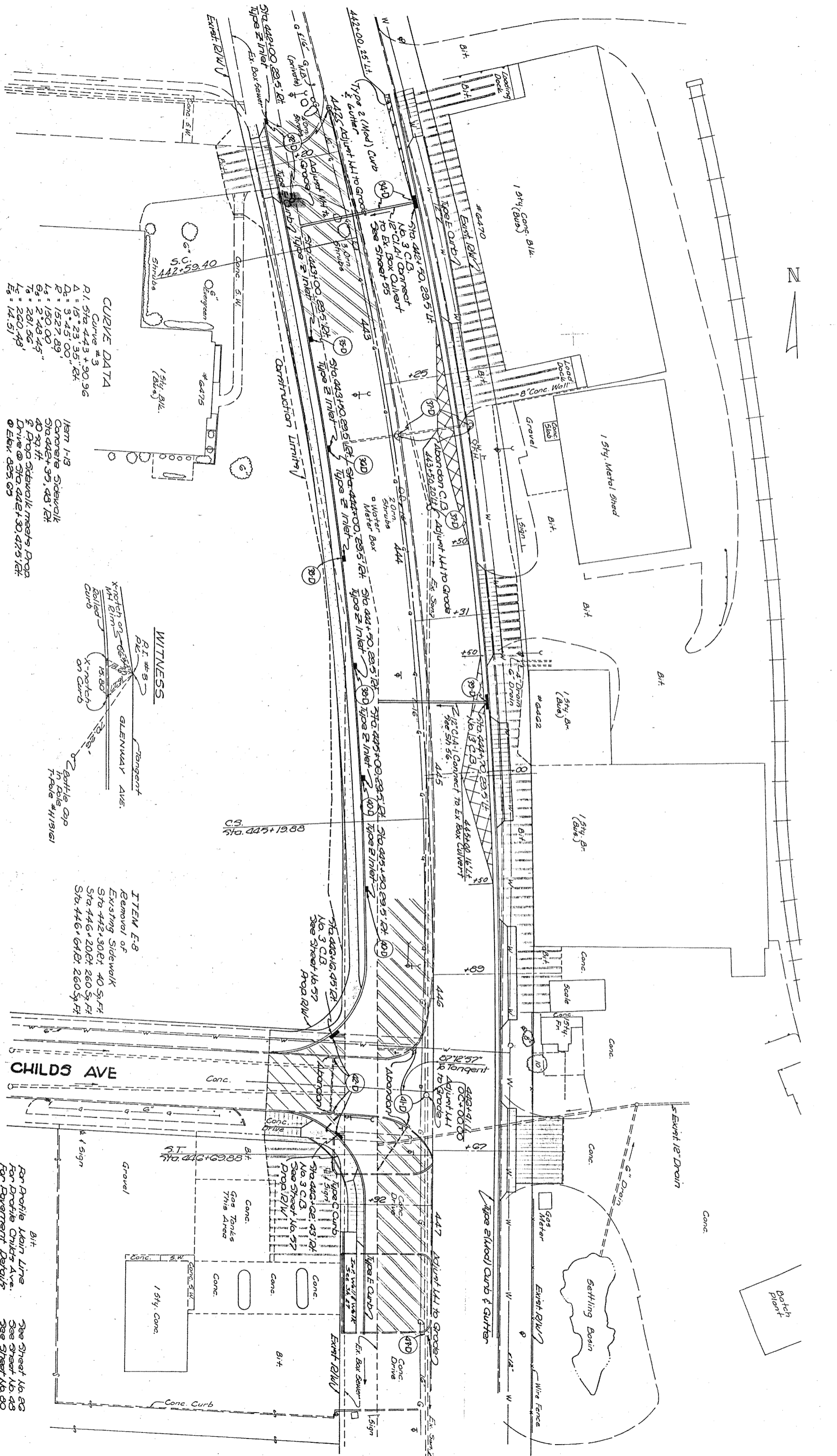


B.M. #3  
On bolt of head of arrow on flange of fire hydrant; N. side of Karen Ave., 45' W. of Glenway Ave.  
Elev. 823.06



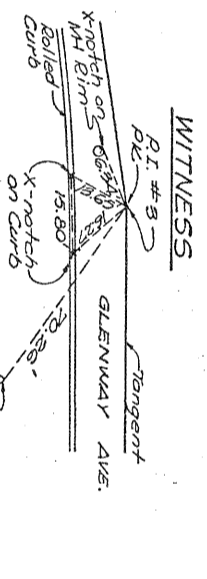
FED. NO.	STATE	PROJECT
2	OHIO	HAM-264-(7.99-9.00)





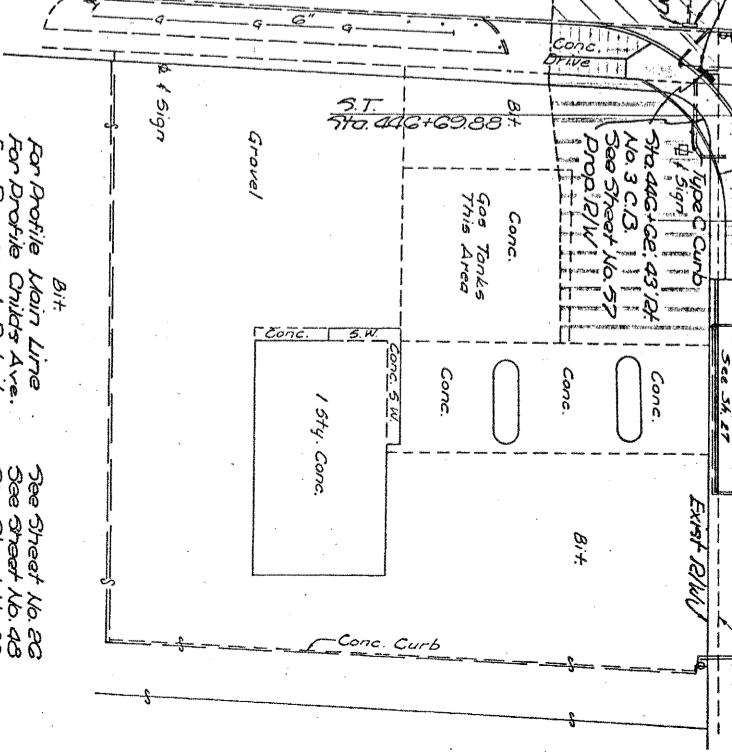
**CURVE DATA**  
 Curve #3  
 R.1. Sta. 443 + 90.96  
 Δ = 15° 23' 35" 24"  
 P = 3' 45" 00"  
 R = 1527.89'  
 L<sub>s</sub> = 150.00'  
 G<sub>s</sub> = 2' 43' 45"  
 T<sub>s</sub> = 281.56'  
 L<sub>c</sub> = 260.48'  
 E<sub>s</sub> = 14.51'

Item I-13  
 Concrete Sidewalk  
 Sta. 442 + 35.48' to 442 + 37.48' 12"  
 40 sq. ft.  
 2" Prop. Sidewalk meets Prop. Drive @ Sta. 442 + 30.475' 12"  
 @ Elev. 225.65



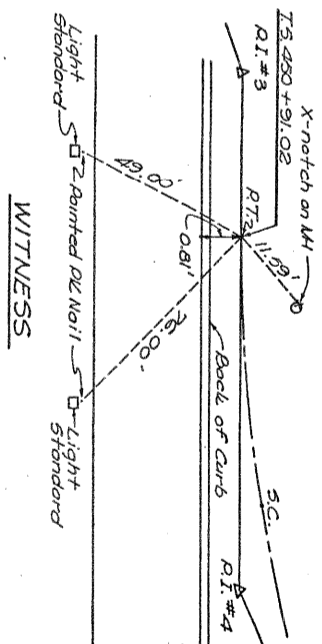
**ITEM E-8**  
 Removal of Existing Sidewalk  
 Sta. 442 + 30.61' to 40 sq. ft.  
 Sta. 446 + 20.61' to 260 sq. ft.  
 Sta. 446 + 61.61' to 260 sq. ft.

**CHILDS AVE**



For Profile Main Line  
 For Profile Childs Ave.  
 For Pavement Details  
 See Sheet No. 23  
 See Sheet No. 43  
 See Sheet No. 40

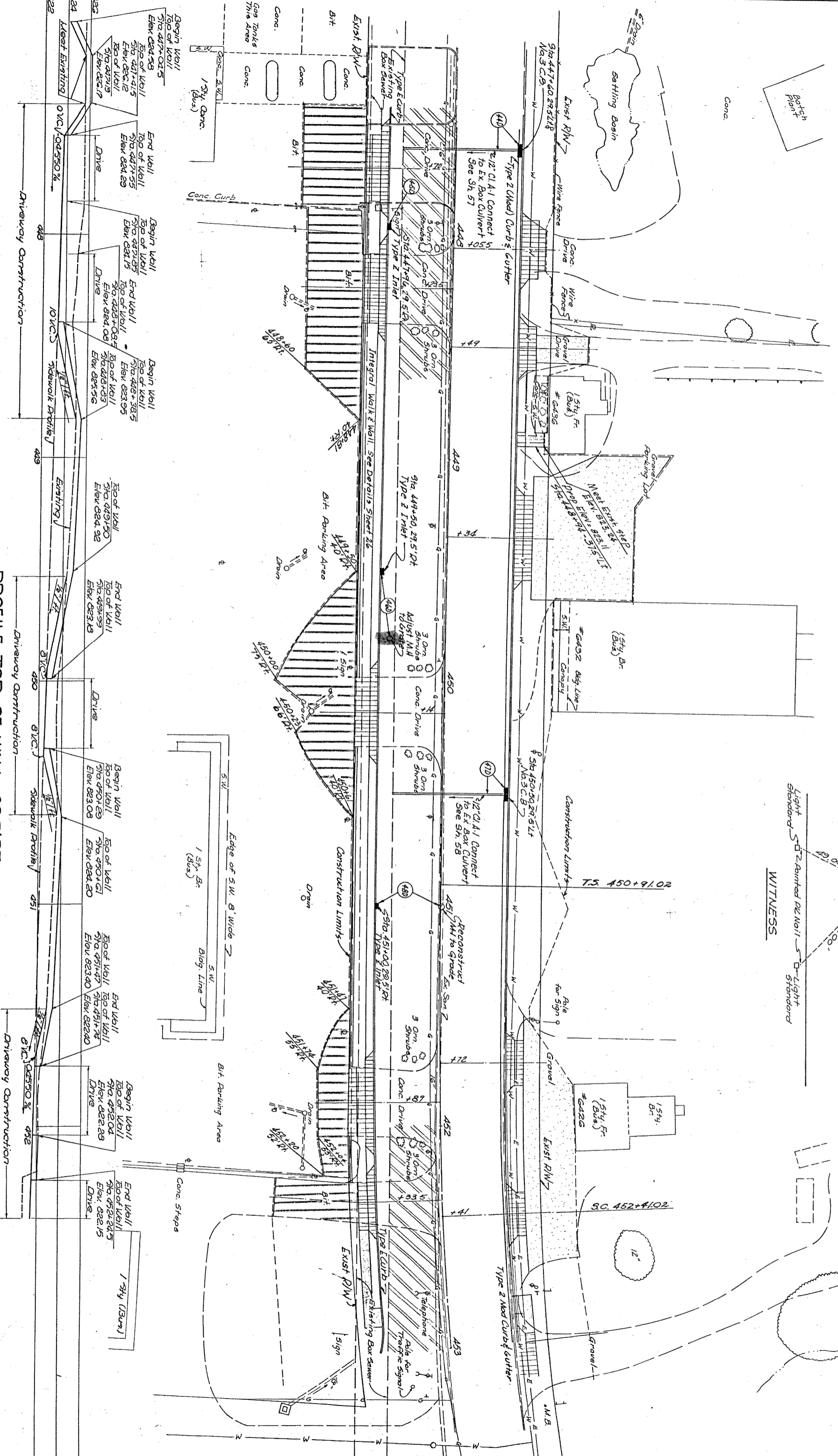
Item J-13 Concrete Sidewalk  
Sta 448+59 to Sta 448+94 LT.  
188 98 FT.



WITNESS

FEED. NO.	STATE	PROJECT
2	OHIO	

HAM - 264 - (7.99 - 9.00)



PROFILE-TOP OF WALL, 39.5 RT.

Note: Dowels shall be 1/2" diameter bars placed 12" center to center. Cost of furnishing and placing dowels shall be included in the unit price bid per linear ft. of Type C Curb. Expansion Joint Material shall be Sec. 110.02 and shall be included in the unit price bid for Item 113, 4" Concrete Sidewalk See 5h, 59 for Section.

MICROFILMED  
SEP 26 1985

**DETAIL**  
**PROPOSED GUARD RAIL**

Front Edge of Sidewalk is 33.5' L. of Prop. E

Item 1-15  
Guard Rail, Steel Beam (Deep)  
25 Lin. Ft. See Detail this sheet.

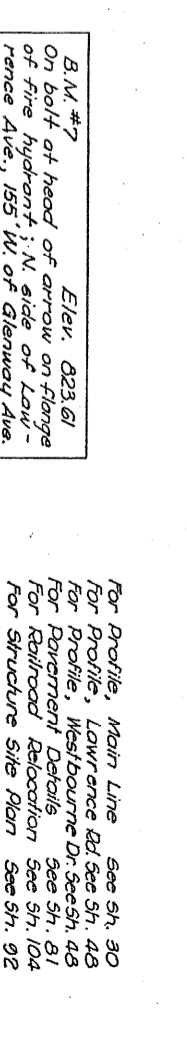
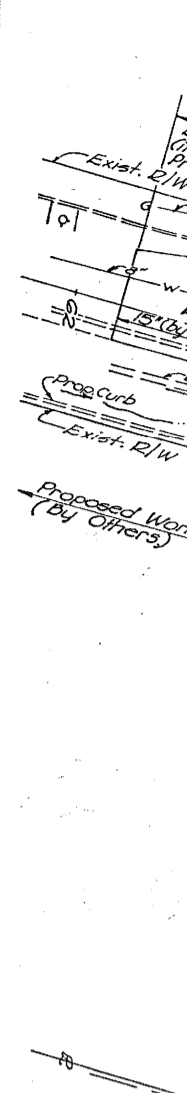
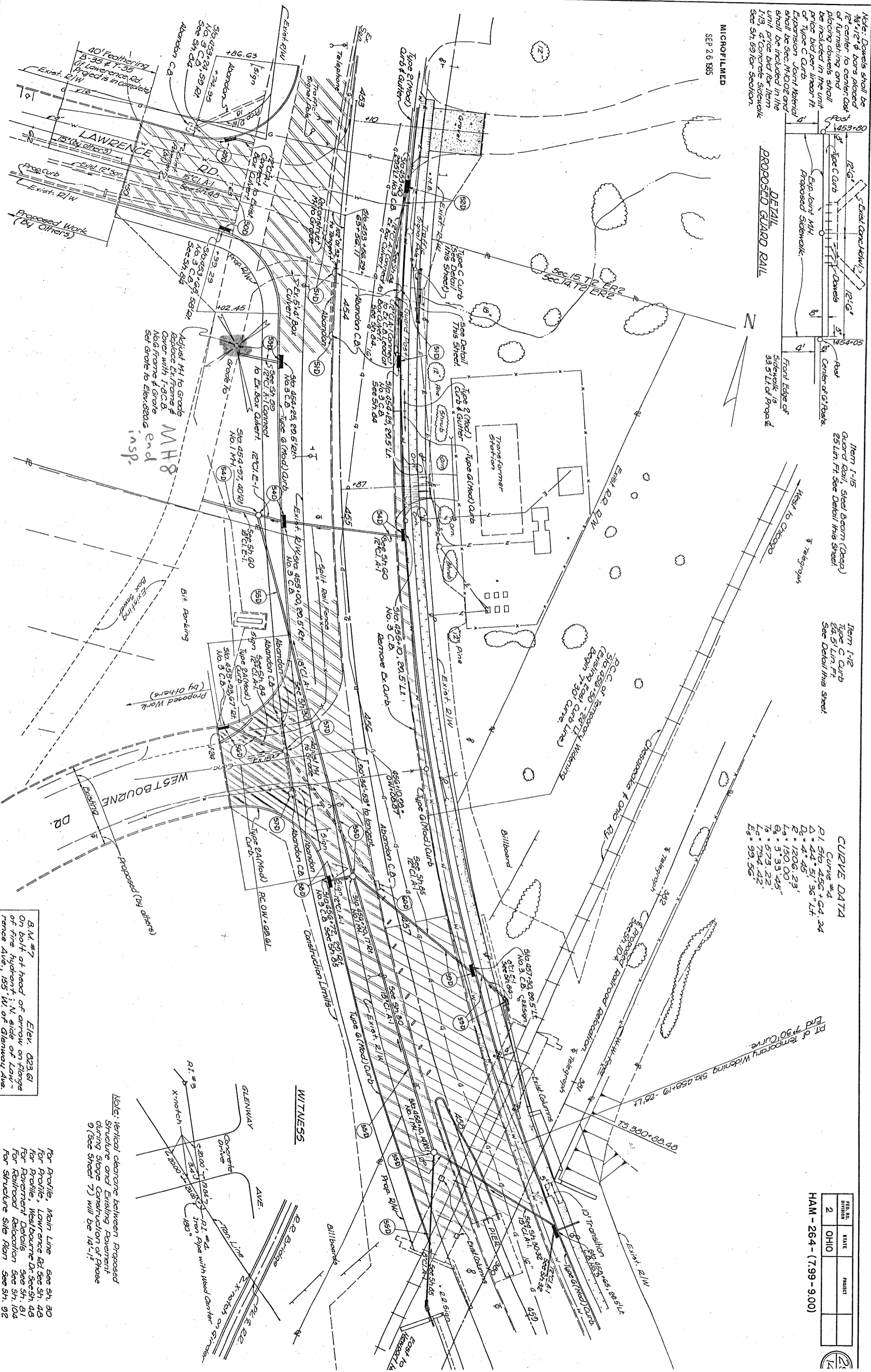
Item 1-12  
Type C Curb  
24.5' Lin. Ft.  
See Detail this sheet.

**CURVE DATA**  
Curve #4  
P1. STA. 456+00, 24.24  
Δ = 44° 51' 36" Lt.  
D = 4.45'  
R = 1206.23'  
L = 130.00'  
Q = 3' 33.45"  
T = 573.22'  
Lc = 794.42'  
Eg = 99.56'

P1 of Temporary Widening Sta. 458+19.28 Lt.  
End 7+30 Curve

FED. RD. DIVISION	STATE	PROJECT
2	OHIO	

HAM - 264 - (7.99 - 9.00)



Note: Vertical clearance between Proposed Structure and Existing Pavement during Stage Construction of Phase 9 (See Sheet 7) will be 14'-11"

For Profile, Main Line See 5h, 30  
For Profile, Lawrence Rd. See 5h, 43  
For Profile, Westbourne Dr. See 5h, 45  
For Pavement Details See 5h, 81  
For Railroad Relocation See 5h, 104  
For Structure Site Plan See 5h, 92

B.N.#7  
On half of head of arrow on flange of fire hydrant; N. side of Lawrence Ave., 155 W. of Glenway Ave.  
Elev. 823.61