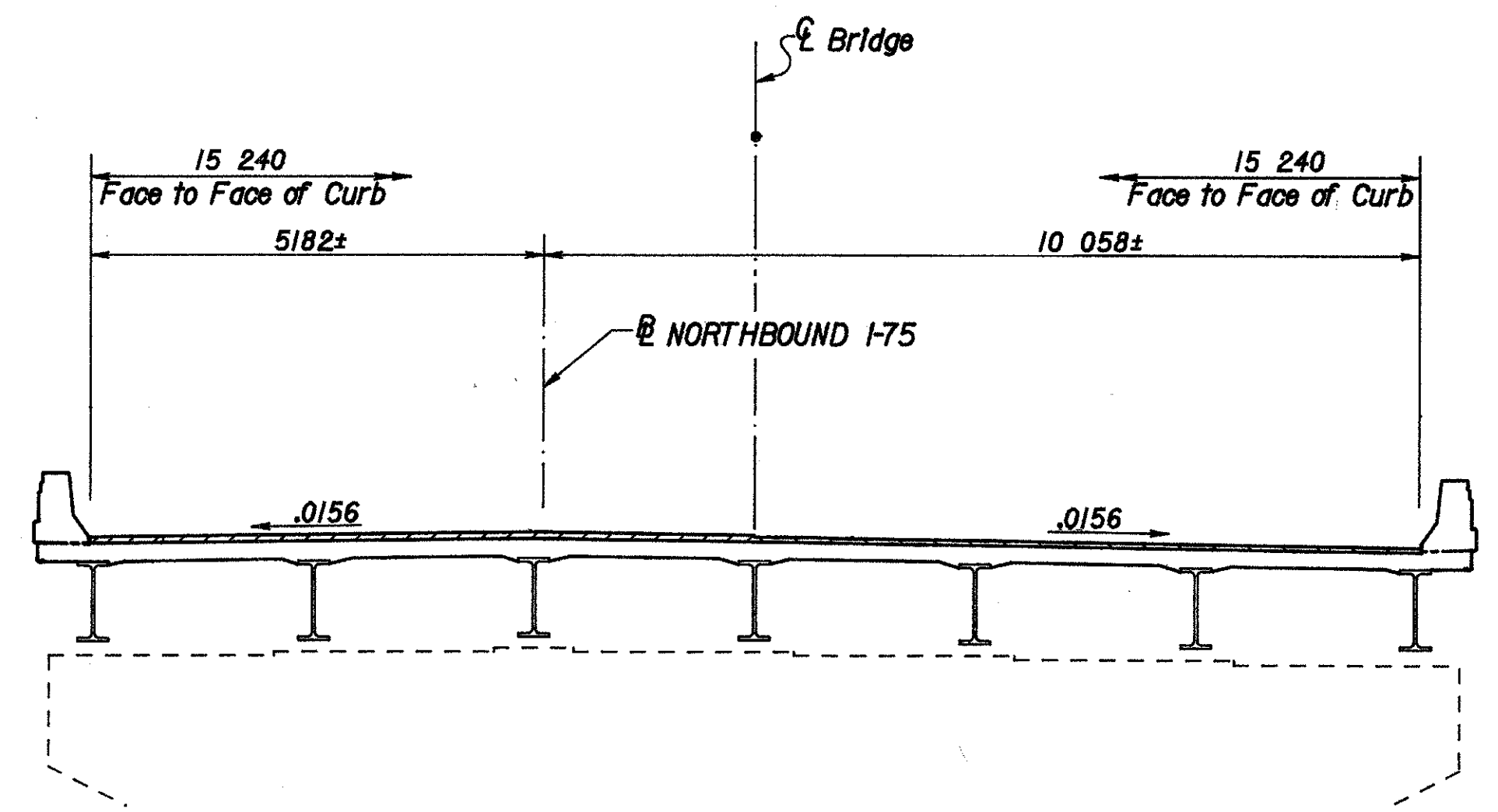


GENERAL PLAN

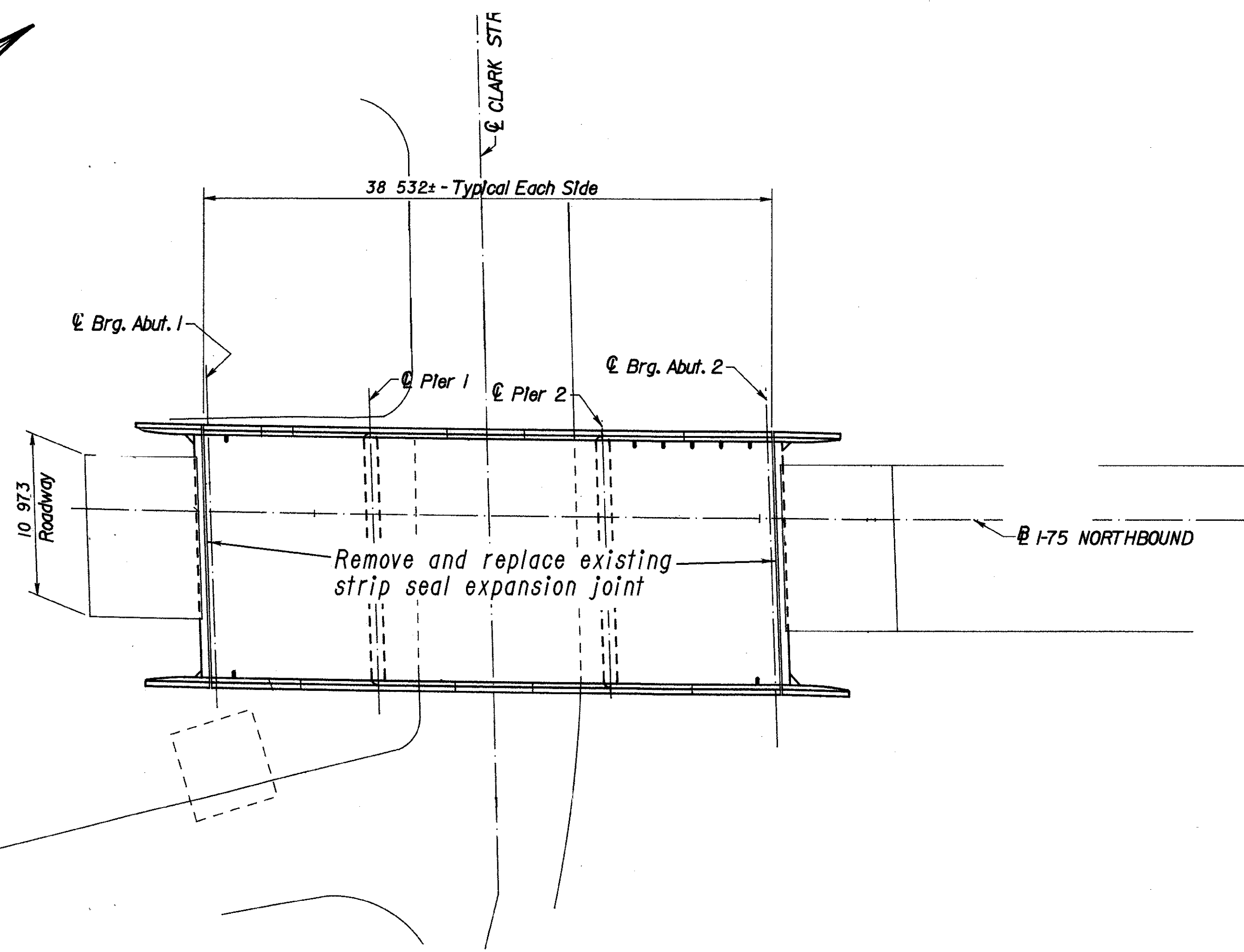
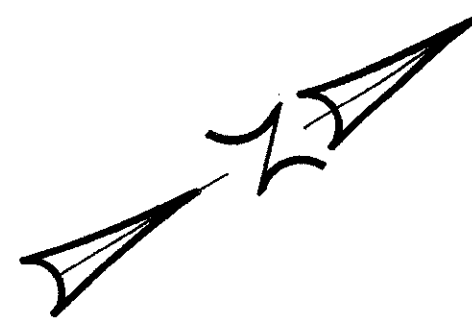
PROPOSED WORK:

1. Remove and replace existing strip seal expansion joint at Rear and Forward Abutment.
2. Refurbish existing pin and link hinge assembly.

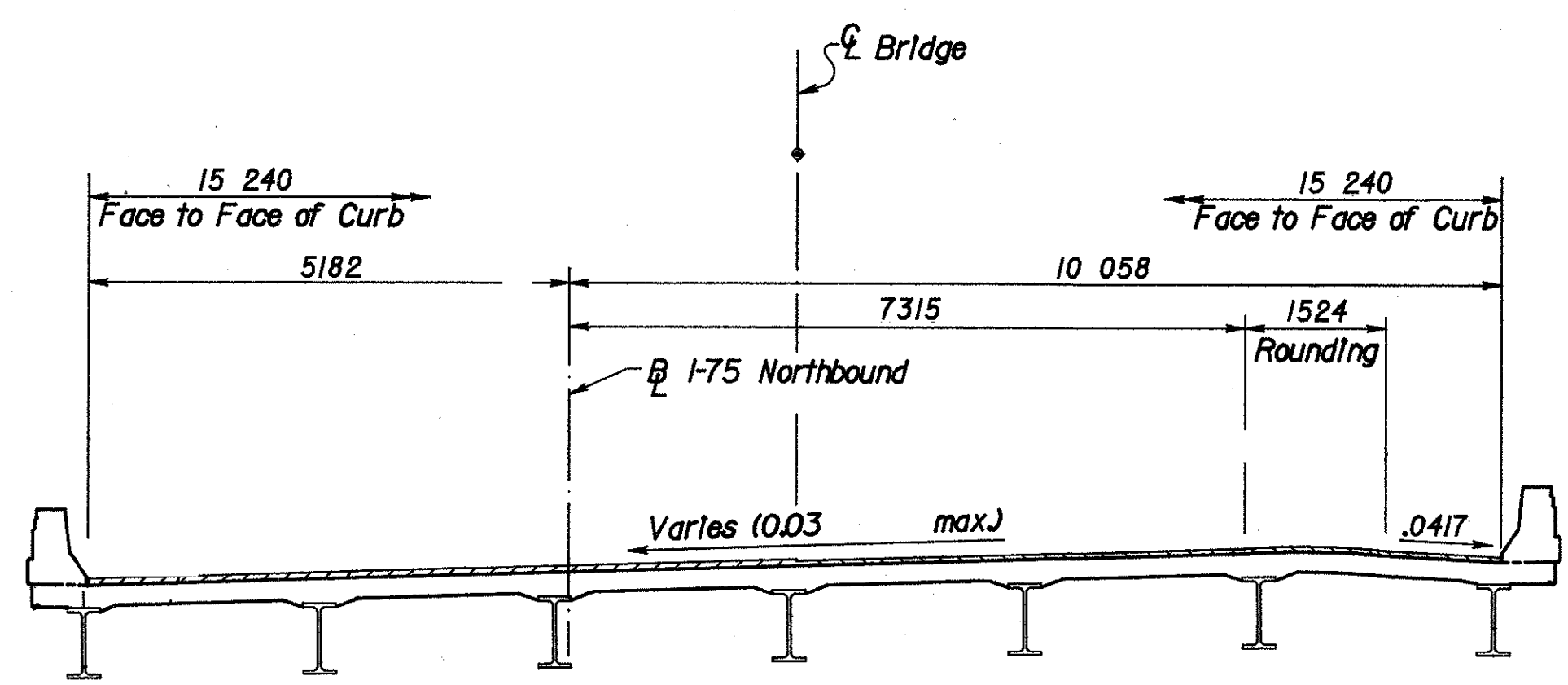


EXISTING TYPICAL SECTION

EXISTING STRUCTURE DATA	
SFN:	3110443
TYPE:	Continuous steel beams and welded plate girder with reinforced concrete deck and substructure
SPANS:	26 213, 30 632, 25 146, 24 536, 25 908, 20 726 c/c bearings
ROADWAY:	15 850 f/f of parapets
LOAD FREQUENCY:	CF = 2000(57)
SKEW:	0°
WEARING SURFACE:	32 concrete overlay
APPR. SLABS:	AS-1-54 (7620 long)
ALIGNMENT:	Tangent



GENERAL PLAN



EXISTING TYPICAL SECTION

PROPOSED WORK:

1. Remove and replace existing strip seal expansion joint at Rear and Forward Abutment.

EXISTING STRUCTURE DATA

SFN: 3110532
 TYPE: Continuous steel beams with reinforced concrete deck and substructure
 SPANS: 11 125, 15 850, 11 125 c/c bearings
 ROADWAY: 15 850 f/f of parapets
 LOAD FREQUENCY: CF = 2000(57)
 SKEW: 1° 46' 31" R.F.
 WEARING SURFACE: 32 concrete overlay
 APPR. SLABS: AS-1-54 (7620 long)
 ALIGNMENT: Spiral curve

07-JAN-1998 11:09 jmeyer
 I:\br\bfunk\75\joint\1152plan.dgn

DESIGN AGENCY
 DISTRICT 8
 BRIDGE PRODUCTION

DATE
 REVIEWED
 MLM
 STRUCTURE FILE NUMBER

DRAWN
 MLM
 REVISION

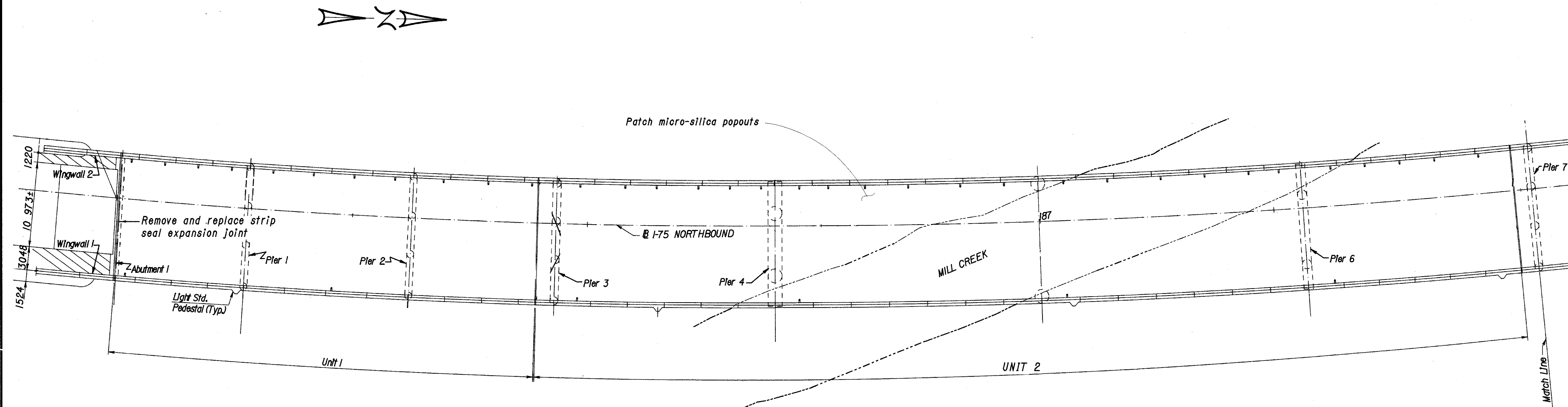
DESIGNED
 BJF
 CHECKED
 MLM

GENERAL PLAN

BRIDGE NO. HAM-75-18540 (1152) R

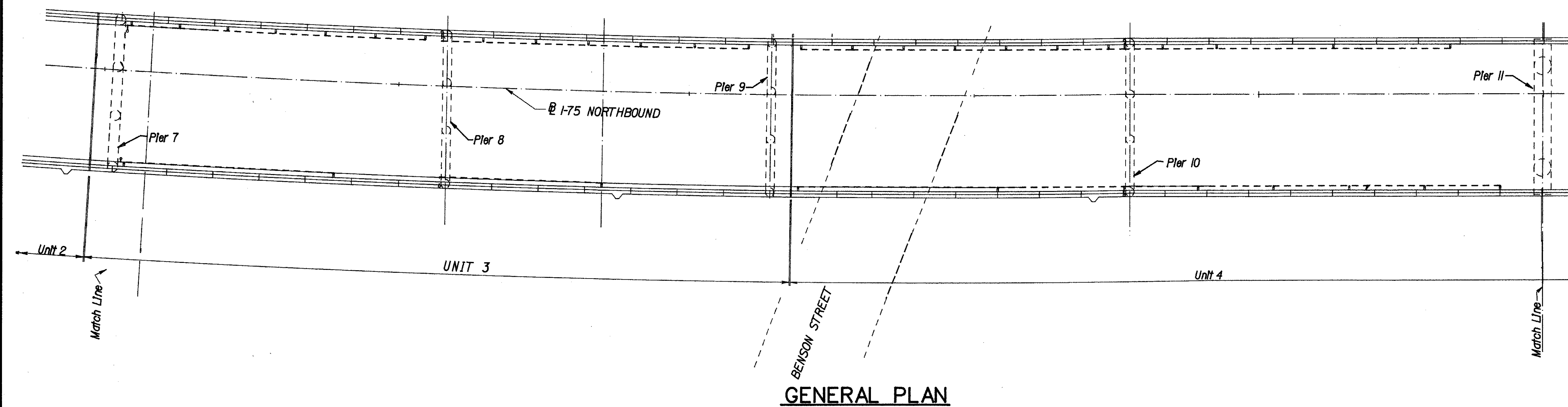
HAM-75-17.742

08-JAN-1998 12:34 j.meyer
 I:\br\funk\75\Joint\1192p1n1.dgn



PROPOSED WORK:

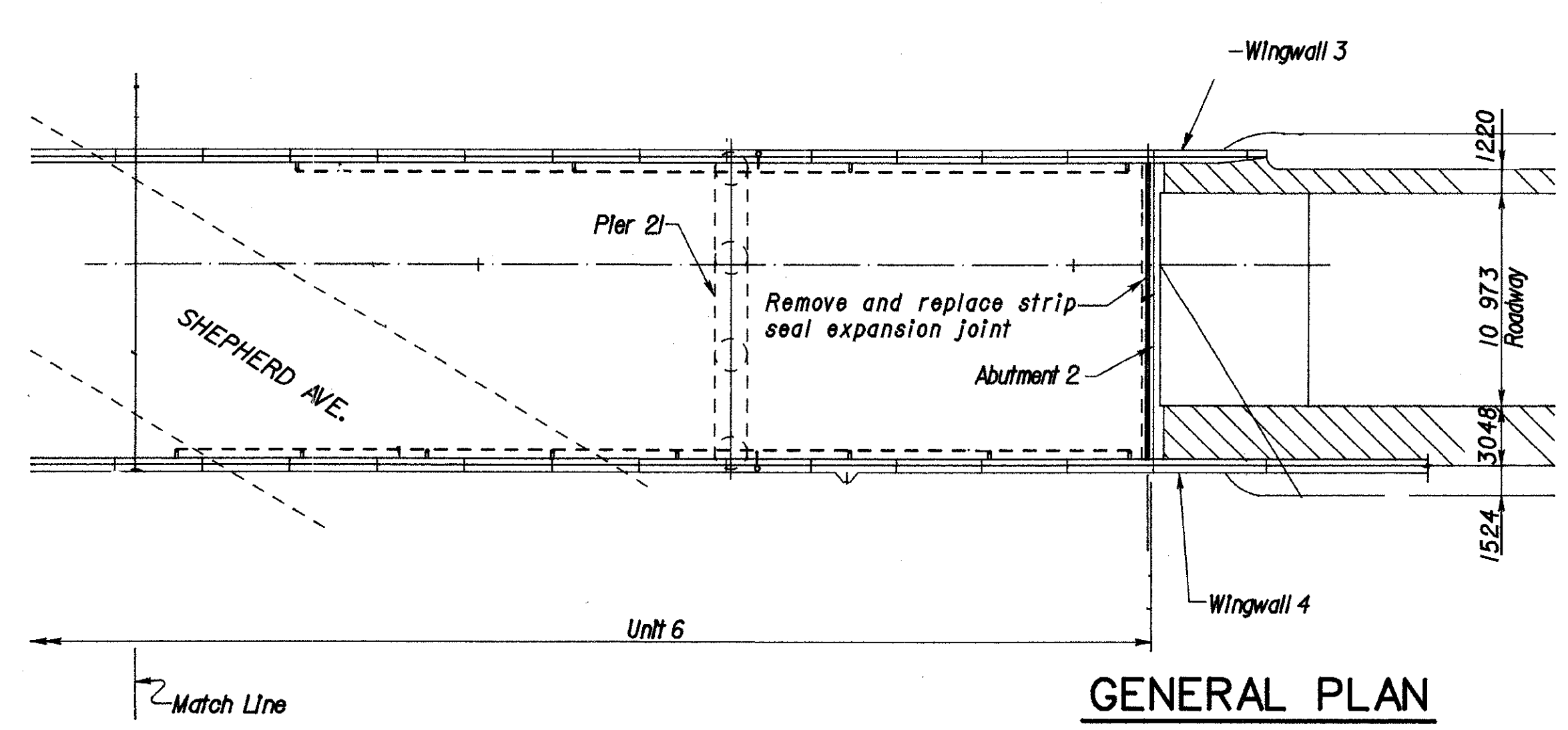
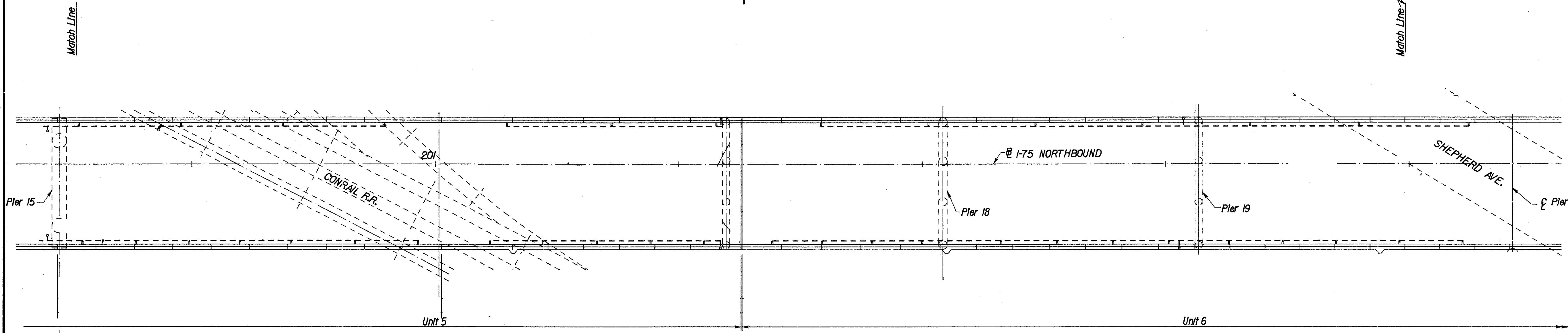
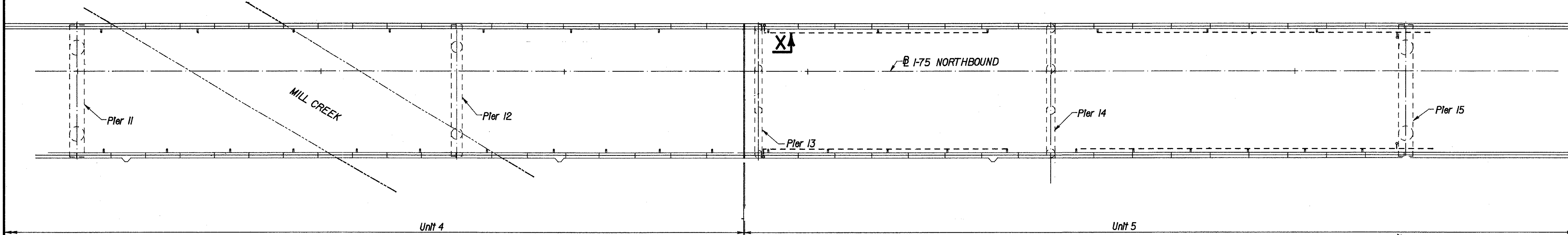
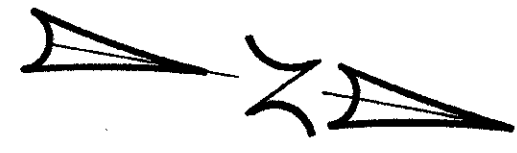
1. Remove and replace existing strip seal expansion joints.
2. Repair "popouts" in existing concrete overlay.



GENERAL PLAN

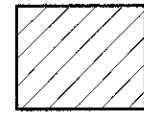
EXISTING STRUCTURE	
TYPE: Continuous rolled beam and welded plate girder with reinforced concrete deck and substructure.	
ROADWAY: 15' 240 f/f of 305 safety curbs	
SPANS: 16 916, 21 336, 18 745, 28 346, 33 909, 33 909, 30 175, 34 595, 34 595, 38 405, 44 425, 47 549, 37 795, 36 576, 44 425, 47 549, 35 966, 27 127, 32 004, 39 319, 30 480, 21 336	
APPROACH SLABS: AS-1-54 (7620 long)	
ALIGNMENT: 145° curve to left, 350'-0" spiral and tangent	
SFN: 3110656	
SKEW: 0°0'0"	

08-JAN-1998 12:45 jmeyer
 I:\br\Funk\75\Joint\192pin2.dgn

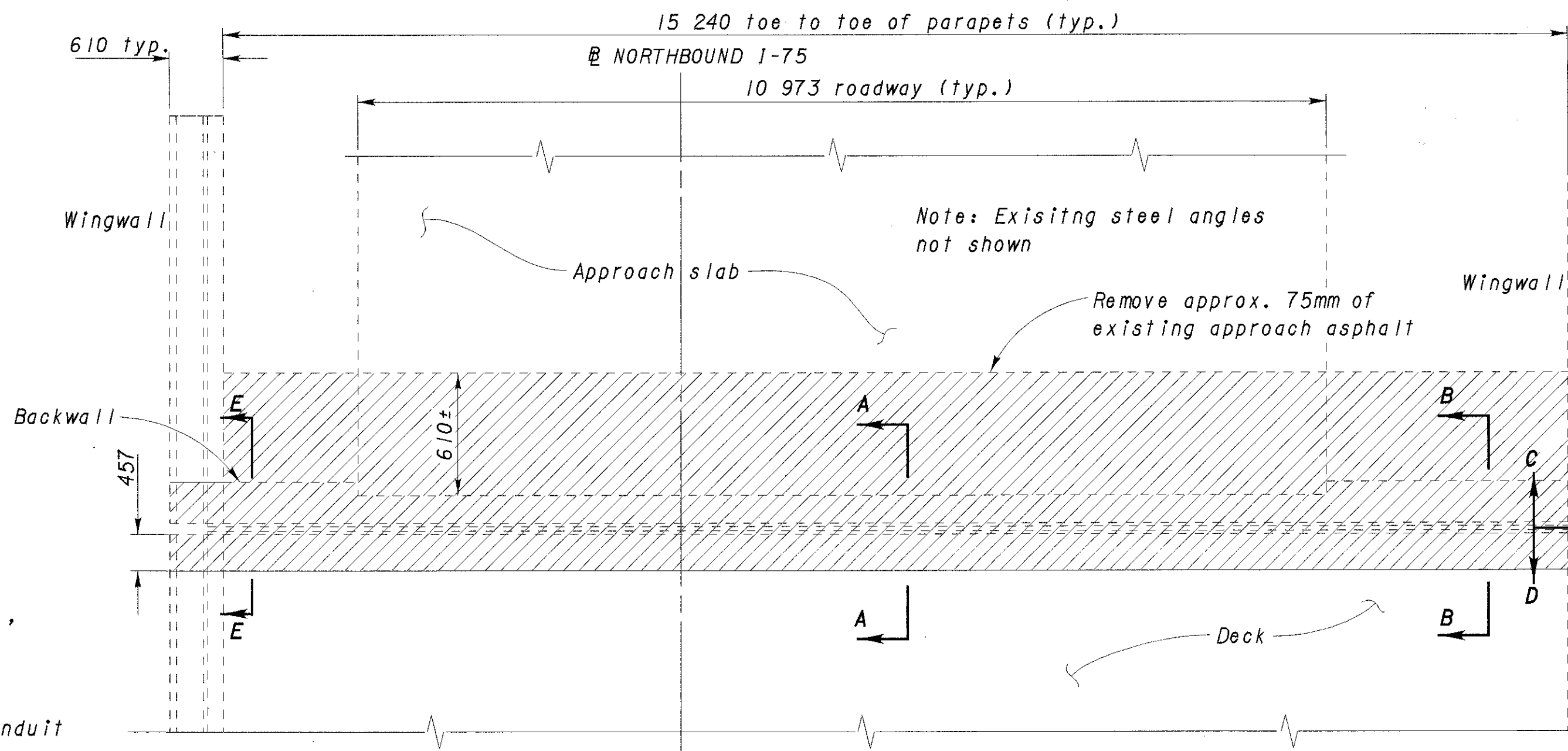


GENERAL PLAN

DESIGNED BJF	DRAWN BJF	REVIEWED MLM	DATE	DESIGN AGENCY
			STRUCTURE FILE NUMBER	DISTRICT 8 BRIDGE PRODUCTION
GENERAL PLAN				
BRIDGE NO. HAM-75-19183 (1192) R				
HAM-75-17.742				
				18 20

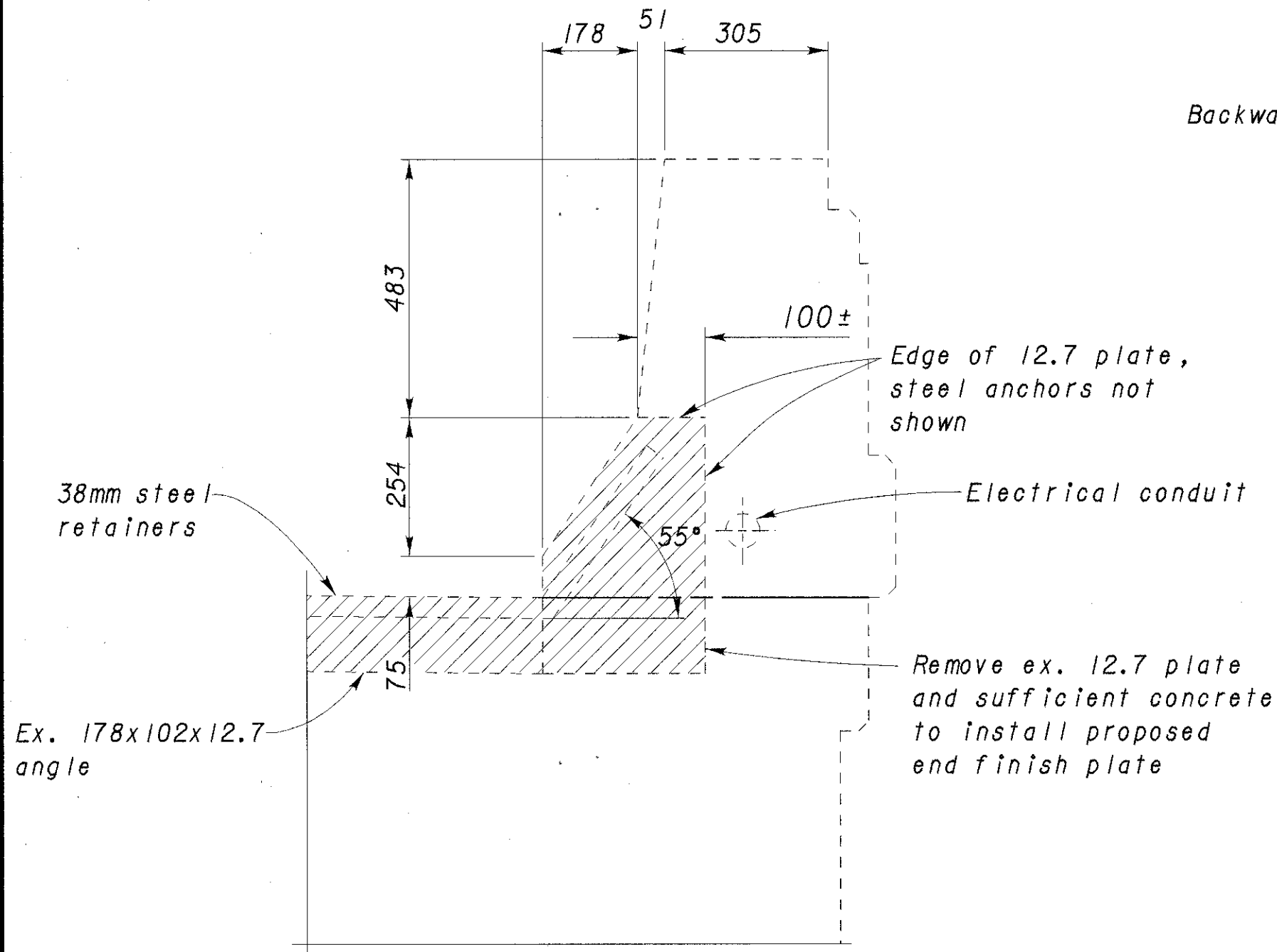


Item 202 Portions of Structure Removed, As Per Plan

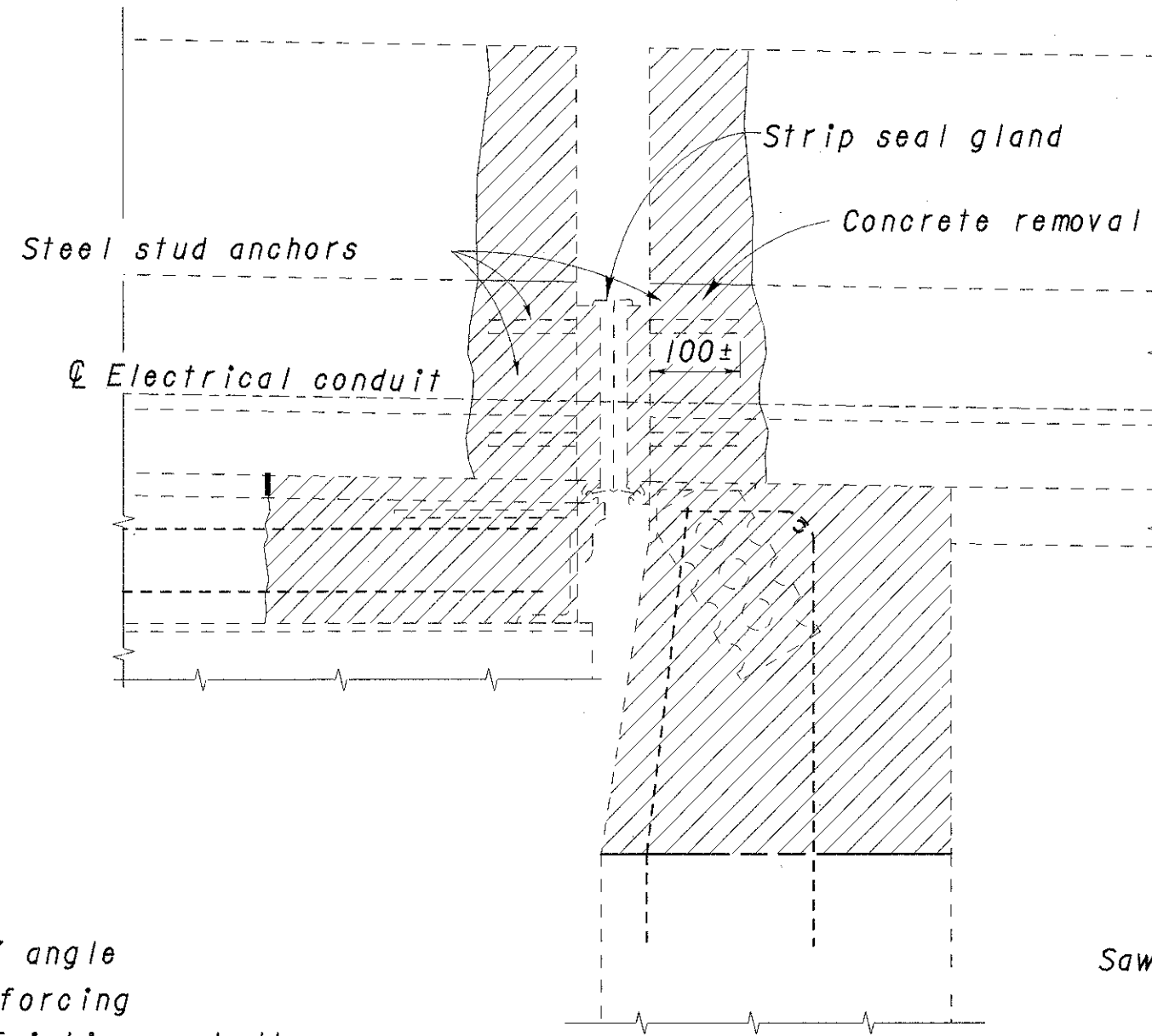


PLAN - EXISTING ABUTMENT

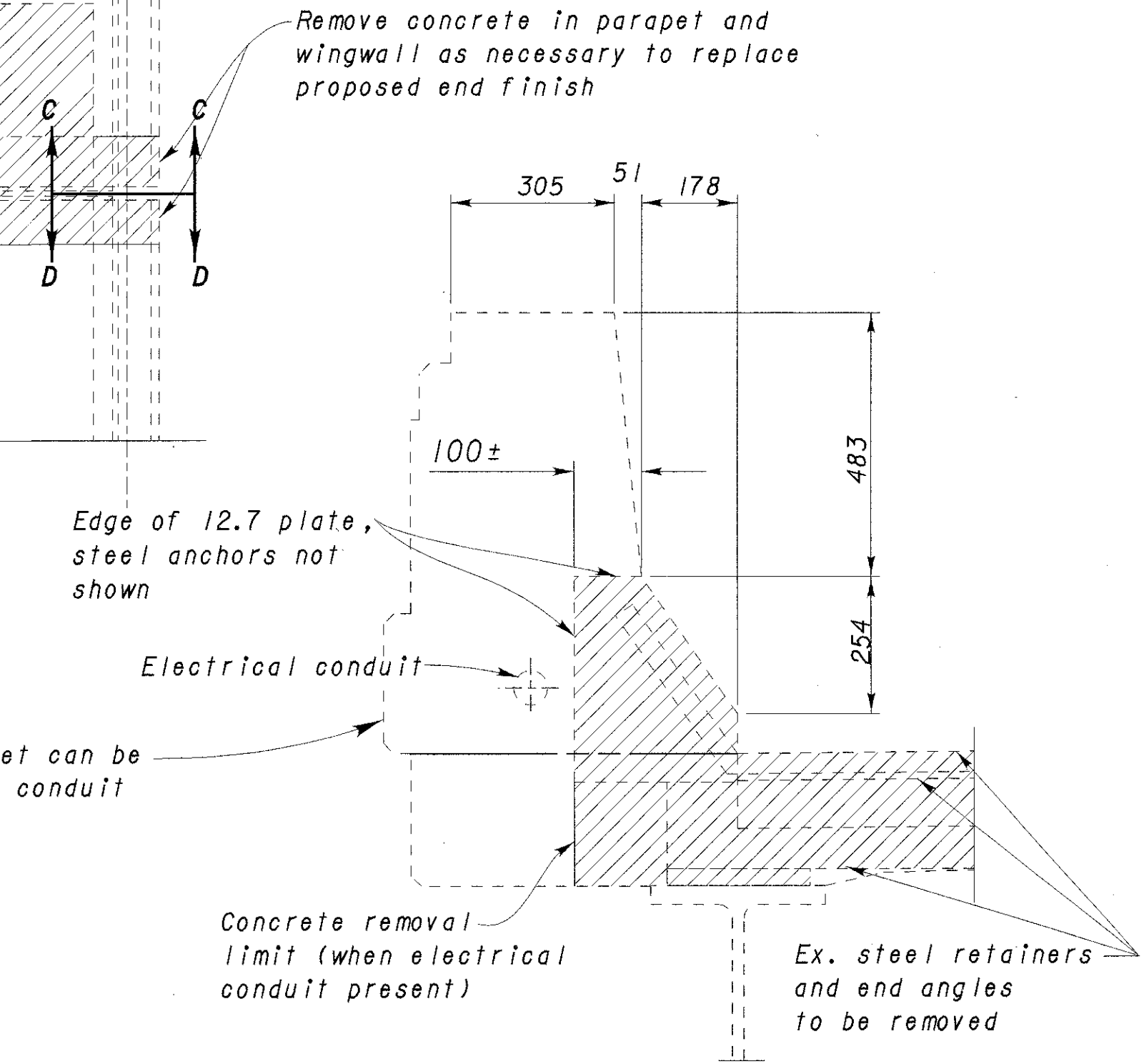
Forward abutments shown, rear abutments similar



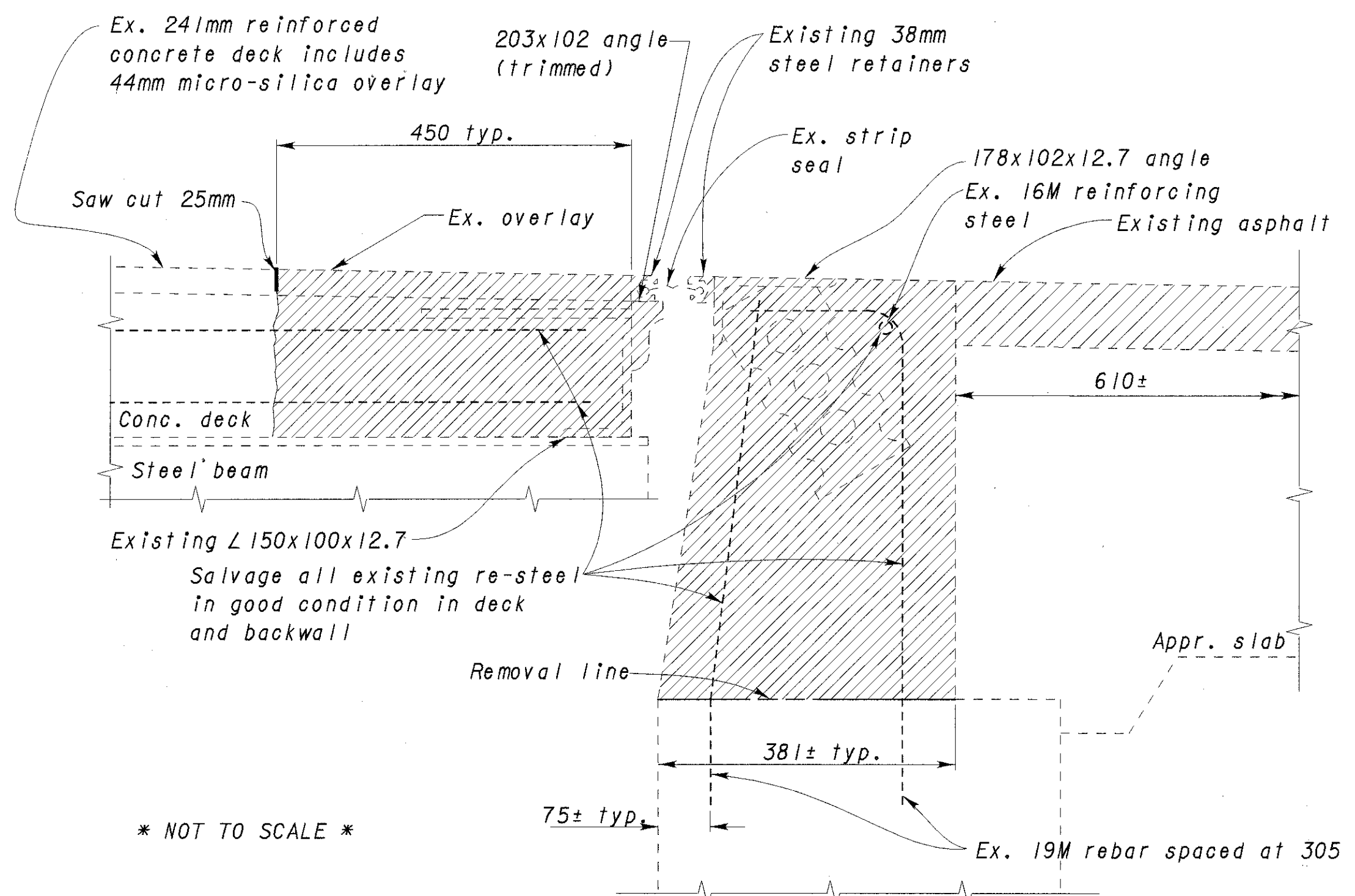
SECTION C-C



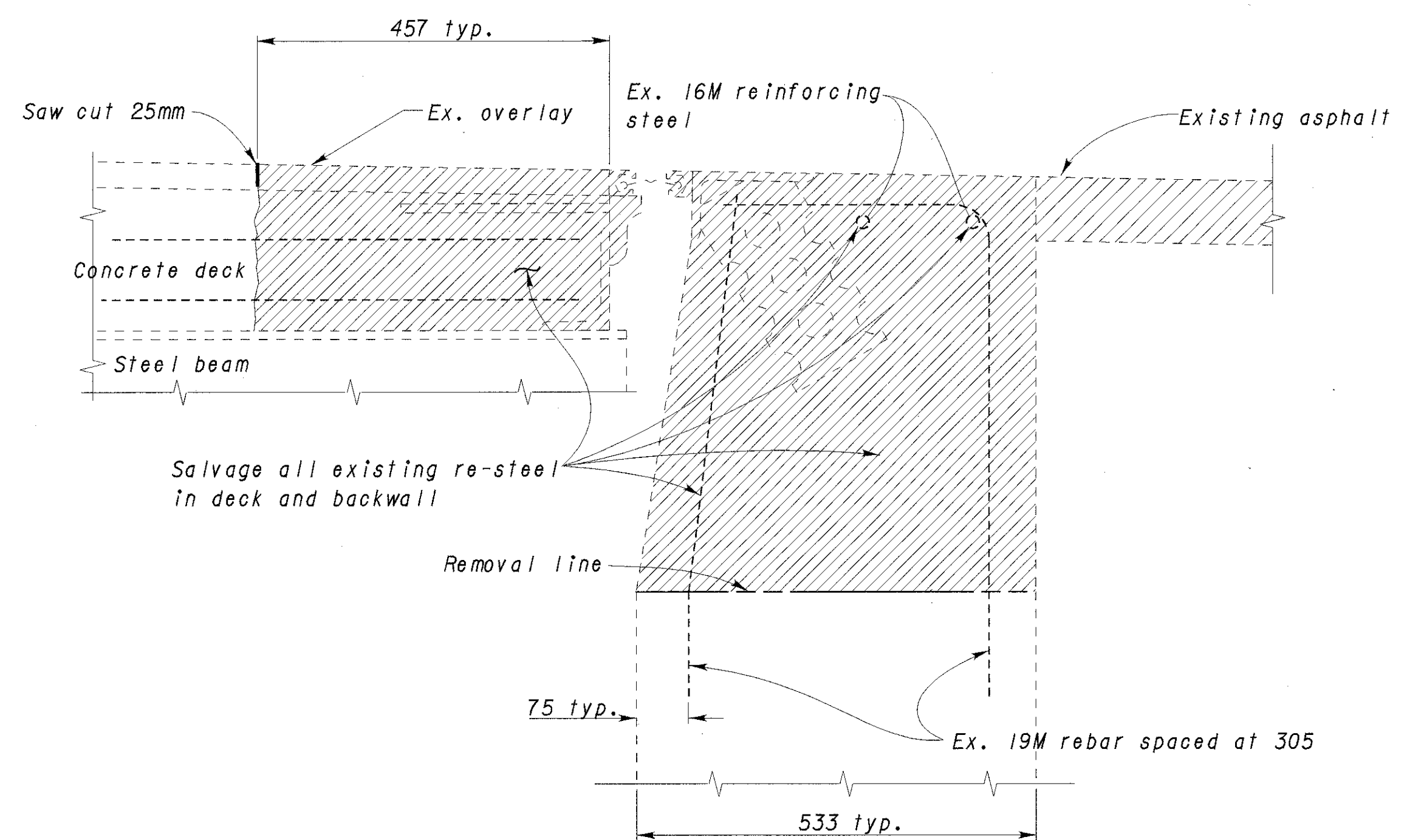
SECTION E-E



SECTION D-D



SECTION A-A



SECTION B-B

* NOT TO SCALE *

06-JAN-1998 15:26 bfunke
I:\br\bfunke\75\joint\1102r-fix.dgn

DESIGN AGENCY
DISTRICT 8
BRIDGE PRODUCTION

DATE
REVIEWED
MLM

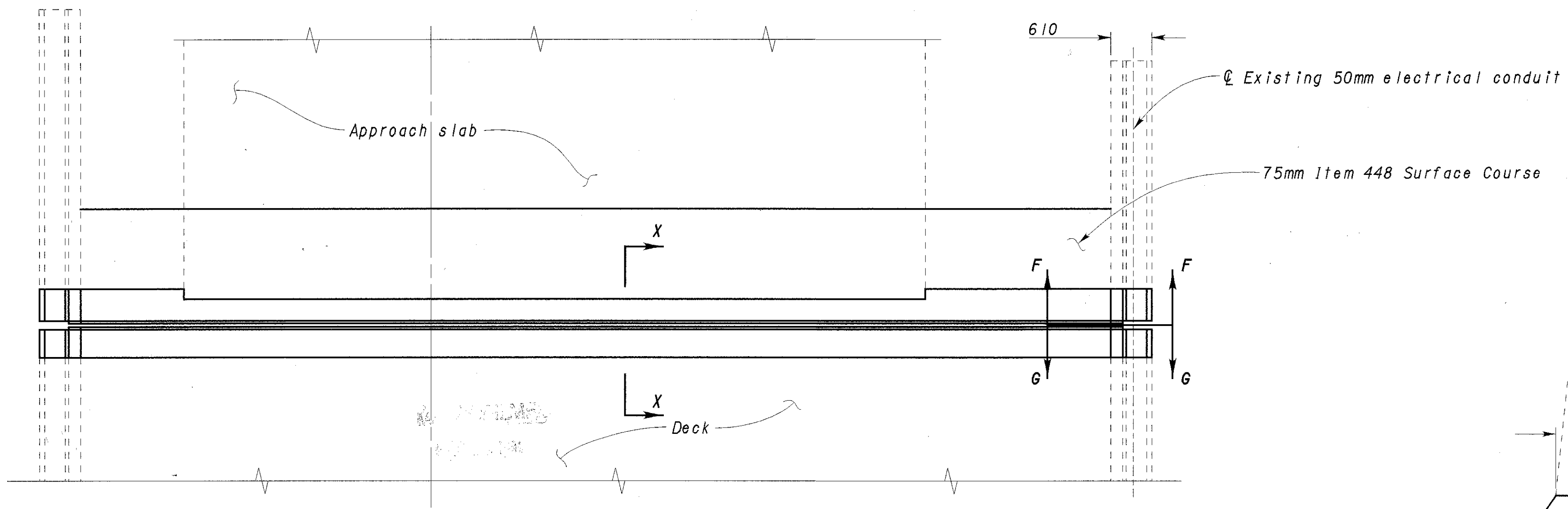
STRUCTURE FILE NUMBER
VARIOUS

DESIGNED
BJF
CHECKED
MLM

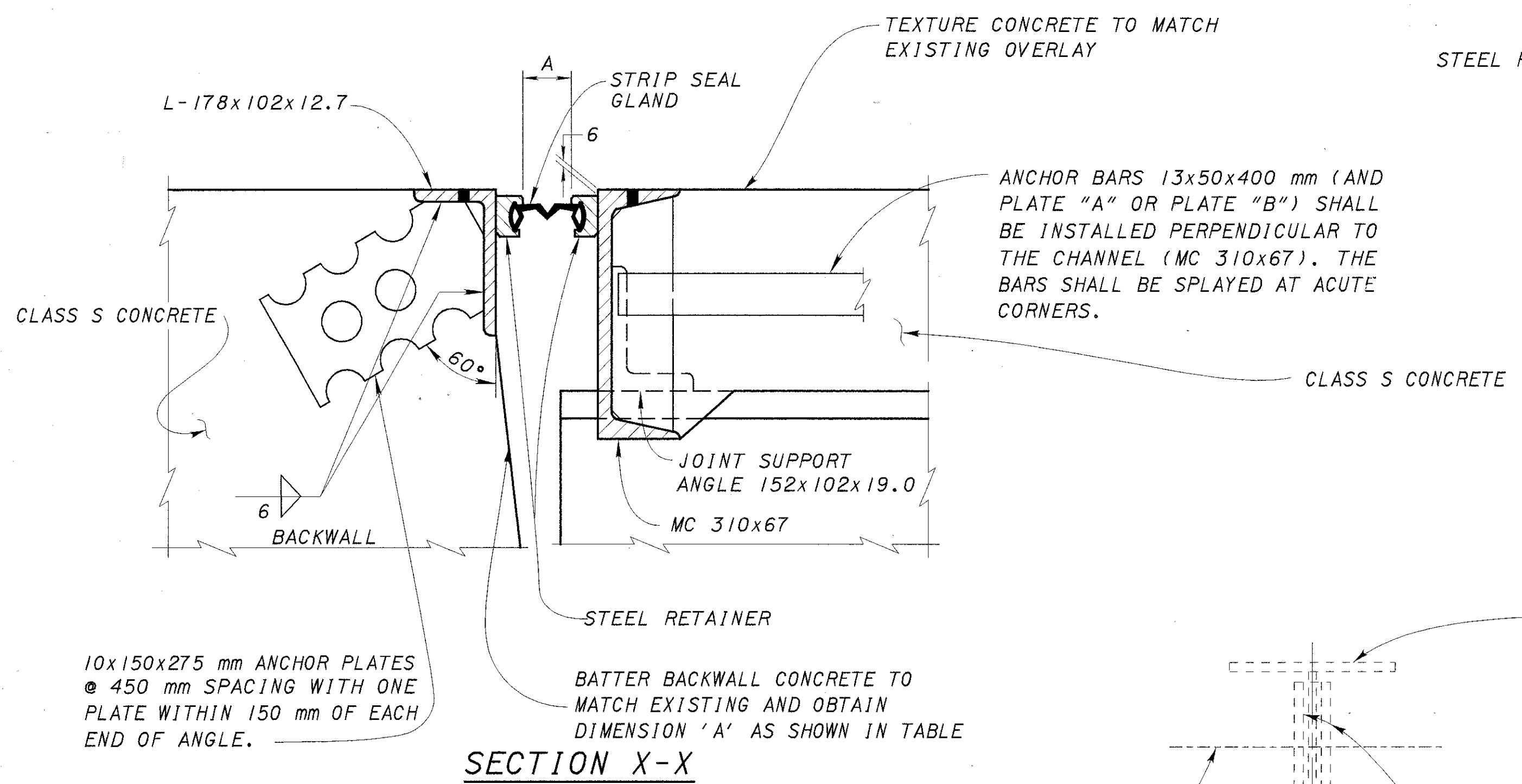
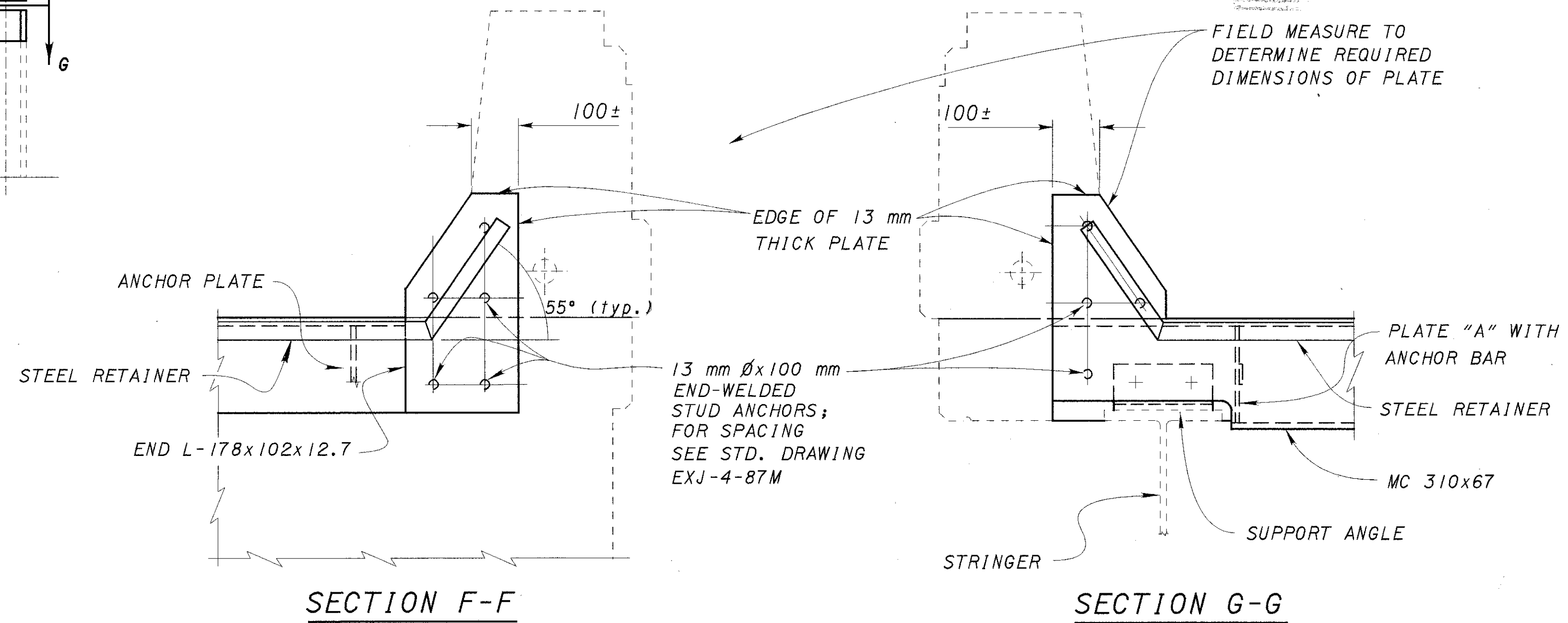
EXISTING BACKWALL DETAILS

HAM-75-17.742

19
20

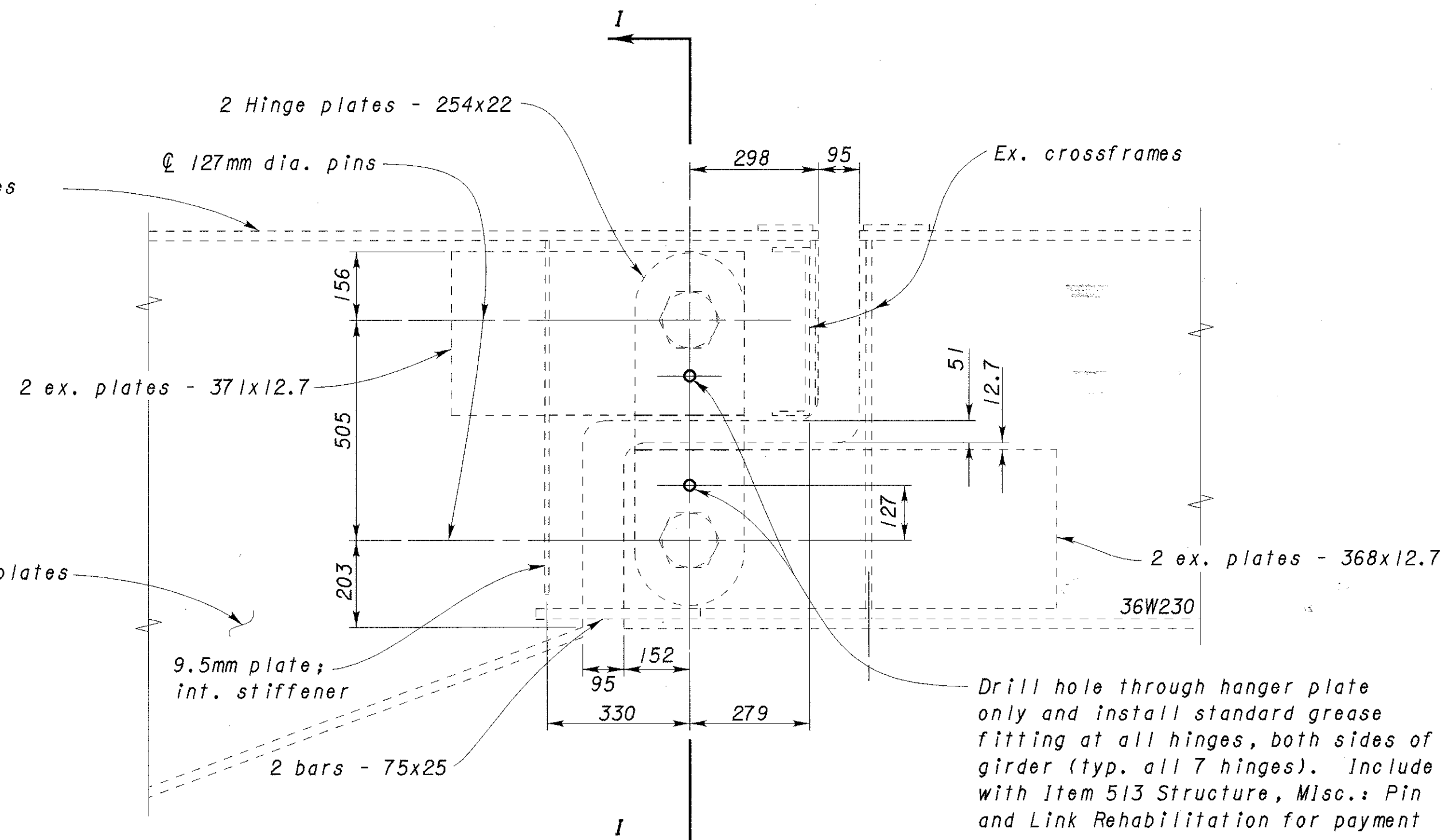
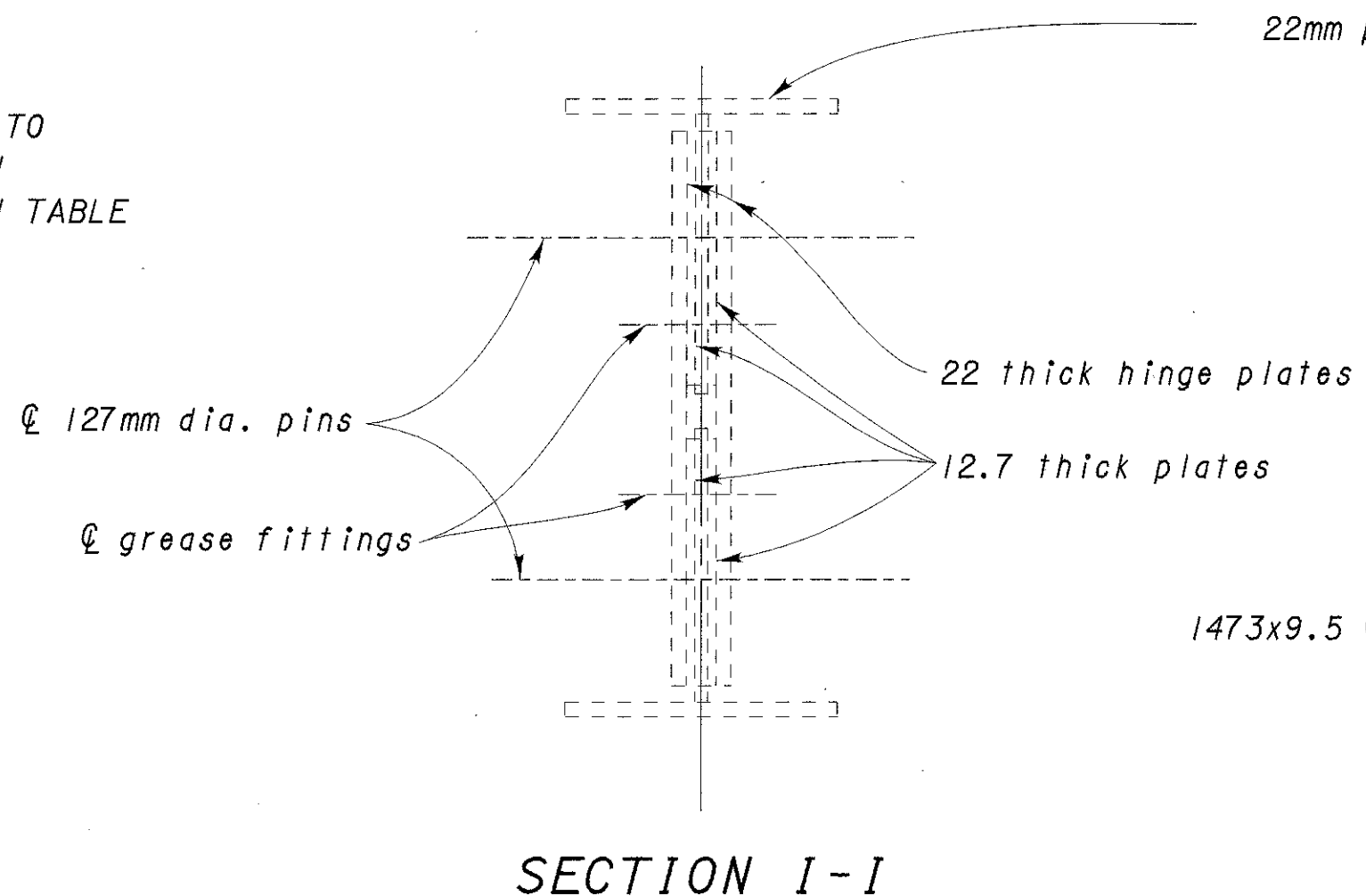


PLAN - PROPOSED ABUTMENT
Forward abutments shown, rear abutments similar



DIMENSION 'A' (IN MM)

°C	HAM-75-17735R	HAM-75-18540R	HAM-75-19183R REAR ABUT.	HAM-75-19183R FWD. ABUT.
0	46	46	48	64
5	45	45	46	59
10	43	43	42	54
15	42	42	40	48
20	40	40	38	43
25	38	38	36	38
30	36	36	34	32
35	35	35	32	27



TYPICAL PIN AND LINK DETAIL
BRIDGE NO. HAM-75-17735 (1102)R