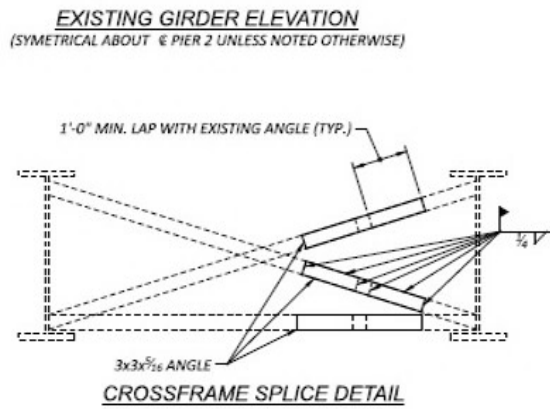
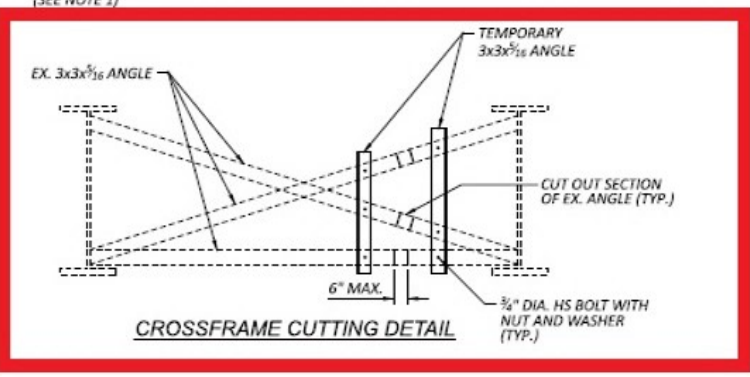
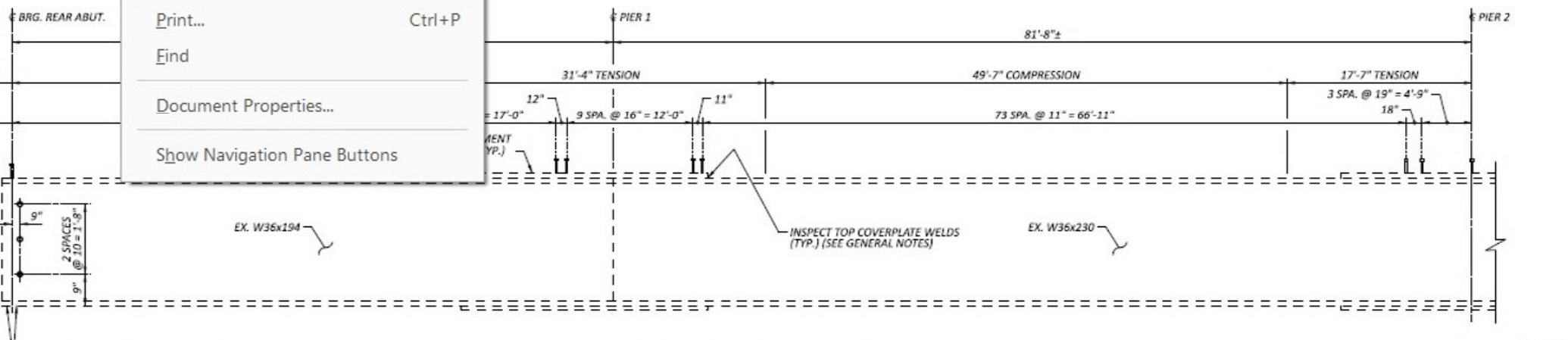
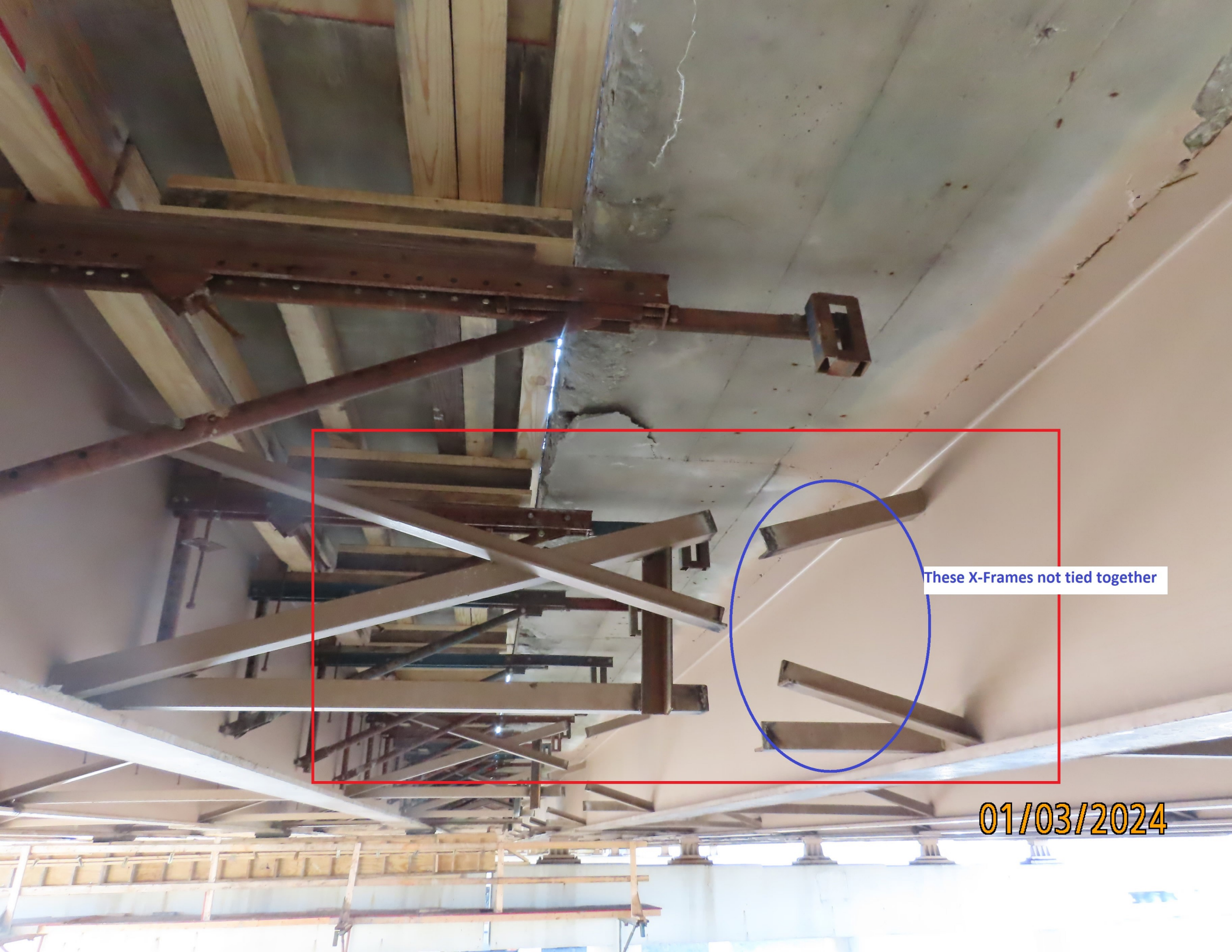


Select Tool
 Hand Tool
 Marquee Zoom
 Previous View
 Rotate Clockwise
 Print... Ctrl+P
 Find
 Document Properties...
 Show Navigation Pane Buttons



- NOTES:**
1. DRILLING OF 2" DIA. HOLES, 1" DIA. VENT HOLES, CUTTING EXISTING CROSSFRAMES AND SPLICING EXISTING CROSSFRAMES SHALL BE INCLUDED WITH ITEM 513 - STRUCTURAL STEEL MISC.; CUT AND SPLICE EXISTING CROSSFRAME MEMBERS FOR PAYMENT.
 2. ADJUST SHEAR CONNECTOR SPACING AS REQUIRED TO AVOID END OF EXISTING COVER PLATE



These X-Frames not tied together

01/03/2024