

LETTER OF TRANSMITTAL

BRAYMAN CONSTRUCTION CORP.
 1000 John Roebling Way
 Saxonburg, PA 16056
 Phone: (724) 443-1533
 Fax: (724) 443-8733



To: Ohio Dept. of Transportation
 District 9
 650 Eastern Avenue
 Chillicothe, OH 45601

Project: SR-93-0.00
 Ironton Russell Bridge
 Lawrence County, OH
 Project No. 110628

BCC # 106-022-000

Attention: Dave Bame

Date: March 18, 2014

We are sending you the following items:

- | | | | |
|-----------------------------------------|---------------------------------|-----------------------------------------------|----------------------------------------------|
| <input type="checkbox"/> Copy of Letter | <input type="checkbox"/> Prints | <input type="checkbox"/> Under Separate Cover | <input checked="" type="checkbox"/> Attached |
| <input type="checkbox"/> Shop Drawings | <input type="checkbox"/> Plans | <input type="checkbox"/> Specifications | <input type="checkbox"/> Change Order |
| | | <input type="checkbox"/> _____ | |

Copies	Date	Description
1	3/18/14	Schedule Update 18 Unimpacted and Impacted Schedules for Feb. 2014 High Water Delay

Transmitted for the following purpose:

- | | | |
|--------------------------------------------------|---------------------------------------------------|------------------------------------------------------------|
| <input checked="" type="checkbox"/> For Approval | <input type="checkbox"/> Approved as Submitted | <input type="checkbox"/> Resubmit __ copies for approval |
| <input type="checkbox"/> For Your Use | <input type="checkbox"/> Approved as Noted | <input type="checkbox"/> Submit __ copies for distribution |
| <input type="checkbox"/> As Requested | <input type="checkbox"/> Returned for Corrections | <input type="checkbox"/> Return __ corrected prints |
| <input type="checkbox"/> For Review & Comment | <input type="checkbox"/> For Certification | |

MAIL: Regular Overnight Certified Email **FAX:**

Remarks:

Aaron Downs

cc: File/arb
 Dan Beasley
 Edwin Callicutt
 Eric McLaughlin

Signed: Aaron Downs
 Project Engineer

Ironton Russell Bridge over Ohio River

LAW-93C-0000

Schedule Update 18 Unimpacted and Impacted Schedules for Feb. 2014 High Water Delay

For:



District 9

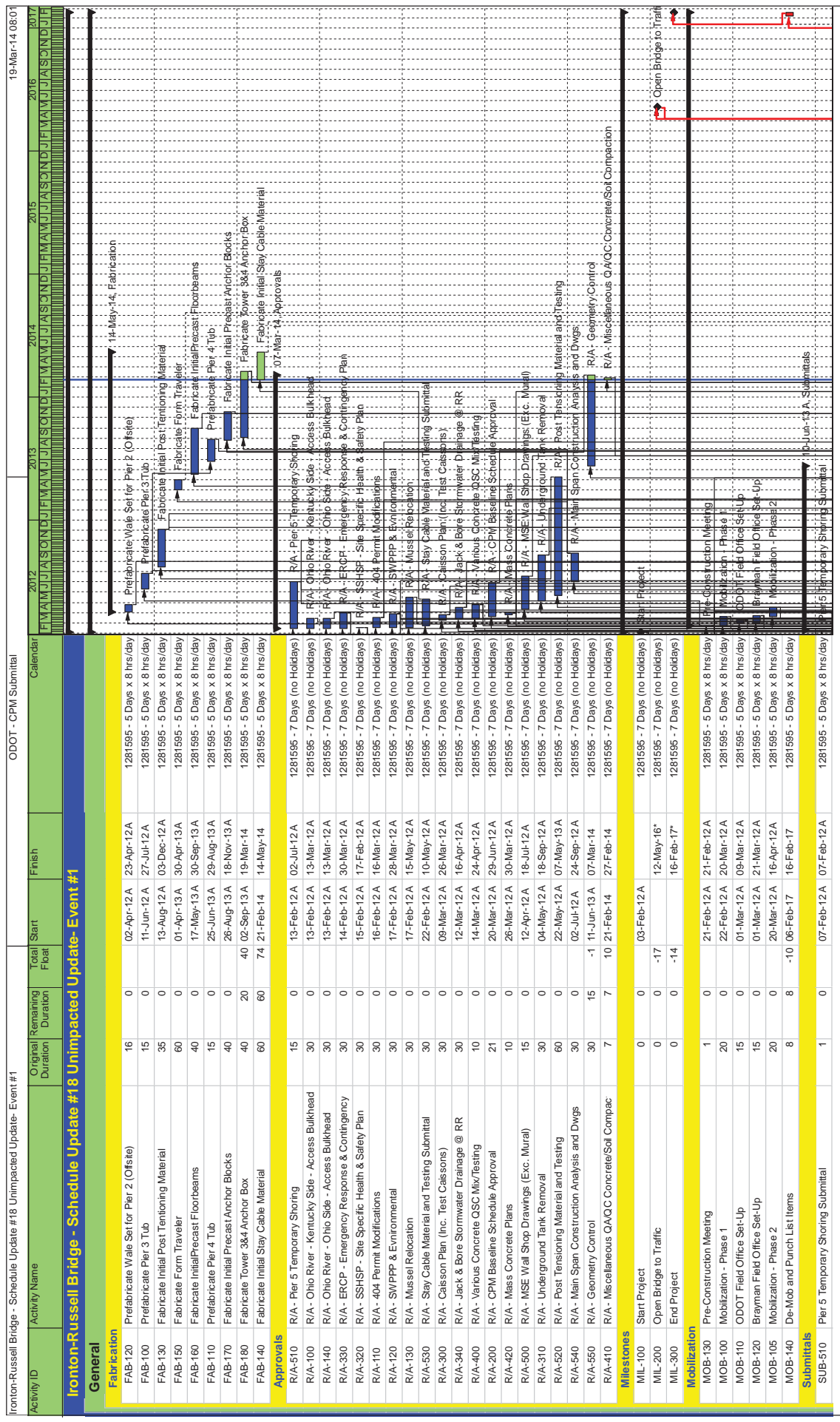
Submitted By:



1000 John Roebling Way

Saxonburg, Pa 16056

March 18, 2014



Activity ID	Activity Name	Original Duration	Remaining Duration	Total Float	Start	Finish	Calendar
FAB-120	Prefabricate Wale Set for Pier 2 (Ofsite)	16	0	0	02-Apr-12A	23-Apr-12A	1281595 - 5 Days x 8 hrs/day
FAB-100	Prefabricate Pier 3 Tub	15	0	0	11-Jun-12A	27-Jun-12A	1281595 - 5 Days x 8 hrs/day
FAB-130	Fabricate Initial Post Tensioning Material	35	0	0	13-Aug-12A	03-Dec-12A	1281595 - 5 Days x 8 hrs/day
FAB-150	Fabricate Form Traveler	60	0	0	01-Apr-13A	30-Apr-13A	1281595 - 5 Days x 8 hrs/day
FAB-160	Fabricate Initial Precast Floorbeams	40	0	0	17-May-13A	30-Sep-13A	1281595 - 5 Days x 8 hrs/day
FAB-110	Prefabricate Pier 4 Tub	15	0	0	25-Jun-13A	29-Aug-13A	1281595 - 5 Days x 8 hrs/day
FAB-170	Fabricate Initial Precast Anchor Blocks	40	0	0	26-Aug-13A	18-Nov-13A	1281595 - 5 Days x 8 hrs/day
FAB-180	Fabricate Tower 384 Anchor Box	40	20	40	02-Sep-13A	19-Mar-14	1281595 - 5 Days x 8 hrs/day
FAB-140	Fabricate Initial Stay Cable Material	60	60	74	21-Feb-14	14-May-14	1281595 - 5 Days x 8 hrs/day
Approvals							
R/A-510	R/A - Pier 5 Temporary Shoring	15	0	0	13-Feb-12A	02-Jun-12A	1281595 - 7 Days (no Holidays)
R/A-100	R/A - Ohio River - Kentucky Side - Access Bulkhead	30	0	0	13-Feb-12A	13-Mar-12A	1281595 - 7 Days (no Holidays)
R/A-140	R/A - Ohio River - Ohio Side - Access Bulkhead	30	0	0	13-Feb-12A	13-Mar-12A	1281595 - 7 Days (no Holidays)
R/A-330	R/A - ERCP - Emergency Response & Contingency	30	0	0	14-Feb-12A	30-Mar-12A	1281595 - 7 Days (no Holidays)
R/A-320	R/A - SSHSP - Site Specific Health & Safety Plan	30	0	0	15-Feb-12A	17-Feb-12A	1281595 - 7 Days (no Holidays)
R/A-110	R/A - 404 Permit Modifications	30	0	0	16-Feb-12A	16-Mar-12A	1281595 - 7 Days (no Holidays)
R/A-120	R/A - SWPPP & Environmental	30	0	0	17-Feb-12A	28-Mar-12A	1281595 - 7 Days (no Holidays)
R/A-300	R/A - Mussel Relocation	30	0	0	17-Feb-12A	15-May-12A	1281595 - 7 Days (no Holidays)
R/A-530	R/A - Stay Cable Material and Testing Submittal	30	0	0	22-Feb-12A	10-May-12A	1281595 - 7 Days (no Holidays)
R/A-300	R/A - Caisson Plan (Inc. Test Caissons)	30	0	0	09-Mar-12A	26-Mar-12A	1281595 - 7 Days (no Holidays)
R/A-340	R/A - Jack & Bore Stormwater Drainage @ RR	10	0	0	12-Mar-12A	16-Apr-12A	1281595 - 7 Days (no Holidays)
R/A-400	R/A - Various Concrete OSC Mix/Testing	30	0	0	14-Mar-12A	24-Apr-12A	1281595 - 7 Days (no Holidays)
R/A-200	R/A - OPM Baseline Schedule Approval	21	0	0	20-Mar-12A	29-Jun-12A	1281595 - 7 Days (no Holidays)
R/A-420	R/A - Mass Concrete Plans	10	0	0	26-Mar-12A	30-Mar-12A	1281595 - 7 Days (no Holidays)
R/A-500	R/A - MSE Wall Shop Drawings (Exc. Mural)	15	0	0	04-May-12A	18-Jul-12A	1281595 - 7 Days (no Holidays)
R/A-310	R/A - Underground Tank Removal	30	0	0	02-May-12A	18-Sep-12A	1281595 - 7 Days (no Holidays)
R/A-520	R/A - Post Tensioning Material and Testing	60	0	0	22-May-12A	07-May-13A	1281595 - 7 Days (no Holidays)
R/A-540	R/A - Main Span Construction Analysis and Dwg's	30	0	0	02-Jul-12A	24-Sep-12A	1281595 - 7 Days (no Holidays)
R/A-550	R/A - Geometry Control	30	15	-1	11-Jun-13A	07-Mar-14	1281595 - 7 Days (no Holidays)
R/A-410	R/A - Miscellaneous QA/QC Concrete/Sol Compac	7	7	10	21-Feb-14	27-Feb-14	1281595 - 7 Days (no Holidays)
Milestones							
MIL-100	Start Project	0	0	0	03-Feb-12A		1281595 - 7 Days (no Holidays)
MIL-200	Open Bridge to Traffic	0	0	-17	12-May-16*		1281595 - 7 Days (no Holidays)
MIL-300	End Project	0	0	-14	16-Feb-17*		1281595 - 7 Days (no Holidays)
Mobilization							
MOB-130	Pre-Construction Meeting	1	0	0	21-Feb-12A	21-Feb-12A	1281595 - 5 Days x 8 hrs/day
MOB-100	Mobilization - Phase 1	20	0	0	22-Feb-12A	20-Mar-12A	1281595 - 5 Days x 8 hrs/day
MOB-110	ODOT Field Office Set-Up	15	0	0	01-Mar-12A	09-Mar-12A	1281595 - 5 Days x 8 hrs/day
MOB-120	Bryman Field Office Set-Up	15	0	0	11-Mar-12A	21-Mar-12A	1281595 - 5 Days x 8 hrs/day
MOB-105	Mobilization - Phase 2	20	0	0	20-Mar-12A	16-Apr-12A	1281595 - 5 Days x 8 hrs/day
MOB-140	De-Mob and Punch List Items	8	8	-10	06-Feb-17	16-Feb-17	1281595 - 5 Days x 8 hrs/day
Submittals							
SUB-510	Pier 5 Temporary Shoring Submittal	1	0	0	07-Feb-12A	07-Feb-12A	1281595 - 5 Days x 8 hrs/day

Page 1 of 9
 TASK Iter: All Activities
 Summary
 Actual Work
 Remaining Work
 Critical Remaining Work
 Milestone

Activity ID	Activity Name	Original Duration	Remaining Duration	Total Float	Start	Finish	Days	2012	2013	2014	2015	2016	2017
SUB-300	Initial Workplan & Safety Submittals	1	0	0	13-Feb-12A	13-Feb-12A	5 Days x 8 hrs/day						
SUB-100	Environmental Submittals	1	0	0	14-Feb-12A	14-Feb-12A	5 Days x 8 hrs/day						
SUB-400	Initial Material Submittals	1	0	0	20-Mar-12A	20-Mar-12A	5 Days x 8 hrs/day						
SUB-200	CPW Baseline Schedule Submittal	14	0	0	20-Mar-12A	20-Mar-12A	5 Days x 8 hrs/day						
SUB-500	MSE Wall Shop Drawing Submittal	1	0	0	12-Apr-12A	12-Apr-12A	5 Days x 8 hrs/day						
SUB-530	Stay Cable Material and Testing Submittal	1	0	0	21-May-12A	21-May-12A	5 Days x 8 hrs/day						
SUB-520	Post Tensioning Material and Testing Submittal	1	0	0	02-Jul-12A	02-Jul-12A	5 Days x 8 hrs/day						
SUB-540	Main Span Construction Analysis and Dwg Submittal	1	0	0	10-Jun-13A	10-Jun-13A	5 Days x 8 hrs/day						
SUB-550	Geometry Control Submittal	1	0	0	10-Jun-13A	10-Jun-13A	5 Days x 8 hrs/day						
Kentucky Approach													
Substructure													
KYSS-100	Erection of Fabricated Structural Steel - Span 1	8	0	0	29-Jul-13A	09-Aug-13A	5 Days x 10 hrs/day						
KYSS-110	Erection of Fabricated Structural Steel - Span 2	15	0	0	30-Aug-13A	13-Sep-13A	5 Days x 10 hrs/day						
KYSS-200	Deckwork - Span 1	13	0	0	16-Sep-13A	28-Oct-13A	5 Days x 10 hrs/day						
KYSS-210	Deckwork - Span 2	14	0	0	30-Sep-13A	20-Nov-13A	5 Days x 10 hrs/day						
KYSS-300	Groove Deck Concrete - KY Approach	2	2	525	06-Mar-14	10-Mar-14	5 Days x 8 hrs/day						
Substructure													
KYSS-300	Pier 1 Caissons	10	0	0	28-Mar-12A	18-Apr-12A	5 Days x 8 hrs/day						
KYSS-120	Abutment/Wing Rock Excavation	5	0	0	16-Apr-12A	06-Feb-13A	5 Days x 8 hrs/day						
KYSS-110	Abutment/Wing Soil Excavation	5	0	0	16-Apr-12A	06-Feb-13A	5 Days x 8 hrs/day						
KYSS-130	Abutment Caissons	20	0	0	20-Apr-12A	04-May-12A	5 Days x 8 hrs/day						
KYSS-310	Pier 1 Shaft/Cap	20	0	0	25-Apr-12A	22-Jun-12A	5 Days x 8 hrs/day						
KYSS-140	Abutment Concrete - Form	10	0	0	02-May-12A	04-Oct-12A	5 Days x 8 hrs/day						
KYSS-220	Wingwall #2 Concrete - Form	5	0	0	22-Jun-12A	04-Apr-13A	5 Days x 8 hrs/day						
KYSS-230	Wingwall #2 Concrete - Pour	2	0	0	27-Jun-12A	05-Apr-13A	5 Days x 8 hrs/day						
KYSS-180	Wingwall #1 Concrete - Form	5	0	0	06-Aug-12A	21-Feb-13A	5 Days x 8 hrs/day						
KYSS-100	Pipe Work @ Abutment & Near RR	10	0	0	08-Aug-12A	10-Aug-12A	5 Days x 8 hrs/day						
KYSS-190	Wingwall #1 Concrete - Pour	2	0	0	20-Aug-12A	25-Feb-13A	5 Days x 8 hrs/day						
KYSS-160	Abutment Concrete - Pour	2	0	0	05-Oct-12A	05-Oct-12A	5 Days x 8 hrs/day						
KYSS-160	Abutment Concrete - Cure	7	0	0	06-Oct-12A	11-Oct-12A	7 Days (no Holidays)						
KYSS-170	Abutment Concrete - Strip	3	0	0	12-Oct-12A	16-Oct-12A	5 Days x 8 hrs/day						
KYSS-200	Wingwall #1 Concrete - Cure	7	0	0	01-Mar-13A	15-Mar-13A	7 Days (no Holidays)						
KYSS-240	Wingwall #2 Concrete - Cure	7	0	0	08-Apr-13A	14-Apr-13A	7 Days (no Holidays)						
KYSS-210	Wingwall #1 Concrete - Strip	3	0	0	15-Apr-13A	22-Apr-13A	5 Days x 8 hrs/day						
KYSS-250	Wingwall #2 Concrete - Strip	3	0	0	15-Apr-13A	22-Apr-13A	5 Days x 8 hrs/day						
KYSS-260	Backfill @ Abutment & Wingwalls	5	0	0	16-Apr-13A	26-Jun-13A	5 Days x 8 hrs/day						
Ohio Approach													
Substructure													
OHSUB-300	Pier 8 Excavation	2	0	0	25-Apr-12A	27-Apr-12A	5 Days x 8 hrs/day						
OHSUB-310	Pier 8 Piling	5	0	0	27-Apr-12A	17-May-12A	5 Days x 8 hrs/day						
OHSUB-320	Pier 8 Footer/Shaft/Cap	15	0	0	21-May-12A	17-Jul-12A	5 Days x 8 hrs/day						
OHSUB-420	Forward Abutment Piling	5	0	0	07-Jun-12A	12-Jun-12A	5 Days x 8 hrs/day						
OHSUB-100	Pier 6 Excavation	2	0	0	11-Jun-12A	12-Jun-12A	5 Days x 8 hrs/day						
OHSUB-110	Pier 6 Piling	4	0	0	20-Jun-12A	20-Jun-12A	5 Days x 8 hrs/day						
OHSUB-200	Pier 7 Excavation	2	0	0	20-Jun-12A	21-Jun-12A	5 Days x 8 hrs/day						
OHSUB-120	Pier 6 Footer/Shaft/Cap	20	0	0	21-Jun-12A	07-Aug-12A	5 Days x 8 hrs/day						

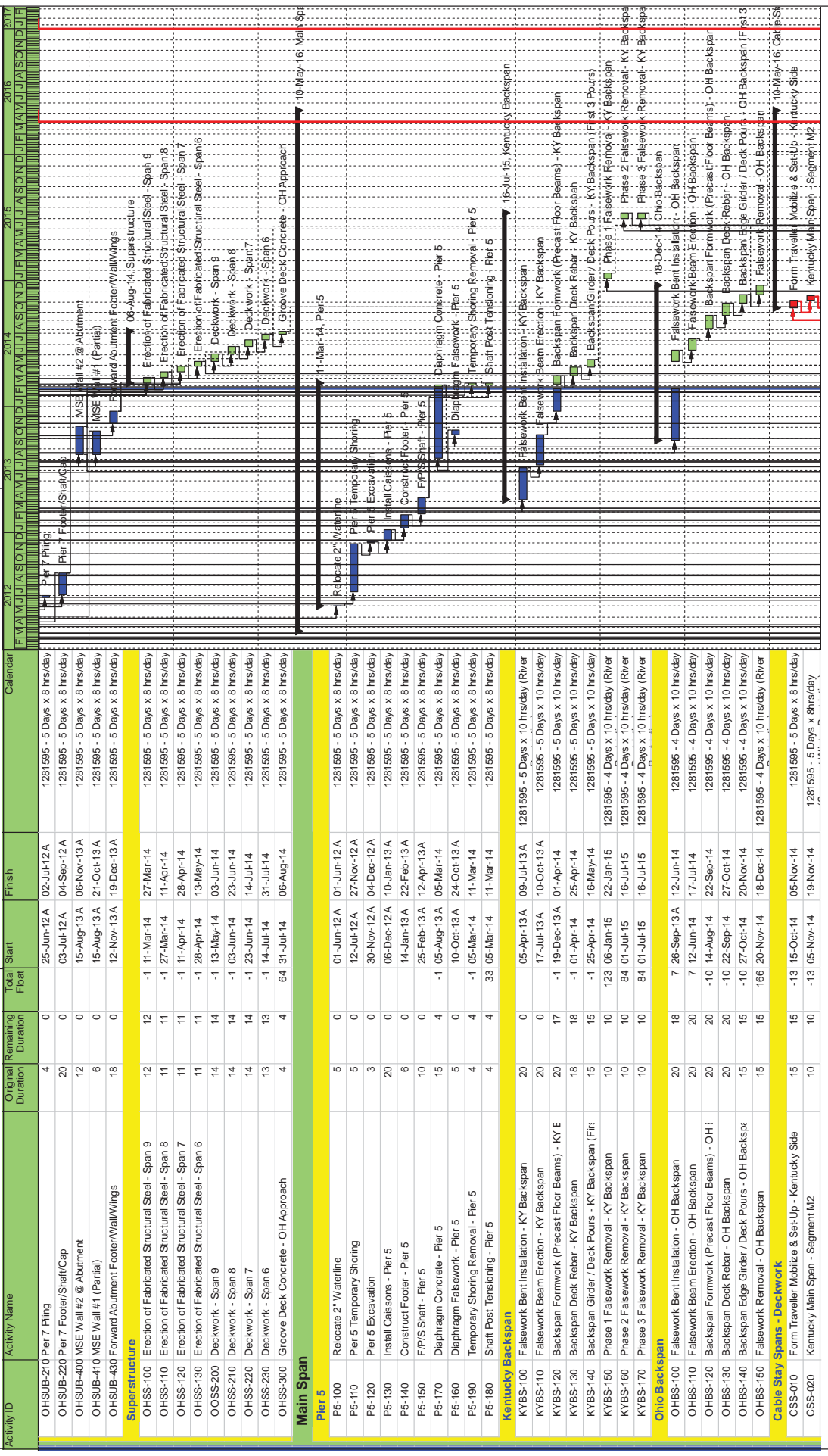
TASK Iter: All Activities

Page 2 of 9

Summary

Actual Work █ Critical Remaining Work █

Remaining Work █ Milestone ◆



Activity ID	Activity Name	Original Duration	Remaining Duration	Total Float	Start	Finish	Calendar
CSS-030	Kentucky Main Span - Segment M3	10	10	-13	19-Nov-14	05-Dec-14	1281595 - 5 Days x 8 hrs/day
CSS-040	Kentucky Main Span - Segment M4	10	10	-13	05-Dec-14	19-Dec-14	1281595 - 5 Days x 8 hrs/day
CSS-050	Kentucky Main Span - Segment M5	10	10	-13	19-Dec-14	06-Jan-15	1281595 - 5 Days x 8 hrs/day
CSS-060	Kentucky Main Span - Segment M6	10	10	-13	06-Jan-15	20-Jan-15	1281595 - 5 Days x 8 hrs/day
CSS-070	Kentucky Main Span - Segment M7	10	10	-13	20-Jan-15	03-Mar-15	1281595 - 5 Days x 8 hrs/day
CSS-080	Kentucky Main Span - Segment M8	10	10	-13	03-Mar-15	17-Mar-15	1281595 - 5 Days x 8 hrs/day
CSS-090	Kentucky Main Span - Segment M9	10	10	-13	17-Mar-15	31-Mar-15	1281595 - 5 Days x 8 hrs/day
CSS-100	Kentucky Main Span - Segment M10	10	10	-13	31-Mar-15	14-Apr-15	1281595 - 5 Days x 8 hrs/day
CSS-110	Kentucky Main Span - Segment M11	10	10	-13	14-Apr-15	28-Apr-15	1281595 - 5 Days x 8 hrs/day
CSS-120	Kentucky Main Span - Segment M12	9	9	-13	28-Apr-15	11-May-15	1281595 - 5 Days x 8 hrs/day
CSS-130	Kentucky Main Span - Segment M13	9	9	-13	11-May-15	22-May-15	1281595 - 5 Days x 8 hrs/day
CSS-140	Kentucky Main Span - Segment M14	9	9	-13	22-May-15	05-Jun-15	1281595 - 5 Days x 8 hrs/day
CSS-150	Kentucky Main Span - Segment M15	9	9	-13	05-Jun-15	18-Jun-15	1281595 - 5 Days x 8 hrs/day
CSS-160	Move & Reset Form Traveller on Ohio Main Span	18	18	-13	18-Jun-15	14-Jul-15	1281595 - 5 Days x 8 hrs/day
CSS-170	Ohio Main Span - Segment M17	9	9	-13	14-Jul-15	27-Jul-15	1281595 - 5 Days x 8 hrs/day
CSS-180	F/P/S - Parapet - Kentucky Approach	15	15	105	17-Jul-15	06-Aug-15	1281595 - 5 Days x 8 hrs/day
CSS-190	Ohio Main Span - Segment M18	9	9	-13	27-Jul-15	07-Aug-15	1281595 - 5 Days x 8 hrs/day
CSS-200	Ohio Main Span - Segment M19	9	9	-13	07-Aug-15	20-Aug-15	1281595 - 5 Days x 8 hrs/day
CSS-210	Ohio Main Span - Segment M20	9	9	-13	20-Aug-15	02-Sep-15	1281595 - 5 Days x 8 hrs/day
CSS-220	Ohio Main Span - Segment M21	9	9	-13	02-Sep-15	16-Sep-15	1281595 - 5 Days x 8 hrs/day
CSS-230	Ohio Main Span - Segment M22	9	9	-13	16-Sep-15	29-Sep-15	1281595 - 5 Days x 8 hrs/day
CSS-240	Ohio Main Span - Segment M23	9	9	-13	29-Sep-15	12-Oct-15	1281595 - 5 Days x 8 hrs/day
CSS-250	Ohio Main Span - Segment M24	9	9	-13	12-Oct-15	23-Oct-15	1281595 - 5 Days x 8 hrs/day
CSS-260	Ohio Main Span - Segment M25	9	9	-13	23-Oct-15	05-Nov-15	1281595 - 5 Days x 8 hrs/day
CSS-270	Ohio Main Span - Segment M26	9	9	-13	05-Nov-15	18-Nov-15	1281595 - 5 Days x 8 hrs/day
CSS-280	Ohio Main Span - Segment M27	9	9	-13	18-Nov-15	03-Dec-15	1281595 - 5 Days x 8 hrs/day
CSS-290	F/P/S - Parapet - Ohio Approach	15	15	69	03-Dec-15	16-Dec-15	1281595 - 5 Days x 8 hrs/day
CSS-300	Ohio Main Span - Segment M28	9	9	-13	03-Dec-15	16-Dec-15	1281595 - 5 Days x 8 hrs/day
CSS-310	Ohio Main Span - Segment M29	9	9	-13	16-Dec-15	30-Dec-15	1281595 - 5 Days x 8 hrs/day
CSS-320	Ohio Main Span - Segment M30	9	9	-13	30-Dec-15	13-Jan-16	1281595 - 5 Days x 8 hrs/day
CSS-330	Closure Pour	9	9	-13	13-Jan-16	26-Jan-16	1281595 - 5 Days x 8 hrs/day
CSS-340	F/P/S - Parapet - Main Span - Kentucky Side	14	14	-13	26-Jan-16	15-Feb-16	1281595 - 5 Days x 8 hrs/day
CSS-350	F/P/S - Parapet - Main Span - Ohio Side	14	14	-13	15-Feb-16	04-Mar-16	1281595 - 5 Days x 8 hrs/day
CSS-360	Final Restressing of Cable Stays	26	26	-13	04-Mar-16	11-Apr-16	1281595 - 5 Days x 8 hrs/day
CSS-370	Profilograph the Deck Concrete	2	2	-9	11-Apr-16	13-Apr-16	1281595 - 5 Days x 8 hrs/day
CSS-380	Install Main Span Expansion Joints	6	6	-13	11-Apr-16	19-Apr-16	1281595 - 5 Days x 8 hrs/day
CSS-390	Deck Overlay and Grooving	15	15	-13	19-Apr-16	10-May-16	1281595 - 5 Days x 8 hrs/day
Pier 4 Pylon							
P4-100	Install Templates - Pier 4	10	0	10	10-Oct-12A	26-Nov-12A	1281595 - 4 Days x 10 hrs/day (River)
P4-110	Install Caissons - Pier 4	15	0	10	10-Oct-12A	26-Nov-12A	1281595 - 4 Days x 10 hrs/day (River)
P4-120	Set Pier 4 Tub	10	0	29	Aug-13A	10-Oct-13A	1281595 - 4 Days x 10 hrs/day
P4-130	Submerge & Secure the Tub	5	0	10	10-Oct-13A	24-Oct-13A	1281595 - 4 Days x 10 hrs/day (River)
P4-140	Install the Followon from Pier 3 on Tub	10	0	05	Nov-13A	08-Nov-13A	1281595 - 4 Days x 10 hrs/day
P4-150	Pour/Cure Pier 4 Tremie Concrete	10	0	22	Nov-13A	29-Nov-13A	1281595 - 5 Days x 8 hrs/day
P4-160	De-water - Pier 4	5	0	29	Nov-13A	02-Dec-13A	1281595 - 4 Days x 10 hrs/day
P4-170	Construct Footer - Pier 4	10	10	-10	21-Feb-14	06-Mar-14	1281595 - 4 Days x 10 hrs/day
P4-180	Construct Segments 1 w/ Infill Wall - Pier 4	15	15	-10	06-Mar-14	02-Apr-14	1281595 - 4 Days x 10 hrs/day

TASK Iter: All Activities

Page 4 of 9

Data Date: 21-Feb-14

Summary

Actual Work Remaining Work Critical Remaining Work Milestone

Activity ID	Activity Name	Original Duration	Remaining Duration	Total Float	Start	Finish	Calendar
P4-410	Deliver Tower 4 Anchor Box	1	1	211	20-Mar-14	20-Mar-14	1281595 - 5 Days x 8 hrs/day
P4-190	Construct Segments 2 w/ Infill Wall + Cap - Pier 4	20	20	-10	02-Apr-14	07-May-14	1281595 - 4 Days x 10 hrs/day
P4-200	Flood Cofferdam & Remove Followover - Pier 4	3	3	8	07-May-14	12-May-14	1281595 - 5 Days x 10 hrs/day
P4-210	Segments 3 & 4 - Pier 4	16	16	-10	07-May-14	05-Jun-14	1281595 - 4 Days x 10 hrs/day
P4-220	Segment 5 - Pier 4	4	4	-10	05-Jun-14	12-Jun-14	1281595 - 4 Days x 10 hrs/day
P4-230	Segment 5 Strut Post Tensioning - Pier 4	2	2	-10	12-Jun-14	19-Jun-14	1281595 - 4 Days x 10 hrs/day
P4-235	Segment 5 Strut Post Tensioning - Pier 4	2	2	-10	19-Jun-14	24-Jun-14	1281595 - 4 Days x 10 hrs/day
P4-240	Pier Table Falsework - Pier 4	10	10	-10	24-Jun-14	10-Jul-14	1281595 - 4 Days x 10 hrs/day
P4-245	Construct Pier Table - Pier 4 (Includes Final Backst)	20	20	-10	10-Jul-14	14-Aug-14	1281595 - 4 Days x 10 hrs/day
P4-250	Segments 6 (Inc. Cure) - Pier 4	16	16	41	14-Aug-14	08-Sep-14	1281595 - 5 Days x 8 hrs/day
P4-260	Segments 7 (Inc. Cure) - Pier 4	10	10	-12	20-Nov-14	08-Dec-14	1281595 - 5 Days x 8 hrs/day
P4-255	Ladders / Platforms / Access Hatches - Segment 6	5	5	-12	08-Dec-14	15-Dec-14	1281595 - 5 Days x 8 hrs/day
P4-270	Segment 8 (Inc. Cure) - Pier 4	11	11	-12	15-Dec-14	31-Dec-14	1281595 - 5 Days x 8 hrs/day
P4-265	Ladders / Platforms / Access Hatches - Segment 7	5	5	-12	31-Dec-14	08-Jan-15	1281595 - 5 Days x 8 hrs/day
P4-280	Lower Cross Strut & Jacking - Pier 4	3	3	-10	31-Dec-14	06-Jan-15	1281595 - 5 Days x 8 hrs/day
P4-290	Segments 9, 10, & 11 (Inc. Cure) - Pier 4	15	15	-12	08-Jan-15	29-Jan-15	1281595 - 5 Days x 8 hrs/day
P4-285	Upper Cross Strut - Pier 4	3	3	-10	29-Jan-15	03-Feb-15	1281595 - 5 Days x 8 hrs/day
P4-275	Ladders / Platforms / Access Hatches - Segment 8	5	5	-12	29-Jan-15	05-Feb-15	1281595 - 5 Days x 8 hrs/day
P4-295	Ladders / Platforms / Access Hatches - Segments 9	3	3	-12	29-Jan-15	05-Feb-15	1281595 - 5 Days x 8 hrs/day
P4-300	Install Cable Box Sec #1 & Supports - Pier 4	3	3	-12	05-Feb-15	10-Feb-15	1281595 - 5 Days x 8 hrs/day
P4-310	Segments 12 & 13 (Inc. Cure) - Pier 4	10	10	-12	10-Feb-15	24-Feb-15	1281595 - 5 Days x 8 hrs/day
P4-315	Ladders / Platforms / Access Hatches - Segments 12	5	5	-12	24-Feb-15	03-Mar-15	1281595 - 5 Days x 8 hrs/day
P4-320	Install Cable Box Sec #2 - Pier 4	3	3	-12	03-Mar-15	06-Mar-15	1281595 - 5 Days x 8 hrs/day
P4-330	Install Temporary Supports Box Sec #2 - Pier 4	2	2	-12	03-Mar-15	06-Mar-15	1281595 - 5 Days x 8 hrs/day
P4-340	Jack Upper Cross Strut - Pier 4	2	2	-12	06-Mar-15	10-Mar-15	1281595 - 5 Days x 8 hrs/day
P4-350	Segments 14 & 15 (Inc. Cure) - Pier 4	10	10	-12	10-Mar-15	24-Mar-15	1281595 - 5 Days x 8 hrs/day
P4-355	Ladders / Platforms / Access Hatches - Segments 14	5	5	-12	24-Mar-15	31-Mar-15	1281595 - 5 Days x 8 hrs/day
P4-360	Cross Strut @ Segment 15 - Pier 4	3	3	-12	31-Mar-15	03-Apr-15	1281595 - 5 Days x 8 hrs/day
P4-365	Jack Upper Cross Strut - Pier 4	2	2	-12	03-Apr-15	07-Apr-15	1281595 - 5 Days x 8 hrs/day
P4-370	Install Cable Box Sec #3 - Pier 4	2	2	-12	07-Apr-15	09-Apr-15	1281595 - 5 Days x 8 hrs/day
P4-380	Segments 16, 17, & 18 (Inc. Cure) - Pier 4	15	15	-12	09-Apr-15	30-Apr-15	1281595 - 5 Days x 8 hrs/day
P4-385	Ladders / Platforms / Access Hatches - Segments 16	10	10	-12	30-Apr-15	14-May-15	1281595 - 5 Days x 8 hrs/day
P4-390	Remove Upper / Lower Cross Struts - Pier 4	3	3	-12	14-May-15	19-May-15	1281595 - 5 Days x 8 hrs/day
P4-400	Cable Stay Rigging - Pier 4	20	20	-12	19-May-15	17-Jun-15	1281595 - 5 Days x 8 hrs/day
Preliminary Work							
MSP-200	Kentucky Side - Access Road to River	15	0	19	Mar-12A	06-Apr-12A	1281595 - 5 Days x 8 hrs/day
MSP-300	Mussel Inspection Work / Mussel Relocation (Partial)	5	0	03	Apr-12A	17-Apr-12A	1281595 - 5 Days x 8 hrs/day (Mussel)
MSP-210	Install Sheet Piling - Kentucky Side	5	0	09	Apr-12A	13-Apr-12A	1281595 - 5 Days x 8 hrs/day
MSP-100	Ohio Side - Access Road to River	15	0	18	Apr-12A	01-May-12A	1281595 - 5 Days x 8 hrs/day
MSP-110	Ohio Side - Install Sheet Piling	4	0	07	May-12A	10-May-12A	1281595 - 5 Days x 10 hrs/day
MSP-400	Vibrate 2 Caissons to Rock	15	0	14	May-12A	10-Jun-12A	1281595 - 4 Days x 10 hrs/day
MSP-410	Complete Test Caisson Installation	5	0	11	Jul-12A	21-Jul-12A	1281595 - 4 Days x 10 hrs/day
MSP-420	Perform Caisson Tests	10	0	26	Jul-12A	27-Jul-12A	1281595 - 4 Days x 10 hrs/day
Pier 2							
P2-110	Install Caisson Templates - Pier 2	2	0	07	Sep-12A	28-Sep-12A	1281595 - 5 Days x 10 hrs/day
P2-120	Install Caissons - Pier 2	20	0	07	Sep-12A	10-Oct-12A	1281595 - 5 Days x 10 hrs/day
P2-100	Assemble Wale Set on Deck Barge	5	0	05	Oct-12A	30-Nov-12A	1281595 - 4 Days x 10 hrs/day (River)

TASK Iter: All Activities

Page 5 of 9

Summary

Actual Work Remaining Work Milestone

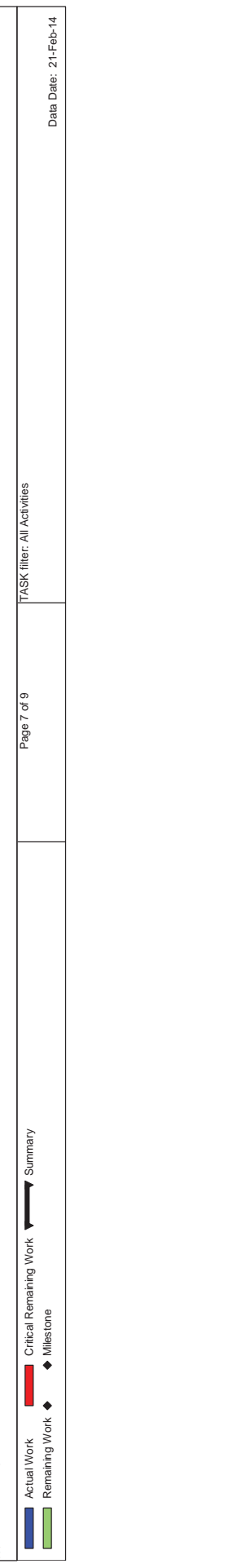
Activity ID	Activity Name	Original Duration	Remaining Duration	Total Float	Start	Finish	Calendar
P2-150	Excavate as Req'd for Tremie - Pier 2	6	0		19-Nov-12A	26-Nov-12A	1281595 - 4 Days x 10 hrs/day
P2-130	Drive Spuds and Set Wale	2	0		03-Dec-12A	07-Dec-12A	1281595 - 4 Days x 10 hrs/day (River)
P2-140	Install Sheet Pile - Pier 2	8	0		10-Dec-12A	16-Jan-13A	1281595 - 4 Days x 10 hrs/day (River)
P2-141	December 2012 Flooding Delay - Pier 2	1	0		11-Dec-12A	17-Dec-12A	1281595 - 7 Days (no Holidays)
P2-142	January 2013 Flooding Delay - Pier 2	6	0		17-Jan-13A	21-Jan-13A	1281595 - 7 Days (no Holidays)
P2-160	Prep & Pour Tremie - Pier 2	4	0		22-Jan-13A	30-Jan-13A	1281595 - 5 Days x 10 hrs/day
P2-170	Dewater & Remove Latience - Pier 2	4	0		04-Feb-13A	22-Feb-13A	1281595 - 5 Days x 10 hrs/day
P2-180	Construct Footer - Pier 2	10	0		23-Feb-13A	19-Mar-13A	1281595 - 5 Days x 10 hrs/day
P2-190	Pier 2 - 1st Shaft Lift	12	0		25-Mar-13A	12-Apr-13A	1281595 - 5 Days x 10 hrs/day
P2-200	Pier 2 - 2nd Shaft Lift	10	0		22-Apr-13A	07-May-13A	1281595 - 5 Days x 10 hrs/day
P2-230	Diaphragm Concrete - Pier 2	15	0		24-May-13A	21-Aug-13A	1281595 - 5 Days x 10 hrs/day
P2-210	Diaphragm Falsework - Pier 2	5	0		31-May-13A	11-Jun-13A	1281595 - 5 Days x 10 hrs/day
P2-240	Shaft Post Tensioning - Pier 2	5	5	-1	21-Feb-14	27-Feb-14	1281595 - 5 Days x 10 hrs/day
P2-220	Remove Sheet Pile & Wale Set	10	10	1	21-Feb-14	06-Mar-14	1281595 - 4 Days x 10 hrs/day (River)
Pier 3 Pylon							
P3-100	Install Templates - Pier 3	10	0		23-Jul-12A	30-Aug-12A	1281595 - 5 Days x 10 hrs/day (River)
P3-110	Install Caissons - Pier 3	15	0		07-Sep-12A	07-Sep-12A	1281595 - 5 Days x 10 hrs/day (River)
P3-120	Set Pier 3 Tub	10	0		07-Sep-12A	26-Oct-12A	1281595 - 5 Days x 10 hrs/day
P3-130	Submerge & Secure the Tub	5	0		29-Oct-12A	29-Nov-12A	1281595 - 5 Days x 10 hrs/day (River)
P3-140	Install the Pile Follower	15	0		30-Nov-12A	15-Jan-13A	1281595 - 5 Days x 10 hrs/day (River)
P3-141	December 2012 Flooding Delay - Pier 3	1	0		11-Dec-12A	16-Dec-12A	1281595 - 7 Days (no Holidays)
P3-142	Repair Work from December 2012 Flooding - Pier 3	1	0		17-Dec-12A	04-Jan-13A	1281595 - 5 Days x 8 hrs/day
P3-150	Pour Cure Pier 3 Tremie Concrete	10	0		16-Jan-13A	23-Jan-13A	1281595 - 5 Days x 10 hrs/day (River)
P3-151	January 2013 Flooding Delay - Pier 3	7	0		17-Jan-13A	22-Jan-13A	1281595 - 7 Days (no Holidays)
P3-152	Repair Damage from January 2013 Flooding Delay	28	0		23-Jan-13A	01-Mar-13A	1281595 - 5 Days x 8 hrs/day
P3-153	Continue Repair of 2012/2013 Flooding Damage - Pier 3	16	0		01-Mar-13A	22-Mar-13A	1281595 - 5 Days x 8 hrs/day
P3-160	Dewater - Pier 3	5	0		25-Mar-13A	05-Apr-13A	1281595 - 5 Days x 10 hrs/day (River)
P3-170	Construct Footer - Pier 3	10	0		08-Apr-13A	10-May-13A	1281595 - 5 Days x 10 hrs/day
P3-171	April 2013 Repair work - Pier 3	2	0		26-Apr-13A	29-Apr-13A	1281595 - 5 Days x 8 hrs/day
P3-180	Construct Segments 1 & Infill Wall - Pier 3	15	0		13-May-13A	27-Jun-13A	1281595 - 5 Days x 10 hrs/day
P3-200	Flood Cofferdam & Remove Follower - Pier 3	3	0		01-Jul-13A	15-Jul-13A	1281595 - 5 Days x 10 hrs/day
P3-190	Construct Segments 2 & Infill Wall + Cap - Pier 3	20	0		16-Jul-13A	19-Aug-13A	1281595 - 5 Days x 10 hrs/day
P3-210	Segments 3 & 4 - Pier 3	16	0		20-Aug-13A	11-Oct-13A	1281595 - 5 Days x 10 hrs/day
P3-220	Segment 5 - Pier 3	4	0		05-Nov-13A	13-Jan-14A	1281595 - 4 Days x 10 hrs/day
P3-230	Segment 5 Strut - Pier 3	4	0		05-Nov-13A	13-Jan-14A	1281595 - 4 Days x 10 hrs/day
P3-420	Demob Causeway Due to High Water/Current Event	8	0		06-Dec-13A	06-Dec-13A	1281595 - 5 Days x 8 hrs/day
P3-440	Remob Causeway Due to High Water/Current Event	1	0		17-Dec-13A	17-Dec-13A	1281595 - 5 Days x 8 hrs/day
P3-450	Demob Causeway Due to High Water/Current Event	1	0		23-Dec-13A	23-Dec-13A	1281595 - 5 Days x 8 hrs/day
P3-460	Work Shut Down Due to High Water/Current Event	8	0		23-Dec-13A	03-Jan-14A	1281595 - 5 Days x 8 hrs/day
P3-470	Remob Causeway Due to High Water/Current Event	1	0		03-Jan-14A	03-Jan-14A	1281595 - 5 Days x 8 hrs/day
P3-250	Segments 6 (Inc. Cure) - Pier 3	16	5	-12	23-Jan-14A	26-Feb-14	1281595 - 5 Days x 8 hrs/day
P3-235	Strut Post Tensioning - Pier 3	2	2	6	21-Feb-14	24-Feb-14	1281595 - 4 Days x 10 hrs/day
P3-260	Segments 7 (Inc. Cure) - Pier 3	10	10	-12	26-Feb-14	12-Mar-14	1281595 - 5 Days x 8 hrs/day
P3-255	Ladders / Platforms / Access Hatches - Segment 6	5	5	-12	12-Mar-14	19-Mar-14	1281595 - 5 Days x 8 hrs/day
P3-270	Segment 8 (Inc. Cure) - Pier 3	11	11	-12	19-Mar-14	03-Apr-14	1281595 - 5 Days x 8 hrs/day
P3-410	Deliver Tower 3 Anchor Box	1	1	40	20-Mar-14	20-Mar-14	1281595 - 5 Days x 8 hrs/day



TASK Iter: All Activities

█ Actual Work
 █ Remaining Work
 ◆ Critical Remaining Work
 ◆ Milestone

Activity ID	Activity Name	Original Duration	Remaining Duration	Total Float	Start	Finish
P3-280	Lower Cross Strut & Jacking - Pier 3	3	3	0	03-Apr-14	08-Apr-14
P3-285	Ladders / Platforms / Access Hatches - Segment 7	5	5	-12	03-Apr-14	10-Apr-14
P3-290	Segments 9, 10 & 11 (Inc. Cure) - Pier 3	15	15	0	10-Apr-14	01-May-14
P3-240	Pier Table Falsework - Pier 3	10	10	-10	10-Apr-14	29-Apr-14
P3-245	Construct Pier Table - Pier 3 (Includes Final Backst	20	20	-10	29-Apr-14	04-Jun-14
P3-285	Upper Cross Strut - Pier 3	3	3	0	01-May-14	06-May-14
P3-275	Ladders / Platforms / Access Hatches - Segment 8	5	5	1	01-May-14	08-May-14
P3-295	Ladders / Platforms / Access Hatches - Segments 9, 10 & 11 (Inc. Cure) - Pier 3	5	5	1	08-May-14	15-May-14
P3-300	Install Cable Box Sec #1 & Supports - Pier 3	3	3	-13	04-Jun-14	09-Jun-14
P3-310	Segments 12 & 13 (Inc. Cure) - Pier 3	10	10	-13	09-Jun-14	23-Jun-14
P3-315	Ladders / Platforms / Access Hatches - Segments 12 & 13 (Inc. Cure) - Pier 3	5	5	-13	23-Jun-14	30-Jun-14
P3-320	Install Temporary Supports Box Sec #2 - Pier 3	3	3	-13	30-Jun-14	03-Jul-14
P3-330	Install Cable Box Sec #2 - Pier 3	2	2	-12	30-Jun-14	02-Jul-14
P3-340	Jack Upper Cross Strut - Pier 3	2	2	-13	03-Jul-14	08-Jul-14
P3-350	Segments 14 & 15 (Inc. Cure) - Pier 3	10	10	-13	08-Jul-14	22-Jul-14
P3-355	Ladders / Platforms / Access Hatches - Segments 14 & 15 (Inc. Cure) - Pier 3	5	5	-13	22-Jul-14	29-Jul-14
P3-360	Cross Strut @ Segment 15 - Pier 3	3	3	-13	29-Jul-14	01-Aug-14
P3-365	Jack Upper Cross Strut - Pier 3	2	2	-13	01-Aug-14	05-Aug-14
P3-370	Install Cable Box Sec #3 - Pier 3	2	2	-13	05-Aug-14	07-Aug-14
P3-380	Segments 16, 17, & 18 (Inc. Cure) - Pier 3	15	15	-13	07-Aug-14	28-Aug-14
P3-385	Ladders / Platforms / Access Hatches - Segment 16, 17, & 18 (Inc. Cure) - Pier 3	10	10	-13	28-Aug-14	12-Sep-14
P3-390	Remove Upper / Lower Cross Struts - Pier 3	3	3	-13	12-Sep-14	17-Sep-14
P3-400	Cable Stay Rigging - Pier 3	20	20	-13	17-Sep-14	15-Oct-14
Roadway, Drainage and Traffic						
Lighting						
LIGHT-100	Lighting - Kentucky Approach	10	10	172	07-Aug-15	20-Aug-15
LIGHT-110	Lighting - Ohio Approach	10	10	76	24-Dec-15	11-Jan-16
LIGHT-120	Lighting - Bridge	10	10	27	04-Mar-16	18-Mar-16
Seeding and Re-Vegetation						
SV-110	Seeding & Landscaping - Ohio Approach	5	5	496	07-May-14	13-May-14
SV-100	Seeding & Landscaping - Kentucky Approach	5	5	459	30-Jun-14	07-Jul-14
Ohio Roadway and Drainage						
OHRW-100	Clearing & Grubbing - Ohio Side	5	0	0	01-Mar-12A	22-Mar-12A
OHRW-230	Phase 3 Work - Relocate Waterlines & Sanitary Sew	20	0	420	20-Aug-12A	10-Mar-14
OHRW-190	Phase 1c Work - Drainage Work	5	0	0	28-Sep-12A	30-Nov-12A
OHRW-140	Phase 1b Work - Prep Work & Traffic Reconfiguration	2	0	0	03-Oct-12A	03-Oct-12A
OHRW-180	Phase 1c Work - Prep Work & Traffic Reconfiguration	2	0	0	03-Oct-12A	03-Oct-12A
OHRW-120	Phase 1a Work - Prep Work & Traffic Reconfiguration	2	0	0	03-Oct-12A	03-Oct-12A
OHRW-170	Phase 1b Work - 12" Pipe Run Under Campbell Ave.	10	0	0	12-Oct-12A	30-Nov-12A
OHRW-110	Phase 2 Work - Underground Tank Removal	20	0	0	05-Nov-12A	07-Nov-12A
OHRW-130	Phase 1a Work - 36" & 30" Pipe	20	0	0	19-Dec-12A	29-Jan-13A
OHRW-150	Phase 1b Work - Jefferson St. & Campbell Ave. Re	15	0	0	14-Jan-13A	15-Feb-13A
OHRW-160	Phase 1b Work - Reconstruct Campbell Ave & Jeff	10	2	8	11-Feb-13A	22-Feb-14
OHRW-200	Phase 1c Work - Reconstruct Campbell Ave & Jeff	10	2	4	11-Feb-13A	03-Mar-14
OHRW-210	Phase 2 Work - Prep Work & Traffic Reconfiguration	5	0	0	11-Mar-13A	11-Mar-13A
OHRW-240	Phase 2 Work - Jefferson St. / 3rd St. Intersection	15	0	0	13-Mar-13A	20-May-13A



TASK Iter: All Activities

Page 7 of 9

Summary

Critical Remaining Work

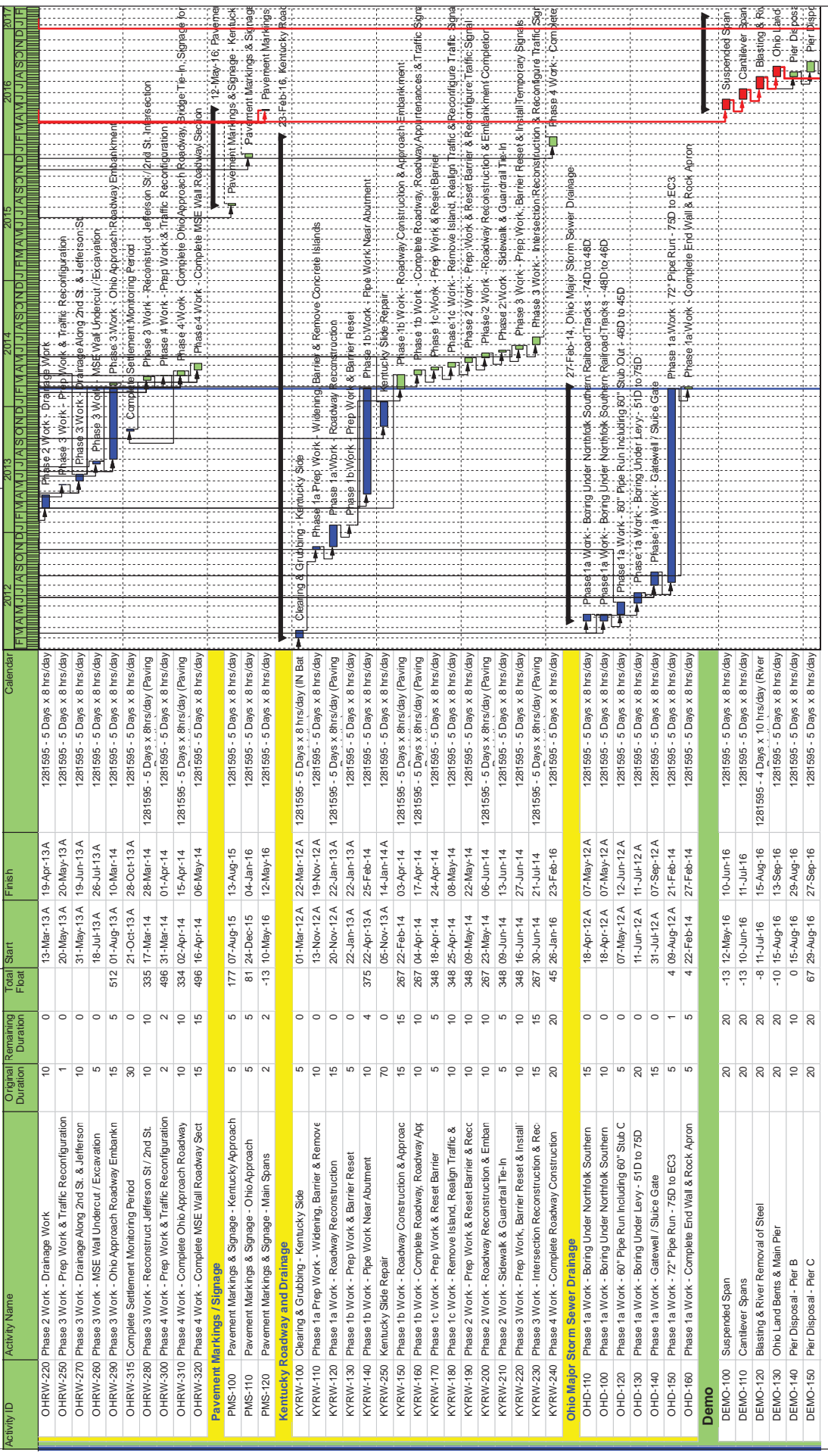
Remaining Work

Milestone

Actual Work

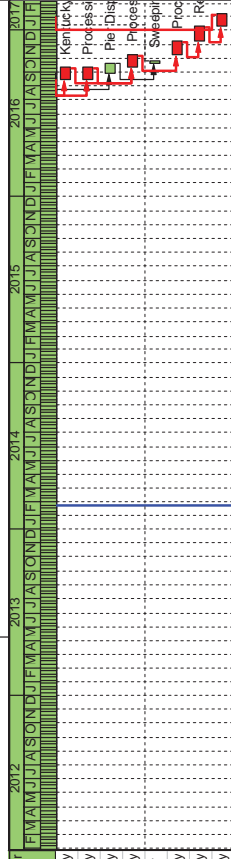
Legend

Data Date: 21-Feb-14



Activity ID	Activity Name	Original Duration	Remaining Duration	Total Float	Start	Finish
OHRW-220	Phase 2 Work - Drainage Work	10	0	0	13-Mar-13A	19-Apr-13A
OHRW-250	Phase 3 Work - Prep Work & Traffic Reconfiguration	1	0	0	20-May-13A	20-May-13A
OHRW-270	Phase 3 Work - Drainage Along 2nd St. & Jefferson	10	0	0	31-May-13A	19-Jun-13A
OHRW-260	Phase 3 Work - MSE Wall Undercut / Excavation	5	0	0	18-Jul-13A	26-Jul-13A
OHRW-290	Phase 3 Work - Ohio Approach Roadway Embankment	15	5	512	01-Aug-13A	10-Mar-14
OHRW-315	Complete Settlement Monitoring Period	30	0	0	21-Oct-13A	28-Oct-13A
OHRW-300	Phase 3 Work - Reconstruct Jefferson St / 2nd St.	10	10	335	17-Mar-14	28-Mar-14
OHRW-280	Phase 4 Work - Prep Work & Traffic Reconfiguration	2	2	496	31-Mar-14	01-Apr-14
OHRW-310	Phase 4 Work - Complete Ohio Approach Roadway	10	10	334	02-Apr-14	15-Apr-14
OHRW-320	Phase 4 Work - Complete MSE Wall Roadway Sect	15	15	496	16-Apr-14	06-May-14
Pavement Markings / Signage						
PMS-100	Pavement Markings & Signage - Kentucky Approach	5	5	177	07-Aug-15	13-Aug-15
PMS-110	Pavement Markings & Signage - Ohio Approach	5	5	81	24-Dec-15	04-Jan-16
PMS-120	Pavement Markings & Signage - Main Spans	2	2	-13	10-May-16	12-May-16
Kentucky Roadway and Drainage						
KYRW-100	Clearing & Grubbing - Kentucky Side	5	0	0	01-Mar-12A	22-Mar-12A
KYRW-110	Phase 1a Prep Work - Widening, Barrier & Removal	10	0	13	11-Nov-12A	19-Nov-12A
KYRW-120	Phase 1a Work - Roadway Reconstruction	15	0	0	20-Nov-12A	22-Jan-13A
KYRW-130	Phase 1b Work - Prep Work & Barrier Reset	5	0	0	22-Jan-13A	22-Jan-13A
KYRW-140	Phase 1b Work - Pipe Work Near Abutment	10	4	375	22-Apr-13A	25-Feb-14
KYRW-200	Kentucky Side Repair	70	0	0	05-Nov-13A	14-Jan-14A
KYRW-150	Phase 1b Work - Roadway Construction & Approach	15	15	267	22-Feb-14	03-Apr-14
KYRW-160	Phase 1c Work - Complete Roadway, Roadway Apr	10	10	267	04-Apr-14	17-Apr-14
KYRW-170	Phase 1c Work - Prep Work & Reset Barrier	5	5	348	18-Apr-14	24-Apr-14
KYRW-180	Phase 1c Work - Remove Island, Realign Traffic &	10	10	348	25-Apr-14	08-May-14
KYRW-190	Phase 2 Work - Prep Work & Reset Barrier & Rec	10	10	348	09-May-14	22-May-14
KYRW-210	Phase 2 Work - Roadway Reconstruction & Emban	10	10	267	23-May-14	06-Jun-14
KYRW-220	Phase 2 Work - Sidewalk & Guardrail Tie-In	5	5	348	09-Jun-14	13-Jun-14
KYRW-230	Phase 3 Work - Prep Work, Barrier Reset & Install	10	10	348	16-Jun-14	27-Jun-14
KYRW-240	Phase 3 Work - Intersection Reconstruction & Rec	15	15	267	30-Jun-14	21-Jul-14
KYRW-250	Phase 4 Work - Complete Roadway Construction	20	20	45	26-Jan-16	23-Feb-16
Ohio Major Storm Sewer Drainage						
OHD-110	Phase 1a Work - Boring Under Northlok Southern	15	0	0	18-Apr-12A	07-May-12A
OHD-100	Phase 1a Work - Boring Under Northlok Southern	10	0	0	18-Apr-12A	07-May-12A
OHD-120	Phase 1a Work - 60" Pipe Run Including 60" Sub C	5	0	0	07-May-12A	12-Jun-12A
OHD-130	Phase 1a Work - Boring Under Levy - 51D to 75D	20	0	0	11-Jun-12A	11-Jul-12A
OHD-140	Phase 1a Work - Gatewell / Sluice Gate	15	0	0	31-Jul-12A	07-Sep-12A
OHD-150	Phase 1a Work - 72" Pipe Run - 75D to EC3	5	1	4	09-Aug-12A	21-Feb-14
OHD-160	Phase 1a Work - Complete End Wall & Rock Apron	5	5	4	22-Feb-14	27-Feb-14
Demo						
DEMO-100	Suspended Span	20	20	-13	12-May-16	10-Jun-16
DEMO-110	Canilever Spans	20	20	-13	10-Jun-16	11-Jul-16
DEMO-120	Blasting & River Removal of Steel	20	20	-8	11-Jul-16	15-Aug-16
DEMO-130	Ohio Land Benits & Main Pier	20	20	-10	15-Aug-16	13-Sep-16
DEMO-140	Pier Disposal - Pier B	10	10	0	15-Aug-16	29-Aug-16
DEMO-150	Pier Disposal - Pier C	20	20	67	29-Aug-16	27-Sep-16

Activity ID	Activity Name	Original Duration	Remaining Duration	Total Float	Start	Finish	Calendar
DEMO-160	Kentucky Bents & Main Pier	20	20	-10	13-Sep-16	11-Oct-16	1281595 - 5 Days x 8 hrs/day
DEMO-170	Processing Concrete - Ohio Bents & Main Pier	20	20	-10	13-Sep-16	11-Oct-16	1281595 - 5 Days x 8 hrs/day
DEMO-180	Pier Disposal - Pier D	16	16	67	27-Sep-16	19-Oct-16	1281595 - 5 Days x 8 hrs/day
DEMO-190	Processing Concrete - Kentucky Bents & Main Pier	20	20	-10	11-Oct-16	08-Nov-16	1281595 - 5 Days x 8 hrs/day
DEMO-210	Sweeping River	4	4	54	19-Oct-16	26-Oct-16	1281595 - 4 Days x 10 hrs/day (River)
DEMO-220	Processing Concrete - Main Span Piers	20	20	-10	08-Nov-16	08-Dec-16	1281595 - 5 Days x 8 hrs/day
DEMO-200	Reconstruct KY Local Streets & Sidewalks	20	20	-10	08-Dec-16	09-Jan-17	1281595 - 5 Days x 8 hrs/day
DEMO-230	Reconstruct OH Local streets & Sidewalks	20	20	-10	09-Jan-17	06-Feb-17	1281595 - 5 Days x 8 hrs/day



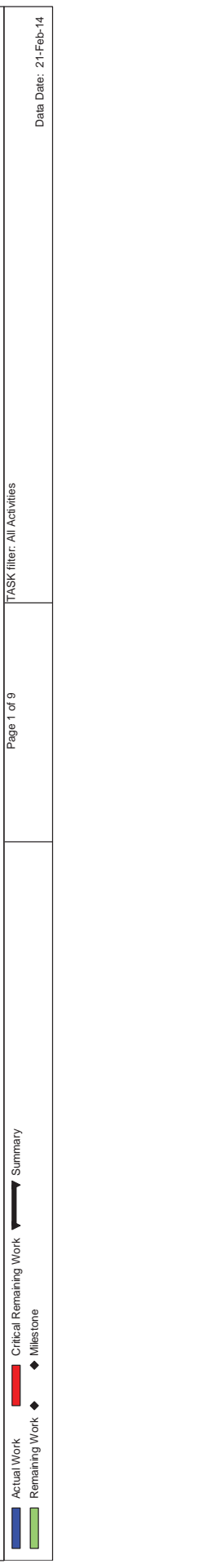
Actual Work Critical Remaining Work Summary Remaining Work Milestone

TASK filter: All Activities

Page 9 of 9

Data Date: 21-Feb-14

Activity ID	Activity Name	Original Duration	Remaining Duration	Total Float	Start	Finish
General						
Fabrication						
FAB-120	Prefabricate Wale Set for Pier 2 (Offsite)	16	0	0	02-Apr-12A	23-Apr-12A
FAB-100	Prefabricate Pier 3 Tub	15	0	0	11-Jun-12A	27-Jun-12A
FAB-130	Fabricate Initial Post Tensioning Material	35	0	0	13-Aug-12A	03-Dec-12A
FAB-150	Fabricate Form Traveler	60	0	0	01-Apr-13A	30-Apr-13A
FAB-160	Fabricate Initial Precast Floorbeams	40	0	0	17-May-13A	30-Sep-13A
FAB-110	Prefabricate Pier 4 Tub	15	0	0	25-Jun-13A	29-Aug-13A
FAB-170	Fabricate Initial Precast Anchor Blocks	40	0	0	26-Aug-13A	18-Nov-13A
FAB-180	Fabricate Tower 384 Anchor Box	40	0	20	02-Sep-13A	19-Mar-14
FAB-140	Fabricate Initial Stay Cable Material	60	60	74	21-Feb-14	14-May-14
Approvals						
R/A-510	R/A - Pier 5 Temporary Shoring	15	0	0	13-Feb-12A	02-Jun-12A
R/A-100	R/A - Ohio River - Kentucky Side - Access Bulkhead	30	0	0	13-Feb-12A	13-Mar-12A
R/A-140	R/A - Ohio River - Ohio Side - Access Bulkhead	30	0	0	13-Feb-12A	13-Mar-12A
R/A-330	R/A - ERCP - Emergency Response & Contingency	30	0	0	14-Feb-12A	30-Mar-12A
R/A-320	R/A - SSHSP - Site Specific Health & Safety Plan	30	0	0	15-Feb-12A	17-Feb-12A
R/A-110	R/A - 404 Permit Modifications	30	0	0	16-Feb-12A	16-Mar-12A
R/A-120	R/A - SWPPP & Environmental	30	0	0	17-Feb-12A	28-Mar-12A
R/A-130	R/A - Mussel Relocation	30	0	0	17-Feb-12A	15-May-12A
R/A-530	R/A - Stay Cable Material and Testing Submittal	30	0	0	22-Feb-12A	10-May-12A
R/A-300	R/A - Caisson Plan (Inc. Test Caissons)	30	0	0	09-Mar-12A	26-Mar-12A
R/A-340	R/A - Jack & Bore Stormwater Drainage @ RR	30	0	0	12-Mar-12A	16-Apr-12A
R/A-400	R/A - Various Concrete OSC Mix/Testing	10	0	0	14-Mar-12A	24-Apr-12A
R/A-200	R/A - OPM Baseline Schedule Approval	21	0	0	20-Mar-12A	29-Jun-12A
R/A-420	R/A - Mass Concrete Plans	10	0	0	26-Mar-12A	30-Mar-12A
R/A-500	R/A - MSE Wall Stop Drawings (Exc. Mural)	15	0	0	04-May-12A	18-Jul-12A
R/A-310	R/A - Underground Tank Removal	30	0	0	02-May-12A	18-Sep-12A
R/A-520	R/A - Post Tensioning Material and Testing	60	0	0	22-May-12A	07-May-13A
R/A-540	R/A - Main Span Construction Analysis and Dwg's	30	0	0	02-Jul-12A	24-Sep-12A
R/A-550	R/A - Geometry Control	30	15	-1	11-Jun-13A	07-Mar-14
R/A-410	R/A - Miscellaneous QA/QC Concrete/Sol Compac	7	7	10	21-Feb-14	27-Feb-14
Milestones						
MIL-100	Start Project	0	0	0	03-Feb-12A	
MIL-200	Open Bridge to Traffic	0	0	-24	19-May-16*	
MIL-300	End Project	0	0	-22	23-Feb-17*	
Mobilization						
MOB-130	Pre-Construction Meeting	1	0	0	21-Feb-12A	21-Feb-12A
MOB-100	Mobilization - Phase 1	20	0	0	22-Feb-12A	20-Mar-12A
MOB-110	ODOT Field Office Set-Up	15	0	0	01-Mar-12A	09-Mar-12A
MOB-120	Bryman Field Office Set-Up	15	0	0	12-Mar-12A	21-Mar-12A
MOB-105	Mobilization - Phase 2	20	0	0	20-Mar-12A	16-Apr-12A
MOB-140	De-Mob and Punch List Items	8	8	-16	14-Feb-17	23-Feb-17
Submittals						
SUB-510	Pier 5 Temporary Shoring Submittal	1	0	0	07-Feb-12A	07-Feb-12A



Activity ID	Activity Name	Original Duration	Remaining Duration	Total Float	Start	Finish	Calendar	2012	2013	2014	2015	2016	2017
SUB-300	Initial Workplan & Safety Submittals	1	0	0	13-Feb-12A	13-Feb-12A	1281595 - 5 Days x 8 hrs/day						
SUB-100	Environmental Submittals	1	0	0	14-Feb-12A	14-Feb-12A	1281595 - 5 Days x 8 hrs/day						
SUB-400	Initial Material Submittals	1	0	0	20-Mar-12A	20-Mar-12A	1281595 - 5 Days x 8 hrs/day						
SUB-200	CPW Baseline Schedule Submittal	14	0	0	20-Mar-12A	20-Mar-12A	1281595 - 5 Days x 8 hrs/day						
SUB-500	MSE Wall Shop Drawing Submittal	1	0	0	12-Apr-12A	12-Apr-12A	1281595 - 5 Days x 8 hrs/day						
SUB-530	Stay Cable Material and Testing Submittal	1	0	0	10-May-12A	10-May-12A	1281595 - 5 Days x 8 hrs/day						
SUB-520	Post Tensioning Material and Testing Submittal	1	0	0	21-May-12A	21-May-12A	1281595 - 5 Days x 8 hrs/day						
SUB-540	Main Span Construction Analysis and Dwg's Submit	1	0	0	02-Jul-12A	02-Jul-12A	1281595 - 5 Days x 8 hrs/day						
SUB-550	Geometry Control Submittal	1	0	0	10-Jun-13A	10-Jun-13A	1281595 - 5 Days x 8 hrs/day						
Kentucky Approach													
Substructure													
KYSS-100	Erection of Fabricated Structural Steel - Span 1	8	0	0	29-Jul-13A	09-Aug-13A	1281595 - 5 Days x 10 hrs/day						
KYSS-110	Erection of Fabricated Structural Steel - Span 2	15	0	0	30-Aug-13A	13-Sep-13A	1281595 - 5 Days x 10 hrs/day						
KYSS-200	Deckwork - Span 1	13	0	0	16-Sep-13A	28-Oct-13A	1281595 - 5 Days x 10 hrs/day						
KYSS-210	Deckwork - Span 2	14	0	0	30-Sep-13A	20-Nov-13A	1281595 - 5 Days x 10 hrs/day						
KYSS-300	Groove Deck Concrete - KY Approach	2	2	525	06-Mar-14	10-Mar-14	1281595 - 5 Days x 8 hrs/day						
Substructure													
KYSS-300	Pier 1 Caissons	10	0	0	28-Mar-12A	18-Apr-12A	1281595 - 5 Days x 8 hrs/day						
KYSS-110	Abutment/Wing Soil Excavation	5	0	0	16-Apr-12A	06-Feb-13A	1281595 - 5 Days x 8 hrs/day						
KYSS-120	Abutment/Wing Rock Excavation	5	0	0	16-Apr-12A	06-Feb-13A	1281595 - 5 Days x 8 hrs/day						
KYSS-130	Abutment Caissons	10	0	0	20-Apr-12A	04-May-12A	1281595 - 5 Days x 8 hrs/day						
KYSS-310	Pier 1 Shaft/Cap	20	0	0	25-Apr-12A	22-Jun-12A	1281595 - 5 Days x 8 hrs/day						
KYSS-140	Abutment Concrete - Form	10	0	0	02-May-12A	04-Oct-12A	1281595 - 5 Days x 8 hrs/day						
KYSS-220	Wingwall#2 Concrete - Form	5	0	0	22-Jun-12A	04-Apr-13A	1281595 - 5 Days x 8 hrs/day						
KYSS-230	Wingwall#2 Concrete - Pour	2	0	0	27-Jun-12A	05-Apr-13A	1281595 - 5 Days x 8 hrs/day						
KYSS-180	Wingwall#1 Concrete - Form	5	0	0	06-Aug-12A	21-Feb-13A	1281595 - 5 Days x 8 hrs/day						
KYSS-100	Pipe Work @ Abutment & Near RR	10	0	0	08-Aug-12A	10-Aug-12A	1281595 - 5 Days x 8 hrs/day						
KYSS-190	Wingwall#1 Concrete - Pour	2	0	0	20-Aug-12A	25-Feb-13A	1281595 - 5 Days x 8 hrs/day						
KYSS-160	Abutment Concrete - Pour	2	0	0	05-Oct-12A	05-Oct-12A	1281595 - 5 Days x 8 hrs/day						
KYSS-160	Abutment Concrete - Cure	7	0	0	06-Oct-12A	11-Oct-12A	1281595 - 7 Days (no Holidays)						
KYSS-170	Abutment Concrete - Strip	3	0	0	12-Oct-12A	16-Oct-12A	1281595 - 5 Days x 8 hrs/day						
KYSS-200	Wingwall#1 Concrete - Cure	7	0	0	01-Mar-13A	15-Mar-13A	1281595 - 7 Days (no Holidays)						
KYSS-240	Wingwall#2 Concrete - Cure	7	0	0	08-Apr-13A	14-Apr-13A	1281595 - 7 Days (no Holidays)						
KYSS-210	Wingwall#1 Concrete - Strip	3	0	0	15-Apr-13A	22-Apr-13A	1281595 - 5 Days x 8 hrs/day						
KYSS-250	Wingwall#2 Concrete - Strip	3	0	0	15-Apr-13A	22-Apr-13A	1281595 - 5 Days x 8 hrs/day						
KYSS-260	Backfill @ Abutment & Wingwalls	5	0	0	16-Apr-13A	26-Jun-13A	1281595 - 5 Days x 8 hrs/day						
Ohio Approach													
Substructure													
OHSUB-300	Pier 8 Excavation	2	0	0	25-Apr-12A	27-Apr-12A	1281595 - 5 Days x 8 hrs/day						
OHSUB-310	Pier 8 Piling	5	0	0	27-Apr-12A	17-May-12A	1281595 - 5 Days x 8 hrs/day						
OHSUB-320	Pier 8 Footer/Shaft/Cap	15	0	0	21-May-12A	17-Jul-12A	1281595 - 5 Days x 8 hrs/day						
OHSUB-420	Forward Abutment Piling	5	0	0	07-Jun-12A	12-Jun-12A	1281595 - 5 Days x 8 hrs/day						
OHSUB-100	Pier 6 Excavation	2	0	0	11-Jun-12A	12-Jun-12A	1281595 - 5 Days x 8 hrs/day						
OHSUB-110	Pier 6 Piling	4	0	0	14-Jun-12A	20-Jun-12A	1281595 - 5 Days x 8 hrs/day						
OHSUB-200	Pier 7 Excavation	2	0	0	20-Jun-12A	21-Jun-12A	1281595 - 5 Days x 8 hrs/day						
OHSUB-120	Pier 6 Footer/Shaft/Cap	20	0	0	21-Jun-12A	07-Aug-12A	1281595 - 5 Days x 8 hrs/day						

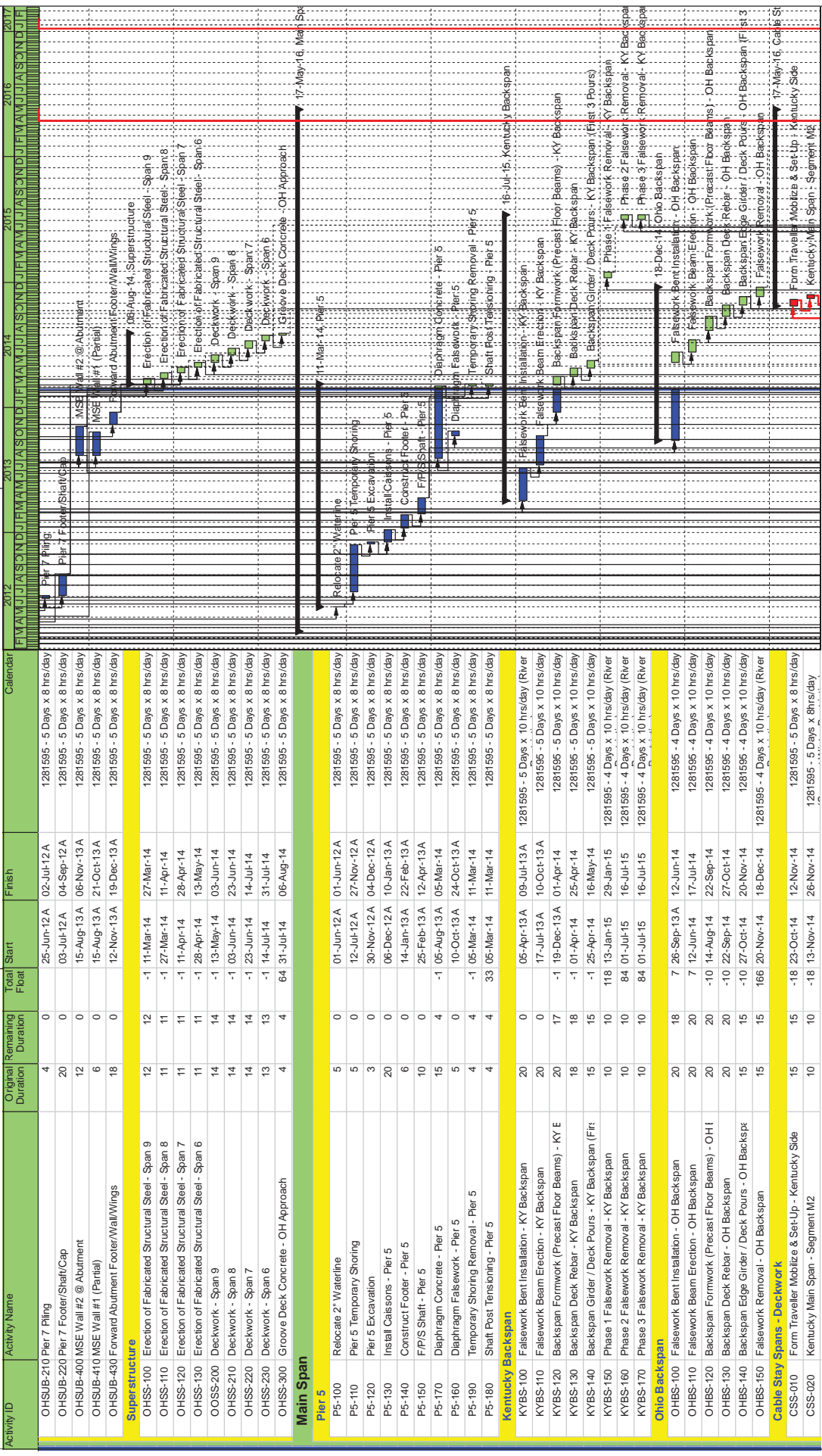
TASK Iter: All Activities

Page 2 of 9

Summary

Actual Work █ Critical Remaining Work █

Remaining Work █ Milestone ◆



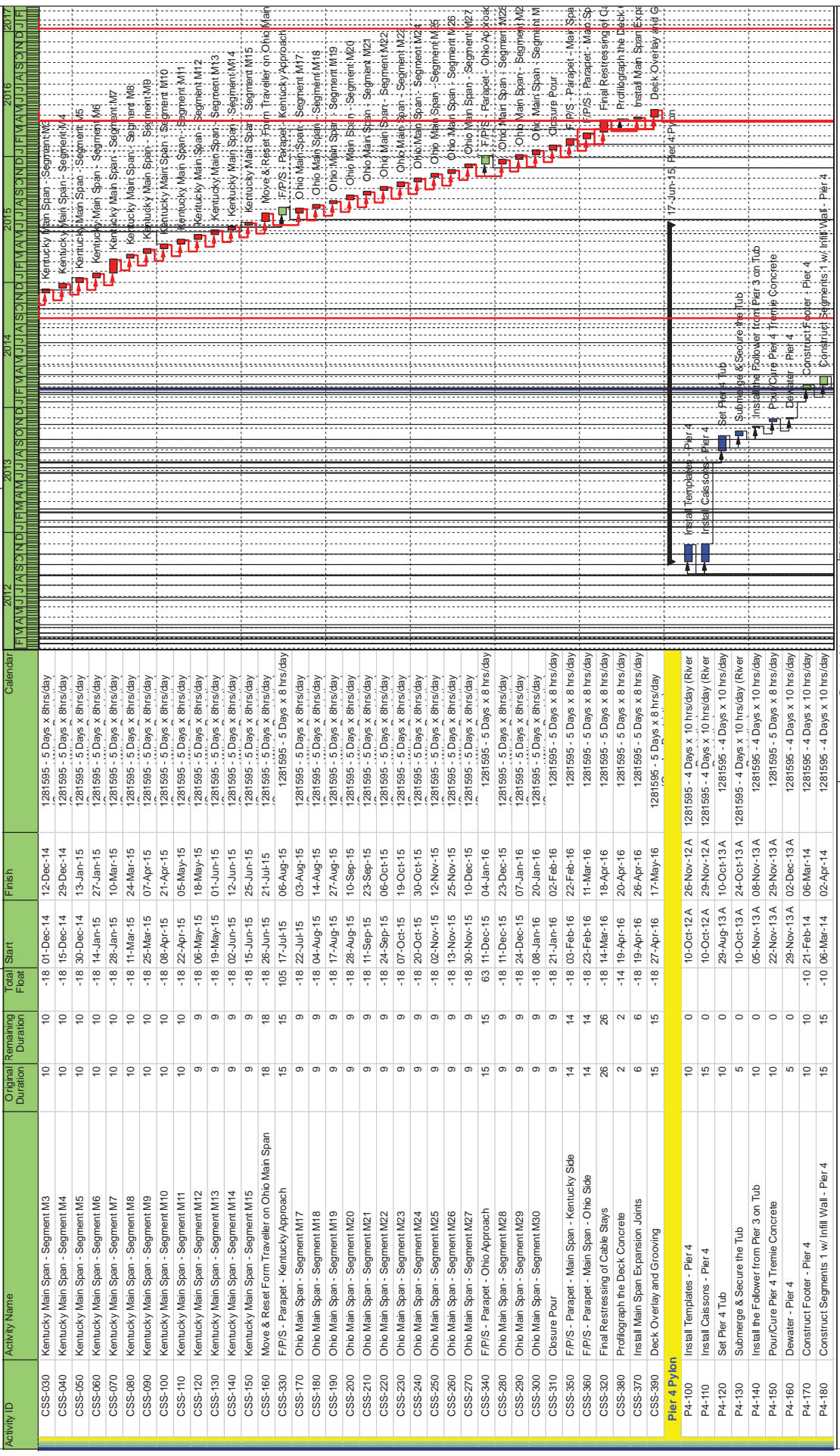
TASK Iter: All Activities

Page 3 of 9

Summary

Actual Work Remaining Work Critical Remaining Work Milestones

Data Date: 21-Feb-14



TASK Iter: All Activities

Page 4 of 9

Data Date: 21-Feb-14

Summary

- Actual Work
- Remaining Work
- Critical Remaining Work
- Milestones

Activity ID	Activity Name	Original Duration	Remaining Duration	Total Float	Start	Finish	Calendar	2012	2013	2014	2015	2016	2017
P4-410	Deliver Tower 4 Anchor Box	1	1	211	20-Mar-14	20-Mar-14	1281595 - 5 Days x 8 hrs/day						
P4-190	Construct Segments 2 w/ Infill Wall + Cap - Pier 4	20	20	-10	02-Apr-14	07-May-14	1281595 - 4 Days x 10 hrs/day						
P4-200	Flood Cofferdam & Remove Followover - Pier 4	3	3	8	07-May-14	12-May-14	1281595 - 5 Days x 10 hrs/day						
P4-210	Segments 3 & 4 - Pier 4	16	16	-10	07-May-14	05-Jun-14	1281595 - 4 Days x 10 hrs/day						
P4-220	Segment 5 - Pier 4	4	4	-10	05-Jun-14	12-Jun-14	1281595 - 4 Days x 10 hrs/day						
P4-230	Segment 5 Strut Post Tensioning - Pier 4	4	4	-10	12-Jun-14	19-Jun-14	1281595 - 4 Days x 10 hrs/day						
P4-235	Segment 5 Strut Post Tensioning - Pier 4	2	2	-10	19-Jun-14	24-Jun-14	1281595 - 4 Days x 10 hrs/day						
P4-240	Pier Table Falsework - Pier 4	10	10	-10	24-Jun-14	10-Jul-14	1281595 - 4 Days x 10 hrs/day						
P4-245	Construct Pier Table - Pier 4 (Includes Final Backspan Pour)	20	20	-10	10-Jul-14	14-Aug-14	1281595 - 4 Days x 10 hrs/day						
P4-250	Segments 6 (Inc. Cure) - Pier 4	16	16	41	14-Aug-14	08-Sep-14	1281595 - 5 Days x 8 hrs/day						
P4-260	Segments 7 (Inc. Cure) - Pier 4	10	10	-12	20-Nov-14	08-Dec-14	1281595 - 5 Days x 8 hrs/day						
P4-255	Ladders / Platforms / Access Hatches - Segment 6	5	5	-12	08-Dec-14	15-Dec-14	1281595 - 5 Days x 8 hrs/day						
P4-270	Segment 8 (Inc. Cure) - Pier 4	11	11	-12	15-Dec-14	31-Dec-14	1281595 - 5 Days x 8 hrs/day						
P4-265	Ladders / Platforms / Access Hatches - Segment 7	5	5	-12	31-Dec-14	08-Jan-15	1281595 - 5 Days x 8 hrs/day						
P4-280	Lower Cross Strut & Jacking - Pier 4	3	3	-10	31-Dec-14	06-Jan-15	1281595 - 5 Days x 8 hrs/day						
P4-290	Segments 9, 10, & 11 (Inc. Cure) - Pier 4	15	15	-12	08-Jan-15	29-Jan-15	1281595 - 5 Days x 8 hrs/day						
P4-285	Upper Cross Strut - Pier 4	3	3	-10	29-Jan-15	03-Feb-15	1281595 - 5 Days x 8 hrs/day						
P4-275	Ladders / Platforms / Access Hatches - Segment 8	5	5	-12	29-Jan-15	05-Feb-15	1281595 - 5 Days x 8 hrs/day						
P4-295	Ladders / Platforms / Access Hatches - Segments 9	5	5	-12	29-Jan-15	05-Feb-15	1281595 - 5 Days x 8 hrs/day						
P4-300	Install Cable Box Sec #1 & Supports - Pier 4	3	3	-12	05-Feb-15	10-Feb-15	1281595 - 5 Days x 8 hrs/day						
P4-310	Segments 12 & 13 (Inc. Cure) - Pier 4	10	10	-12	10-Feb-15	24-Feb-15	1281595 - 5 Days x 8 hrs/day						
P4-315	Ladders / Platforms / Access Hatches - Segments 12	5	5	-12	24-Feb-15	03-Mar-15	1281595 - 5 Days x 8 hrs/day						
P4-320	Install Cable Box Sec #2 - Pier 4	3	3	-12	03-Mar-15	06-Mar-15	1281595 - 5 Days x 8 hrs/day						
P4-330	Install Temporary Supports Box Sec #2 - Pier 4	2	2	-12	03-Mar-15	05-Mar-15	1281595 - 5 Days x 8 hrs/day						
P4-340	Jack Upper Cross Strut - Pier 4	2	2	-12	06-Mar-15	10-Mar-15	1281595 - 5 Days x 8 hrs/day						
P4-350	Segments 14 & 15 (Inc. Cure) - Pier 4	10	10	-12	10-Mar-15	24-Mar-15	1281595 - 5 Days x 8 hrs/day						
P4-355	Ladders / Platforms / Access Hatches - Segments 14	5	5	-12	24-Mar-15	31-Mar-15	1281595 - 5 Days x 8 hrs/day						
P4-360	Cross Strut @ Segment 15 - Pier 4	3	3	-12	31-Mar-15	03-Apr-15	1281595 - 5 Days x 8 hrs/day						
P4-365	Jack Upper Cross Strut - Pier 4	2	2	-12	03-Apr-15	07-Apr-15	1281595 - 5 Days x 8 hrs/day						
P4-370	Install Cable Box Sec #3 - Pier 4	2	2	-12	07-Apr-15	09-Apr-15	1281595 - 5 Days x 8 hrs/day						
P4-380	Segments 16, 17, & 18 (Inc. Cure) - Pier 4	15	15	-12	09-Apr-15	30-Apr-15	1281595 - 5 Days x 8 hrs/day						
P4-385	Ladders / Platforms / Access Hatches - Segments 16	10	10	-12	30-Apr-15	14-May-15	1281595 - 5 Days x 8 hrs/day						
P4-390	Remove Upper / Lower Cross Struts - Pier 4	3	3	-12	14-May-15	19-May-15	1281595 - 5 Days x 8 hrs/day						
P4-400	Cable Stay Rigging - Pier 4	20	20	-12	19-May-15	17-Jun-15	1281595 - 5 Days x 8 hrs/day						
Preliminary Work													
MSP-200	Kentucky Side - Access Road to River	15	0	19-Mar-12A	06-Apr-12A	1281595 - 5 Days x 8 hrs/day							
MSP-300	Mussel Inspection Work / Mussel Relocation (Partial)	5	0	03-Apr-12A	17-Apr-12A	1281595 - 5 Days x 8 hrs/day (Mussel)							
MSP-210	Install Sheet Piling - Kentucky Side	5	0	09-Apr-12A	13-Apr-12A	1281595 - 5 Days x 8 hrs/day							
MSP-100	Ohio Side - Access Road to River	15	0	18-Apr-12A	01-May-12A	1281595 - 5 Days x 8 hrs/day							
MSP-110	Ohio Side - Install Sheet Piling	4	0	07-May-12A	10-May-12A	1281595 - 5 Days x 10 hrs/day							
MSP-400	Vibrate 2 Caissons to Rock	15	0	14-May-12A	10-Jun-12A	1281595 - 4 Days x 10 hrs/day							
MSP-410	Complete Test Caisson Installation	5	0	11-Jul-12A	21-Jul-12A	1281595 - 4 Days x 10 hrs/day							
MSP-420	Perform Caisson Tests	10	0	26-Jul-12A	27-Jul-12A	1281595 - 4 Days x 10 hrs/day							
Pier 2													
P2-110	Install Caisson Templates - Pier 2	2	0	07-Sep-12A	28-Sep-12A	1281595 - 5 Days x 10 hrs/day							
P2-120	Install Caissons - Pier 2	20	0	07-Sep-12A	10-Oct-12A	1281595 - 5 Days x 10 hrs/day							
P2-100	Assemble Wale Set on Deck Barge	5	0	05-Oct-12A	30-Nov-12A	1281595 - 4 Days x 10 hrs/day (River)							

Legend:
█ Actual Work
█ Remaining Work
█ Critical Remaining Work
◆ Milestone

Summary

7-Jul-12A Preliminary Work
 Kentucky Side - Access Road to River
 Mussel Inspection Work / Mussel Relocation (Partial)
 Install Sheet Piling - Kentucky Side
 Ohio Side - Access Road to River
 Ohio Side - Install Sheet Piling
 Vibrate 2 Caissons to Rock
 Complete Test Caisson Installation
 Perform Caisson Tests
 06-Mar-14, Pier 2
 Install Caisson Templates - Pier 2
 Install Caissons - Pier 2
 Assemble Wale Set on Deck Barge

TASK Iter: All Activities

Page 5 of 9

Data Date: 21-Feb-14

Activity ID	Activity Name	Original Duration	Remaining Duration	Total Float	Start	Finish	Calendar
P2-150	Excavate as Req'd for Tremie - Pier 2	6	0	0	19-Nov-12A	26-Nov-12A	1281595 - 4 Days x 10 hrs/day
P2-130	Drive Spuds and Set Wale	2	0	0	03-Dec-12A	07-Dec-12A	1281595 - 4 Days x 10 hrs/day (River)
P2-140	Install Sheet Pile - Pier 2	8	0	0	10-Dec-12A	16-Jan-13A	1281595 - 4 Days x 10 hrs/day (River)
P2-141	December 2012 Flooding Delay - Pier 2	1	0	0	11-Dec-12A	17-Dec-12A	1281595 - 7 Days (no Holidays)
P2-142	January 2013 Flooding Delay - Pier 2	6	0	0	17-Jan-13A	21-Jan-13A	1281595 - 7 Days (no Holidays)
P2-160	Prep & Pour Tremie - Pier 2	4	0	0	22-Jan-13A	30-Jan-13A	1281595 - 5 Days x 10 hrs/day
P2-170	Dewater & Remove Latience - Pier 2	4	0	0	04-Feb-13A	22-Feb-13A	1281595 - 5 Days x 10 hrs/day
P2-180	Construct Footer - Pier 2	10	0	0	23-Feb-13A	19-Mar-13A	1281595 - 5 Days x 10 hrs/day
P2-190	Pier 2 - 1st Shaft Lift	12	0	0	25-Mar-13A	12-Apr-13A	1281595 - 5 Days x 10 hrs/day
P2-200	Pier 2 - 2nd Shaft Lift	10	0	0	22-Apr-13A	07-May-13A	1281595 - 5 Days x 10 hrs/day
P2-230	Diaphragm Concrete - Pier 2	15	0	0	24-May-13A	21-Aug-13A	1281595 - 5 Days x 10 hrs/day
P2-210	Diaphragm Falsework - Pier 2	5	0	0	31-May-13A	11-Jun-13A	1281595 - 5 Days x 10 hrs/day
P2-240	Shaft Post Tensioning - Pier 2	5	5	-1	21-Feb-14	27-Feb-14	1281595 - 5 Days x 10 hrs/day
P2-220	Remove Sheet Pile & Wale Set	10	10	0	1 21-Feb-14	06-Mar-14	1281595 - 4 Days x 10 hrs/day (River)
Pier 3 Pylon							
P3-100	Install Templates - Pier 3	10	0	0	23-Jul-12A	30-Aug-12A	1281595 - 5 Days x 10 hrs/day (River)
P3-110	Install Caissons - Pier 3	15	0	0	24-Jul-12A	07-Sep-12A	1281595 - 5 Days x 10 hrs/day (River)
P3-120	Set Pier 3 Tub	10	0	0	07-Sep-12A	26-Oct-12A	1281595 - 5 Days x 10 hrs/day
P3-130	Submerge & Secure the Tub	5	0	0	29-Oct-12A	29-Nov-12A	1281595 - 5 Days x 10 hrs/day (River)
P3-140	Install the Pile Follower	15	0	0	30-Nov-12A	15-Jan-13A	1281595 - 5 Days x 10 hrs/day (River)
P3-141	December 2012 Flooding Delay - Pier 3	1	0	0	11-Dec-12A	16-Dec-12A	1281595 - 7 Days (no Holidays)
P3-142	Repair Work from December 2012 Flooding - Pier 3	1	0	0	17-Dec-12A	04-Jan-13A	1281595 - 5 Days x 8 hrs/day
P3-150	Pour Cure Pier 3 Tremie Concrete	10	0	0	16-Jan-13A	23-Jan-13A	1281595 - 5 Days x 10 hrs/day (River)
P3-151	January 2013 Flooding Delay - Pier 3	7	0	0	17-Jan-13A	22-Jan-13A	1281595 - 7 Days (no Holidays)
P3-152	Repair Damage from January 2013 Flooding Delay	28	0	0	23-Jan-13A	01-Mar-13A	1281595 - 5 Days x 8 hrs/day
P3-153	Continue Repair of 2012/2013 Flooding Damage - Pier 3	16	0	0	01-Mar-13A	22-Mar-13A	1281595 - 5 Days x 8 hrs/day
P3-160	Dewater - Pier 3	5	0	0	25-Mar-13A	05-Apr-13A	1281595 - 5 Days x 10 hrs/day (River)
P3-170	Construct Footer - Pier 3	10	0	0	08-Apr-13A	10-May-13A	1281595 - 5 Days x 10 hrs/day
P3-171	April 2013 Repair work - Pier 3	2	0	0	26-Apr-13A	29-Apr-13A	1281595 - 5 Days x 8 hrs/day
P3-180	Construct Segments 1 & Infill Wall - Pier 3	15	0	0	13-May-13A	27-Jun-13A	1281595 - 5 Days x 10 hrs/day
P3-200	Flood Cofferdam & Remove Follower - Pier 3	3	0	0	01-Jul-13A	15-Jul-13A	1281595 - 5 Days x 10 hrs/day
P3-190	Construct Segments 2 & Infill Wall + Cap - Pier 3	20	0	0	16-Jul-13A	19-Aug-13A	1281595 - 5 Days x 10 hrs/day
P3-210	Segments 3 & 4 - Pier 3	16	0	0	20-Aug-13A	11-Oct-13A	1281595 - 5 Days x 10 hrs/day
P3-220	Segment 5 - Pier 3	4	0	0	05-Nov-13A	13-Jan-14A	1281595 - 4 Days x 10 hrs/day
P3-230	Segment 5 Strut - Pier 3	4	0	0	05-Nov-13A	13-Jan-14A	1281595 - 4 Days x 10 hrs/day
P3-420	Demob Causeway Due to High Water/Current Event	8	0	0	06-Dec-13A	06-Dec-13A	1281595 - 5 Days x 8 hrs/day
P3-430	Work Shut Down Due to High Water/Current Event	1	0	0	17-Dec-13A	17-Dec-13A	1281595 - 5 Days x 8 hrs/day
P3-440	Remob Causeway Due to High Water/Current Event	1	0	0	23-Dec-13A	23-Dec-13A	1281595 - 5 Days x 8 hrs/day
P3-450	Demob Causeway Due to High Water/Current Event	8	0	0	03-Jan-14A	03-Jan-14A	1281595 - 5 Days x 8 hrs/day
P3-460	Work Shut Down Due to High Water/Current Event	1	0	0	03-Jan-14A	03-Jan-14A	1281595 - 5 Days x 8 hrs/day
P3-470	Remob Causeway Due to High Water/Current Event	16	5	-17	23-Jan-14A	05-Mar-14	1281595 - 5 Days x 8 hrs/day
P3-250	Segments 6 (Inc. Cure) - Pier 3	2	2	6	21-Feb-14	24-Feb-14	1281595 - 4 Days x 10 hrs/day
P3-235	Strut Post Tensioning - Pier 3	1	1	-17	21-Feb-14A	21-Feb-14	1281595 - 5 Days x 8 hrs/day
P3-480	Demob Causeway Due to High Water/Current Event	5	5	-17	21-Feb-14*	26-Feb-14	1281595 - 5 Days x 8 hrs/day
P3-500	Remob Causeway Due to High Water/Current Event	1	1	-17	26-Feb-14	26-Feb-14	1281595 - 5 Days x 8 hrs/day
P3-260	Segments 7 (Inc. Cure) - Pier 3	10	10	-17	06-Mar-14	19-Mar-14	1281595 - 5 Days x 8 hrs/day



TASK Iter: All Activities

Summary

- Actual Work
- Remaining Work
- Critical Remaining Work
- Milestones

Activity ID	Activity Name	Original Duration	Remaining Duration	Total Float	Start	Finish	Calendar
P3-410	Deliver Tower 3 Anchor Box	1	1	40	20-Mar-14	20-Mar-14	1281595 - 5 Days x 8 hrs/day
P3-255	Ladders / Platforms / Access Hatches - Segment 6	5	5	-17	20-Mar-14	26-Mar-14	1281595 - 5 Days x 8 hrs/day
P3-270	Segment 8 (Inc. Cure) - Pier 3	11	11	-17	27-Mar-14	10-Apr-14	1281595 - 5 Days x 8 hrs/day
P3-280	Lower Cross Strut & Jacking - Pier 3	3	3	-3	11-Apr-14	15-Apr-14	1281595 - 5 Days x 8 hrs/day
P3-265	Ladders / Platforms / Access Hatches - Segment 7	5	5	-17	11-Apr-14	17-Apr-14	1281595 - 5 Days x 8 hrs/day
P3-240	Pier Table Falsework - Pier 3	10	10	-14	17-Apr-14	06-May-14	1281595 - 4 Days x 10 hrs/day
P3-290	Segments 9, 10 & 11 (Inc. Cure) - Pier 3	15	15	-5	18-Apr-14	08-May-14	1281595 - 5 Days x 8 hrs/day
P3-245	Construct Pier Table - Pier 3 (Includes Final Backspan Pour)	20	20	-14	06-May-14	11-Jun-14	1281595 - 4 Days x 10 hrs/day
P3-285	Upper Cross Strut - Pier 3	3	3	2	09-May-14	13-May-14	1281595 - 5 Days x 8 hrs/day
P3-275	Ladders / Platforms / Access Hatches - Segment 8	5	5	-5	09-May-14	15-May-14	1281595 - 5 Days x 8 hrs/day
P3-295	Ladders / Platforms / Access Hatches - Segments 9, 10 & 11	5	5	-5	16-May-14	22-May-14	1281595 - 5 Days x 8 hrs/day
P3-300	Install Cable Box Sec #1 & Supports - Pier 3	3	3	-18	12-Jun-14	16-Jun-14	1281595 - 5 Days x 8 hrs/day
P3-310	Segments 12 & 13 (Inc. Cure) - Pier 3	10	10	-18	17-Jun-14	30-Jun-14	1281595 - 5 Days x 8 hrs/day
P3-320	Install Temporary Supports Box Sec #2 - Pier 3	3	3	-18	01-Jul-14	08-Jul-14	1281595 - 5 Days x 8 hrs/day
P3-330	Install Cable Box Sec #2 - Pier 3	2	2	-17	09-Jul-14	10-Jul-14	1281595 - 5 Days x 8 hrs/day
P3-340	Jack Upper Cross Strut - Pier 3	2	2	-18	14-Jul-14	15-Jul-14	1281595 - 5 Days x 8 hrs/day
P3-350	Segments 14 & 15 (Inc. Cure) - Pier 3	10	10	-18	16-Jul-14	29-Jul-14	1281595 - 5 Days x 8 hrs/day
P3-355	Ladders / Platforms / Access Hatches - Segments 14 & 15	5	5	-18	30-Jul-14	05-Aug-14	1281595 - 5 Days x 8 hrs/day
P3-360	Cross Strut @ Segment 15 - Pier 3	3	3	-18	06-Aug-14	08-Aug-14	1281595 - 5 Days x 8 hrs/day
P3-365	Jack Upper Cross Strut - Pier 3	2	2	-18	11-Aug-14	12-Aug-14	1281595 - 5 Days x 8 hrs/day
P3-370	Install Cable Box Sec #3 - Pier 3	2	2	-18	13-Aug-14	14-Aug-14	1281595 - 5 Days x 8 hrs/day
P3-380	Segments 16, 17, & 18 (Inc. Cure) - Pier 3	15	15	-18	15-Aug-14	05-Sep-14	1281595 - 5 Days x 8 hrs/day
P3-385	Ladders / Platforms / Access Hatches - Segment 16	10	10	-18	08-Sep-14	18-Sep-14	1281595 - 5 Days x 8 hrs/day
P3-390	Remove Upper / Lower Cross Struts - Pier 3	3	3	-18	22-Sep-14	24-Sep-14	1281595 - 5 Days x 8 hrs/day
P3-400	Cable Stay Rigging - Pier 3	20	20	-18	25-Sep-14	22-Oct-14	1281595 - 5 Days x 8 hrs/day



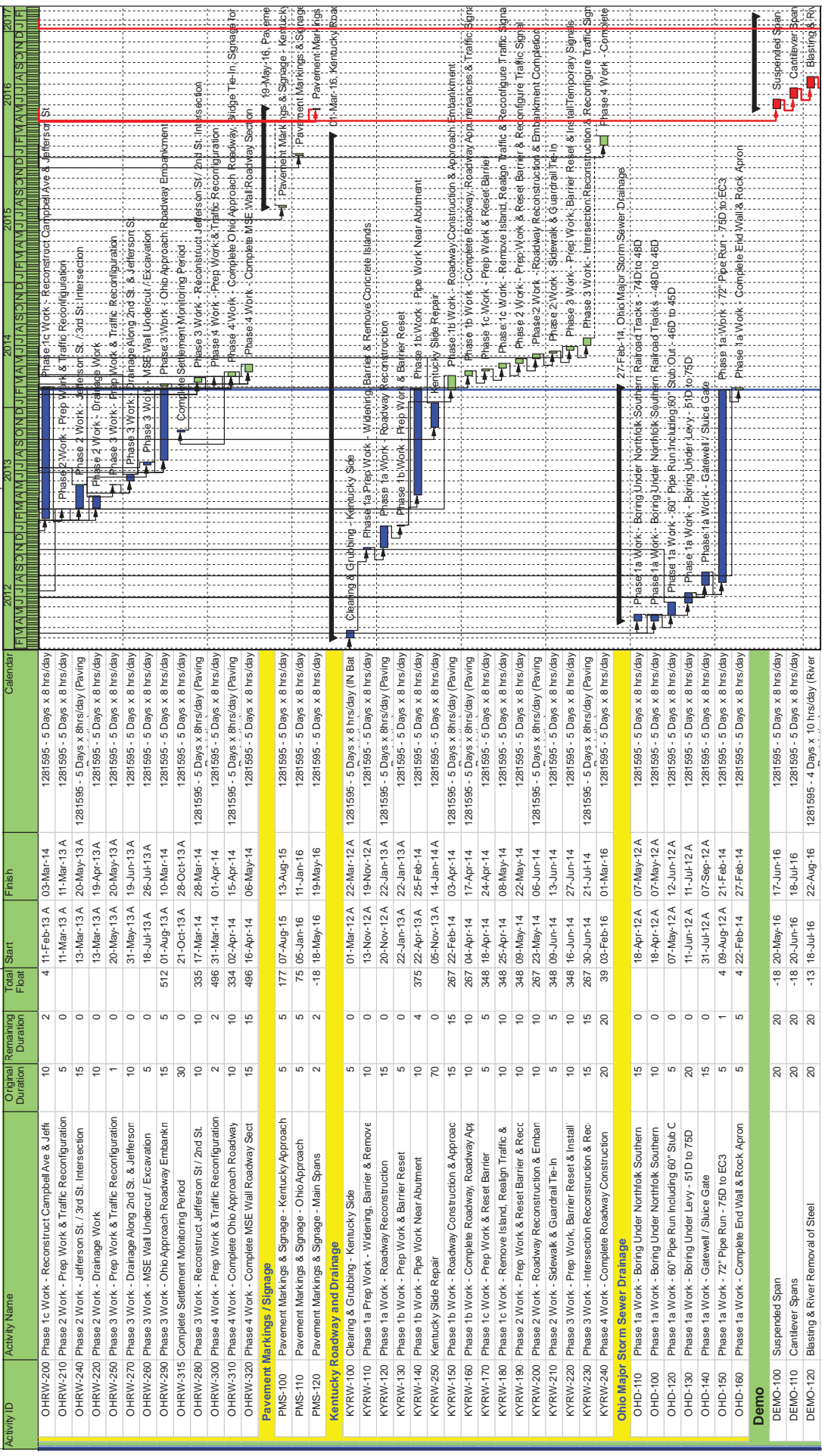
Legend:
█ Actual Work
█ Remaining Work
◆ Critical Remaining Work
◆ Milestone

Summary

TASK Iter: All Activities

Page 7 of 9

Data Date: 21-Feb-14



Activity ID	Activity Name	Original Duration	Remaining Duration	Total	Start	Finish
OHRW-200	Phase 1c Work - Reconstruct Campbell Ave & Jeff	10	2	4	11-Feb-13 A	03-Mar-14
OHRW-210	Phase 2 Work - Prep Work & Traffic Reconfiguration	5	0	0	11-Mar-13 A	11-Mar-13 A
OHRW-240	Phase 2 Work - Jefferson St. / 3rd St. Intersection	15	0	0	13-Mar-13 A	20-May-13 A
OHRW-220	Phase 2 Work - Drainage Work	10	0	0	13-Mar-13 A	19-Apr-13 A
OHRW-250	Phase 3 Work - Prep Work & Traffic Reconfiguration	1	0	0	20-May-13 A	20-May-13 A
OHRW-270	Phase 3 Work - Drainage Along 2nd St. & Jefferson	0	0	0	31-May-13 A	19-Jun-13 A
OHRW-260	Phase 3 Work - MSE Wall Undercut / Excavation	5	0	0	01-Aug-13 A	26-Jun-13 A
OHRW-230	Phase 3 Work - Ohio Approach Roadway Embankment	15	5	512	01-Aug-13 A	10-Mar-14
OHRW-315	Complete Settlement Monitoring Period	30	0	0	21-Oct-13 A	28-Oct-13 A
OHRW-280	Phase 3 Work - Reconstruct Jefferson St / 2nd St.	10	10	335	17-Mar-14	28-Mar-14
OHRW-300	Phase 4 Work - Prep Work & Traffic Reconfiguration	2	2	496	31-Mar-14	01-Apr-14
OHRW-310	Phase 4 Work - Complete Ohio Approach Roadway	10	10	334	02-Apr-14	15-Apr-14
OHRW-320	Phase 4 Work - Complete MSE Wall Roadway Sect	15	15	496	16-Apr-14	06-May-14
Pavement Markings / Signage						
PMS-100	Pavement Markings & Signage - Kentucky Approach	5	5	177	07-Aug-15	13-Aug-15
PMS-110	Pavement Markings & Signage - Ohio Approach	5	5	75	05-Jan-16	11-Jan-16
PMS-120	Pavement Markings & Signage - Main Spans	2	2	-18	18-May-16	19-May-16
Kentucky Roadway and Drainage						
KYRW-100	Cleaning & Grubbing - Kentucky Side	5	0	0	01-Mar-12 A	22-Mar-12 A
KYRW-110	Phase 1a Prep Work - Widening, Barrier & Remove	15	0	0	13-Nov-12 A	19-Nov-12 A
KYRW-120	Phase 1a Work - Roadway Reconstruction	15	0	0	20-Nov-12 A	22-Jan-13 A
KYRW-130	Phase 1b Work - Prep Work & Barrier Reset	5	0	0	22-Jan-13 A	22-Jan-13 A
KYRW-140	Phase 1b Work - Pipe Work Near Abutment	10	4	375	22-Feb-14	25-Feb-14
KYRW-250	Kentucky Side Repair	70	0	0	05-Nov-13 A	14-Jan-14 A
KYRW-150	Phase 1b Work - Roadway Construction & Approach	15	15	267	22-Feb-14	03-Apr-14
KYRW-160	Phase 1a Work - Complete Roadway, Roadway Apt	10	10	267	04-Apr-14	17-Apr-14
KYRW-170	Phase 1c Work - Prep Work & Reset Barrier	5	5	348	18-Apr-14	24-Apr-14
KYRW-180	Phase 1c Work - Remove Island, Realign Traffic &	10	10	348	25-Apr-14	08-May-14
KYRW-190	Phase 2 Work - Prep Work & Reset Barrier & Rec	10	10	348	09-May-14	22-May-14
KYRW-200	Phase 2 Work - Roadway Reconstruction & Emban	10	10	267	23-May-14	06-Jun-14
KYRW-210	Phase 2 Work - Sidewalk & Guardrail Tie-In	5	5	348	09-Jun-14	13-Jun-14
KYRW-220	Phase 3 Work - Prep Work, Barrier Reset & Install	10	10	348	16-Jun-14	27-Jun-14
KYRW-230	Phase 3 Work - Intersection Reconstruction & Rec	15	15	267	30-Jun-14	21-Jul-14
KYRW-240	Phase 4 Work - Complete Roadway Construction	20	20	39	03-Feb-16	01-Mar-16
Ohio Major Storm Sewer Drainage						
OHD-110	Phase 1a Work - Boring Under Northlok Southern	15	0	0	18-Apr-12 A	07-May-12 A
OHD-100	Phase 1a Work - Boring Under Northlok Southern	10	0	0	18-Apr-12 A	07-May-12 A
OHD-120	Phase 1a Work - Boring Under Northlok Southern	5	0	0	07-May-12 A	12-Jun-12 A
OHD-130	Phase 1a Work - Boring Under Levy - 51D to 75D	20	0	0	11-Jun-12 A	11-Jul-12 A
OHD-140	Phase 1a Work - Gateval / Sluice Gate	15	0	0	31-Jul-12 A	07-Sep-12 A
OHD-150	Phase 1a Work - 72" Pipe Run - 75D to EC3	5	1	4	09-Aug-12 A	21-Feb-14
OHD-160	Phase 1a Work - Complete End Wall & Rock Apron	5	5	4	22-Feb-14	27-Feb-14
DEMO						
DEMO-100	Suspended Span	20	20	-18	20-May-16	17-Jun-16
DEMO-110	Canilever Spans	20	20	-18	20-Jun-16	18-Jul-16
DEMO-120	Blasting & River Removal of Steel	20	20	-13	18-Jul-16	22-Aug-16

Activity ID	Activity Name	Original Duration	Remaining Duration	Total Float	Start	Finish	Calendar
DEMO-130	Ohio Land Bents & Main Pier	20	20	-16	23-Aug-16	20-Sep-16	1281595 - 5 Days x 8 hrs/day
DEMO-140	Pier Disposal - Pier B	10	10	-6	23-Aug-16	06-Sep-16	1281595 - 5 Days x 8 hrs/day
DEMO-150	Pier Disposal - Pier C	20	20	61	07-Sep-16	04-Oct-16	1281595 - 5 Days x 8 hrs/day
DEMO-160	Kentucky Bents & Main Pier	20	20	-16	21-Sep-16	18-Oct-16	1281595 - 5 Days x 8 hrs/day
DEMO-170	Processing Concrete - Ohio Bents & Main Pier	20	20	-16	21-Sep-16	18-Oct-16	1281595 - 5 Days x 8 hrs/day
DEMO-180	Pier Disposal - Pier D	16	16	61	05-Oct-16	26-Oct-16	1281595 - 5 Days x 8 hrs/day
DEMO-190	Processing Concrete - Kentucky Bents & Main Pier	20	20	-16	19-Oct-16	15-Nov-16	1281595 - 5 Days x 8 hrs/day
DEMO-210	Sweeping River	4	4	49	26-Oct-16	02-Nov-16	1281595 - 4 Days x 10 hrs/day (River)
DEMO-220	Processing Concrete - Main Span Piers	20	20	-16	16-Nov-16	15-Dec-16	1281595 - 5 Days x 8 hrs/day
DEMO-200	Reconstruct KY Local Streets & Sidewalks	20	20	-16	16-Dec-16	16-Jan-17	1281595 - 5 Days x 8 hrs/day
DEMO-230	Reconstruct OH Local streets & Sidewalks	20	20	-16	17-Jan-17	13-Feb-17	1281595 - 5 Days x 8 hrs/day



Actual Work
 Remaining Work
 Critical Remaining Work
 Milestone

Page 9 of 9

TASK filter: All Activities

Data Date: 21-Feb-14