

SAFETY APPLICATION SUMMARY

ODOT District 9

PIK-32-18.56 (SR 220)

RCUT



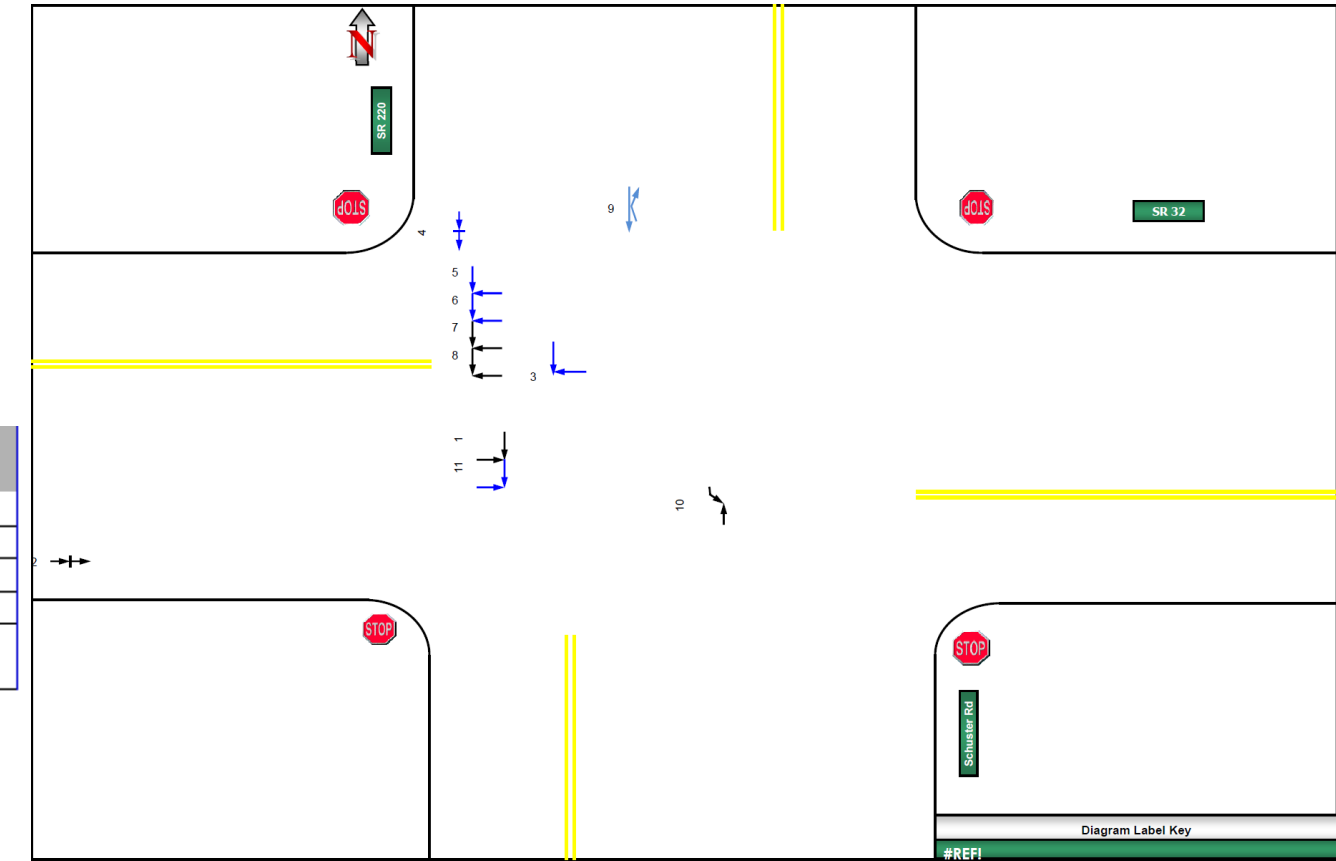
Crash Statistics (2018-2022)

- 11 Total Crashes
- 6 injury crashes
- 7 angle crashes (64% of total crashes)

| | |
|--|------|
| Benefit / Total Project Cost Ratio | 0.22 |
| Benefit / Safety Funding Request Ratio | 1.25 |

Crash Diagram (2020-2022)

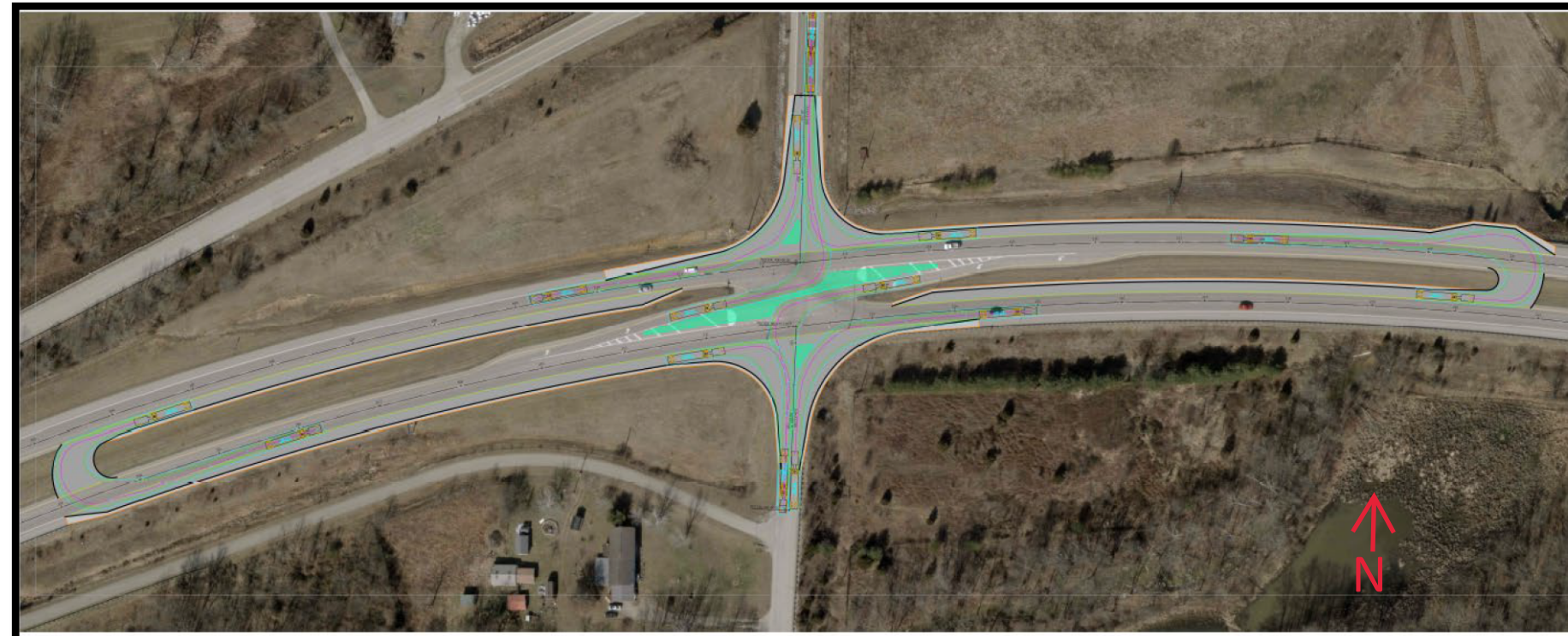
| Project Funding | | | | | |
|-----------------|-------------------------|----------------------|----------------|--------------------|--------------------|
| Project Phase | PE - Preliminary Design | PE - Detailed Design | ROW/ Utilities | Construction | Total |
| Fiscal Year | 2024 | 2025 | | 2028 | |
| Previous Safety | | | | | \$0.00 |
| New Safety | \$302,760 | \$72,983 | | | \$375,743 |
| Sponsor Funding | | \$56,771 | | \$1,802,144 | \$1,300,000 |
| Total | \$302,760 | \$129,754 | | \$1,808,144 | \$2,234,658 |



| Category | Scoring Value | Points Awarded | Points Possible |
|--|---------------|----------------|-----------------|
| Ratio of Observed Fatal and Serious Injuries to Observed Total Crashes | 0.00 | 0 | 30 |
| Percentage of the Potential for Safety Improvement to Total Expected Crashes | 42.11% | 20 | 20 |
| Relative Severity Index | 52,104.96 | 20 | 20 |
| Equivalent Property Damage Only Index | 5.11 | 18 | 20 |
| Location Equity Measure | 33.63% | 10 | 10 |
| Total | | 68 | 100 |

Description

- An RCUT intersection design with an open median is recommended to be constructed at this intersection. The implementation of an RCUT is expected to mitigate the primary crash concern of angle crashes at the intersection. It is expected ECAT is underrepresenting the safety benefit of the RCUT.



Proposed Conditions