

Need to review in the  
field and see if there are  
any problems with Proposal.  
What properties do we have  
to take?

JUN 13 2001

Copy Norris  
wills  
Baird  
Chaffin  
Hille



**WOOLPERT**

Woolpert LLP  
2760 Airport Drive  
Suite 140  
Columbus, OH 43219-2284  
614.476.6000  
Fax: 614.476.6225  
www.woolpert.com

June 11, 2001

Mr. Doug Buskirk, PE  
Contract Manager  
ODOT District 9  
650 Eastern Avenue  
P.O. Box 467  
Chillicothe, Ohio 45601

**RE:   HIG-50-2.18: Alternative No. 5, Preliminary Design  
      GESA Task Order No. 9-J**

Dear Mr. Buskirk:

As per our meeting on May 29, 2001, we have completed the preliminary design and cost estimate for the relocation of approximately 600 feet of the SR 134 at the US 50 intersection. Attached are three sets of the Plan & Profile, Typical Sections and cost estimate for this alternative.

If you have any questions or need more information feel free to contact us.

Sincerely,

**WOOLPERT LLP**

Todd D. Willis, PE, PS  
Program Director

Cc:   Jim Prosch, Letter Only



PROJECT: HIG-50-2.18  
 DATE: June 11, 2001

DISTRICT 9 TASK ORDER NO. 9-J  
 PREPARED BY: Todd D. Willis, PE, PS/ Woolpert LLP

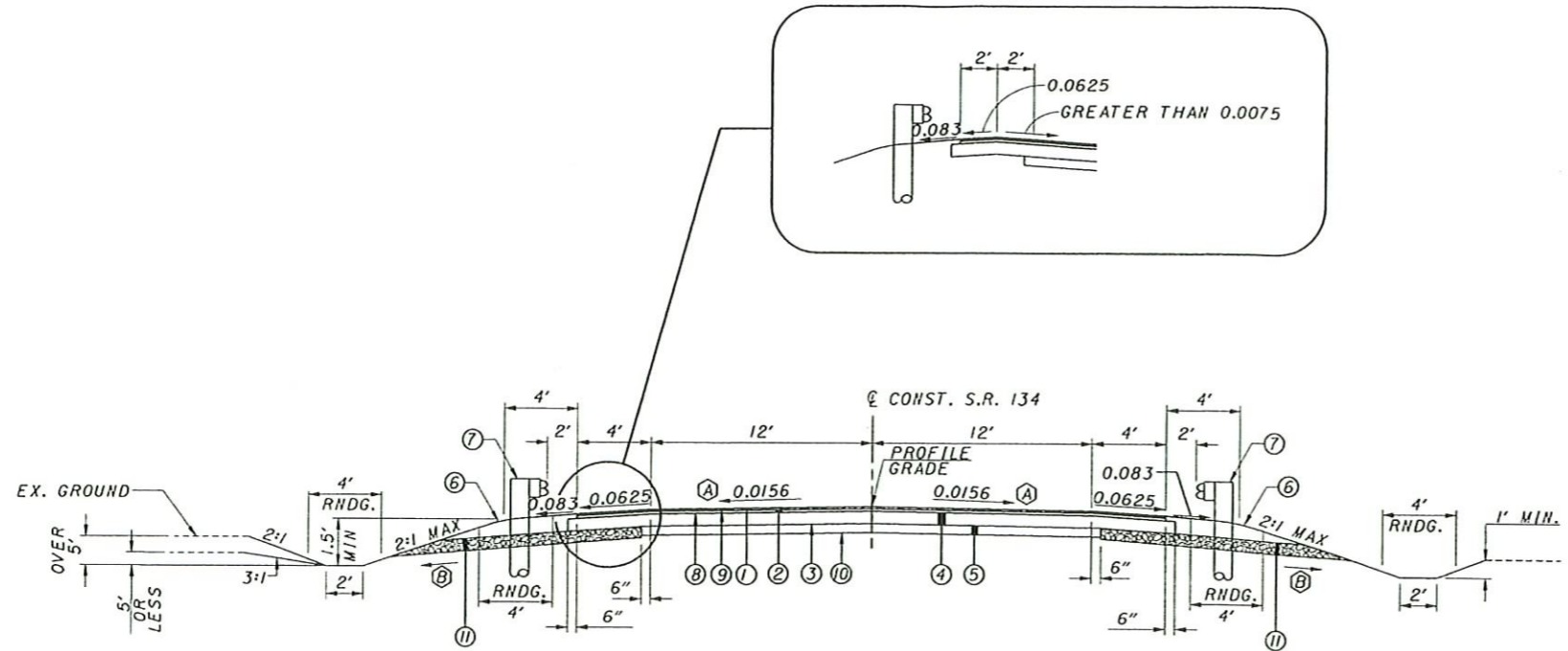
**ALTERNATIVE # 5--REALIGN SOUTH LEG SR 134 TO WEST**

ITEM NO	DESCRIPTION	ESTIMATED QUANTITIES	UNIT	UNIT COST TOTAL	TOTAL COST
<b>Roadway and Buildings</b>					
202	Structure Removal	Lump		\$ 20,000.00	\$ 20,000.00
202	Pavement Removed	500	S.Y.	\$ 6.00	\$ 3,000.00
202	Guardrail Removed	400	L.F.	\$ 1.00	\$ 400.00
202	Catch Basin Removed	3	EACH	\$ 220.00	\$ 660.00
202	Pipe Removed	300	L.F.	\$ 12.00	\$ 3,600.00
203	Excavation	2000	C.Y.	\$ 5.00	\$ 10,000.00
203	Embankment	1000	C.Y.	\$ 4.00	\$ 4,000.00
203	Subgrade Compaction	2580	S.Y.	\$ 1.00	\$ 2,580.00
301	Bituminous Aggregate Base	525	C.Y.	\$ 55.00	\$ 28,875.00
304	Aggregate Base	320	C.Y.	\$ 22.00	\$ 7,040.00
448	Asphalt Concrete, Surface Course	100	C.Y.	\$ 70.00	\$ 7,000.00
448	Asphalt Concrete, Intermediate Course	140	C.Y.	\$ 72.00	\$ 10,080.00
408	Bituminous Prime Coat	900	GAL	\$ 1.00	\$ 900.00
601	Rock Channel Protection with Fabric Filter	4	C.Y.	\$ 50.00	\$ 200.00
602	Concrete Masonry	1.72	C.Y.	\$ 620.00	\$ 1,066.40
603	24" Conduit, Type B	200	L.F.	\$ 65.00	\$ 13,000.00
605	Aggregate Drains	450	L.F.	\$ 7.00	\$ 3,150.00
870	Seeding and Mulching	4000	S.Y.	\$ 0.50	\$ 2,000.00
877	Erosion Control	Lump		\$ 5,000.00	\$ 5,000.00
619	Field Office	Lump		\$ 4,500.00	\$ 4,500.00
623	Construction Staking	Lump		\$ 4,000.00	\$ 4,000.00
624	Mobilization	Lump		\$ 4,000.00	\$ 4,000.00
	<b>SUBTOTAL</b>				<b>\$ 135,051.40</b>
<b>Traffic Control</b>					
642	Edge Line	0.50	MILE	\$ 1,030.00	\$ 515.00
642	Center Line	0.25	MILE	\$ 1,955.00	\$ 488.75
642	Stop Line	30.00	L.F.	\$ 5.00	\$ 150.00
202	Raised Pavement Marker Removed for Storage	10	EACH	\$ 5.00	\$ 50.00
621	Raised Pavement Marker Installation Only	10	EACH	\$ 12.00	\$ 120.00
621	Raised Pavement Marker Casting Installation Only	5	EACH	\$ 11.00	\$ 55.00
621	Prismatic Retroreflector	10	EACH	\$ 7.00	\$ 70.00
626	Barrier Reflector, Type A	22	EACH	\$ 6.00	\$ 132.00
630	Sign, Flat Sheet, Type G	30	S.F.	\$ 15.00	\$ 450.00
630	Removal of Sign and Disposal, Flat Sheet	44	EACH	\$ 8.00	\$ 352.00
630	Ground-Mounted Support, No. 3	30	L.F.	\$ 6.00	\$ 180.00
630	Sign Backing Assembly	0	EACH	\$ 95.00	\$ -
630	Removal of Ground-Mounted Post Support and Disposal	5	EACH	\$ 12.00	\$ 60.00
632	Removal of Intersection Control Beacon, as per Plan	1	EACH	\$ 1,870.00	\$ 1,870.00
632	Vehicular Signal Head, 1-Section, 12 Inch Lens 4-Way	0	EACH	\$ 685.00	\$ -
632	Strain Pole, Type TC-81.10M, Design 1	0	EACH	\$ 1,225.00	\$ -
632	Strain Pole Foundation	0	EACH	\$ 1,600.00	\$ -
632	Flasher Control Unit	0	EACH	\$ 770.00	\$ -
632	Messenger Wire 7 Strand 3/8 Inch	0	L.F.	\$ 6.00	\$ -
632	Signal Cable, 3-Conductor, No. 14 AWG	0	L.F.	\$ 2.00	\$ -
632	Power Service	0	EACH	\$ 975.00	\$ -
632	Power Cable, 2-Conductor, No. 8 AWG	0	L.F.	\$ 2.00	\$ -
632	Conduit Riser, 2 Inch Diameter	0	L.F.	\$ 270.00	\$ -
625	Ground Rod	0	EACH	\$ 135.00	\$ -
	<b>SUBTOTAL</b>				<b>\$ 4,492.75</b>

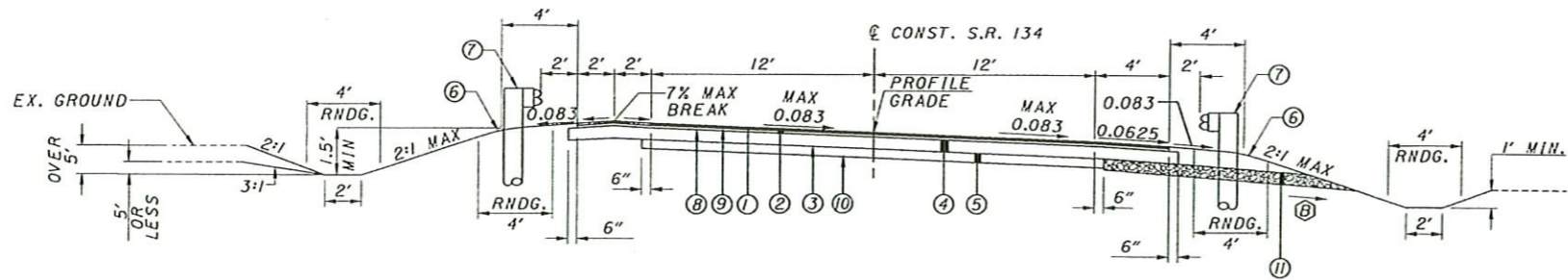
PROJECT: HIG-50-2.18  
 DATE: June 11, 2001

DISTRICT 9 TASK ORDER NO. 9-J  
 PREPARED BY: Todd D. Willis, PE, PS/ Woolpert LLP

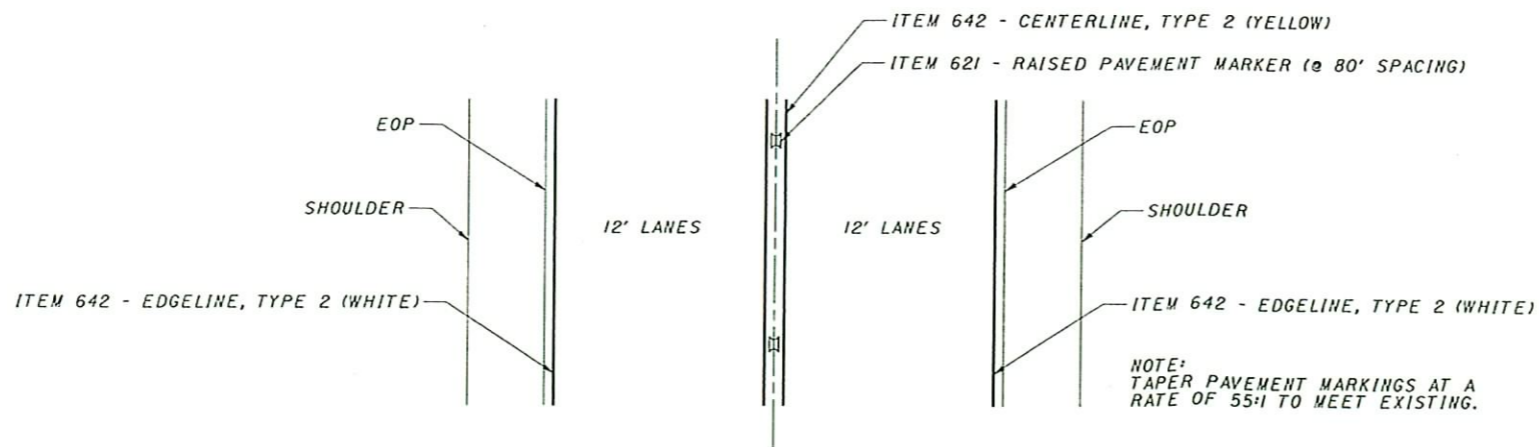
ALTERNATIVE # 5--REALIGN SOUTH LEG SR 134 TO WEST					
ITEM NO	DESCRIPTION	ESTIMATED QUANTITIES	UNIT	UNIT COST TOTAL	TOTAL COST
<b>MAINTAINING TRAFFIC</b>					
614	Sign, Flat Sheet	50	S.F.	\$ 14.00	\$ 700.00
614	Work Zone Marking Sign	10	EACH	\$ 85.00	\$ 850.00
614	Temporary Edge Line, Class 1	0	MILE	\$ 670.00	\$ -
614	Temporary Raised Pavement Markers, Type A	0	EACH	\$ 4.00	\$ -
622	Portable Concrete Barrier, 32 Inch, as per Plan	100	L.F.	\$ 12.00	\$ 1,200.00
626	Barrier Reflectors, Type B	0	EACH	\$ 5.00	\$ -
614	Object Markers	0	EACH	\$ 9.00	\$ -
615	Temporary Pavement (pg. 64 Binder), Class A	100	S.Y.	\$ 20.00	\$ 2,000.00
614	Bituminous Concrete for Maintaining Traffic	40	C.Y.	\$ 135.00	\$ 5,400.00
616	Water	20	M.GAL	\$ 20.00	\$ 400.00
616	Calcium Chloride	3	TON	\$ 200.00	\$ 600.00
614	Portable Changeable Message Signs, as per Plan	2	SIGN-MO.	\$ 1,480.00	\$ 2,960.00
614	Replacement Drums	20	EACH	\$ 60.00	\$ 1,200.00
614	Replacement Signs	20	EACH	\$ 10.00	\$ 200.00
614	Removal of Pavement Markings	1000	L.F.	\$ 0.50	\$ 500.00
614	Law Enforcement Officer with Patrol Car	50	HOUR	\$ 35.00	\$ 1,750.00
614	Maintaining Traffic	Lump			\$ 5,000.00
	<b>SUBTOTAL</b>				<b>\$ 22,760.00</b>
<b>Land and Buildings</b>					
	Land and Building Purchase				\$ 75,000.00
	<b>SUBTOTAL</b>				<b>\$ 75,000.00</b>
	20% Contingency				\$ 47,460.83
<b>PROJECT TOTAL</b>					<b>\$ 284,764.98</b>



**SR 134 NORMAL SECTION**  
 STA. 10+55.73 TO 11+34.84 = 79.11 LF  
 STA. 15+94.54 TO STA. 16+41.86 = 47.32 LF  
 TOTAL = 126.43 LF



**SR 134 SUPERELEVATED SECTION**  
 STA. 11+34.84 TO STA. 15+94.54 = 459.70 LF



**PAVEMENT MARKING DETAIL**  
 SEE SHEET 10 FOR QUANTITIES.

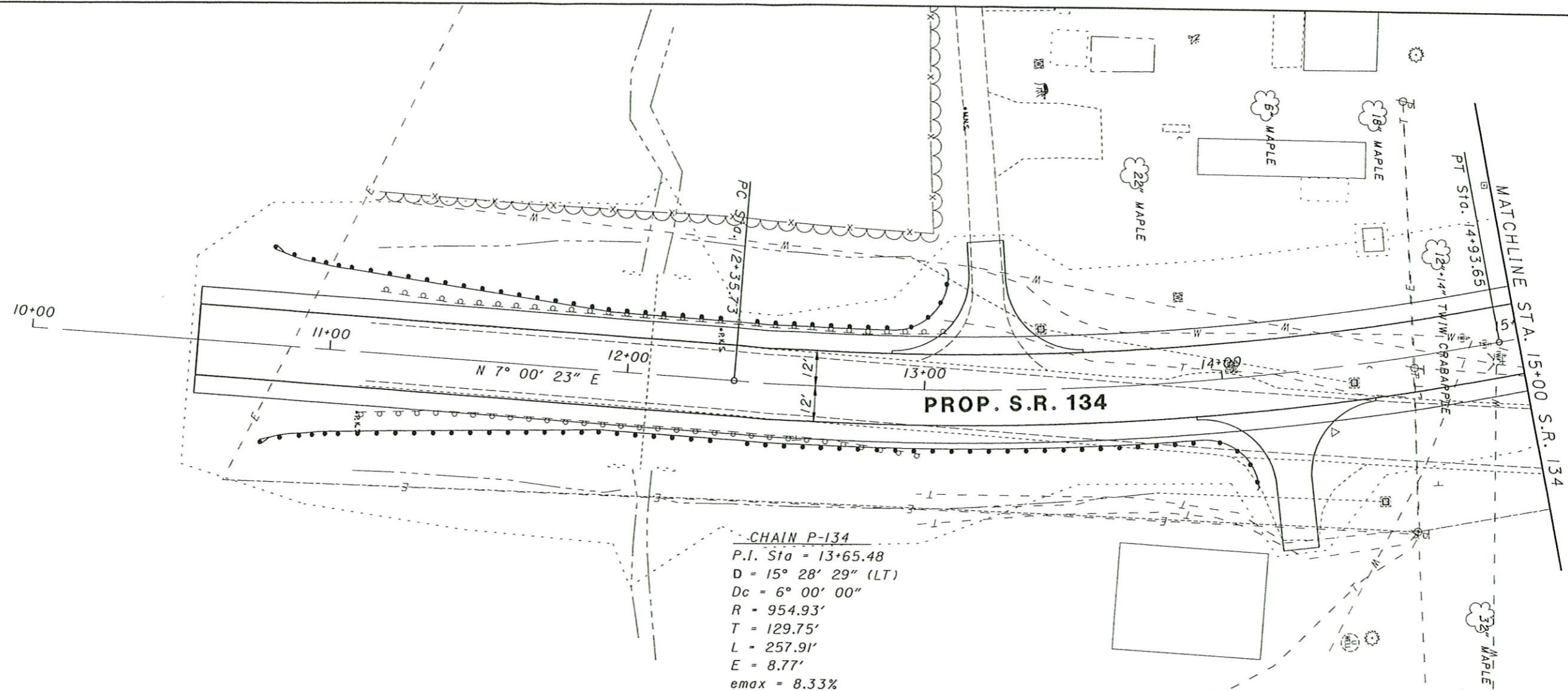
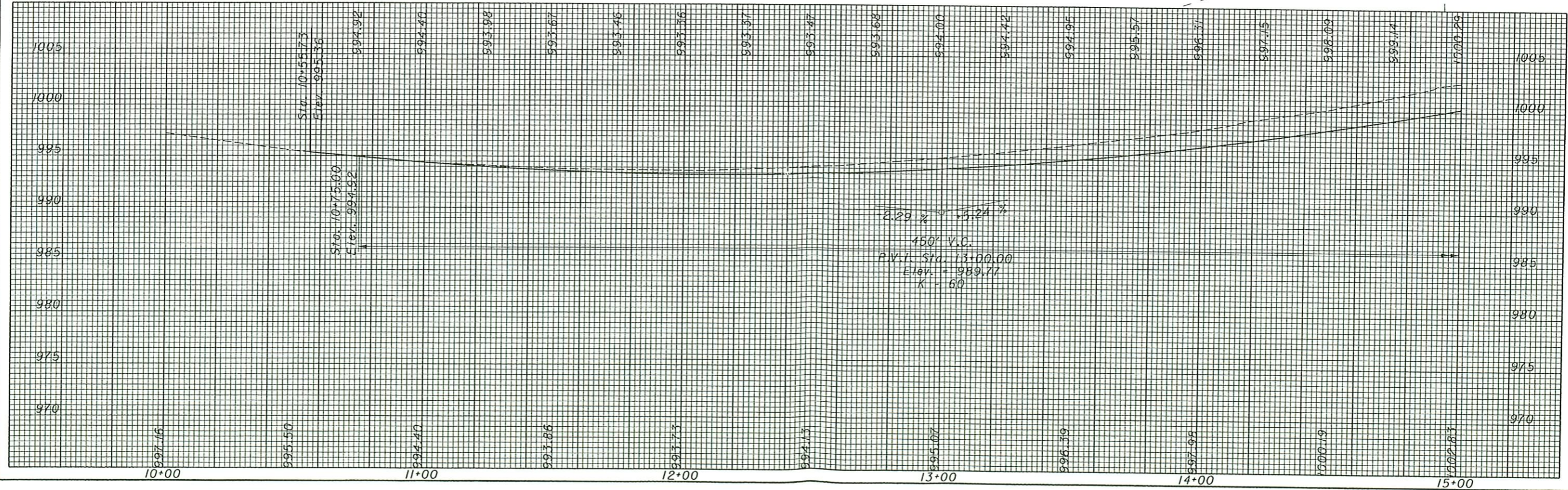
**LEGEND**

- ① ITEM 448 - 1.25" ASPHALT CONCRETE SURFACE COURSE, TYPE 1, PG64-22
- ② ITEM 448 - 1.75" ASPHALT CONCRETE INTERMEDIATE COURSE, TYPE 2, PG64-22
- ③ ITEM 408 - BITUMINOUS PRIME COAT (RATE = 0.4 GAL./SQ.YD.)
- ④ ITEM 301 - 8" BITUMINOUS AGGREGATE BASE, PG64-22
- ⑤ ITEM 304 - 6" AGGREGATE BASE
- ⑥ ITEM 870 - SEEDING & MULCHING
- ⑦ ITEM 606 - GUARDRAIL, TYPE 5
- ⑧ ITEM 407 - TACK COAT (SEE GENERAL NOTES)
- ⑨ ITEM 407 - TACK COAT FOR INTERMEDIATE COURSE (SEE GENERAL NOTES)
- ⑩ ITEM 203 - SUBGRADE COMPACTION
- ⑪ ITEM 605 - AGGREGATE DRAINS
- ⑫ ITEM 448 - 2" ASPHALT CONCRETE SURFACE COURSE, TYPE 1, PG64-22
- ⑬ ITEM 452 - 6" PLAIN PORTLAND CEMENT CONCRETE PAVEMENT

**NOTES**

- Ⓐ VARIES, SEE SHEET \_\_\_ FOR SUPERELEVATION TABLE.
- Ⓑ AGGREGATE DRAIN SLOPE = -0.083

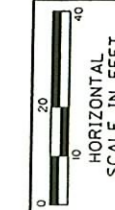
PROJ. DESCR.: 0D0T  
 USER: JT  
 PLOTTED: 06/08/2001 AT 01:23:00 PM  
 9:\fr\proj\57391-12\cad\typical.dgn

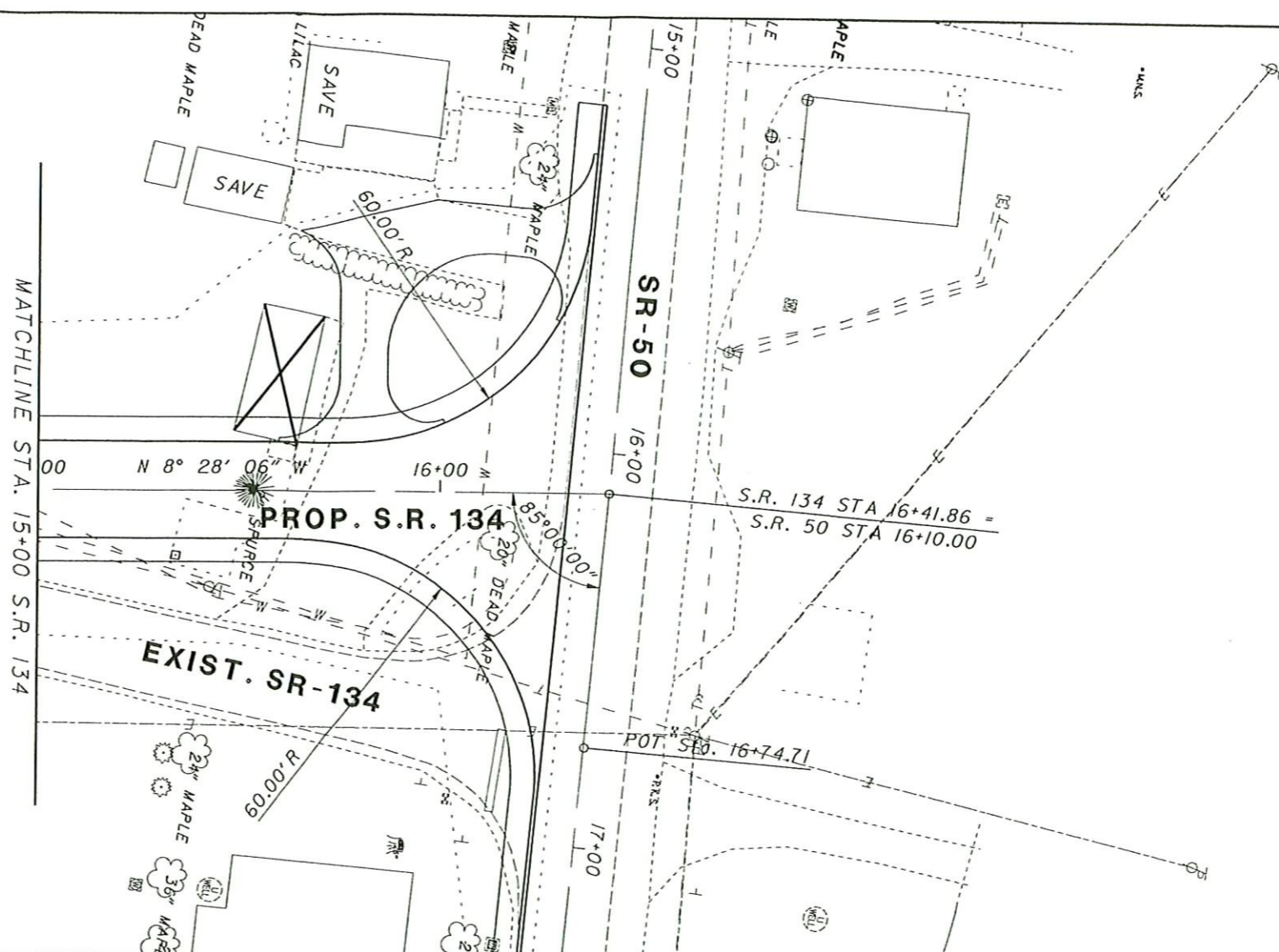
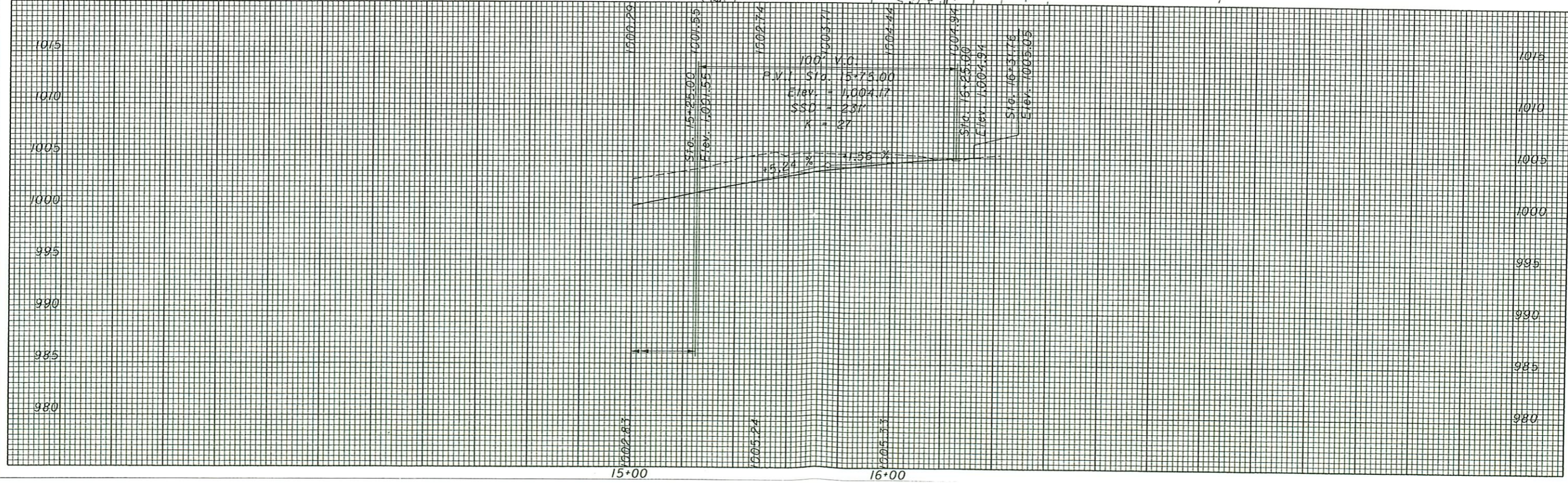


HIG-50-2.18

PLAN AND PROFILE  
 S.R. 134 STA. 10+00 TO STA. 15+00

CALCULATED JCS  
 CHECKED T DW



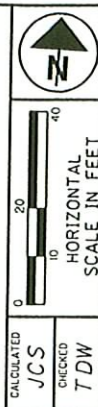
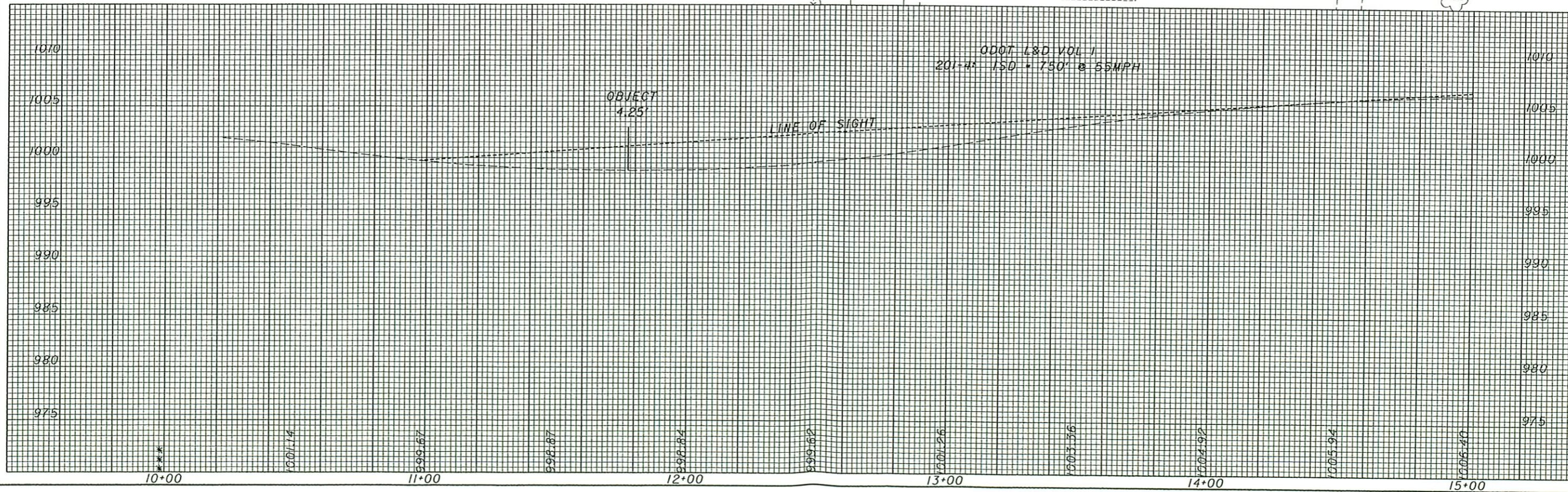
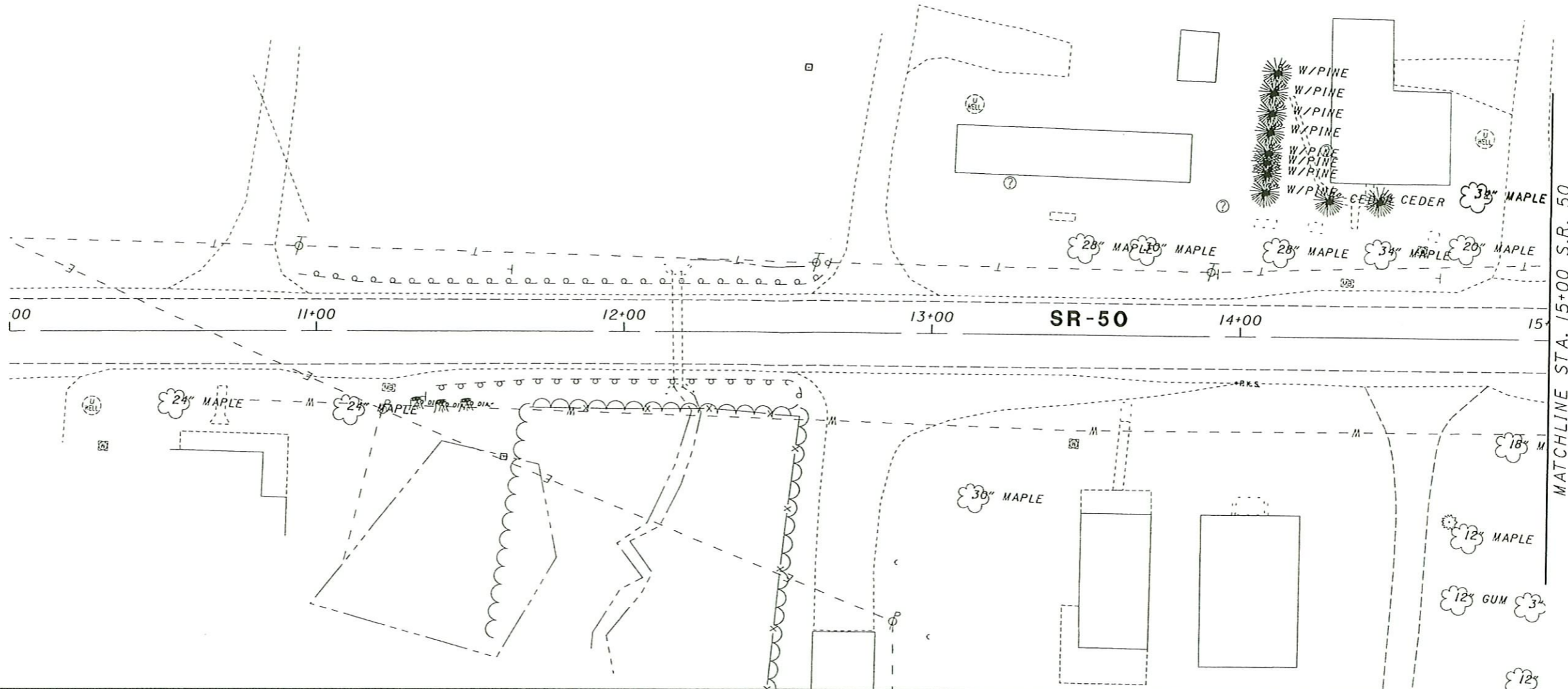


HIG-50-2.18

PLAN AND PROFILE  
 S.R. 134 STA. 15+00 TO END

CALCULATED JCS  
 CHECKED T.D.W.



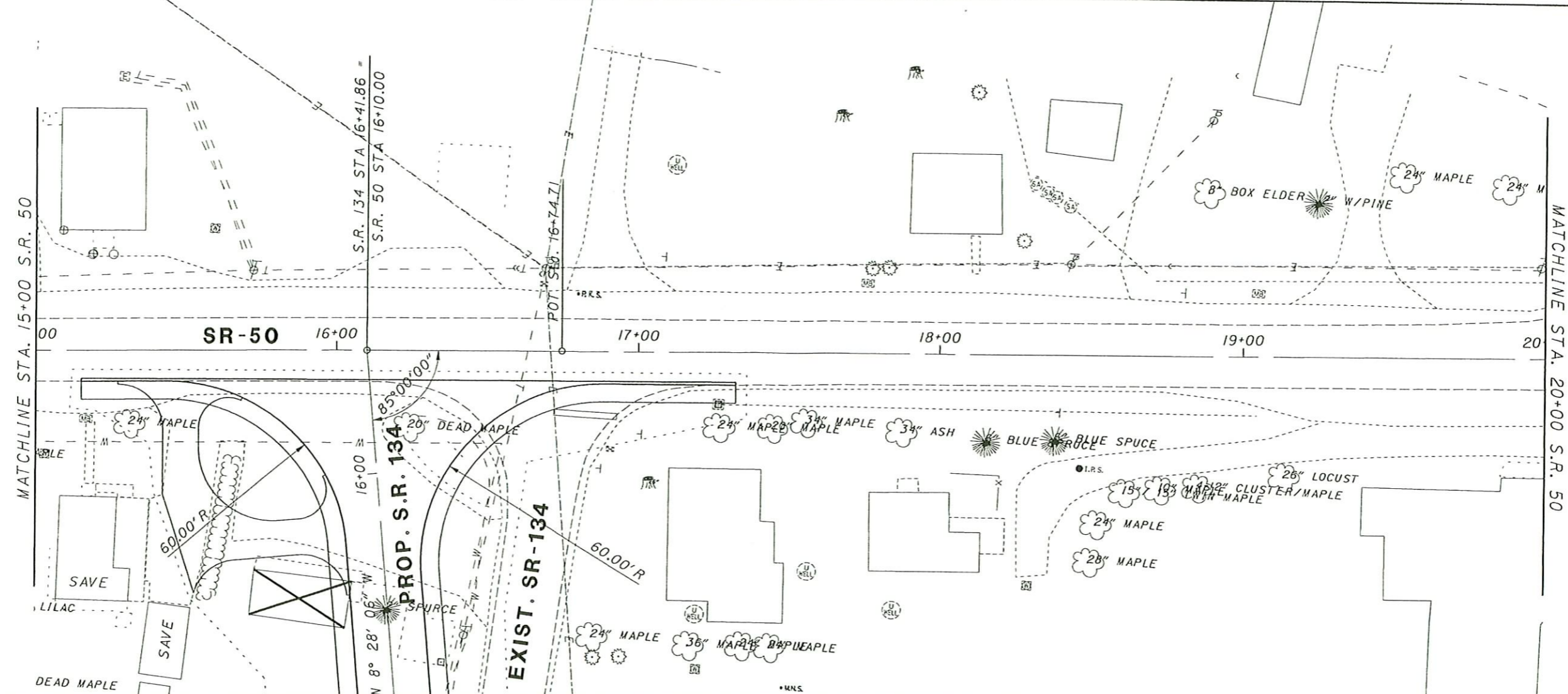
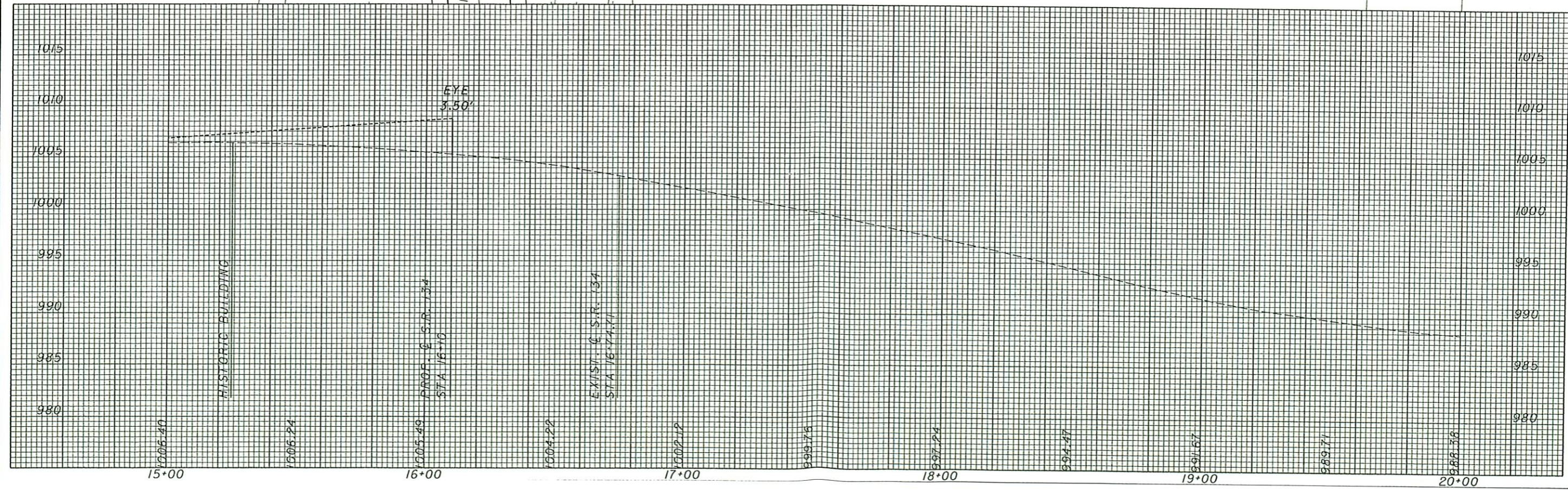


CALCULATED JCS  
CHECKED TDW

PLAN AND PROFILE  
S.R. 50 STA. 10+00 TO STA. 15+00

HIG-50-2.18





CALCULATED  
 JCS  
 CHECKED  
 TDW

PLAN AND PROFILE  
 S.R. 50 STA. 15+00 TO STA. 20+00

HIG-50-2.18



HORIZONTAL  
 SCALE IN FEET

