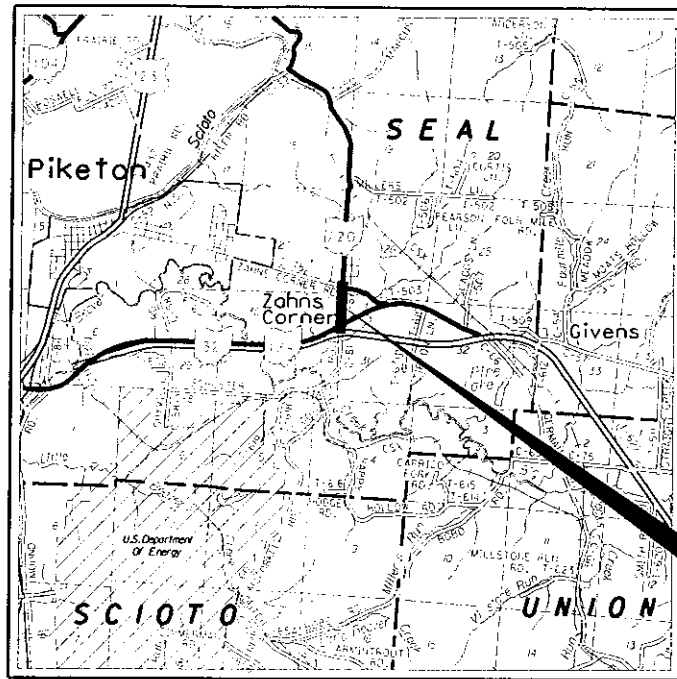


STATE OF OHIO
DEPARTMENT OF TRANSPORTATION

PIK-C.R. 81
SCHUSTER RD STUDY
SEAL TOWNSHIP
PIKE COUNTY



LOCATION MAP

LATITUDE: N39°03'30" LONGITUDE: W82°57'45"



PORTION TO BE IMPROVED	
INTERSTATE & DIVIDED HIGHWAY	
UNDIVIDED STATE & FEDERAL ROUTES	
OTHER ROADS	

DESIGN DESIGNATION

CURRENT ADT (2005)	4950
DESIGN YEAR ADT (2025)	6040
DESIGN HOURLY VOLUME (2025)	593
DIRECTIONAL DISTRIBUTION	55%
TRUCKS (24 HOUR B&C)	5%
DESIGN SPEED	60 MPH
LEGAL SPEED	55 MPH

DESIGN FUNCTIONAL CLASSIFICATION -
RURAL MAJOR COLLECTOR

DESIGN EXCEPTIONS

NONE

UNDERGROUND UTILITIES
TWO WORKING DAYS
BEFORE YOU DIG
CALL 1-800-362-2764 (TOLL FREE)
OHIO UTILITIES PROTECTION SERVICE
NON-MEMBERS
MUST BE CALLED DIRECTLY

PLAN PREPARED BY:



1201 Dublin Road • Columbus, Ohio 43215-1026
T: 614.221.0840 • F: 614.221.2484
E: inbox@wdpartners.com • wdpartners.com

INDEX OF SHEETS:

TITLE SHEET	1
TYPICAL SECTIONS	2-3
PLAN AND PROFILE - S.R. 220	4-6
CROSS SECTIONS - S.R. 220	7-18
PLAN AND PROFILE - ALTERNATIVE A	19-22
PLAN AND PROFILE - ALTERNATIVE B	23

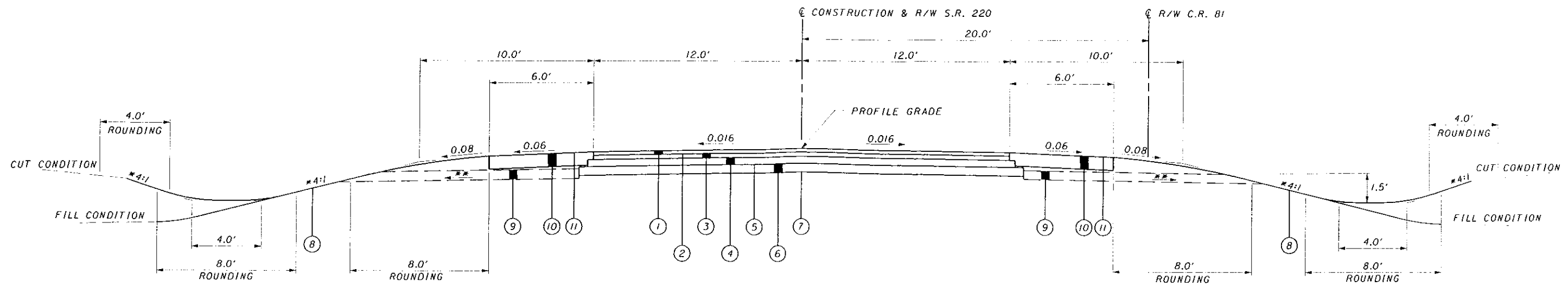
FEDERAL PROJECT NO.

PID NO.
79096

CONSTRUCTION PROJECT NO.

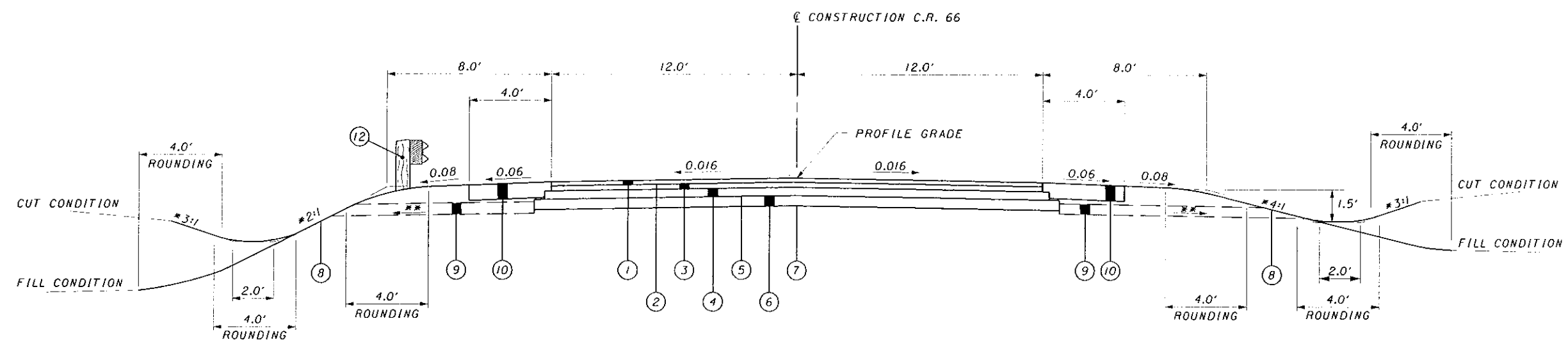
RAILROAD INVOLVEMENT
NONE

PIK-C.R. 81



NORMAL SECTION - S.R. 220

SECTION APPLIES:
 STA. 719+00.00 TO STA. 747+12.77 - 2812.77 FT.
 TOTAL - 2812.77 FT.



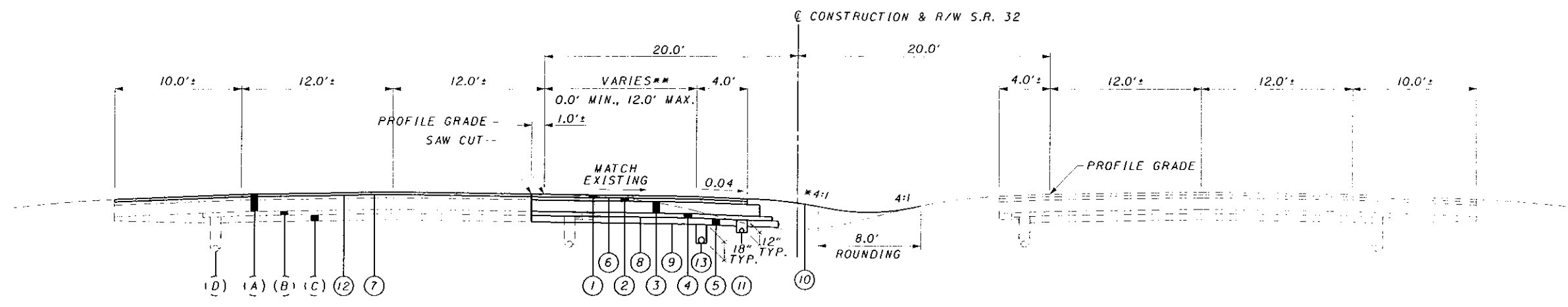
NORMAL SECTION - C.R. 66 - ALTERNATIVE A

SECTION APPLIES:
 STA. 16+00.00 TO STA. 48+00.00 - 3200.00 FT.
 TOTAL - 3200.00 FT.

* ACTUAL SLOPES SHALL CONFORM TO PLAN CROSS SECTIONS.
 ** 0.04 MINIMUM 0.08 DESIRABLE
 *** SEE PLAN AND PROFILE SHEET FOR LANE WIDTH TAPERS

LEGEND

- ① ITEM 448 1 1/4" ASPHALT CONCRETE SURFACE COURSE, TYPE 1, PG64-22
- ② ITEM 407 TACK COAT FOR INTERMEDIATE COURSE, 0.04 GAL/SQ YD
- ③ ITEM 448 1 3/4" ASPHALT CONCRETE INTERMEDIATE, TYPE 2, PG64-22
- ④ ITEM 301 5" ASPHALT CONCRETE BASE, PG64-22
- ⑤ ITEM 408 PRIME COAT, 0.40 GAL/SQ YD
- ⑥ ITEM 304 6" AGGREGATE BASE
- ⑦ ITEM 204 SUBGRADE COMPACTION
- ⑧ ITEM 659 SEEDING AND MULCHING
- ⑨ ITEM 605 AGGREGATE DRAINS
- ⑩ ITEM 304 8" AGGREGATE BASE
- ⑪ ITEM 422 CHIP SEAL WITH POLYMER BINDER
- ⑫ ITEM 606 GUARDRAIL, TYPE 5



NORMAL SECTION - S.R. 32 - ALTERNATIVE B

SECTION APPLIES:
 STA. 1417+85.00 TO STA. 1432+60.00 - 1415.00 FT.
 TOTAL - 1415.00 FT.

* ACTUAL SLOPES SHALL CONFORM TO PLAN CROSS SECTIONS.
 ** SEE PLAN SHEETS FOR LANE WIDTH TAPERS.

LEGEND

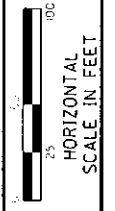
- ① ITEM 446 1/4" ASPHALT CONCRETE SURFACE COURSE, TYPE 1, PG64-22
- ② ITEM 446 1 3/4" ASPHALT CONCRETE INTERMEDIATE COURSE, TYPE 2, PG64-22
- ③ ITEM 301 11" ASPHALT CONCRETE BASE, PG64-22
- ④ ITEM 308 4" ASPHALT TREATED FREE DRAINING BASE
- ⑤ ITEM 304 6" AGGREGATE BASE
- ⑥ ITEM 407 TACK COAT FOR INTERMEDIATE COURSE, 0.075 GAL./SQ. YD.
- ⑦ ITEM 407 TACK COAT, 0.075 GAL./SQ. YD.
- ⑧ ITEM 408 PRIME COAT, 0.40 GAL./SQ. YD.
- ⑨ ITEM 204 SUBGRADE COMPACTION
- ⑩ ITEM 659 SEEDING AND MULCHING
- ⑪ ITEM 605 4" SHALLOW PIPE UNDERDRAINS WITH FABRIC WRAP, AS PER PLAN
- ⑫ ITEM 254 PAVEMENT PLANING, ASPHALT CONCRETE (DEPTH - 1/4")
- ⑬ ITEM 605 6" SHALLOW PIPE UNDERDRAINS

EXISTING LEGEND

- (A) EXISTING 14"± ASPHALT PAVEMENT
- (B) EXISTING 4"± FREE DRAINING BASE
- (C) EXISTING 6"± SUBBASE
- (D) EXISTING 6" PIPE UNDERDRAIN

NOTE

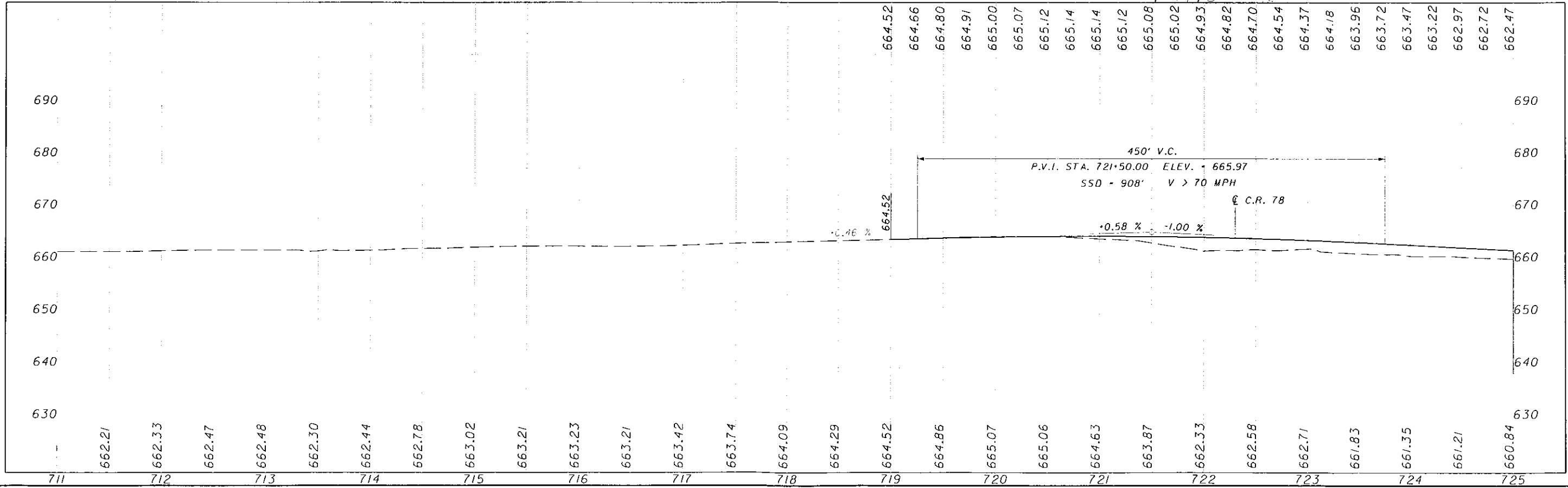
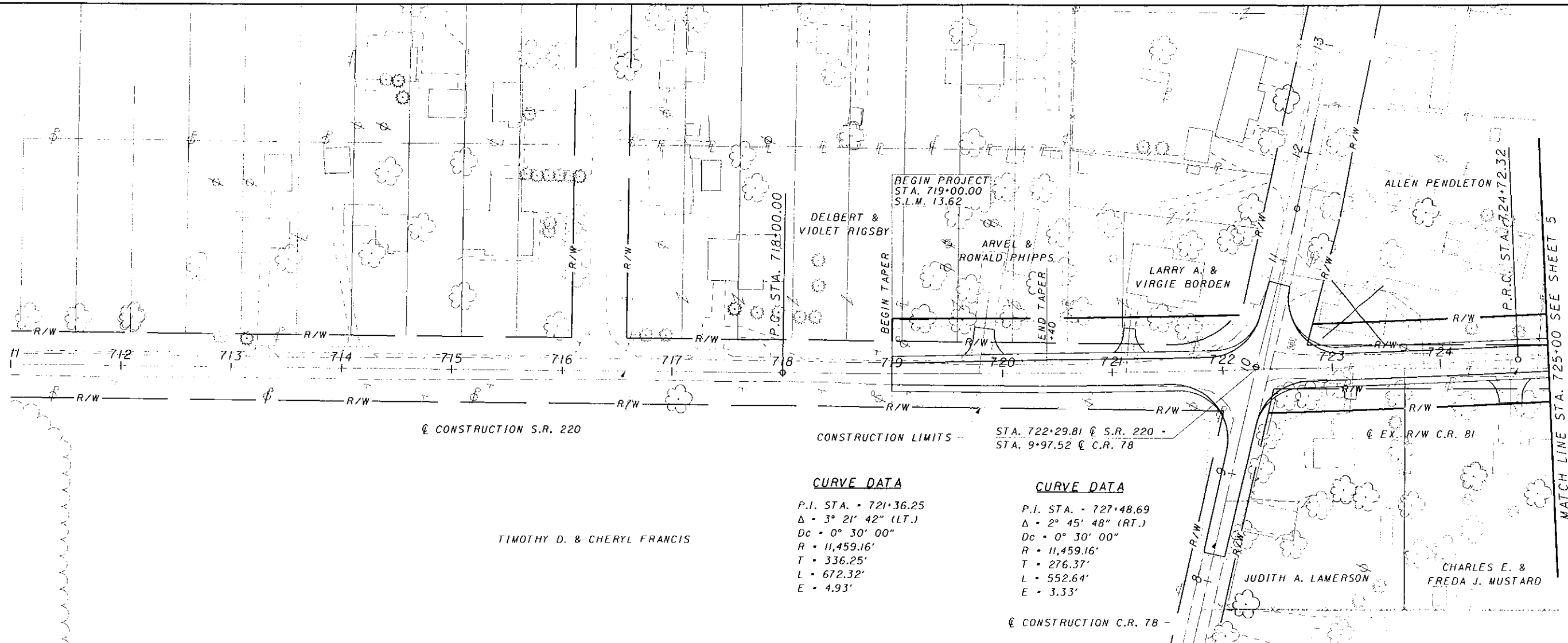
EXISTING PAVEMENT EDGES SHALL BE SAW CUT TO LOCATE A SOUND PAVEMENT EDGE PER SEC. 203.04(E) OF THE 2002 CMS.

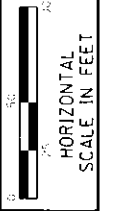
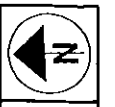


TWG
CHECKER
FJR

PLAN AND PROFILE - S.R. 220
STA. 711+00 TO STA. 725+00

PIK - C.R. 81

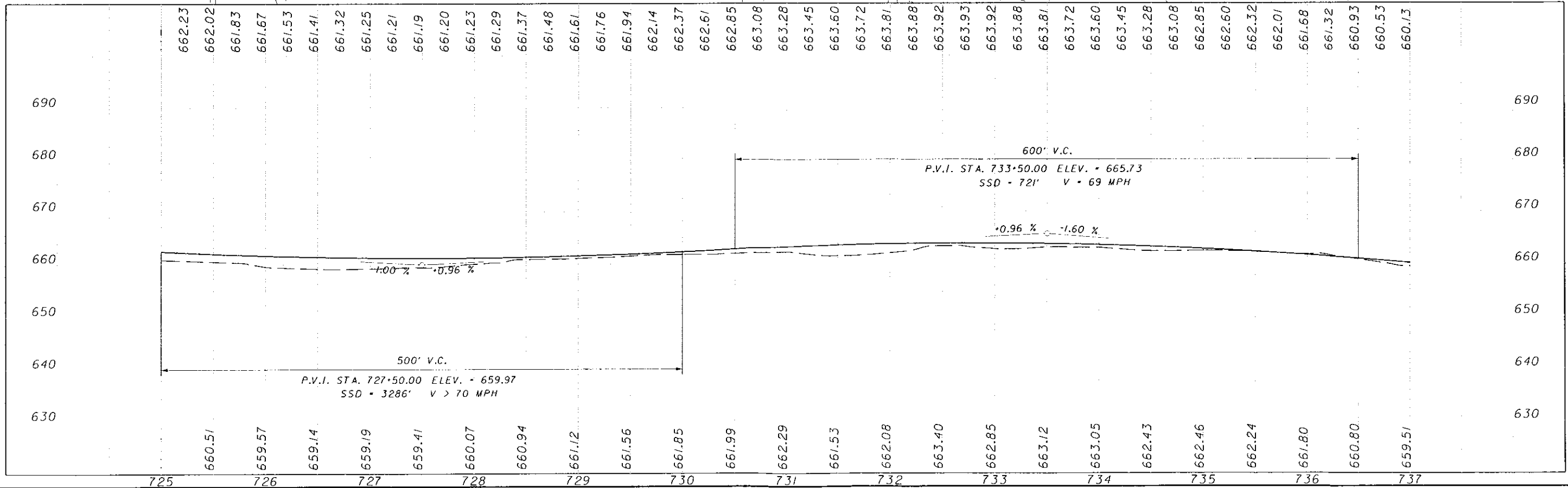
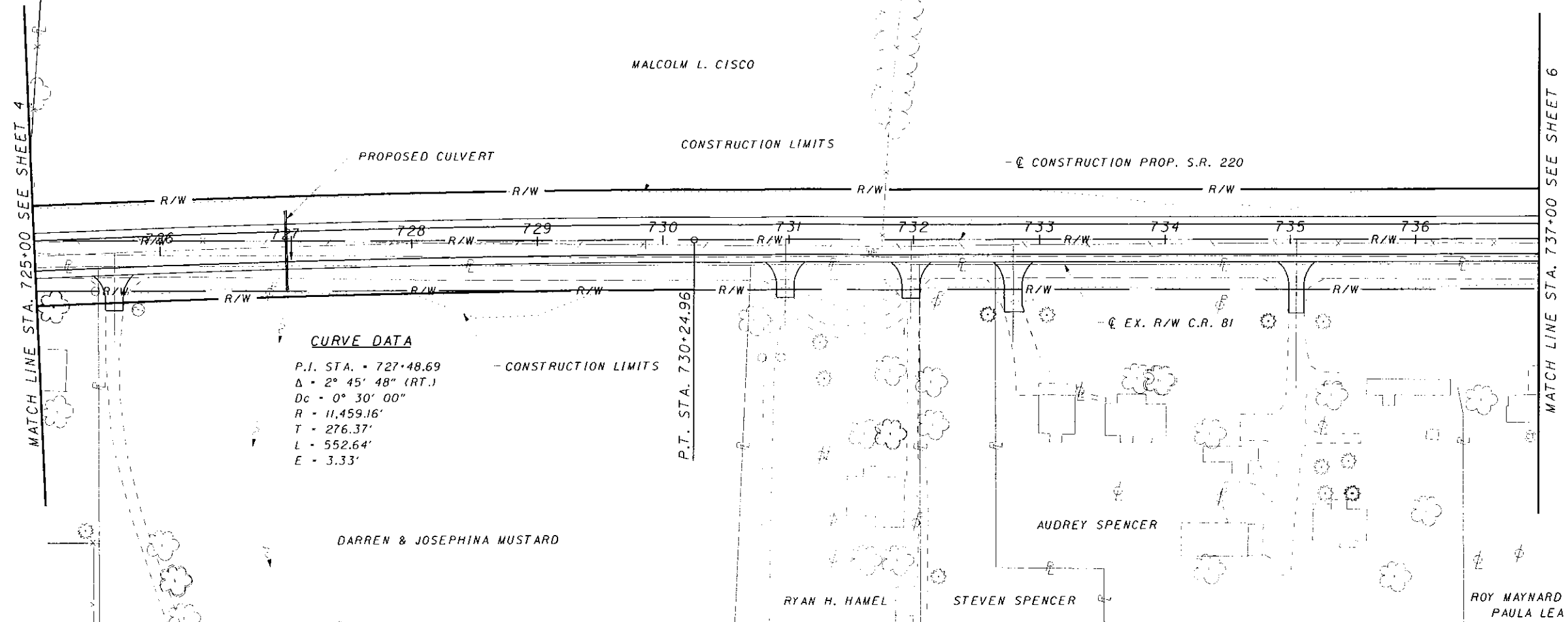




DATE: TWG
BY: FJR

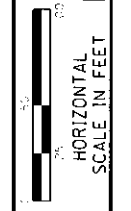
**PLAN AND PROFILE - S.R. 220
STA. 725+00 TO STA. 737+00**

PIK-C.R. 81



MATCH LINE STA. 725+00 SEE SHEET 4

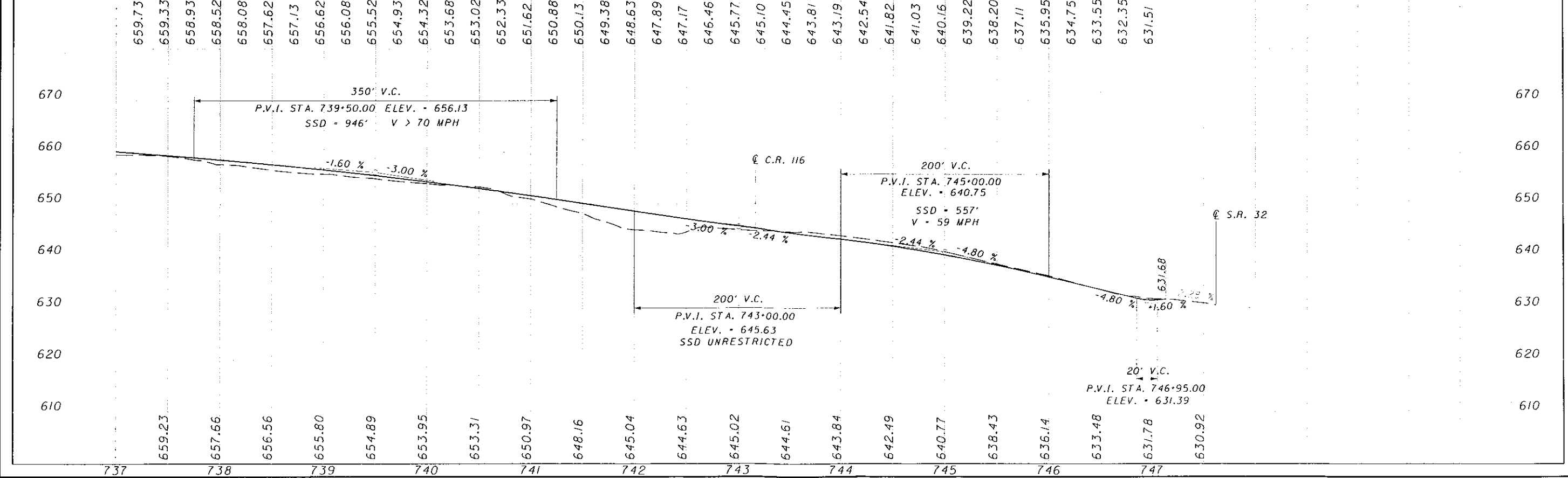
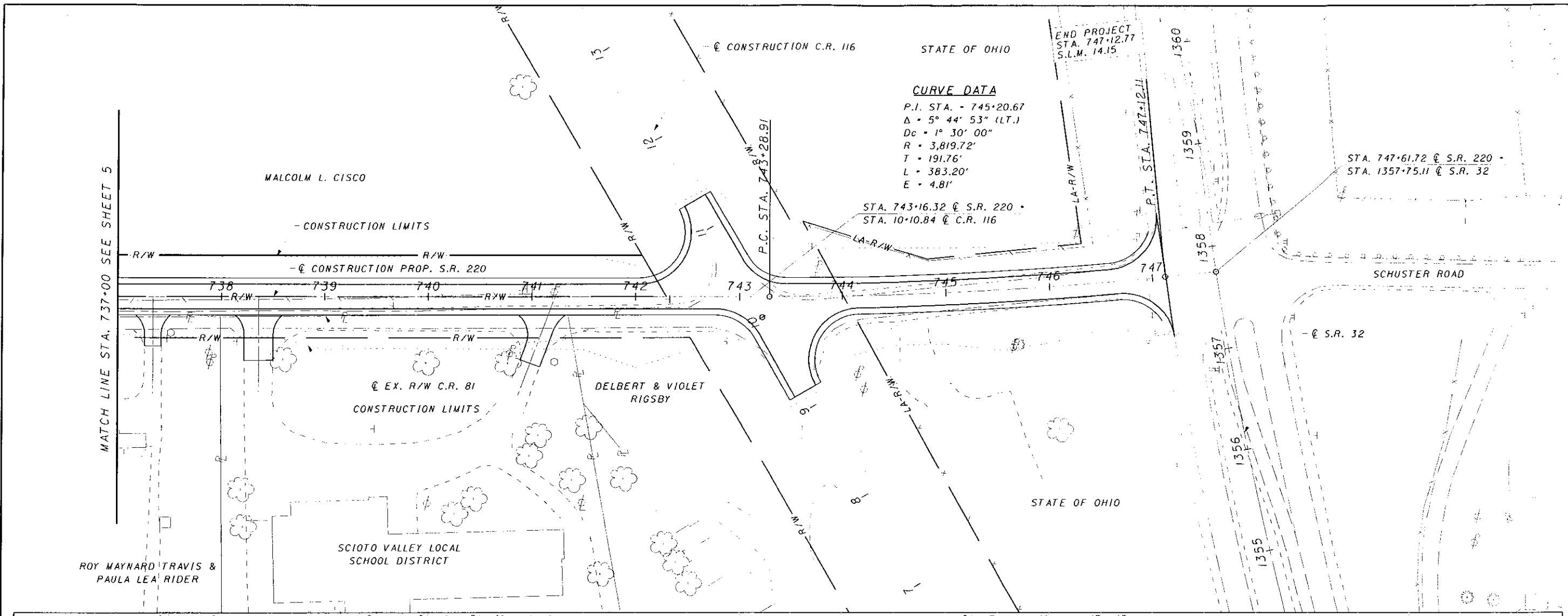
MATCH LINE STA. 737+00 SEE SHEET 6

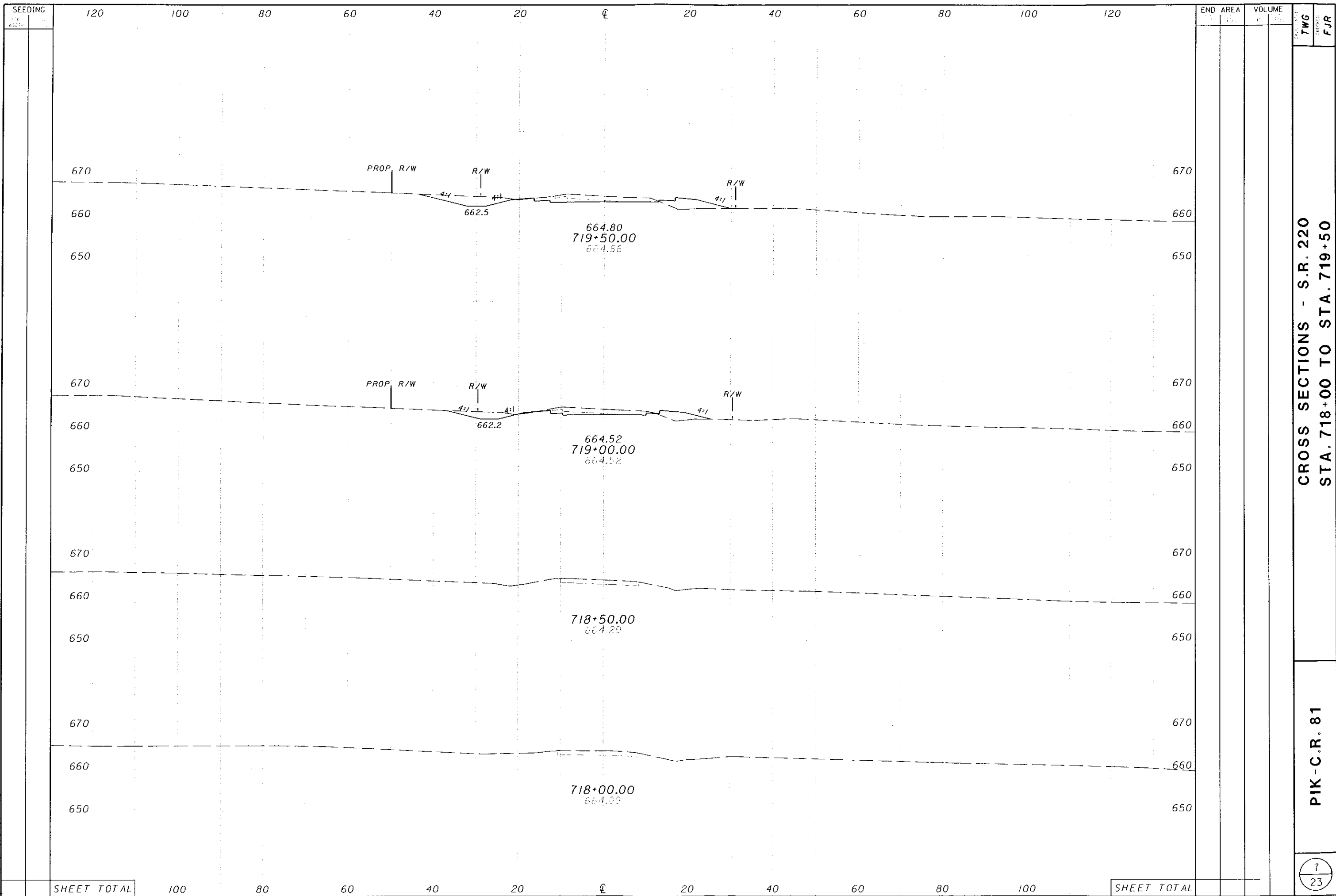


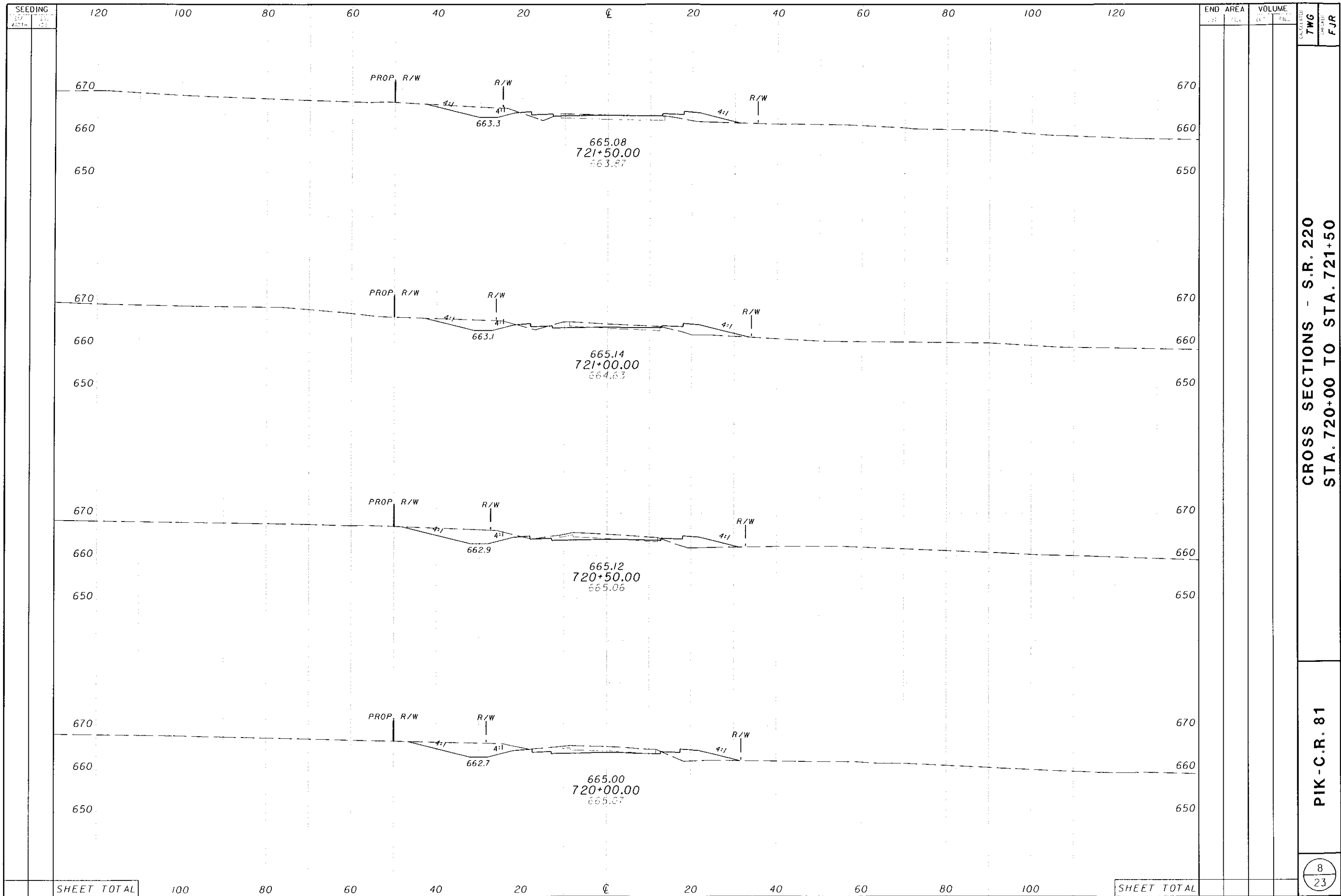
TWG: FJR

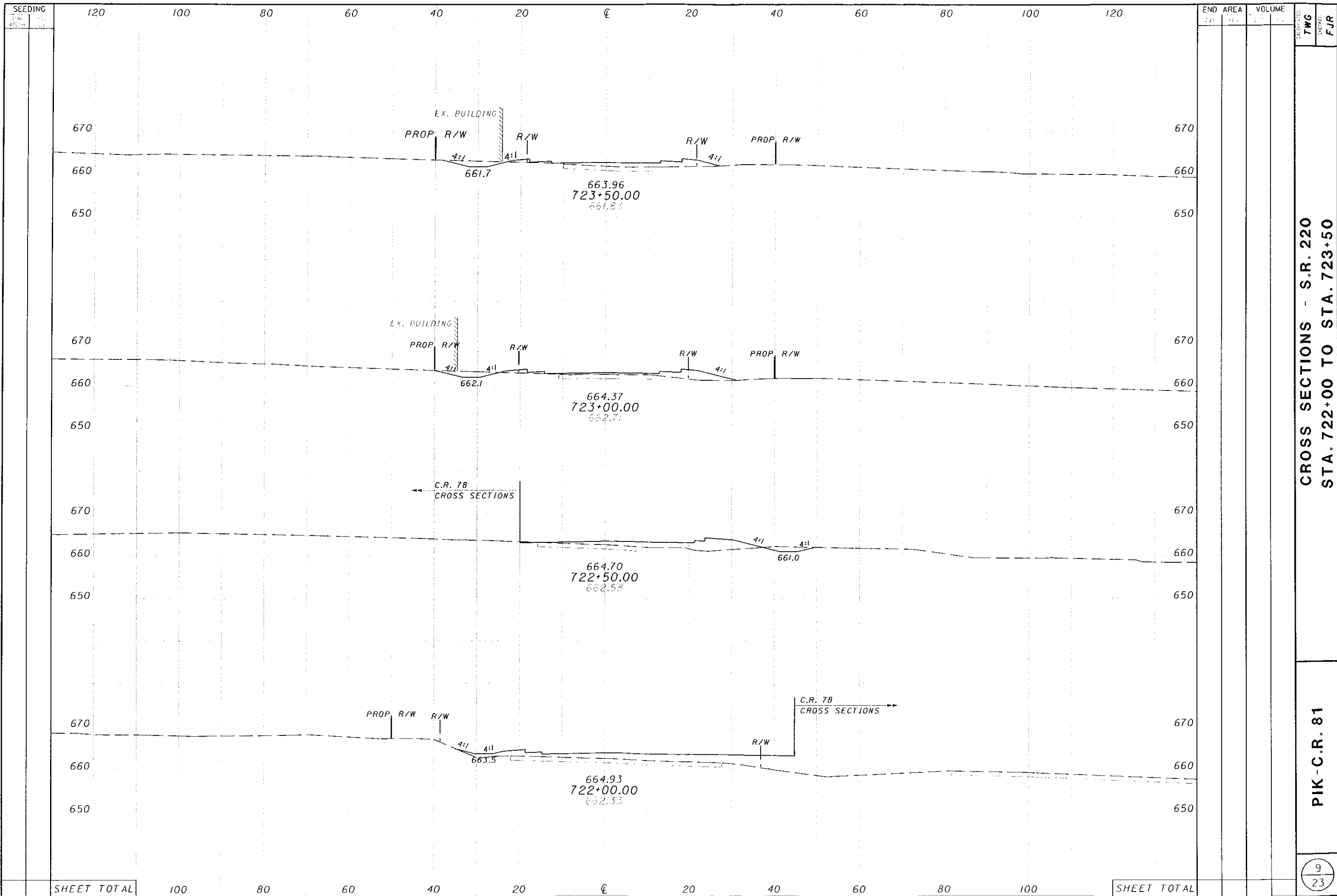
PLAN AND PROFILE - S.R. 220
STA. 737+00 TO STA. 747+50

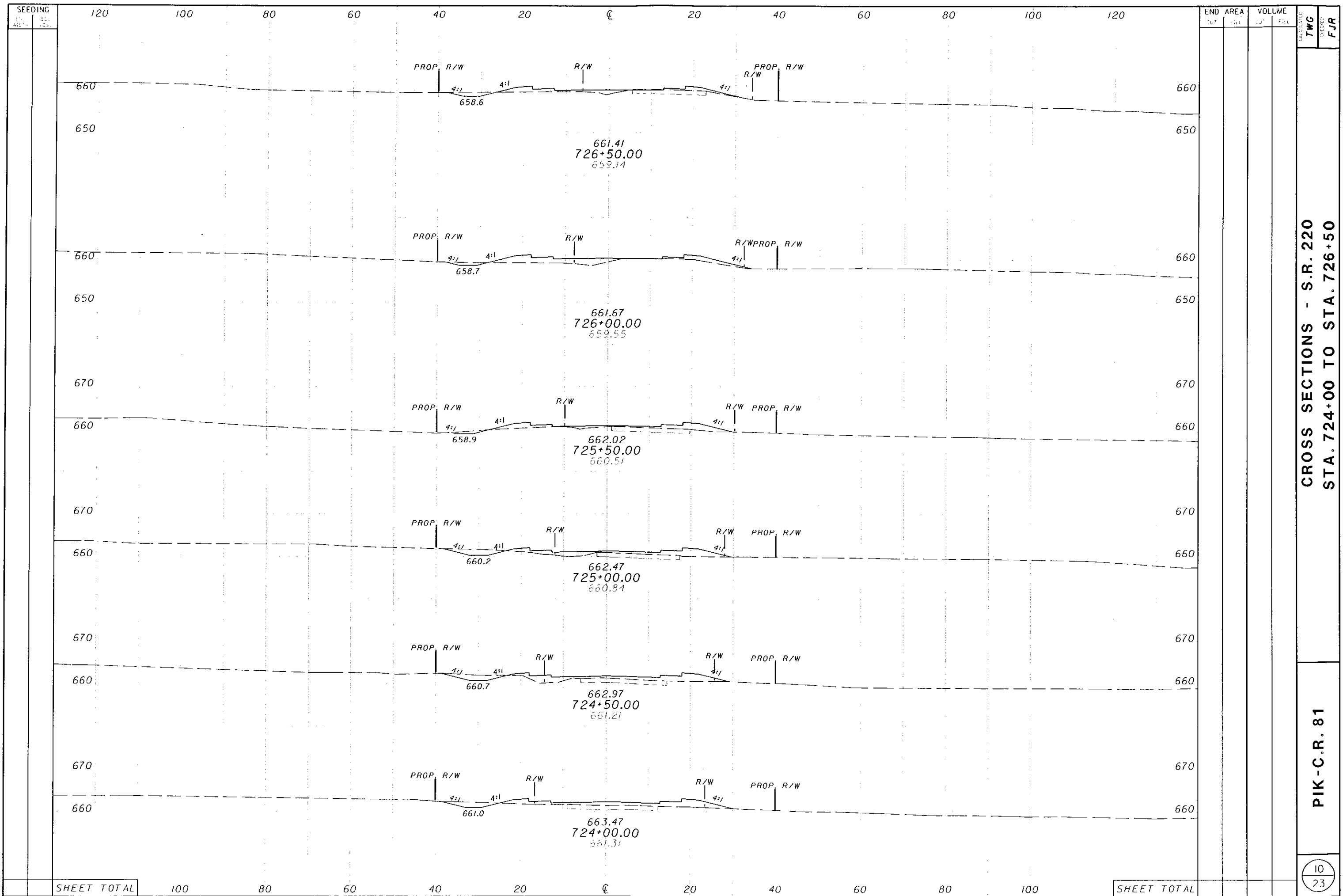
PIK-C.R. 81









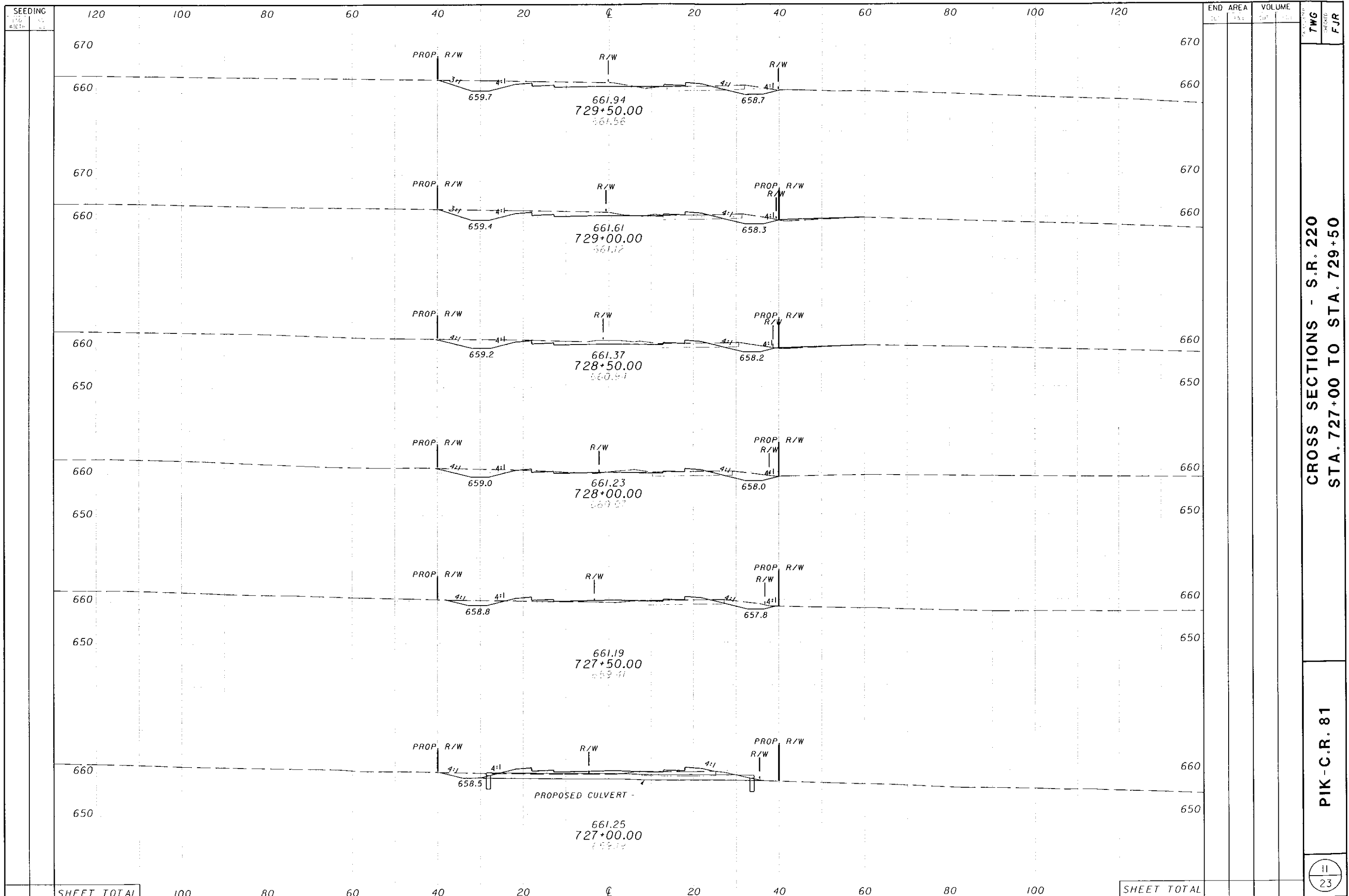


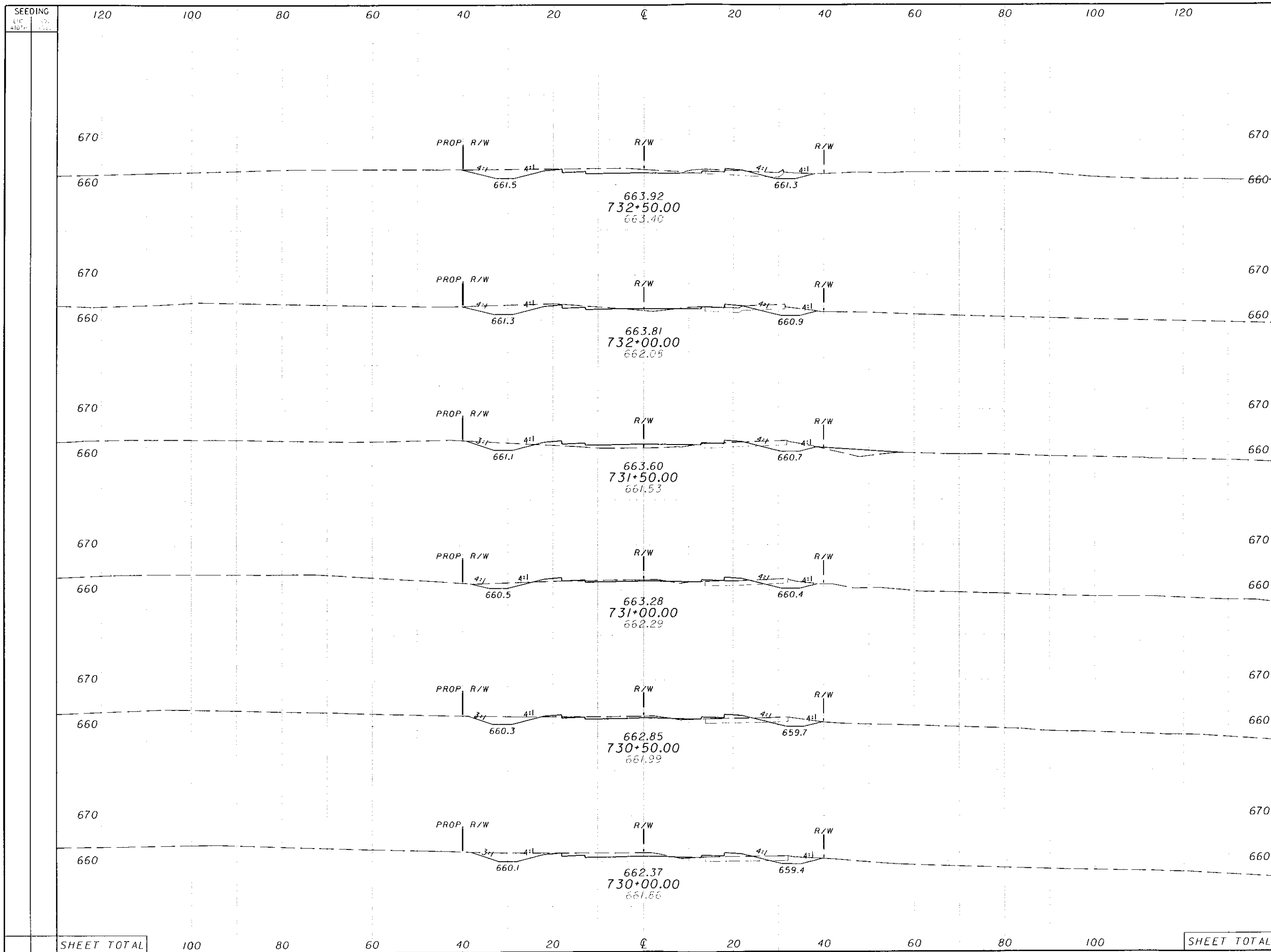
SHEET TOTAL

100 80 60 40 20 0 20 40 60 80 100

SHEET TOTAL

END AREA		VOLUME		TWC	FJR	
CUT	FILL	CUT	FILL			
						CALCULATED BY TWC CHECKED BY FJR
CROSS SECTIONS - S.R. 220 STA. 724+00 TO STA. 726+50						
PIK-C.R. 81						
<table border="1" style="margin: auto;"> <tr> <td>10</td> </tr> <tr> <td>23</td> </tr> </table>					10	23
10						
23						



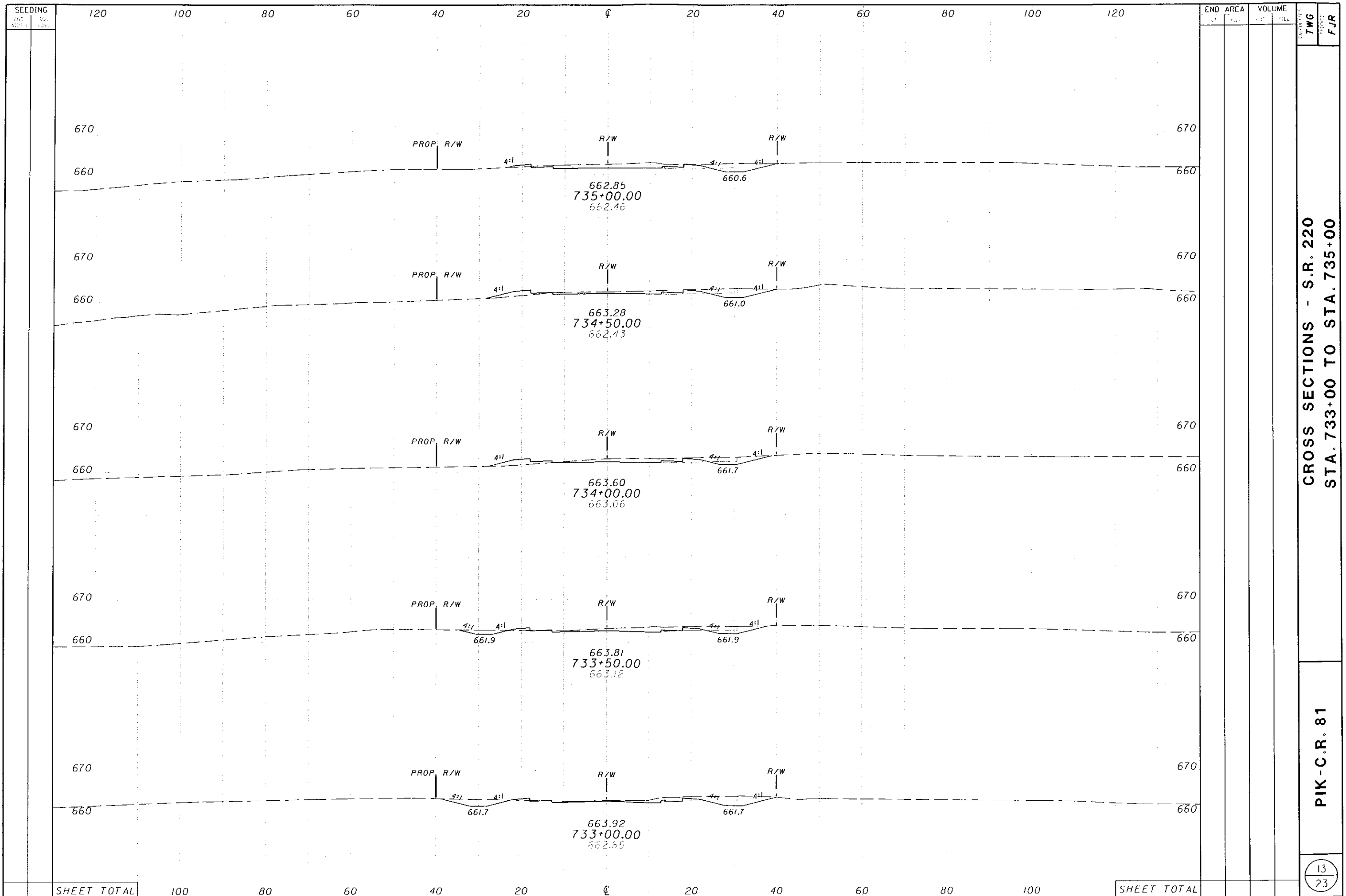


END AREA		VOLUME	
CUT	FILL	CUT	FILL

CROSS SECTIONS - S.R. 220
STA. 730+00 TO STA. 732+50

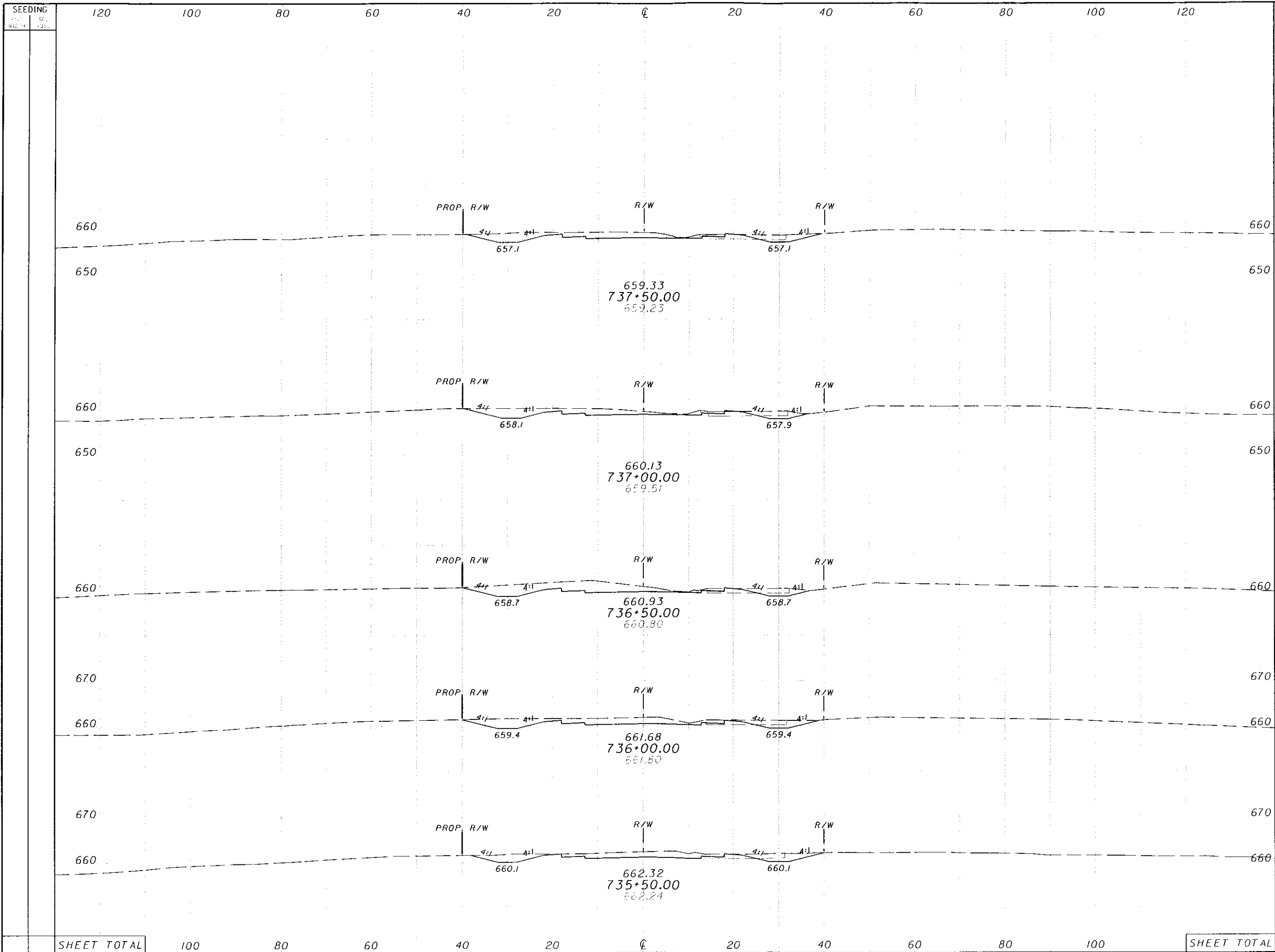
PIK-C.R. 81

12
23



CROSS SECTIONS - S.R. 220
 STA. 733+00 TO STA. 735+00

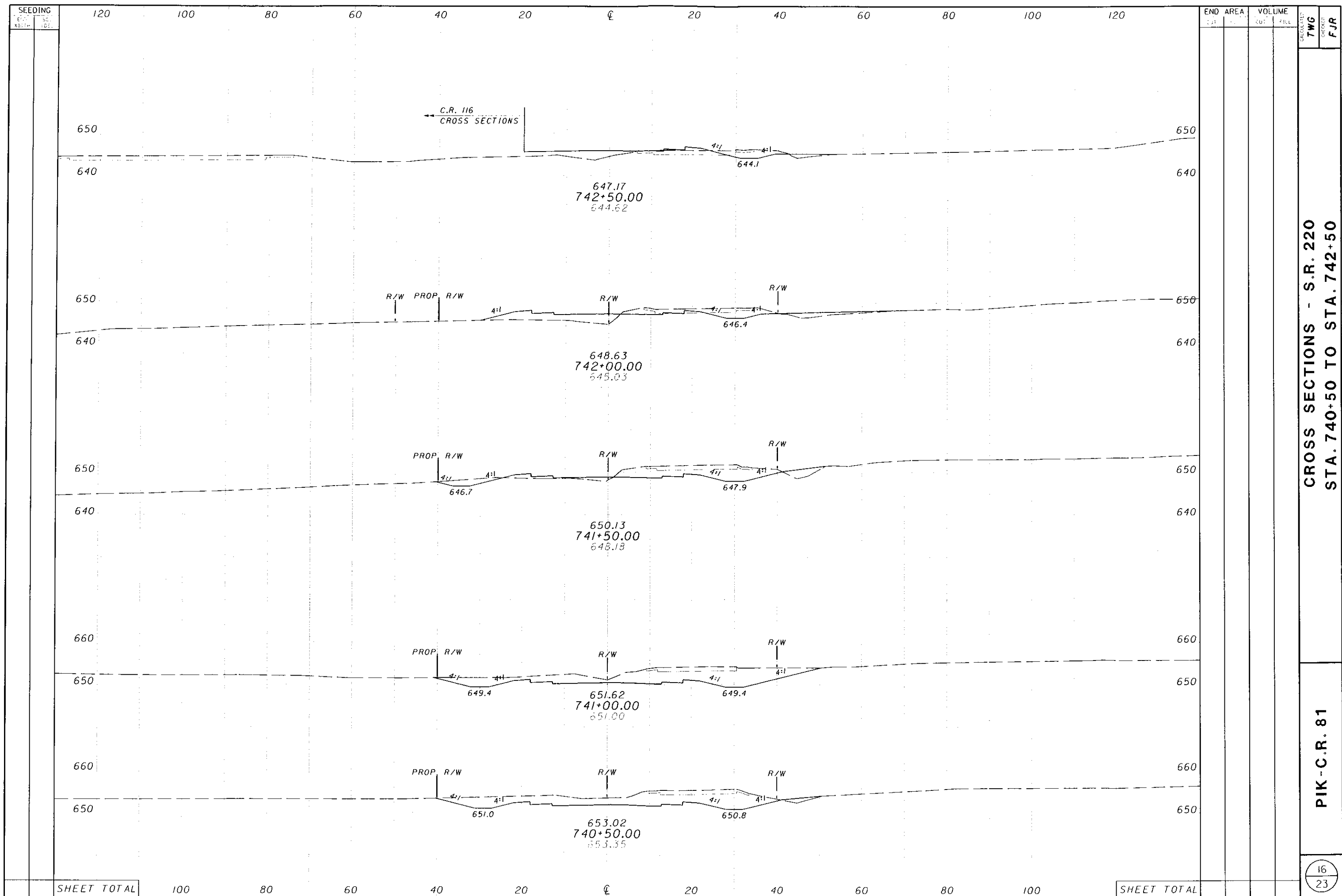
PIK-C.R. 81



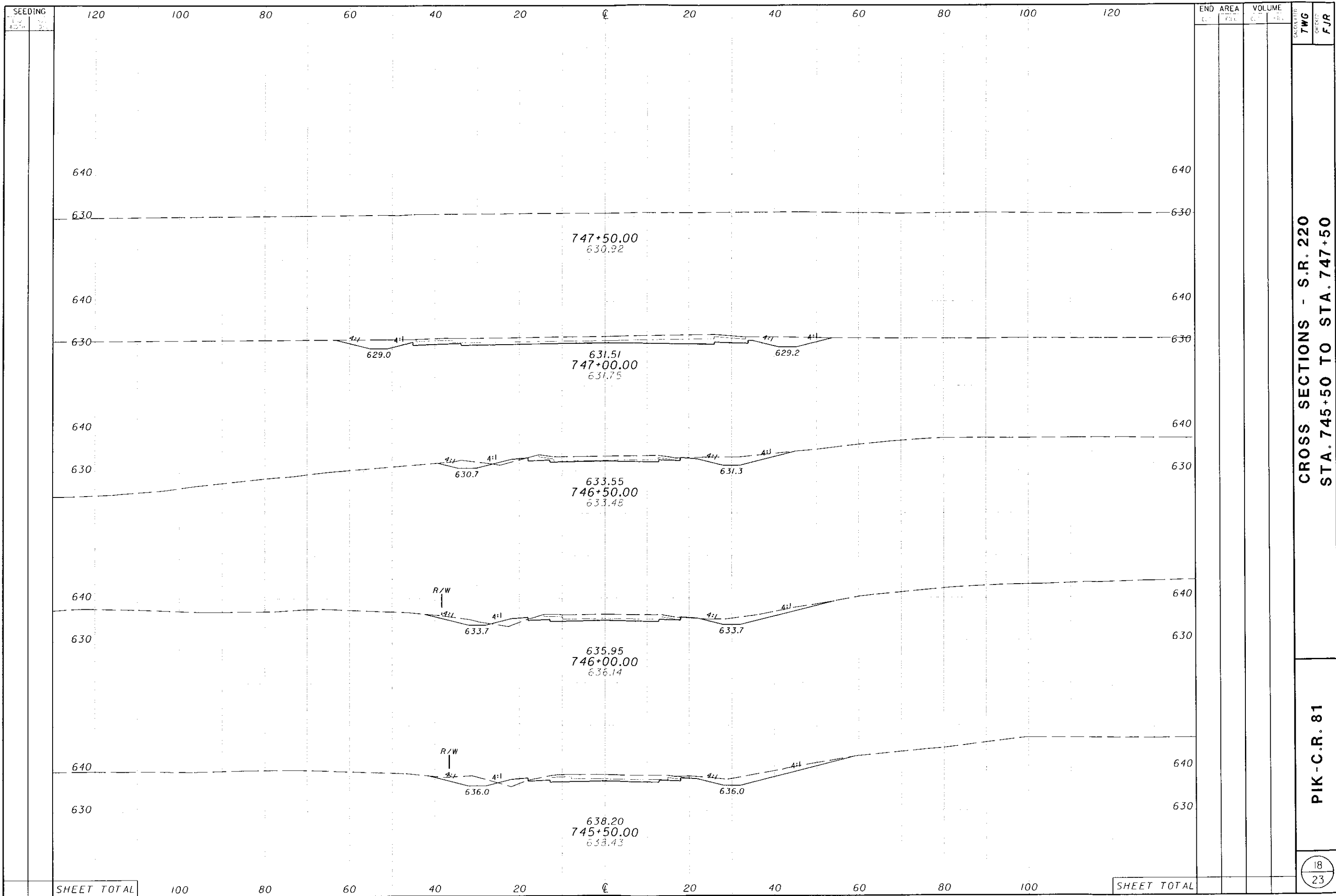
CROSS SECTIONS - S.R. 220
 STA. 735+50 TO STA. 737+50

PIK-C.R. 81

14
23

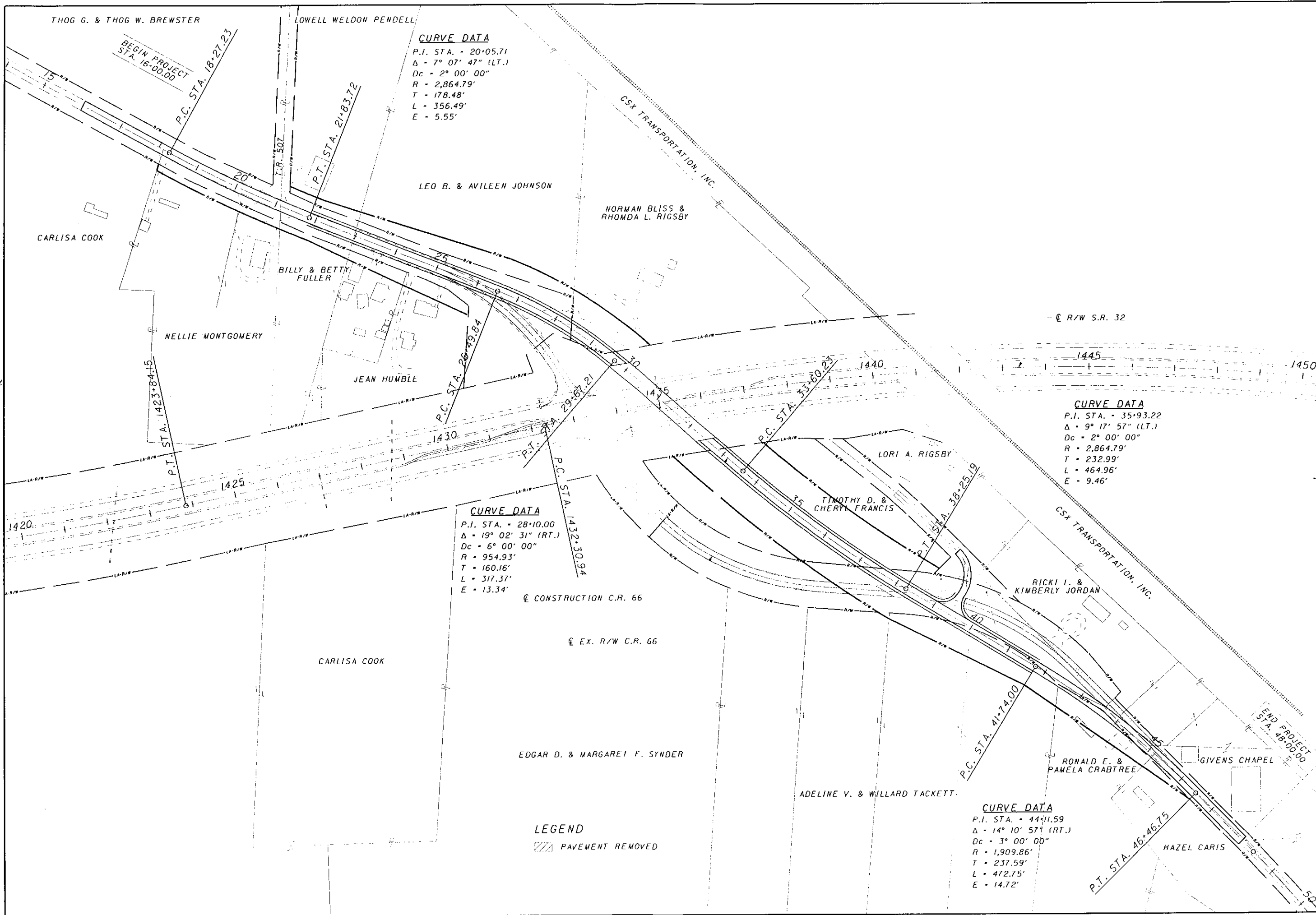


END STA	AREA	VOLUME		CHECKER
		CUT	FILL	
				TWG
				FJR
CROSS SECTIONS - S.R. 220 STA. 740+50 TO STA. 742+50				
PIK-C.R. 81				
16 23				



CROSS SECTIONS - S.R. 220
STA. 745+50 TO STA. 747+50

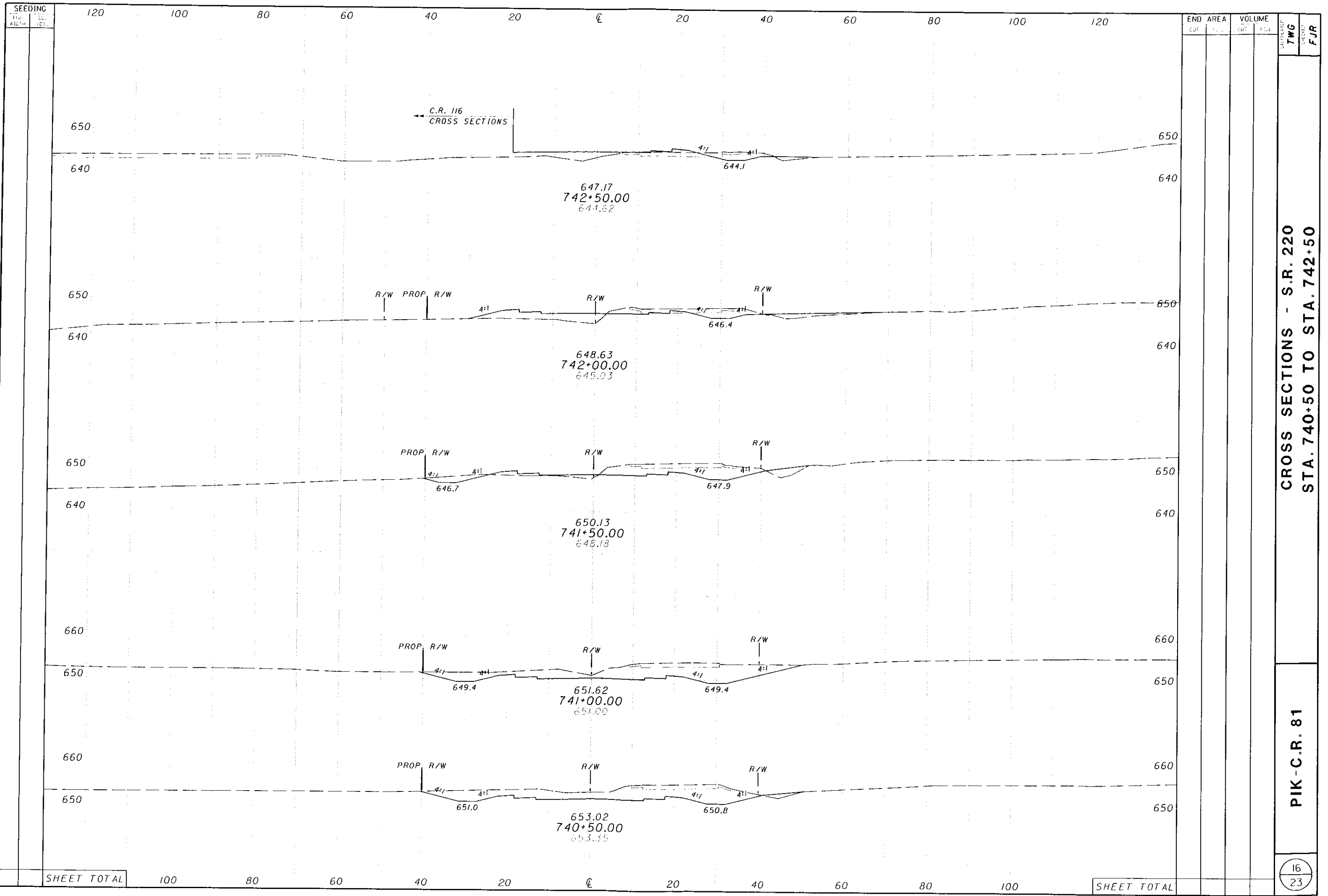
PIK-C.R. 81



SCALE IN FEET
 0 50 100 200
 HORIZONTAL
 SCALE IN FEET

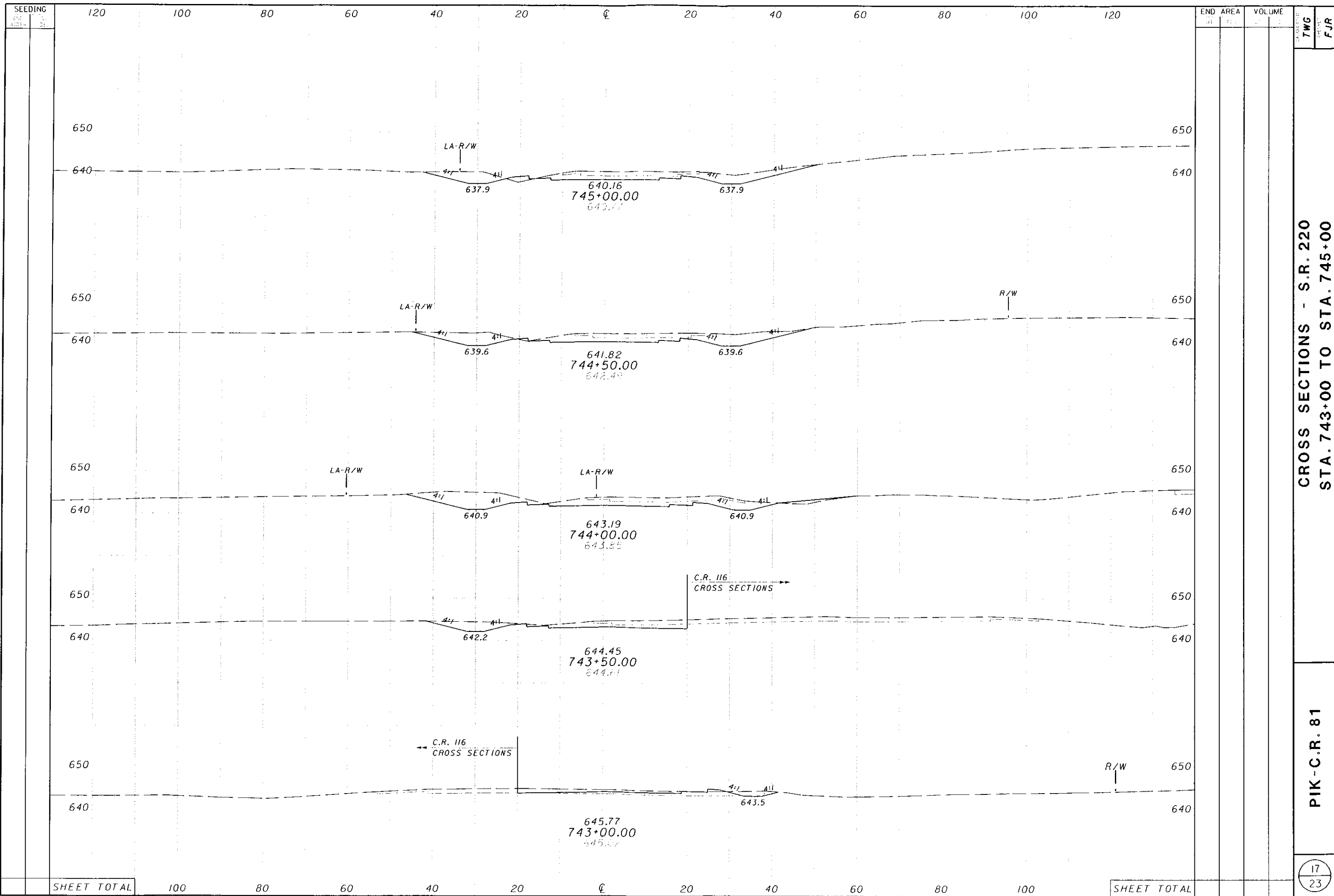
CHECKED: TWG
 FJR

**SCHEMATIC PLAN
 ALTERNATIVE A**



CROSS SECTIONS - S.R. 220
 STA. 740+50 TO STA. 742+50

PIK-C.R. 81



CROSS SECTIONS - S.R. 220
STA. 743+00 TO STA. 745+00

PIK-C.R. 81

SEEDING

END	AREA	VOLUME

SHEET TOTAL

SHEET TOTAL

THOG G. & THOG W. BREWSTER

LOWELL WELDON PENDELL

CURVE DATA

P.I. STA. - 20+05.71
Δ - 7° 07' 47" (LT.)
Dc - 2° 00' 00"
R - 2,864.79'
T - 178.48'
L - 356.49'
E - 5.55'

BEGIN PROJECT
STA. 16+00.00

P.C. STA. 18+27.23

P.T. STA. 21+83.72

LEO B. & AVILEEN JOHNSON

NORMAN BLISS &
RHONDA L. RIGSBY

CARLISA COOK

BILLY & BETTY
FULLER

NELLIE MONTGOMERY

JEAN HUMBLE

P.C. STA. 26+99.84

P.T. STA. 29+67.21

P.C. STA. 1432+30.94

CURVE DATA

P.I. STA. - 28+10.00
Δ - 19° 02' 31" (RT.)
Dc - 6° 00' 00"
R - 954.93'
T - 160.16'
L - 317.37'
E - 13.34'

EX. CONSTRUCTION C.R. 66

EX. R/W C.R. 66

CARLISA COOK

EDGAR D. & MARGARET F. SYNDER

LEGEND

PAVEMENT REMOVED

CSX TRANSPORTATION, INC.

R/W S.R. 32

1445

1450

CURVE DATA

P.I. STA. - 35+93.22
Δ - 9° 17' 57" (LT.)
Dc - 2° 00' 00"
R - 2,864.79'
T - 232.99'
L - 464.96'
E - 9.46'

LORI A. RIGSBY

TIMOTHY D. &
CHERYL FRANCIS

P.C. STA. 38+25.19

RICKI L. &
KIMBERLY JORDAN

RONALD E. &
PAMELA CRABTREE

GIVENS CHAPEL

ADELINE V. & WILLARD TACKETT

CURVE DATA

P.I. STA. - 44+11.59
Δ - 14° 10' 57" (RT.)
Dc - 3° 00' 00"
R - 1,909.86'
T - 237.59'
L - 472.75'
E - 14.72'

HAZEL CARIS

P.C. STA. 41+74.00

P.T. STA. 46+46.75

END PROJECT
STA. 48+00.00

REVISIONS: TWG, FJR

HORIZONTAL SCALE IN FEET

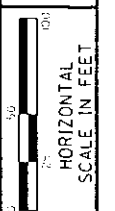
1" = 200'

0 50 100 200

↑ N

**SCHEMATIC PLAN
ALTERNATIVE A**

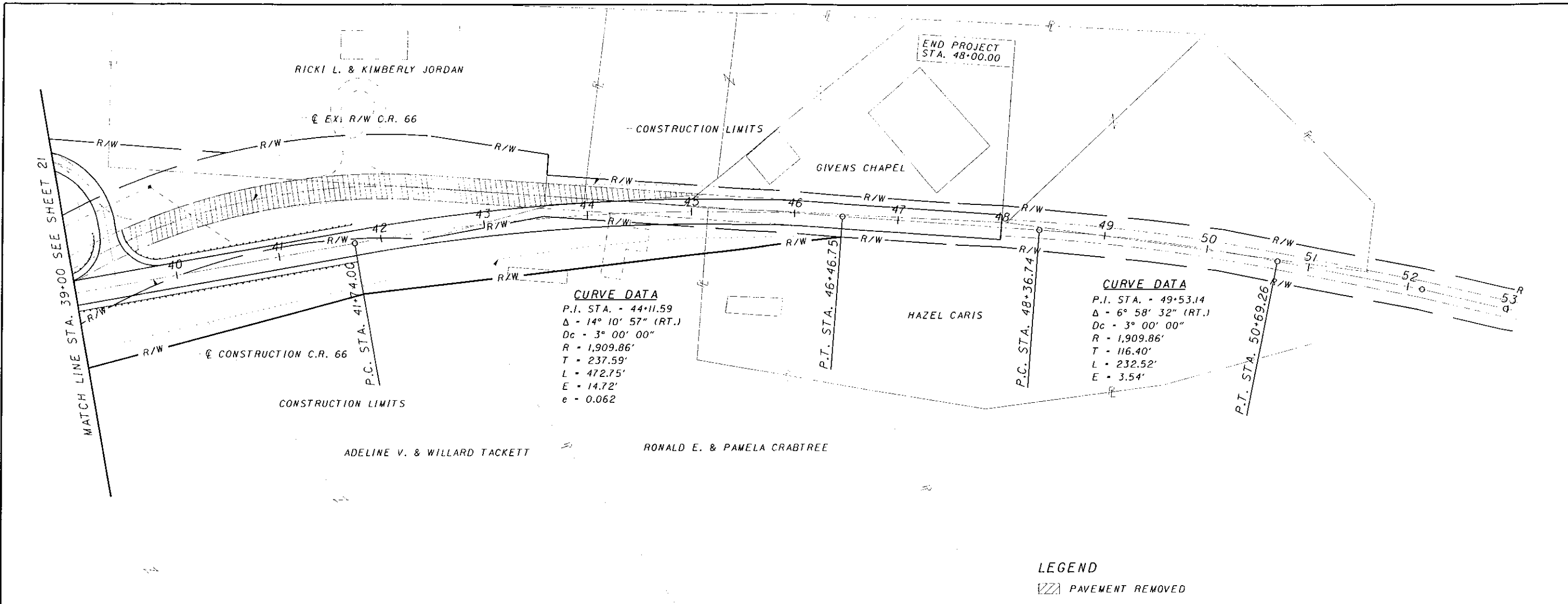
PIK-C.R. 81



TWG
FJR

PLAN AND PROFILE - ALTERNATIVE A
STA. 39+00 TO STA. 53+00

PIK-C.R. 81



CURVE DATA
 P.I. STA. - 44+11.59
 Δ - 14° 10' 57" (RT.)
 Dc - 3° 00' 00"
 R - 1,909.86'
 T - 237.59'
 L - 472.75'
 E - 14.72'
 e - 0.062

CURVE DATA
 P.I. STA. - 49+53.14
 Δ - 6° 58' 32" (RT.)
 Dc - 3° 00' 00"
 R - 1,909.86'
 T - 116.40'
 L - 232.52'
 E - 3.54'

LEGEND
 PAVEMENT REMOVED

