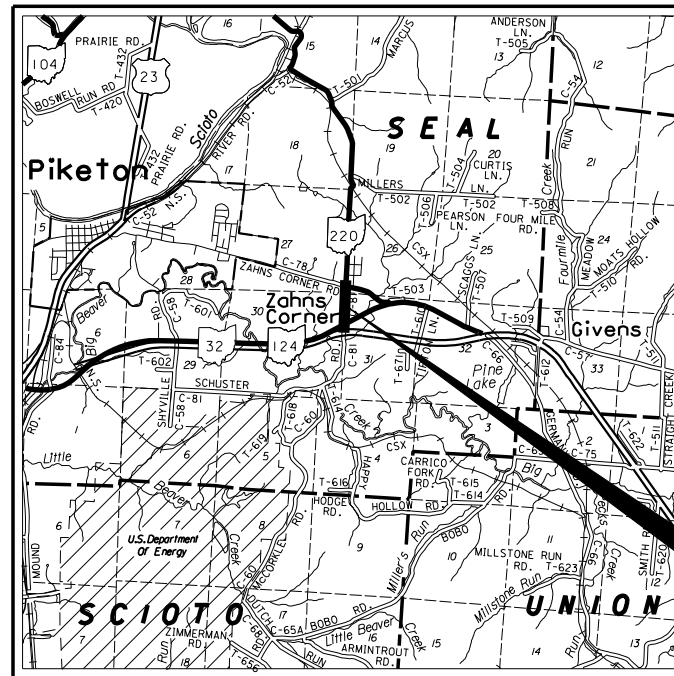


STATE OF OHIO
DEPARTMENT OF TRANSPORTATION

PIK-C.R. 81
SCHUSTER RD STUDY
SEAL TOWNSHIP
PIKE COUNTY



LOCATION MAP

LATITUDE: N39°03'30" LONGITUDE: W82°57'45"

SCALE IN MILES



PORTION TO BE IMPROVED	
INTERSTATE & DIVIDED HIGHWAY	
UNDIVIDED STATE & FEDERAL ROUTES	
OTHER ROADS	

DESIGN DESIGNATION

CURRENT ADT (2005)	4950
DESIGN YEAR ADT (2025)	6040
DESIGN HOURLY VOLUME (2025)	593
DIRECTIONAL DISTRIBUTION	55%
TRUCKS (24 HOUR B&C)	5%
DESIGN SPEED	60 MPH
LEGAL SPEED	55 MPH

DESIGN FUNCTIONAL CLASSIFICATION -
RURAL MAJOR COLLECTOR

DESIGN EXCEPTIONS

NONE

UNDERGROUND UTILITIES
TWO WORKING DAYS
BEFORE YOU DIG
CALL 1-800-362-2764 (TOLL FREE)
OHIO UTILITIES PROTECTION SERVICE
NON-MEMBERS
MUST BE CALLED DIRECTLY

PLAN PREPARED BY:



1201 Dublin Road • Columbus, Ohio 43215-1026
T: 614.221.0840 • F: 614.221.2484
E: inbox@wdpartners.com • wdpartners.com

INDEX OF SHEETS:

TITLE SHEET	1
TYPICAL SECTIONS	2-3, 3A
PLAN AND PROFILE - S.R. 220	4-6
CROSS SECTIONS - S.R. 220	7-18
SCHEMATIC PLAN - ALTERNATIVE A	19
PLAN AND PROFILE - ALTERNATIVE A	20-22
PLAN AND PROFILE - ALTERNATIVE B	23
SCHEMATIC PLAN - ALTERNATIVE C	24
PLAN AND PROFILE - ALTERNATIVE C	25-27

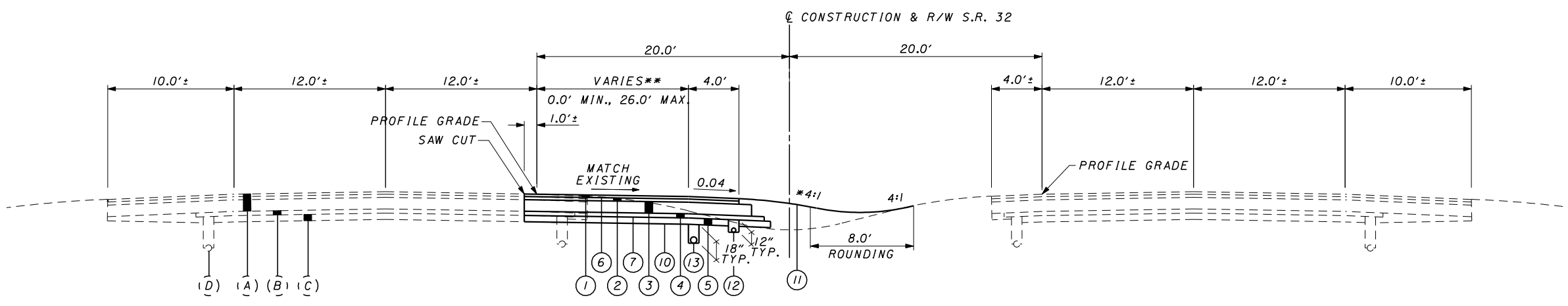
FEDERAL PROJECT NO.

PID NO.
79096

CONSTRUCTION PROJECT NO.

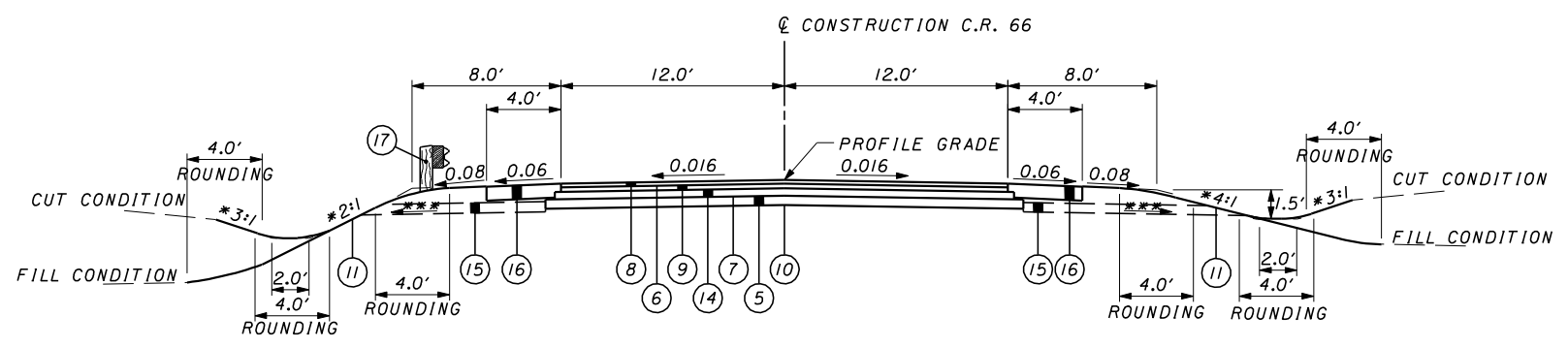
RAILROAD INVOLVEMENT
NONE

PIK-C.R. 81



NORMAL SECTION - S.R. 32 - ALTERNATIVE C

SECTION APPLIES:
STA. 1423+87.82 TO STA. 1430+70.00 = 682.18 FT.
TOTAL = 682.18 FT.



NORMAL SECTION - C.R. 66 - ALTERNATIVE C

SECTION APPLIES:
STA. 10+46.83 TO STA. 27+94.00 = 1747.17 FT.
TOTAL = 1747.17 FT.

LEGEND

- ① ITEM 446 1/4" ASPHALT CONCRETE SURFACE COURSE, TYPE 1, PG64-22
- ② ITEM 446 1 3/4" ASPHALT CONCRETE INTERMEDIATE COURSE, TYPE 2, PG64-22
- ③ ITEM 301 11" ASPHALT CONCRETE BASE, PG64-22
- ④ ITEM 308 4" ASPHALT TREATED FREE DRAINING BASE
- ⑤ ITEM 304 6" AGGREGATE BASE
- ⑥ ITEM 407 TACK COAT FOR INTERMEDIATE COURSE, 0.075 GAL./SQ. YD.
- ⑦ ITEM 408 PRIME COAT, 0.40 GAL./SQ. YD.
- ⑧ ITEM 448 1/4" ASPHALT CONCRETE SURFACE COURSE, TYPE 1, PG64-22
- ⑨ ITEM 448 1 3/4" ASPHALT CONCRETE INTERMEDIATE COURSE, TYPE 2, PG64-22
- ⑩ ITEM 204 SUBGRADE COMPACTION
- ⑪ ITEM 659 SEEDING AND MULCHING
- ⑫ ITEM 605 4" SHALLOW PIPE UNDERDRAINS WITH FABRIC WRAP, AS PER PLAN
- ⑬ ITEM 605 6" SHALLOW PIPE UNDERDRAINS
- ⑭ ITEM 301 5" ASPHALT CONCRETE BASE, PG64-22
- ⑮ ITEM 605 AGGREGATE DRAINS
- ⑯ ITEM 304 8" AGGREGATE BASE
- ⑰ ITEM 606 GUARDRAIL, TYPE 5

EXISTING LEGEND

- (A) EXISTING 14" ± ASPHALT PAVEMENT
- (B) EXISTING 4" ± FREE DRAINING BASE
- (C) EXISTING 6" ± SUBBASE
- (D) EXISTING 6" PIPE UNDERDRAIN

NOTE

EXISTING PAVEMENT EDGES SHALL BE SAW CUT TO LOCATE A SOUND PAVEMENT EDGE PER SEC. 203.04(E) OF THE 2005 CMS.

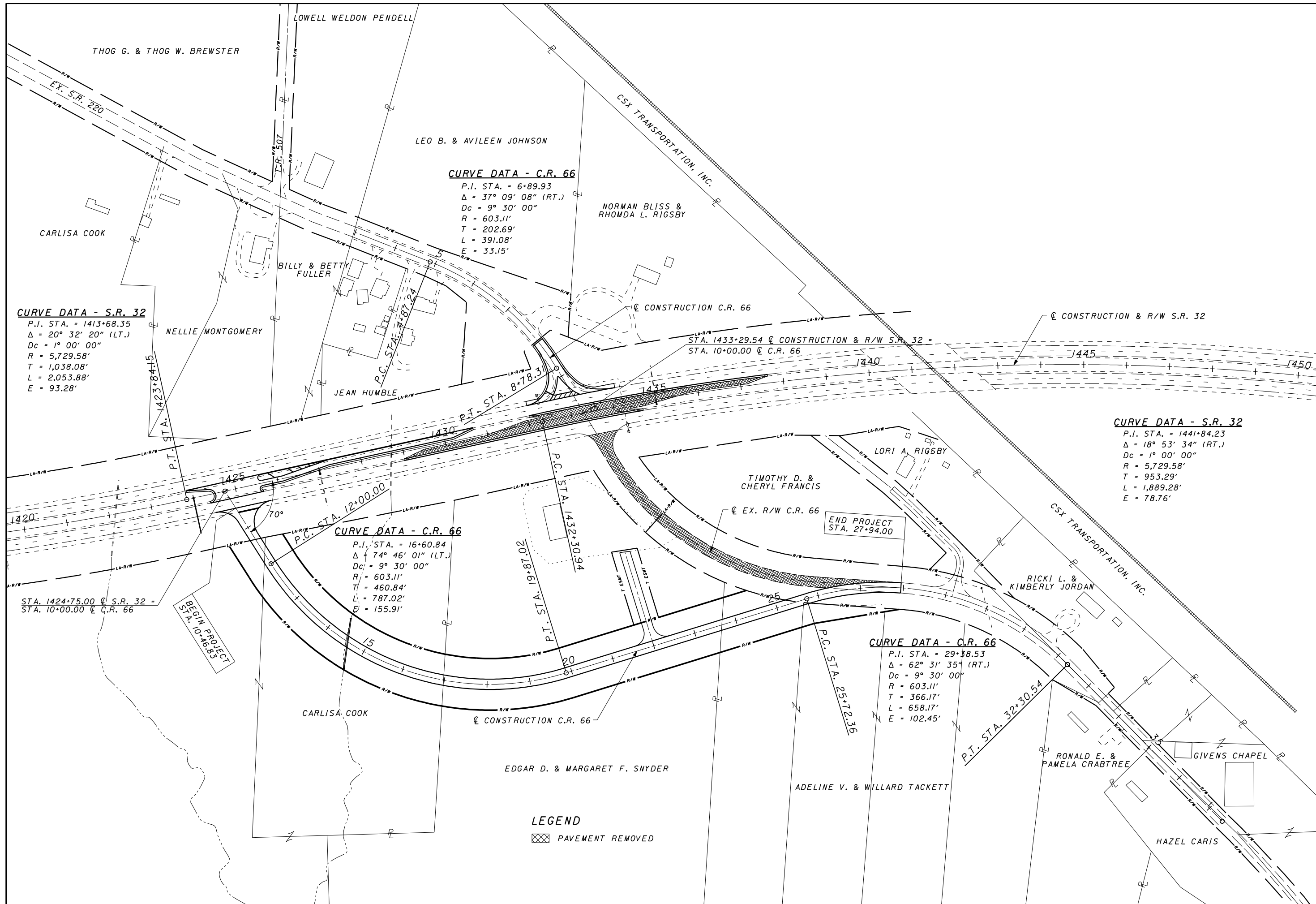
* ACTUAL SLOPES SHALL CONFORM TO PLAN CROSS SECTIONS.
** SEE PLAN SHEETS FOR LANE WIDTH TAPERS.
*** 0.04 MINIMUM 0.08 DESIRABLE



CALCULATED
TWG
CHECKED
FJR

**SCHEMATIC PLAN
ALTERNATIVE C**

PIK-C.R. 81



CURVE DATA - C.R. 66

P.I. STA. = 6+89.93
Δ = 37° 09' 08" (RT.)
Dc = 9° 30' 00"
R = 603.11'
T = 202.69'
L = 391.08'
E = 33.15'

CURVE DATA - S.R. 32

P.I. STA. = 1413+68.35
Δ = 20° 32' 20" (LT.)
Dc = 1° 00' 00"
R = 5,729.58'
T = 1,038.08'
L = 2,053.88'
E = 93.28'

CURVE DATA - S.R. 32

P.I. STA. = 1441+84.23
Δ = 18° 53' 34" (RT.)
Dc = 1° 00' 00"
R = 5,729.58'
T = 953.29'
L = 1,889.28'
E = 78.76'

CURVE DATA - C.R. 66

P.I. STA. = 16+60.84
Δ = 74° 46' 01" (LT.)
Dc = 9° 30' 00"
R = 603.11'
T = 460.84'
L = 787.02'
E = 155.91'

CURVE DATA - C.R. 66

P.I. STA. = 29+38.53
Δ = 62° 31' 35" (RT.)
Dc = 9° 30' 00"
R = 603.11'
T = 366.17'
L = 658.17'
E = 102.45'

LEGEND
[Hatched Box] PAVEMENT REMOVED



0 25 50 100
 HORIZONTAL SCALE IN FEET

CALCULATED TWG
 CHECKED FJR

PLAN S.R. 32 - ALTERNATIVE C
 STA. 1415+00 TO STA. 1442+00

PIK-C.R. 81

25
 27

CURVE DATA - S.R. 32

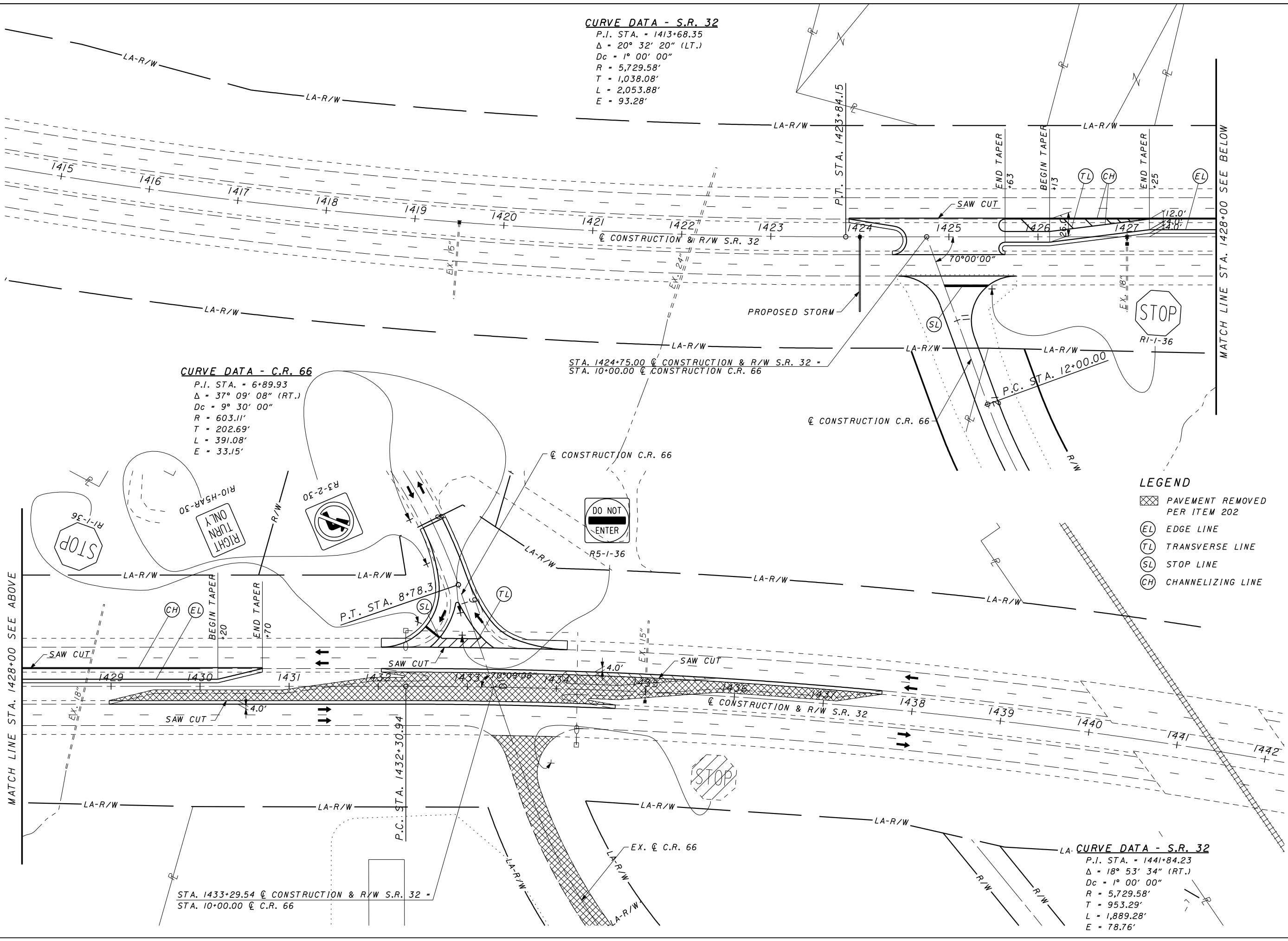
P.I. STA. = 1413+68.35
 $\Delta = 20^\circ 32' 20''$ (LT.)
 $D_c = 1^\circ 00' 00''$
 $R = 5,729.58'$
 $T = 1,038.08'$
 $L = 2,053.88'$
 $E = 93.28'$

CURVE DATA - C.R. 66

P.I. STA. = 6+89.93
 $\Delta = 37^\circ 09' 08''$ (RT.)
 $D_c = 9^\circ 30' 00''$
 $R = 603.11'$
 $T = 202.69'$
 $L = 391.08'$
 $E = 33.15'$

CURVE DATA - S.R. 32

P.I. STA. = 1441+84.23
 $\Delta = 18^\circ 53' 34''$ (RT.)
 $D_c = 1^\circ 00' 00''$
 $R = 5,729.58'$
 $T = 953.29'$
 $L = 1,889.28'$
 $E = 78.76'$

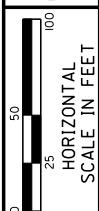


MATCH LINE STA. 1428+00 SEE ABOVE

MATCH LINE STA. 1428+00 SEE BELOW

STA. 1433+29.54 @ CONSTRUCTION & R/W S.R. 32 =
 STA. 10+00.00 @ C.R. 66

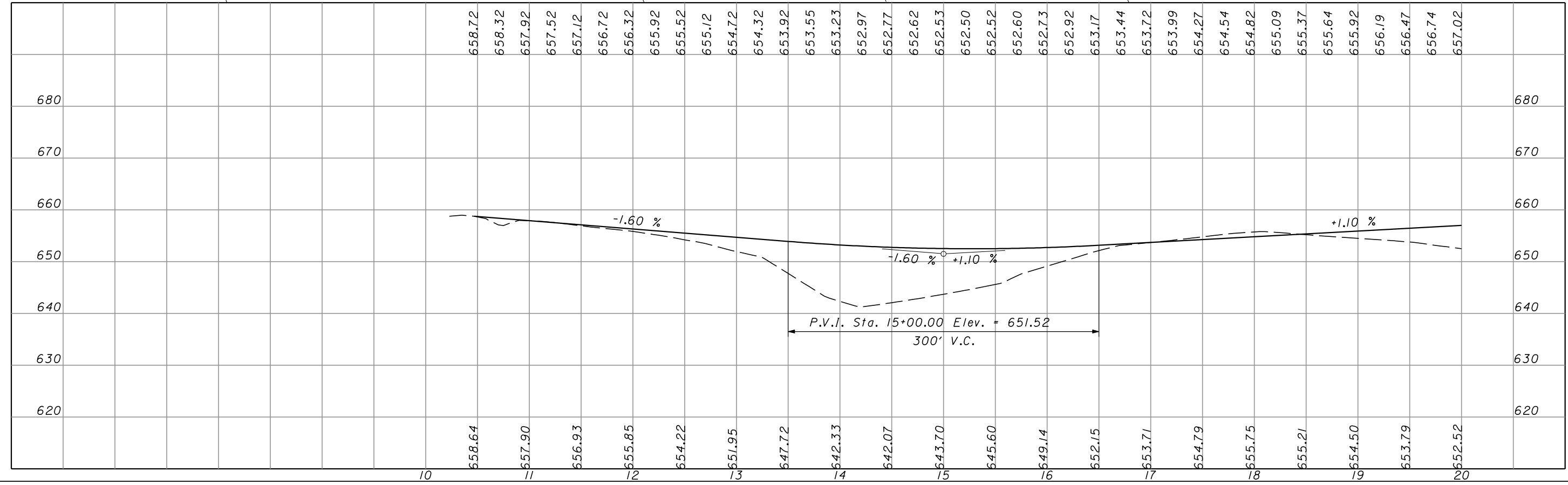
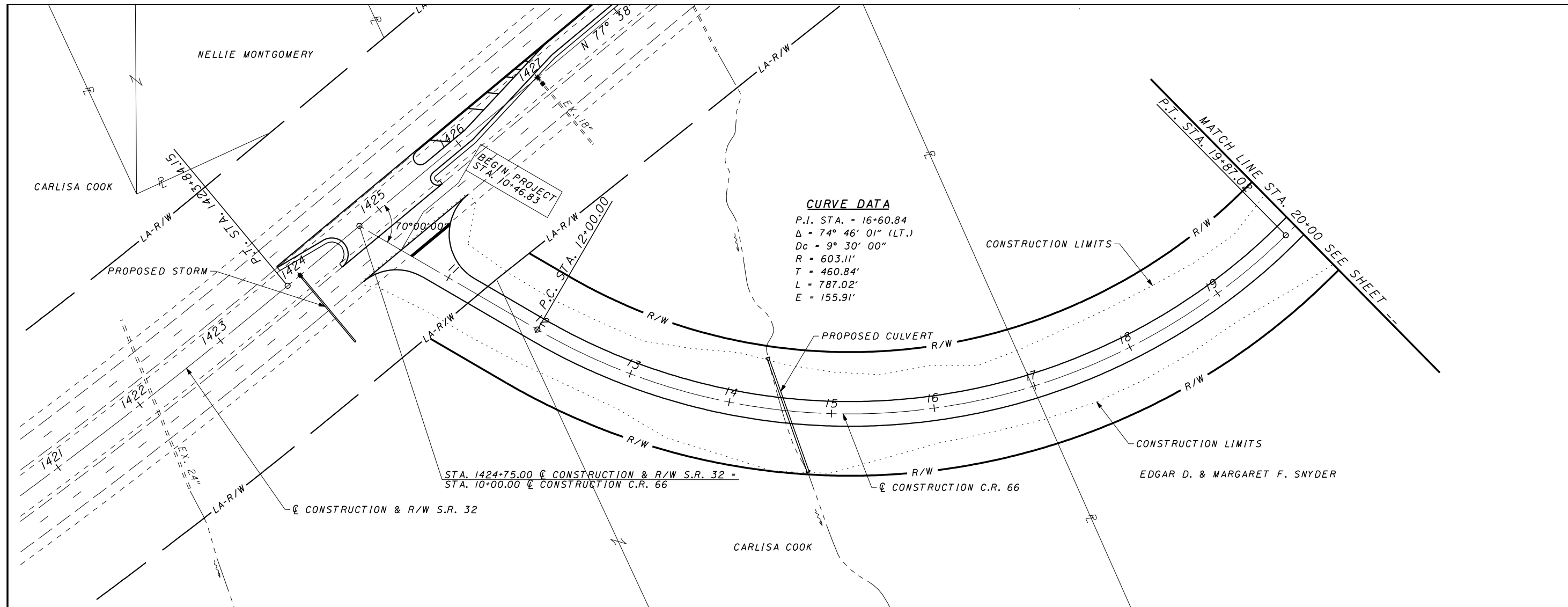
STA. 1424+75.00 @ CONSTRUCTION & R/W S.R. 32 =
 STA. 10+00.00 @ CONSTRUCTION C.R. 66

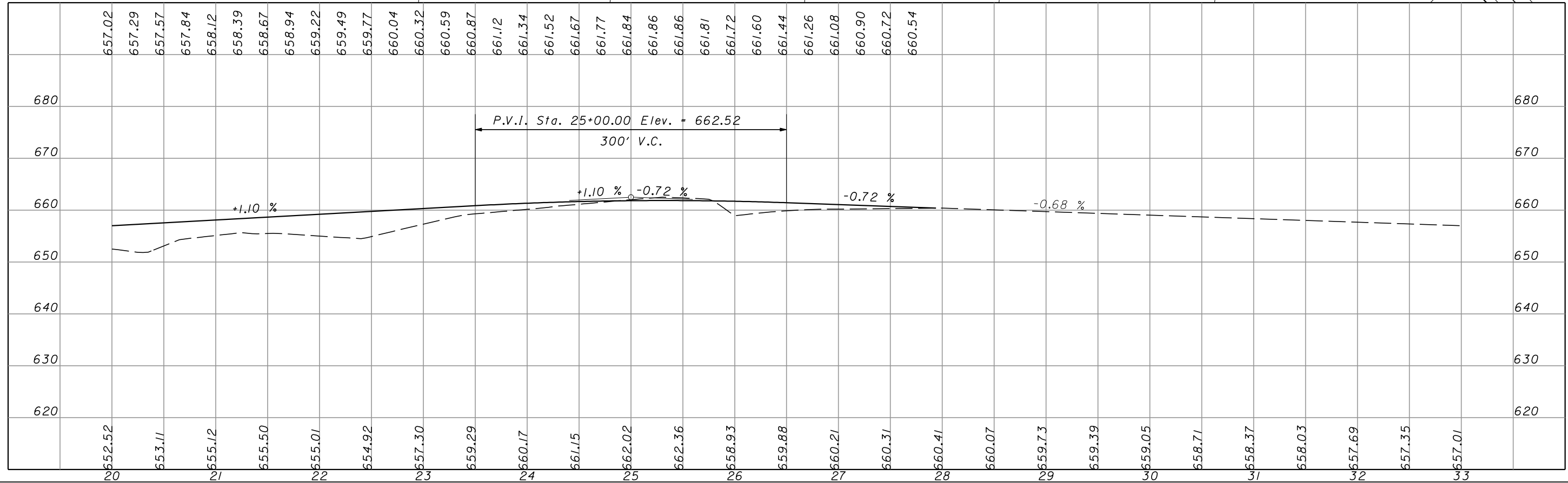
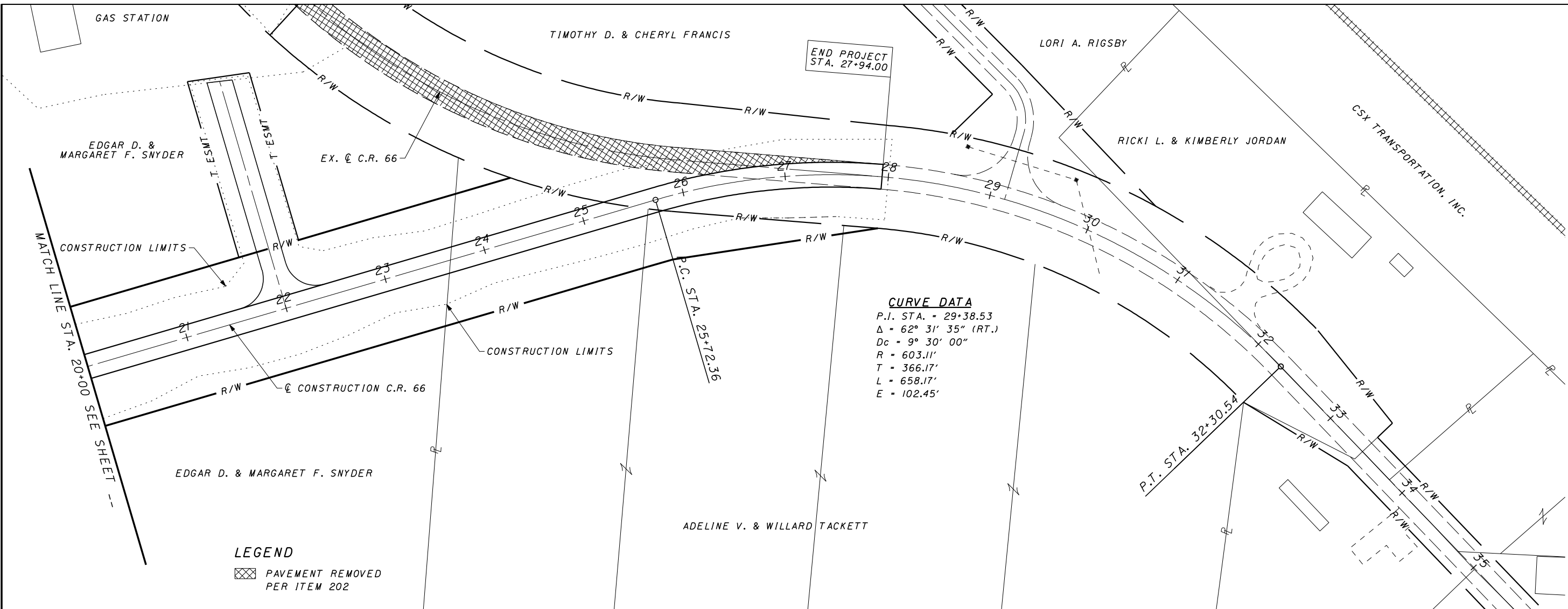


CALCULATED
TWG
CHECKED
FJR

PLAN AND PROFILE - ALTERNATIVE C
STA. 10+00 TO STA. 20+00

PIK-C.R.81





PLAN AND PROFILE - ALTERNATIVE C
STA. 20+00 TO STA. 35+00

PIK-C.R.81

(27 / 27)

CALCULATED: TWG
 CHECKED: FJR
 HORIZONTAL SCALE IN FEET: 1" = 25'
 SCALE IN FEET: 1" = 100'