

CALCULATED  
CER  
CHECKED

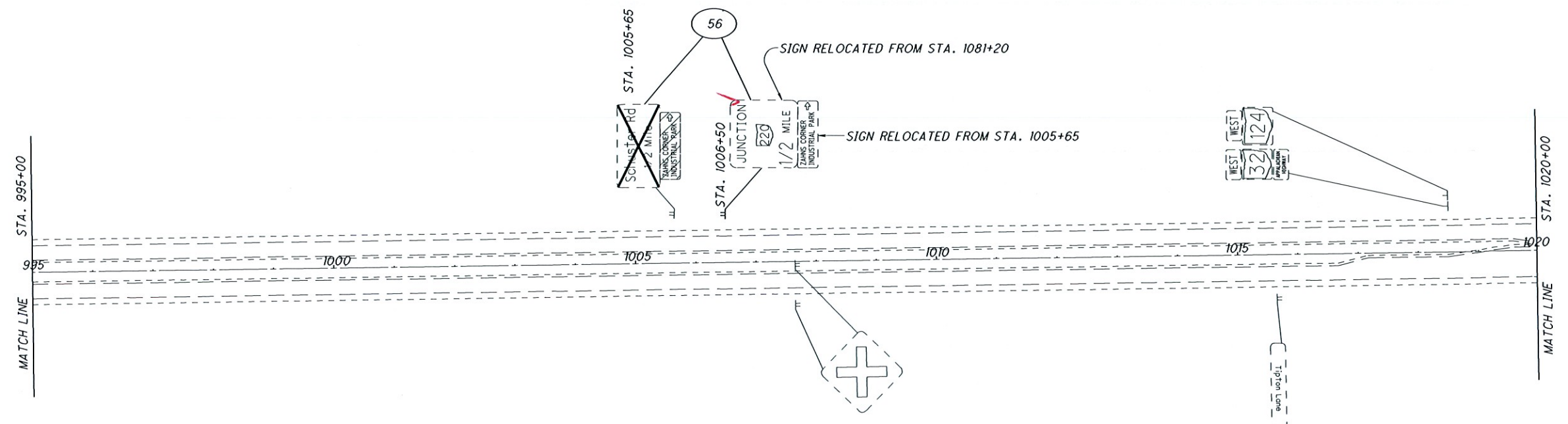
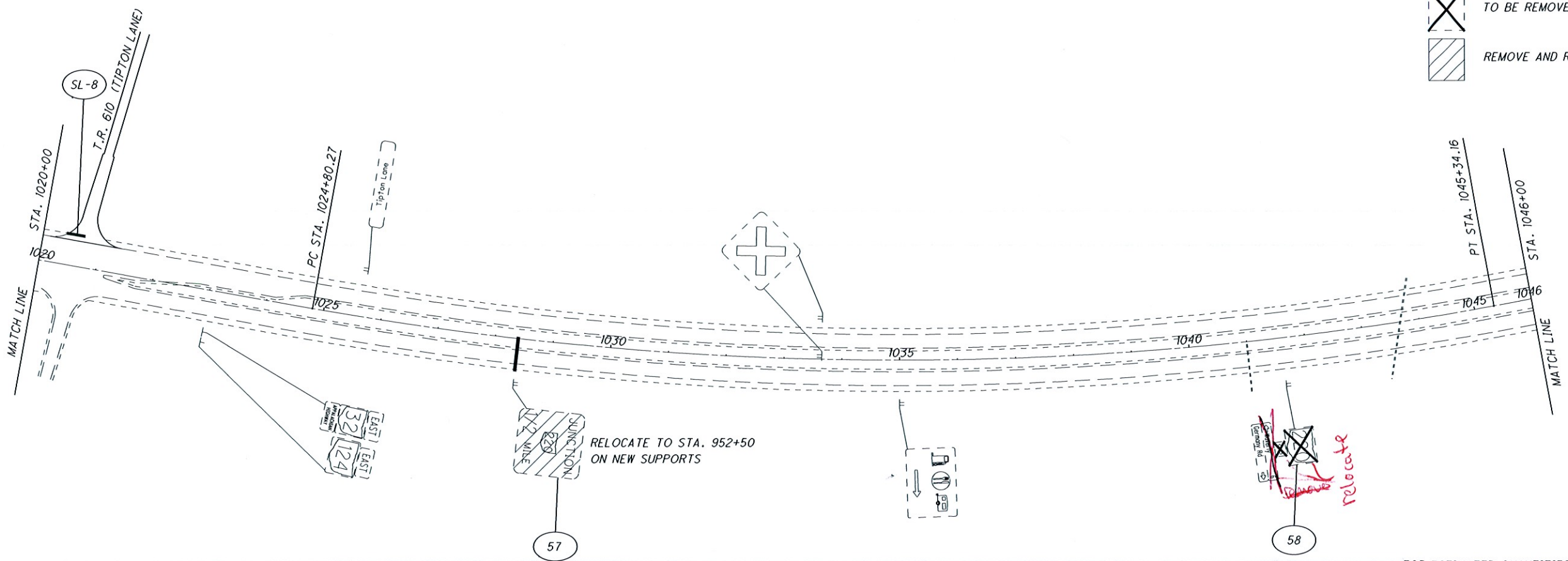
0 100 200  
HORIZONTAL  
SCALE IN FEET





TRAFFIC CONTROL STATE ROUTE 32  
STA. 943+00 TO STA. 995+00

PIK - 220 - 14.01



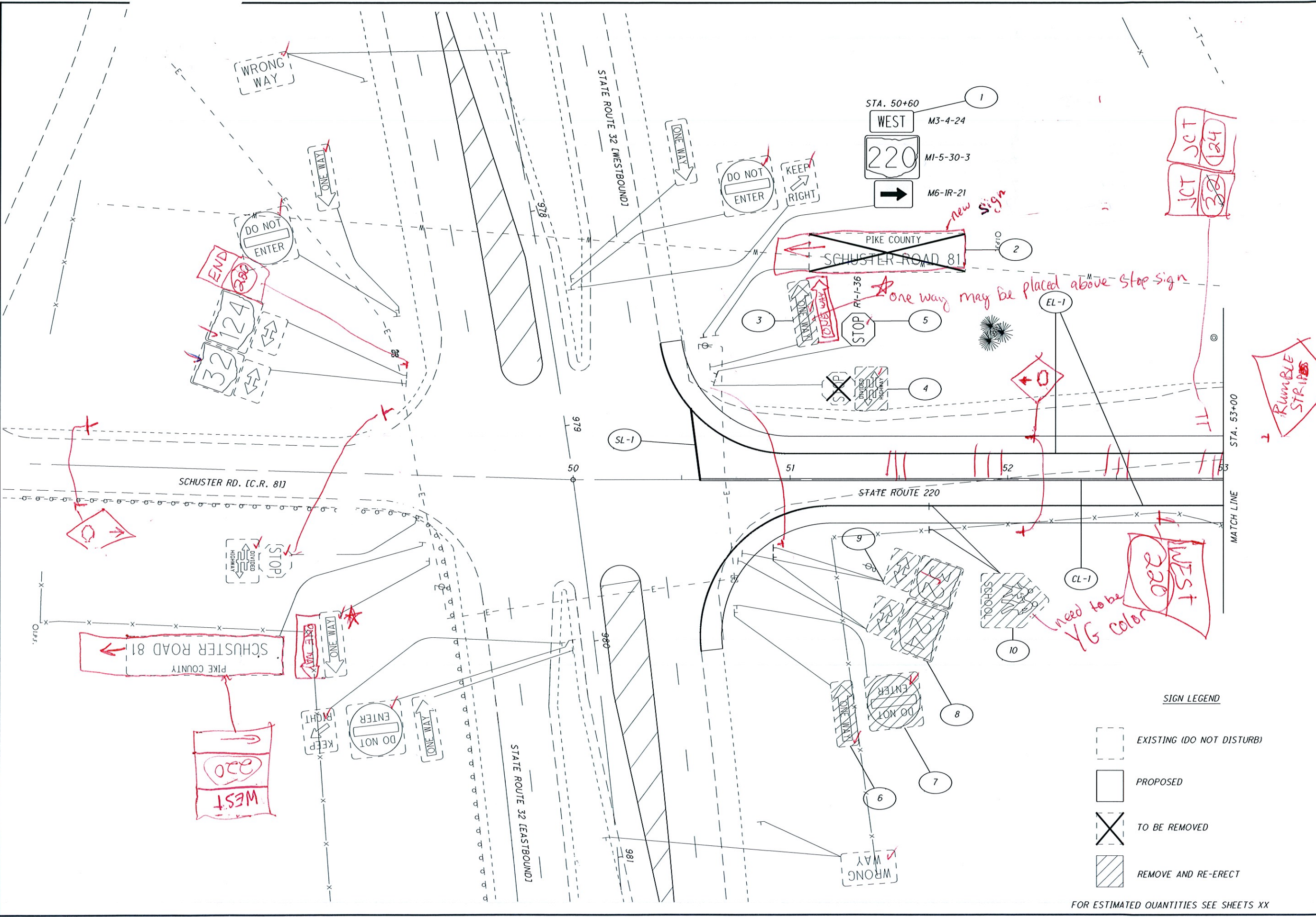
I:\project\Pike-32-20.00-81539\roadway\sheets\81539TP011.DGN 07-JAN-2011 3:07PM crice



- SIGN LEGEND**
-  EXISTING (DO NOT DISTURB)
  -  PROPOSED
  -  TO BE REMOVED
  -  REMOVE AND RE-ERECT

 0 100 200 HORIZONTAL SCALE IN FEET	CALCULATED CER CHECKED	<b>TRAFFIC CONTROL STATE ROUTE 32</b> <b>STA. 995+00 TO STA. 1046+00</b>
	<b>PIK-220-14.01</b>	FOR ESTIMATED QUANTITIES SEE SHEETS XX

I:\project\Pike\Pik-32-20.00-81539\roadway\sheets\81539TP001.dgn 07-JAN-2011 3:03PM crice



**SIGN LEGEND**

- EXISTING (DO NOT DISTURB)
- PROPOSED
- X TO BE REMOVED
- REMOVE AND RE-ERECT

FOR ESTIMATED QUANTITIES SEE SHEETS XX

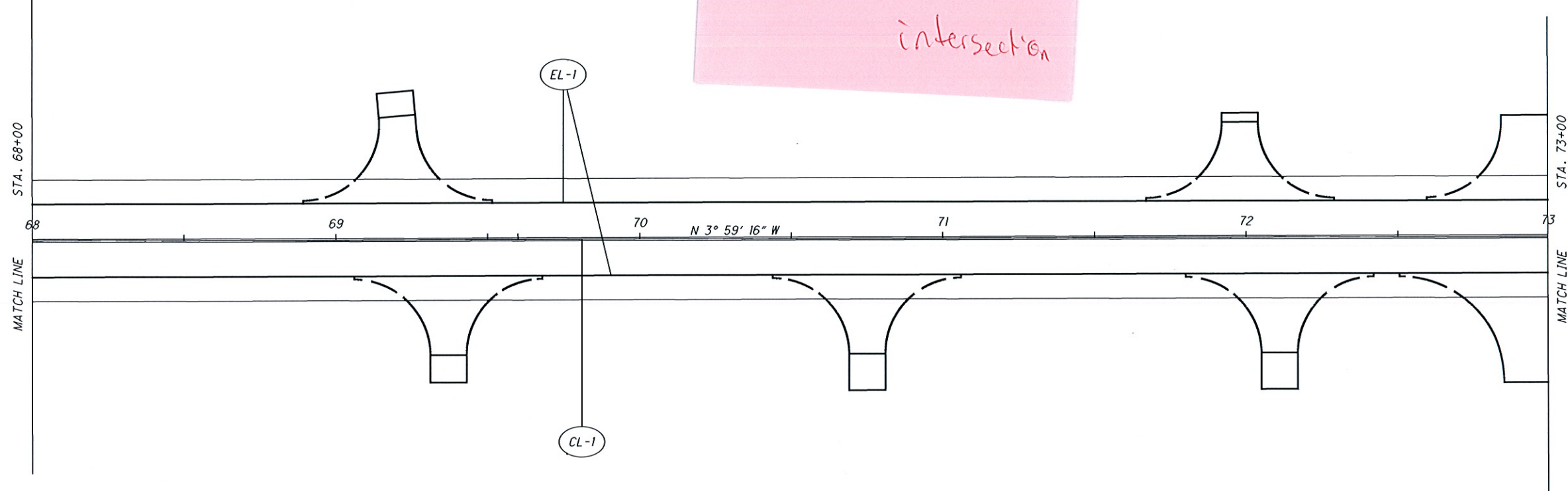
PIK-220-14.01

CALCULATED 0  
CER  
CHECKED

**TRAFFIC CONTROL S.R. 220**  
**STA. 50+00 TO STA. 53+00**





12

I:\project\Pike\Pik-32-20.00-81539\roadway\sheets\81539TP004.dgn 07-JAN-2011 3:09PM crice



School Zone  
+  
Beaver Creek Rd.  
intersection

SIGN LEGEND

-  EXISTING (DO NOT DISTURB)
-  PROPOSED
-  TO BE REMOVED
-  REMOVE AND RE-ERECT

FOR ESTIMATED QUANTITIES SEE SHEETS XX

CALCULATED  
CER  
CHECKED

0 20 40  
HORIZONTAL  
SCALE IN FEET



TRAFFIC CONTROL S.R. 220  
STA. 68+00 TO STA. 73+00

PIK-220-14.01

4

RS-1 THROUGH RS-7 ARE TO BE PLACED IN THE EXISTING PAVEMENT.  
 FOR RUMBLE STRIP DETAILS NOT SHOWN SEE SHEET XX  
 FOR ESTIMATED QUANTITIES SEE SHEET XXXXX

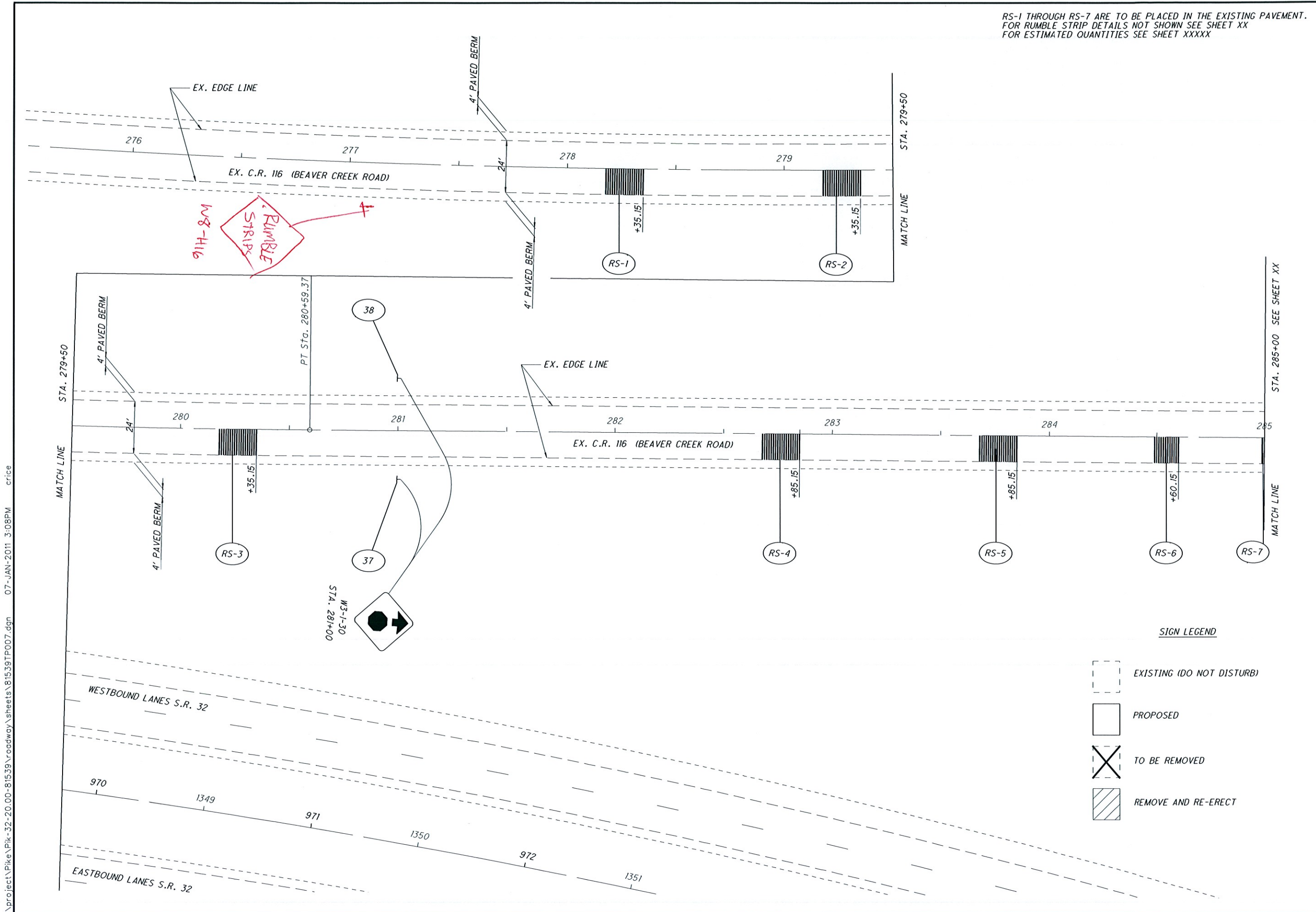


CALCULATED  
 CER  
 CHECKED

**TRAFFIC CONTROL C.R. 116**  
**STA. 276+00 TO STA. 285+00**

**PIK-220-14.01**

7



*Handwritten:* RUMBLE STRIPS W3-1-116

*Handwritten:* W3-1-30 STA. 281+00

I:\project\Pike\32-20.00-81539\roadway\sheets\81539TP007.dgn 07-JAN-2011 3:08PM crice

I:\project\Pike\Pik-32-20.00-81539\roadway\sheets\81539TP007.dgn 07-JAN-2011 3:08PM crice

STA. 285+00 SEE SHEET XX

MATCH LINE

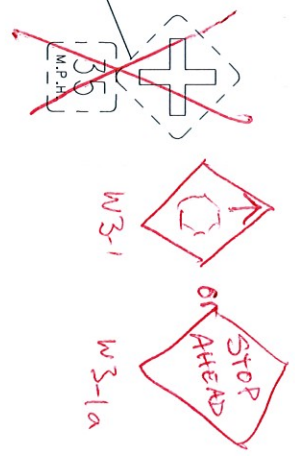
285

EX. EDGE LINE  
EQUATION:  $POT Sta. 285+55.51 =$   
 $POT Sta. 4+90.36$

+10.15

6 (150')

RS-7



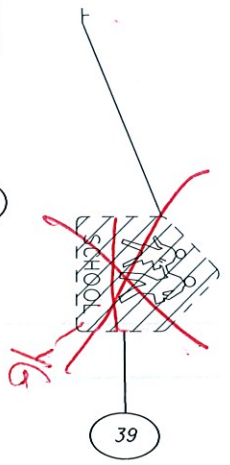
BEGIN PROP. PAVEMENT  
STA. 5+44.18

CL-2

EL-2

+95

RS-8



PROP. C.R. 116

7

RS-9

SIGN LEGEND

- EXISTING (DO NOT DISTURB)
- PROPOSED
- TO BE REMOVED
- REMOVE AND RE-ERECT

PC Sta. 7+11.43

RS-10

+20

8

PT Sta. 8+68.93

15



STA. 10+00

MATCH LINE

RUMBLE STRIP PADS RS-1 THROUGH RS-7 ARE TO BE PLACED IN THE EXISTING PAVEMENT.  
FOR RUMBLE STRIP DETAILS NOT SHOWN SEE SHEET XX  
FOR ESTIMATED QUANTITIES SEE SHEET XXXXX

CALCULATED  
CER  
CHECKED

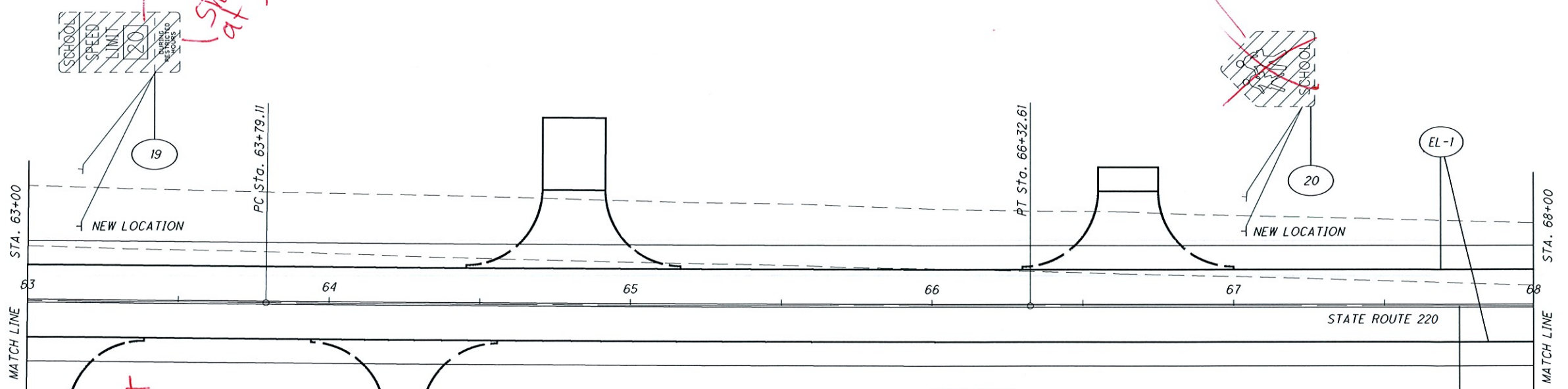
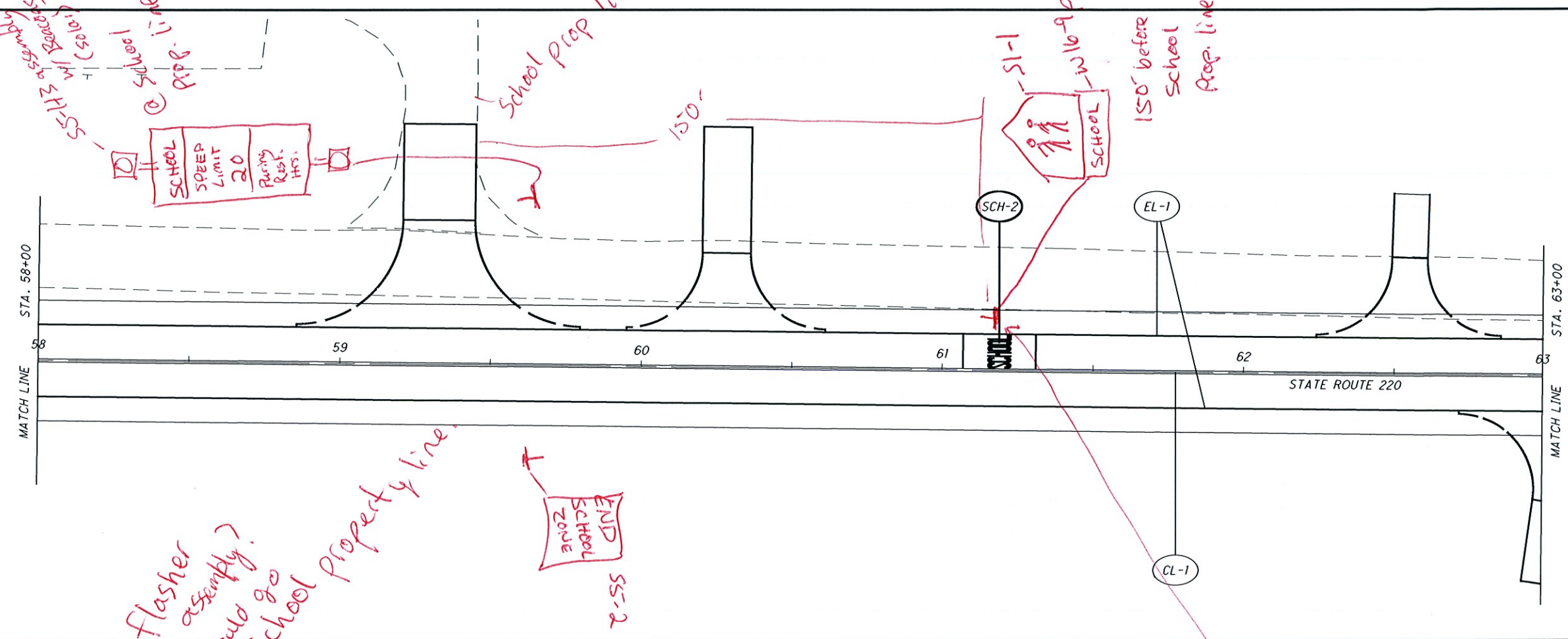
HORIZONTAL SCALE IN FEET

TRAFFIC CONTROL C.R. 116  
STA. 285+00 TO STA. 10+00

PIK-220-14.01



I:\project\Pike-32-20.00-81539\roadway\sheets\81539TP003.dgn 07-JAN-2011 3:09PM crice



**SIGN LEGEND**

	EXISTING (DO NOT DISTURB)
	PROPOSED
	TO BE REMOVED
	REMOVE AND RE-ERECT

FOR ESTIMATED QUANTITIES SEE SHEETS XX

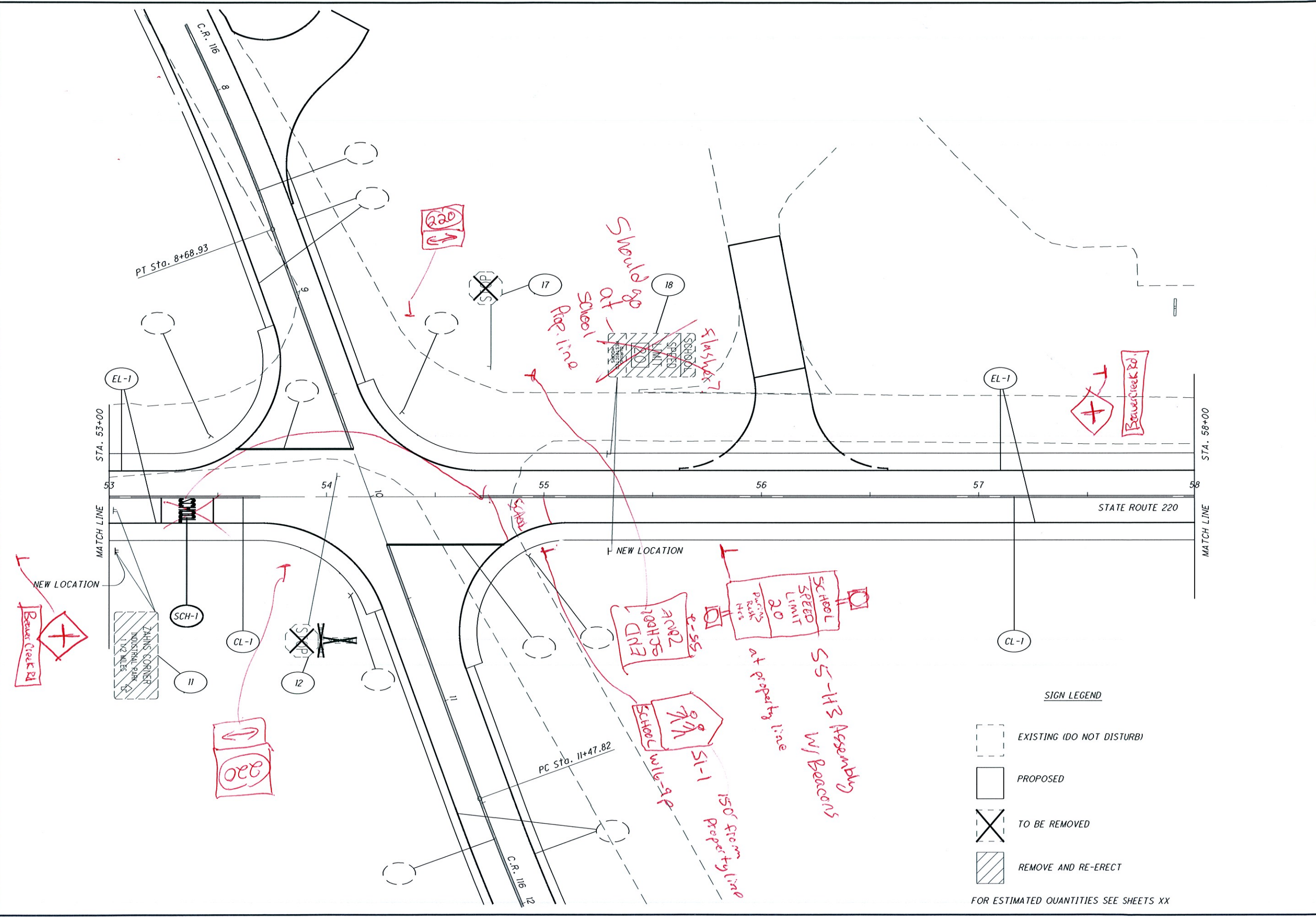
CALCULATED  
CER  
CHECKED

HORIZONTAL SCALE IN FEET





**TRAFFIC CONTROL S.R. 220  
STA. 58+00 TO STA. 68+00**

**PIK-220-14.01**

I:\project\Pike\Pik-32-20.00-81539\roadway\sheets\81539TP002.dgn 07-JAN-2011 3:10PM crice



SIGN LEGEND

-  EXISTING (DO NOT DISTURB)
-  PROPOSED
-  TO BE REMOVED
-  REMOVE AND RE-ERECT

FOR ESTIMATED QUANTITIES SEE SHEETS XX

CALCULATED  
CER  
CHECKED

0 20 40  
HORIZONTAL  
SCALE IN FEET



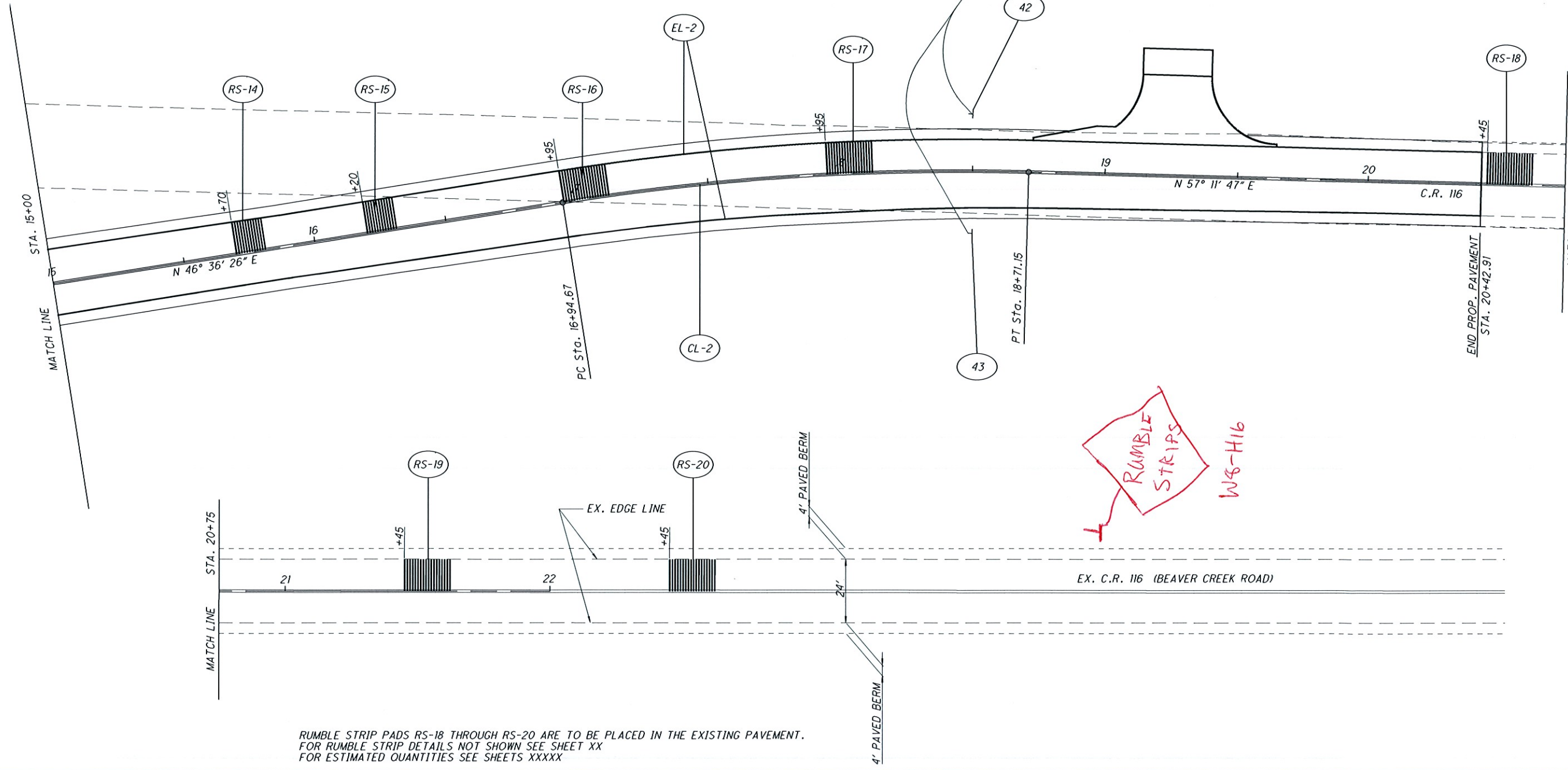
**TRAFFIC CONTROL S.R. 220  
STA. 53+00 TO STA. 58+00**

**PIK-220-14.01**





I:\project\Pike\PIK-20-00-81539\roadway\sheets\81539TP009.dgn 07-JAN-2011 3:07PM crice



**SIGN LEGEND**

	EXISTING (DO NOT DISTURB)
	PROPOSED
	TO BE REMOVED
	REMOVE AND RE-ERECT

PIK-220-14.01

TRAFFIC CONTROL C.R. 116  
STA. 15+00 TO STA. 22+45

CALCULATED  
CER  
CHECKED

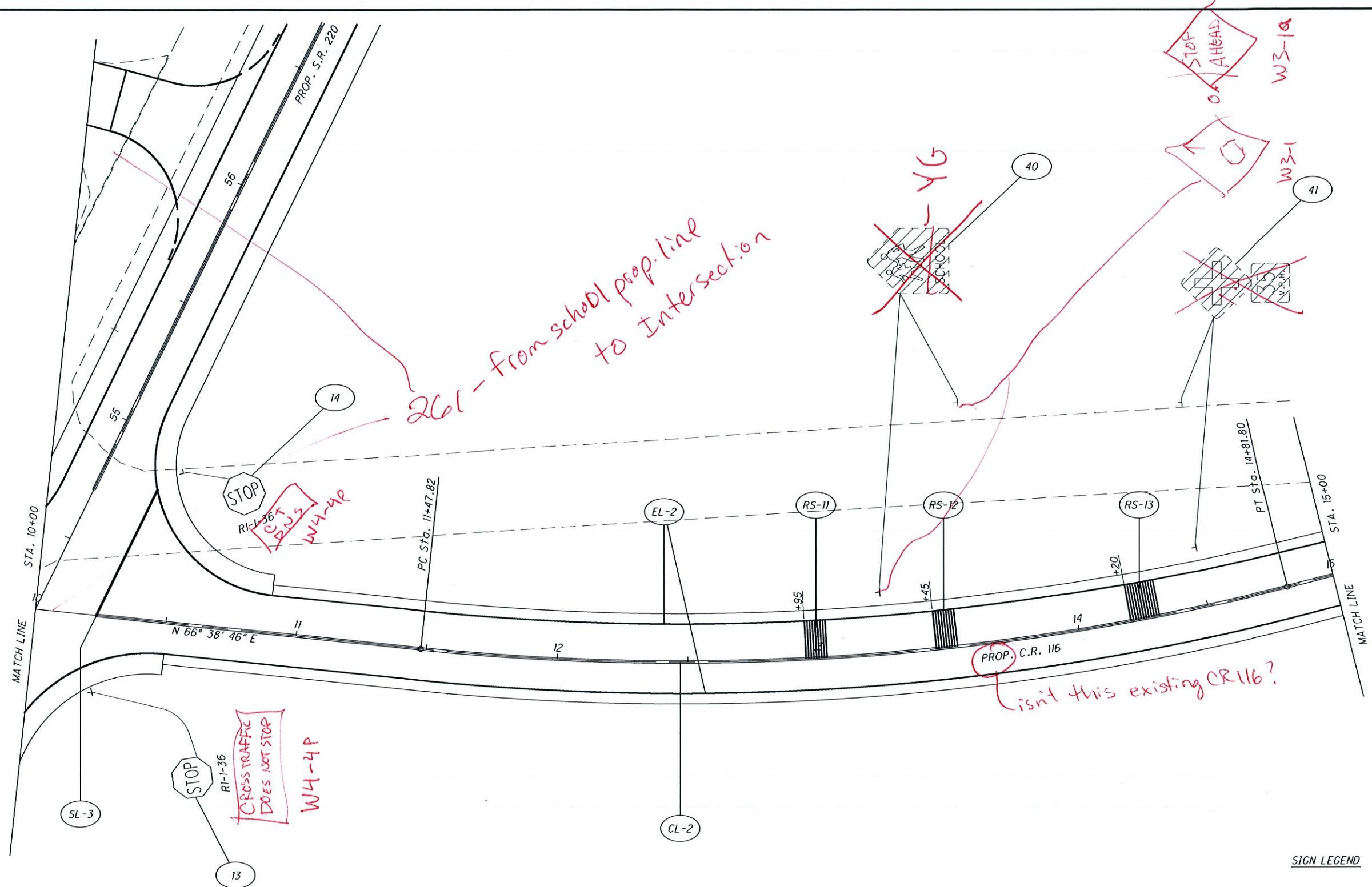
HORIZONTAL SCALE IN FEET  
0 20 40

STA. 15+00 STA. 20+75

EX. C.R. 116 (BEAVER CREEK ROAD)

RUMBLE STRIP PADS RS-18 THROUGH RS-20 ARE TO BE PLACED IN THE EXISTING PAVEMENT.  
FOR RUMBLE STRIP DETAILS NOT SHOWN SEE SHEET XX  
FOR ESTIMATED QUANTITIES SEE SHEETS XXXX

I:\project\Pike-32-20.00-81539\roadway\sheets\81539TP008.dgn 07-JAN-2011 3:08PM crice



261 - from school prop. line to intersection

isnt this existing CR 116?





STOP RI-1-36  
CROSS TRAFFIC DOES NOT STOP  
W4-4P

STOP RI-1-36  
CROSS TRAFFIC DOES NOT STOP  
W4-4P

STOP AHEAD W3-1A

STOP AHEAD W3-1

**SIGN LEGEND**

	EXISTING (DO NOT DISTURB)
	PROPOSED
	TO BE REMOVED
	REMOVE AND RE-ERECT

FOR RUMBLE STRIP DETAILS NOT SHOWN SEE SHEET XX  
FOR ESTIMATED QUANTITIES SEE SHEETS XXXXX

PIK-220-14.01

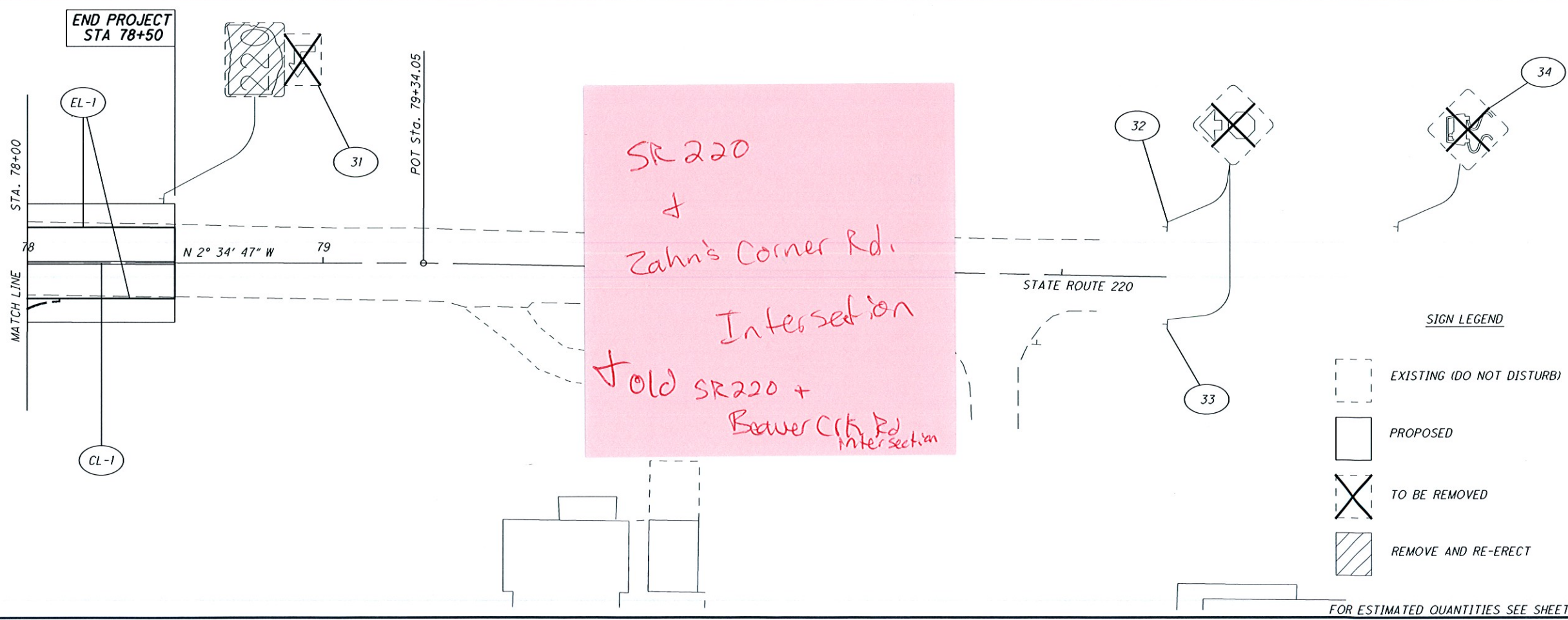
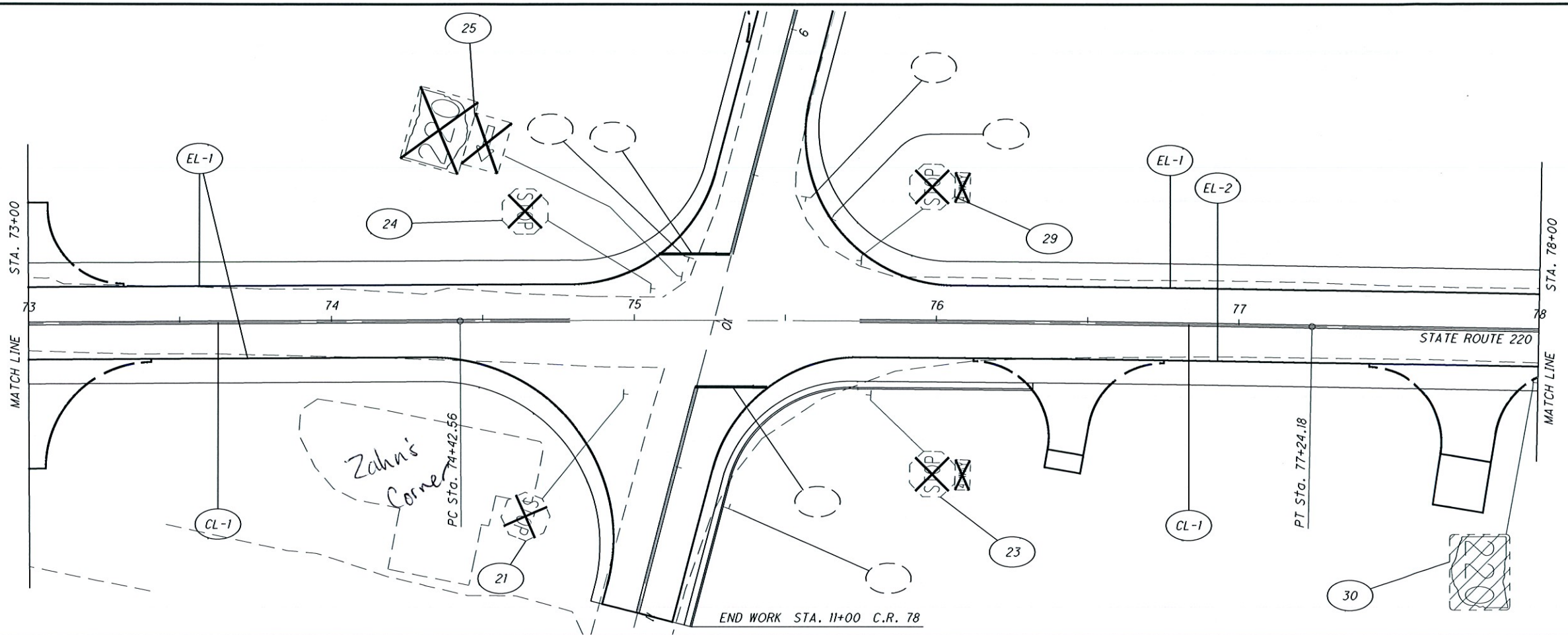
TRAFFIC CONTROL C.R. 116  
STA. 10+00 TO STA. 15+00

CALCULATED 0  
CER 40  
CHECKED

HORIZONTAL SCALE IN FEET

6

I:\project\Pike\Pik-20-00-81539\roadway\sheets\81539TPO05.dgn 07-JAN-2011 3:09PM crice



  
 CALCULATED 0  
 CER 20  
 CHECKED 40  
 HORIZONTAL SCALE IN FEET

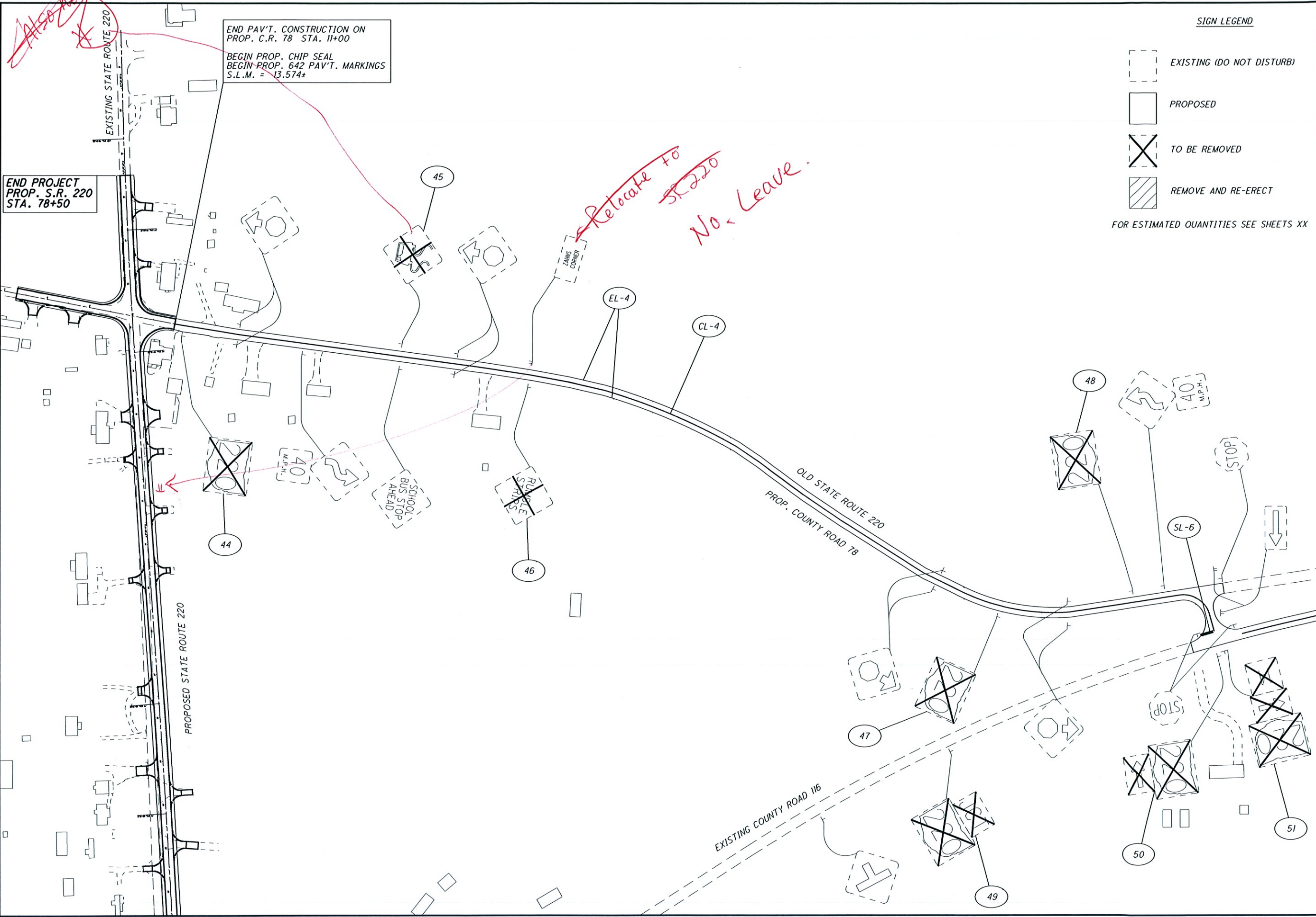
**TRAFFIC CONTROL S.R. 220**  
**STA. 73+00 TO STA 81+50**

**PIK-220-14.01**



FOR ESTIMATED QUANTITIES SEE SHEETS XX

I:\project\Pike\32-20.00-81539\roadway\_sheets\81539TP014.DGN 07-JAN-2011 3:06PM crice







END PROJECT  
PROP. S.R. 220  
STA. 78+50

END PAV'T. CONSTRUCTION ON  
PROP. C.R. 78 STA. 11+00  
BEGIN PROP. CHIP SEAL  
BEGIN PROP. 642 PAV'T. MARKINGS  
S.L.M. = 13.574±

*Relocate to  
SR 220  
No. Leave.*

SIGN LEGEND

-  EXISTING (DO NOT DISTURB)
-  PROPOSED
-  TO BE REMOVED
-  REMOVE AND RE-ERECT

FOR ESTIMATED QUANTITIES SEE SHEETS XX

TRAFFIC CONTROL  
OLD STATE ROUTE 220

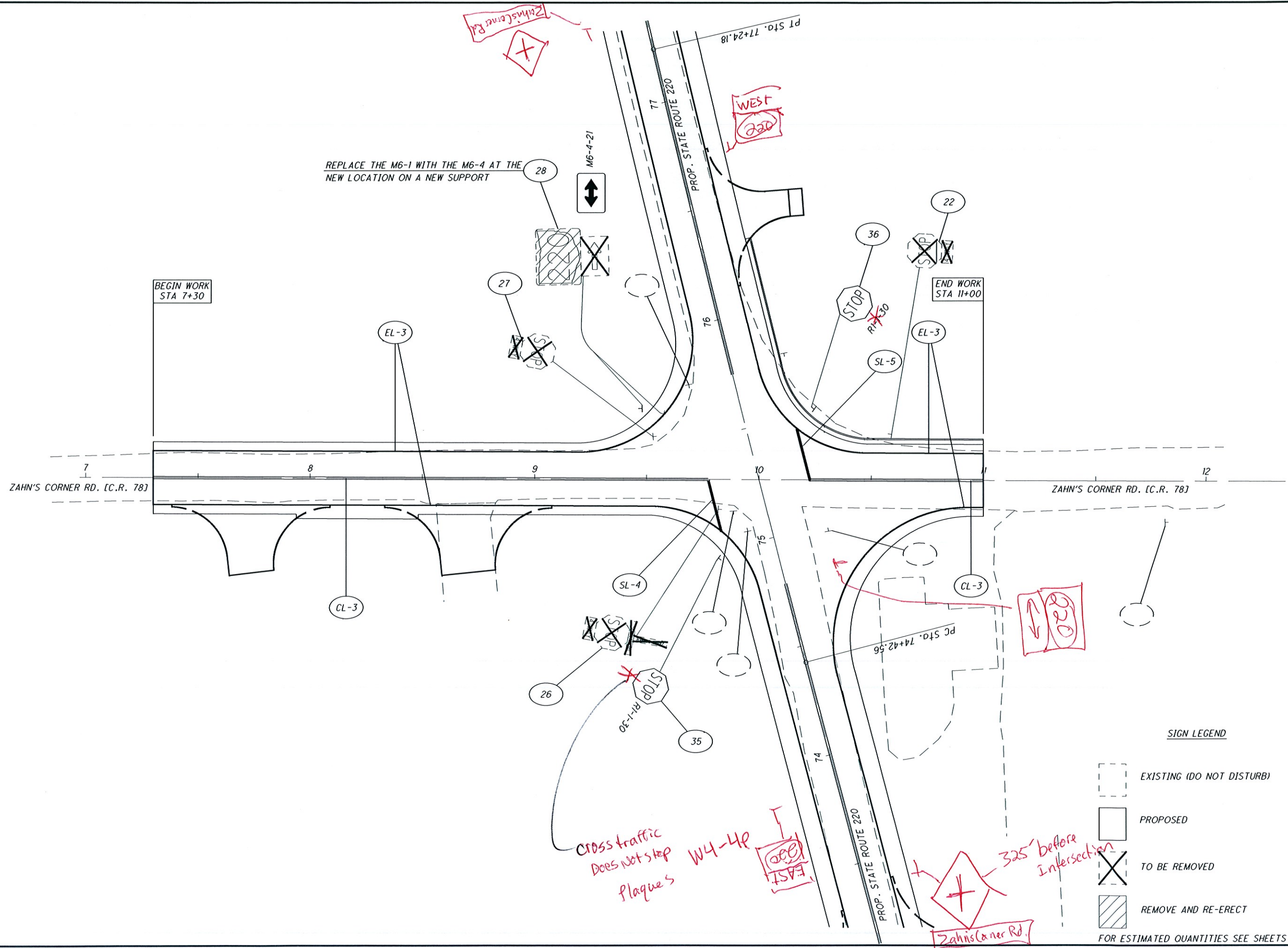
PIK-220-14.01

13

CALCULATED BY  
CER  
CHECKED

0 100 200  
HORIZONTAL  
SCALE IN FEET

I:\project\Pike\PIK-20-00-81539\roadway\sheets\81539TPO06.dgn 07-JAN-2011 3:08PM crice



**SIGN LEGEND**

- EXISTING (DO NOT DISTURB)
- PROPOSED
- X TO BE REMOVED
- REMOVE AND RE-ERECT

FOR ESTIMATED QUANTITIES SEE SHEETS XX

PIK -220-14.01

12

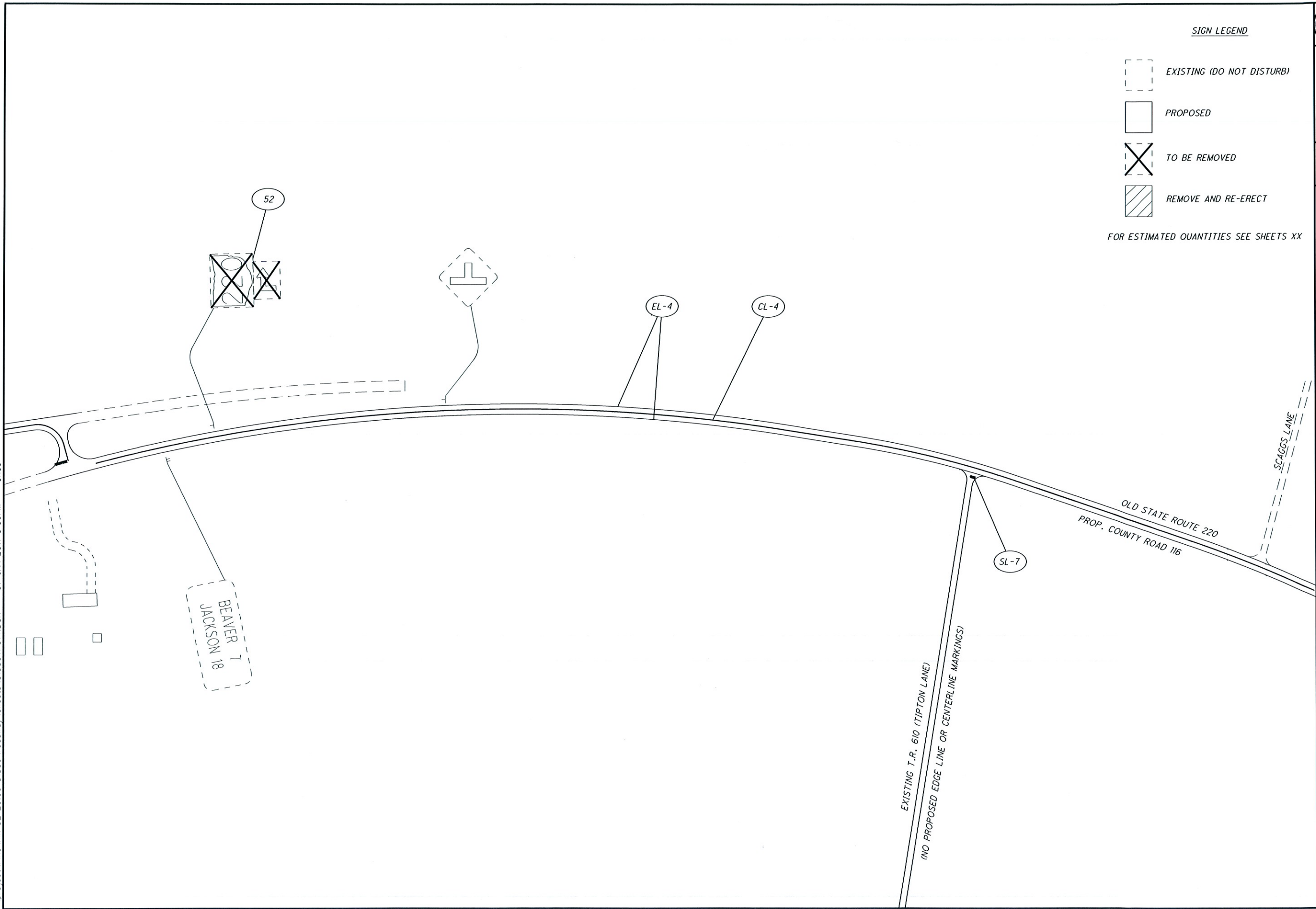
**TRAFFIC CONTROL C.R. 78**

**STA. 7+00 TO STA. 12+00**





CALCULATED  
CER  
CHECKED

0 20 40  
HORIZONTAL  
SCALE IN FEET

I:\project\Pike\PIK-20-00-81539\roadway\sheets\81539TP014.DGN 07-JAN-2011 3:06PM crice



SIGN LEGEND

-  EXISTING (DO NOT DISTURB)
-  PROPOSED
-  TO BE REMOVED
-  REMOVE AND RE-ERECT

FOR ESTIMATED QUANTITIES SEE SHEETS XX

CALCULATED CER	CHECKED		

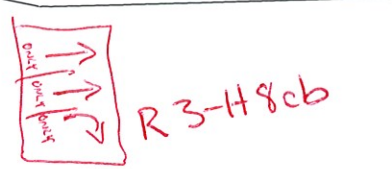
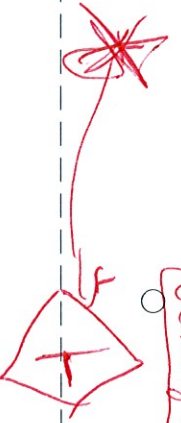
**TRAFFIC CONTROL  
OLD STATE ROUTE 220**

**PIK-220-14.01**



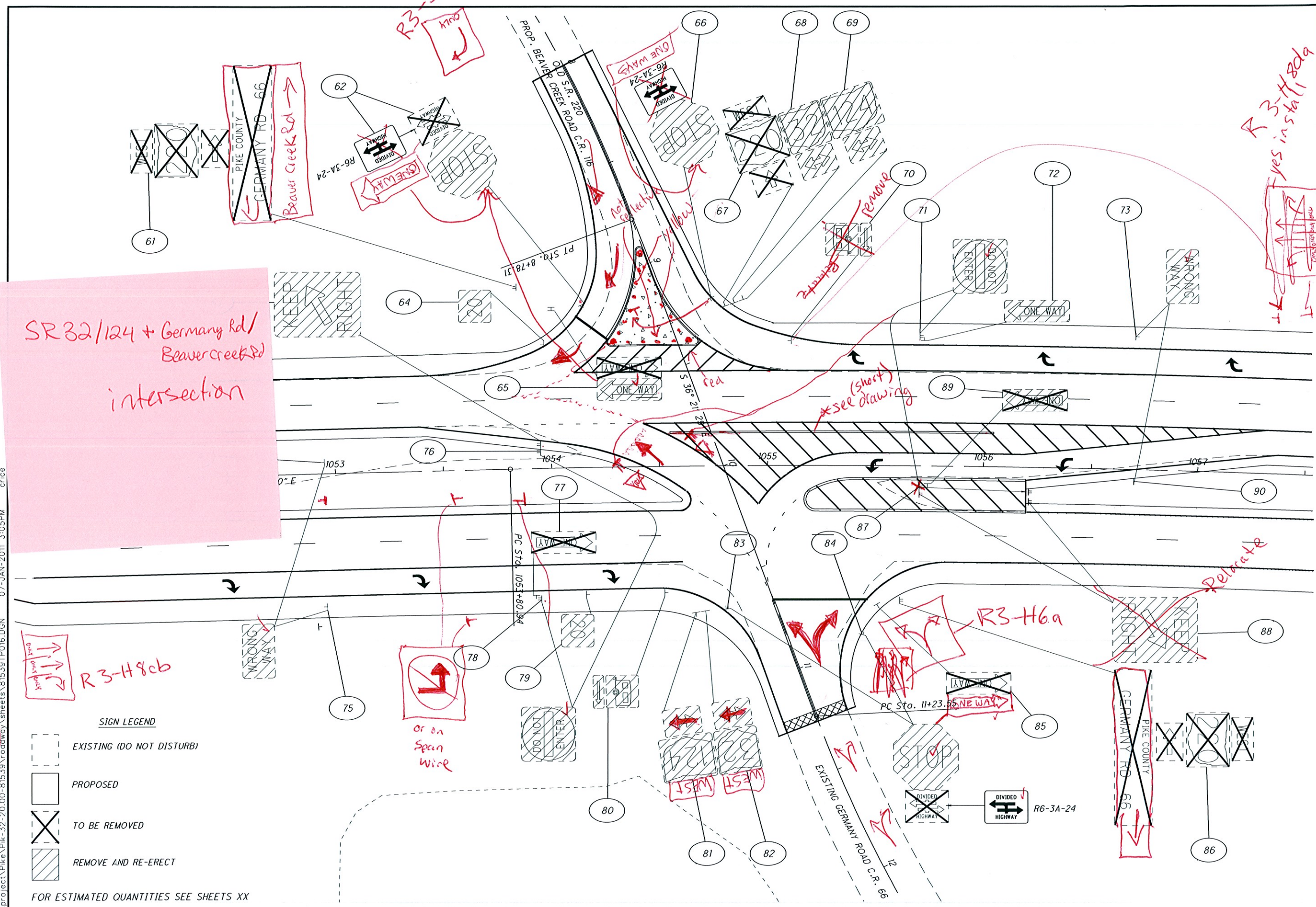
I:\project\Pike-32-20.00-81539\roadway\sheet\81539TP016.DGN 07-JAN-2011 3:05PM crice

SR 32/124 + Germany Rd/  
Beaver Creek Rd  
intersection



- SIGN LEGEND**
- EXISTING (DO NOT DISTURB)
  - PROPOSED
  - TO BE REMOVED
  - REMOVE AND RE-ERECT

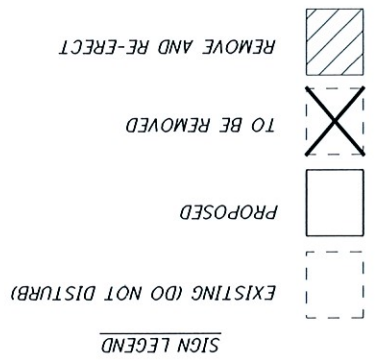
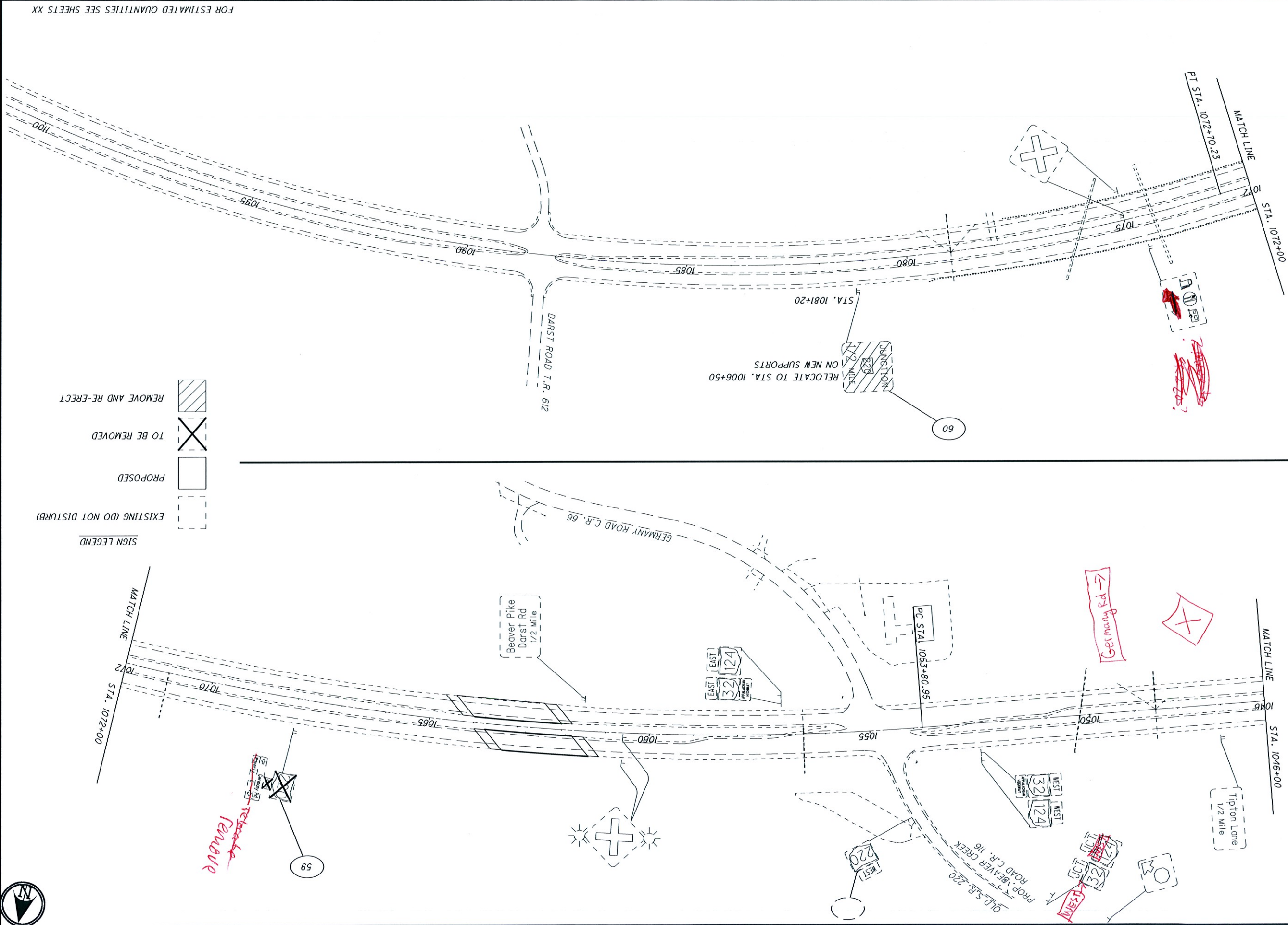
FOR ESTIMATED QUANTITIES SEE SHEETS XX



**TRAFFIC CONTROL**  
**GERMANY ROAD INTERSECTION**

CALCULATED CER	CHECKED
0 10 20 30 40	HORIZONTAL SCALE IN FEET
PIK-220-14.01	





FOR ESTIMATED QUANTITIES SEE SHEETS XX

91

PIK-220-14.01

TRAFFIC CONTROL STATE ROUTE 32  
STA. 1046+00 TO STA. 1100+00

CALCULATED 0  
CER  
CHECKED  
50  
HORIZONTAL  
SCALE IN FEET  
200



59  
*Relocate  
Remove*

*Germany Rd →*

RELOCATE TO STA. 1006+50  
ON NEW SUPPORTS

Beaver Pike  
Darst Rd  
1/2 Mile

Tip-ton Lane  
1/2 Mile

OLD S.R. 220  
PROP. BEAVER CREEK  
ROAD C.R. 16

PC STA 1053+80.95

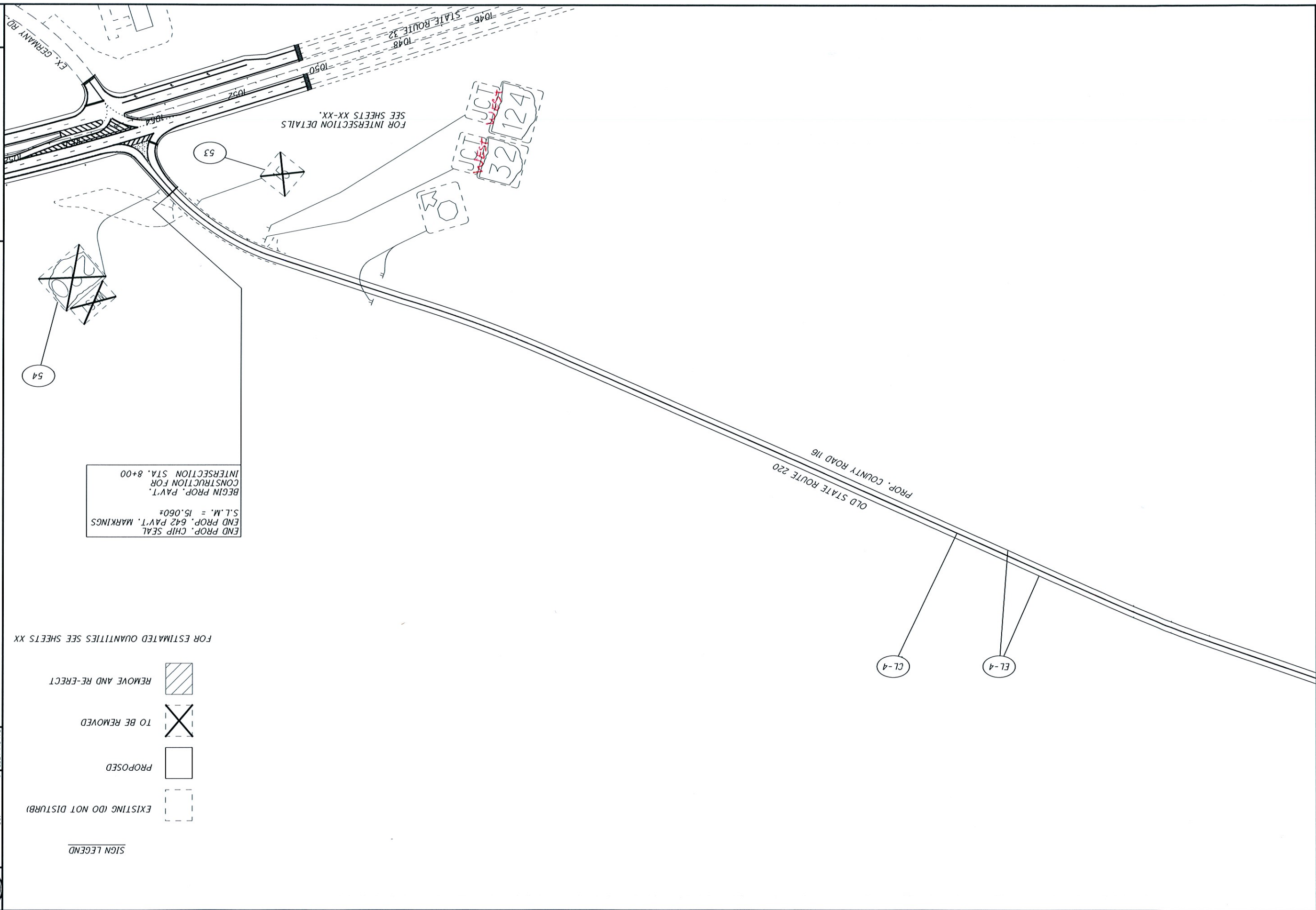
EAST 32 124  
EAST 32 124

WEST 32 124  
WEST 32 124

WEST 32 124  
WEST 32 124  
WEST 32 124





WEST 220





END PROP. CHIP SEAL  
 END PROP. 642 PAVT. MARKINGS  
 S.L.M. = 15.060'  
 BEGIN PROP. PAVT.  
 CONSTRUCTION FOR  
 INTERSECTION STA. 8+00

FOR ESTIMATED QUANTITIES SEE SHEETS XX

- SIGN LEGEND**
- EXISTING (DO NOT DISTURB) 
  - PROPOSED 
  - TO BE REMOVED 
  - REMOVE AND RE-RECT 

CALCULATED  
 CER  
 CHECKED

50  
 HORIZONTAL  
 SCALE IN FEET



**TRAFFIC CONTROL**  
**OLD STATE ROUTE 220**

PIK-220-14.01

