

GENERAL

THE CONTRACTOR SHALL FURNISH AND INSTALL TRAFFIC SIGNAL DEVICES IN COMPLIANCE WITH THESE PLANS AND SPECIFICATIONS, THE 1997 ODOT CONSTRUCTION AND MATERIAL SPECIFICATIONS, ALL SUPPLEMENTAL SPECIFICATIONS, OHIO MANUAL OF UNIFORM TRAFFIC CONTROL DEVICES FOR STREETS AND HIGHWAYS, AND THE "TC" STANDARD CONSTRUCTION DRAWINGS ISSUED BY THE ODOT OFFICE OF TRAFFIC. THESE SPECIFICATIONS SET FORTH THE MINIMUM DESIGN AND MINIMUM OPERATING REQUIREMENTS FOR TRAFFIC SIGNAL EQUIPMENT.

TRAFFIC SIGNAL CONTROL EQUIPMENT SHALL MEET OR EXCEED THE STANDARDS SPECIFIED IN THE FOLLOWING DOCUMENTS.

(A) SPECIFICATIONS LISTED IN THIS PLAN

(B) NEMA STANDARDS PUBLICATION NO. TS2-1992 AND/OR NO. TS1 1989 (OR CURRENT NEMA ISSUE): SECTIONS 1, 2, 5, 6, 8, 11, 13 AND 14

(C) 1997 ODOT CONSTRUCTION AND MATERIAL SPECIFICATIONS 625, 632, 633, AND 733

IN CASE OF A CONFLICTING SPECIFICATION STATEMENT, THE SPECIFICATION DOCUMENT HIERARCHY SHALL BE IN THE ORDER LISTED FROM (A), HIGHEST, TO (C), LOWEST.

EACH BIDDER, WITH HIS BID SHALL SUBMIT TWO (2) SETS OF CATALOG CUTS, DRAWINGS AND BROCHURES OR OTHER DESCRIPTIVE DATA FOR THE ITEMS HE INTENDS TO FURNISH. EACH BIDDER SHALL ALSO PROVIDE A DETAILED LIST OF ALL VARIANCE FROM ODOT SPECIFICATIONS AND FROM THE SPECIFICATIONS CONTAINED HEREIN FOR EACH ITEM THAT DOES NOT COMPLY 100% WITH THE STATED SPECIFICATIONS. ANY BIDDER THAT DOES NOT COMPLY WITH THIS REQUIREMENT MAY BE RULED INELIGIBLE AND MAY NOT BE AWARDED THE CONTRACT. UNLESS OTHERWISE STATED BY THE BIDDER, THE PROPOSAL WILL BE CONSIDERED AS BEING IN STRICT COMPLIANCE WITH THE SPECIFICATIONS.

632 VEHICULAR SIGNAL HEAD, BY TYPE, AS PER PLAN

VEHICULAR SIGNAL HEADS SHALL BE ALUMINUM WITH GLASS LENSES. BALANCE ADJUSTERS, SHOWN ON TC-85.20 OF THE STANDARD CONSTRUCTION DRAWINGS SHALL NOT BE USED.

ALL WIRE ENTRANCES AND TWO WAY MOUNTING BRACKETS SHALL UTILIZE TRI-STUD TYPE HARDWARE TO MOUNT THE SIGNAL HEAD TO THE WIRE ENTRANCE OR TWO WAY MOUNTING BRACKET.

THIS ITEM SHALL CONFORM TO ITEM 632 EXCEPT THE ENTRANCE FITTING SHALL BE OF THE TRI-STUD DESIGN WITH SERRATED RINGS IN ORDER TO ACHIEVE POSITIVE LOCKING.

ALL SIGNAL HEADS SHALL UTILIZE TUNNEL VISORS WITH AN OPENING AT THE BOTTOM.

632 STRAIN POLE, TYPE TC-81.10, AS PER PLAN

IN ADDITION TO THE OTHER REQUIREMENTS OF THIS SECTION POLE HEIGHTS WILL BE AS NOTED IN THE POLE ORIENTATION DATA CHARTS.

631 SIGN FLASHER ASSEMBLY, AS PER PLAN

ALL ITEMS LISTED BELOW SHALL CONFORM TO THE 1997 ODOT CONSTRUCTION AND MATERIAL SPECIFICATIONS.

SIGN FLASHER ASSEMBLIES SHALL CONSIST OF A PAIR OF 8" FLASHING BEACONS, A SOURCE OF ILLUMINATION (100 WATT MERCURY VAPOR LUMINAIRE WITH INTRIGAL BALLAST), INCANDESCENT LAMPS, FLASHER CONTROLLER, DISCONNECT SWITCH WITH ENCLOSURE, PHOTOELECTRIC CONTROL, GROUND ROD, SERVICE CABLE, SIGN SUPPORT ASSEMBLY (POLE MOUNTED), PLANT ENTRANCE SIGN (30"x30"), TRANSFORMER BASE (TYPE AT-A), LIGHT POLE FOUNDATION (24" X 6' DEEP), LIGHT POLE (STYLE V), WIRING, CONNECTORS, JUNCTION BOXES, CONDUIT, CONDUIT CLAMPS, AND MISCELLANEOUS HARDWARE.

THE SIGN FLASHER ASSEMBLY LOCATED AT STATION 25+80 SHALL INCLUDE 3C #8 DIRECT BURIED CABLE WITH MARKING TAPE. THIS SIGN FLASHER ASSEMBLY MAY USE THE FLASHER CONTROLLER LOCATED ON POLE A AT STATION 18+13

THE SIGN FLASHER ASSEMBLY LOCATED AT STATION 3+00 SHALL INCLUDE SERVICE CABLE FROM POWER SOURCE.

MAINTENANCE OF TRAFFIC NOTES

ITEM 614 MAINTAINING TRAFFIC

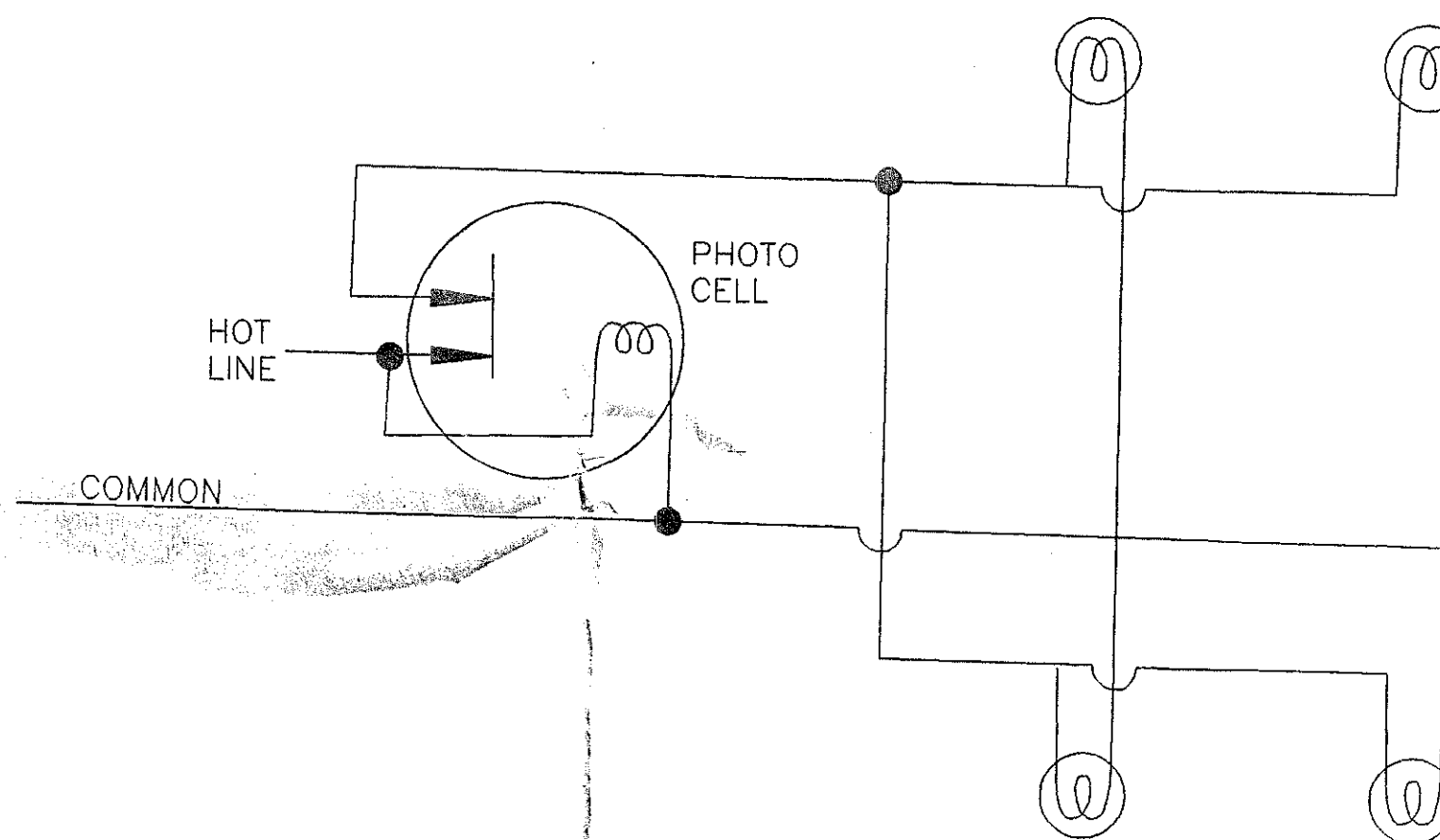
ALL TRAFFIC CONTROL DEVICES SHALL BE FURNISHED, ERECTED, MAINTAINED, AND REMOVED BY THE CONTRACTOR IN ACCORDANCE WITH THE OHIO MANUAL OF TRAFFIC CONTROL DEVICES FOR CONSTRUCTION AND MAINTENANCE OPERATIONS, (CURRENT ADDITION), COPIES OF WHICH ARE AVAILABLE FROM THE OHIO DEPARTMENT OF TRANSPORTATION, OFFICE OF TRAFFIC, 1980 WEST BROAD STREET, COLUMBUS, OHIO 43223.

WHEN THE CONTRACTOR IS NOT WORKING ALL LANES SHALL BE FULLY OPEN TO TRAFFIC. DURING CONSTRUCTION OPERATIONS TWO-WAY, TWO LANE TRAFFIC MAY BE IMPLEMENTED IN ACCORDANCE WITH PAGE C-18 OF THE OHIO MANUAL.

THE INTERSECTION MAY BE CLOSED A MAXIMUM OF 10 MINUTES FOR THE SPAN TO BE ERECTED. DURING THIS TIME TRAFFIC MUST BE CONTROLLED BY AN OFF DUTY UNIFORMED POLICE OFFICER(S), PAID FOR BY THE CONTRACTOR.

ALL COSTS RESULTING FROM THE ABOVE REQUIREMENTS SHALL BE CONSIDERED TO BE INCLUDED IN THE LUMP SUM BID PRICE FOR ITEM 614 MAINTAINING TRAFFIC.

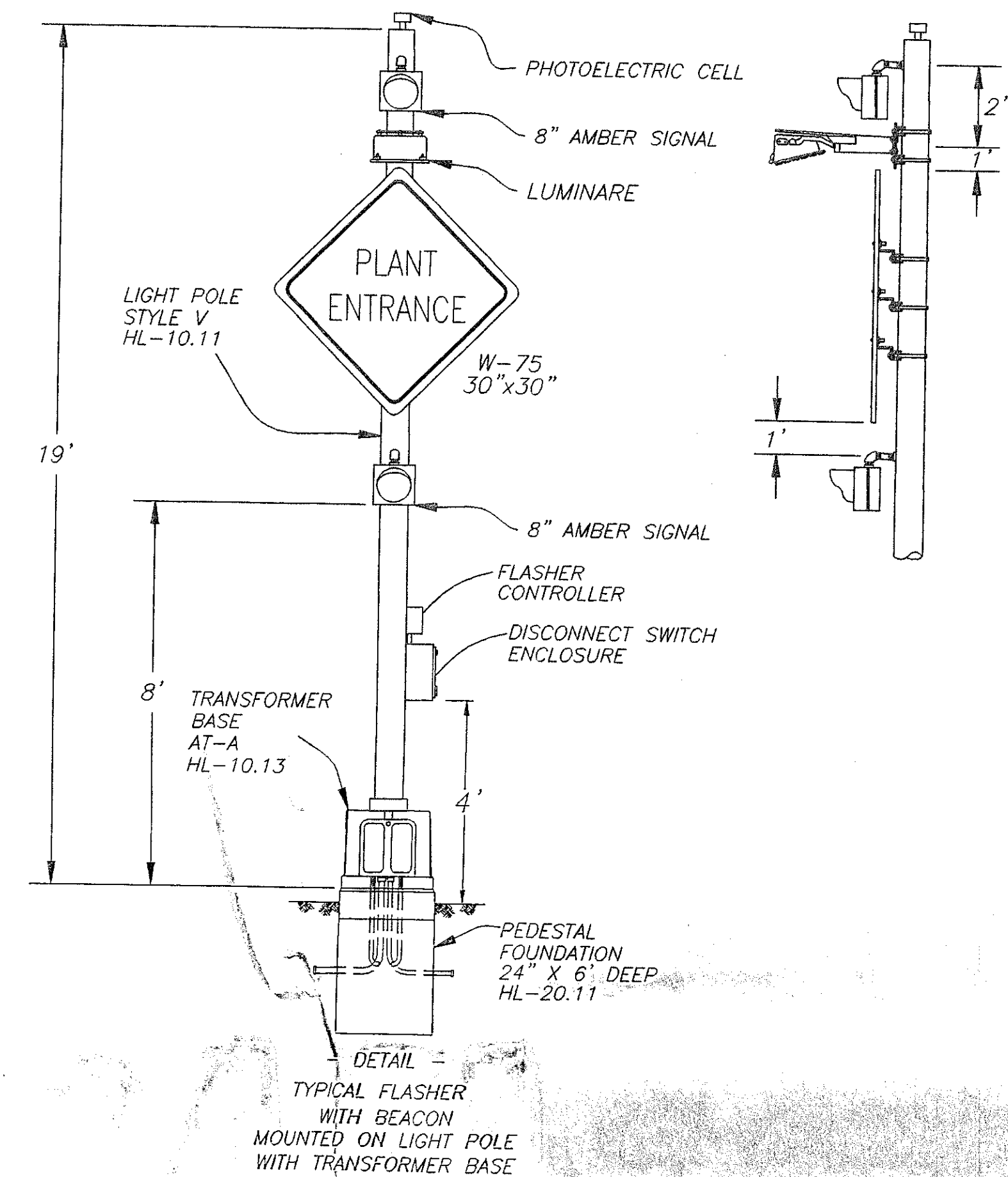
PHOTO CELL HOOK-UP



QUANTITIES

QUAN	UNIT	ITEM	DESCRIPTION
1	LUMP	614	MAINTAINING TRAFFIC
1	LUMP	623	CONSTRUCTION LAYOUT STAKES
4	EA	625	GROUND ROD
2	EA	631	SIGN FLASHER ASSEMBLY, AS PER PLAN
4	EA	632	VEHICULAR SIGNAL HEAD, 1 SECTION, 12" LENS, 1-WAY, AS PER PLAN
4	EA	632	VEHICULAR SIGNAL HEAD, 1 SECTION, 12" LENS, 2-WAY, AS PER PLAN
8	EA	632	COVERING OF VEHICULAR SIGNAL HEAD
313	LF	632	MESSENGER WIRE, 7 STRAND, 3/8" DIAMETER WITH ACCESSORIES
328	LF	632	SIGNAL CABLE, 5 CONDUCTOR, NO. 14 AWG
4	EA	632	STRAIN POLE FOUNDATION
70	LF	632	POWER CABLE, 2 CONDUCTOR, NO. 8 AWG
136	LF	632	SERVICE CABLE, 2 CONDUCTOR, NO. 8 AWG
4	EA	632	STRAIN POLE, TYPE TC-81.10, DESIGN 5, AS PER PLAN
2	EA	633	SIGN FLASHER ASSEMBLY, AS PER PLAN

SIGN FLASHER ASSEMBLY



CALCULATED
CHECKED

NOTES
MEAD PAPER PLANT

MEAD PAPER PLANT

2
4