



STATE OF OHIO
DEPARTMENT OF TRANSPORTATION
INTER-OFFICE COMMUNICATION

County of _____ Dist. 09

S. H. _____ Sec. _____

Date June 5, 1975

To Robert D. McMillen, Engr. of Traffic Attention: _____

From John A. Morrison, District Operations Engr. By: William R. Wright, DTE

Subject Rural Flasher

SR 41 junctions with SR 28 in Ross County as a "T" intersection. This is a new highway, less than two years old.

All standard intersection signs and pavement marking are in place. A dual installation was made of the Stop Ahead and Stop signs on the south (SR41) approach and the other junction and destination signs relocated for better target value. A large double night arrow was erected on the north side of SR 28 in line with the SR 41 approach.

SR 41 does not appear to stop at SR 28 due to the grade, general topography or appearance of the roadway.

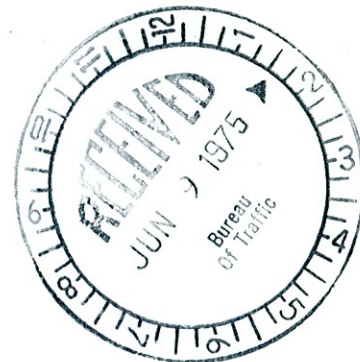
Traffic on SR 28, especially eastbound traffic, cannot distinguish the exact location of SR 41, despite the route markers and other signs.

It is recommended that an overhead flasher be erected at this intersection, amber to SR 28, and red to SR 41.

Enclosed are:

- (a) Engineering order - This has been approved by the Traffic Field Engineer and the District Operations Engineer.
- (b) A condition diagram.
- (c) Radar Speed Check for south approach of SR 41.
- (d) Photographs of the intersection.
- (e) Signal shop order for central office signal section to install the flasher.

Please expedite.



WRW
WRW/als
Encls.

cc: Garwood
Morrison
file
letter file

SPEED CHECK

RADAR TYPE SPEED METER

Location Ros. SR-41 South of SR-28 5.1 MI. 15.07
 Date 5-8-75 Day Thursday County ROSS
 Observer Ron Henry
 Type Pavement Bituminous Dry Wet Condition Good Width 24'
 Weather Clear - Warm Temperature 75°

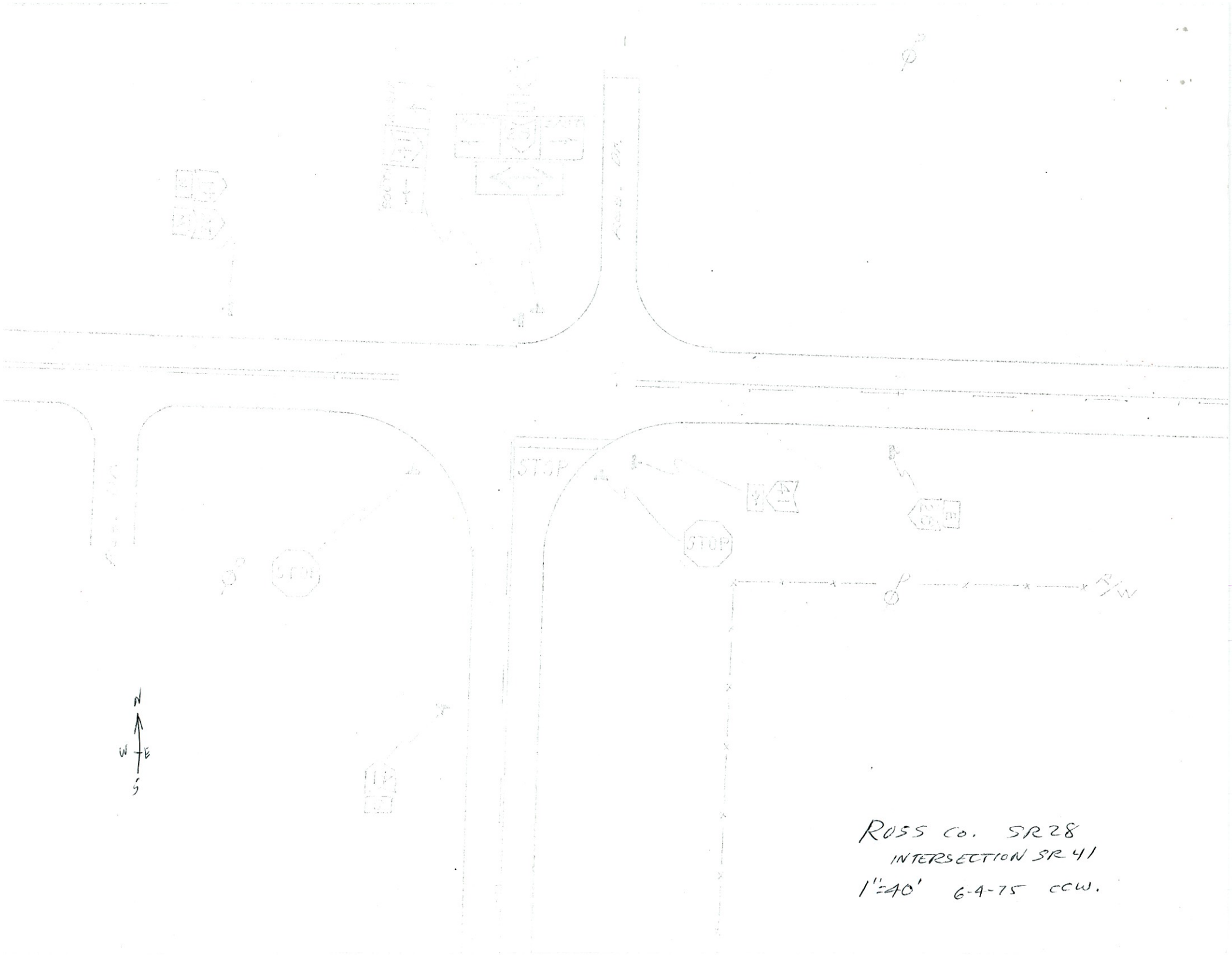
S bound, Time <u>1:15 PM</u> to <u>3:15 PM</u>					M.P.H.	N bound, Time <u>1:15 PM</u> to <u>3:15 PM</u>				
Cum. %	Cum. Total	No.	Vehicles			No.	Cum. Total	Cum. %		
			Passenger Cars	Commercial					Passenger Cars	Commercial
					Over					
					90.0					
					88.0					
					86.0					
					84.0					
					82.0					
					80.0					
					78.0					
					76.0					
					74.0					
					72.0					
					70.0					
					68.0					
					66.0					
					64.0					
					62.0					
					60.0					
					58.0	2	133	100		
					56.0	1	131	98		
					54.0	2	130	97		
100	82	1			52.0	4	128	96		
99	81	4			50.0	7	124	93		
94	77	8			48.0	12	117	88		
84	69	7			46.0	9	95	71		
76	62	9			44.0	14	86	65		
65	53	6			42.0	21	72	54		
57	47	18			40.0	19	51	38		
35	29	12			38.0	13	32	24		
21	17	5			36.0	5	19	14		
15	12	5			34.0	5	14	11		
9	7	2			32.0	6	9	7		
6	5	4			30.0	2	3	2		
					28.0	1	1	.8		
1	1	1			26.0					
					24.0					
					22.0					
					20.0					
					18.0					
					16.0					
					14.0					
					Below					
					Totals					

FILE 38-48

FILE 38-48

TS - 11/49
 Rev. 6/63
 85% = 46 M.P.H.

85% = 46 M.P.H.



ROSS Co. SR 28
 INTERSECTION SR 41
 1"=40' 6-4-75 CCW.