

— ENGINEERING ORDER —

| | | | |
|---------------------------------------------|----------------------------|---------------------------|---------------------------------------------|
| LOCATION: <u>LOGS CO., SR 28, Jct SR 41</u> | CENTRAL OFFICE ENGINEERING | | DIVISION APPROVAL |
| | STUDIES | APPROVAL | DATE |
| | FIELD ENG. | <u>Robert L. Orndorff</u> | <u>6/17/75</u> |
| | STANDARD | | |
| | ELECTRICAL | | |
| LOG POINT OF LOWEST NUMBERED ROUTE: | | | DIVISION TRAFFIC ENG. <u>[Signature]</u> |
| | | | DIVISION OPERATIONS ENG. <u>[Signature]</u> |
| | | | E.O. BY <u>W. R. WRIGHT</u> |

E.O. NO. _____

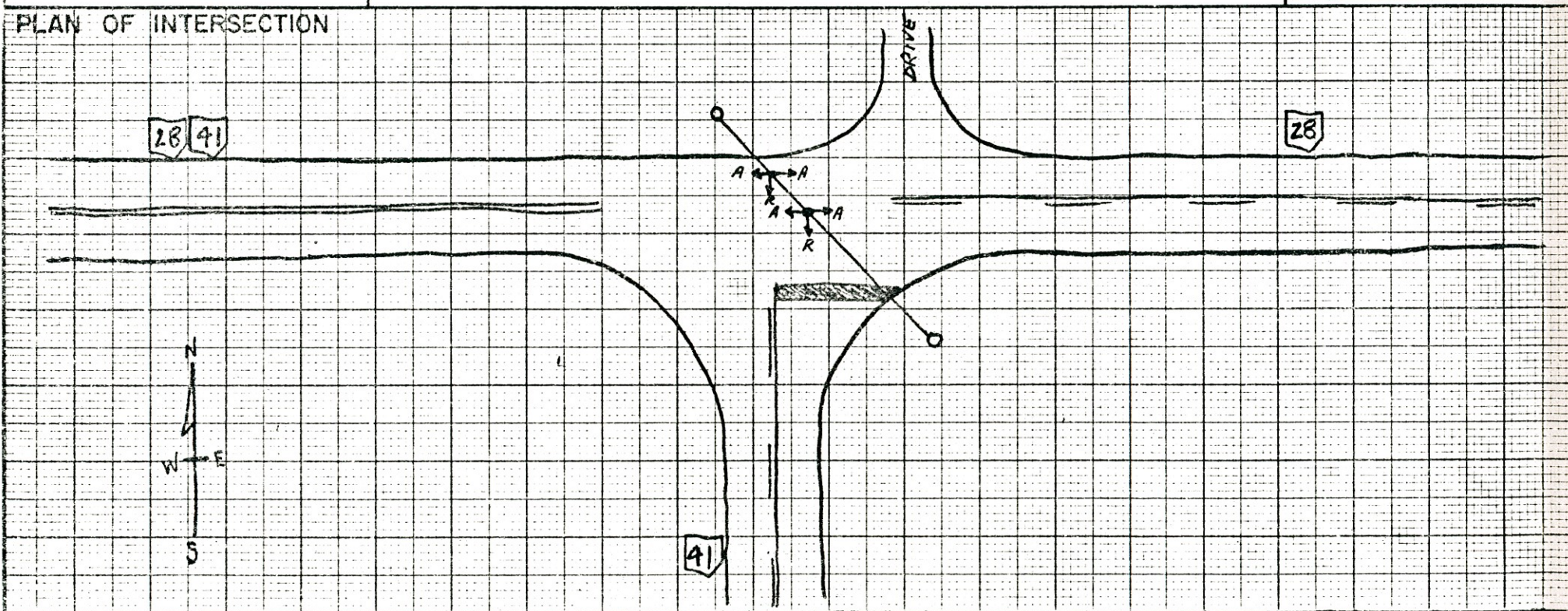
COPIES TO _____

TRAFFIC PROBLEM HIGH SPEED ON SR 28 THRU INTERSECTION. INTERSECTION NOT PROMINENT AT CREST OF VERTICAL CURVE FROM ALL APPROACHES. SR 28 FROM SR 41 DOES NOT LOOK LIKE AN INTERSECTION OR A STOP CONDITION DESPITE ADVANCE SIGNS AND DUAL STOP SIGNS.

APPROVED BY [Signature]

ENGINEER OF TRAFFIC

DATE 6-18-75



| REMARKS | ITEM INSTALLED | DATE | INSPECTED | DATE | EVALUATION | DATE |
|---------------------------------------------------------------------------------------------|----------------|------|-----------|------|------------|------|
| <u>PROPOSED FLASHER AMBER TO SR 28 FB AND RED TO SR 41 FOR INTERSECTION IDENTIFICATION.</u> | | | | | | |
| | | | | | | |
| | | | | | | |

ATTACH E.O. TO DRAWING: